

如何用 SIMATIC TIA portal 設定

GW-7662 組態?

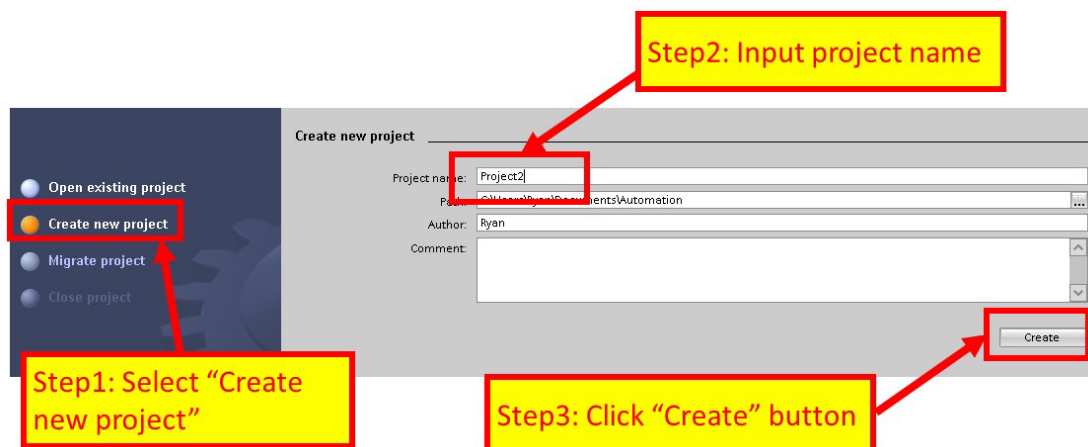
請參考下列步驟來設定專案。

Step 1: 建立專案

- ◆ 雙擊 TIA 圖示來啟動 Step 7 V11

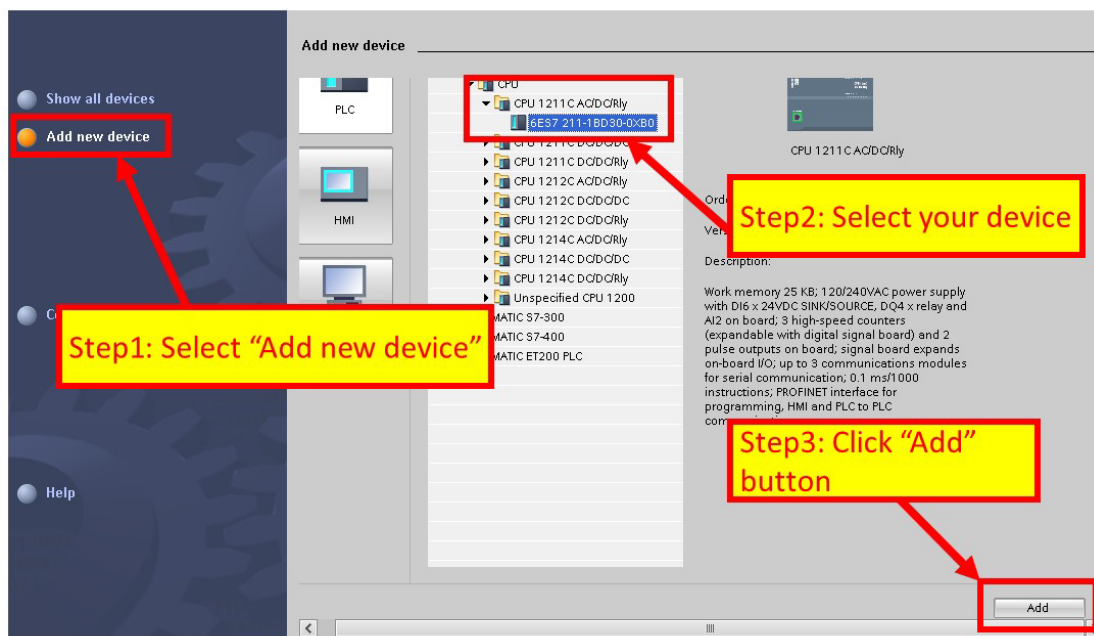
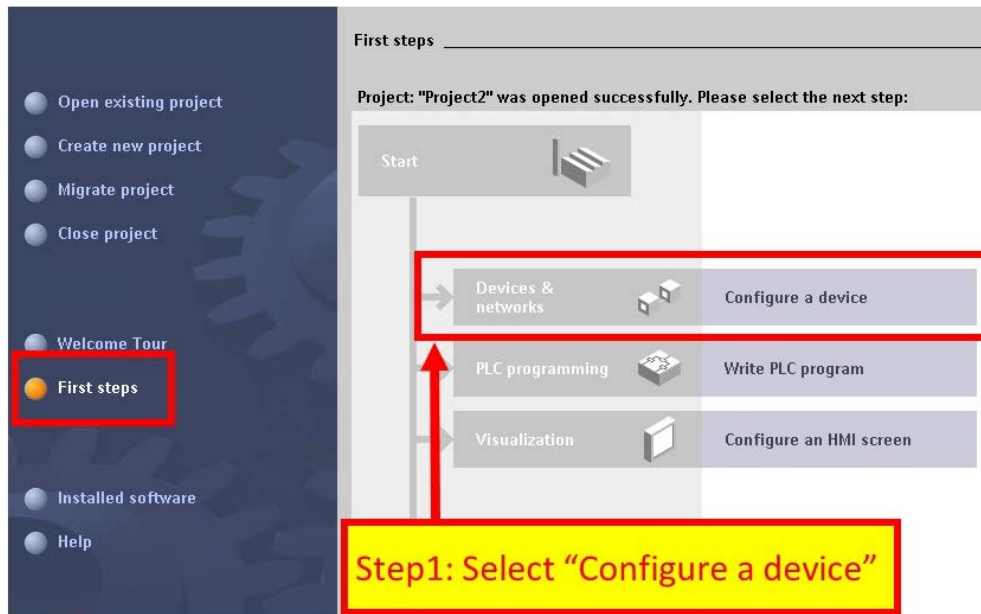


- ◆ 建立專案

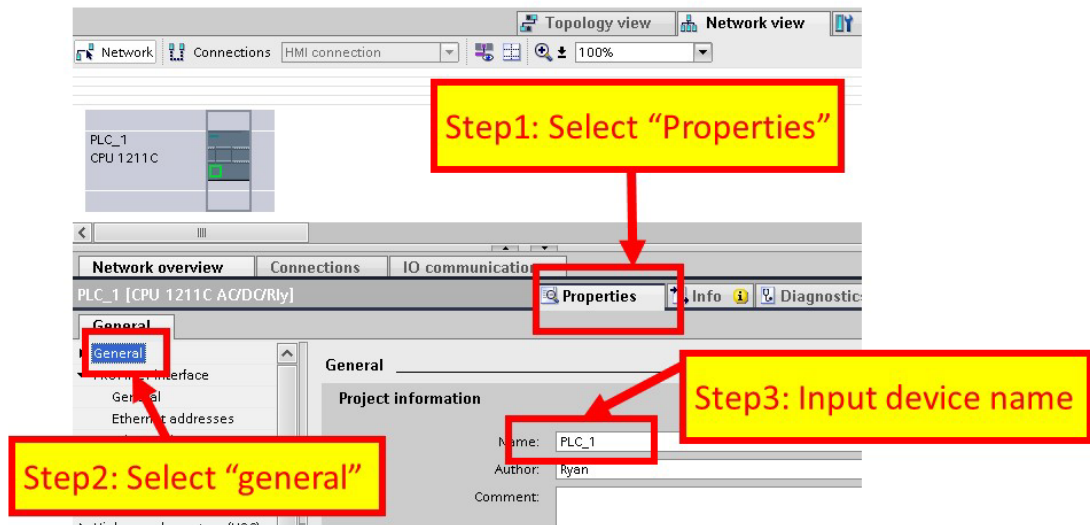


Step 2: 專案配置

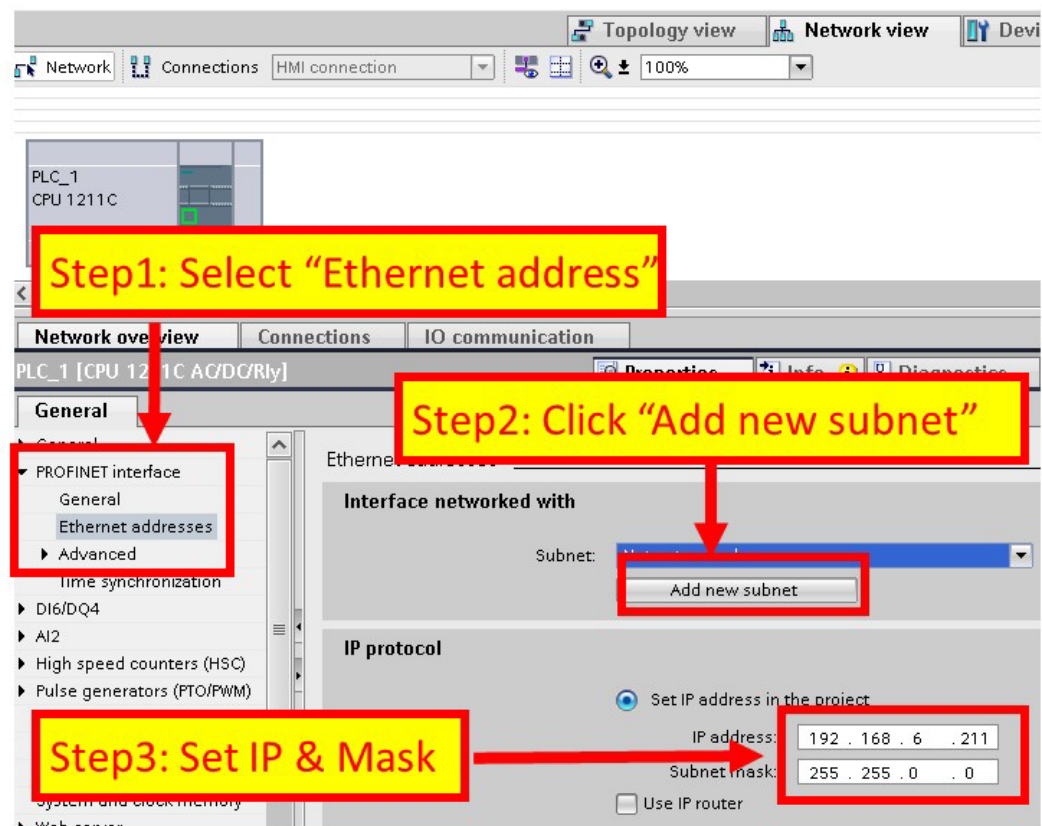
◆ 配置一個 PLC 裝置



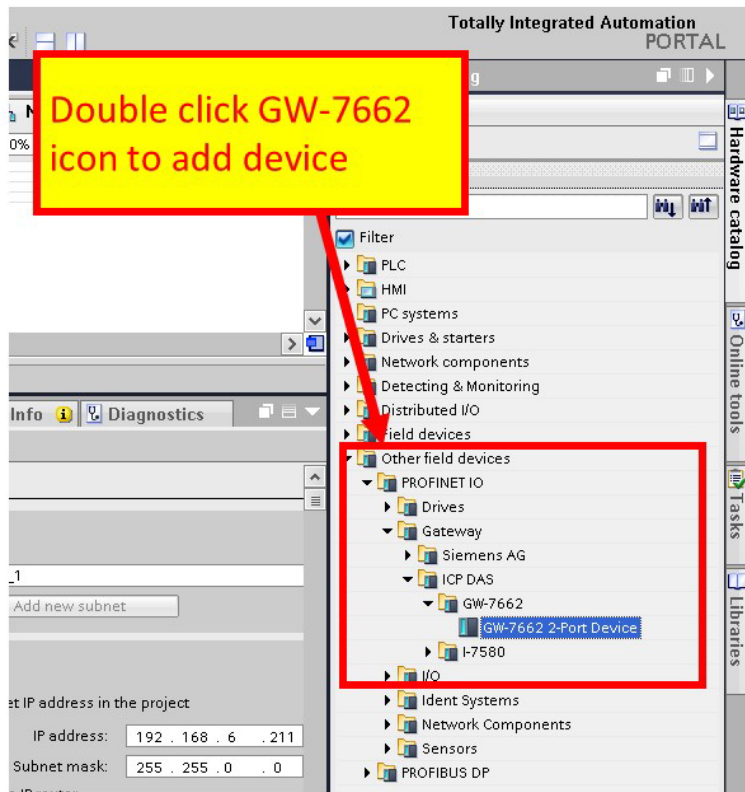
- ◆ 設定 PLC 的裝置名稱爲: PLC_1



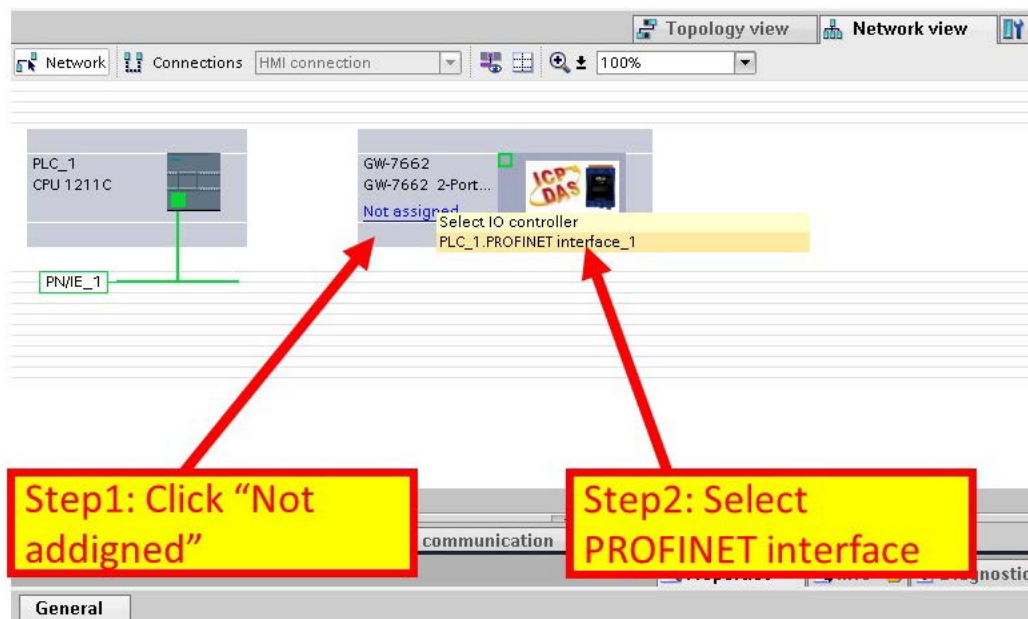
- ◆ 設定 PLC 的 IP 地址與網路遮罩並建立一個新的子網



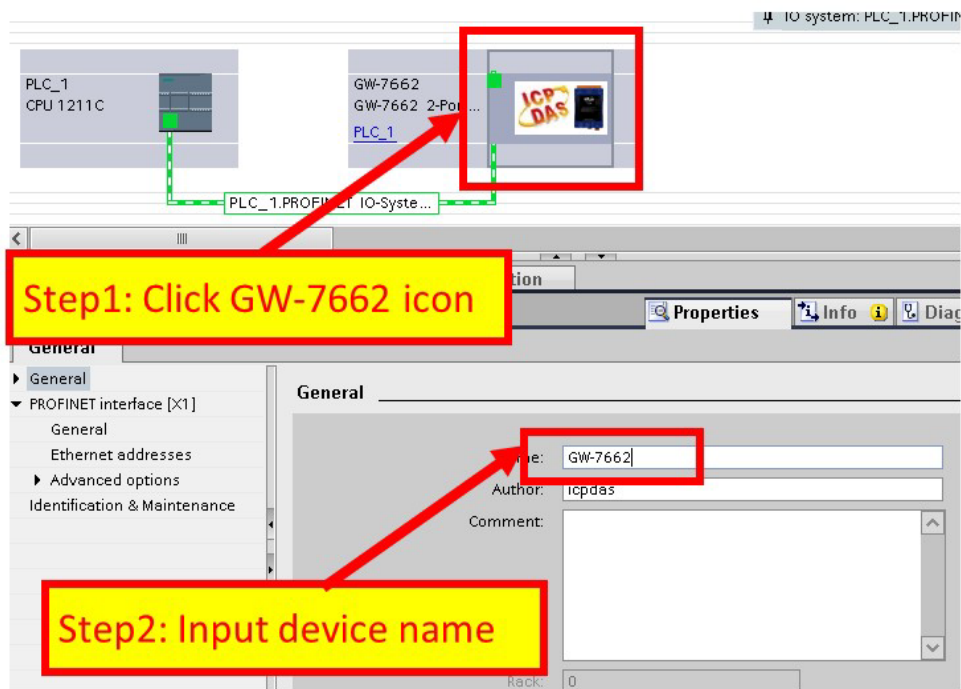
◆ 加入 GW-7662 模組



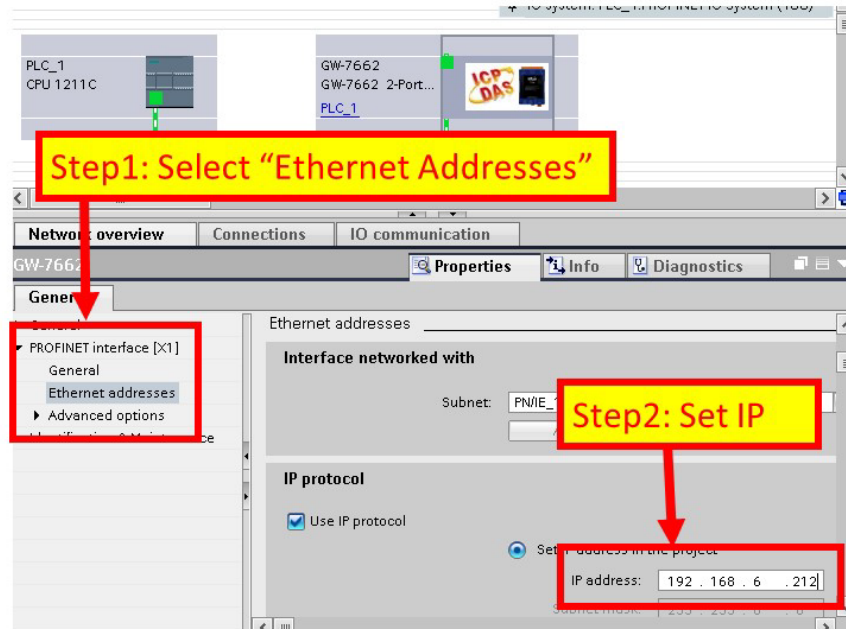
◆ 選擇 PROFINET 介面



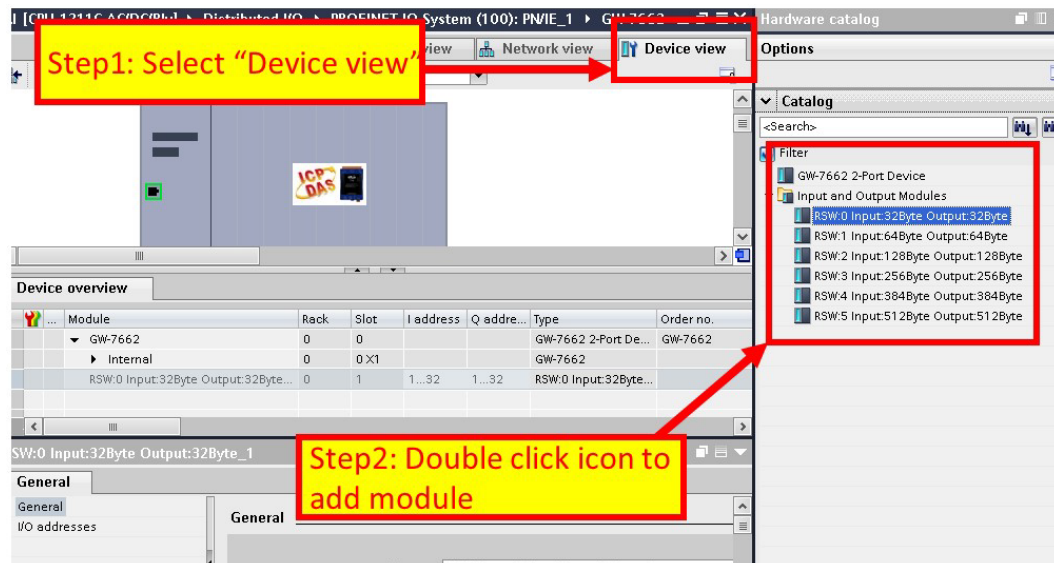
◆ 設定裝置名稱爲“gw-7662”



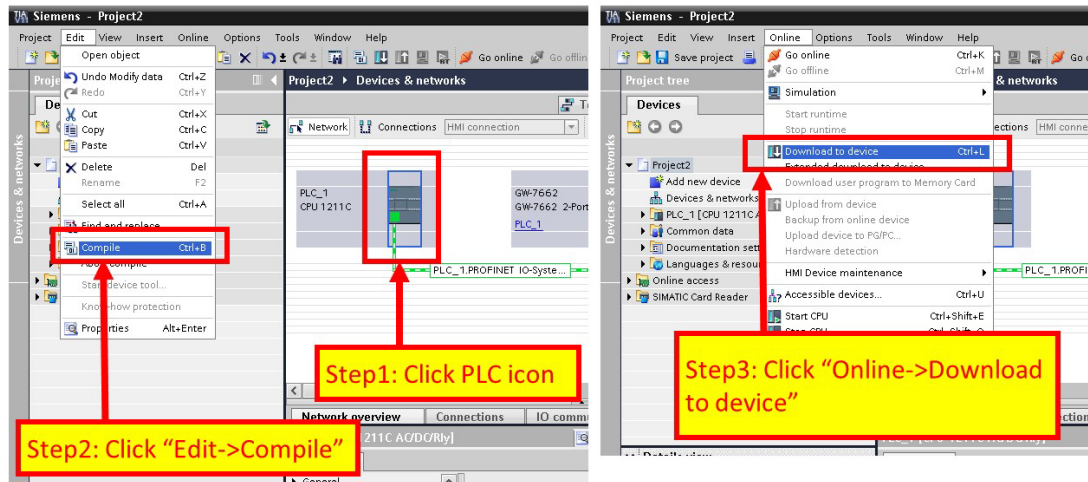
◆ 設定 GW-7662 模組的 IP 地址

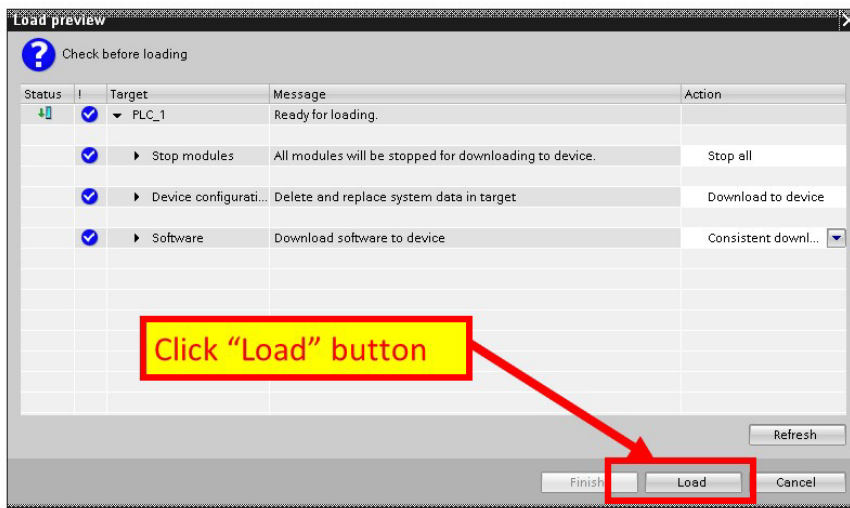
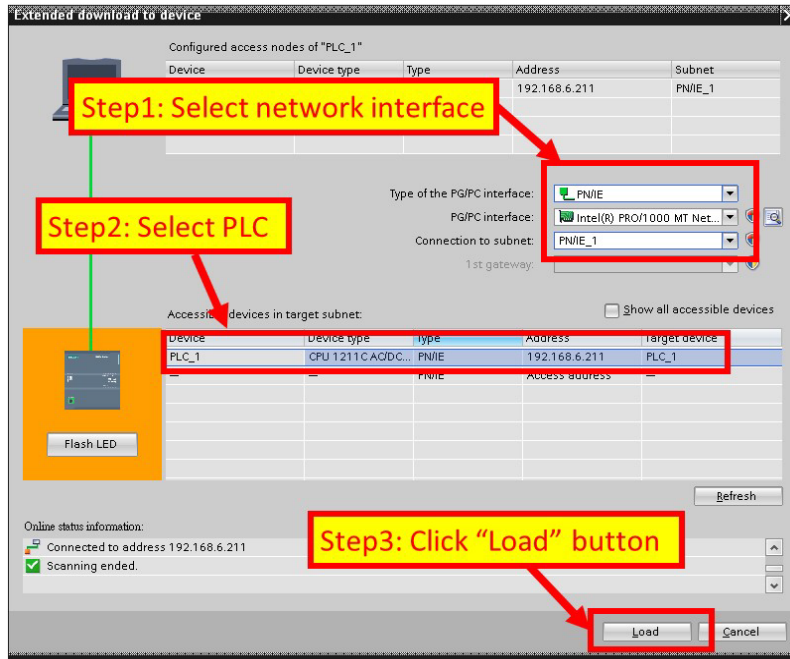


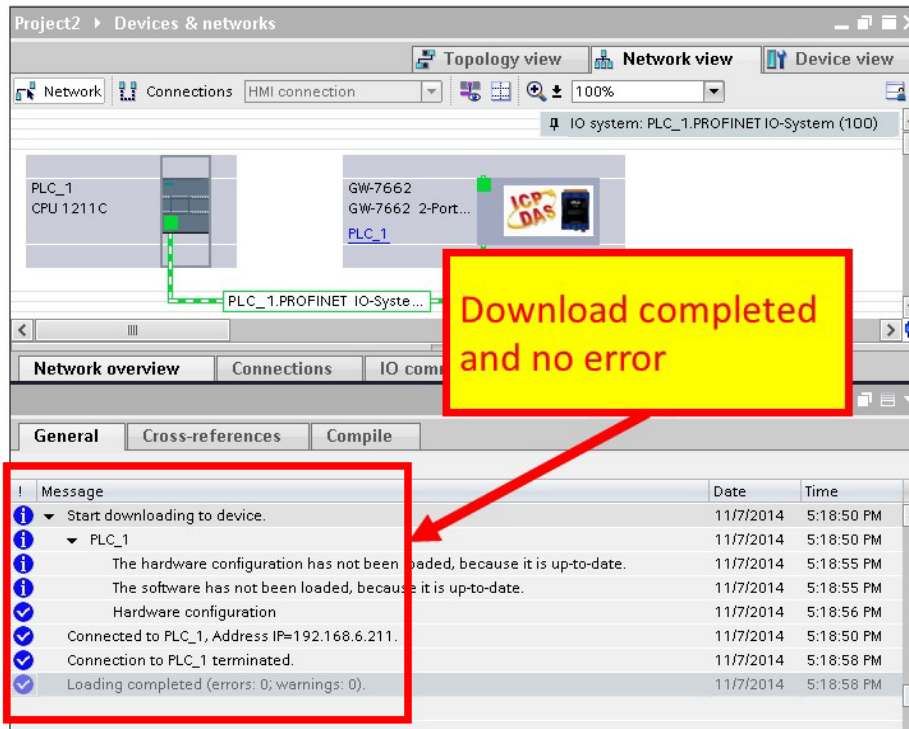
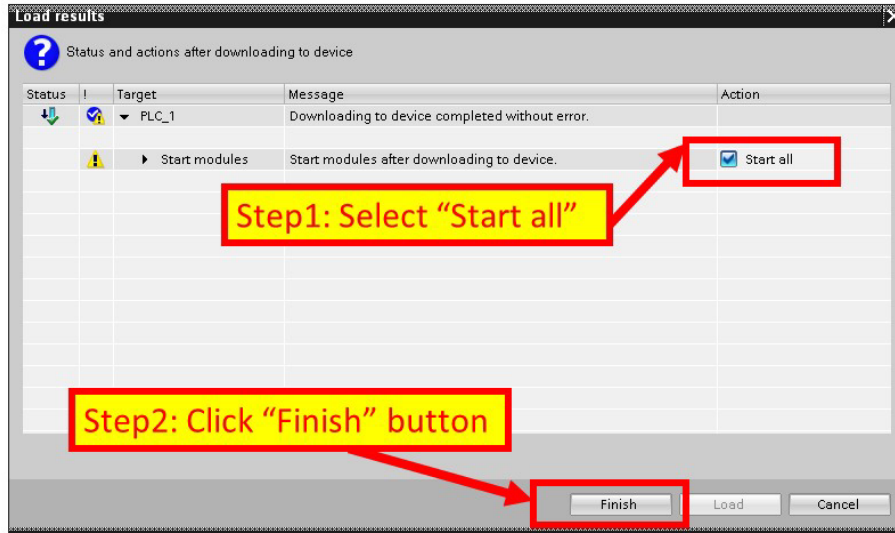
◆ 選擇 GW-7662 模組的模組類型



◆ 專案編譯並下載至裝置







GW-7662 模組的 AP LED 指示燈會恆亮，BOOT LED 與 ERR LED 指示燈會恆滅，這表示 PLC 與 GW-7662 模組間的通訊連線已經建立。

