

How to setup configuration between GW-7663 and SIMATIC TIA portal?

In this example, please follow the step to setup project.

Step 1: Create the project

- ◆ Double Click TIA icon to start Step 7 V11



- ◆ Create the Project

The screenshot displays the 'Create new project' dialog box in TIA Portal V11. On the left, a sidebar contains four options: 'Open existing project', 'Create new project' (highlighted with a red box and an arrow pointing to a yellow callout box), 'Migrate project', and 'Close project'. The main area of the dialog has the following fields: 'Project name:' with 'Project2' entered (highlighted with a red box and an arrow pointing to a yellow callout box), 'Path:' with 'C:\Users\Ryan\Desktop\Automation' (highlighted with a red box), 'Author:' with 'Ryan', and a 'Comment:' text area. At the bottom right, there is a 'Create' button (highlighted with a red box and an arrow pointing to a yellow callout box).

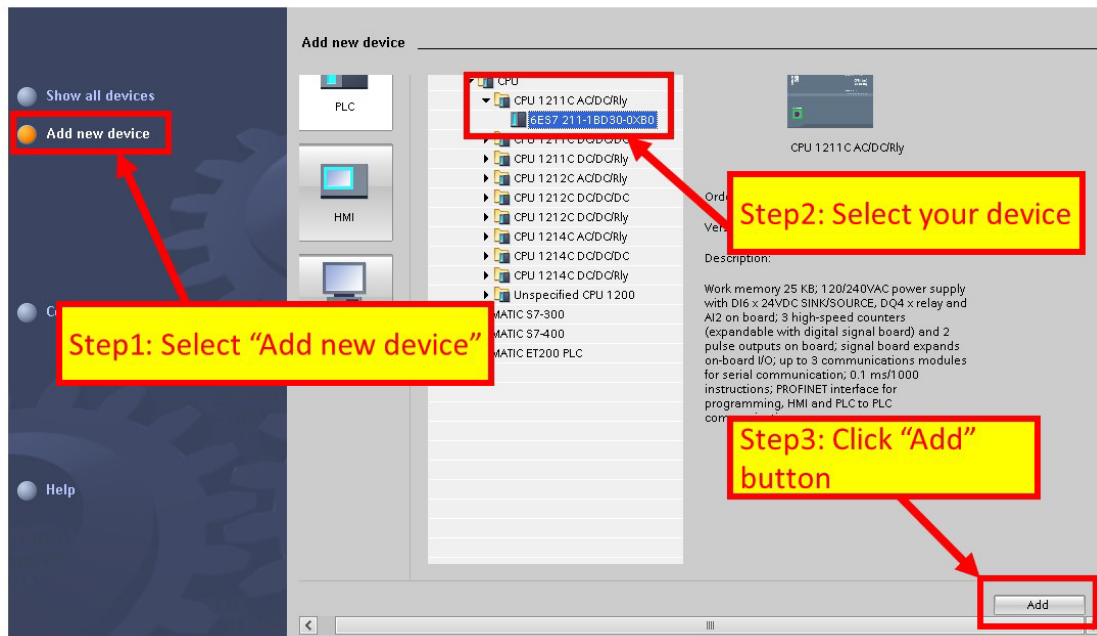
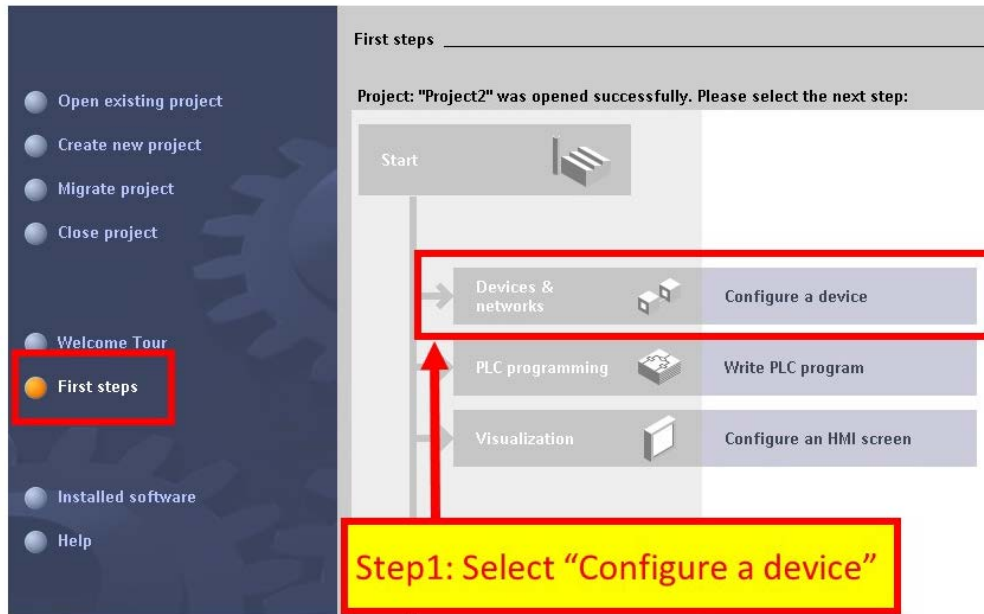
Step1: Select "Create new project"

Step2: Input project name

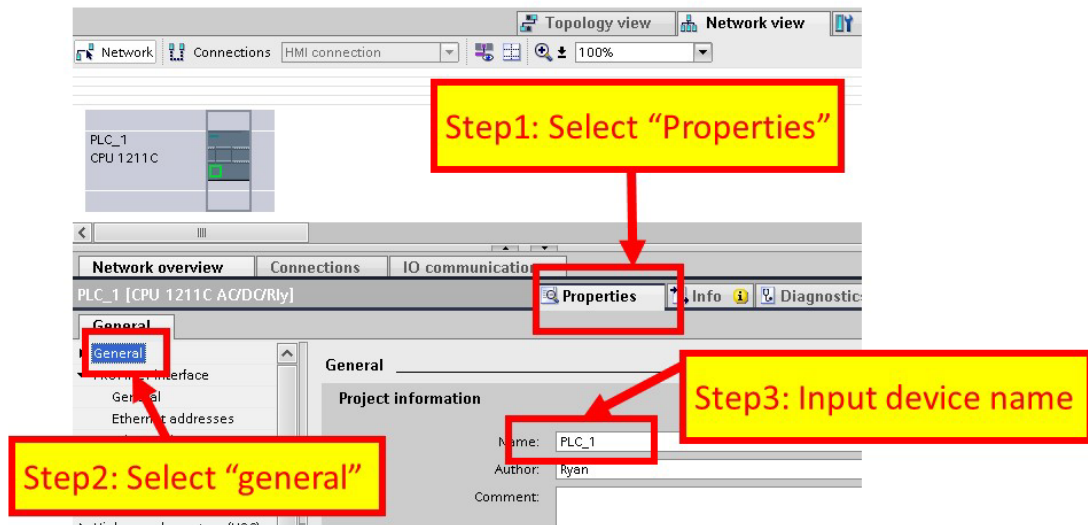
Step3: Click "Create" button

Step 2: Project configuration

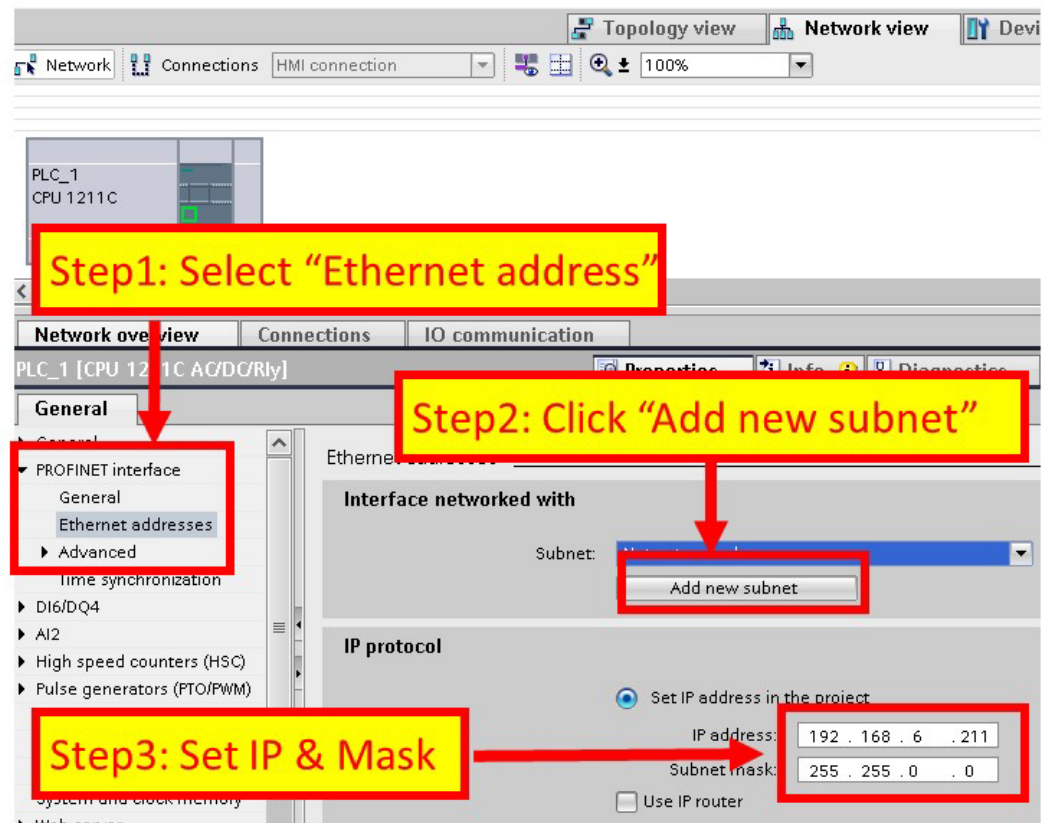
◆ Add a PLC device



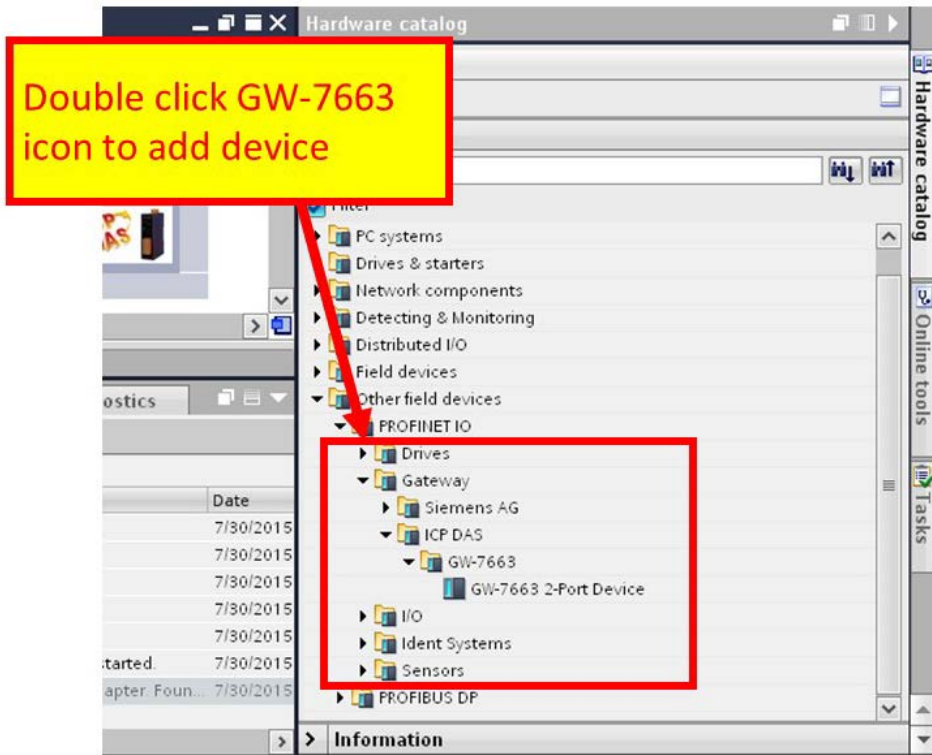
- ◆ Set the device name of PLC to “PLC_1”



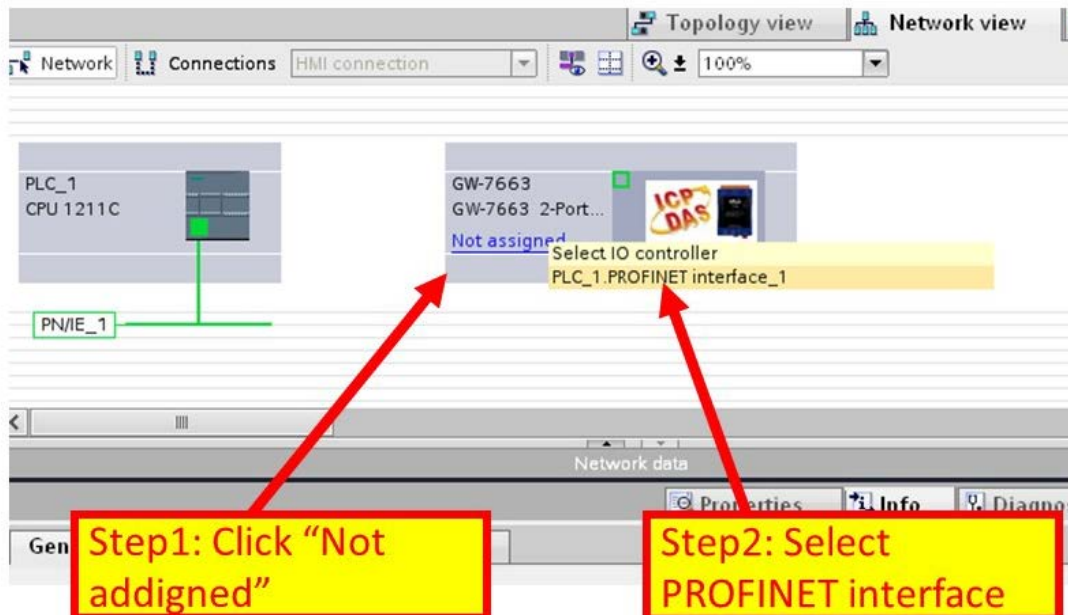
- ◆ Set the IP and mask of PLC and add a new subnet



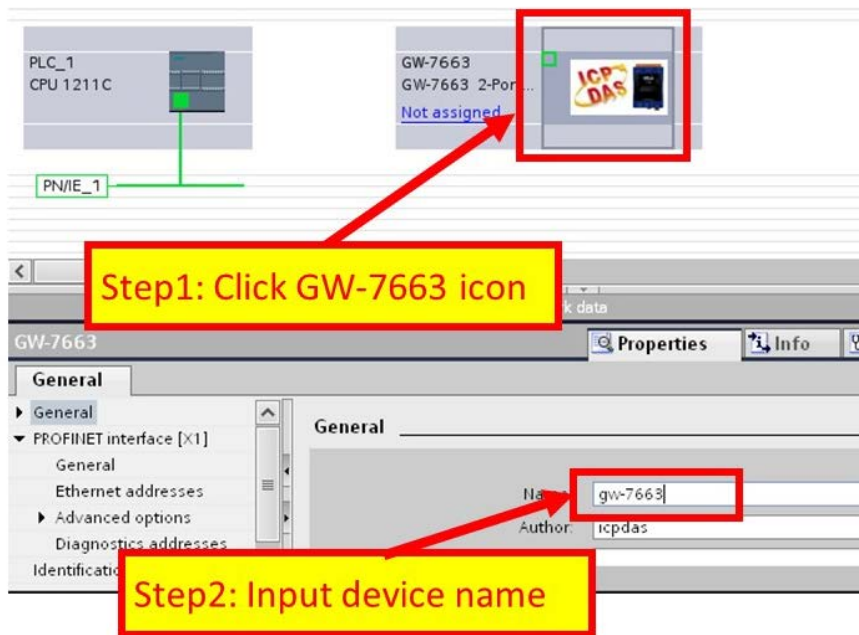
◆ Add GW-7663 module



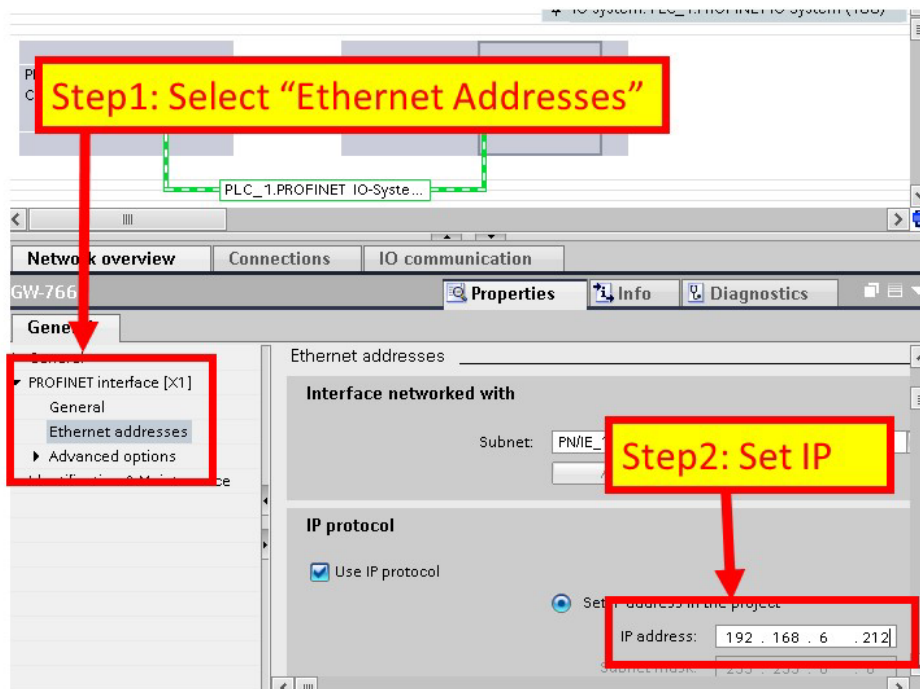
◆ Select PROFINET interface



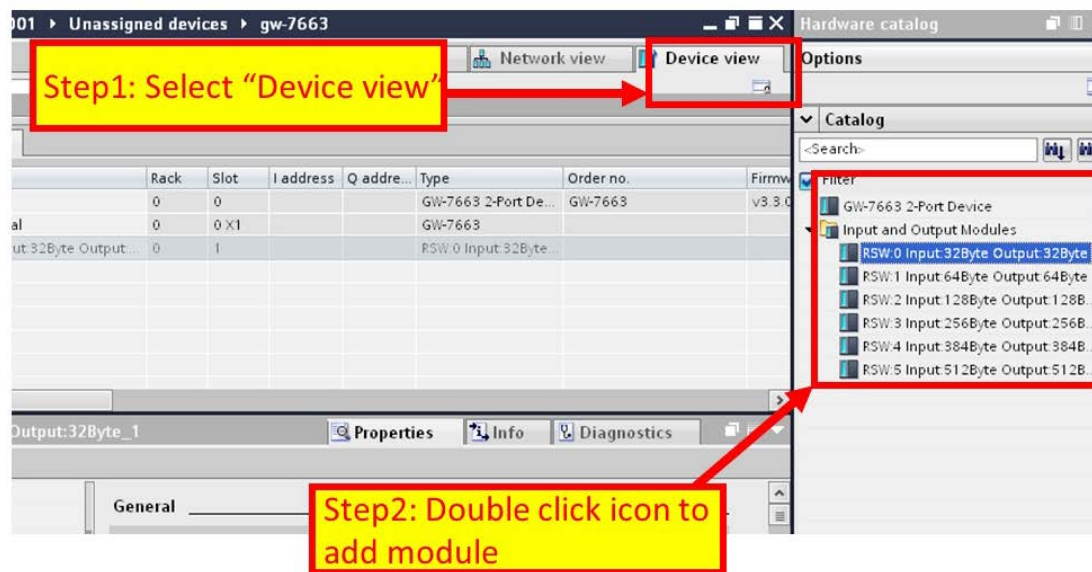
◆ Set device name to “gw-7663”



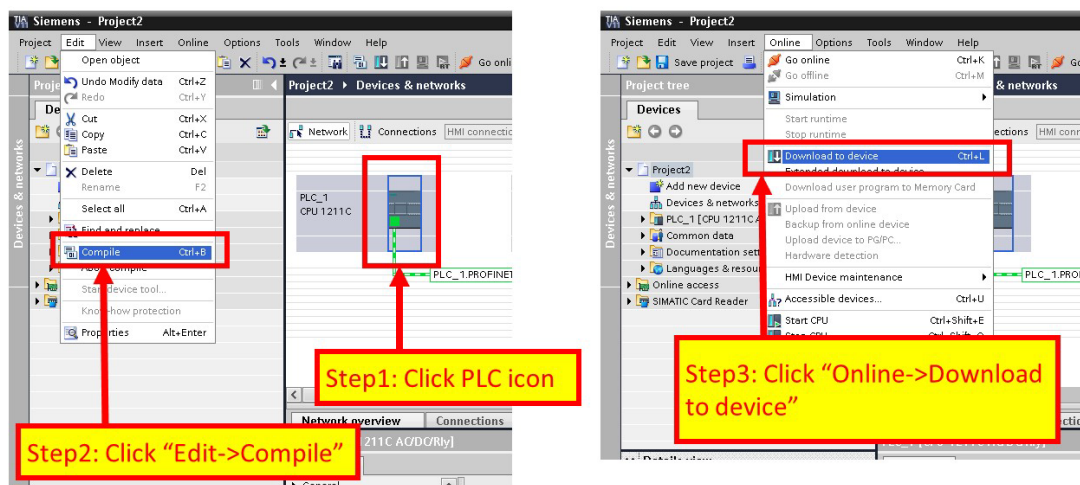
◆ Set the IP of GW-7663 module

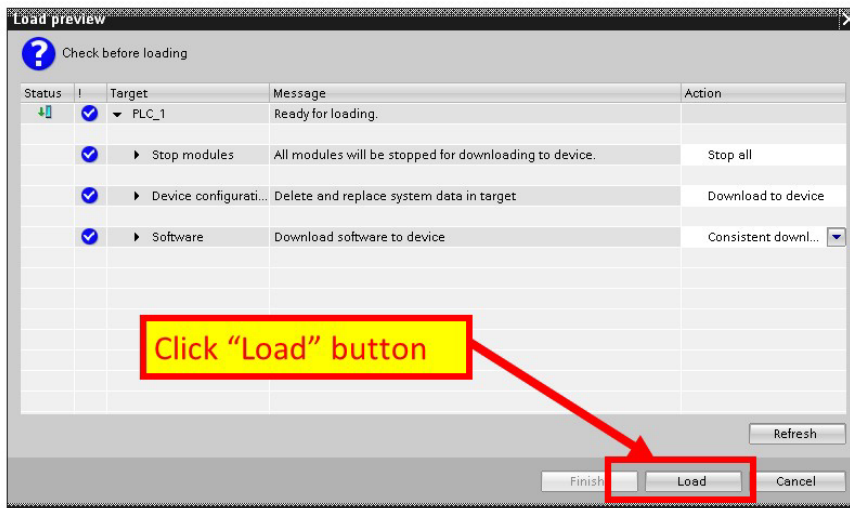
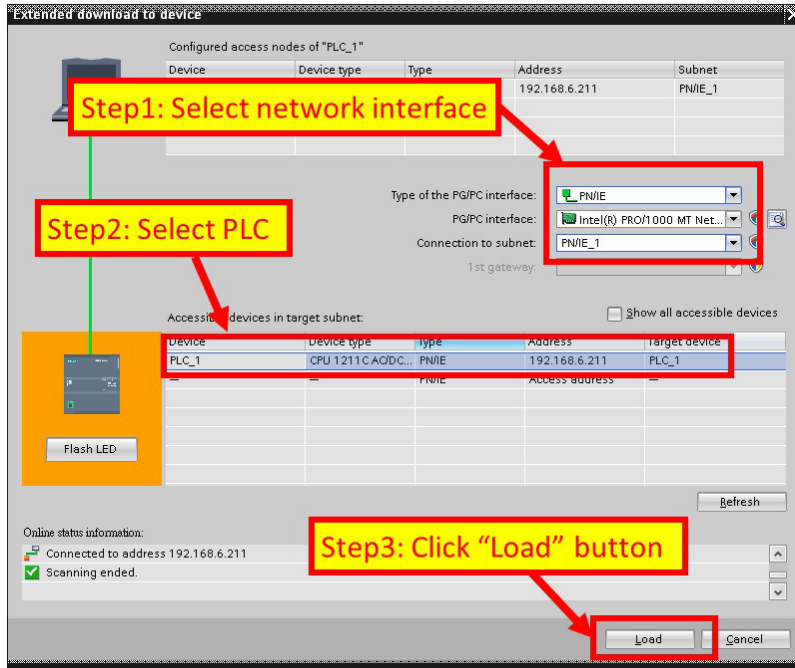


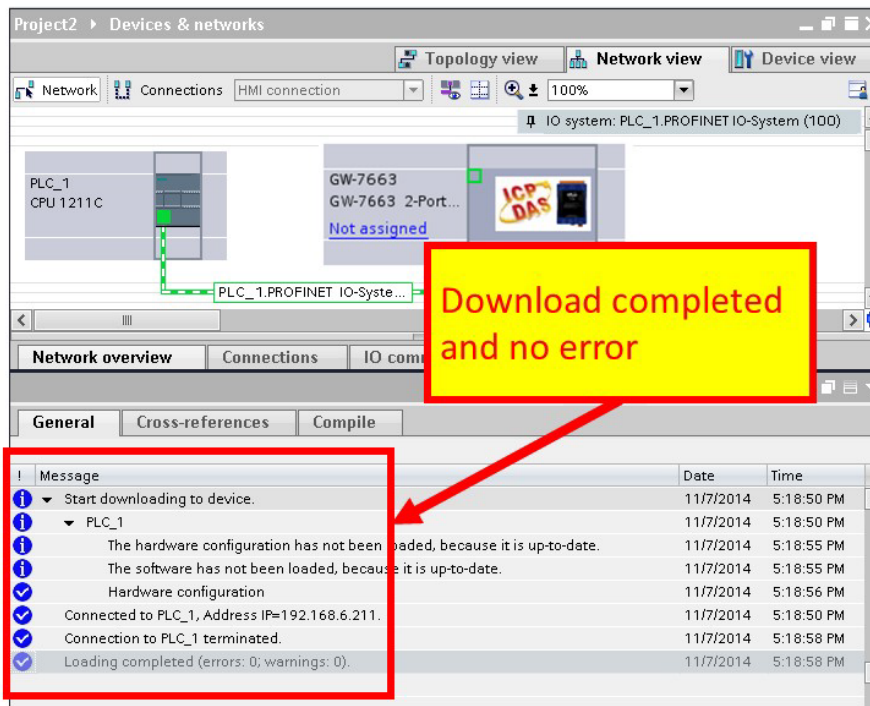
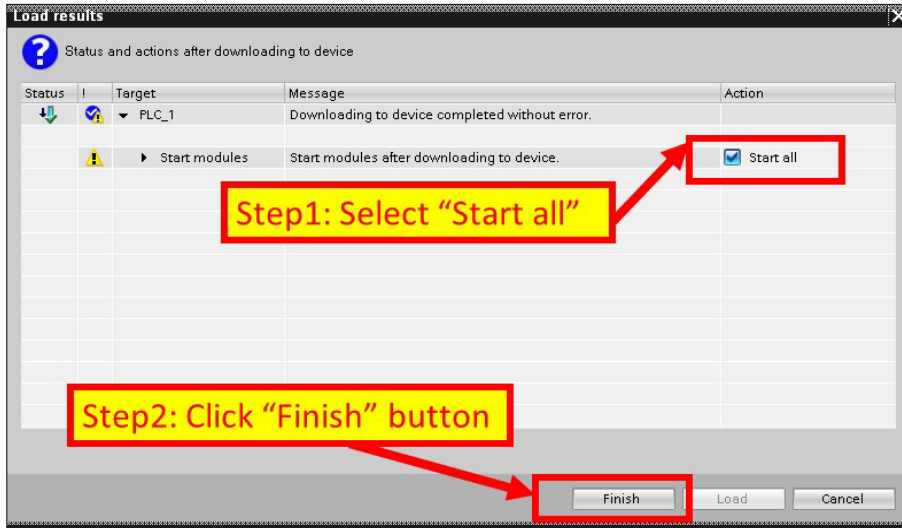
◆ Select module type of GW-7663 module



◆ Compile and download to device







At this time, the AP LED should turn on, BOOT LED and ERR LED should turn off, it means the connection between PLC and GW-7663 module is established.

