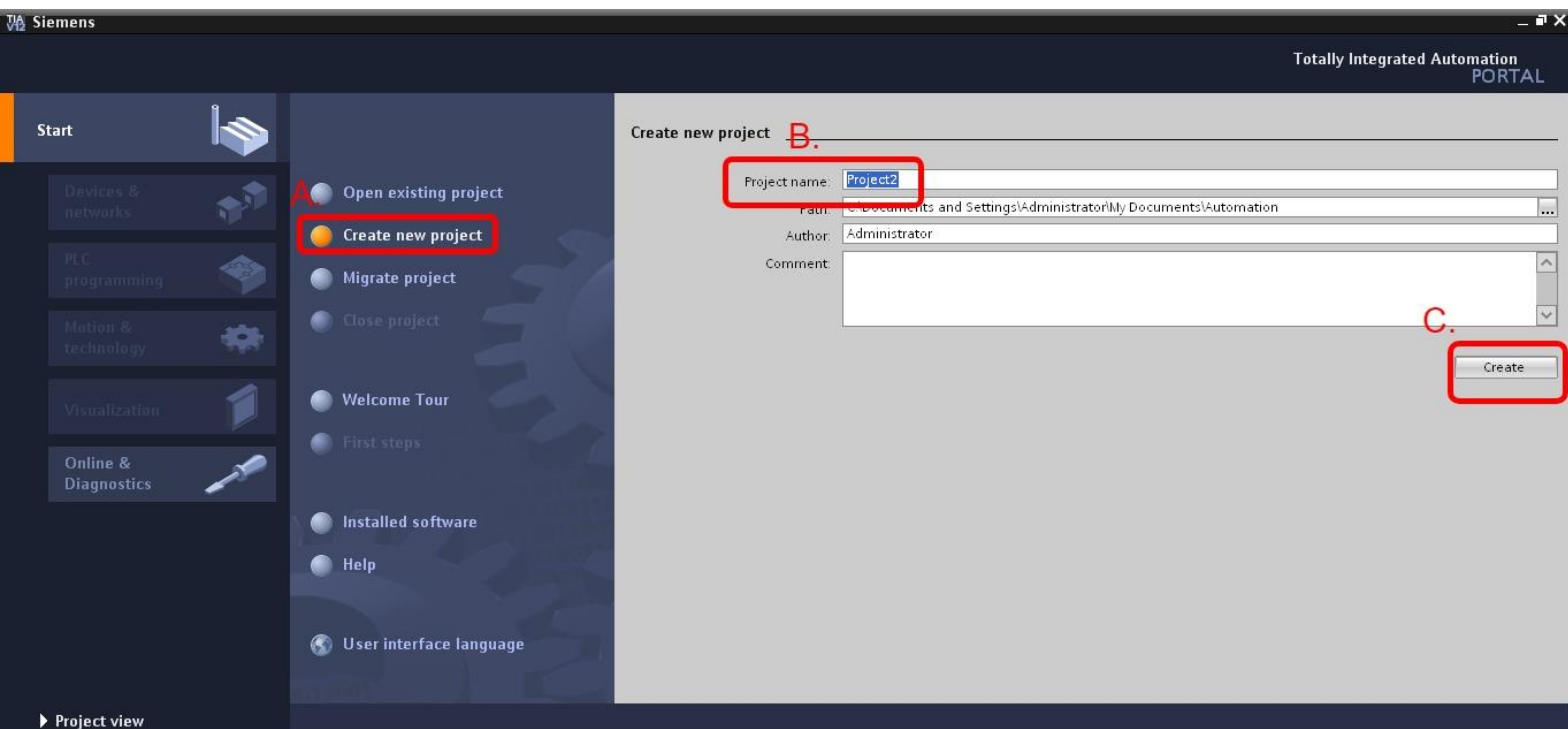


# GW-7552 and SIMATIC STEP 7(TIA Portal) Configurations

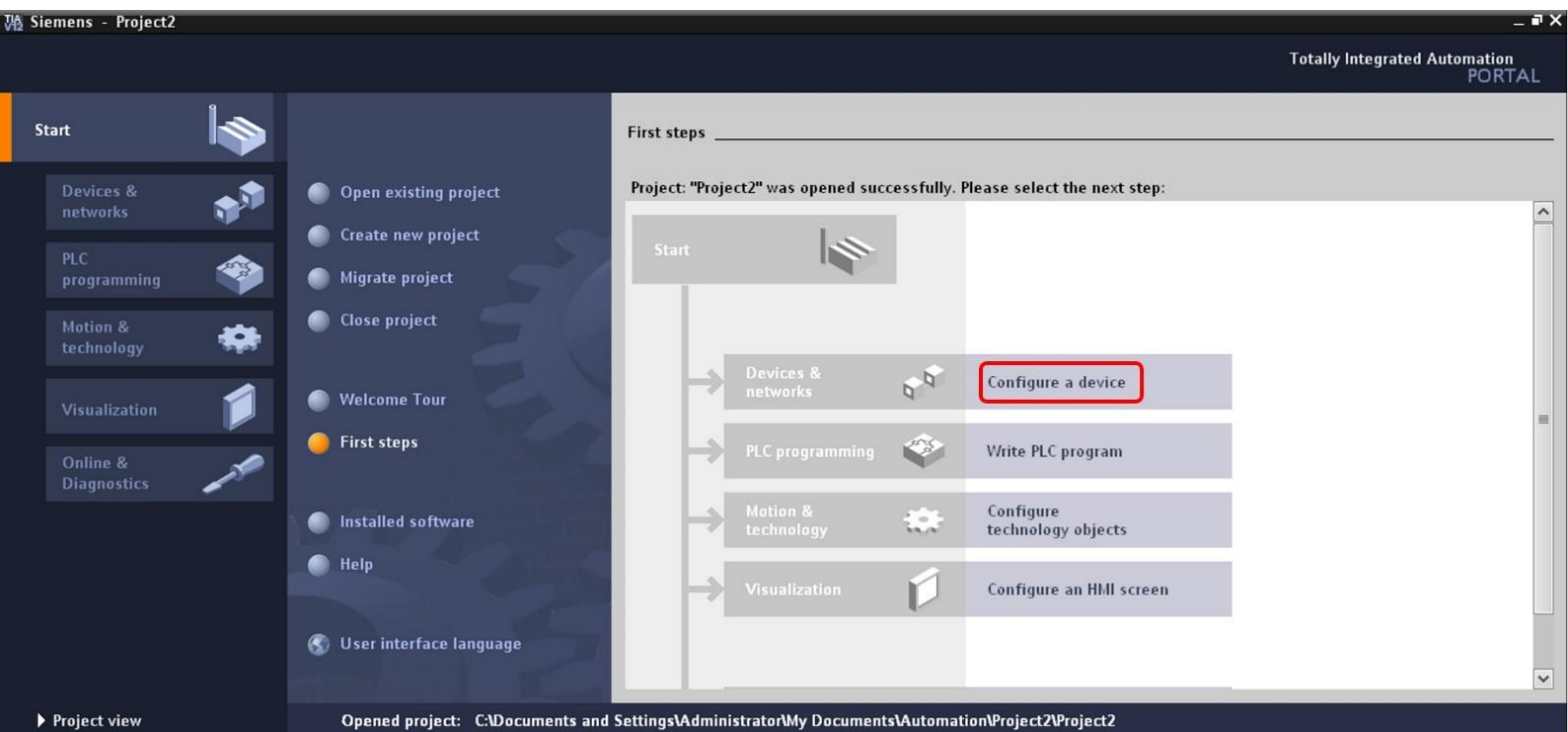
1. Double click "TIA Portal" icon.



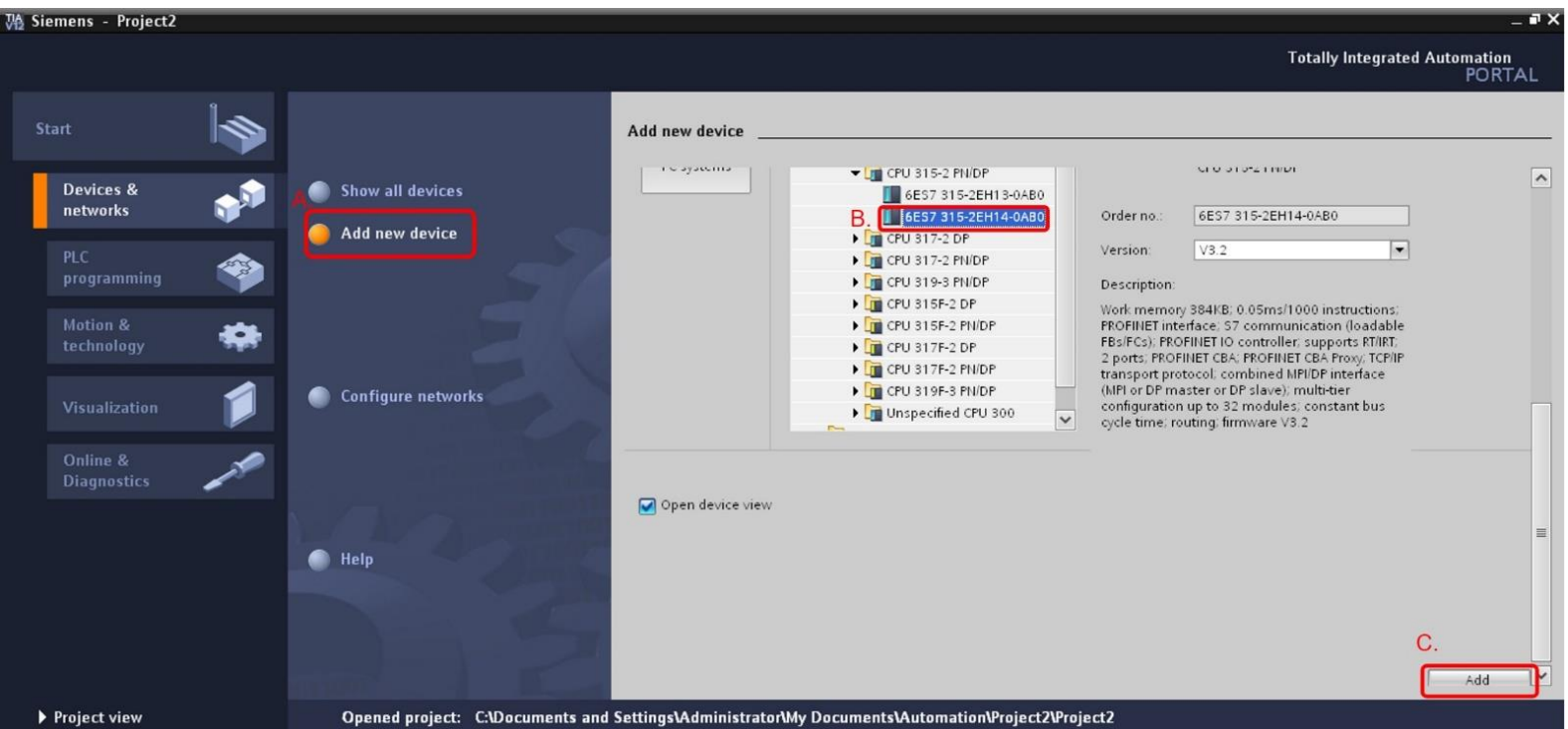
2. (A) Select "Create new project"  
(B) Set project name and click "Create"



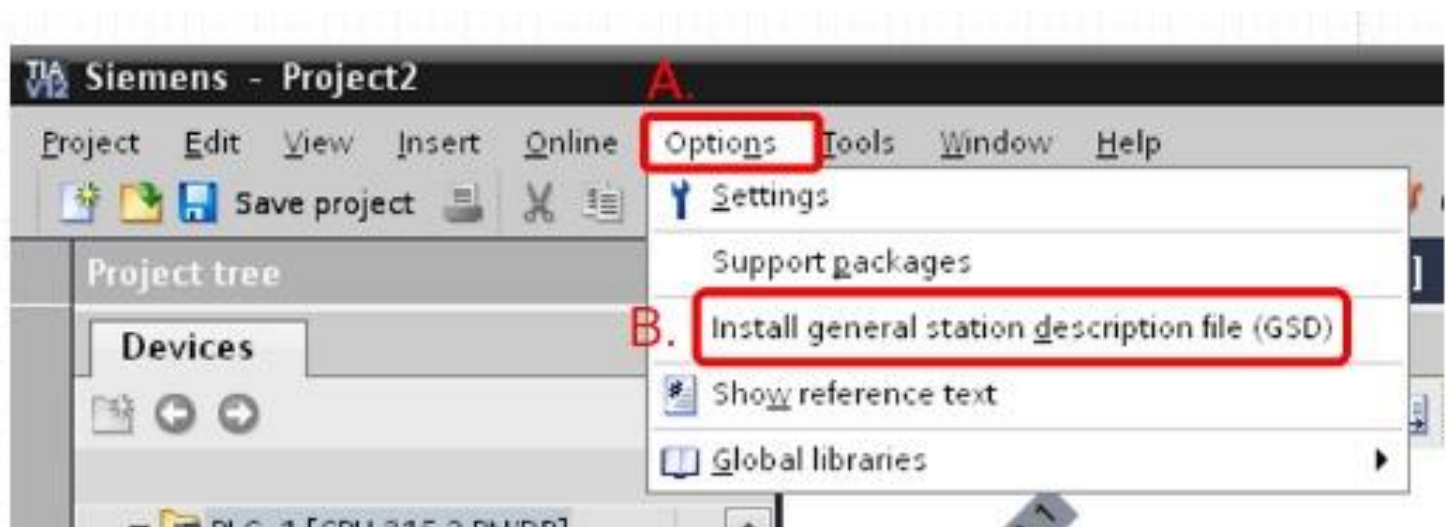
### 3. Select "Configure a device"



- 4. (A) Select "Add new device"
- (B) Select your PLC type and click "Add"

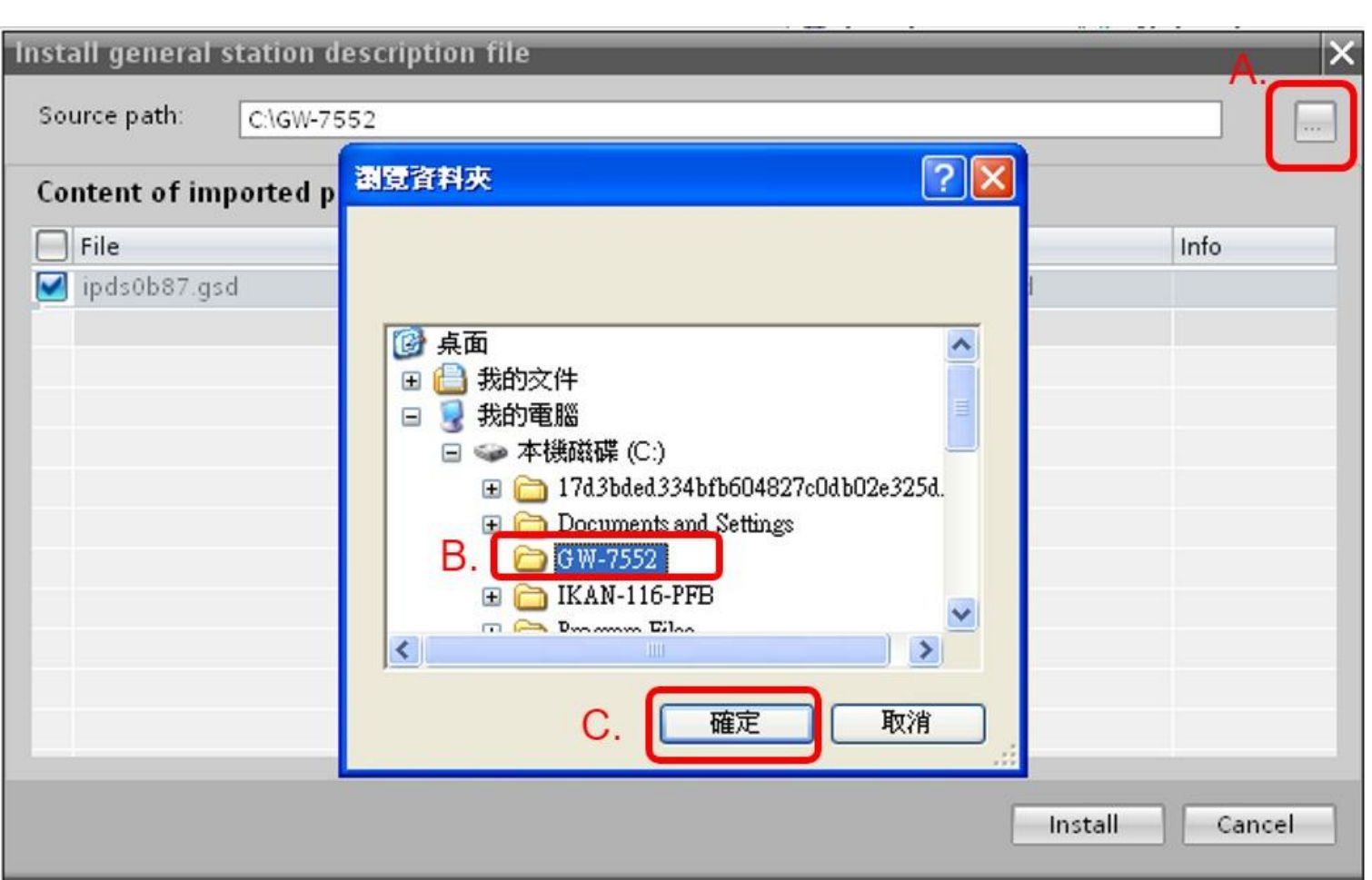


5. Click “Options” and then click “Install general station description file(GSD)”

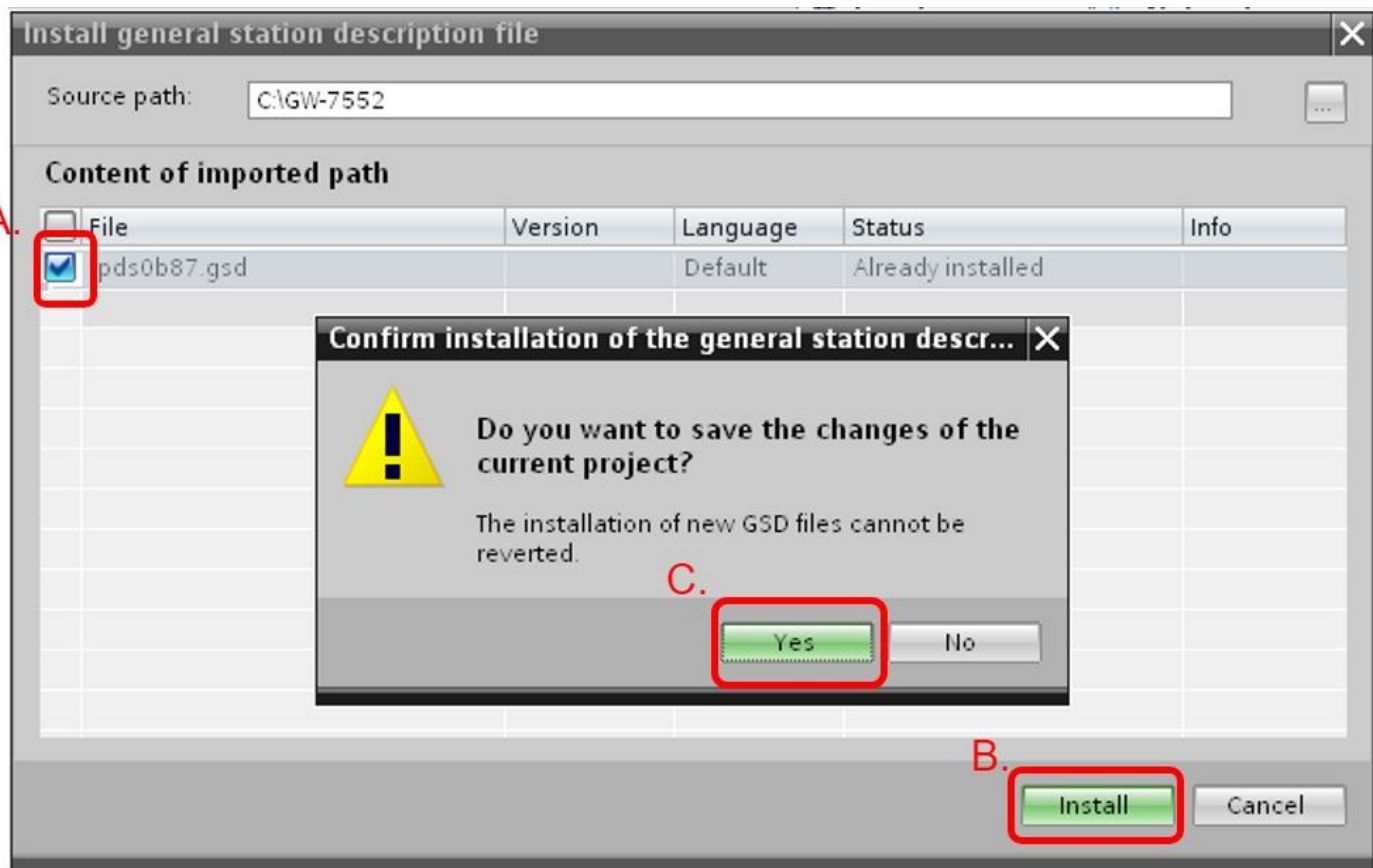


6. (A) Click “...”

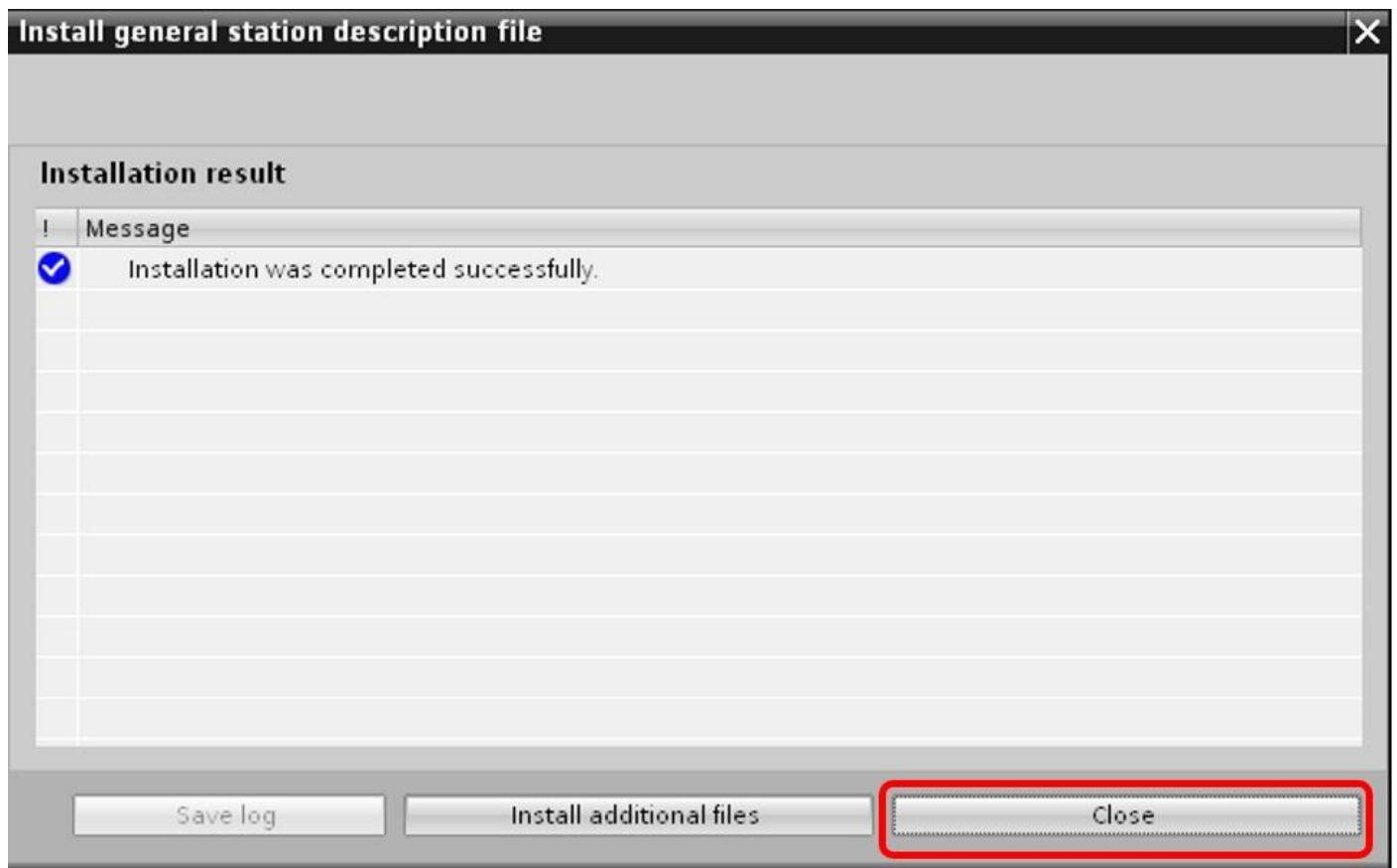
(B) Select the directory of GW-7552's GSD file(ipds0b87.gsd) and click”OK”



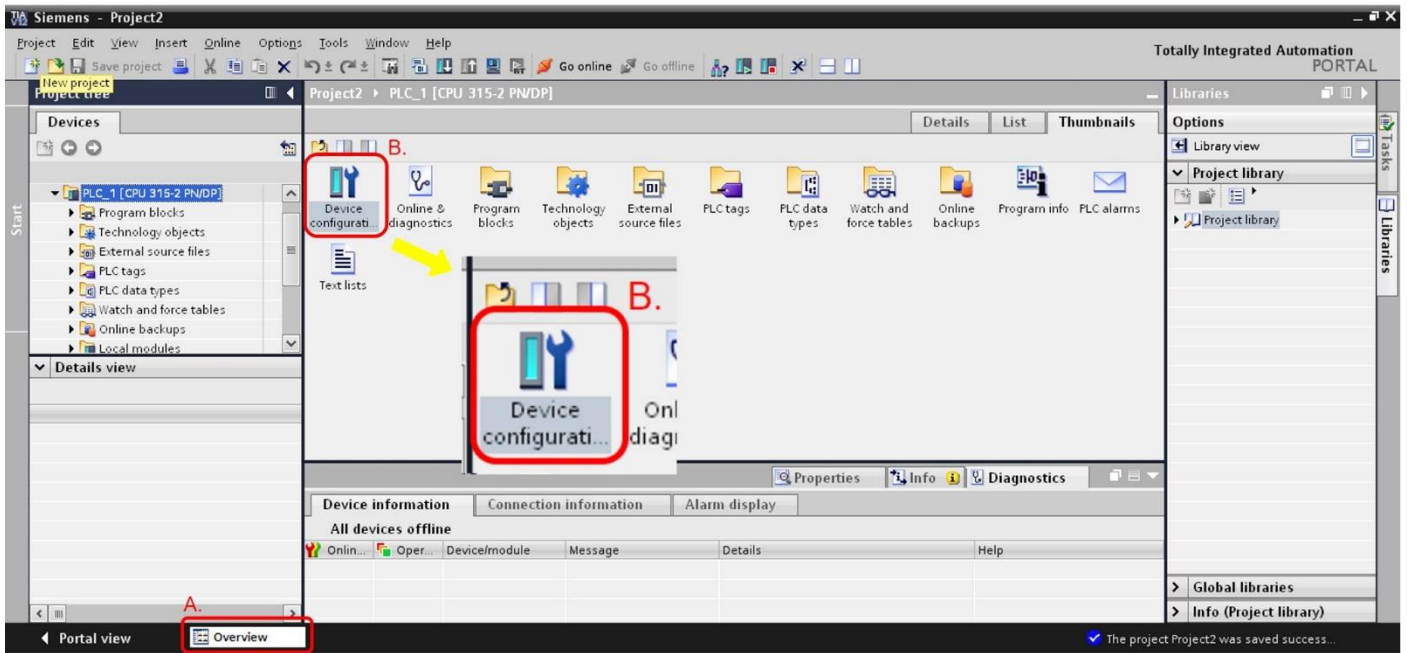
7. (A) Tick the item of GW-7552 GSD file  
(B) Click "Install" and then click "Yes"



8. Click "close"



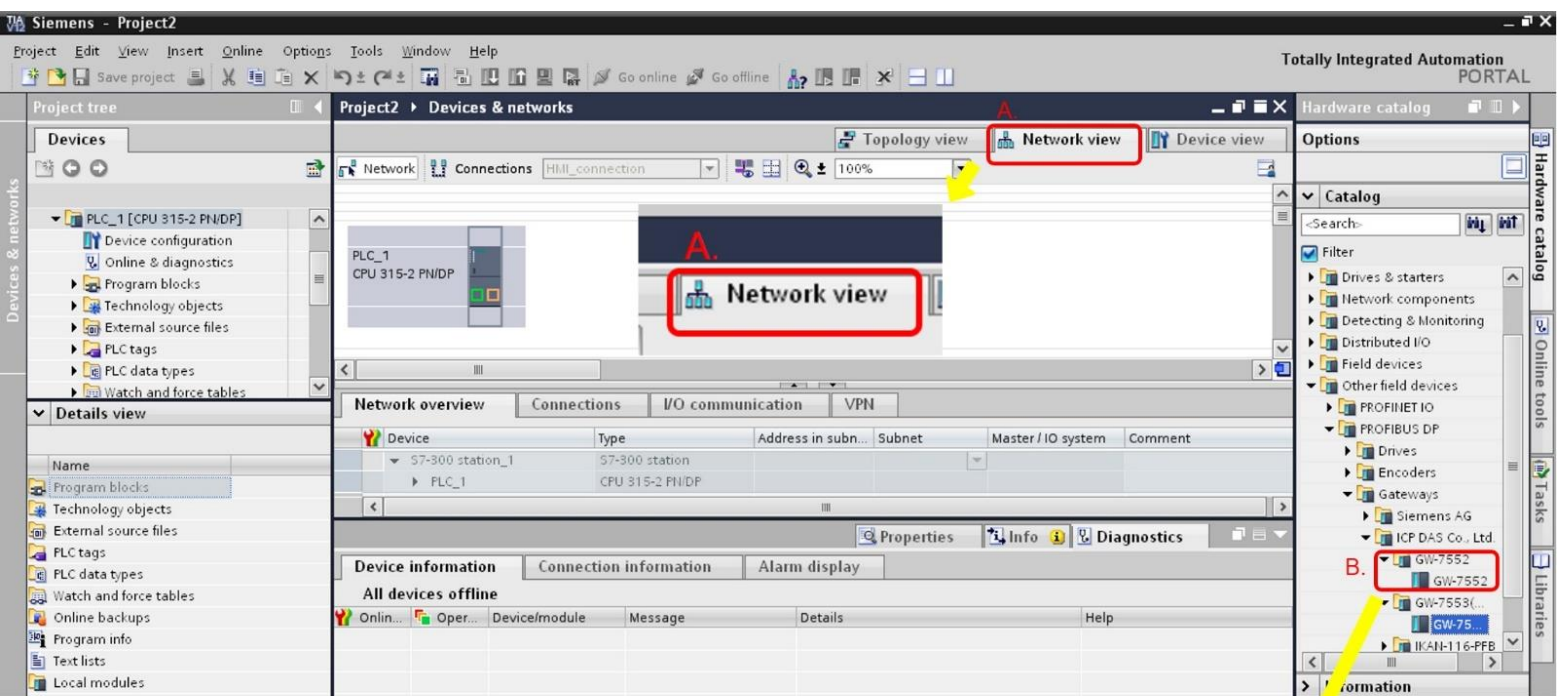
9. Click "Overview" and then click "Device Configuration"



10. (A) Click "Network view" and confirm GW-7552 is available in "Catalog"

(B) The path of GW-7552 in "Catalog" :

"Other field devices" → "PROFIBUS DP" → "Gateways" → "ICP DAS Co. Ltd" → "GW-7552"





11. (A) Double click "GW-7552"

(B) hold down the block which is PROFIBUS DP interface in PLC and move the mouse cursor to the block of GW-7552.

The screenshot shows the SIMATIC Manager interface. The main window is titled "Project2 > Devices & networks" and has a "Find in editor" button. It displays a "Network view" of a "Master system: PLC\_1.DP-Mastersystem (1)". The master system contains a "PLC\_1" (CPU 315-2 PN/DP) and a "Slave\_1" (GW-7552). The slave\_1 also contains a "DP-PORT" block. A red arrow labeled "B." points from the DP-PORT block to the GW-7552 block. Another red arrow labeled "A." points to the GW-7552 block in the "Hardware catalog" on the right. The catalog shows a tree structure with "GW-7552" selected. Below the main window is a "Network overview" table and a "Properties" section.

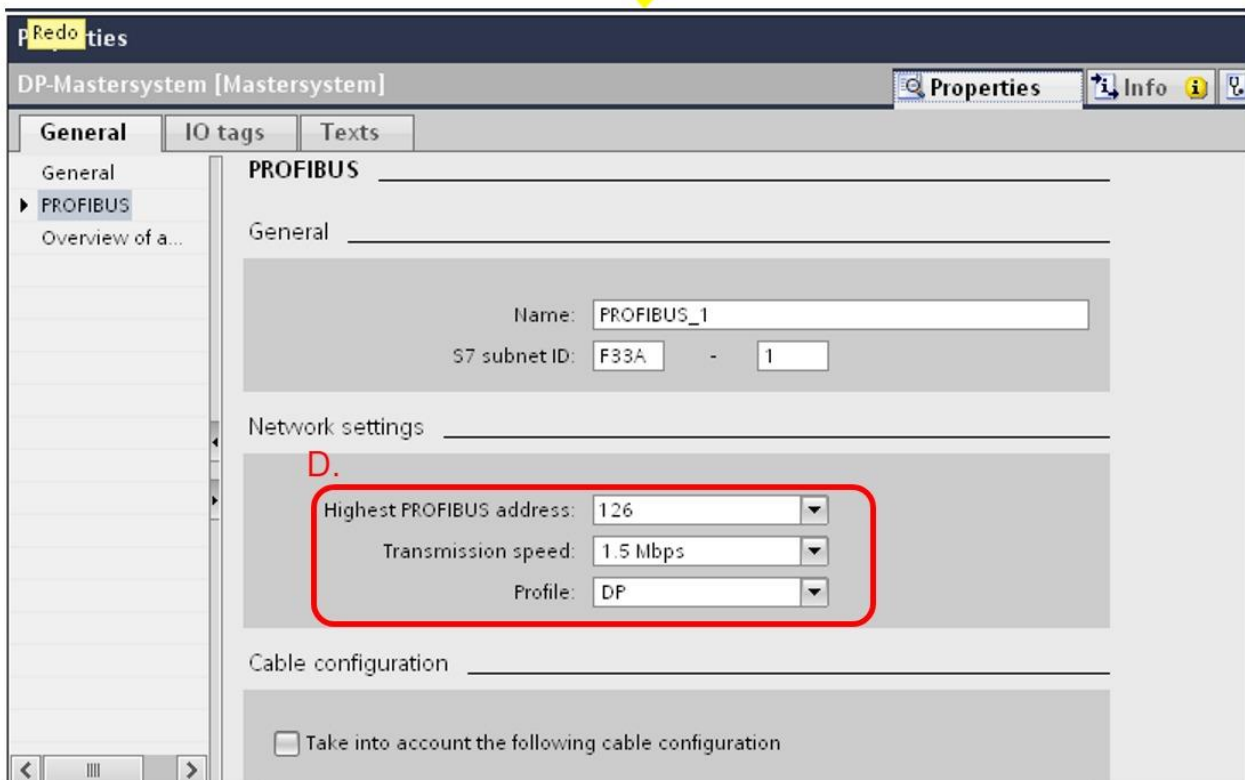
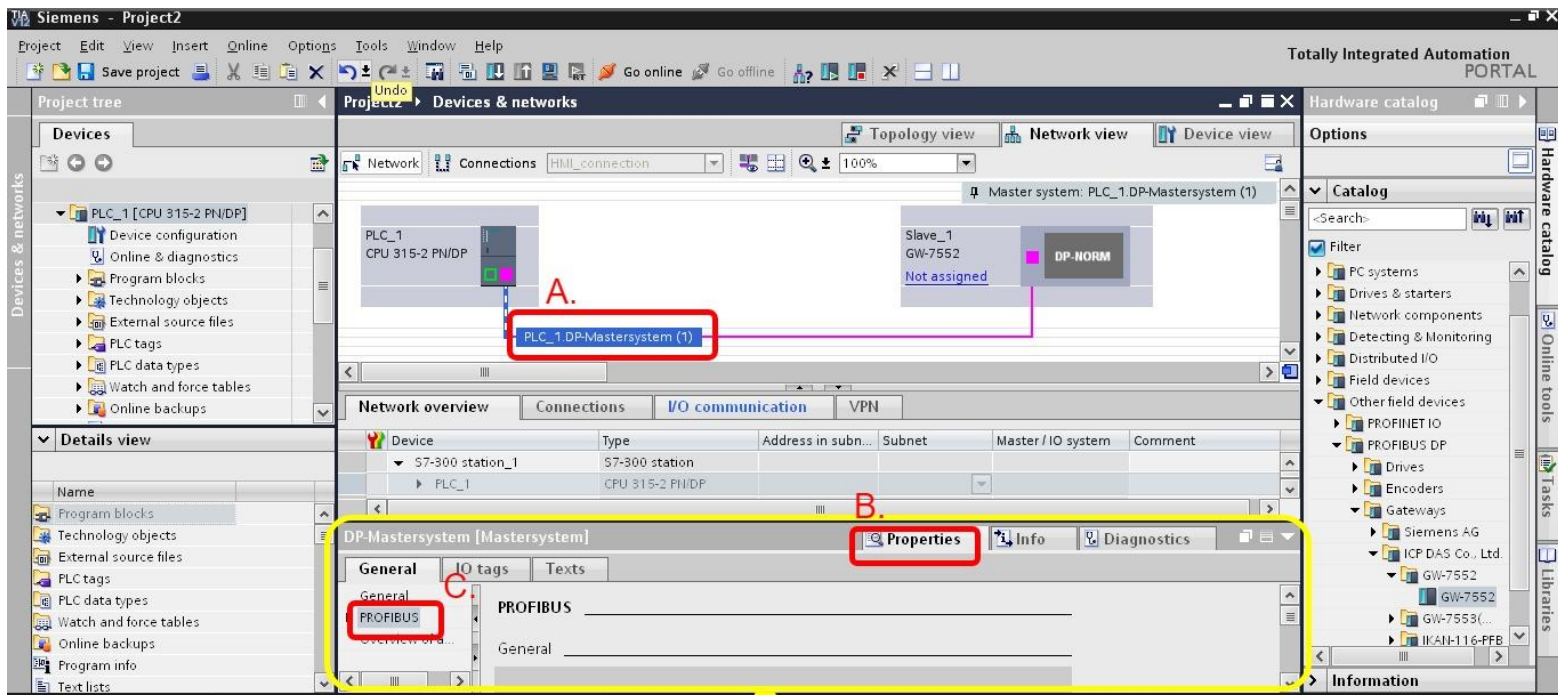
Device	Type	Address in subn...	Subnet	Master / I
S7-300 station_1	S7-300 station			
PLC_1	CPU 315-2 PN/DP			

Properties: Device information, Connection information, Alarm display

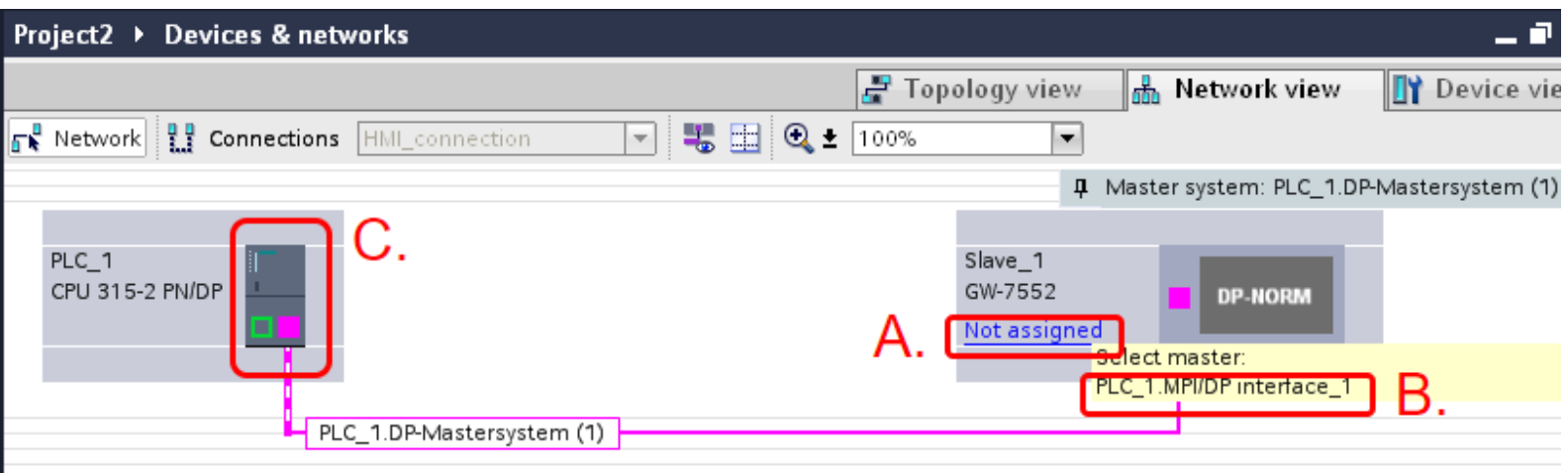
All devices offline

Onlin...	Oper...	Device/module	Message	Details

12. (A) Click "PLC\_1 DP-Mastersystem(1)"
- (B) click "Properties"
- (C) click "PROFIBUS"
- (D) In "Network settings"
  - (1) set "Highest PROFIBUS address"=126,"Profile"=DP.
  - (2) "Transmission speed" : set the value which you need.

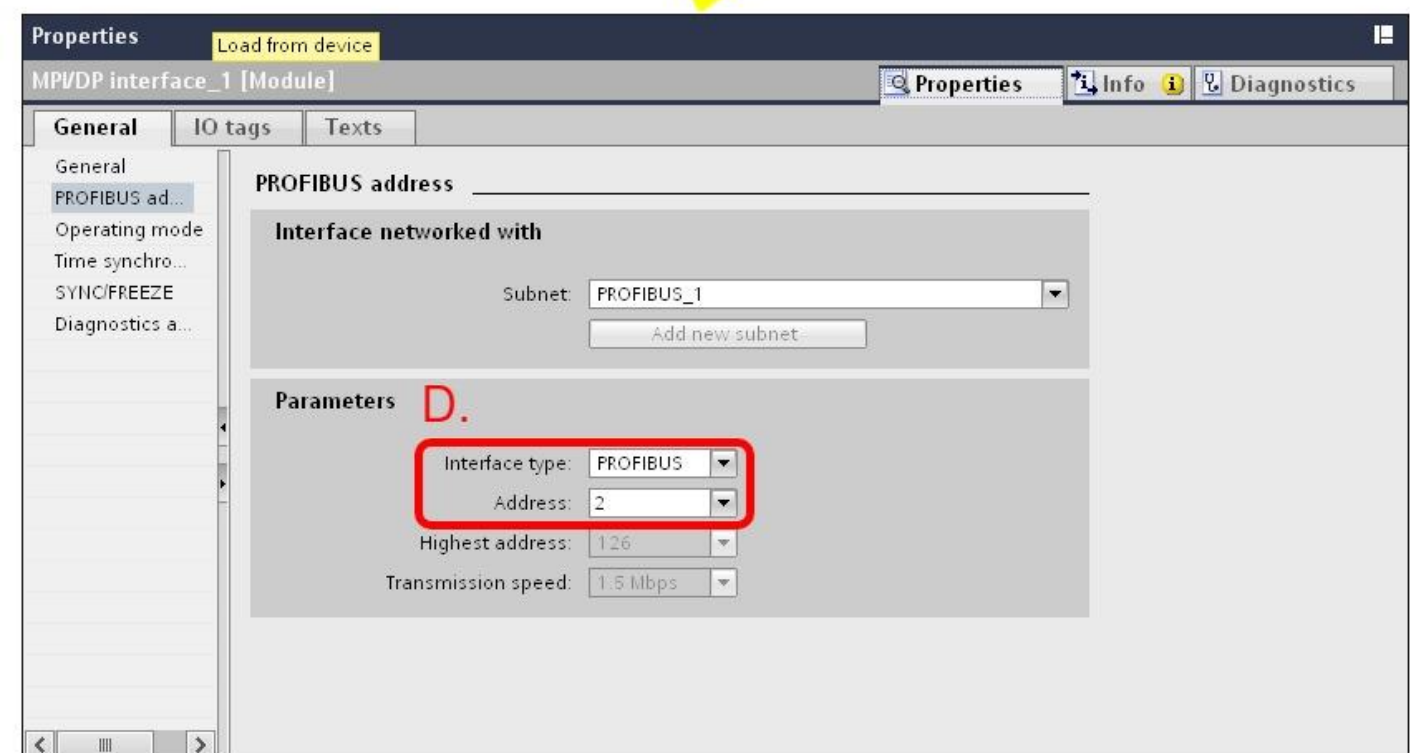
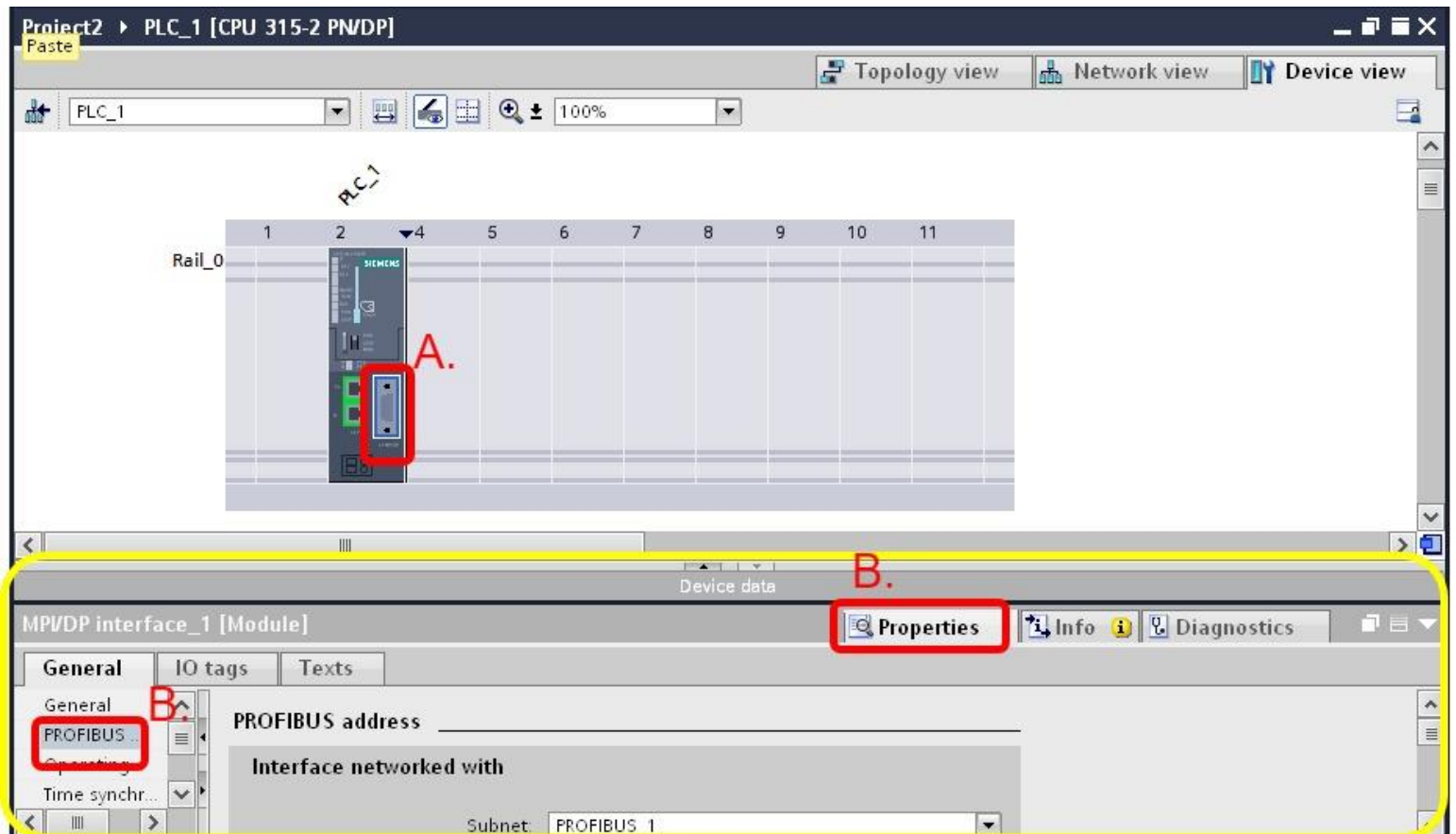


13. (A) If "Not assigned" is shown in GW-7552, click "Not assigned" and select your PLC.  
(C) Double Click your PLC

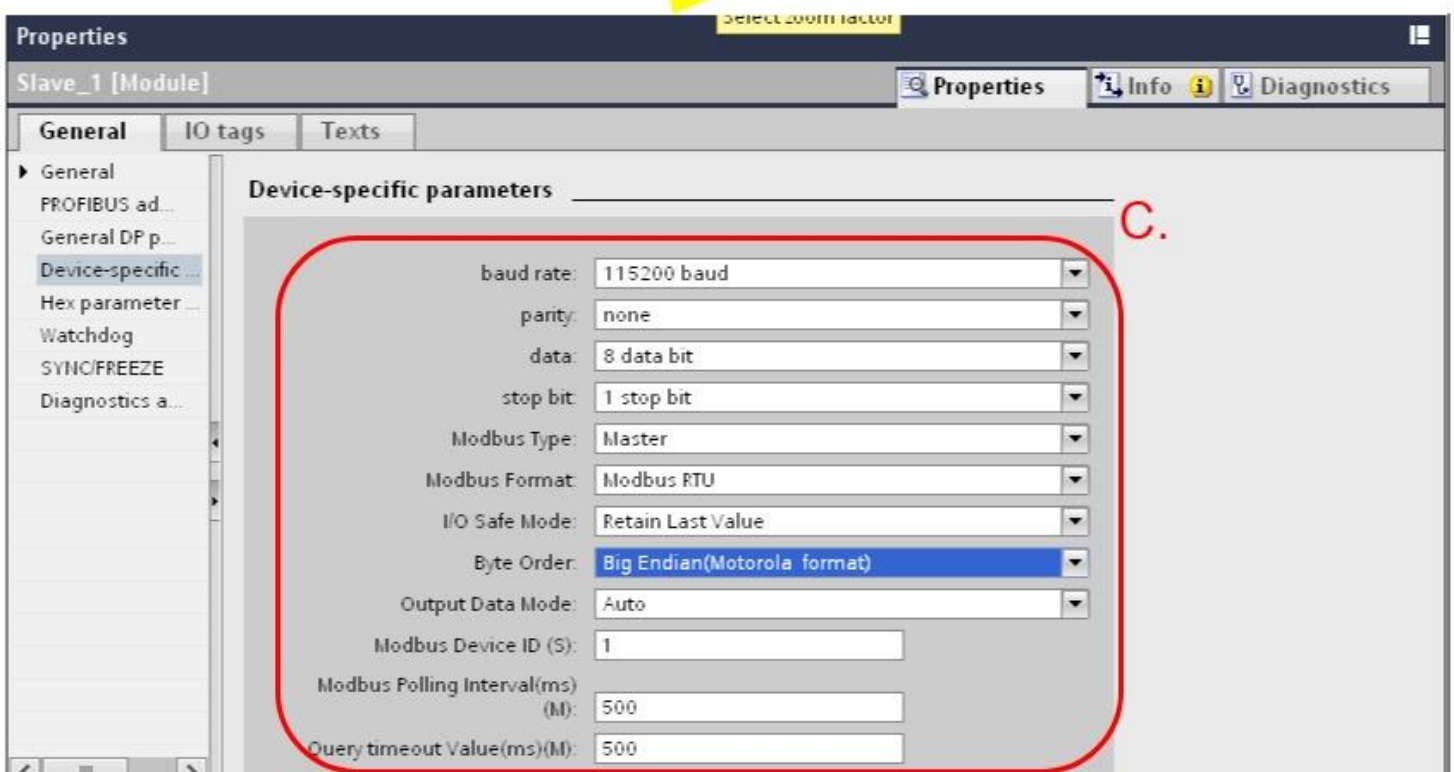
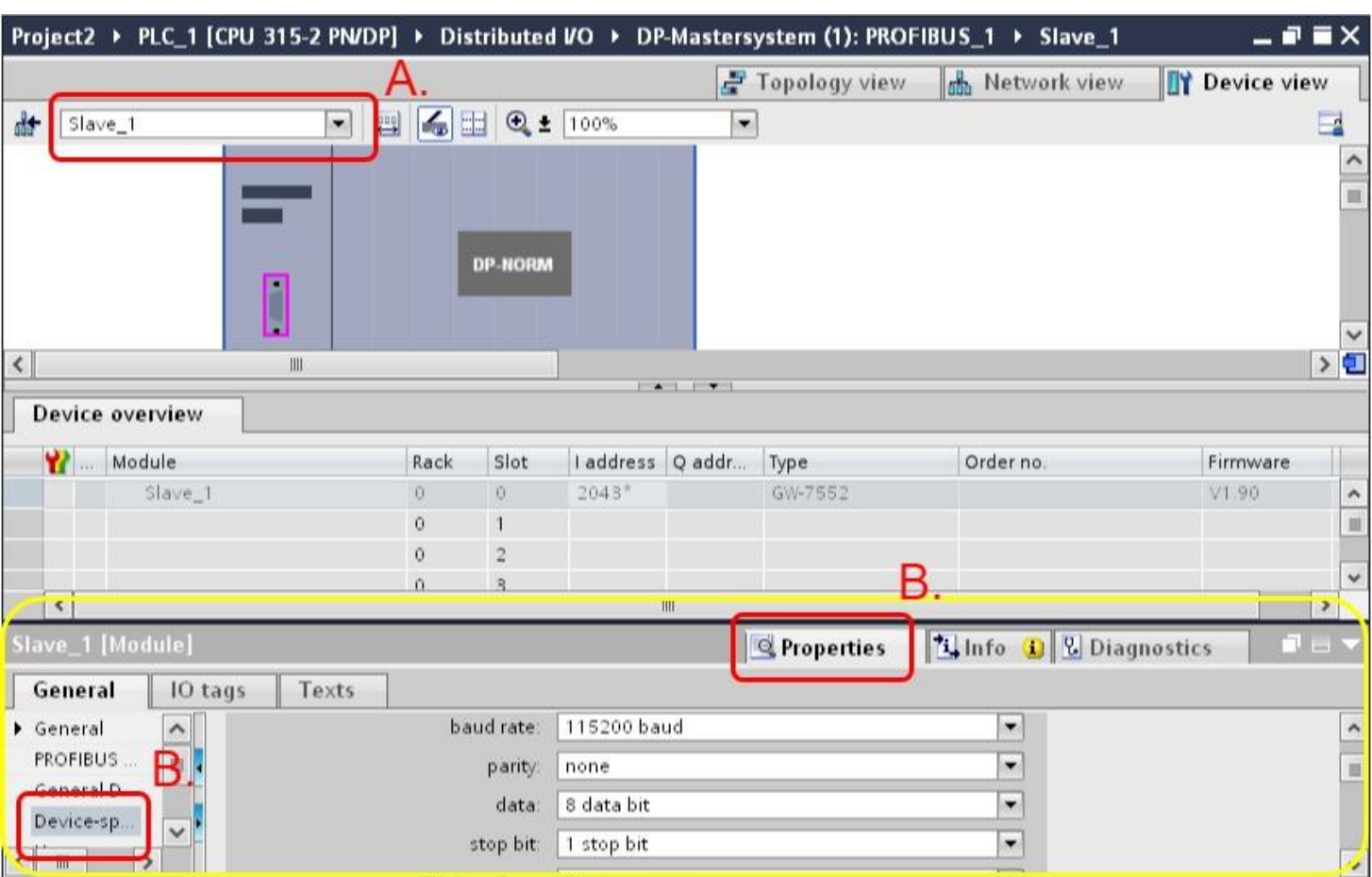




14. (A) Click the PROFIBUS DP interface.
- (B) Click "Properties" and "PROFIBUS address"
- (C) In "Parameters":
  - (1) set "Interface type"=PROFIBUS.
  - (2) "Address": set PROFIBUS address for your PLC.

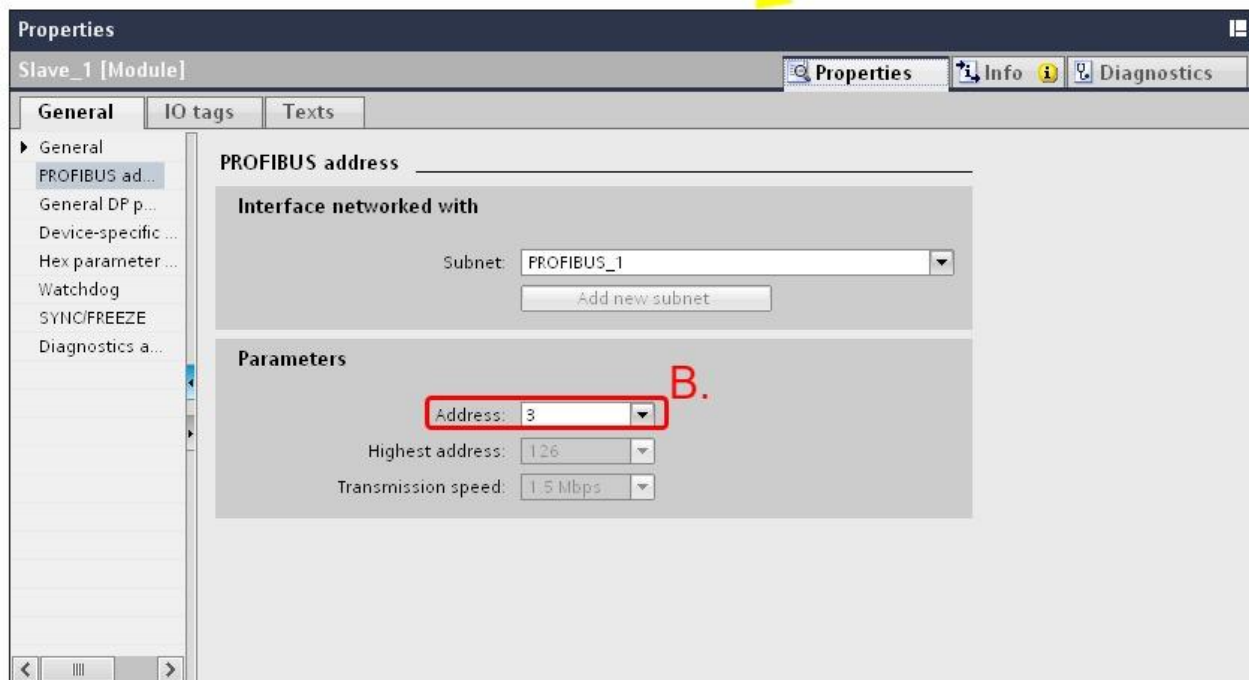
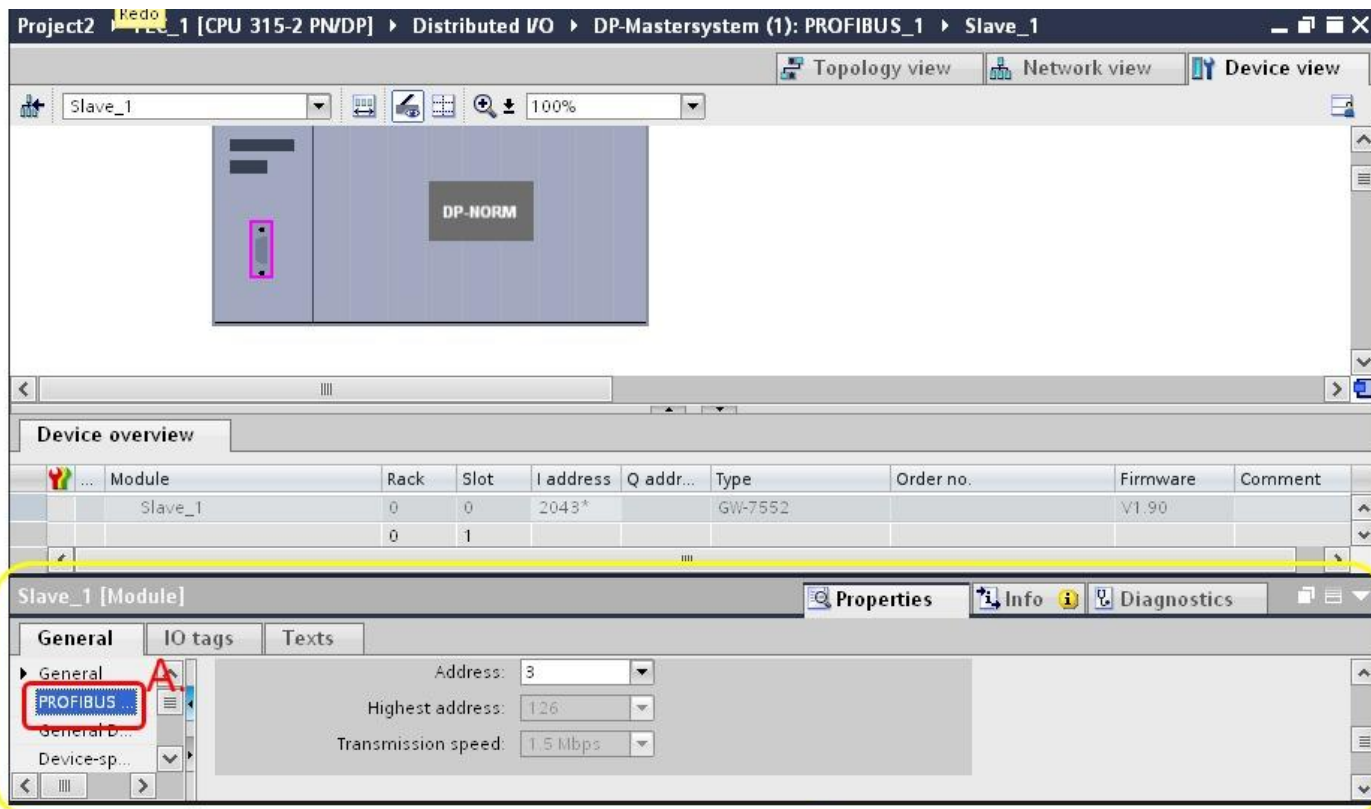


15. (A) Select "Slave\_1" (If GW-7552 is "Slave\_2", select "Slave\_2",etc.)
- (B) Click "Properties" and "Device-specific"
- (C) You can set device parameters of GW-7552 in "Device-specific parameters" (e.g. baud rate, parity, data bit)

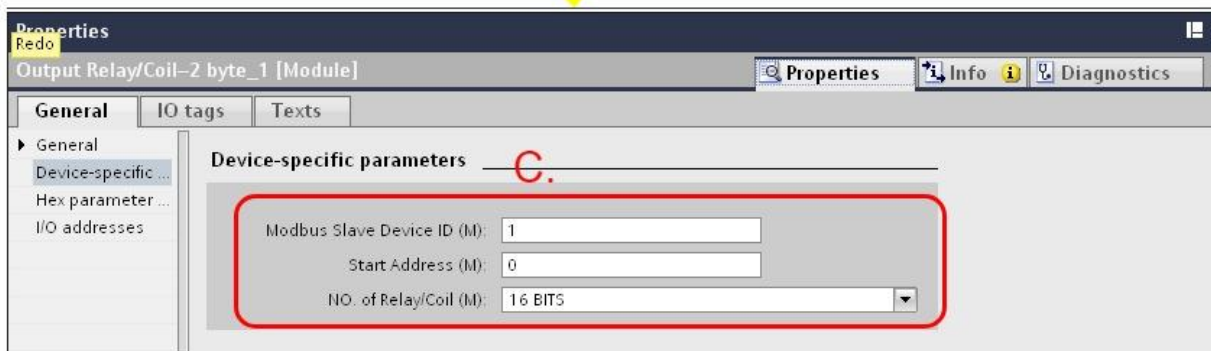
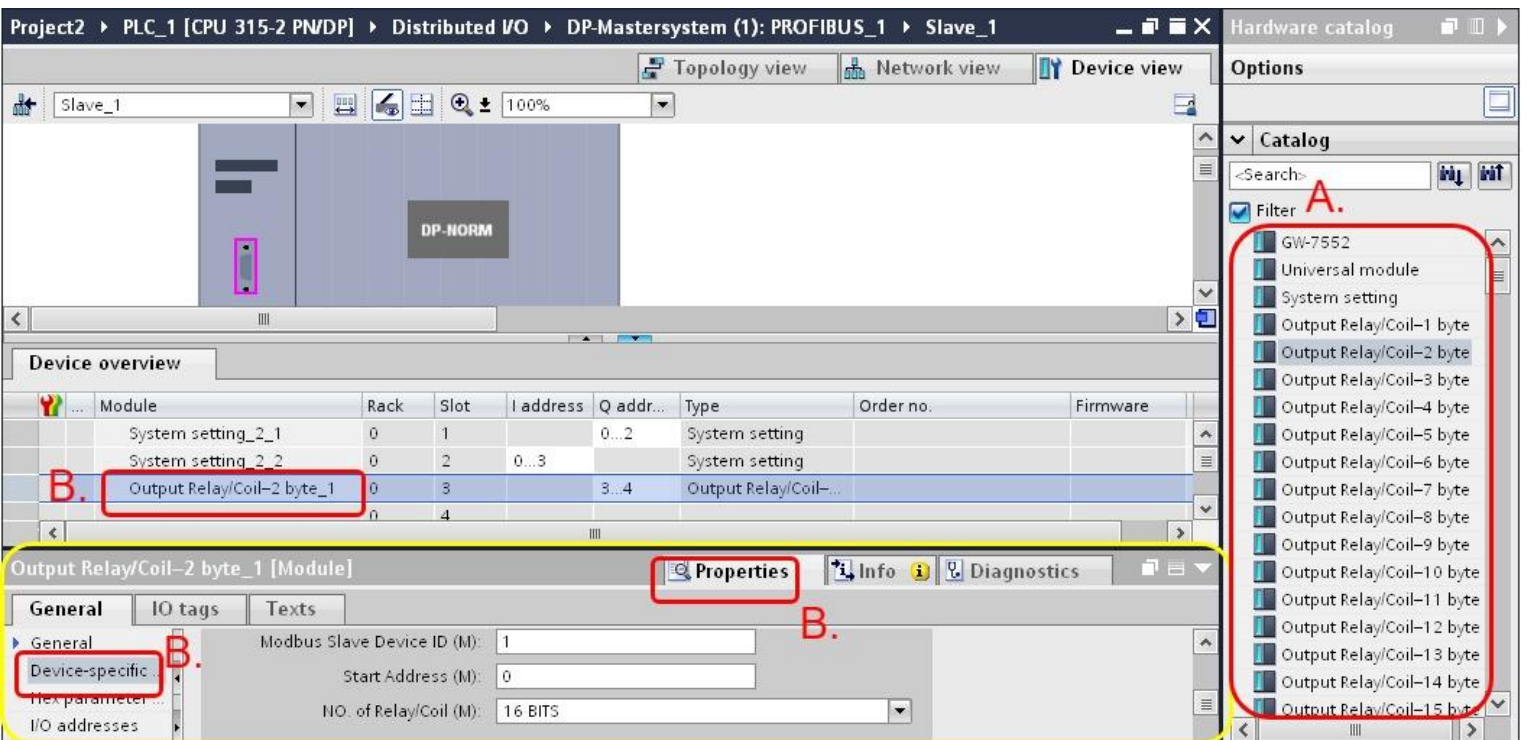


16. (A) Click “PROFIBUS address”

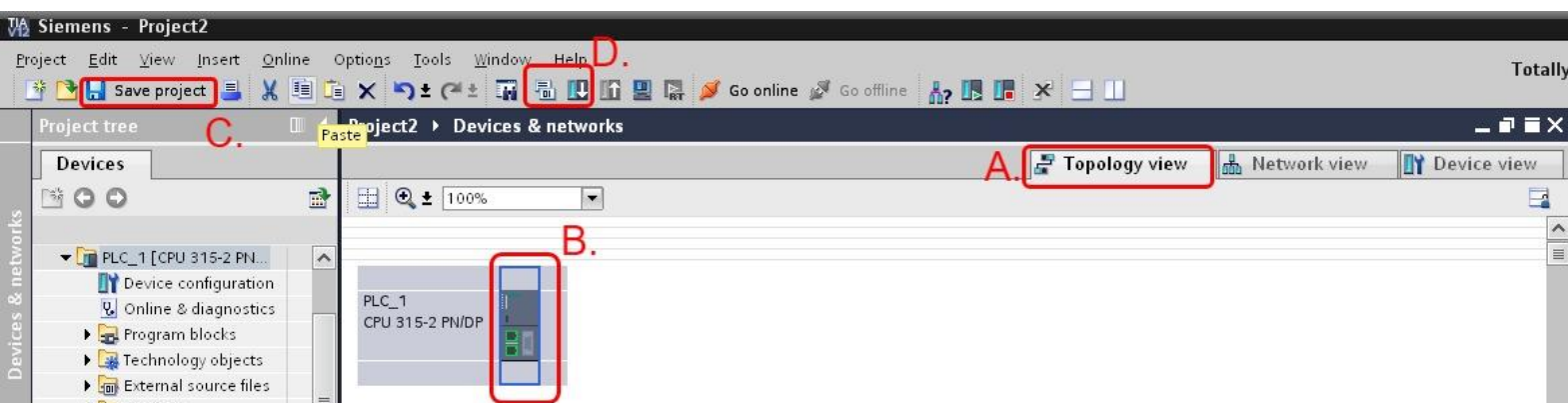
(B) You can set PROFIBUS address of GW-7552 in “PROFIBUS address”



17. (A) Double click “System module” and any IO module which you need.
- (B) Click the IO module and “Properties” and “Device-specific”
- (C) You can set the module parameters in “Device-specific parameters”



18. (A) Click “Topology view”
- (B) Click your PLC
- (C) Click “Save project”
- (D) Click “compile” and “Download to Device”





- 19. (A) Select your PG/PC interface
- (B) If PC connects PLC successful, the background will be orange
- (C) Click "Load"

Configured access nodes of "PLC\_1"

Device	Device type	Slot	Type	Address	Subnet
PLC_1	CPU 315-2 PN/DP	2 X2	PN/IE	192.168.6.212	
	CPU 315-2 PN/DP	2 X1	PROFIBUS	2	PROFIBUS_1

Type of the PG/PC interface: **PN/IE** (A)

PG/PC interface: **Intel(R) PRO/1000 T Serve...** (A)

Connection to subnet: Direct at slot "2 X2"

1st gateway: [Empty]

Compatible devices in target subnet:  Show all compatible devices

Device	Device type	Type	Address	Target device
PLC_1	CPU 315-2 PN/DP	PN/IE	192.168.6.212	PLC_1
	—	PN/IE	Access address	—

Flash LED

Refresh

Online status information:

- A connection to the device with address 192.168.6.212 could be established.
- Scan completed. 1 compatible devices of 1 accessible devices found.
- Retrieving device information...

**Load** (C) Cancel

- 20. Click "Load"

Load preview

Check before loading

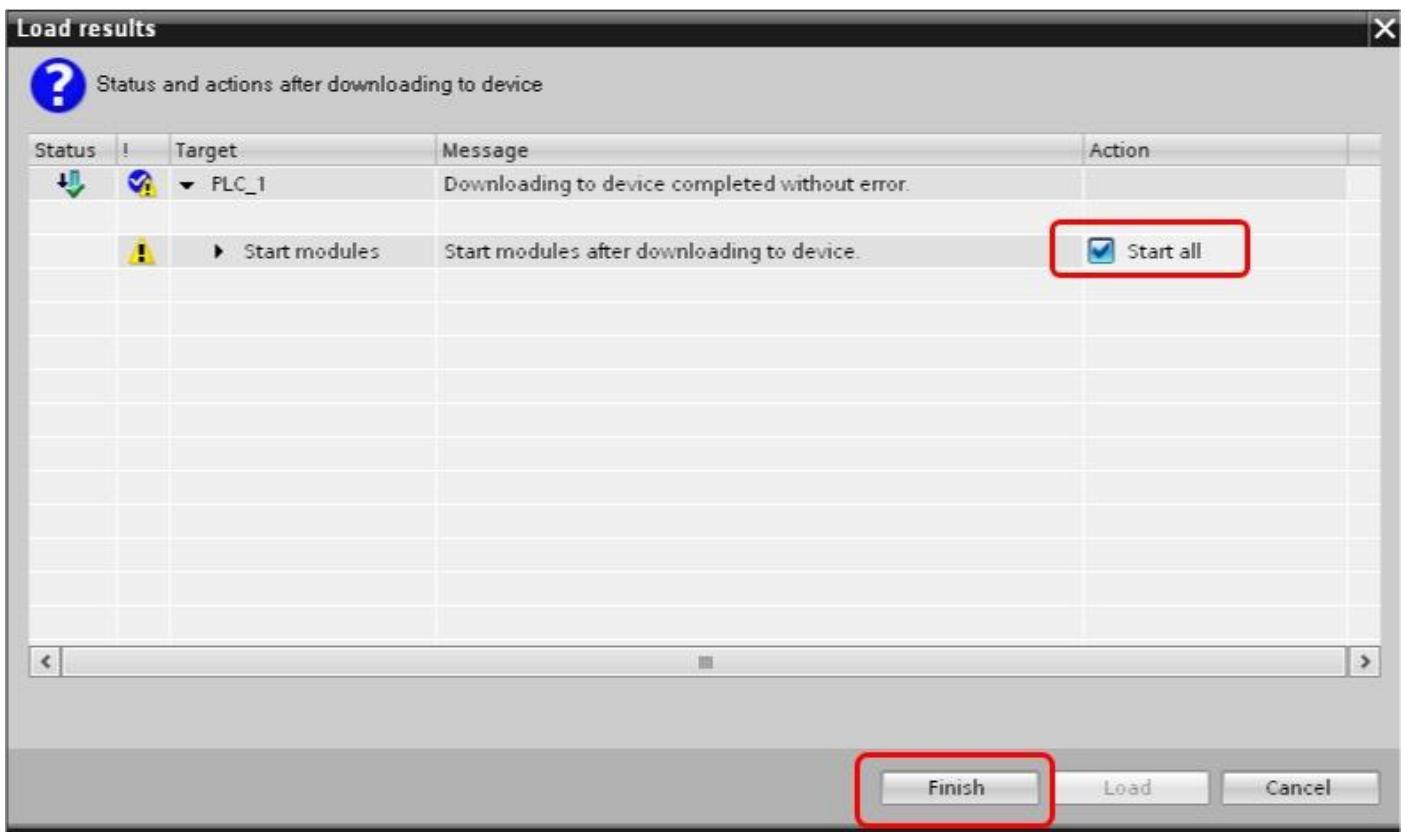
Status	!	Target	Message	Action
	<input checked="" type="checkbox"/>	PLC_1	Ready for loading.	
<input checked="" type="checkbox"/>		Stop modules	All modules will be stopped for downloading to device.	Stop all
<input checked="" type="checkbox"/>		Device configurat...	Delete and replace system data in target	Download to device
<input checked="" type="checkbox"/>		Software	Download software to device	Consistent download

Refresh

Finish **Load** Cancel



21. Tick "Start all" and click "Finish"



22. (A) Click "Go online"  
(B) Click "Start CPU"

