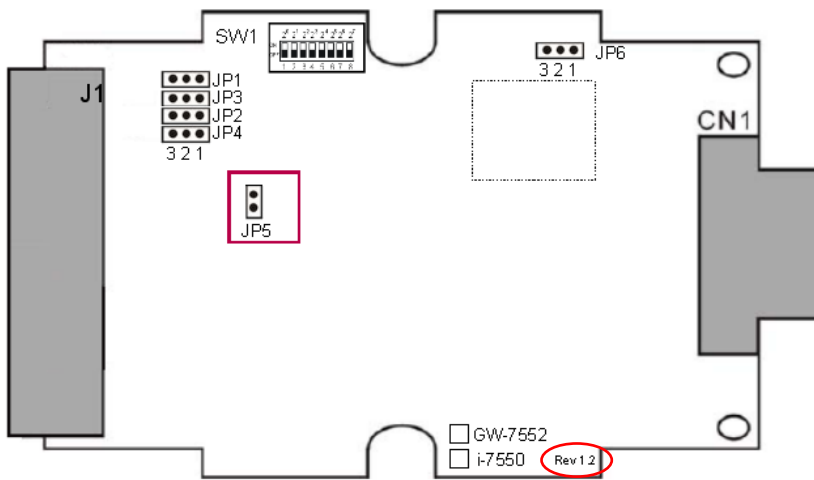


How to confirm the firmware version?

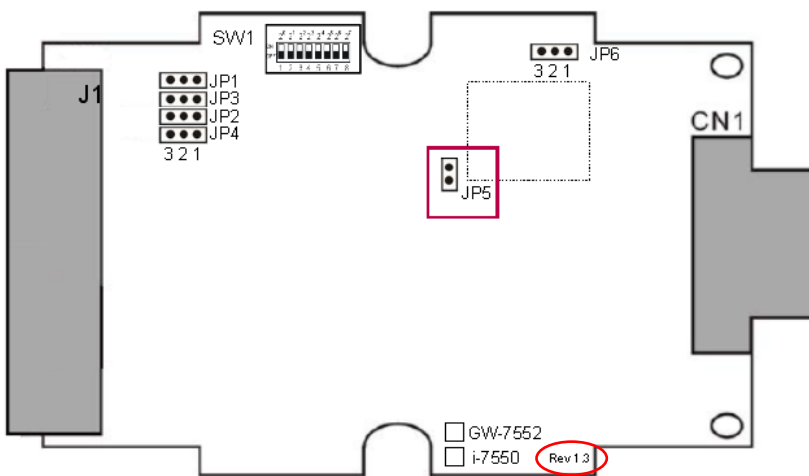
Steps to get the firmware version:

Step 1: Open the cover of GW-7552

Step 2: Close the initial pin (JP5) by jumper (Default is open)

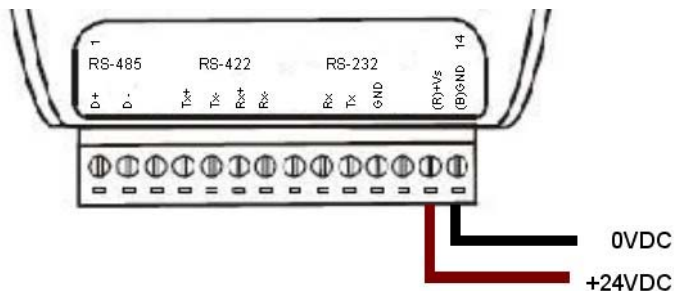


Rev 1.2

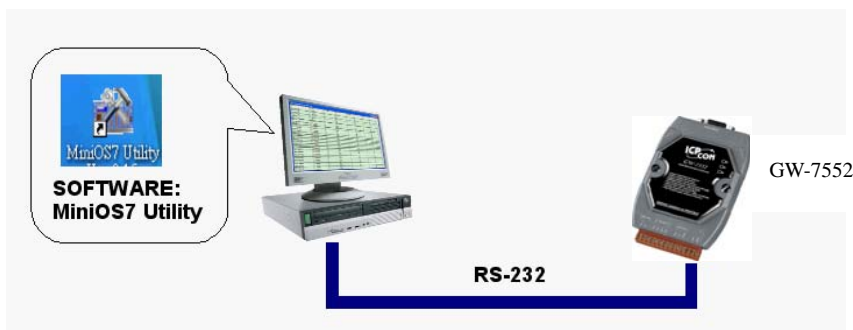


Rev 1.3

Step 3: Connect the power supply



Step 4: Connect the PC and the GW-7552 by Com Port (RS-232)

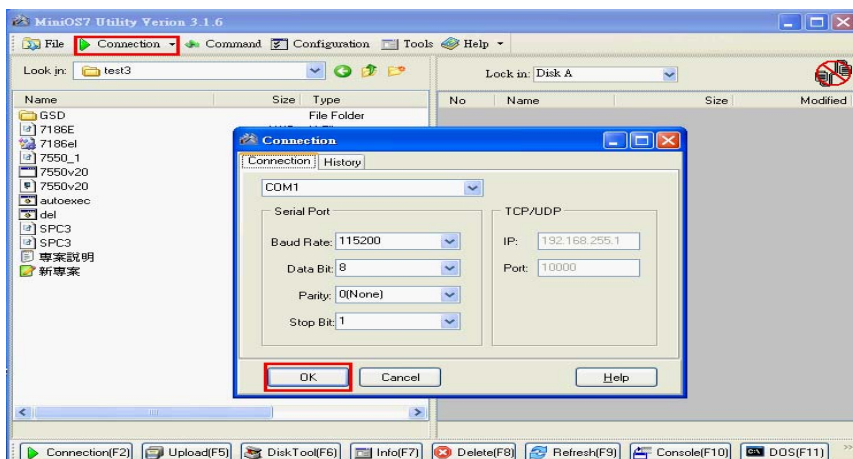


Step 5: Turn the power on

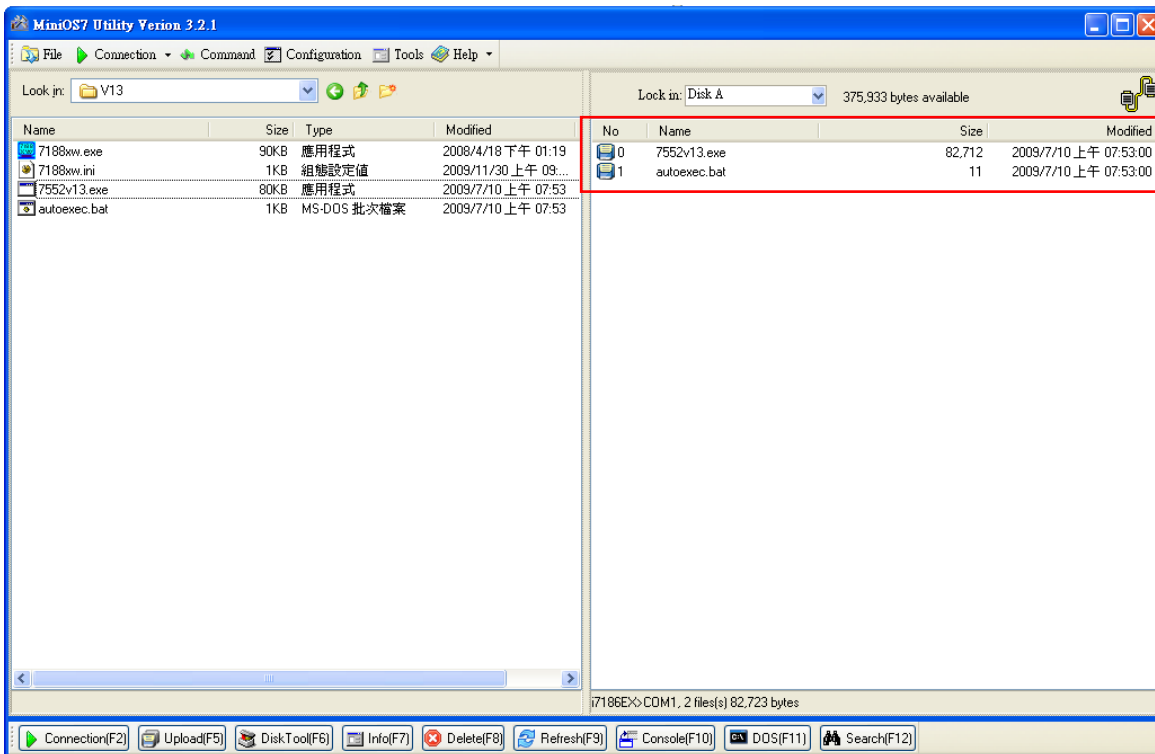
Step 6: Run MiniOS7 utility on the PC (You can download MiniOS7 Utility at

[http://ftp.icpdas.com.tw/pub/cd/8000cd/napdos/minios7/utility/minios7_utility/.](http://ftp.icpdas.com.tw/pub/cd/8000cd/napdos/minios7/utility/minios7_utility/))

Step 7: Connect MiniOS7 Utility and the GW-7552 by click the connection button.



Step 8: Get the firmware version

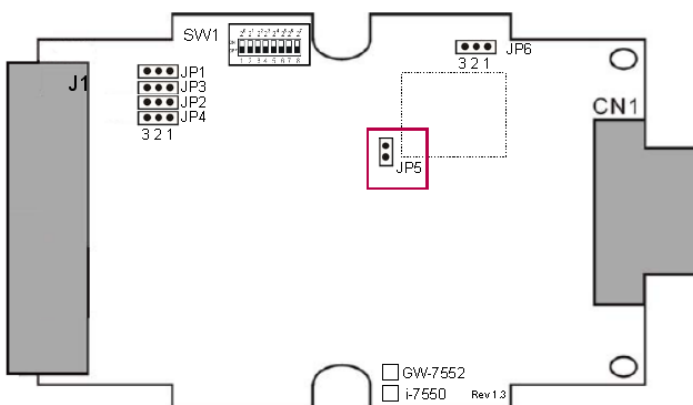


7552v13.exe is the firmware name of GW-7552 in this example.

It means the firmware version is 1.3

Step 9: Turn the power off

Step 10: Open the initial pin (JP5) by remove the jumper



Step 11: Close the cover of GW-7552