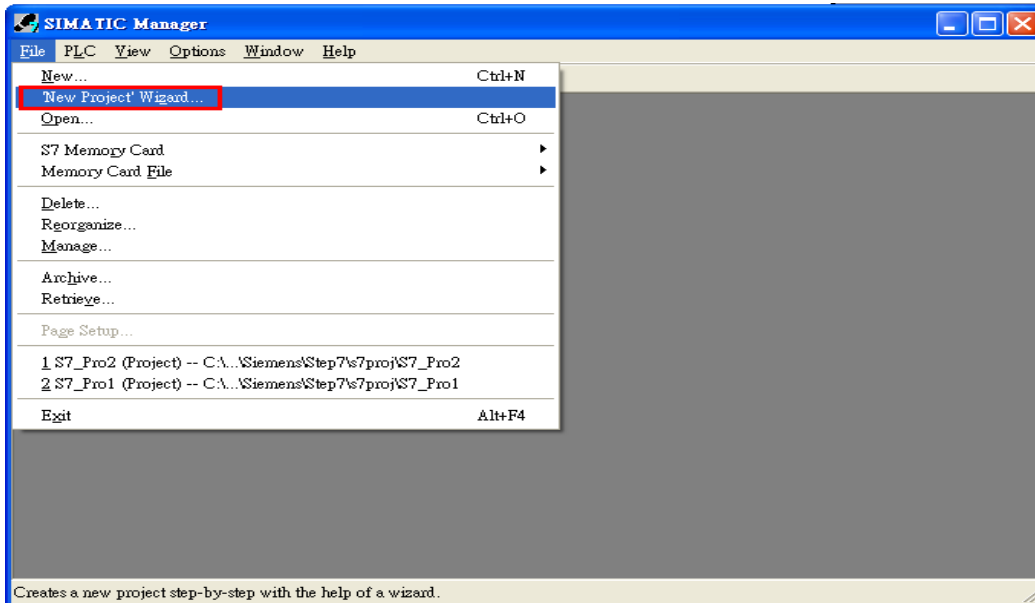


GW-7552 and SIMATIC STEP 7 Configurations

1. Double Click “SIMATIC Manager” icon to open “SIMATIC Manager”



2. Open “New Project Wizard”

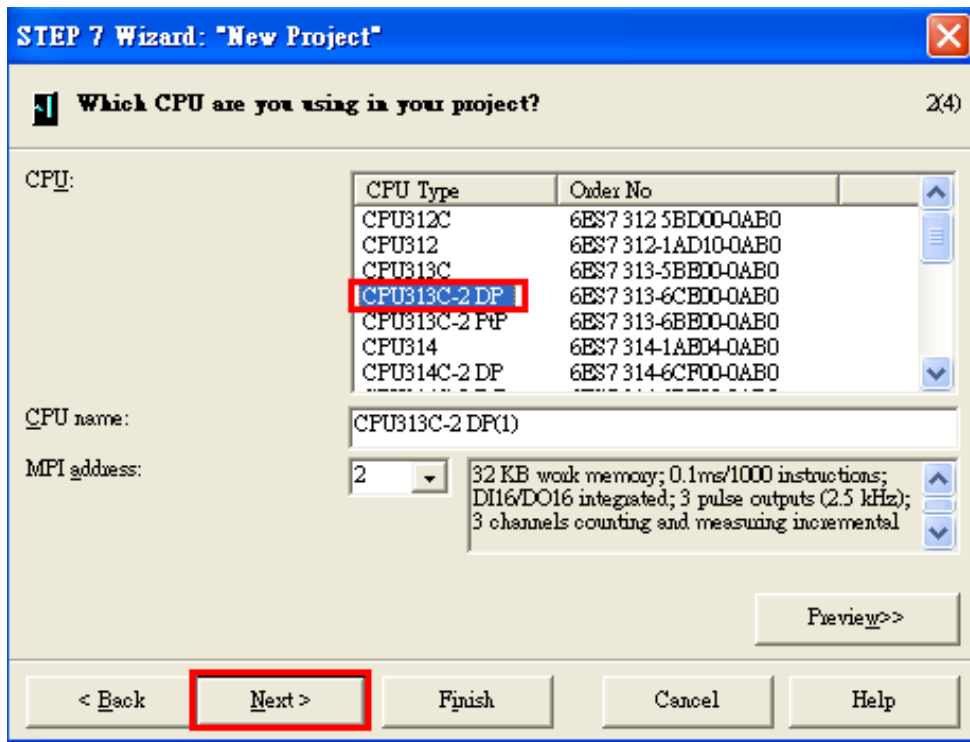


3. Set up Project

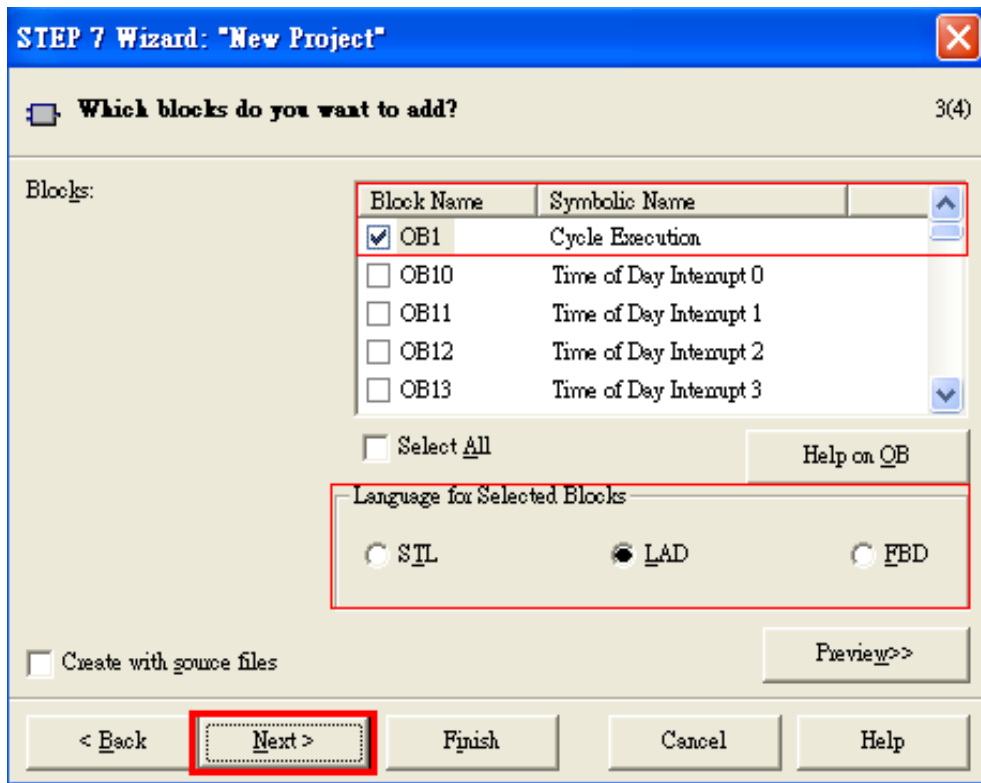
a. Click”Next”



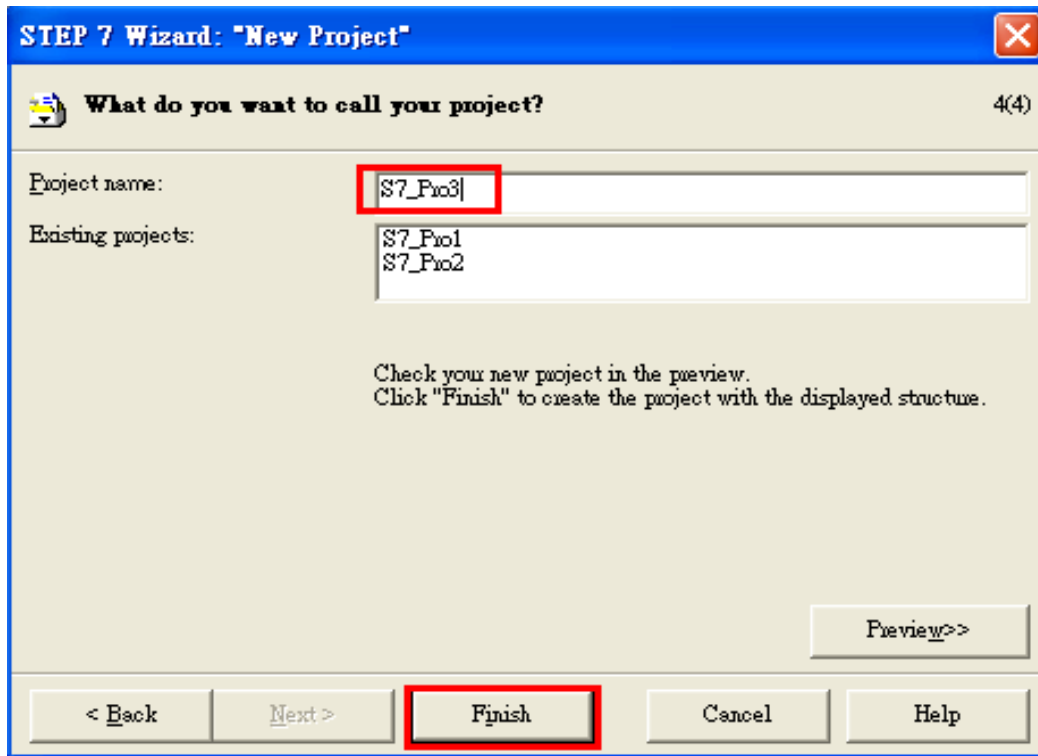
b. Select CPU type then click "Next"



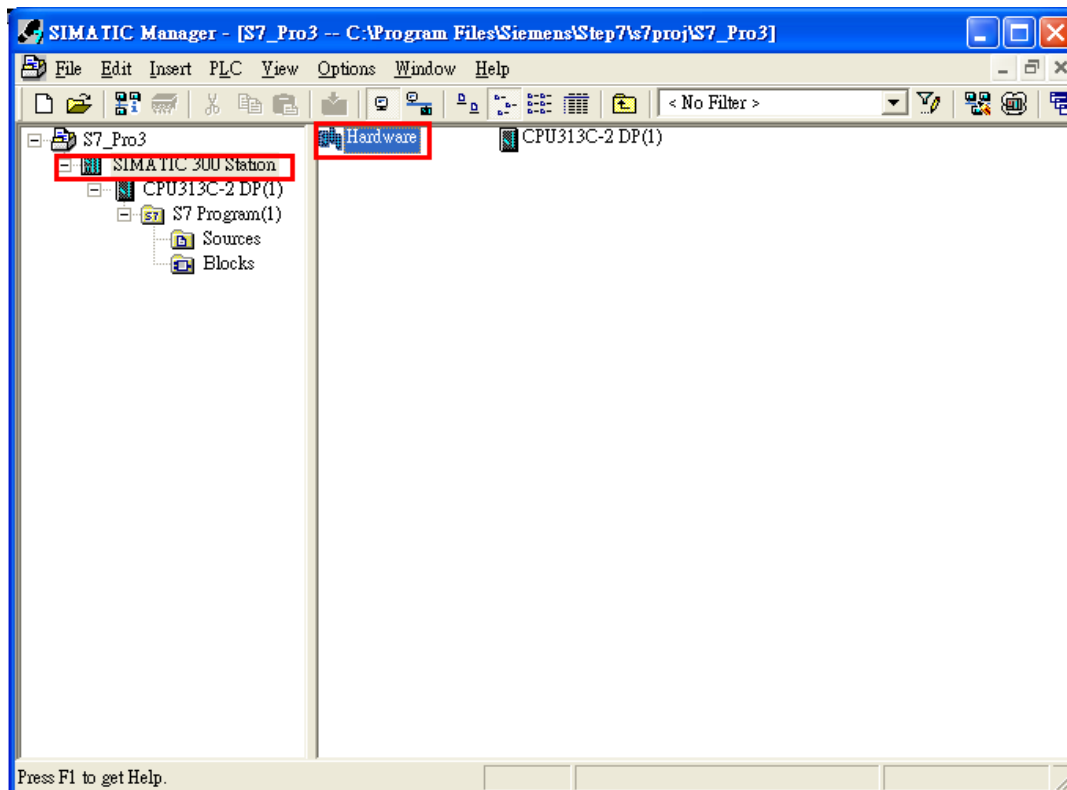
c. Select Blocks and Language for Selected Blocks then click "Next"



d. Set project name then click "Finish"



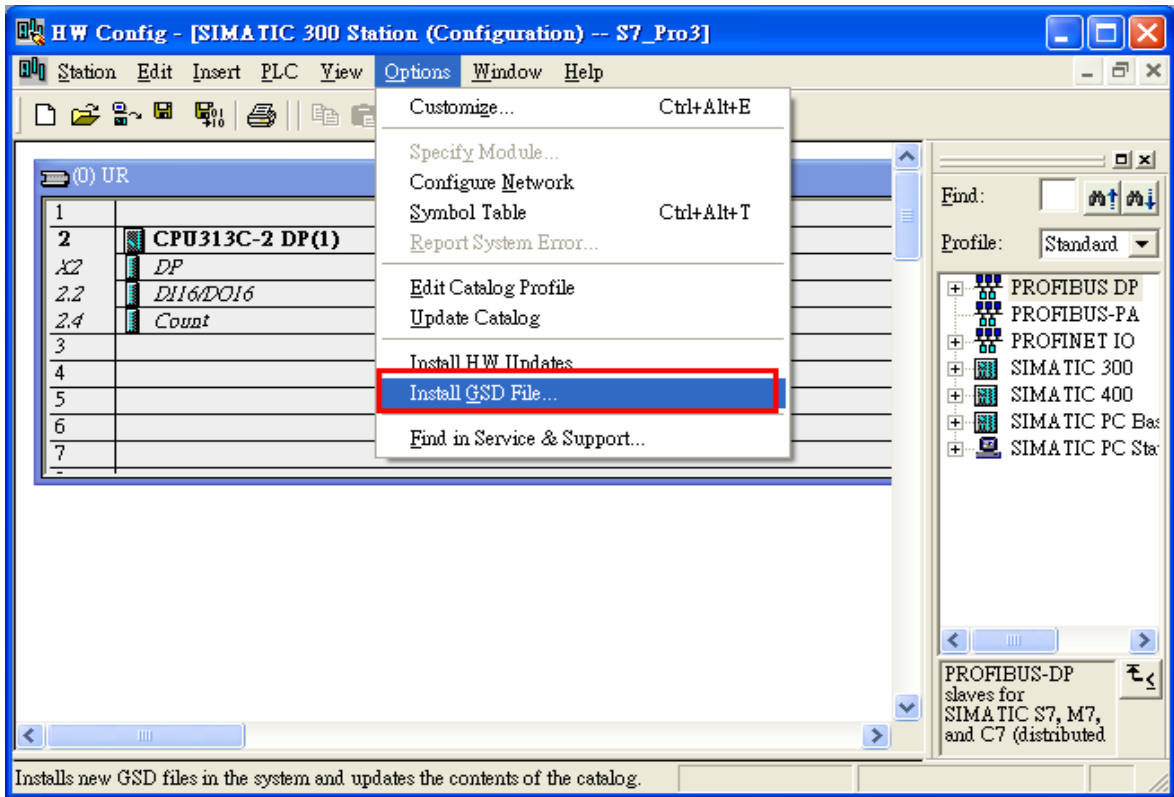
4. Double click "Hardware" to open "HW Config"



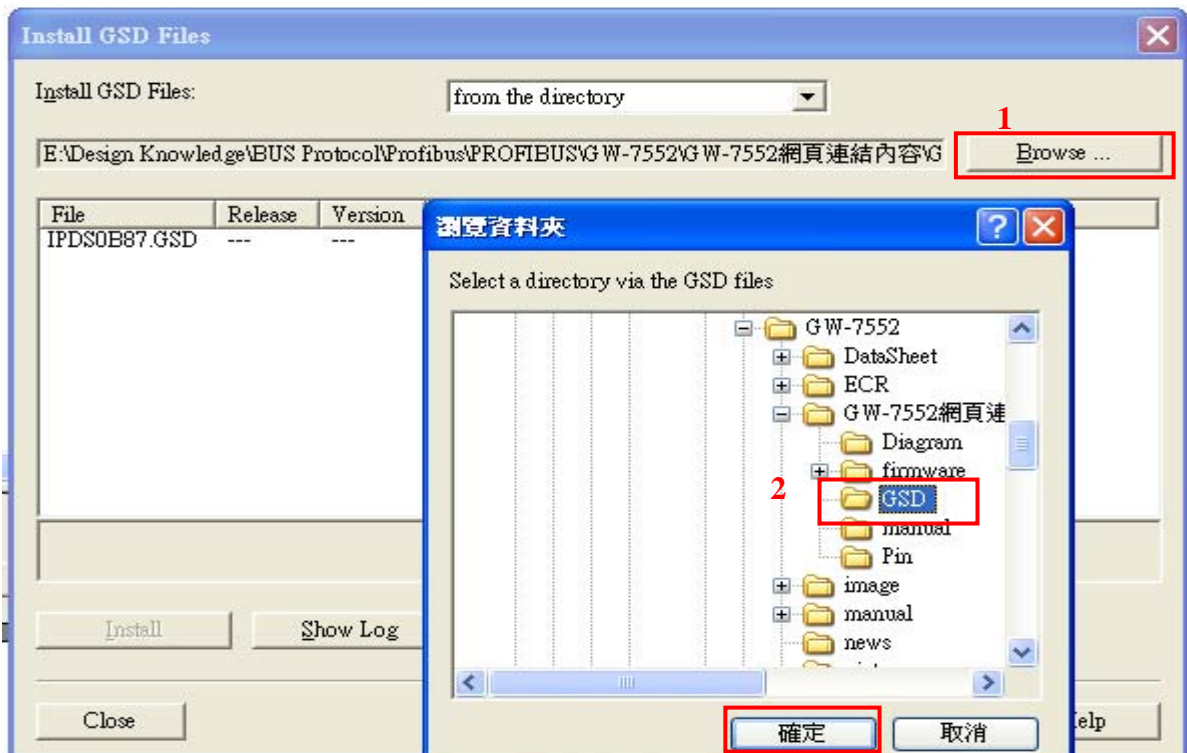
5. Install GW-7552 GSD File

ftp://ftp.icpdas.com/pub/cd/fieldbus_cd/profibus/gateway/gw-7552/

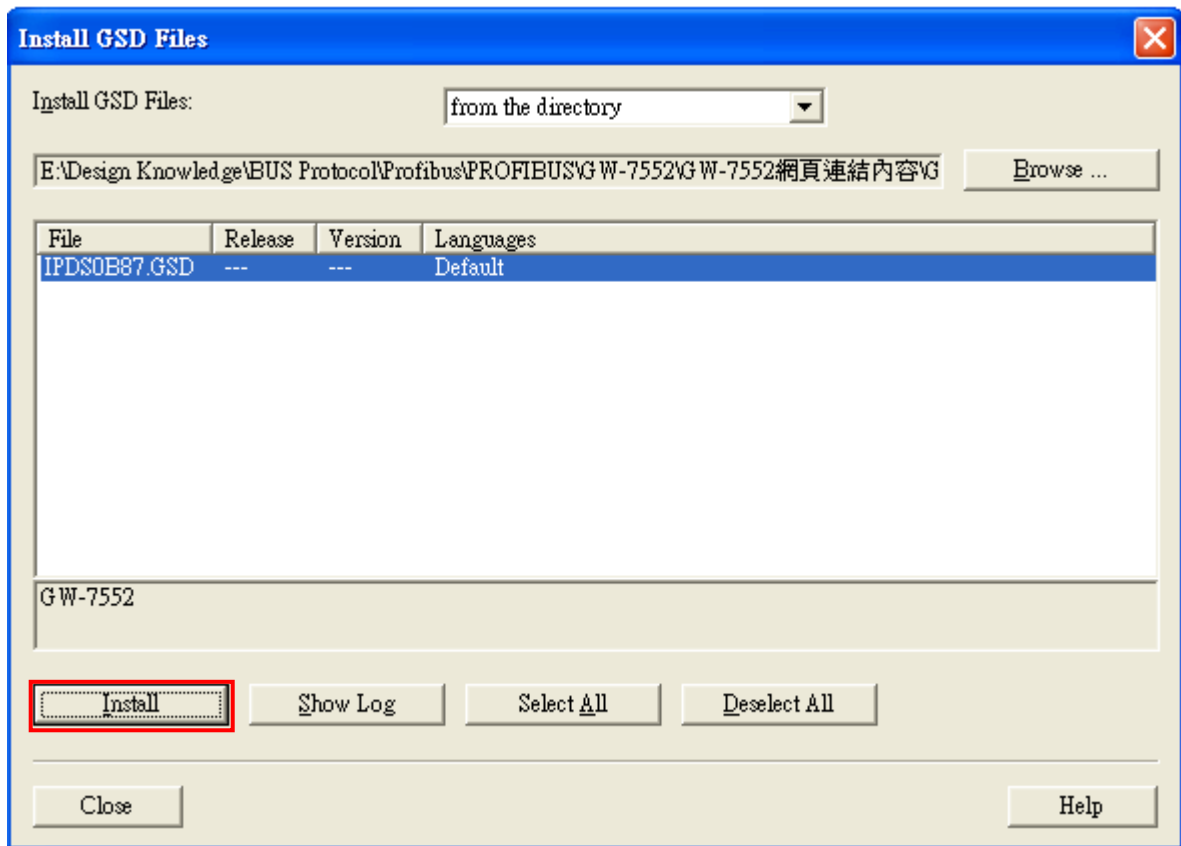
a. Click “Install GSD File”



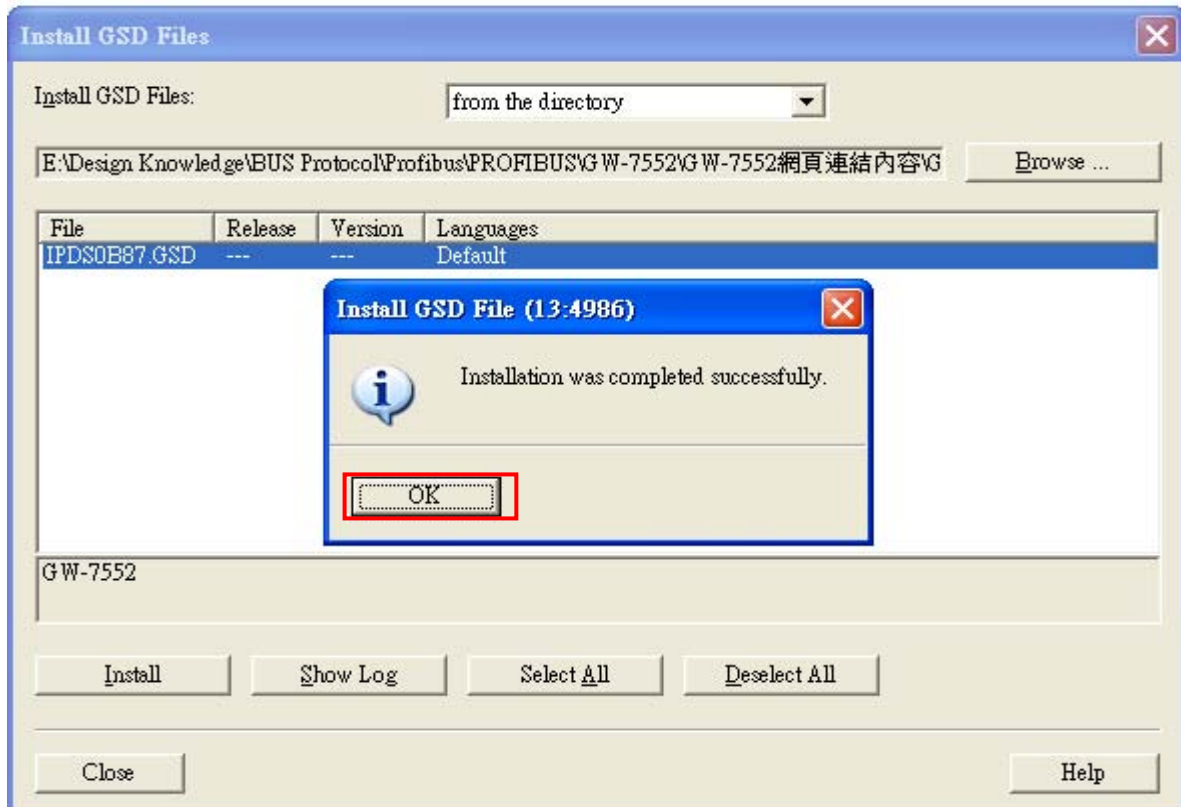
b. Select the directory of GW-7552's GSD file(IPDS0B87.gsd) and click “OK”



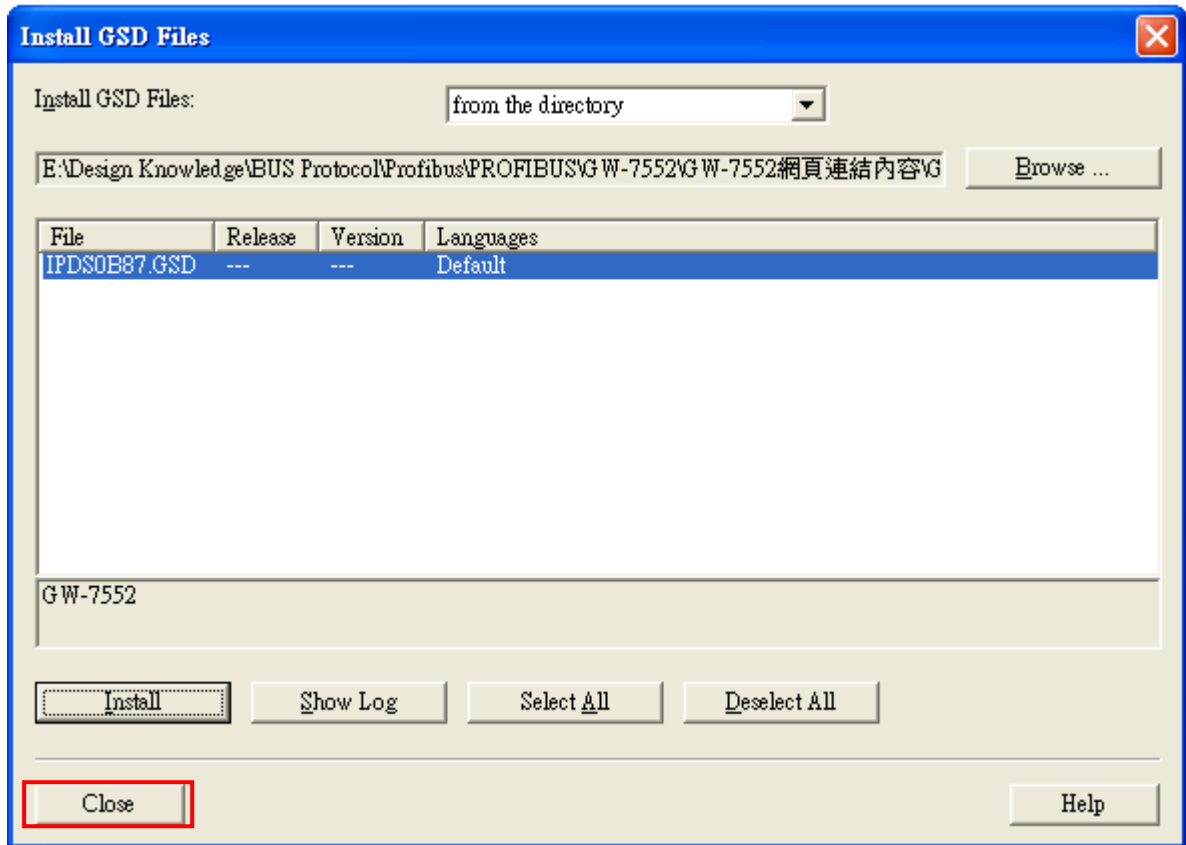
c. Click “Install”



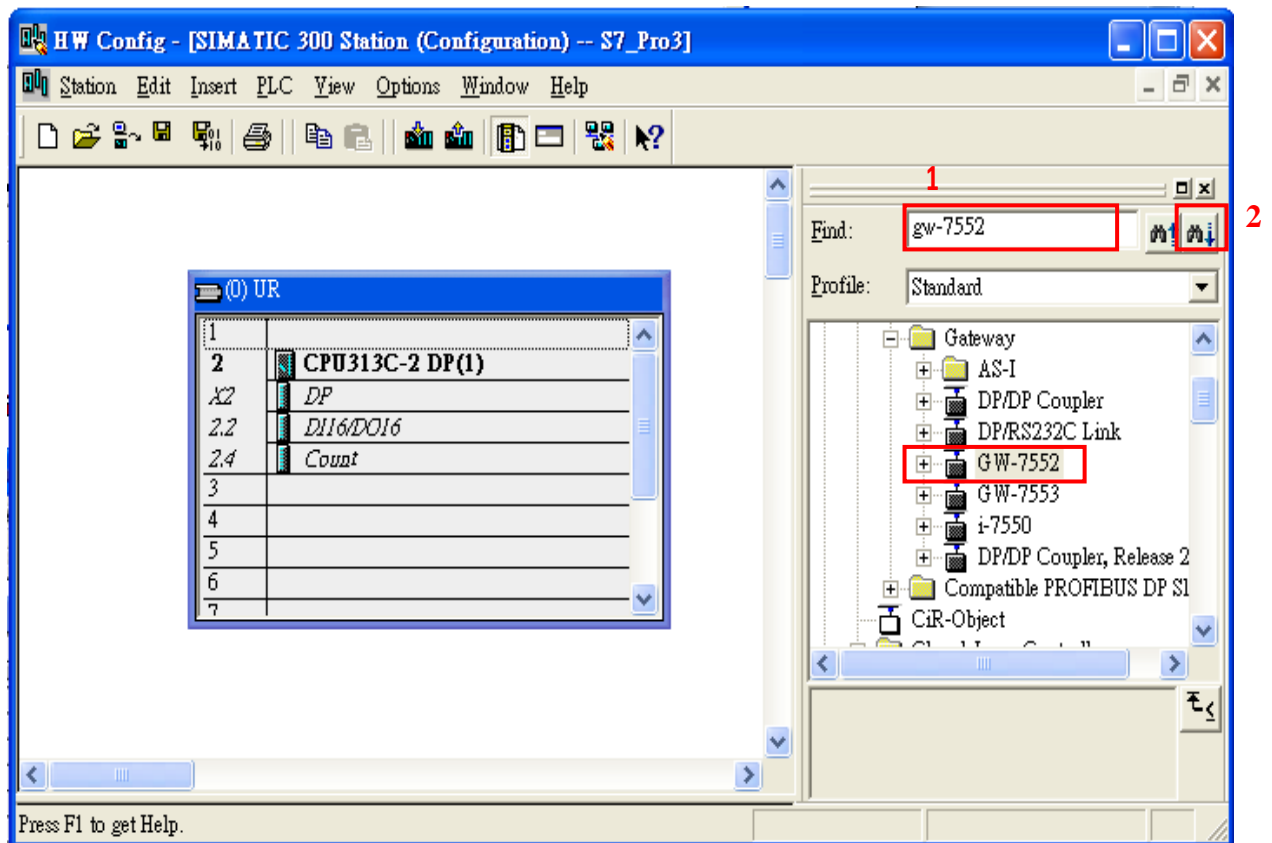
d. Click “OK”



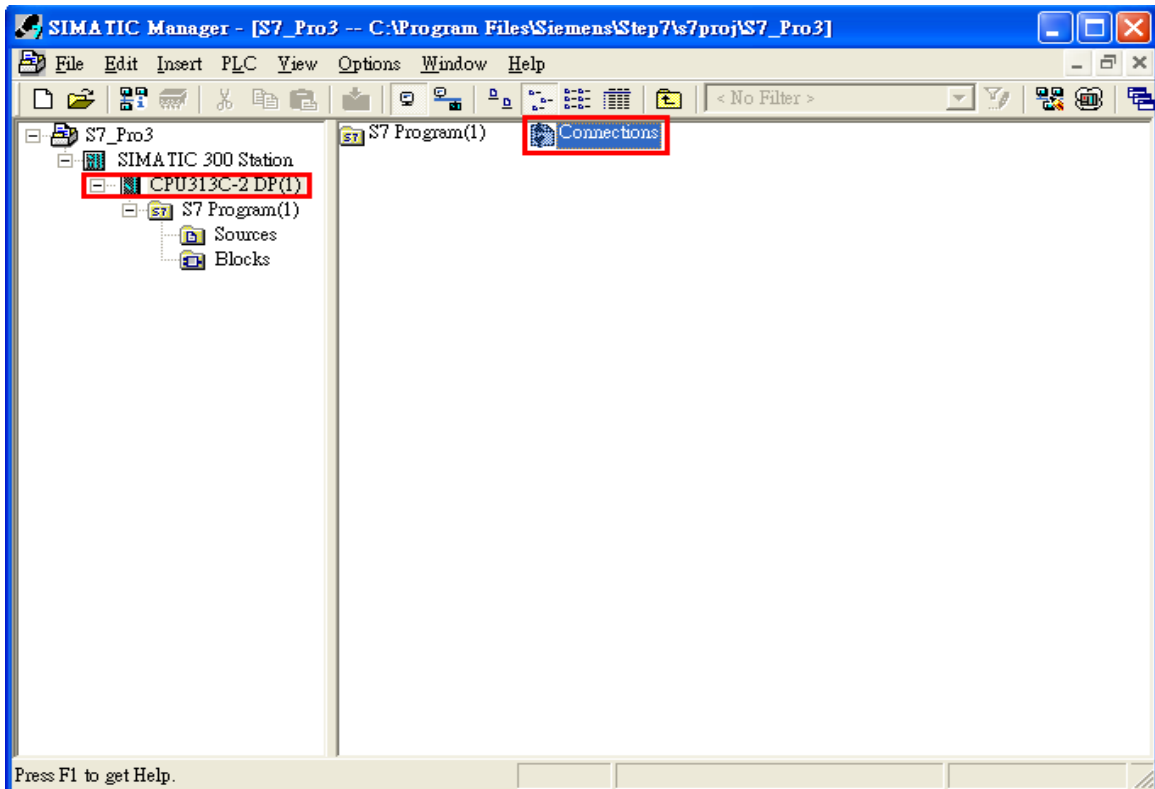
e. Click “Close”



f. Confirm GW-7552's GSD file is available

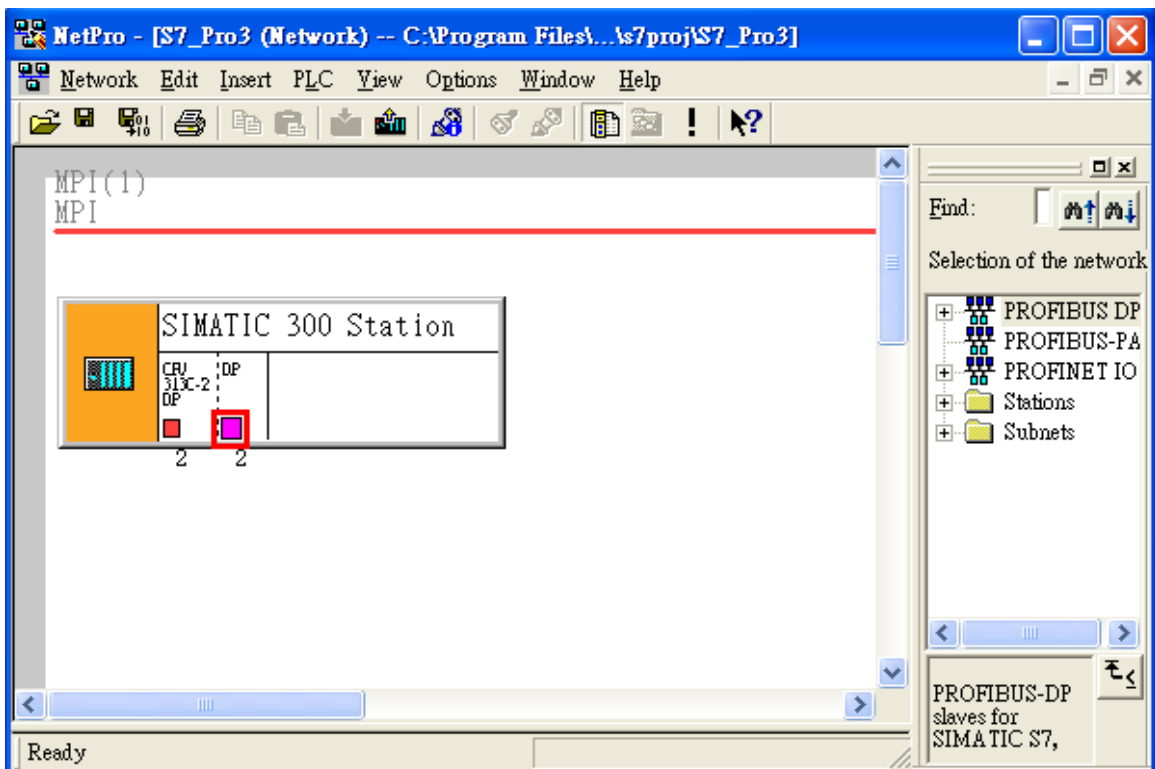


6. Double click “Connections” to open “NetPro”

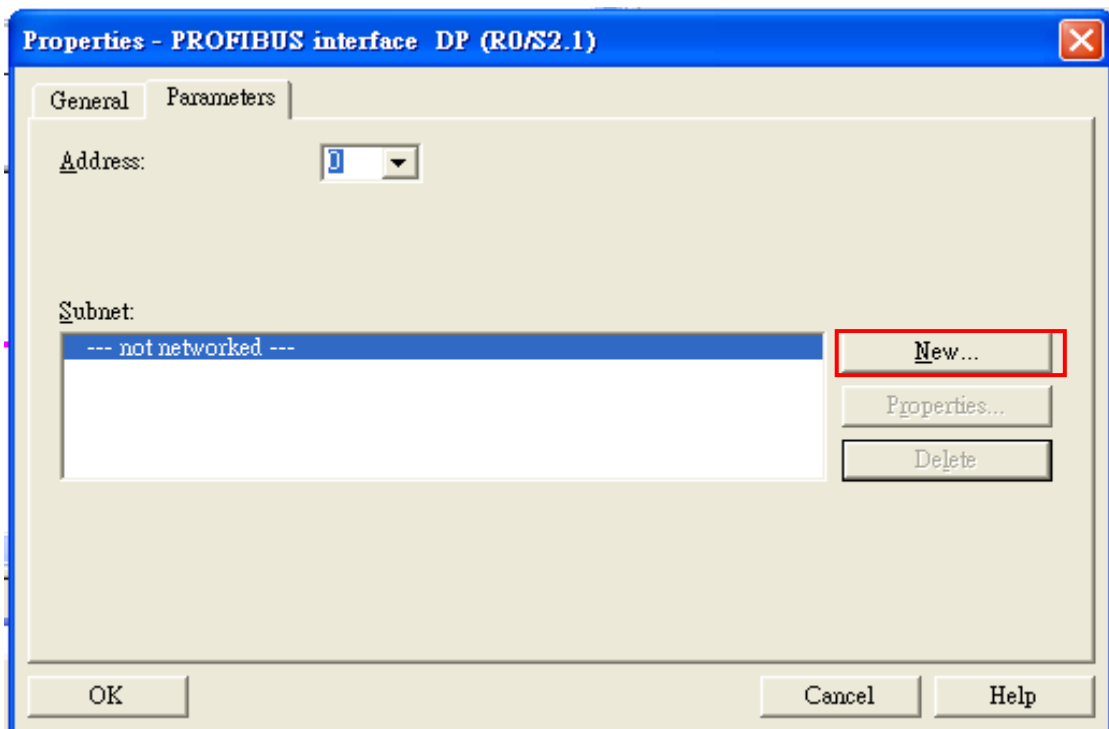


7. Add PROFIBUS subnet

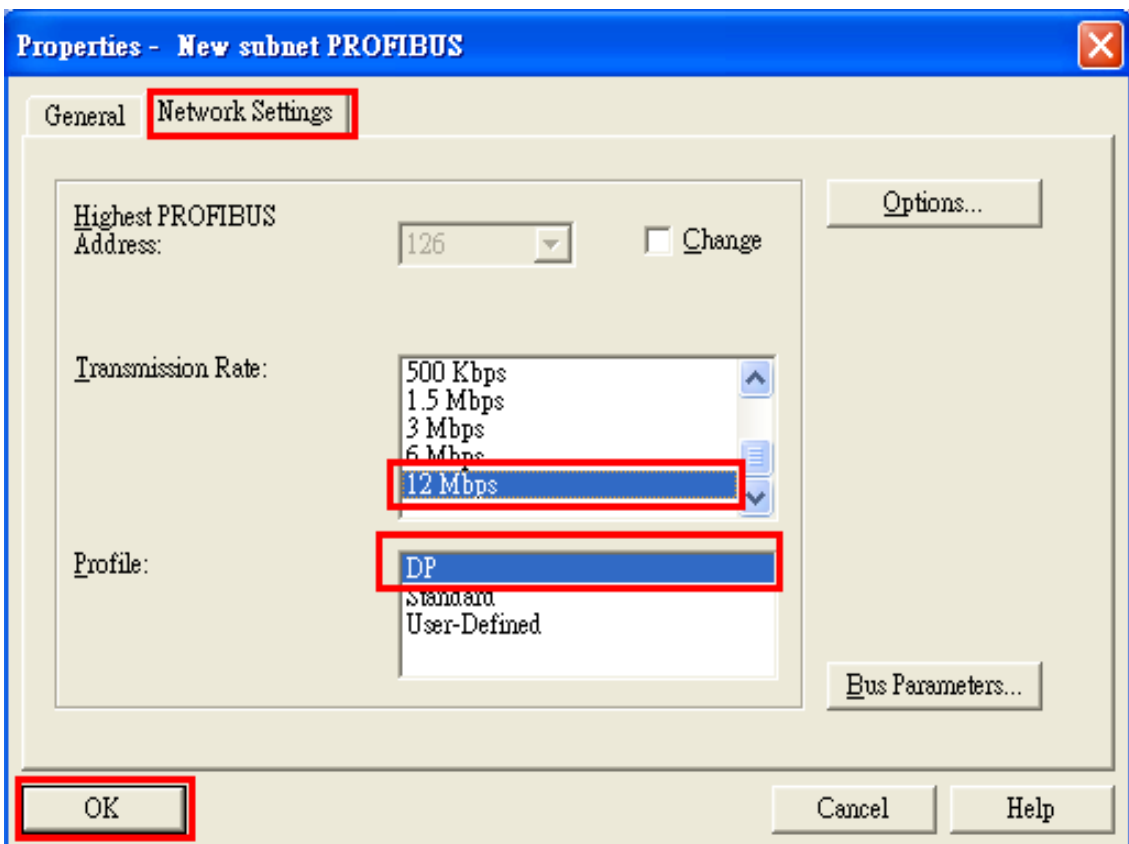
a. Double click the block of the DP



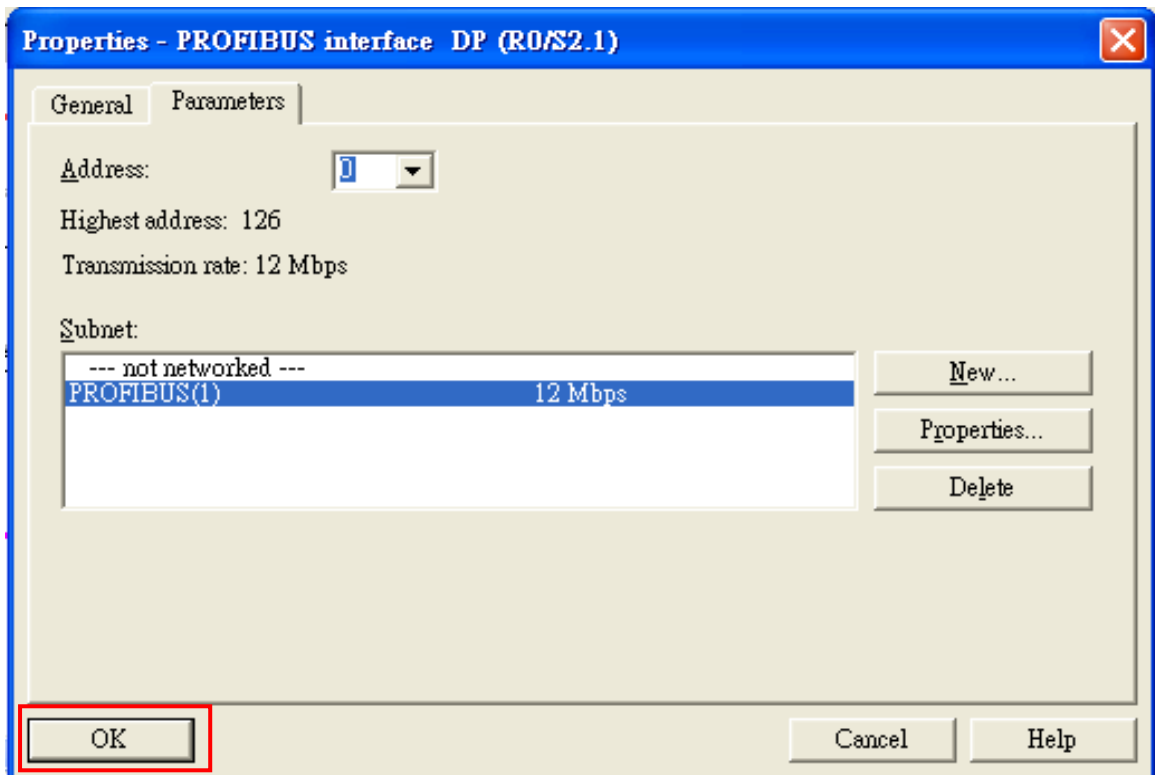
b. Set mater station's address as '0' then click "New"



c. Select PROFIBUS Transmission Rate=12Mbps, Profile=DP and click"OK"

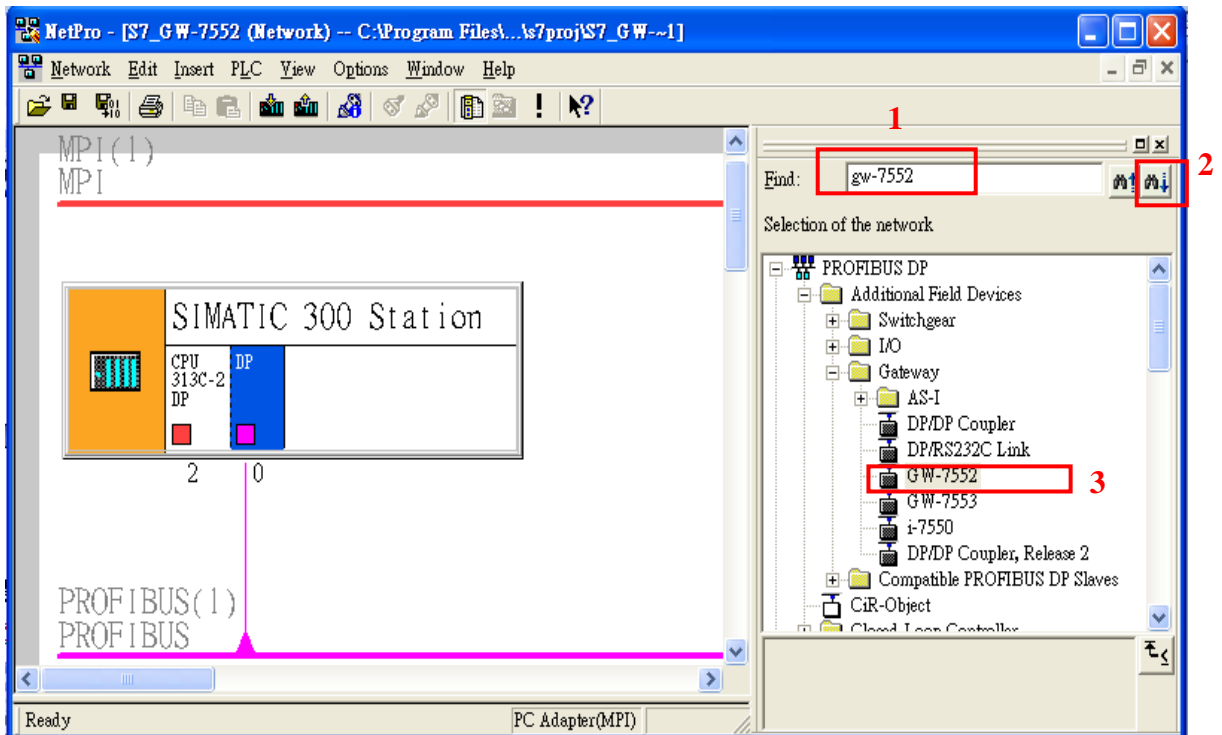


d. Click "OK"

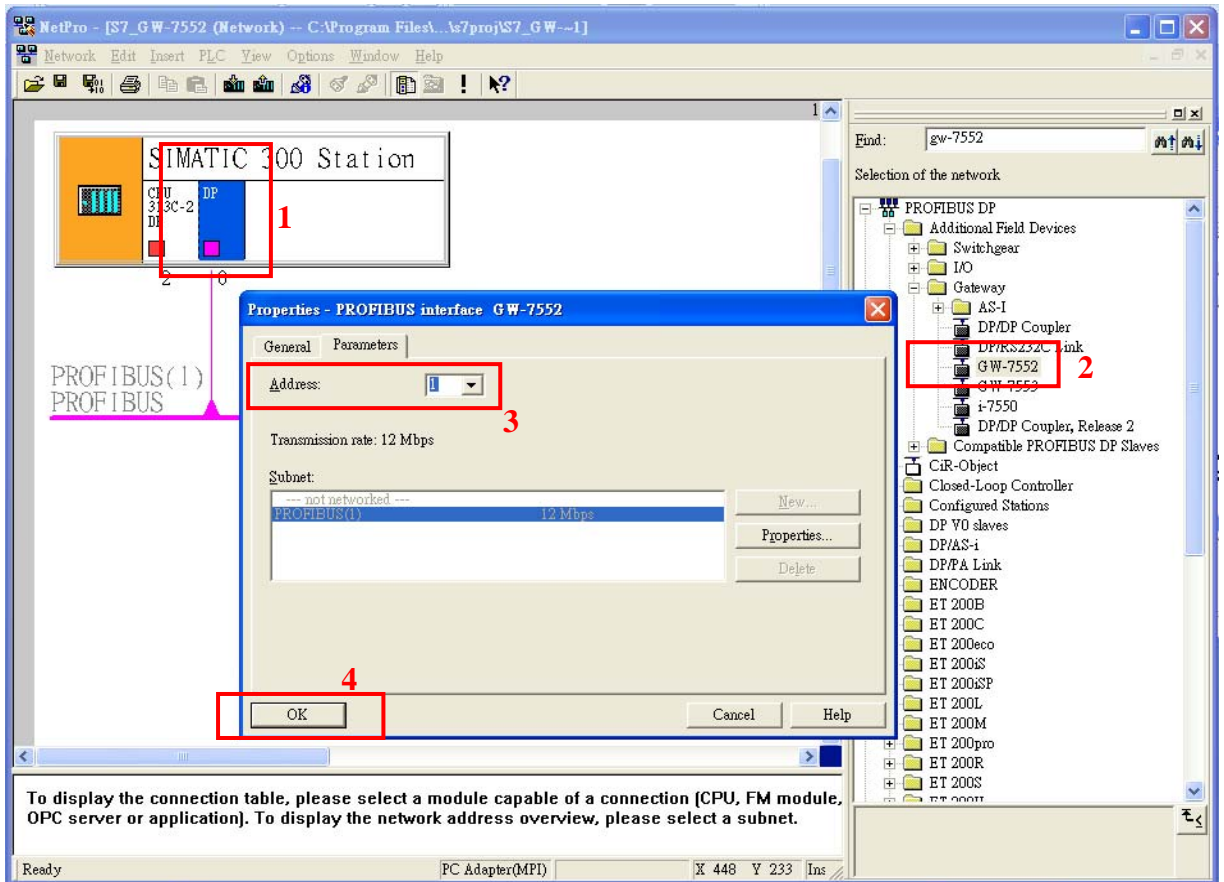


8. Add GW-7552

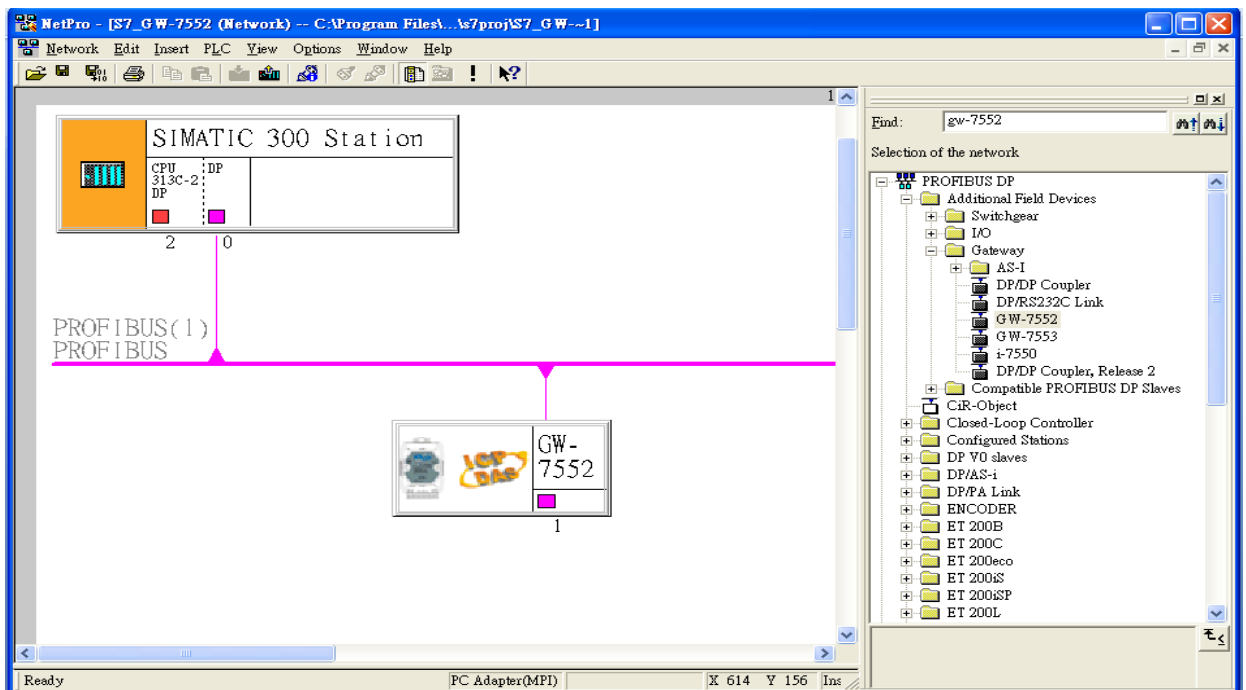
a. Search GW-7552 module



- b. Select DP module and double click GW-7552's icon then set GW-7552's address in the "Properties" dialog (this address must be the same with dip switch of the GW-7552 module and default is "1") then click "OK"

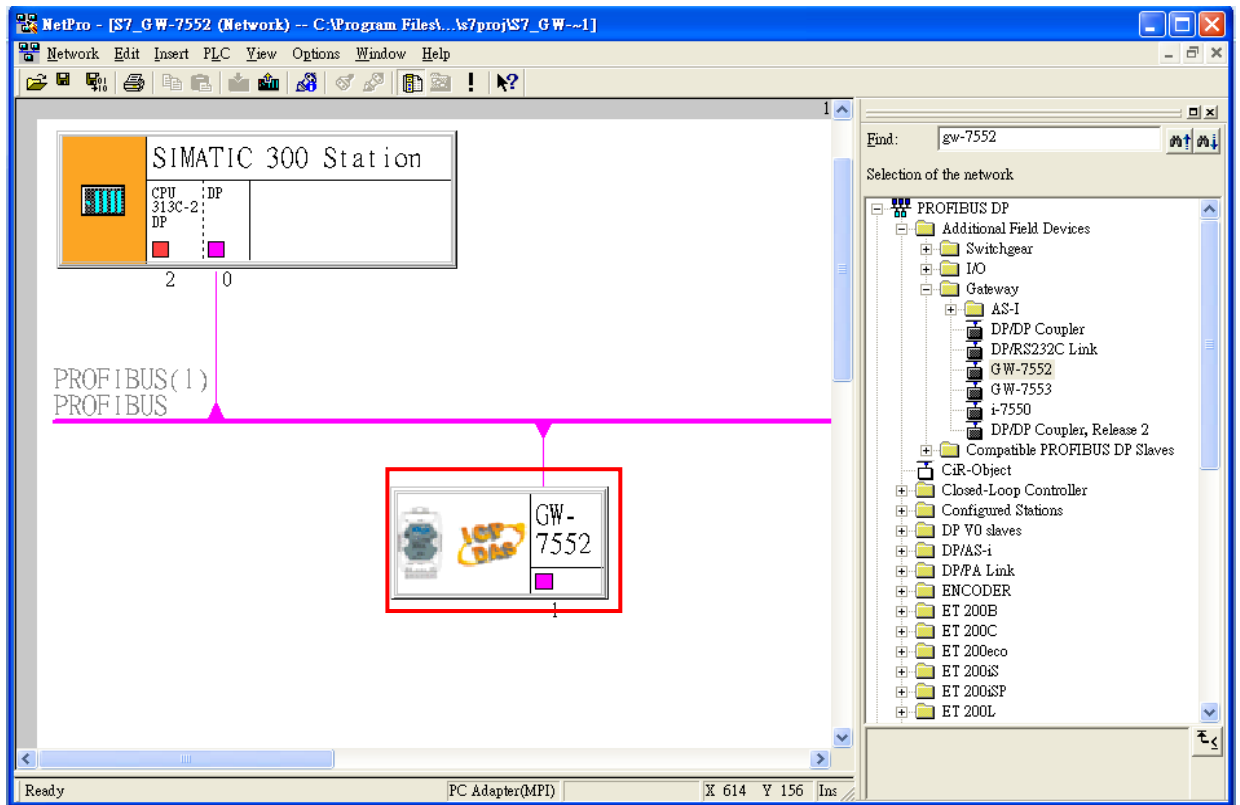


- c. GW-7552 add completely

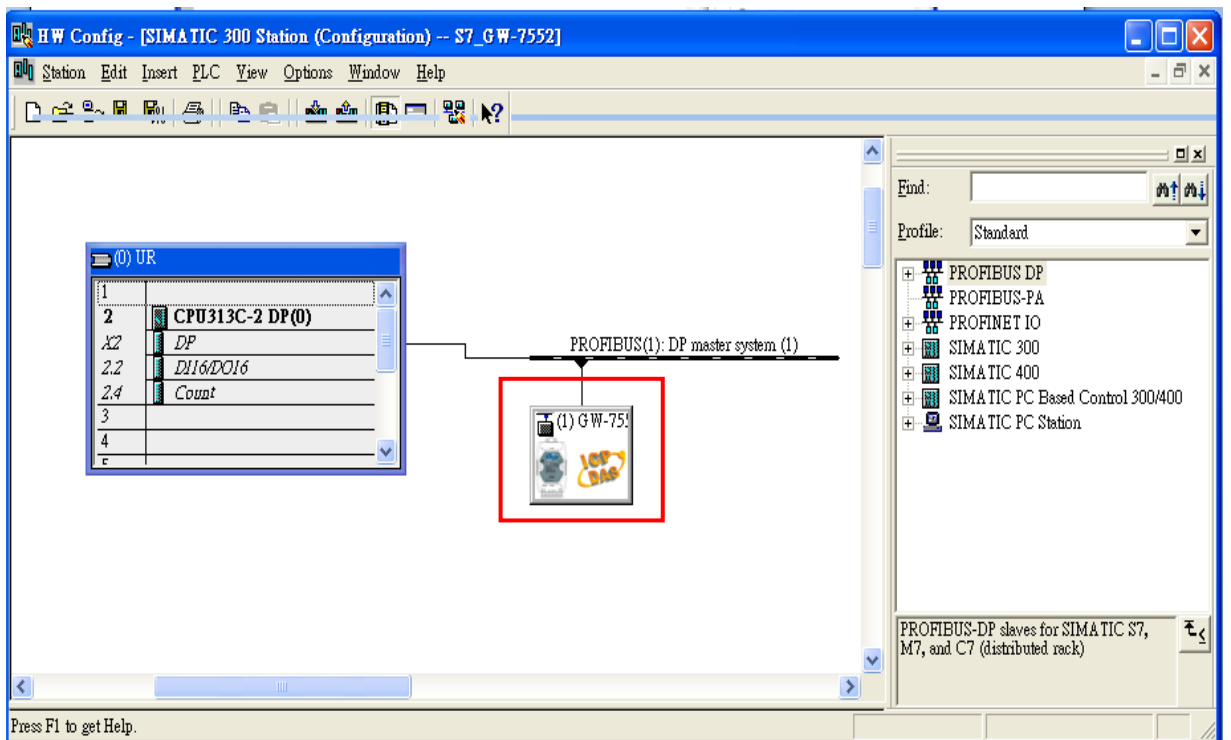


9. Setup the parameter of GW-7552

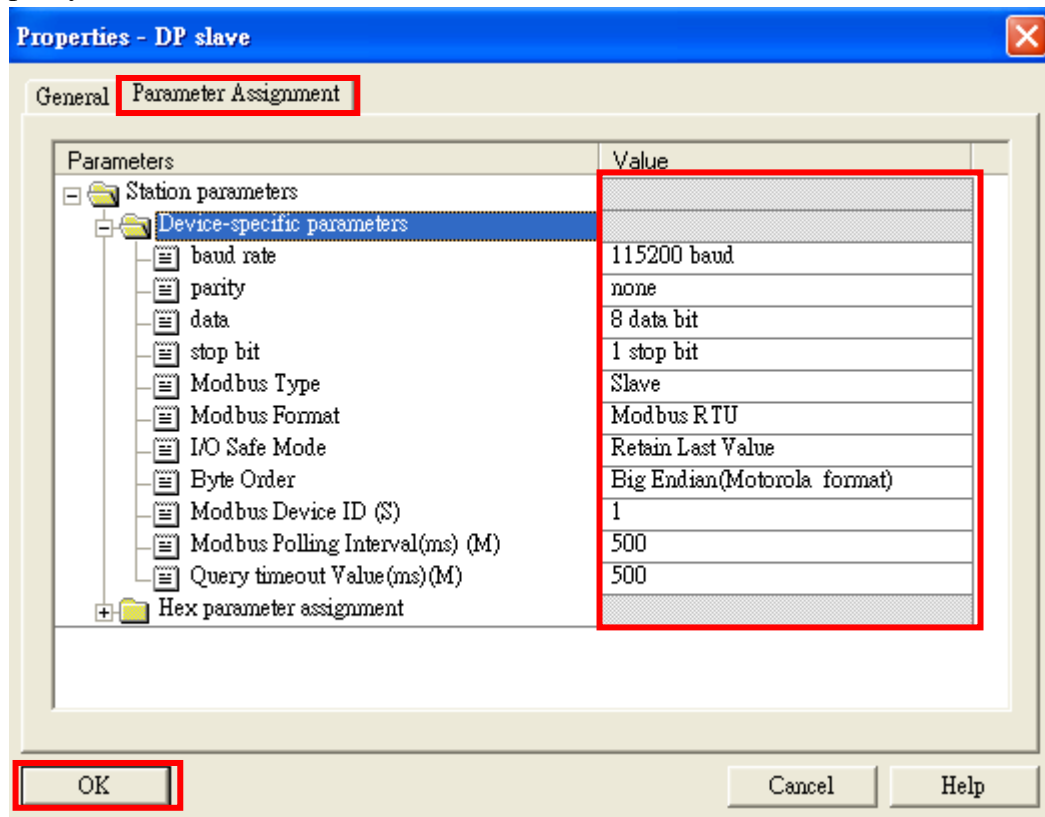
a. Double click GW-7552's icon to open "HW Config"



b. Double click GW-7552's icon to open "Properties" dialog

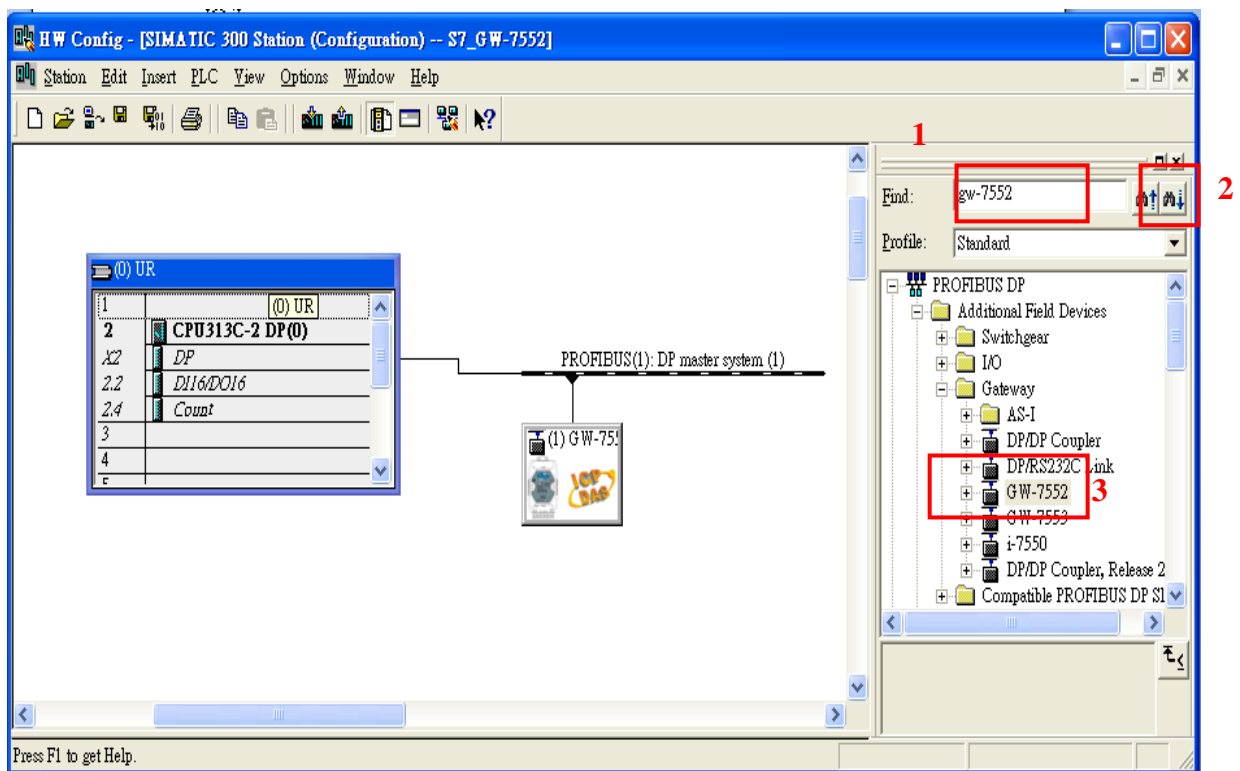


c. Select “Device-specific parameters” folder and configure the settings (ex: baud rate, parity, data bit) and click ”OK”.

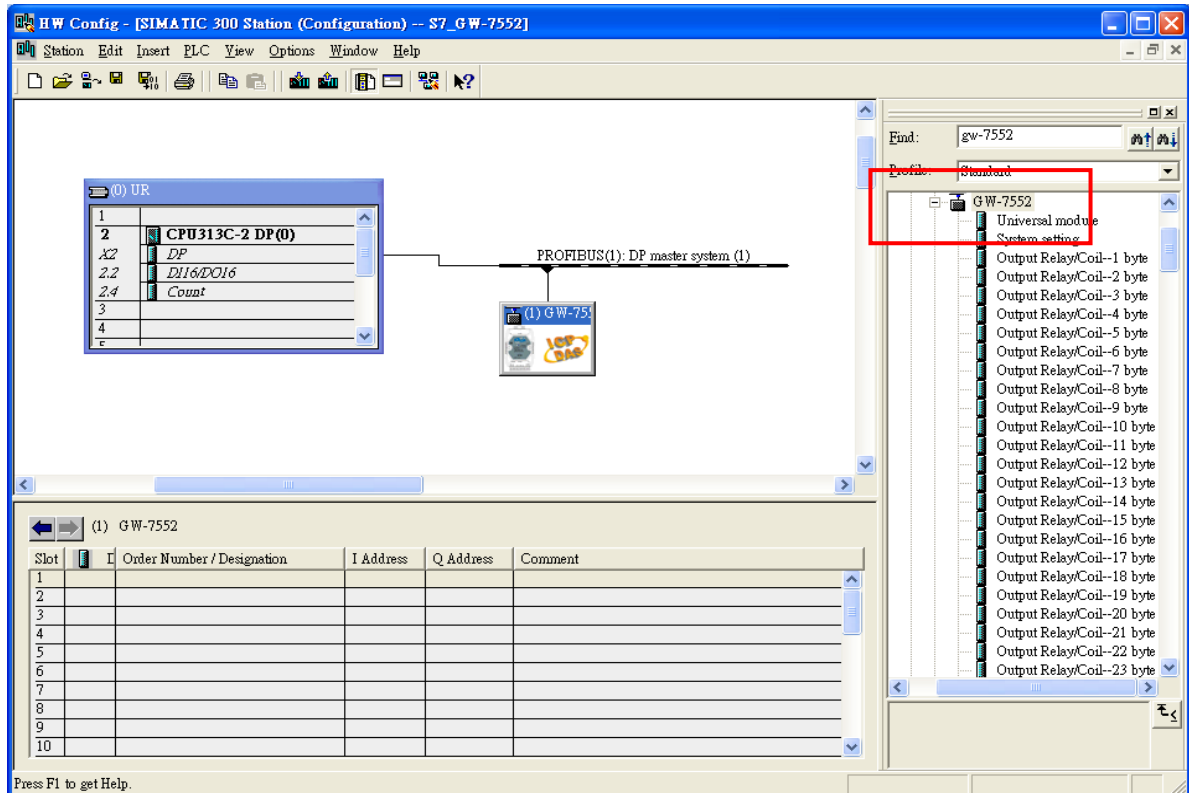


10.GW-7552 module configuration

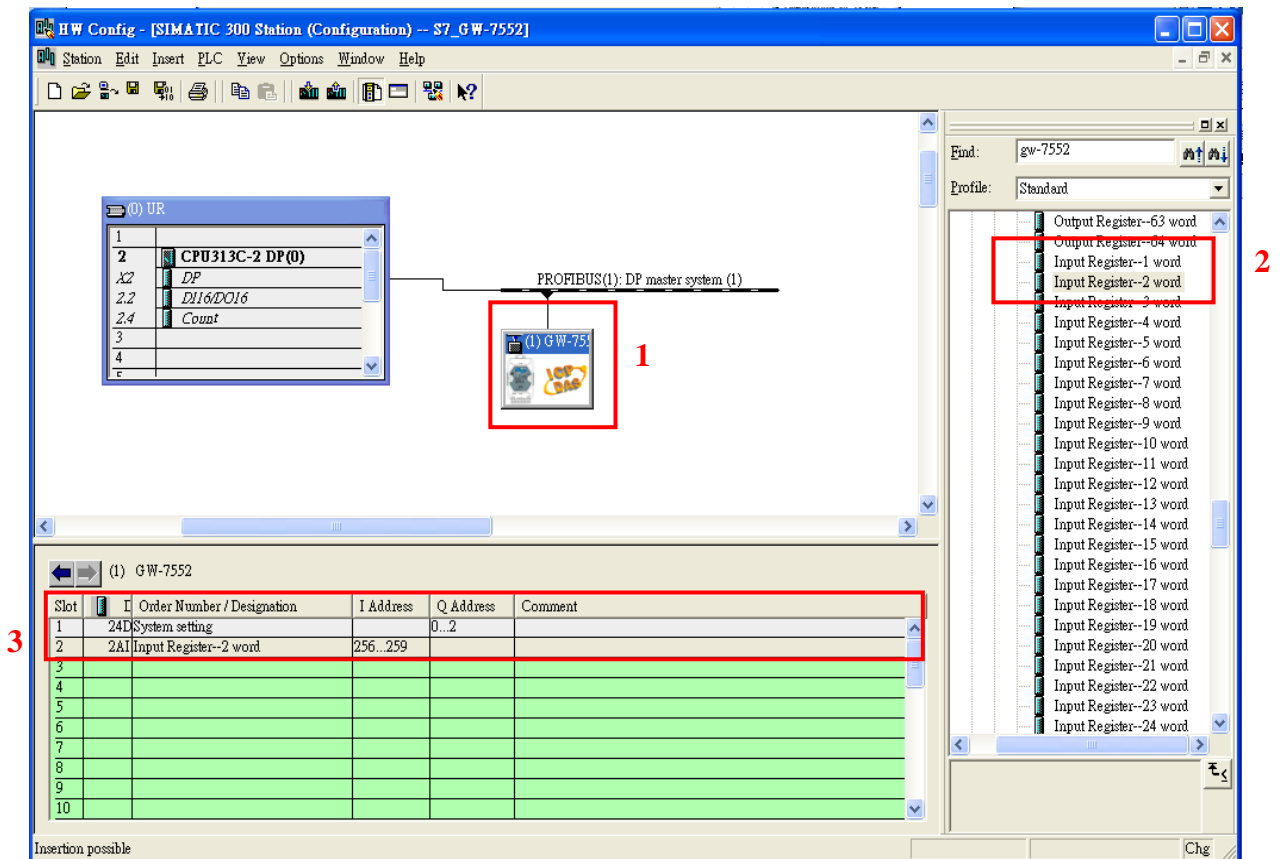
a. Search for GW-7552 module



b. Open GW-7552's folder



c. Click GW-7552 module and double click “System setting module” and select the IO modules that you need (ex: 2AI , 2word)



11. You have completed GW-7552's configuration and you just need to download the configuration to Siemens PLC ◦

The screenshot shows the 'HW Config' window for a SIMATIC 300 station. The 'PLC' menu is open, displaying the following options:

- Download... (Ctrl+L)
- Upload...
- Download Module Identification...
- Upload Module Identification to PG...
- Faulty Modules...
- Module Information... (Ctrl+D)
- Operating Mode... (Ctrl+I)
- Clear/Reset...
- Set Time of Day...
- Monitor/Modify
- Update Firmware...
- Save Device Name to Memory Card...
- Ethernet
- PROFIBUS
- Save Service Data...

The hardware rack is shown with the following modules:

Slot	D...	Order Number / Designation	I Address	Q Address	Comment
1	24DO	System setting		0...2	
2	2AI	Input Register--2 word	256...259		
3					
4					
5					
6					
7					
8					
9					

The right-hand pane shows the hardware catalog with the following items selected:

- PROFIBUS DP
- PROFIBUS-PA
- PROFINET IO
- SIMATIC 300
- SIMATIC 400
- SIMATIC PC Based Control 300/400
- SIMATIC PC Station

At the bottom of the window, a status bar indicates: 'Loads the current station into the load memory of the current module.' and a 'Chg' button is visible.