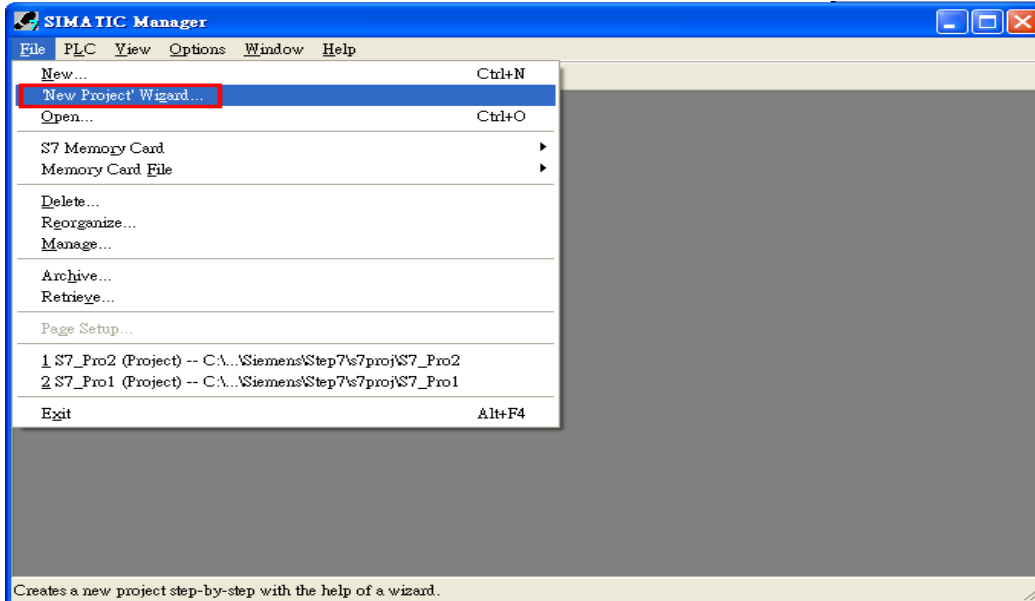


I-7550E and SIMATIC STEP 7 Configurations

1. Double Click “SIMATIC Manager” icon to open “SIMATIC Manager”

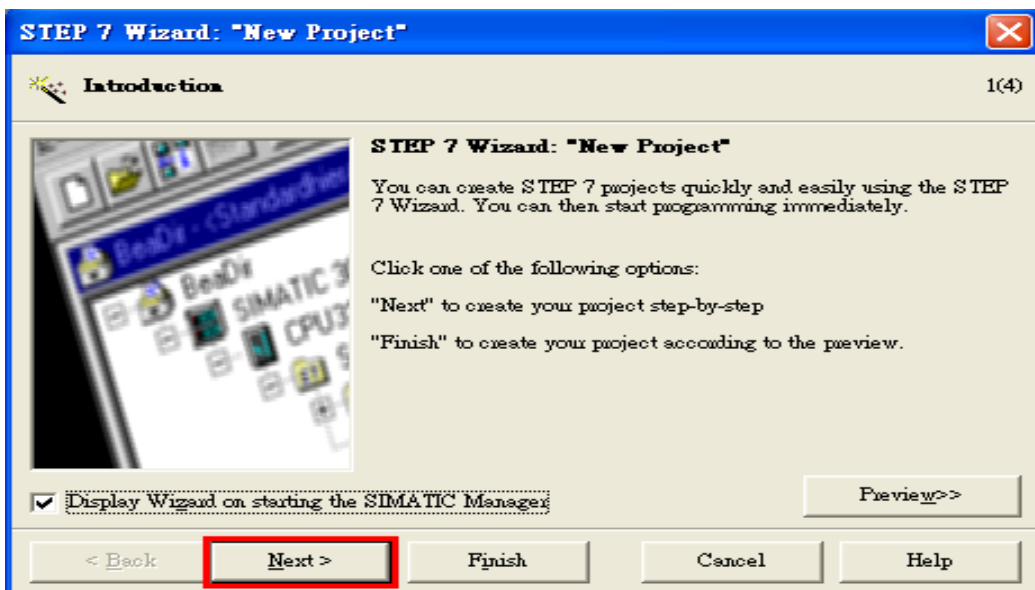


2. Open “New Project Wizard”

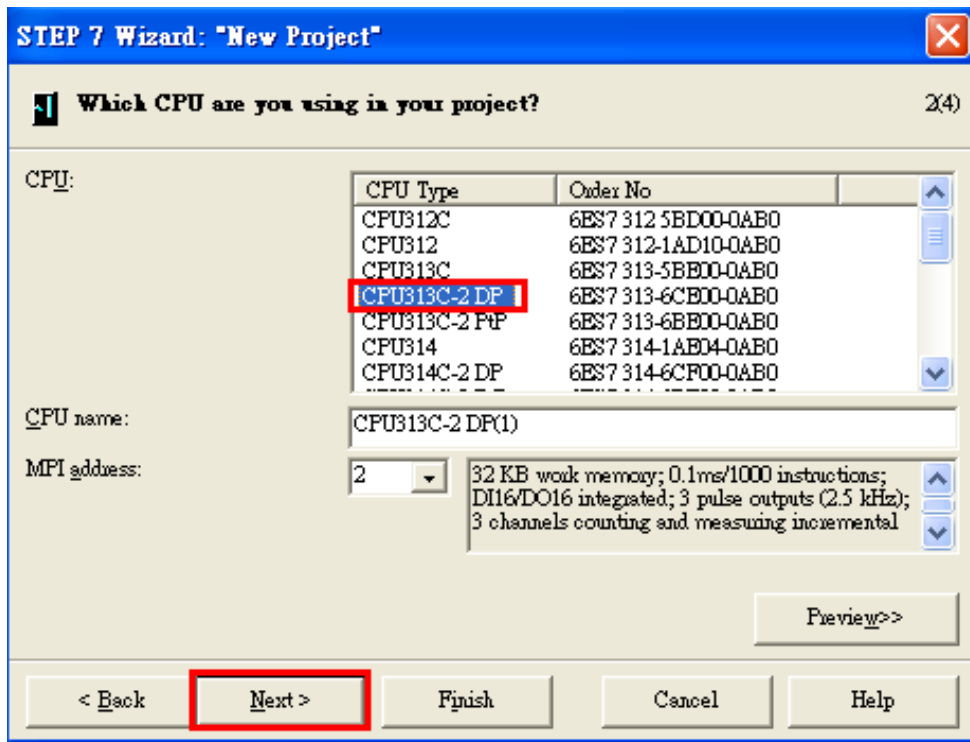


3. Set up Project

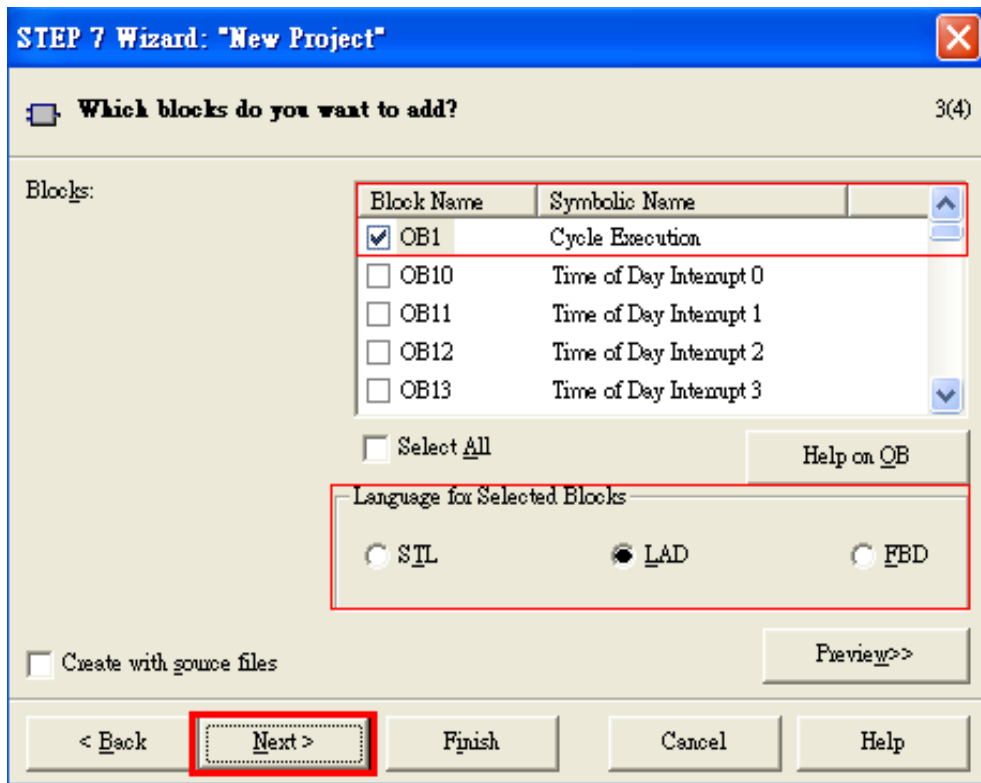
- a. Click”Next”



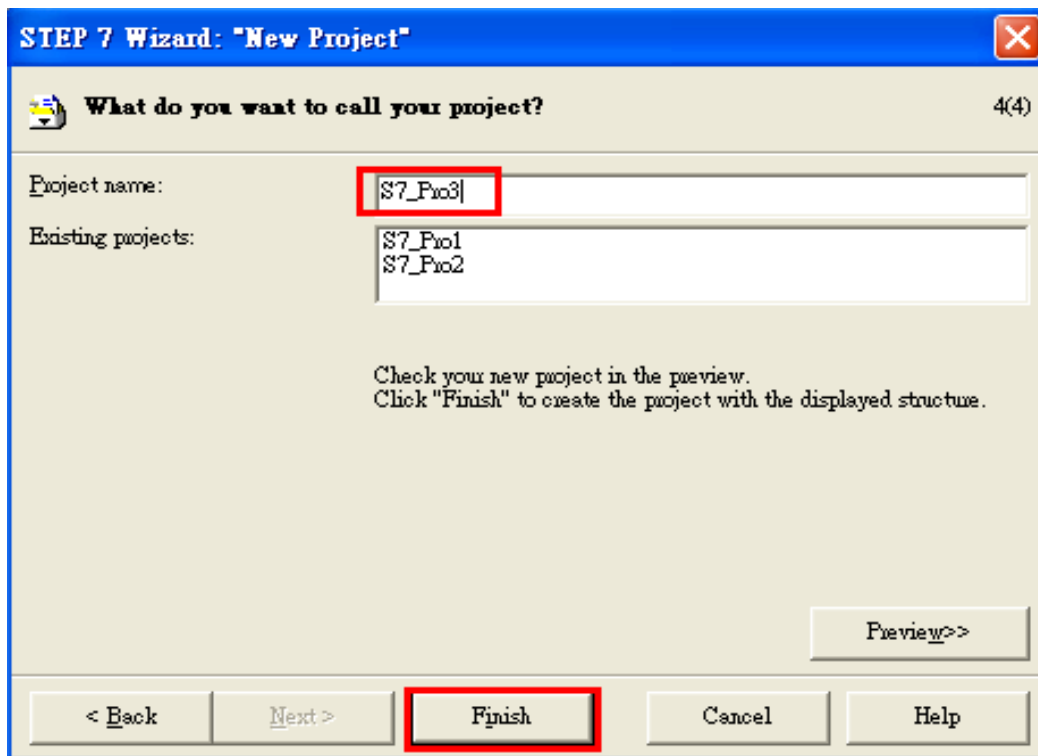
b. Select CPU type then click "Next"



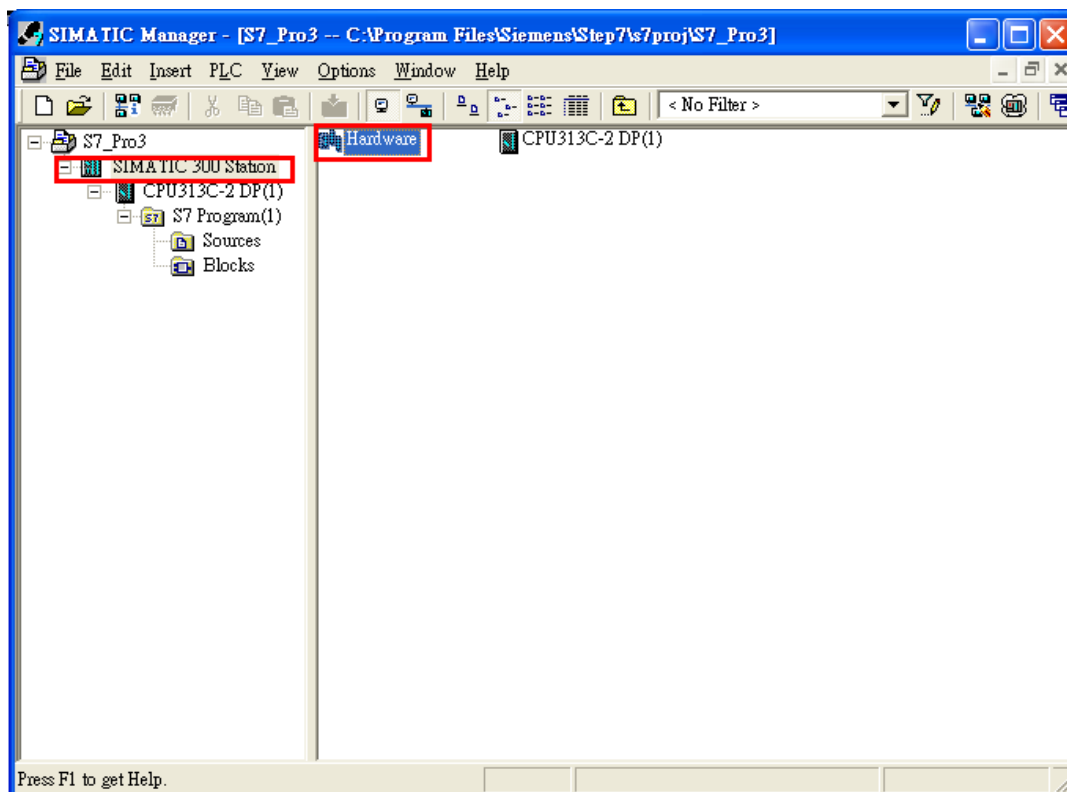
c. Select Blocks and Language for Selected Blocks then click "Next"



d. Set project name then click "Finish"



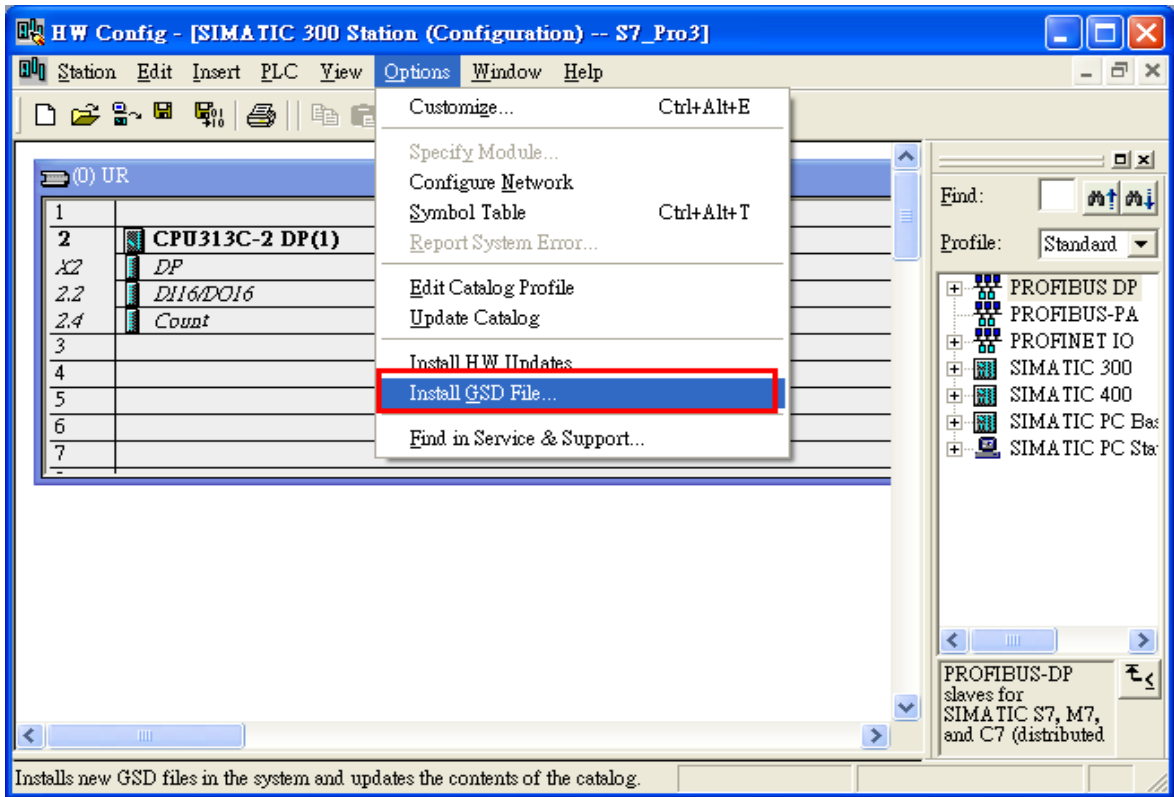
4. Double click "Hardware" to open "HW Config"



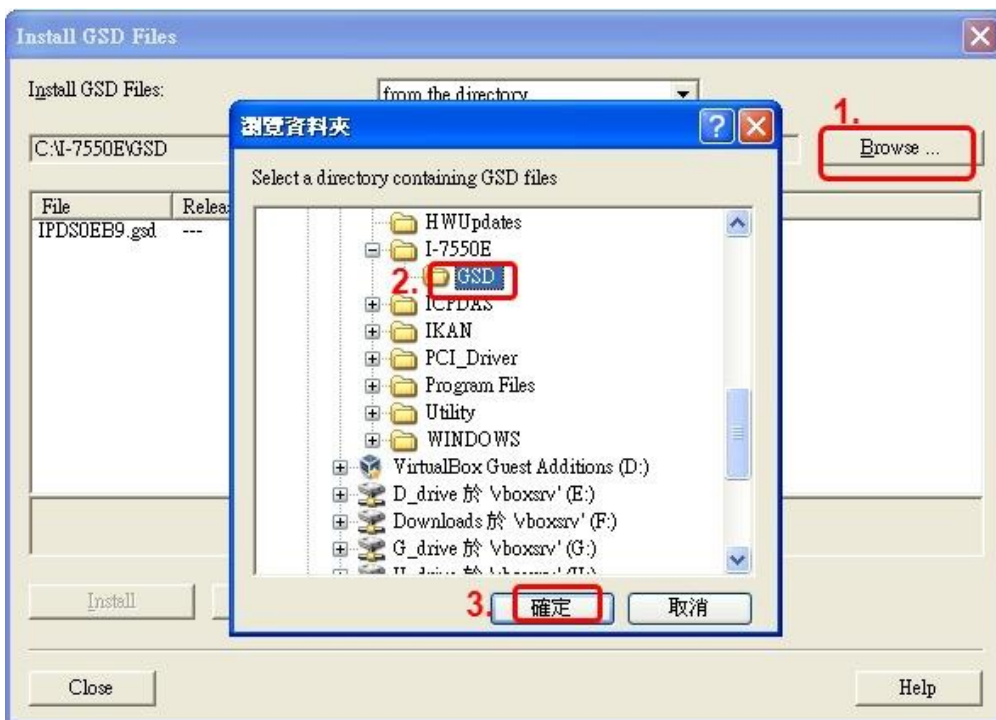
5. Install I-7550E GSD File

http://ftp.icpdas.com/pub/cd/fieldbus_cd/profibus/converter/I-7550E/

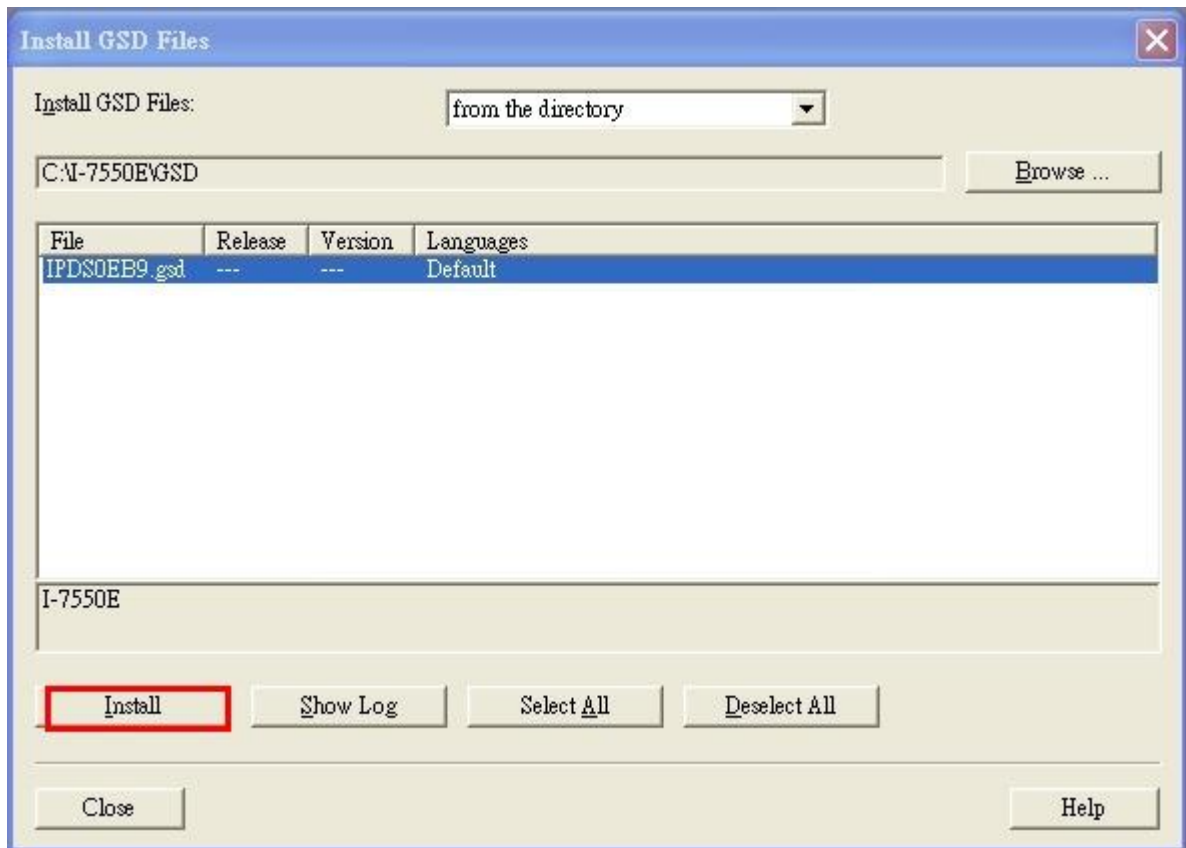
a. Click “Install GSD File”



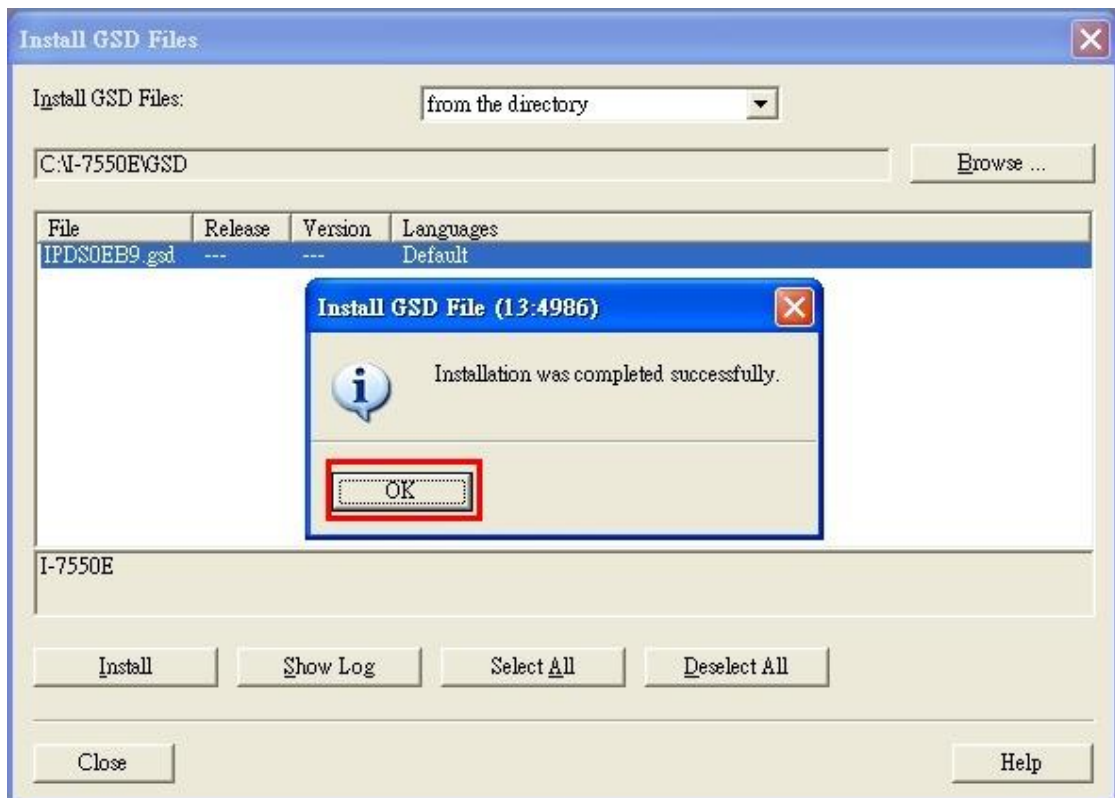
b. Select the directory of I-7550E's GSD file(IPDS0EB9.gsd) and click “OK”



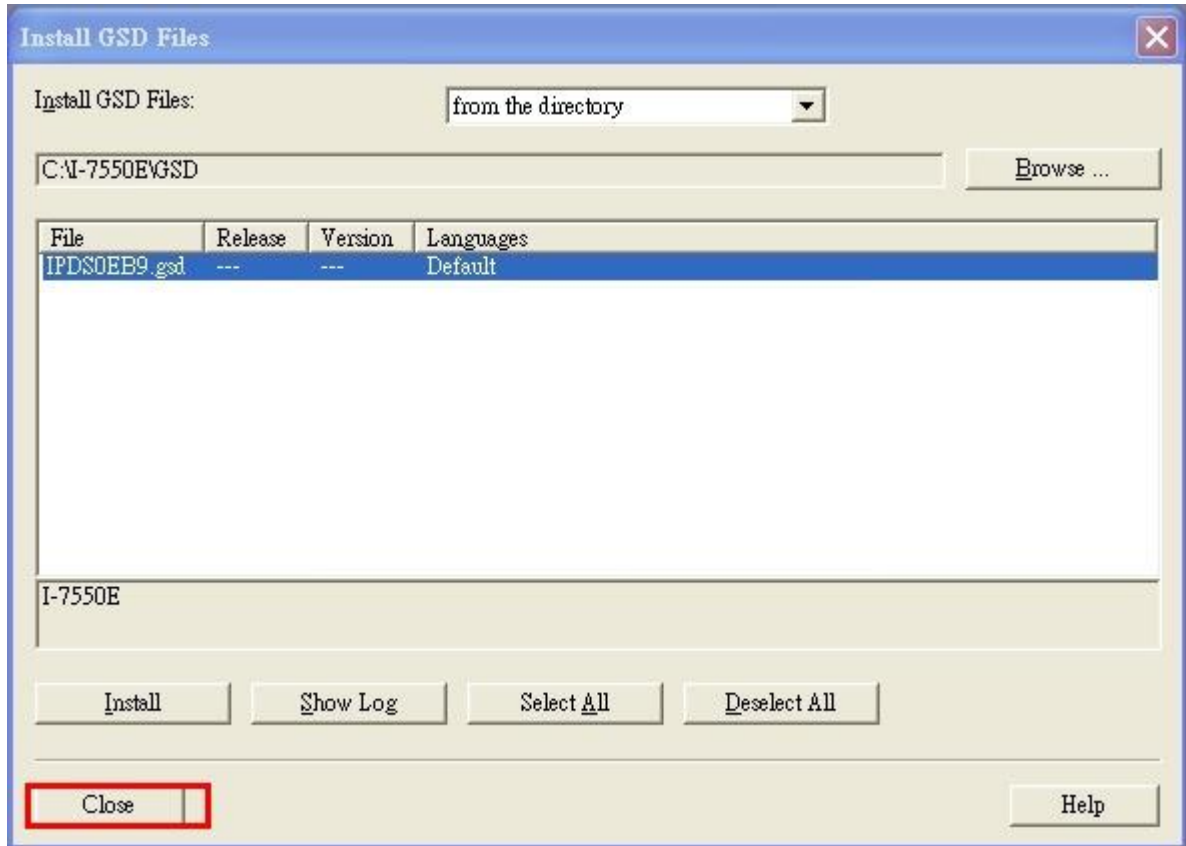
c. Click “Install”



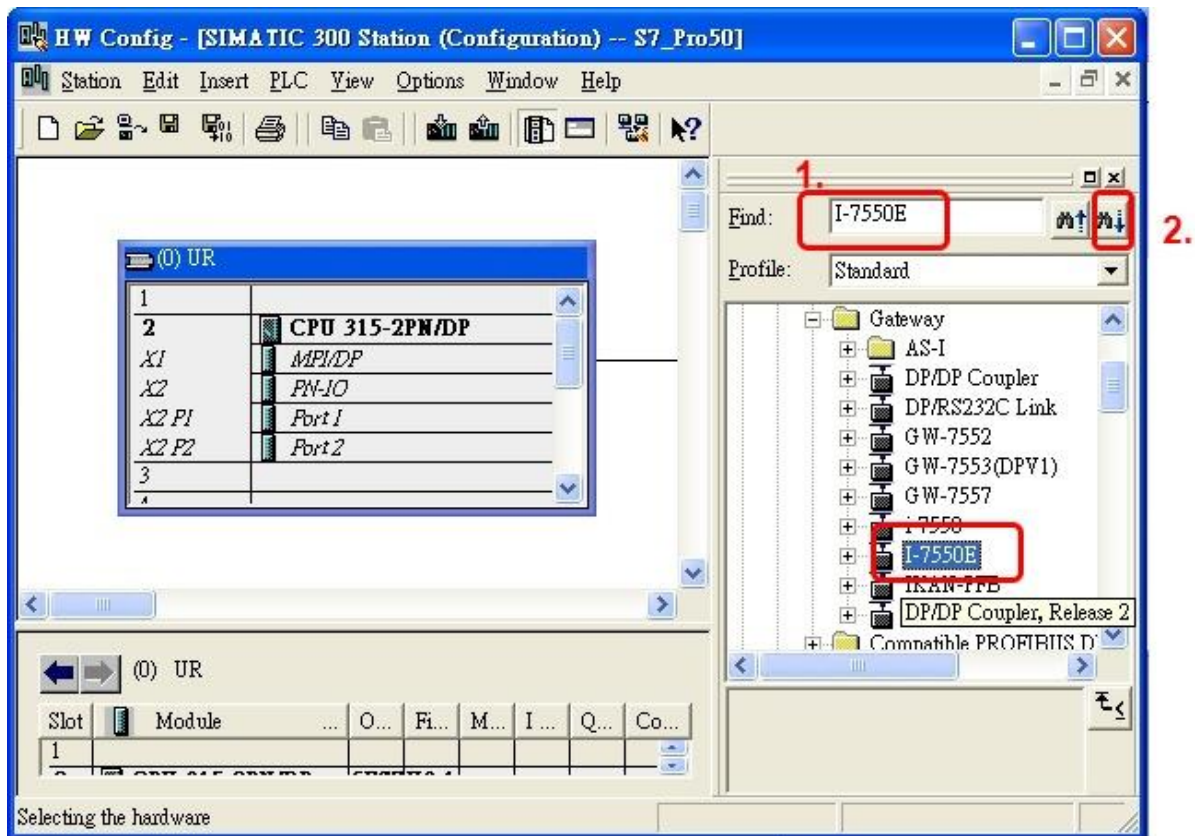
d. Click”OK”



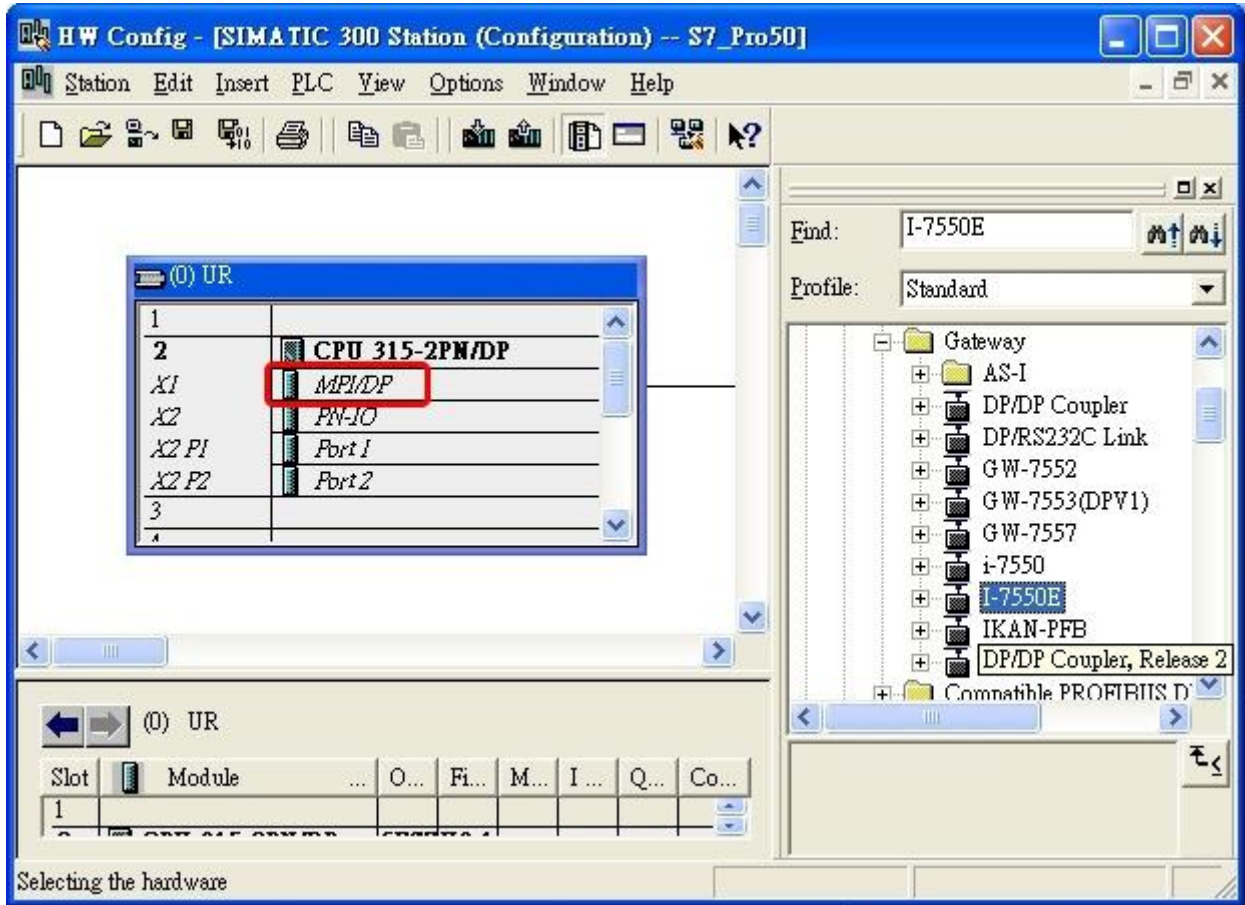
e. Click “Close”



f. Confirm I-7550E's GSD file is available

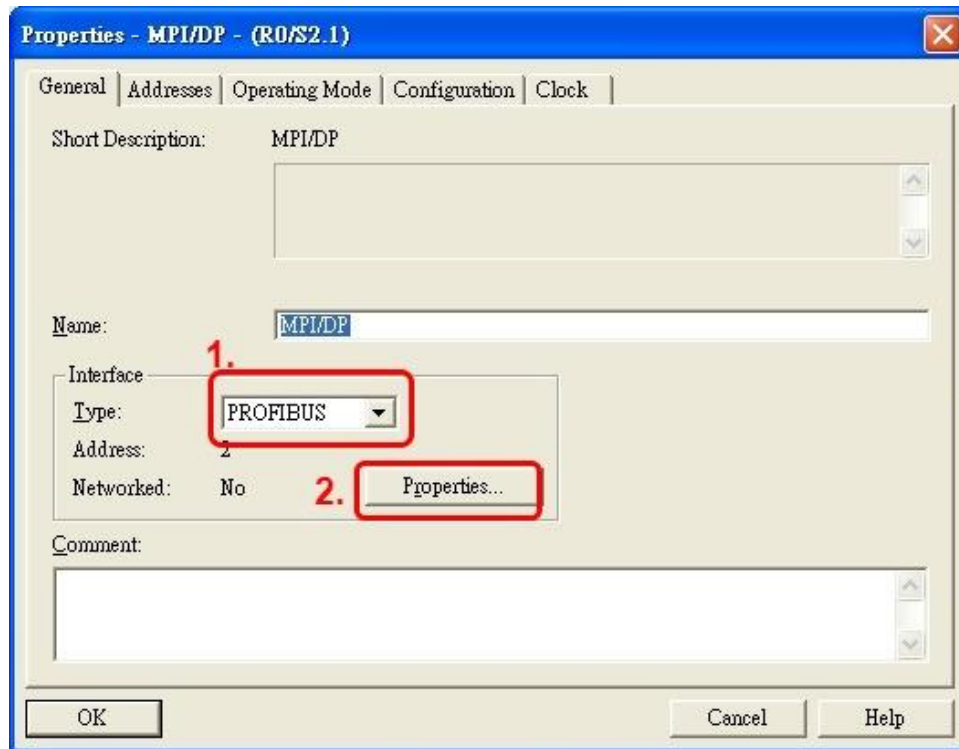


6. Double click PROFIBUS DP port of PLC

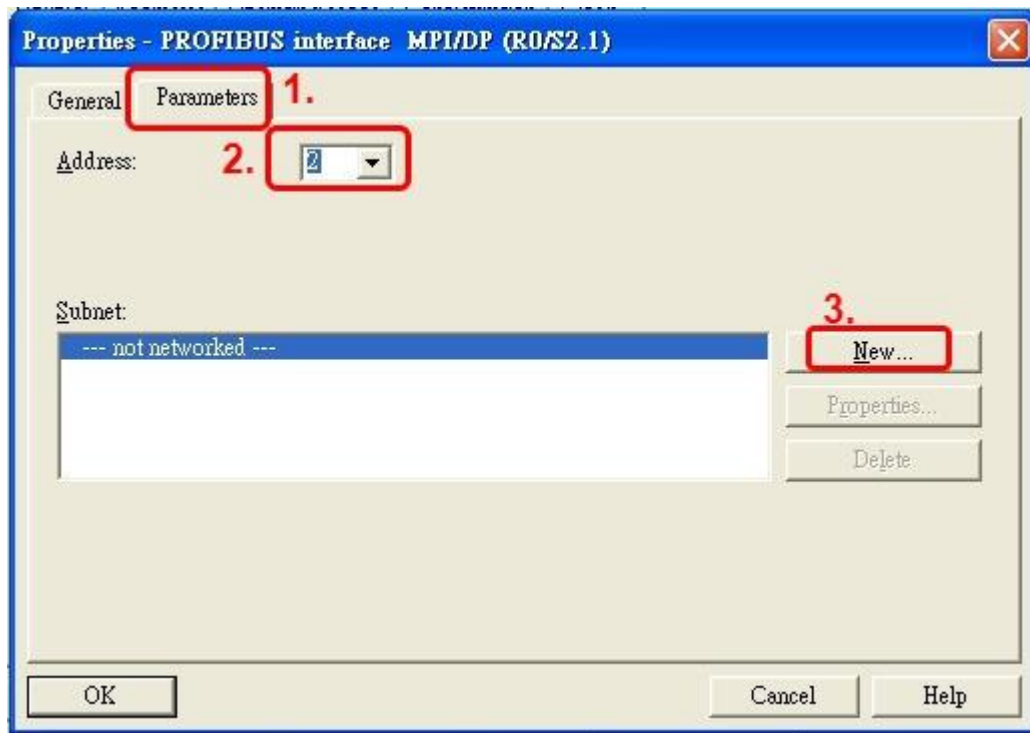


7. Add PROFIBUS subnet

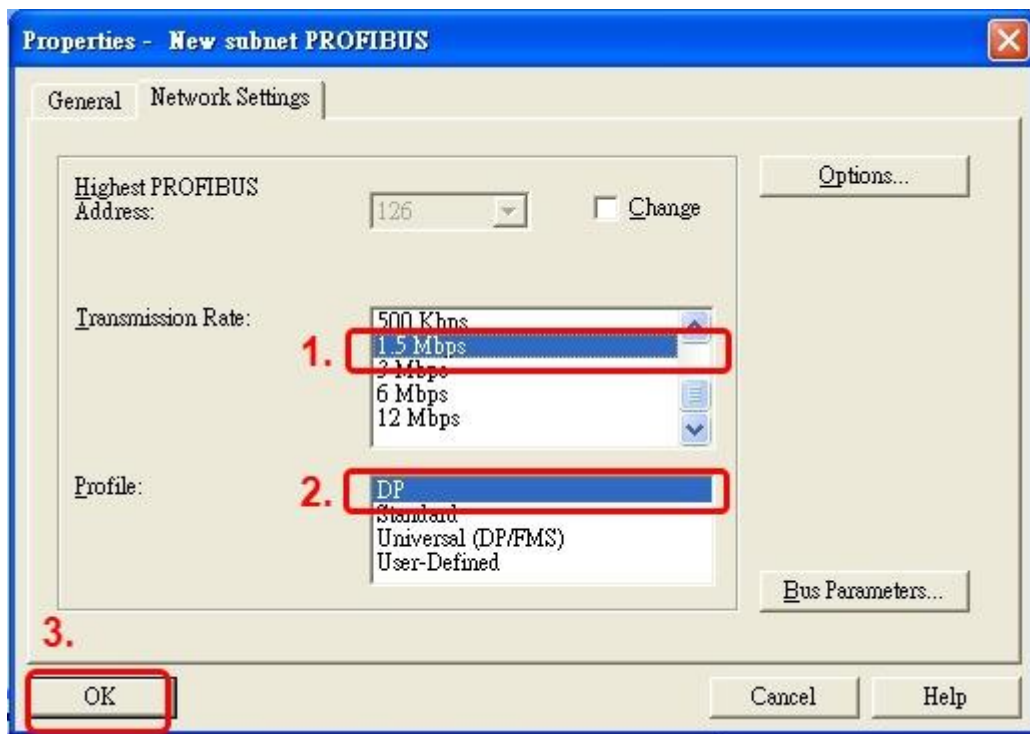
- Select "PROFIBUS" and then click "Properties".



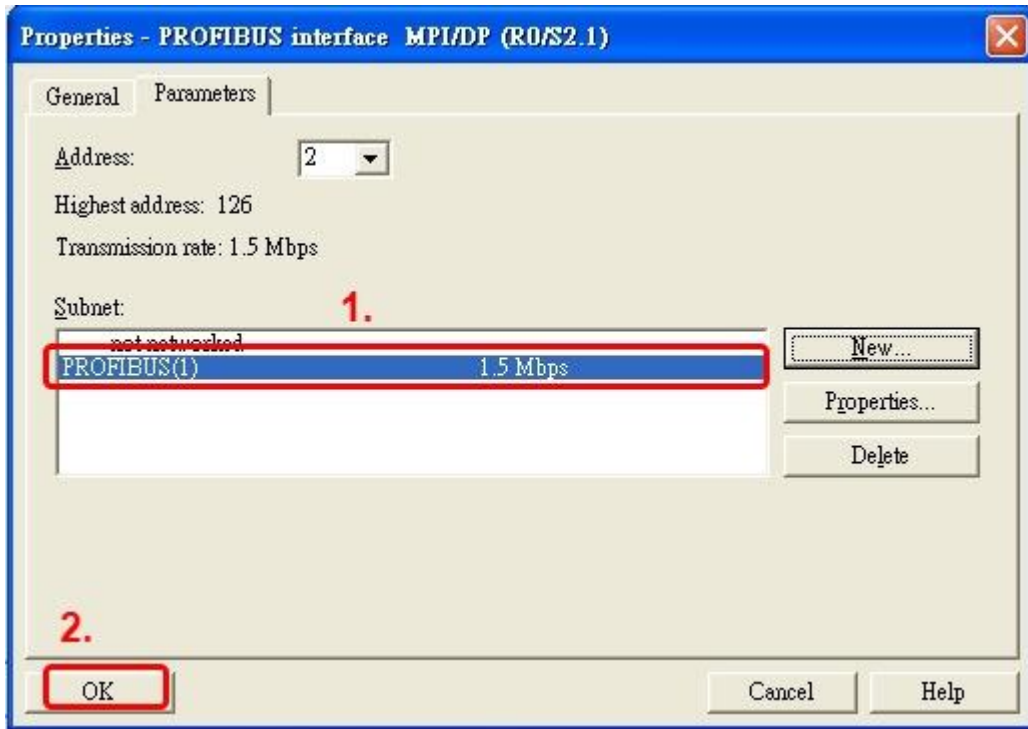
b. Click “Parameters”, and set mater station’s address, and then click ”New”



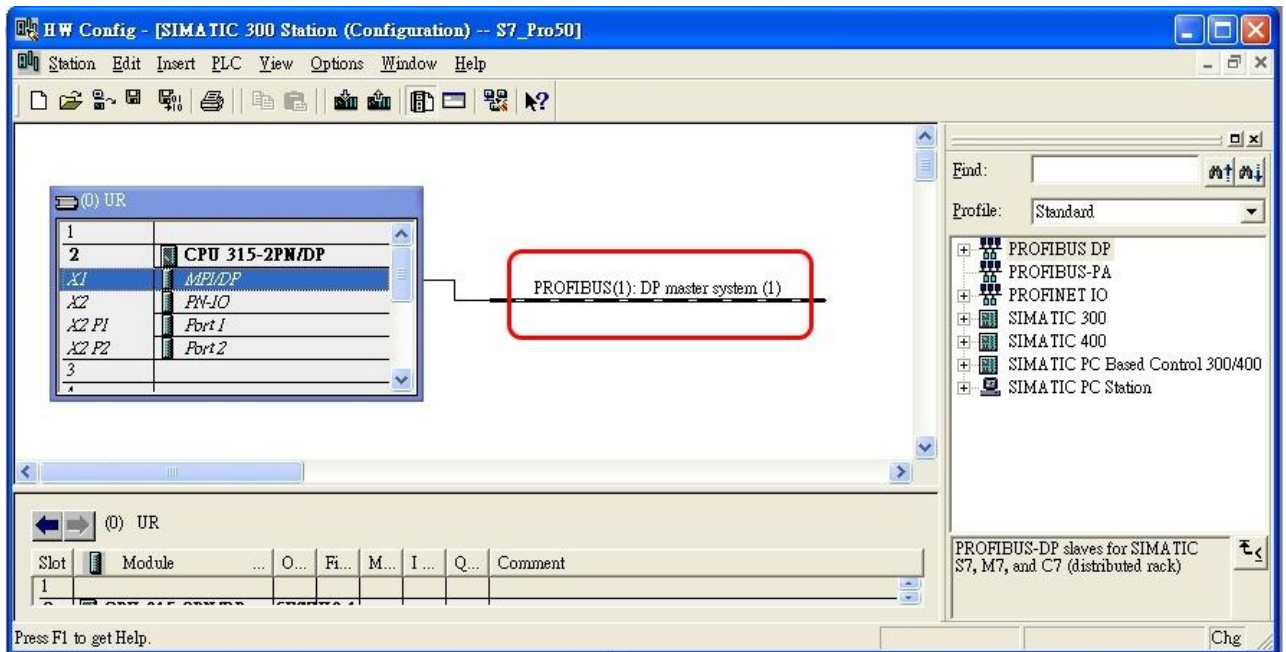
c. Select PROFIBUS Transmission Rate, Profile=DP and click”OK”



d. Select PROFIBUS subnet and then click "OK".

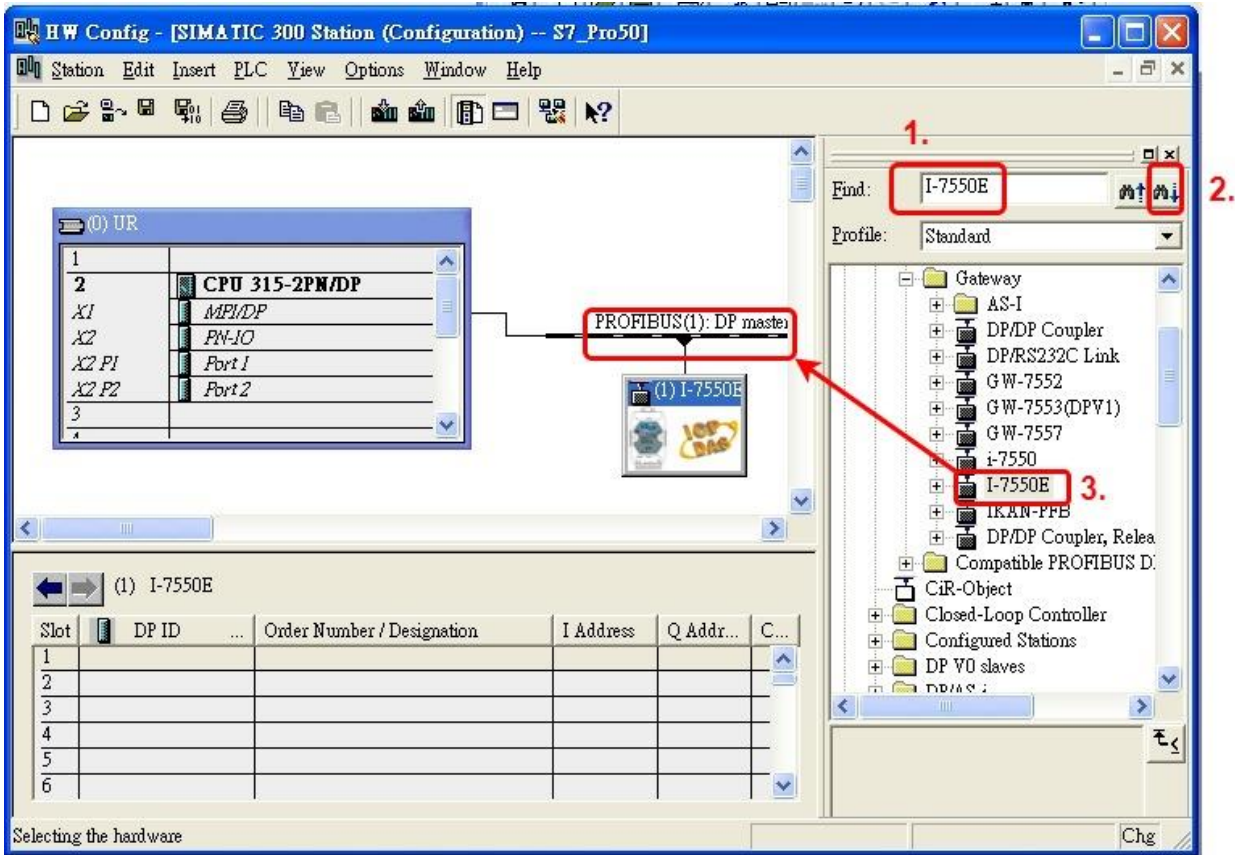


e. Confirm PROFIBUS subnet is available.

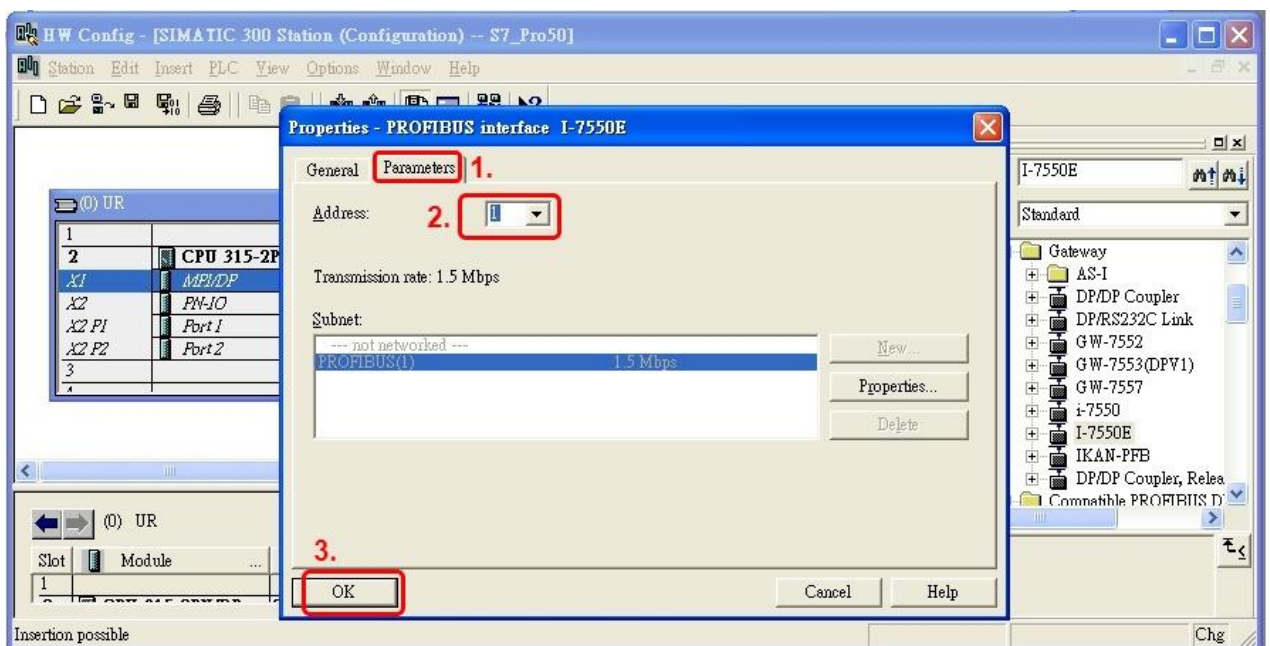


8. Add I-7550E

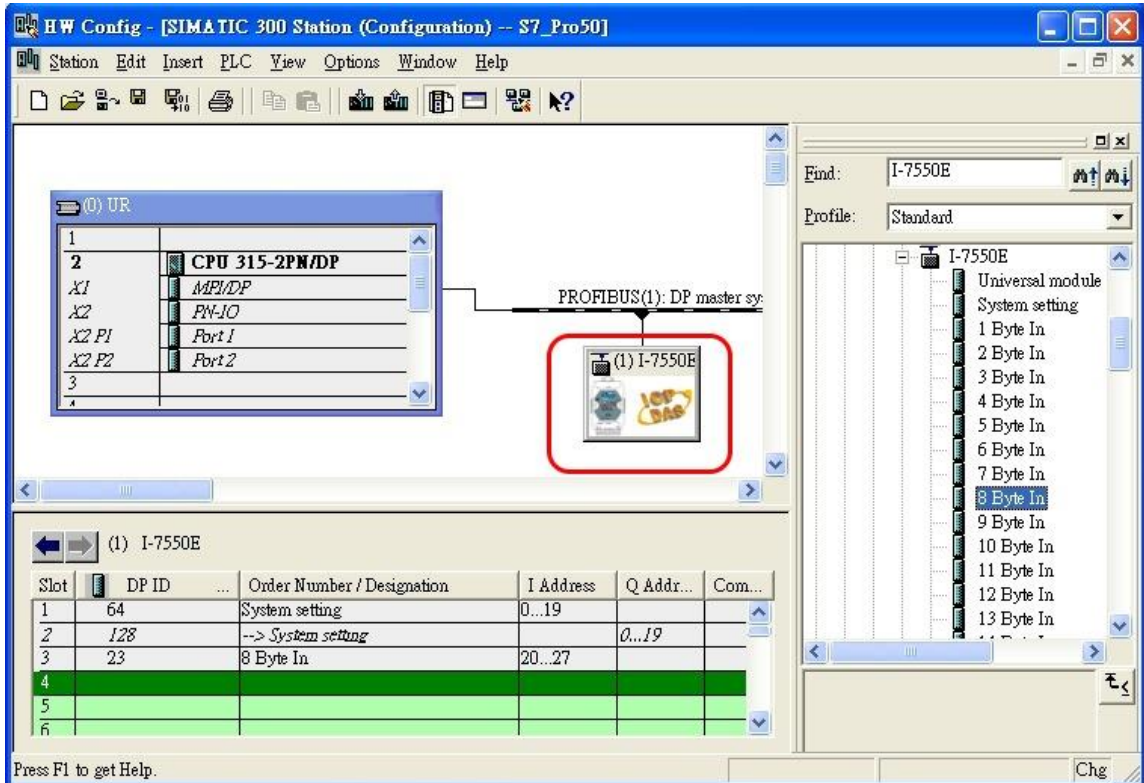
- a. Search I-7550E module. Then hold down the I-7550E's icon, and move the mouse to PROFIBUS subnet.



- b. Select "Parameter", and double click I-7550E's icon then set I-7550E's address in the "Properties" dialog (this address must be the same with dip switch of the I-7550E module and default is "1") then click "OK"

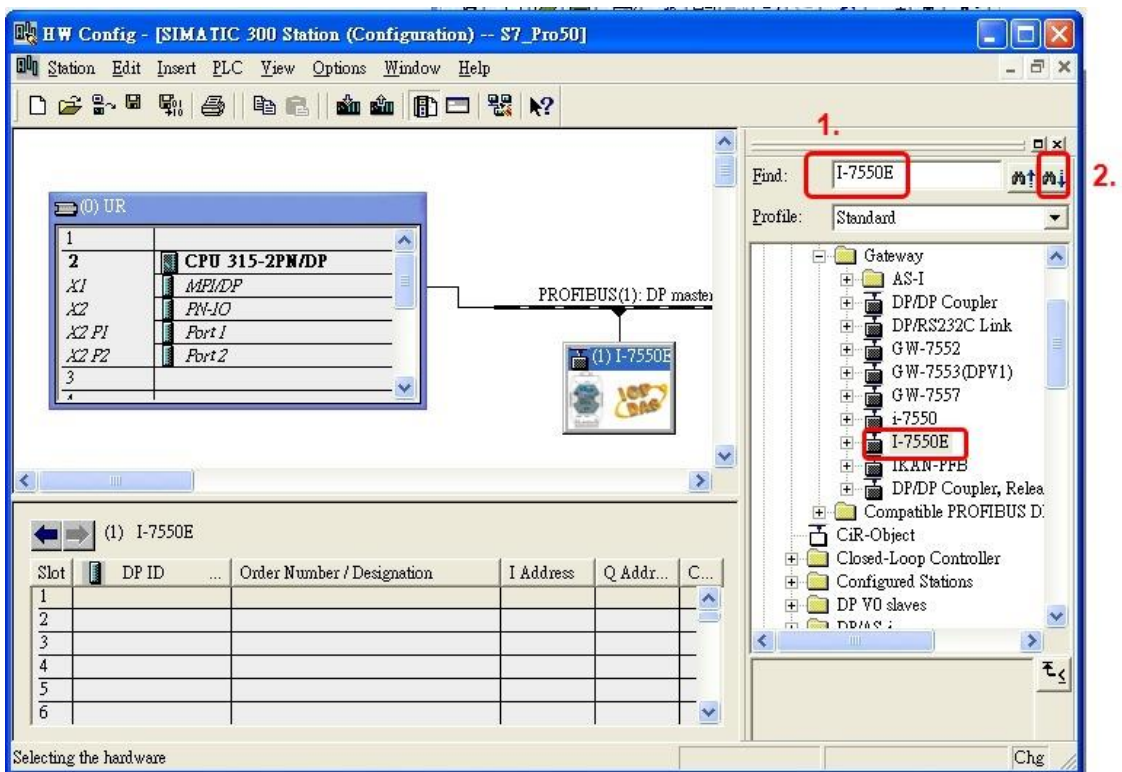


c. I-7550E adds completely

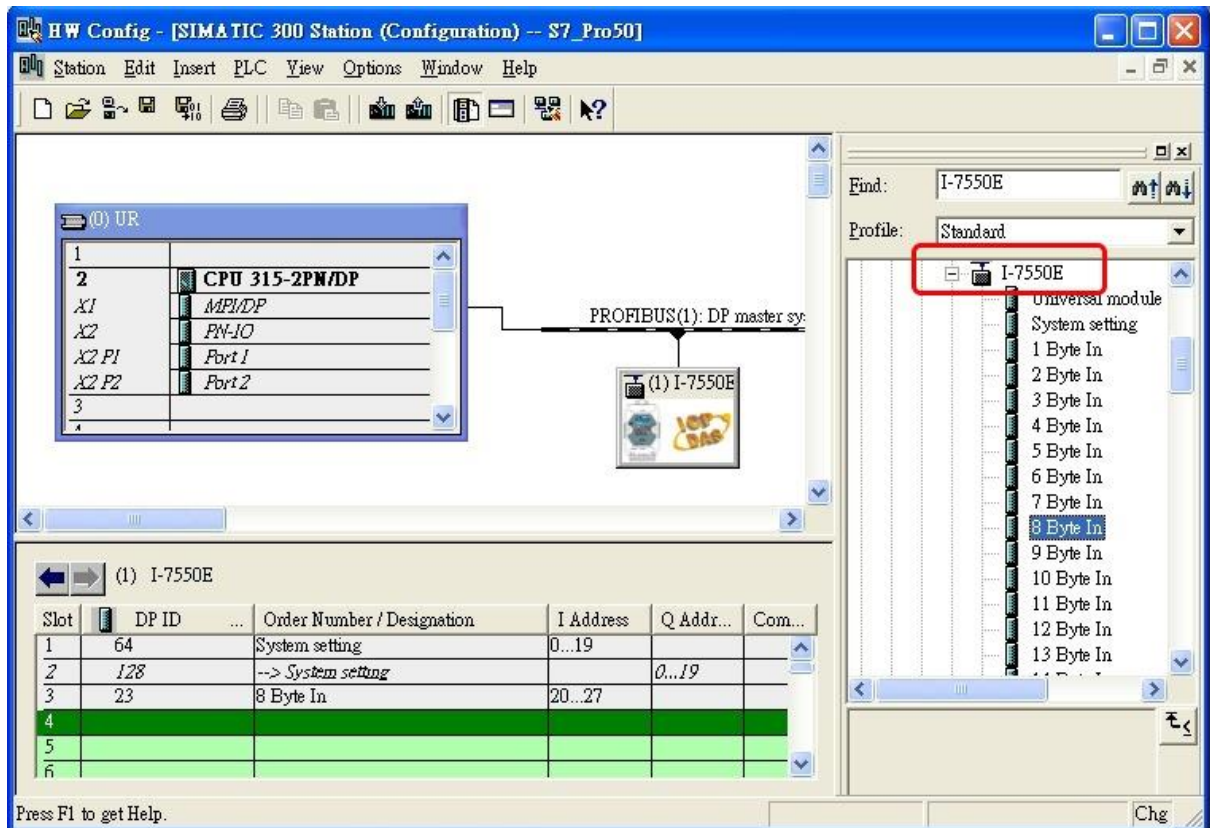


9. I-7550E module configuration

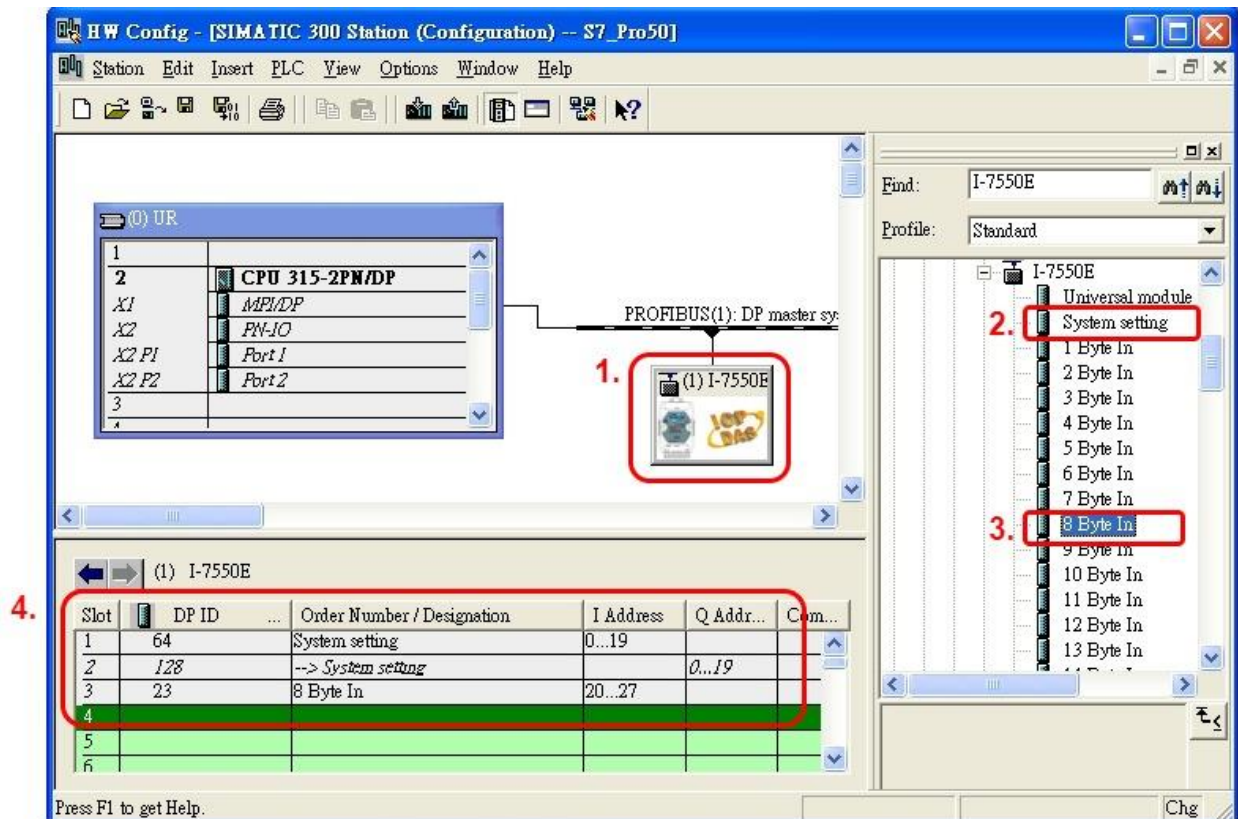
a. Search for I-7550E module



b. Open I-7550E folder



c. Click I-7550E module and double click “System setting module” and select the IO modules that you need (ex: 8 Byte In).



10. You have completed I-7550E's configuration and you just need to download the configuration to Siemens PLC ◦

