

Classification					
Author	Dino	Date	2023-03-07	No.	FAQ001

What is Cable Redundancy : Cable Redundancy is mainly designed for the compensation of communication cable faults in the EtherCAT system communication process. Under normal circumstances, It is designed as a circular, bidirectional operation. When a point in the ring network is disconnected due to a fault, Disconnect into two branches and still work.

Q: How to use ECAT-2513/2515/2517 cable redundancy ?

A: EtherCAT Junction(**ECAT-2513**) under the correct use of cable redundancy. It will be connected from OUT3 to the EtherCAT module and then connected to OUT2 this will form a cable redundancy, as shown in Figure 1. Conversely, if the connection goes in the opposite direction. There will be no cable redundancy, as shown in Figure 2.

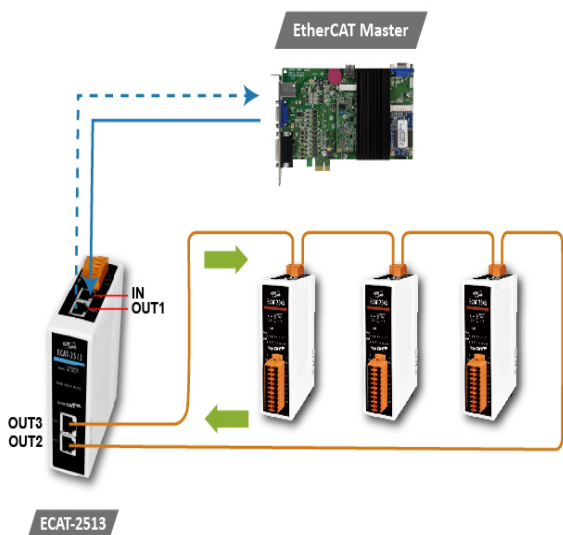


Figure 1

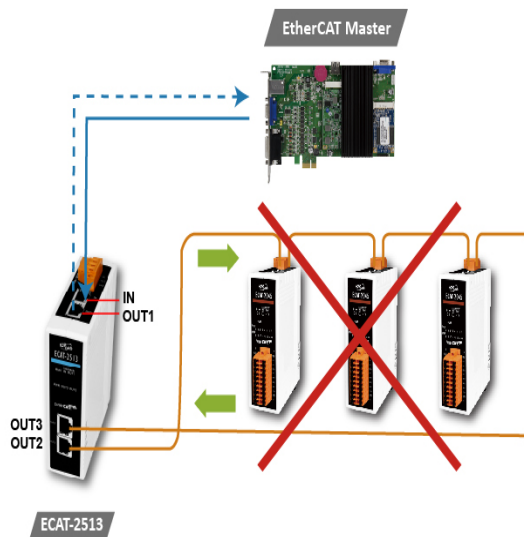


Figure 2

EtherCAT Junction(**ECAT-2515**) under the correct use of cable redundancy. It will be connected from OUT3(OUT5) to the EtherCAT module and then connected to OUT2(OUT4) this will form a cable redundancy, as shown in Figure 3. Conversely, if the connection goes in the opposite direction. There will be no cable redundancy, as shown in Figure 4.

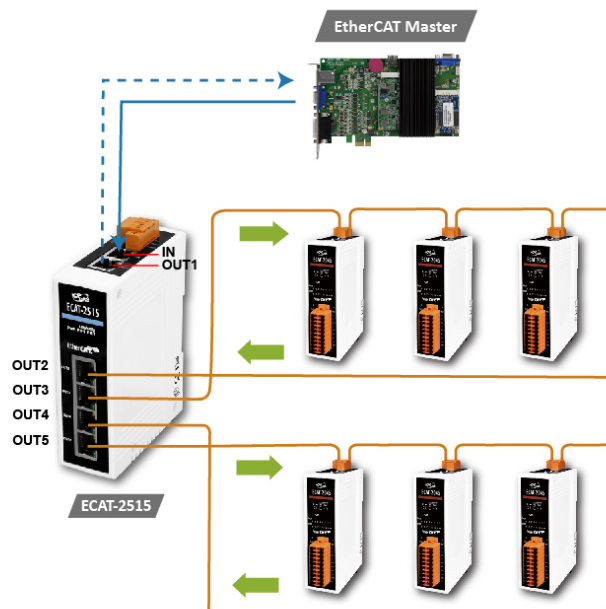


Figure 3

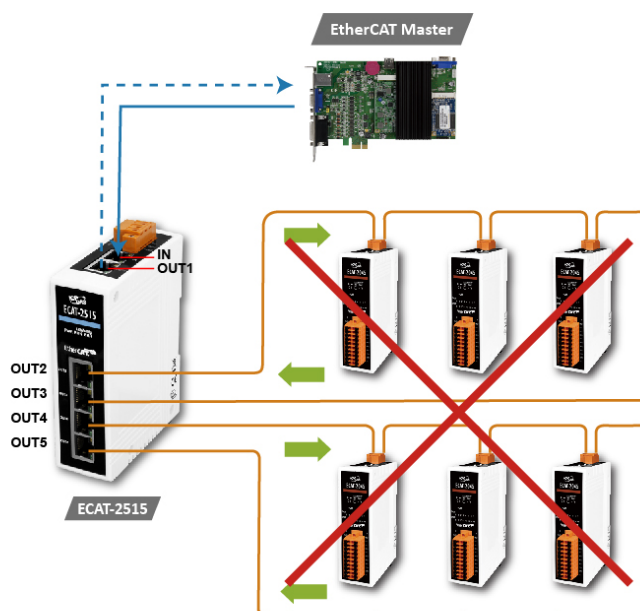


Figure 4

EtherCAT Junction(**ECAT-2517**) under the correct use of cable redundancy. It will be connected from OUT3(OUT5/OUT7) to the EtherCAT module and then connected to OUT2(OUT4/OUT6) this will form a cable redundancy, as shown in Figure 5. Conversely, if the connection goes in the opposite direction. There will be no cable redundancy, as shown in Figure 6.

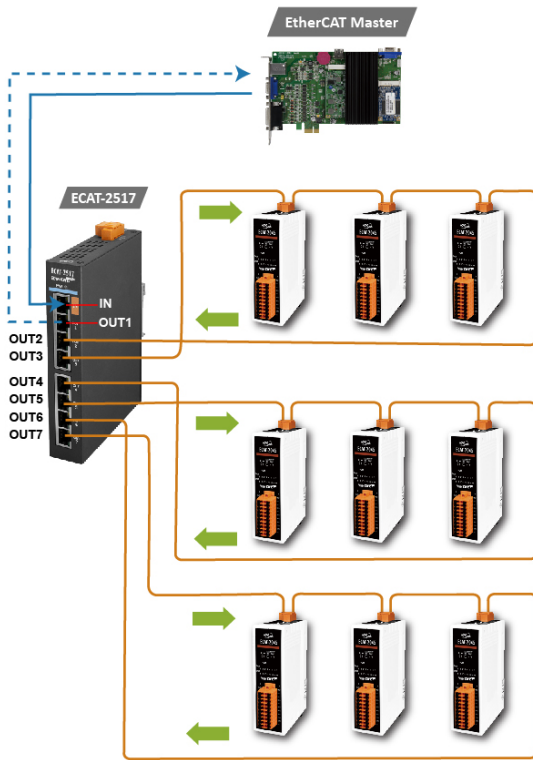


Figure 5

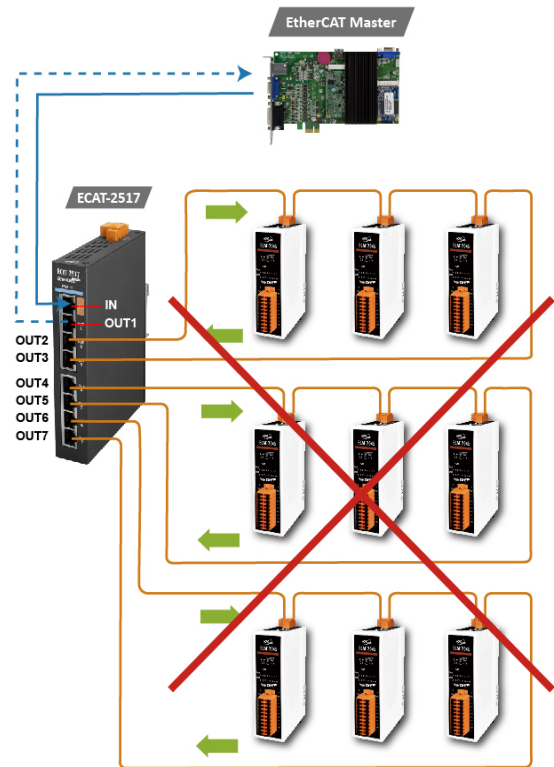


Figure 6