

GW-7243D FAQ

Q1: Which PLC the GW-7243D ever used with? (2011/04/02, Andy)	2
Q2: I have a problem when programming instances with FC5 function. I do not get a clear correspondence between bits in the master area (device net) and the slave area (modbus server). Can you send me an example of instance configuration? (2011/05/17, Andy)	2
Q3: How can I write more than 5 different bits, (via FC5), if I only has 5 instances per server? (2011/05/17, Andy)	4
Q4: Why there displayed “Check sum Error!!!” message when setting GW-7243D IP parameter by using the Utility tool. (2012/12/25, Andy)	5
Q5: Why the module still in”Init mode”, after switch the dip switch on the backplane to “normal” position? (2017/12/15, Andy)	5

Q1: Which PLC the GW-7243D ever used with? (2011/04/02, Andy)

A:

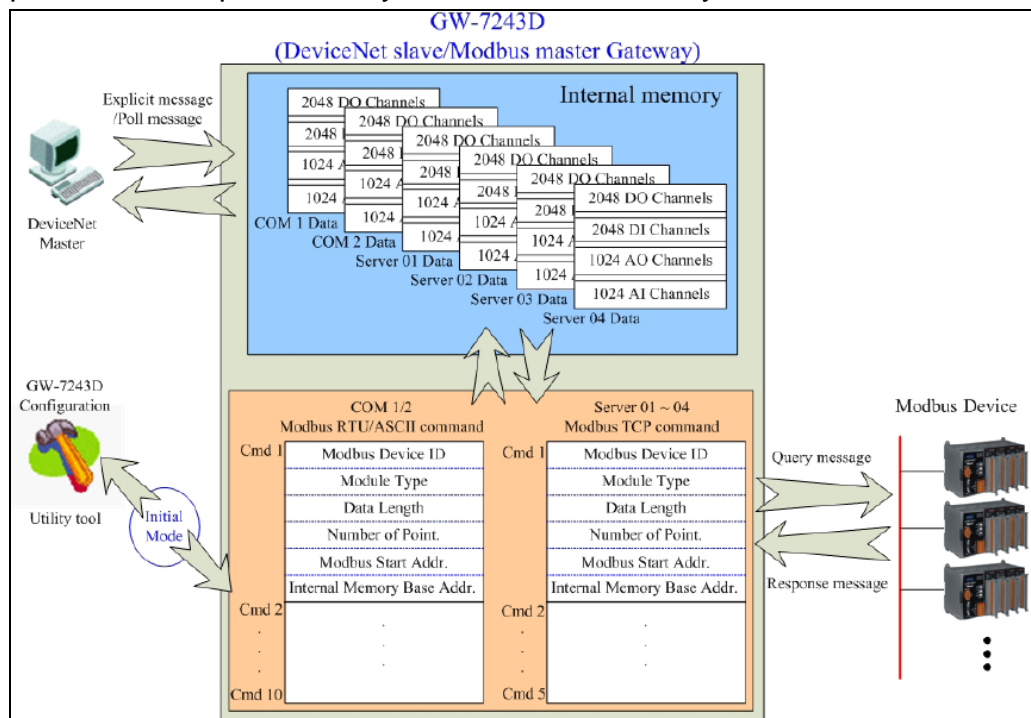
1. The customer has tested the AB PLC 1756-L55 and 1756-DNB with the GW-7243D.
2. We have roughly tested the communication between CJ1M CPU11 + DRM21 and GW-7243D. Basically, the DRM21 can build the DeviceNet connection with the GW-7243D, and get the IO data from the GW-7243D.

(2012/04/02, Andy)

Q2: I have a problem when programming instances with FC5 function. I do not get a clear correspondence between bits in the master area (device net) and the slave area (modbus server). Can you send me an example of instance configuration? (2011/05/17, Andy)

A:

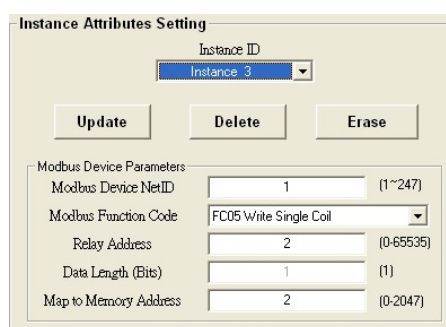
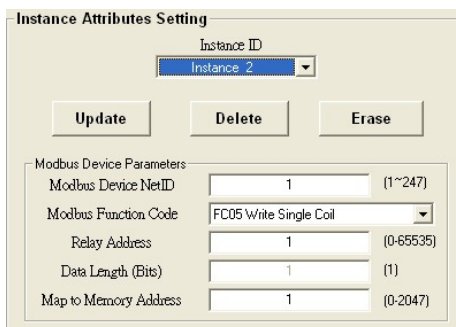
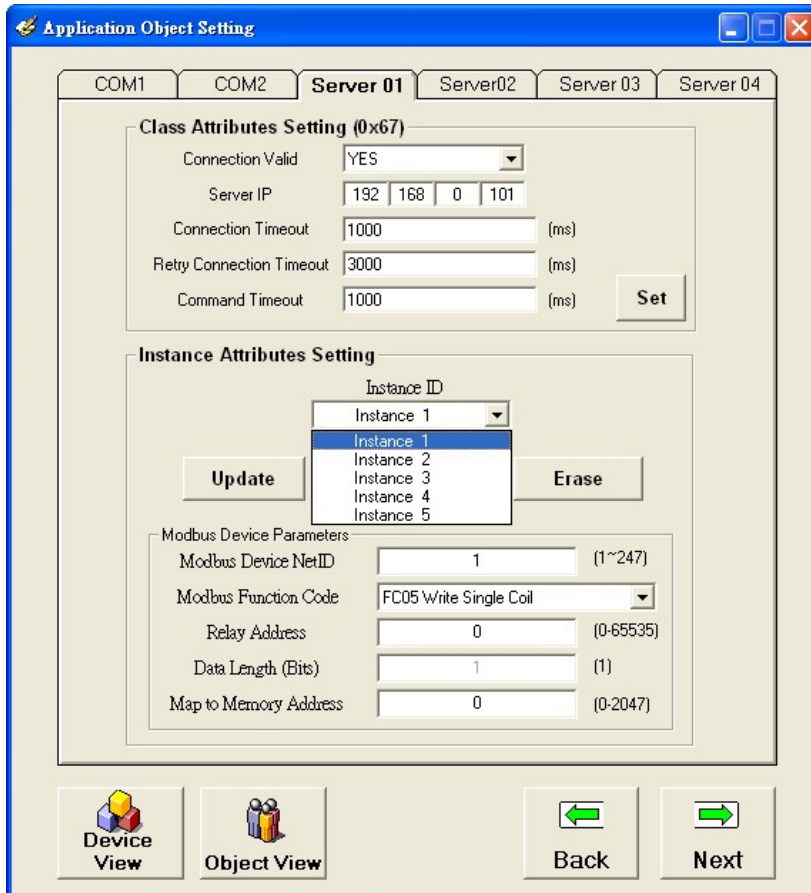
The Internal memory space of COM1/2 and Server01 to 04 are 2048 DO, 2048 DI, 1024 AO, 1024 AI. And these memory addresses are mapped when setting the parameter “Map to Memory Address” on the Utility tool.



If you want to use FC5 to configure 5 instances on one server, the DeviceNet command and Utility setting picture are listed below.

Step1: Setting the GW-7243D module

FC05 is be used to control one modbus address. So here we map the modbus address 0x0 ~ 0x4 to Internal DO memory 0x0 ~ 0x4.



Instance Attributes Setting

Instance ID: Instance 4

Update Delete Erase

Modbus Device Parameters

Modbus Device NetID	1	(1~247)
Modbus Function Code	FC05 Write Single Coil	
Relay Address	3	(0-65535)
Data Length (Bits)	1	(1)
Map to Memory Address	3	(0-2047)

Instance Attributes Setting

Instance ID: Instance 5

Update Delete Erase

Modbus Device Parameters

Modbus Device NetID	1	(1~247)
Modbus Function Code	FC05 Write Single Coil	
Relay Address	4	(0-65535)
Data Length (Bits)	1	(1)
Map to Memory Address	4	(0-2047)

Step2: Then these modbus addresses will be map to DeviceNet Class 0x67, Instance 0x01~0x05 and Attribute 0x0B.

Instance 0x01 => Modbus Address 0x0, (0x00 => Relay OFF, other => Relay ON)

Instance 0x02 => Modbus Address 0x1, (0x00 => Relay OFF, other => Relay ON)

Instance 0x03 => Modbus Address 0x2, (0x00 => Relay OFF, other => Relay ON)

Instance 0x04 => Modbus Address 0x3, (0x00 => Relay OFF, other => Relay ON)

Instance 0x05 => Modbus Address 0x4, (0x00 => Relay OFF, other => Relay ON)

Then user can use DeviceNet Set/Get method to control Class 0x67, Instance 0x01~0x05 and Attribute 0x0B.

(2012/05/17, Andy)

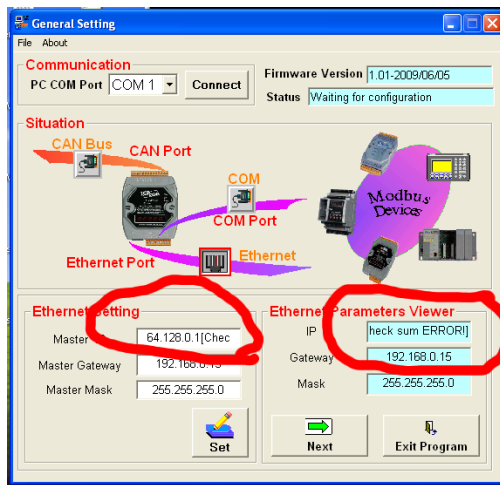
Q3: How can I write more than 5 different bits, (via FC5), if I only has 5 instances per server? (2011/05/17, Andy)

A:

Now each server supports maximum 5 instances. If user use FC5 to set each instance, each instance just can supports 1 bit modbus data. If user want to write more than 5 different bits by using FC05, user need to use another server 02~04 (using the same server IP). But via this method, the Modbus TCP device needs to allow multi-client to connect at the same time.

(2012/05/17, Andy)

Q4: Why there displayed “Check sum Error!!!” message when setting GW-7243D IP parameter by using the Utility tool. (2012/12/25, Andy)



A:

The IP parameter saved in the EEPROM might be broken. Please send this module back to us for a return merchandise authorization.

(2012/12/25, Andy)

Q5: Why the module still in "Init mode", after switch the dip switch on the backplane to "normal" position? (2017/12/15, Andy)

A:

Beside the INIT pin on the backplane of the module, there exist other "INIT*" pin on the power side. Please remove the connecton between the INIT* and GND, after configuration.

(2017/12/15)

5.3.1 Steps to configure the GW-7243D

Step 1: Before configuring the GW-7243D, turn it off. Then connect the INIT* pin with the GND pin of the GW-7243D as following picture. Connect an available COM port of PC with the COM1 of GW-7243D. Then turn on the GW-7243D.

