



PISO-CPM100U-D

1 Port Intelligent CANopen Master Universal PCI Board

Features

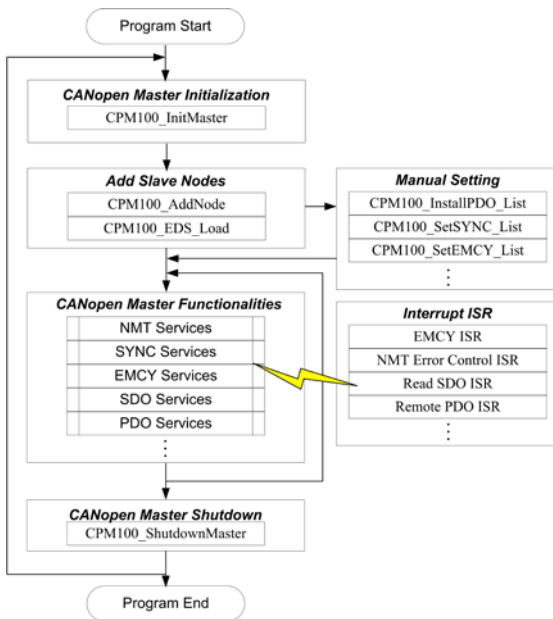
- NMT: Master
- CANopen Version: DS-301 v4.01
- Error Control: Support Guarding and Heartbeat protocol
- Support EMCY receiving
- Provide dynamic PDO functions
- Provide 5 sets of SYNC cyclic transmission
- Transmission type of PDO is supported
- Support Multi-Master to Single-Slave architecture
- Auto select with expedition mode or segment mode
- Support load EDS file



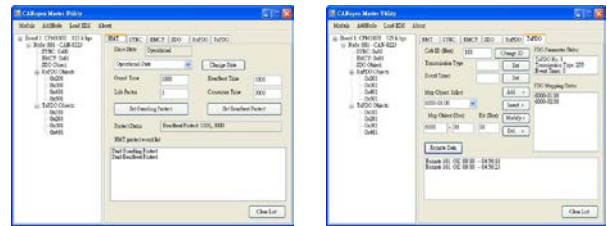
Introduction

The PISO-CPM100U has followed the CiA CANopen specification DS-301 V4.02. With the built-in 80186 80M Hz CPU, this card can be applied in high transmission applications. The 16-bit on-board microcontroller with real-time O.S., MiniOS7, allows many features, such as real-time message transmission and reception, filtering, preprocessing, and storage of CAN messages. It supports the timestamp of PDO message with at least 1 ms precision. Assorted with the free tool (CPM_Utility), users can easily manage and integrate with CANopen industrial devices.

Design Flowchart

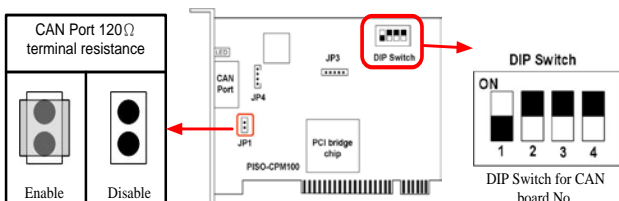


Demos Features

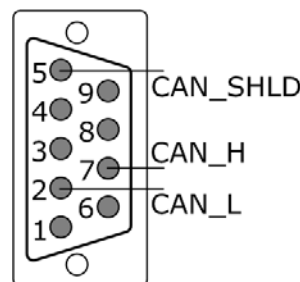


The software utility can easily access the I/O data of all the slave devices. The users can monitor the input data of the specific slave device and change the output data to the remote slave device with this utility.

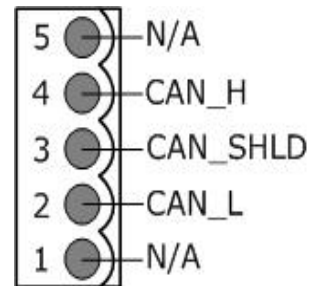
Terminal Resistor & DIP Switch



Pin Assignments



9-pin D-sub male connector

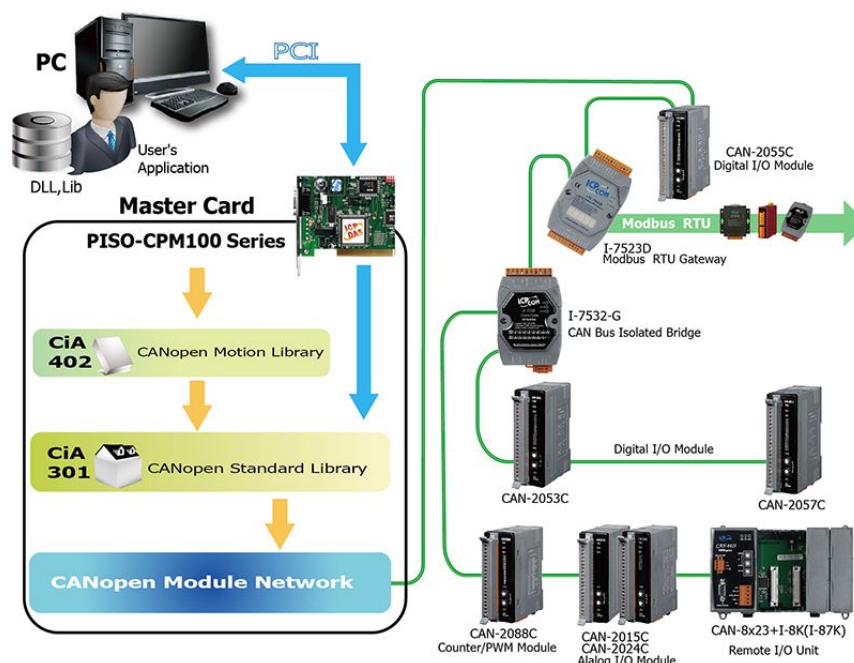


5-pin screw terminal connector

Specifications

Hardware	
CPU	80186, 80 MHz or compatible
SRAM/Flash/EEPROM	512 KB / 512 KB / 2 KB
Bus Interface	
Type	Universal PCI supports both 5 V and 3.3 V PCI bus
Board No.	By DIP switch
CAN Interface	
Controller	NXP SJA1000T with 16 MHz clock
Transceiver	NXP 82C250
Channel number	1
Connector	9-pin male D-Sub (CAN_L, CAN_SHLD, CAN_H, N/A for others) 5-pin screwed terminal block (CAN_L, CAN_SHLD, CAN_H, N/A for others)
Baud Rate (bps)	10 k, 20 k, 50 k, 125 k, 250 k, 500 k, 800 k, 1 M
Transmission Distance	Depend on baud rate (for example, max. 1000 m at 50 kbps)
Isolation	3000 V _{DC} for DC-to-DC, 2500 V _{rms} for photo-couple
Terminal Resistor	Jumper for 120 Ω terminal resistor
Specification	ISO-11898-2, CAN 2.0A and CAN 2.0B
Protocol	CANopen DS-301 ver4.02, DS-401 ver2.1
LED	
Round LED	Green LED, Red LED
Software	
Driver	Windows 2K/XP
Library	VB 6.0, VC++ 6.0, BCB 6.0
Power	
Power Consumption	300 mA @ 5 V
Mechanism	
Dimensions	138 mm x 22mm x 105 mm (W x L x H)
Environment	
Operating Temp.	0 ~ 60 °C
Storage Temp.	-20 ~ 70 °C
Humidity	5 ~ 85% RH, non-condensing

Application



Ordering Information

PISO-CPM100U-D	1 Port Intelligent CANopen Master Universal PCI Board with D-sub 9-pin male connector
-----------------------	---