

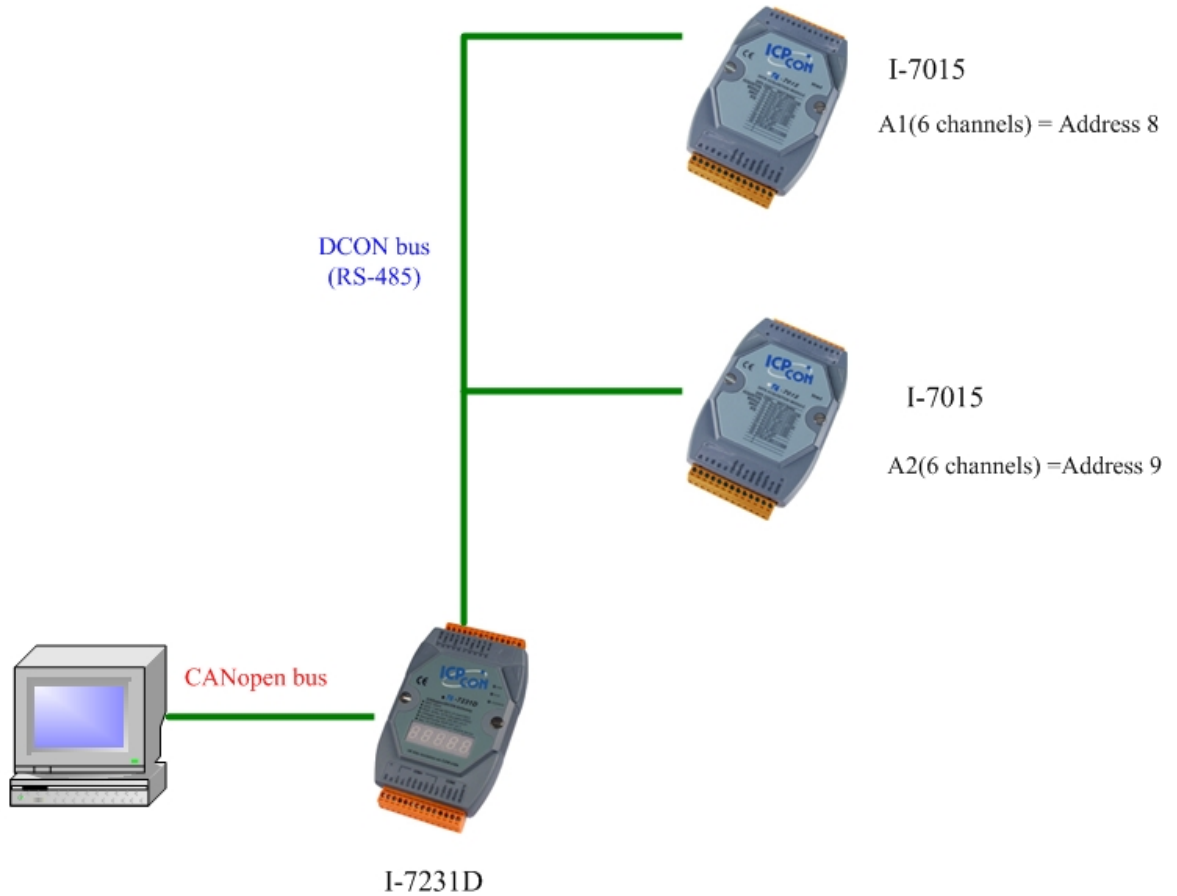
I-7231D FAQ

Q1.	How to create a CANopen slave with I-7231D and two I-7015?.....	2
Q2.	What happens when certain DCON-module was disconnected or out of order?	3
Q3.	How to update the I-7231D firmware?.....	4
Q4.	How do I know that I-7231D works correctly?.....	7

Q1. How to create a CANopen slave with I-7231D and two I-7015?

A:

It is showed as below figure.



CANopen support Object dictionary

Object 1A01
(TxPDO 2 COB-ID 281)

Index 0x6401 subIndex 01 (A1)
Index 0x6401 subIndex 02 (A1)
Index 0x6401 subIndex 03 (A1)
Index 0x6401 subIndex 04 (A1)

Object 1A02
(TxPDO 3 COB-ID 381)

Index 0x6401 subIndex 05 (A1)
Index 0x6401 subIndex 06 (A1)
Index 0x6401 subIndex 07 (A2)
Index 0x6401 subIndex 08 (A2)

Object 1A03
(TxPDO 4 COB-ID 481)

Index 0x6401 subIndex 09 (A2)
Index 0x6401 subIndex 0A (A2)
Index 0x6401 subIndex 0B (A2)
Index 0x6401 subIndex 0C (A2)

(2011/1/5, Hugo)

Q2. What happens when certain DCON-module was disconnected or out of order?

A:

1. If you can read the data for the object index 0x6401 sub-index 01 ~ Index 0x6401 sub-index 06, Because those data were saved in the I-7231D AI registers before the AI be disconnected, you can read those data from I-7231D.
2. If the DCON module was disconnected, you would receive EMCY message. Please refer to the I-7231D user manual in P.137 and P.152. We have provided the Special Functions for DCON modules.

(2011/1/5, Hugo)

Q3. How to update the I-7231D firmware?

A:

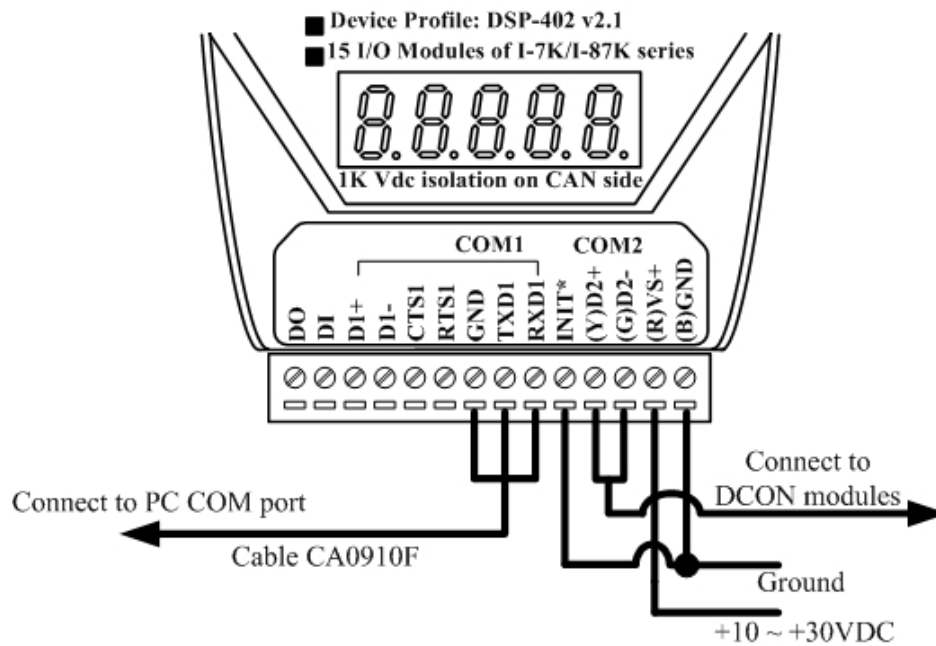
1. Please download the MiniOS7 Utility from the web side and setup it.

<http://www.icpdas.com/download/download-list.htm>

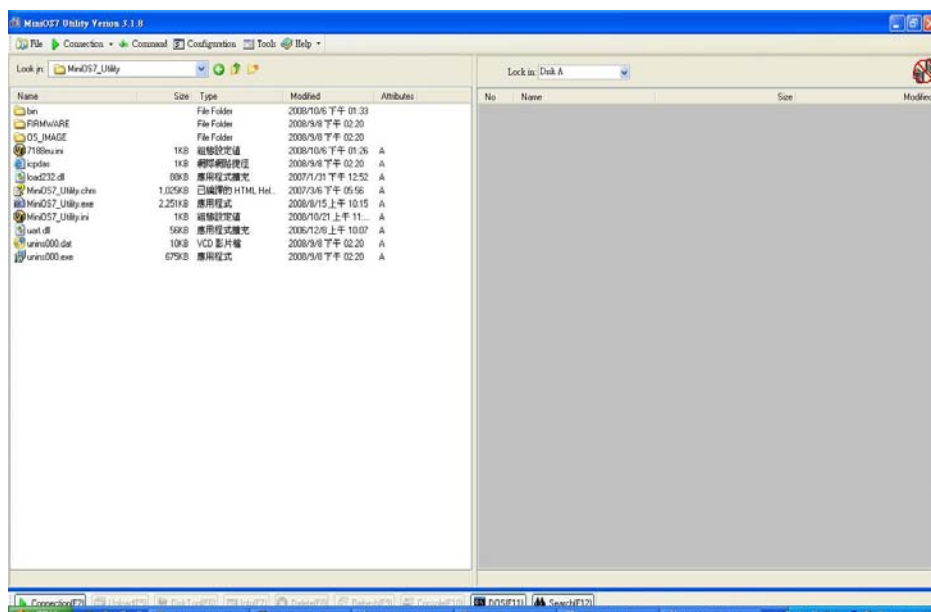
Please download the last I-7231D firmware from the web side.

http://ftp.icpdas.com/pub/cd/fieldbus_cd/canopen/gateway/i-7231d/firmware/

2. Connect the wires as follows.

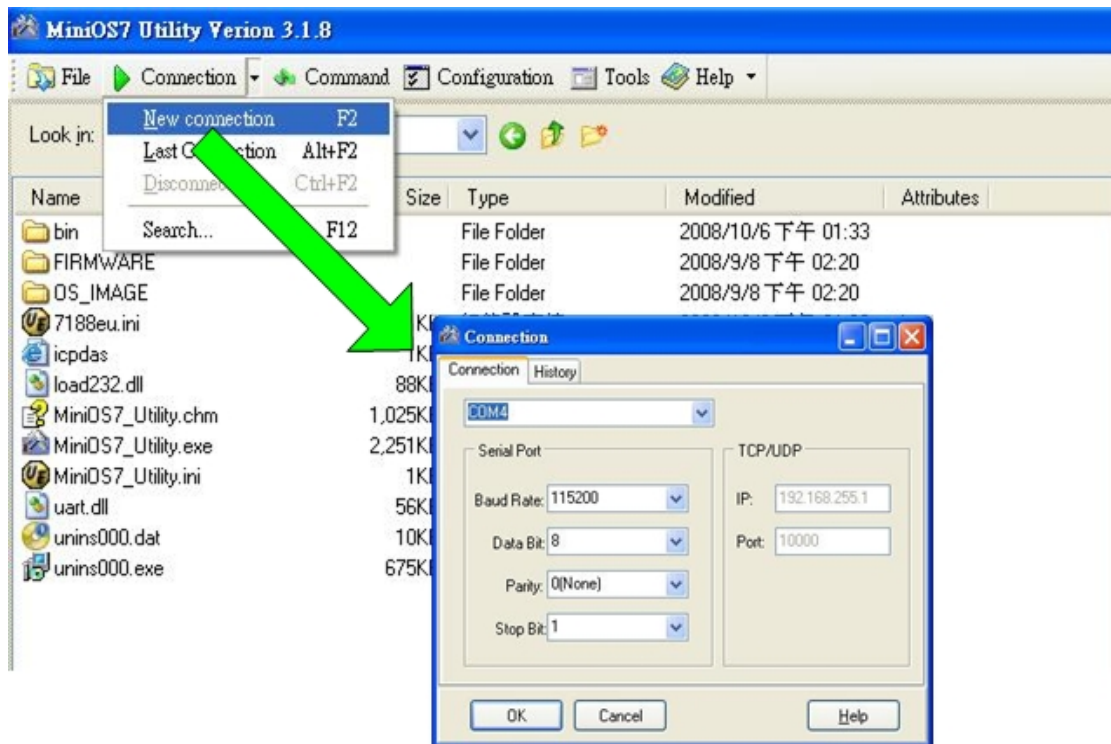


3. Turn the I-7231D power on, then running the MiniOS7 Utility. And you will see the window as follow.

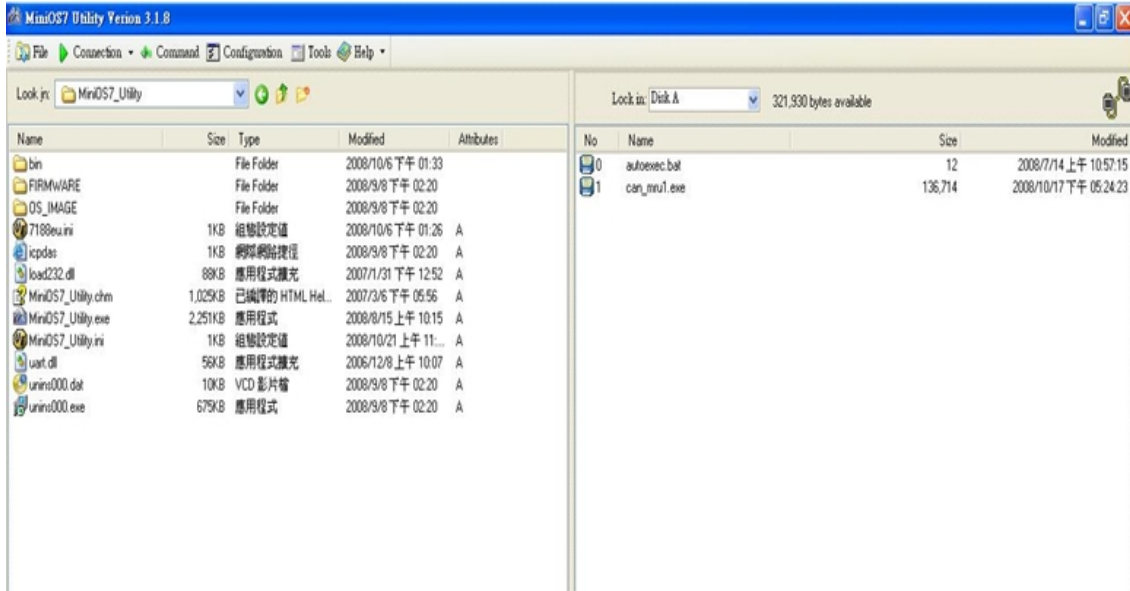


4. Please click the “New connection” item to create a new connection to the I-7231D

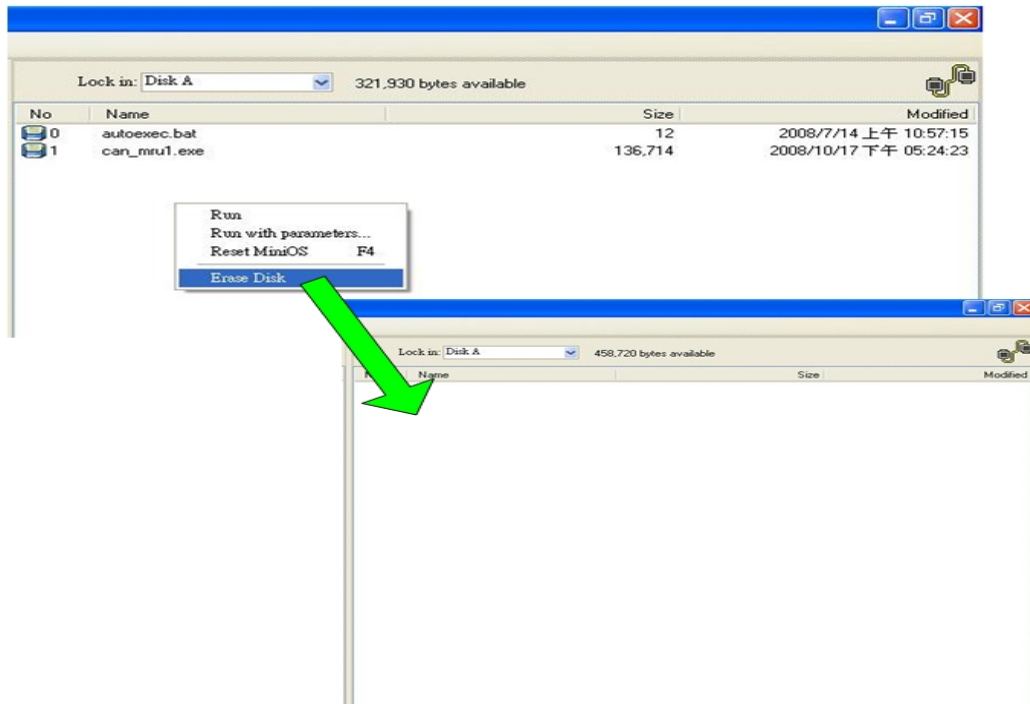
module as follow.



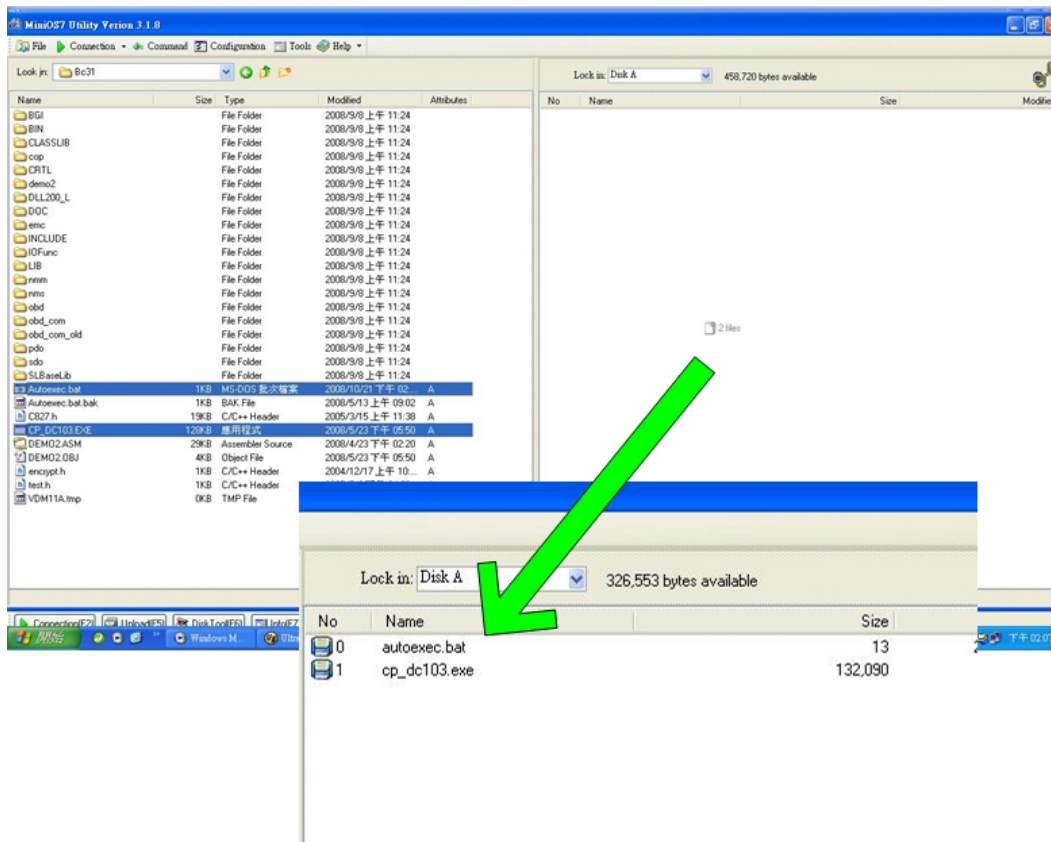
5. If connecting ok, the follow window will be show.



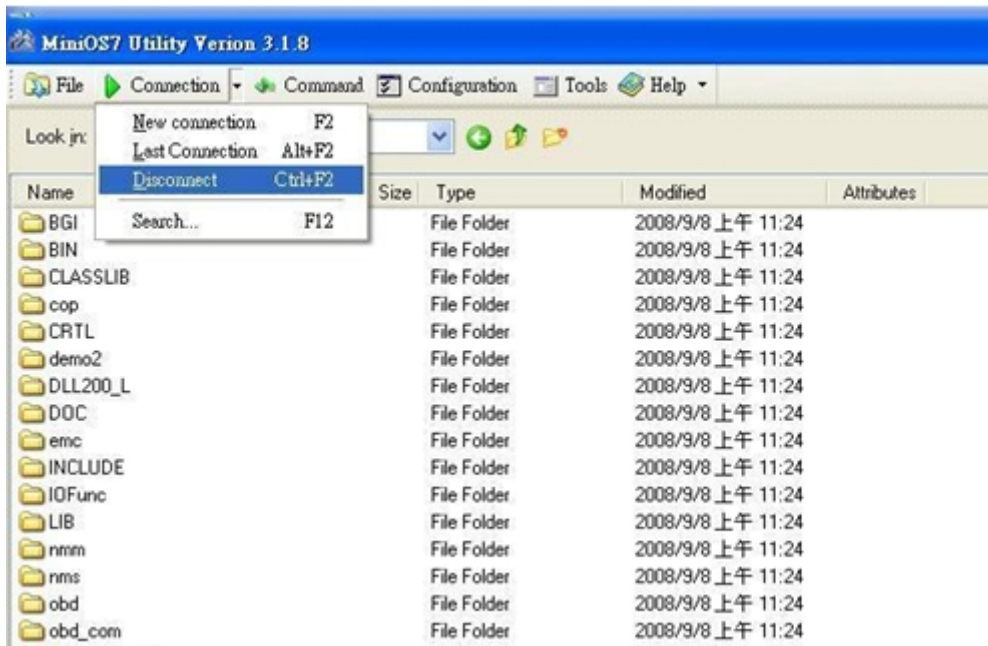
6. Please click the mouse right key and select “Erase Disk” to clean the I-72321D firmware and autoexec.bat.



7. Please selecting the I-7231D firmware and autoexec.bat drag to the right window .When finish the process, the file will be show in the right window as follow.



8. Please click the “Disconnect” item as follow, and then close the MiniOS7 Utility.



9. When finish all above steps, please turn the power off and take away the line from I-7231D INT* pin link to the GND pin, then turn the power on, the I-7231D will work normal.

(2011/1/5, Hugo)

Q4. How do I know that I-7231D works correctly?

A:

There are power 、 RUN 、 ERROR 、 OVERRUN on I-7231D. Users can judge the status of I-7231D by checking the conditions of those LEDs on I-7231D.

For more information about the meanings of the LEDs, please refer to the section 2.3 and 2.4 of I7231D user’s manual.

(2011/1/5, Bear)