

IR Temperature Sensor iSN-81X Series

IIoT Applications for Distribution Cabinet Monitoring



iSN-812-MRTU


iSN-812-MTCP
iSN-813-MTCP


iSN-811C-MTCP



VPD-170-IRT

- HMI centralized management of remote sensors.
- Data logging analysis to achieve preventive maintenance.
- Non-contact measurement reduces process intervention.

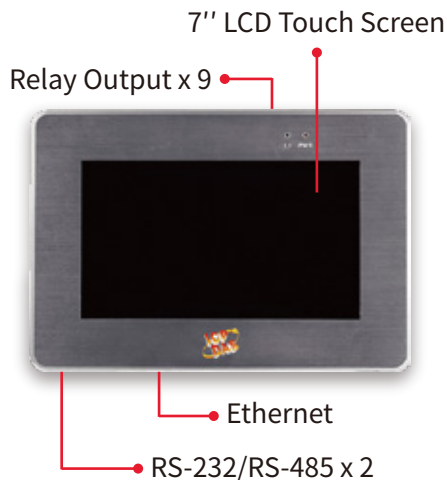
» Features

Using thermal imaging technology to monitor the temperature inside the distribution cabinet. It is a new way to reduce inspection time and risks of abnormal stops.



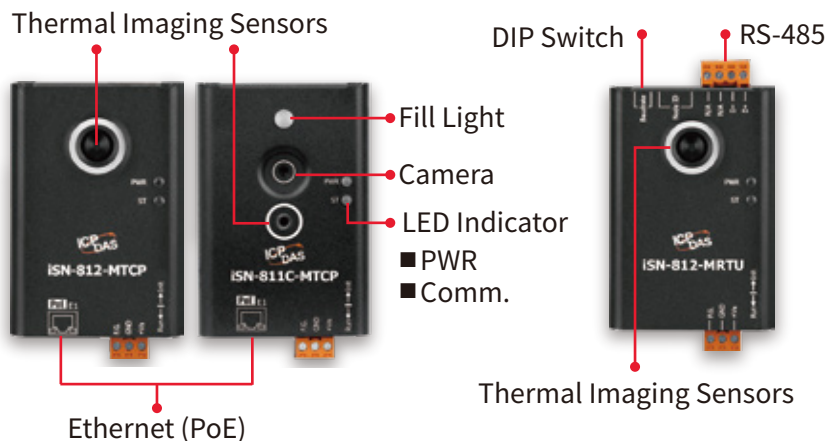
VPD-170-IRT

Data Concentrator



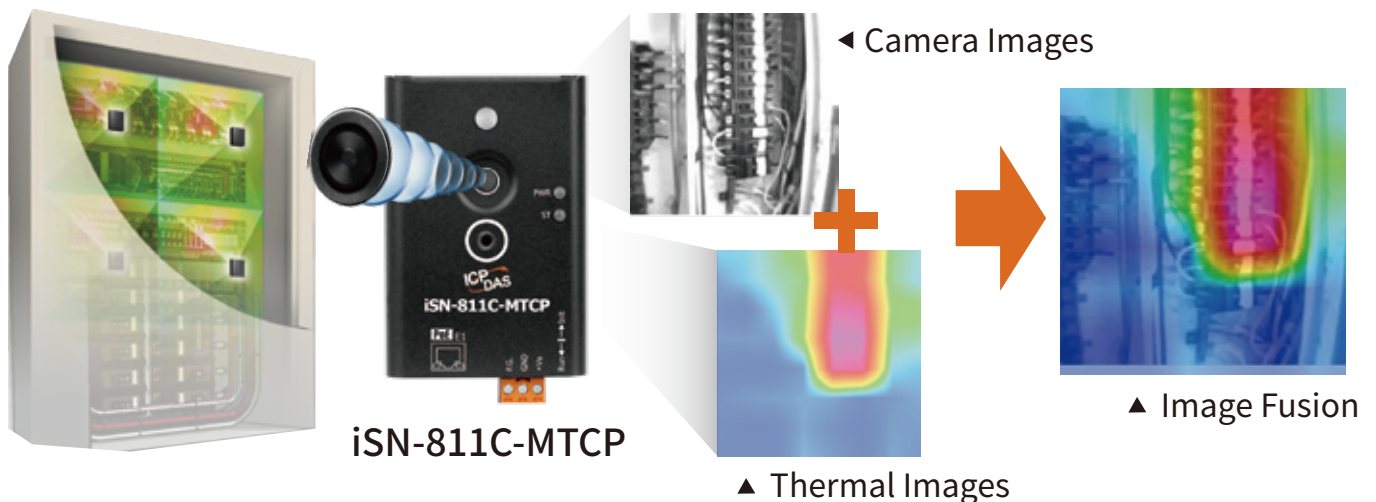
iSN-81x-MTCP / iSN-81x-MRTU

IR Temperature Sensing Module



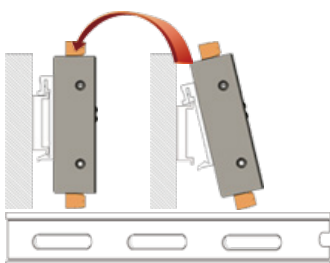
Thermal Imaging + Real-time Streaming Determine Abnormal Conditions On-site

iSN-811C-MTCP is the first choice for detecting electrical anomalies, mechanical overheating, equipment inspections, and other troubleshooting tasks. It combines thermal imaging sensors and visible light cameras, offering integrated dual-image information for quicker problem detection.

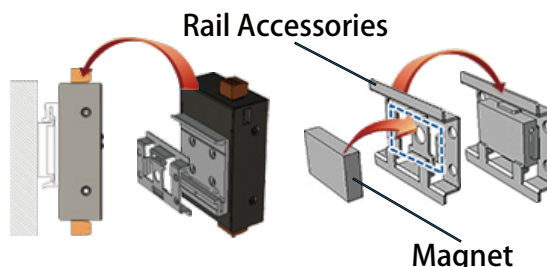


Various Installation Options for Various Fields

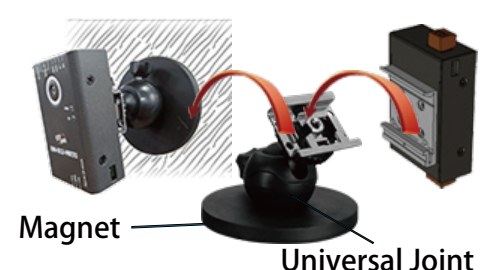
Rail Mounting



Magnetic Mounting



Universal Holder



IRT 系列 紅外線溫度感測

支援 Modbus / MQTT / RESTful 通訊協議



工業標準

區域網路

集中式管理



IoT標準

主動發送

分散式管理



跨平台應用

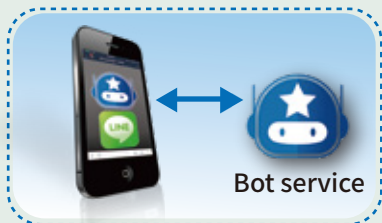
分散式管理



iSN-800 series integrates detection modules and WISE controllers, allowing the temperature measurement system to be expanded to include monitoring needs such as power, gas, and vibration. Abnormal alarm notification to grasp the on-site situation in real time.



Production Line



Edge Controller
WISE-5231M-4GE



PoE Ethernet Switch
NSM-208PSE

» Production Line – Safety & Preventive

Temperature, vibration, and power monitoring reduce failures and defective products. Exceptions are sent to Line messages for immediate processing to reduce abnormal losses.

- iSN-811C-MTCP monitors the temperature and real-time image of equipment and distribution cabinet.
- Comprehensive monitoring of vibration (AR-300T) and power (PM-2133D-MTCP).
- WISE-5231M-4GE sends abnormal messages for immediate processing.

Accelerometer Data Logger
(Thermistor Input)
AR-300-T



▼ Assembly line/Machine

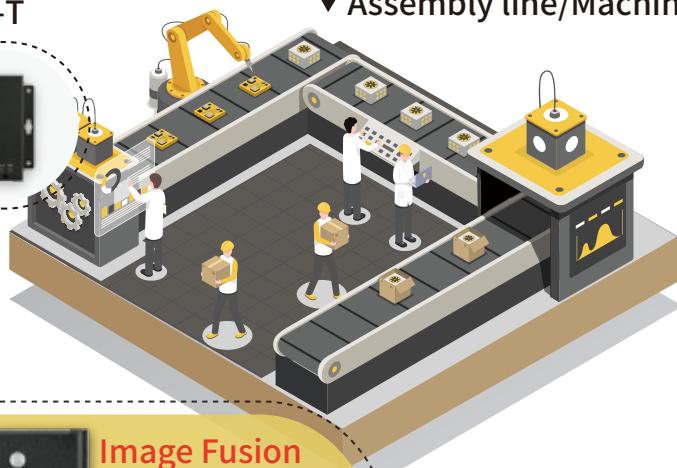
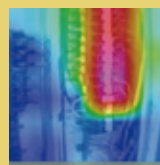


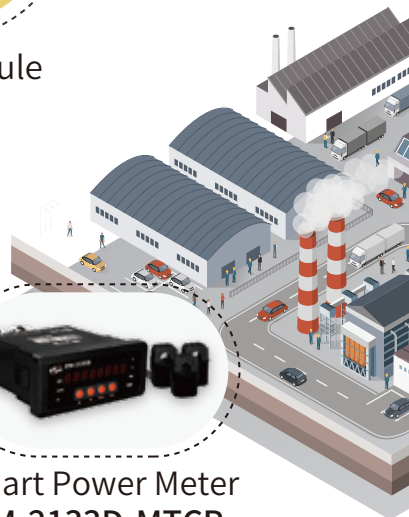
Image Fusion



IR Temperature Sensing Module
iSN-811C-MTCP

Ethernet
Modbus TCP

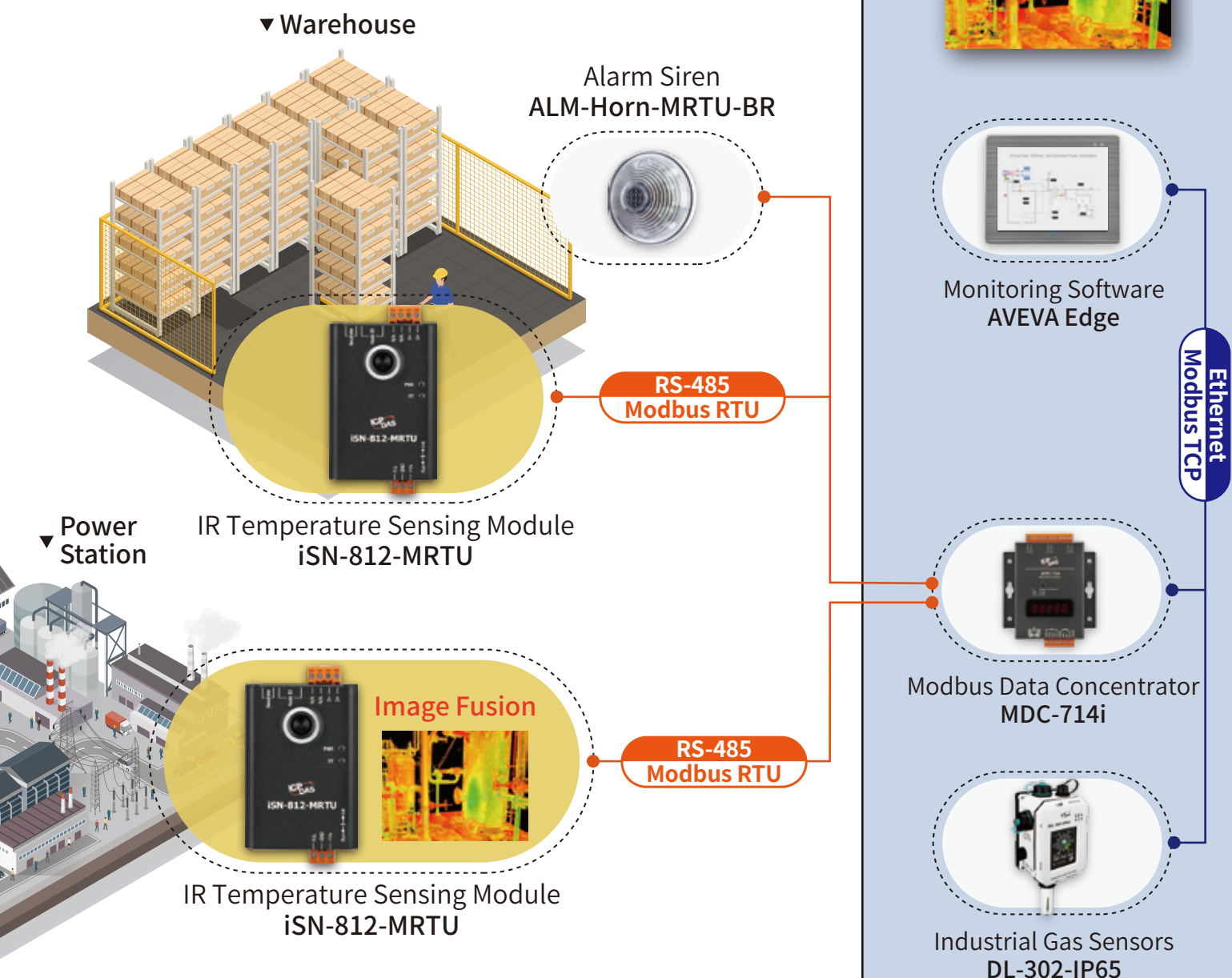
Smart Power Meter
PM-2133D-MTCP



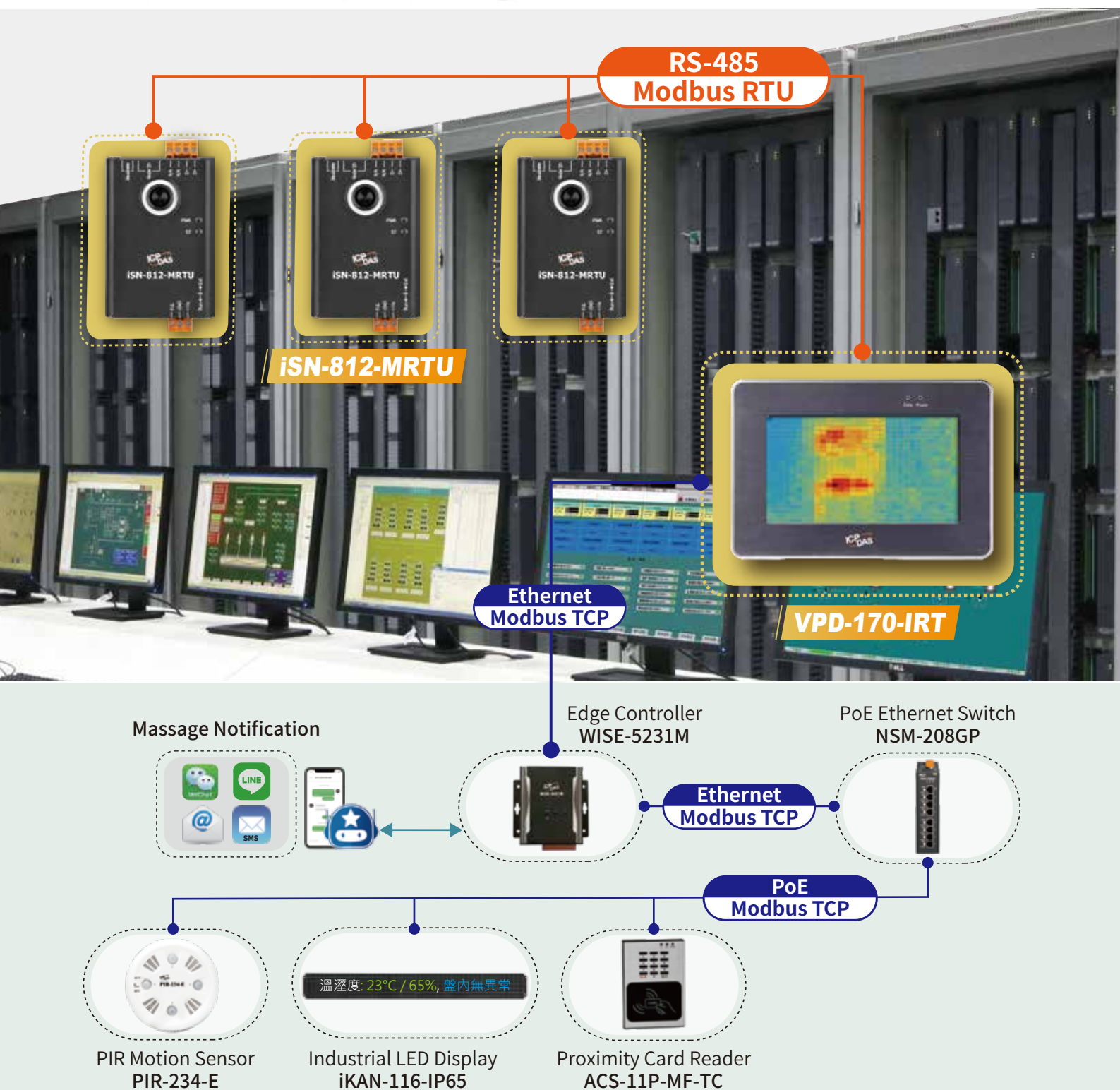
» Warehouse - Safety & Protection

The stability of raw materials and logistics is closely related to product quality, and it is crucial to ensure the safety of the storage environment (low temperature, flammable materials, etc.).

- iSN-812-MRTU monitors warehouse and conveyor temperatures for secure raw material management.
- DL-302-IP65 performs environmental harmful gas detection.
- iSOS-100 emergency call links with the iSOS-ALM-Horn siren.



Control Box Temperature and Environment Monitoring



As functionality increased, machines and wiring inside the distribution cabinet have become more complex. Inconsistent inspections raise accident risks. To ensure safety and manage the machine room environment, IoT devices are used for real-time monitoring with zero downtime.

- **Distribution cabinet Monitoring :**

The IRT sensor continuously monitors the temperature inside the case in a noncontact, large-area manner.

- **Labor Management :**

Card swiping check-in and human body movement detection improve labor efficiency.

- **Real-time Information :**

Real-time information and abnormal event notification.

Switchboard Safety Monitoring



In order to avoid heat disasters and downtime of machines caused by poor contact, aging, and damaged parts in electrical control board. ICPDAS provides in-panel monitoring, including temperature and power information collection, analysis, and alarms to avoid errors and effectively improve quality and utilization rate.

- **Temperature Monitoring:**
Large-area temperature monitoring and real-time image transmission.
- **Power Management :**
Data tracking and carbon emission basic data analysis.
- **Cloud Application :**
IIoT communication server, combined with cloud and abnormal notification.

紅外線溫度感測模組

產品名稱



**iSN-811C-MTCP
(含攝影機)**



iSN-812-MRTU

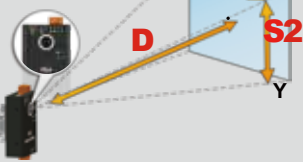


iSN-812-MTCP



iSN-813-MTCP

紅外線感測器

像素 (Pixel)		64 (8 x 8)		768 (32 x 24)		4800 (60 x 80)	
溫度量測範圍		-50℃ ~ 250℃		-40℃ ~ 300℃		-20℃ ~ 300℃	
量測準確率/解析度		±5℃ Max. / 0.1℃					
有效感測距離		≤ 1 M		≤ 2 M		≤ 6 M	
	X	60° (D:S1=1:1.15)		110° (D:S1=1:2.86)		90° (D:S1=1:2)	
	Y	60° (D:S2=1:1.15)		75° (D:S2=1:1.53)		67° (D:S2=1:1.32)	
	D	0.1 M	1 M	0.1 M	2 M	0.1 M	6 M
	S1	0.115 M	1.15 M	0.286 M	5.72 M	0.2 M	12 M
	S2	0.115 M	1.15 M	0.153 M	3.06 M	0.132 M	7.92 M

動態影像 (攝影機)

解析度 (Pixel)	QVGA (320 x 240)	--
補光燈	有	--

通訊介面

通訊埠	Ethernet, PoE	RS-485	Ethernet, PoE
通訊協定	Modbus TCP / MQTT / RESTful	Modbus RTU	Modbus TCP / MQTT / RESTful

紅外線溫度資料集中器

VPD-170-IRT

- ◆ 高解析度彩色觸控螢幕，提供熱顯像和溫度警報功能。
- ◆ 進行 VPD-170-IRT 與 iSN-81x 系列模組的各項功能設定。
- ◆ 連接多台 iSN-81x-MRTU / iSN-81x-MTCP 模組，支援溫度門檻值設定。
- ◆ 支援 Modbus TCP Slave，可和遠端監控主機 (SCADA) 整合。

顯示器類型	7" LCD (800 x 480) 觸控螢幕	繼電器輸出	9 x Single Relay (Form A)
通訊介面	RS-232 x 1 / RS-485 x 2 / Ethernet x 1	蜂鳴器/重置按鈕	有
通訊協定	Modbus RTU / Modbus TCP	防水防塵等級	前面板：NEMA 4 / IP65



泓格科技股份有限公司 ICP DAS CO., LTD.

台灣總公司 (新竹)

+886-3-597-3366

泓格科技大陸總部(上海)

021-62471722/23/24



www.icpdas.com