

# PnP Driver Installation

---

## Plug & Play Driver Installation Manual For AD/DA, DI/DO Cards

[For Windows 95/98/2000]

### Warranty

All products manufactured by ICP DAS are warranted against defective materials for a period of one year from the date of delivery to the original purchaser.

### Warning

ICP DAS assumes no liability for damage consequent to the use of this product. ICP DAS reserves the right to change this manual at any time without notice. The information furnished by ICP DAS is believed to be accurate and reliable. However, ICP DAS assumes no responsibility for its use, or for any infringements of patents or other rights of third parties resulting from its use.

### Copyright

Copyright 2000 by ICP DAS. All rights are reserved.

### Trademark

The names used for identification only maybe registered trademarks of their respective companies.

### License

The user can use and backup this software **on a single machine**. The user may not reproduce, transfer or distribute this software, or any copy, in whole or in part.

**Table of contents**

1 Introduction .....3

2 PCI PnP for Win95/98 .....4

3 PCI PnP for Win2000 .....11

4 ISA PnP for Win2000 .....15

# 1 Introduction

This manual describes how to install the Plug and Play Information file (PnP Driver) of AD/DA, DI/DO add-on cards (PCI and ISA bus) on the Windows 95/98/2000.

All of the products (PCI bus) has it's own PnP information file (PnP Driver). [The Windows 95/98 and Windows 2000 will refers this information file to allocate the resource for the device. Thus, the user must install the correct information file \(PnP Driver\) for its work correctly.](#) All of the PnP drivers have the similar steps to install. And this manual uses the PCI-TMC12 or PIO series card to be the example. For other PCI cards, please refer to these steps and select the appropriate PnP Driver to install.

To find out the PnP Information file (PnP Driver) for the specified device, please refer to the file "Readme.TXT" which is pack with the Development Toolkit for the specified device.

For example:

```
|--\PioDio
    |--\Win95
    |    |--\Inf          → PnP Driver
    |    .....
    |    .....
    |
    |--\Win2000
    |    |--\Inf          → PnP Driver
```

## 2 PCI PnP for Win95/98

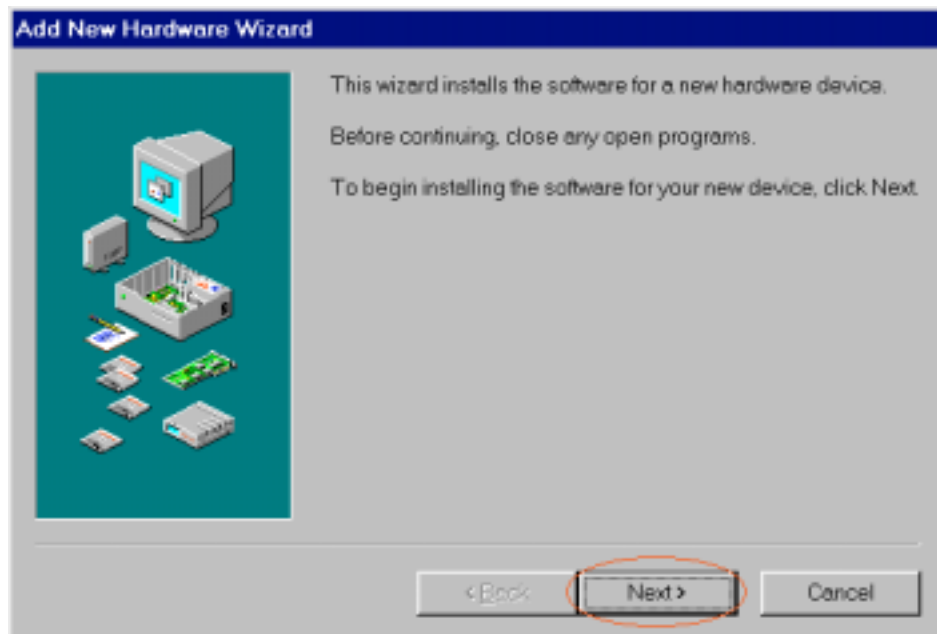
Step 2-1. Power off your computer.

Step 2-2. Plug the PCI DAQ card on main-board.

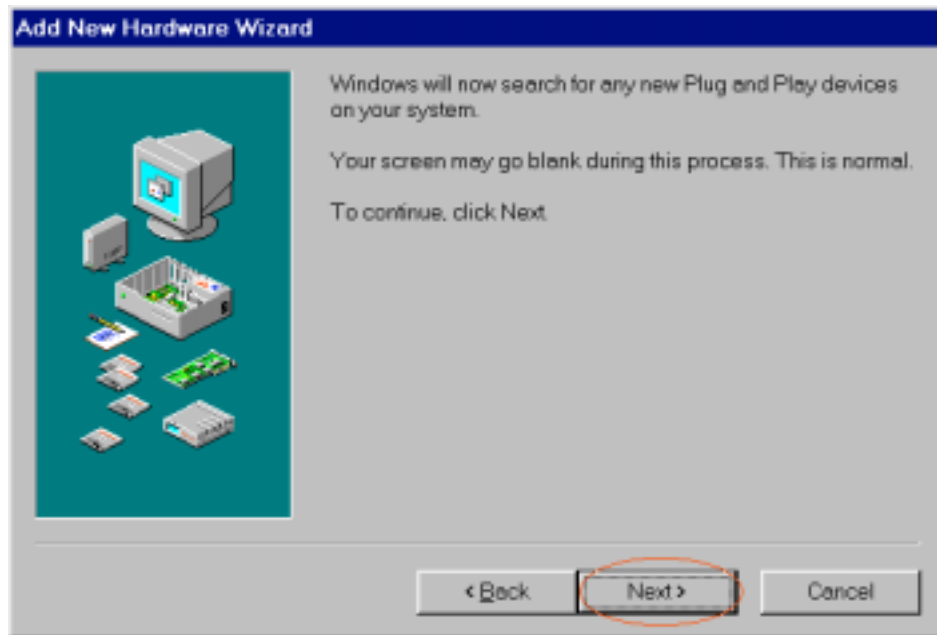
Step 2-3. Power on your computer.

Step 2-4. The “Add New Hardware Wizard” window pops up. The user also can launch the window “Add New Hardware Wizard” by click the icon “Add New Hardware” from the folder “Control Panel”.

Step 2-5. Click the “Next >” button.



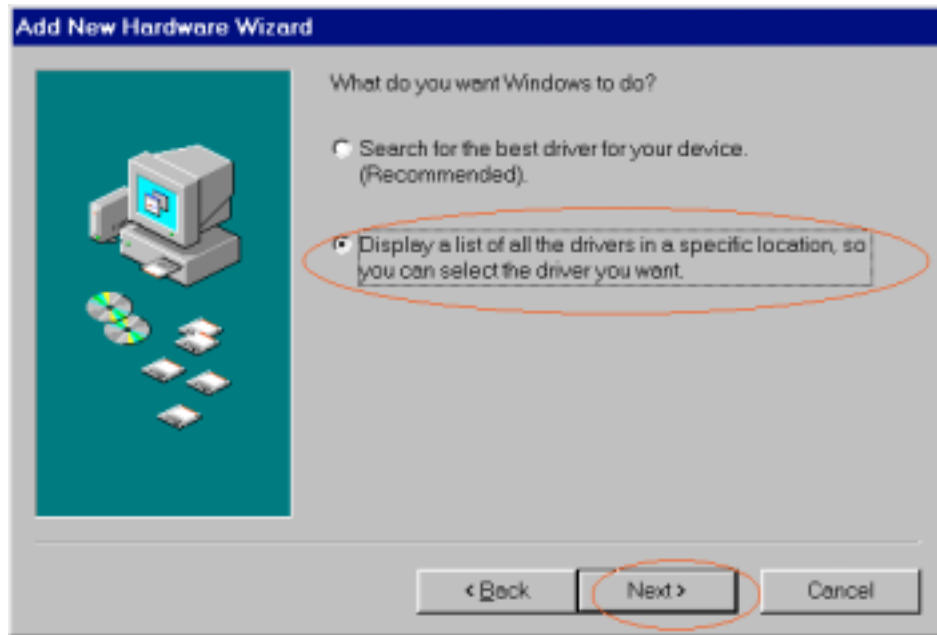
Step 2-6. Click the “Next >” button.



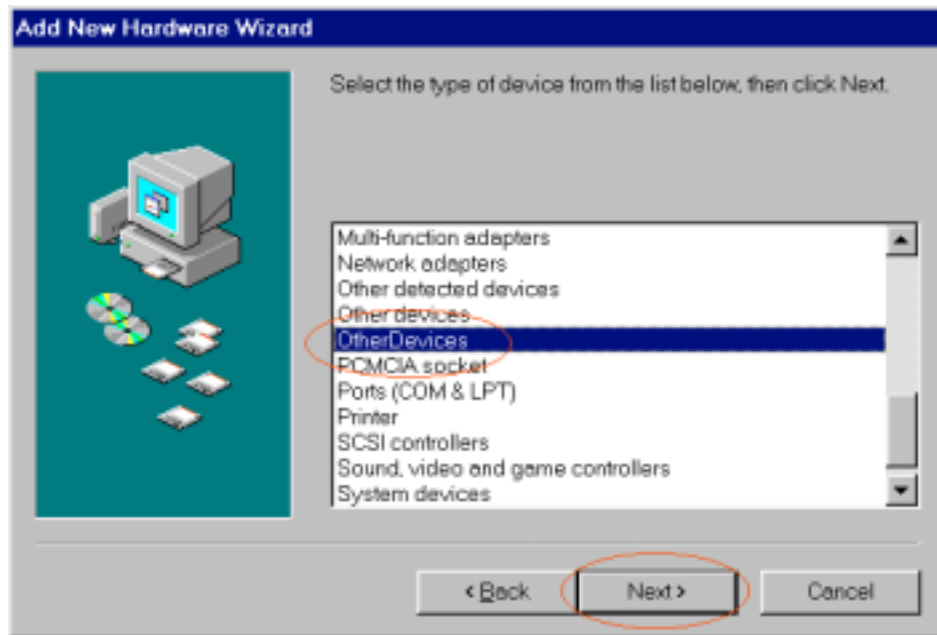
Step 2-7. Click the “Next >” button.



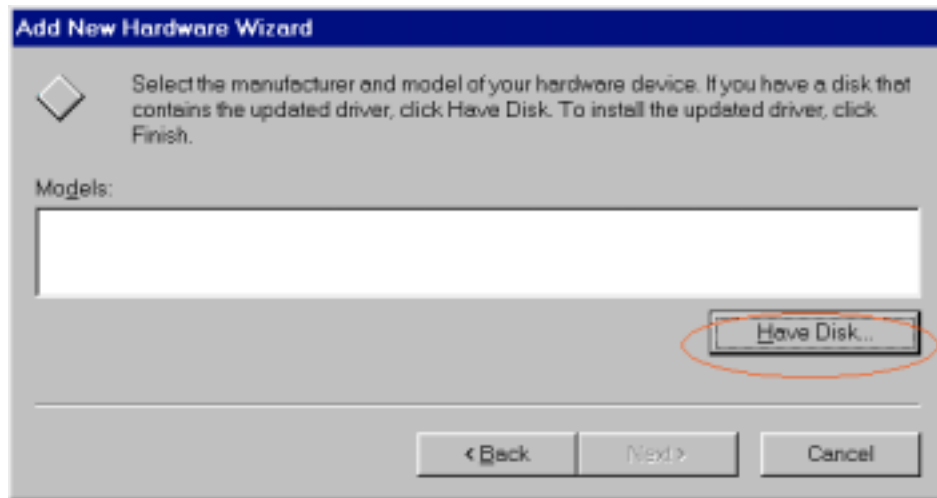
Step 2-8. Select the second item and then click the “Next >” button.



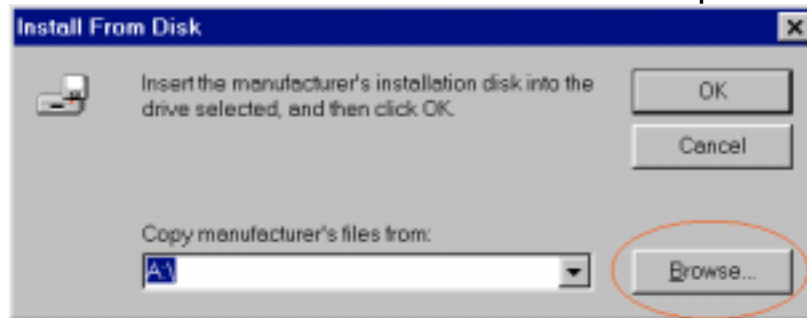
Step 2-9. Select the item “OtherDevices” and click “Next >” button.



Step 2-10. Click the “**Have Disk...**” button.

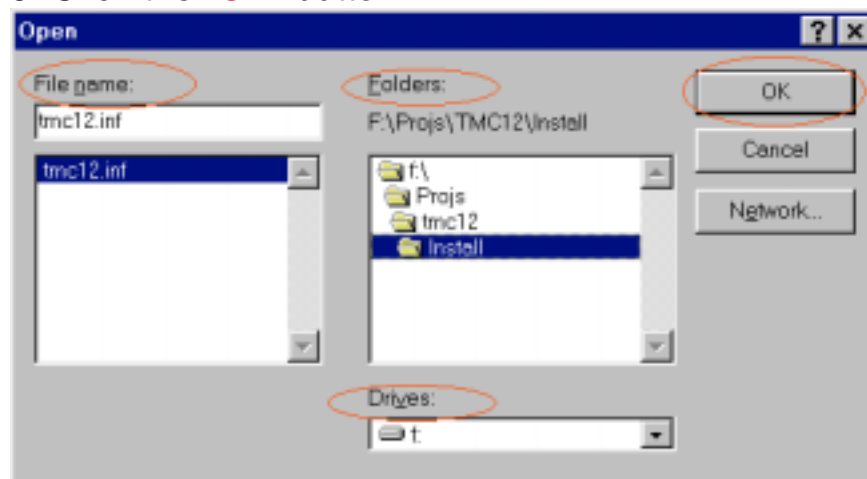


Step 2-11. Click the button “**Browse...**” to select the path of driver.



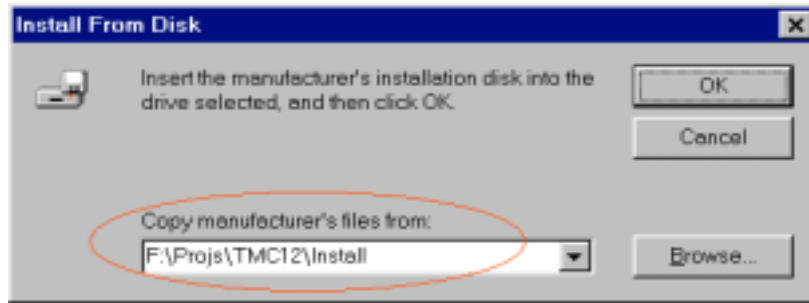
Step 2-12. Change the “**Drives**”, “**Folders**” and **select the correct .INF file**. These are according to the device driver that you want to use.

Step 2-13. Click the “**OK**” button.



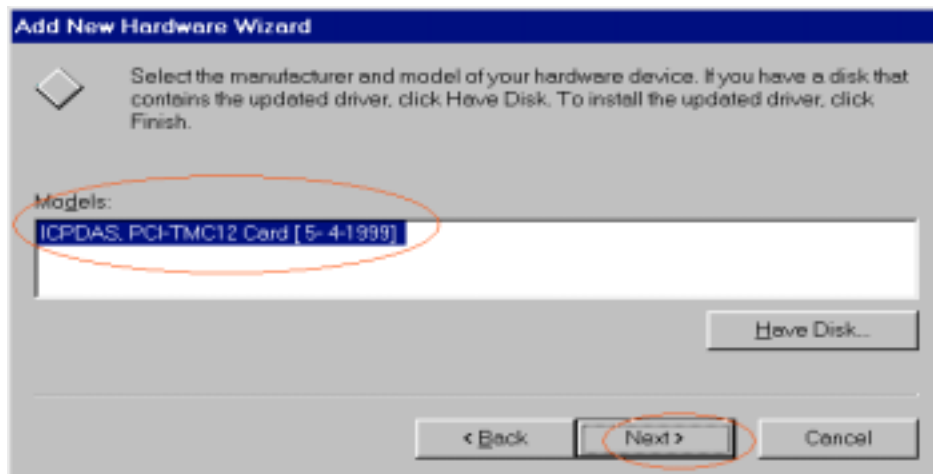
Step 2-14. Make sure that if the path is correct for the PCI DAQ card.

Step 2-15. Click the “OK” button to next step.



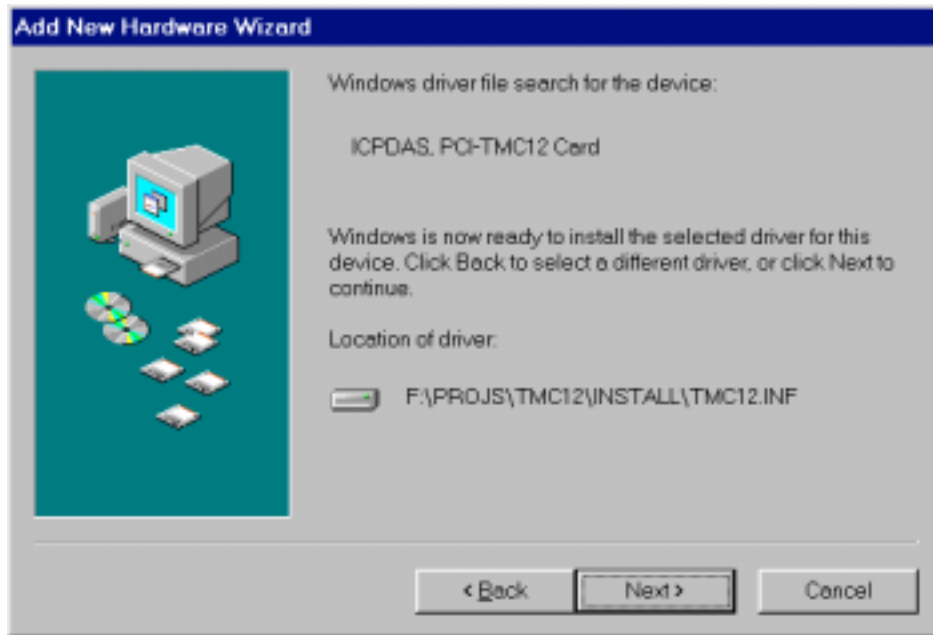
Step 2-16. Select the correct driver (Models) for the PCI DAQ card.

Step 2-17. Click the “Next >” button to next step.

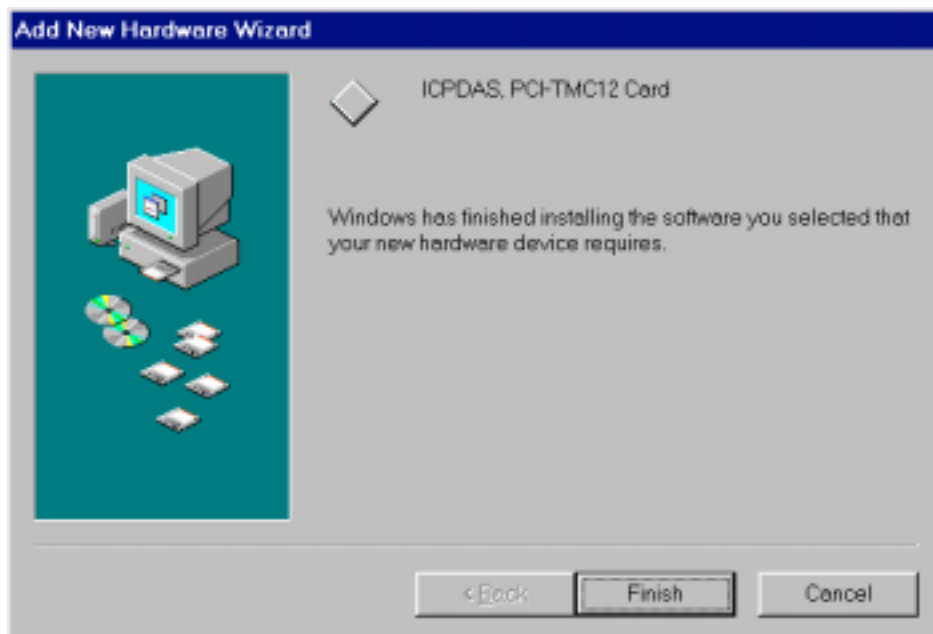




Step 2-18. Click the “Next >” button.

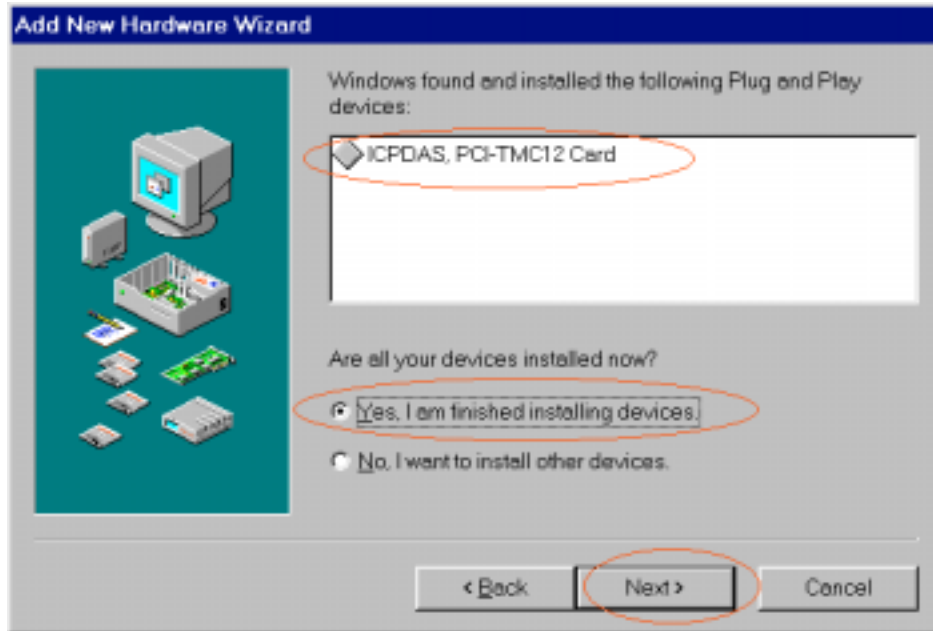


Step 2-19. Click the “Finish” button.



Step 2-20. Select the item “**Yes, I am finished installing devices.**”.

Step 2-21. Click the “**Next >**” button.



Step 2-22. Click the “**Finish**” button.



## 3 PCI PnP for Win2000

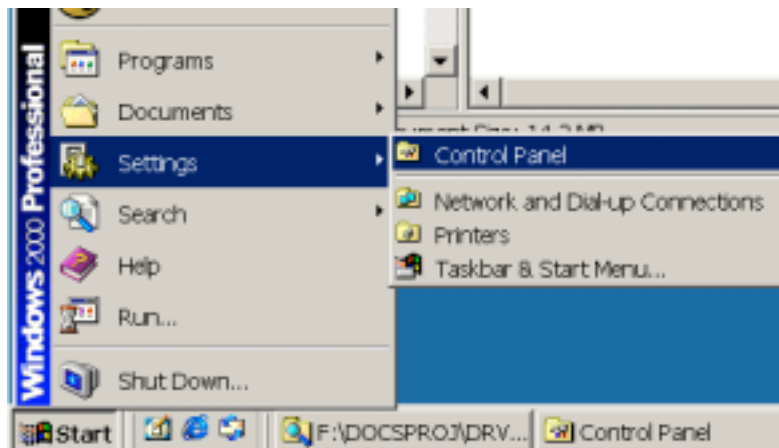
Step 3-1. Power off your computer.

Step 3-2. Plug the PCI DAQ card on main-board.

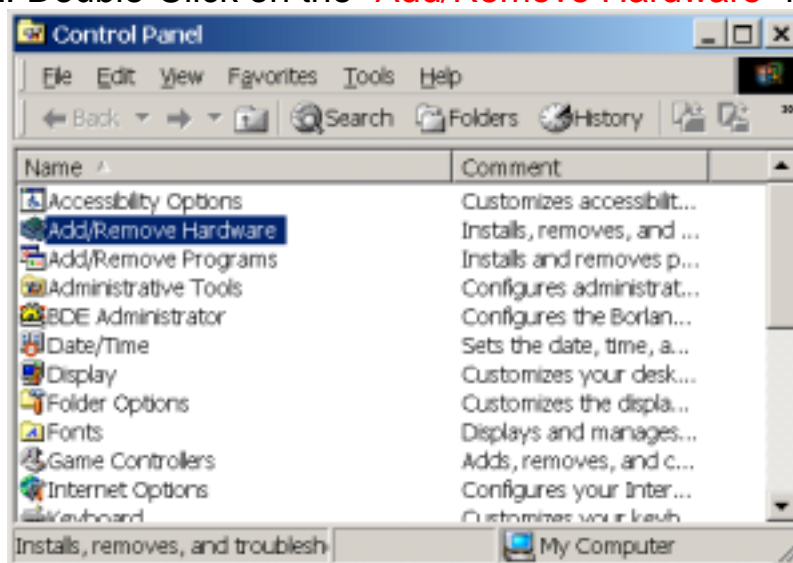
Step 3-3. Power on your computer.

Step 3-4. The “Add New Hardware Wizard” window pops up.

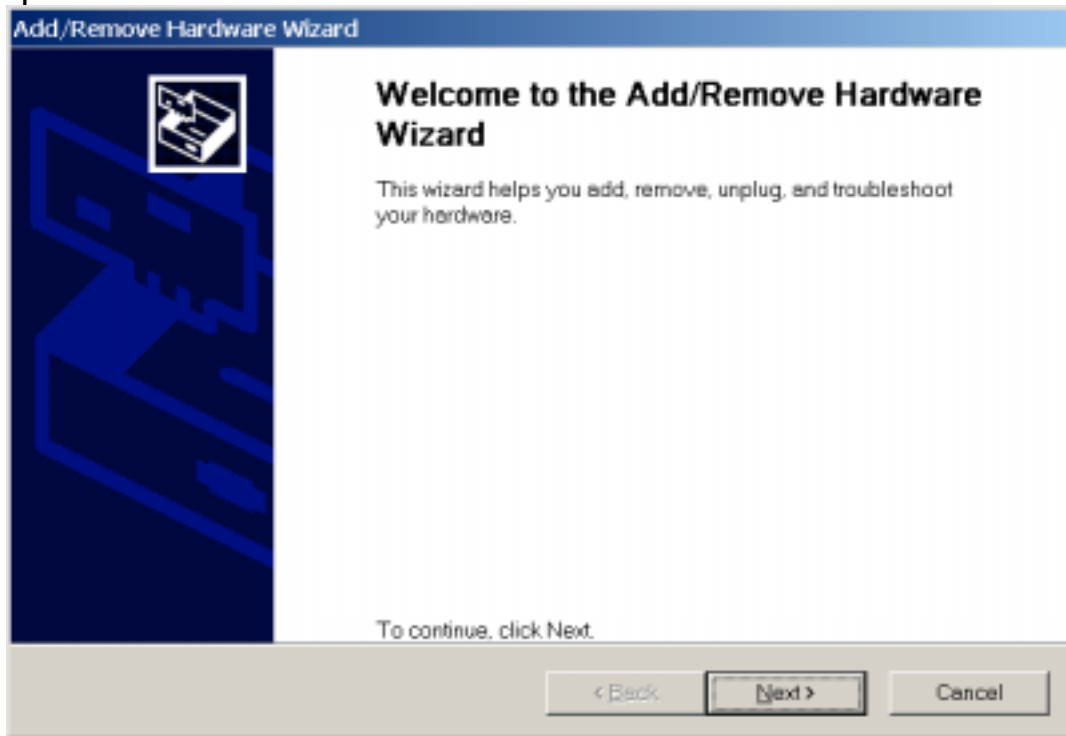
Step 3-4-1. The user also can launch the window “Add New Hardware Wizard” by click “Start / Settings / Control Panel”.



Step 3-4-2. Double-Click on the “Add/Remove Hardware” item.

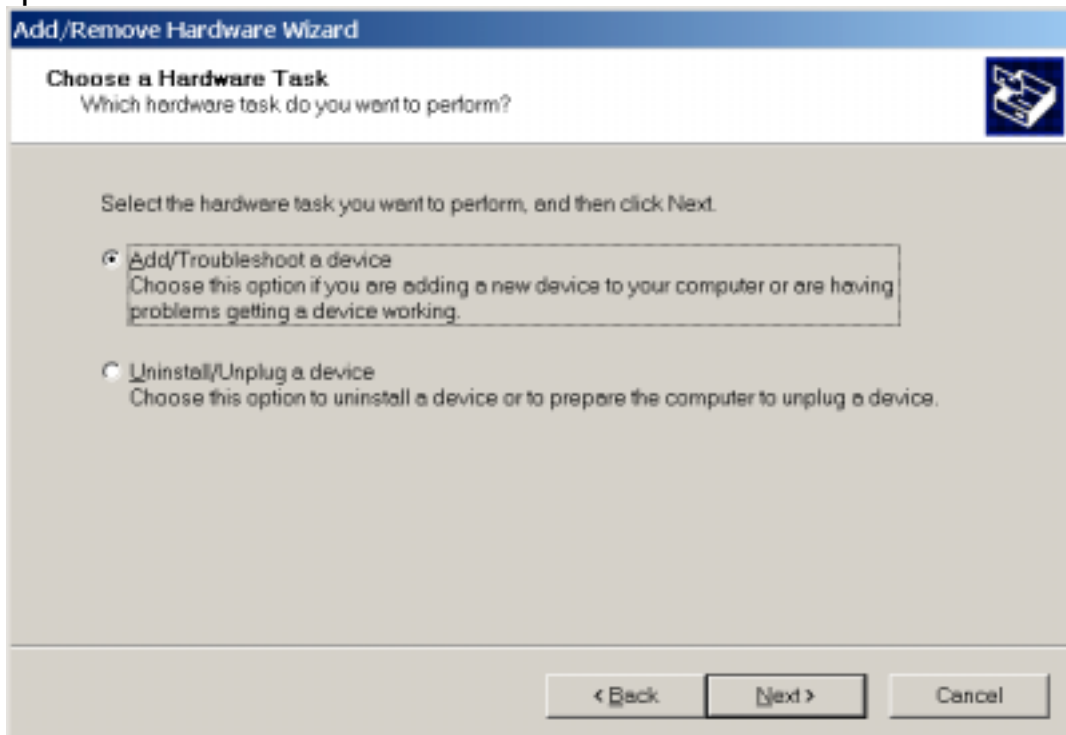


Step 3-5. Click “**Next >**” button.



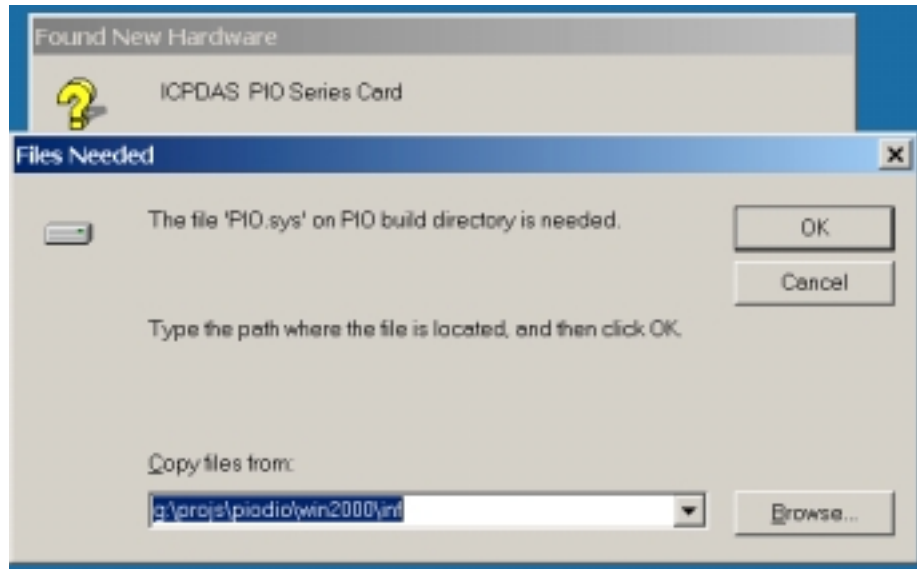
Step 3-6. Select the “**Add/Troubleshoot a device**” item.

Step 3-7. Click the “**Next >**” button.

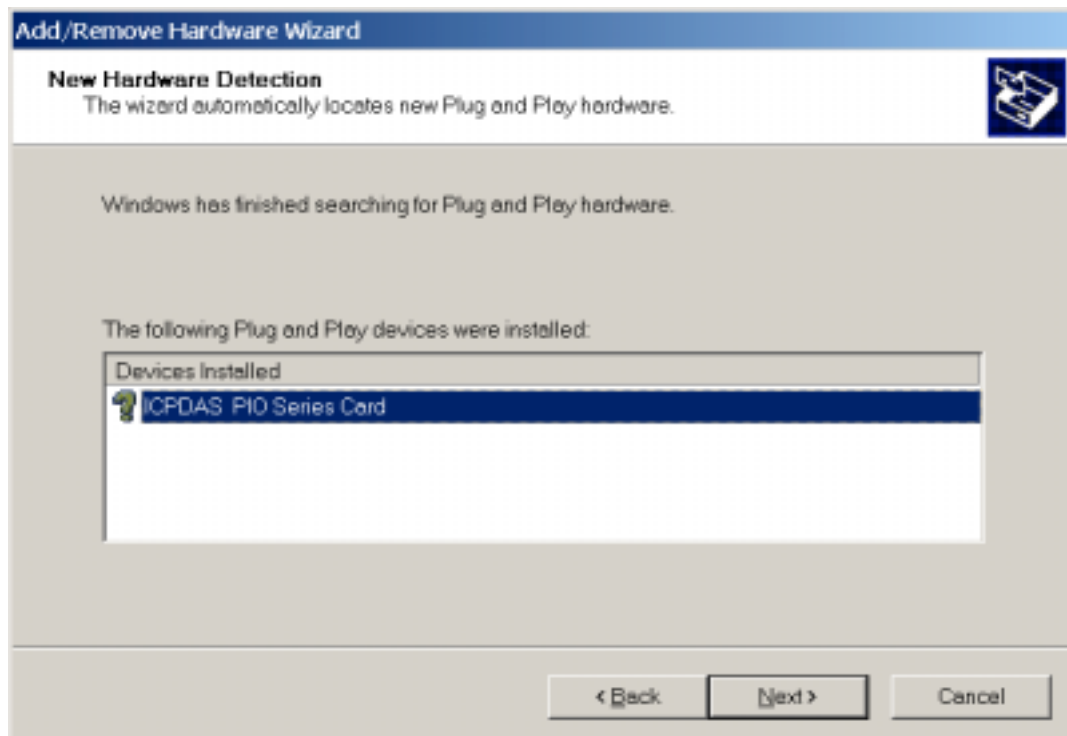


Step 3-8. Click the “**Browse...**” button to select the proper directory which stores the PnP Information file.

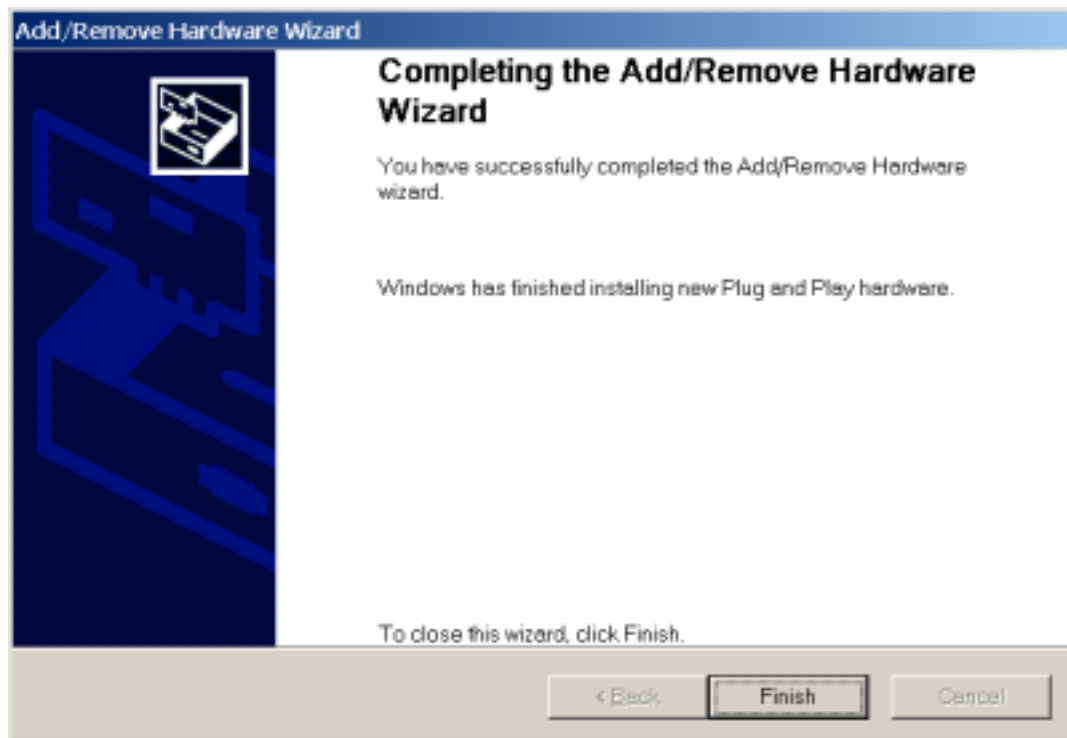
Step 3-9. Click the “**OK**” button.



Step 3-10. Select the proper device and click “**Next >**”.



Step 3-11. Click “**Finish**” to finish this process.



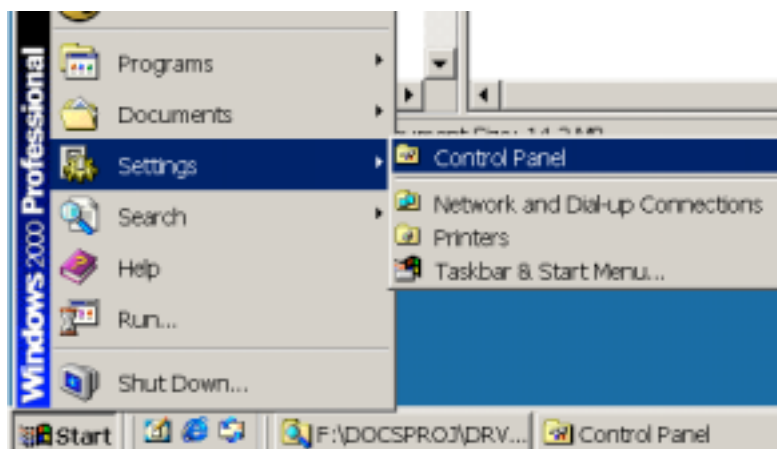
## 4 ISA PnP for Win2000

The Windows 2000 supports the Plug & Play mechanism to allocate the resources. But the hardware of ISA AD/DA and DI/DO card not supports the PnP. In this case, the Windows 2000 could not detects the ISA AD/DA and DI/DO card automatically.

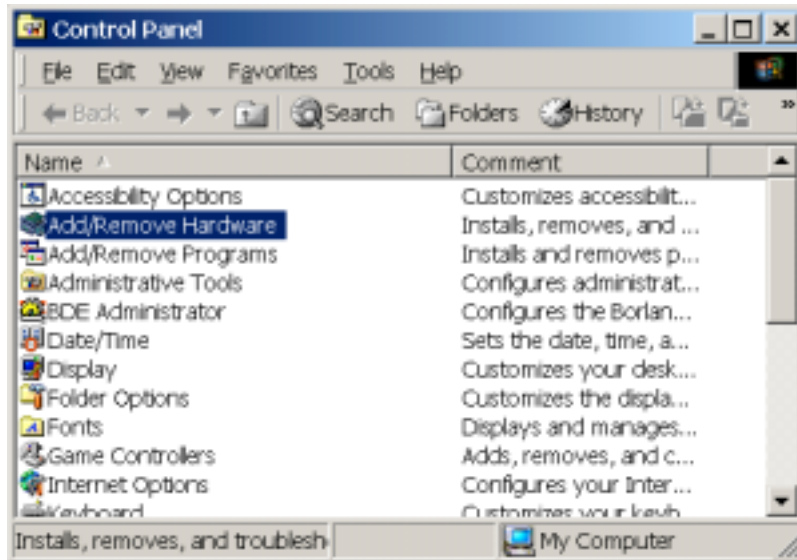
For allocate resources correctly, we provide a PnP information file (\*.INF) for the ISA AD/DA and DI/DO card. The ISA AD/DA and DI/DO card use the information file to request the resources from the Windows 2000.

It is recommended to install the PnP information file firstly. And then setting the requested resource correctly. After the resources had been allocated, then setting the jumper or switch of the ISA AD/DA and DI/DO card to match the allocated resources.

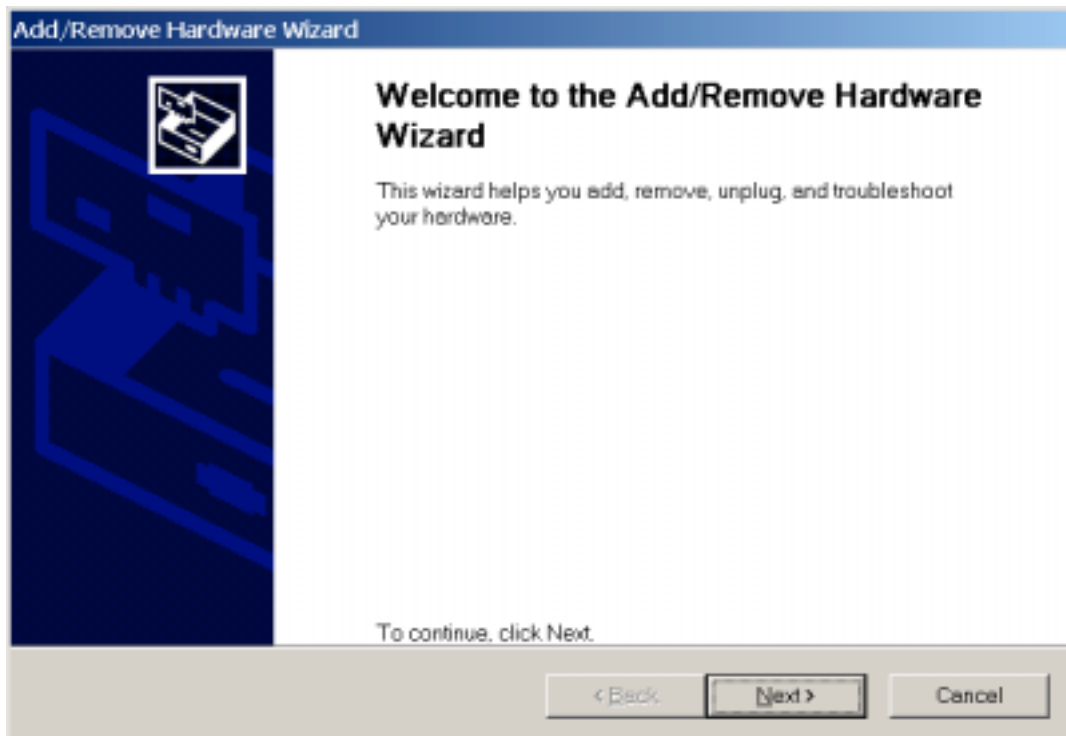
Step 4-1. Open the “**Control Panel**” by click the item “Start / Settings / Control Panel”.



Step 4-2. Double-click the item “Add/Remove Hardware”.

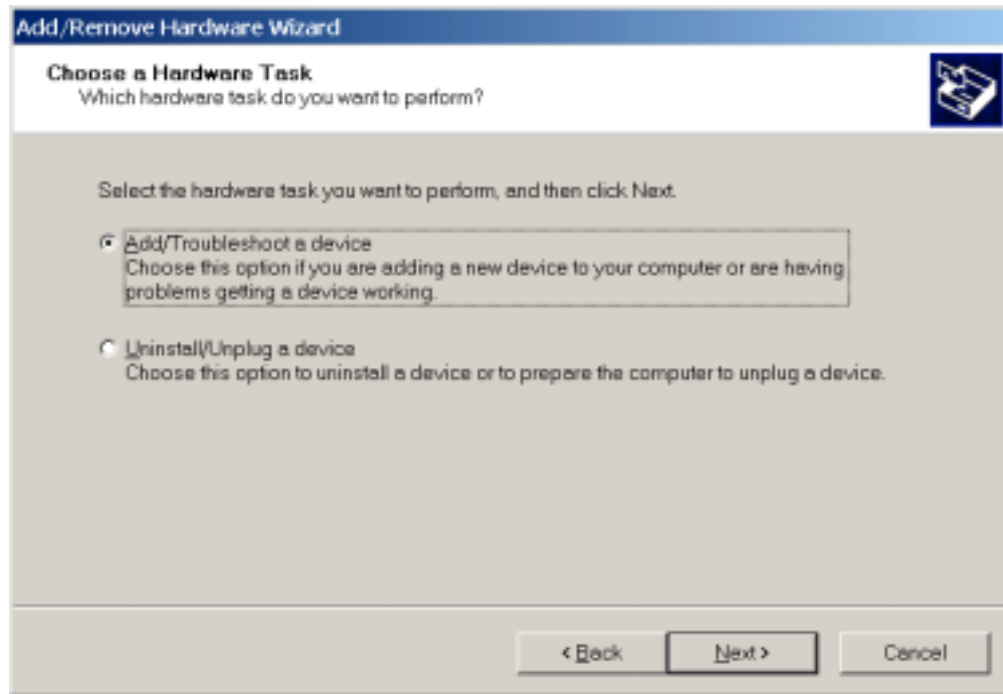


Step 4-3. Click the “Next >” button.

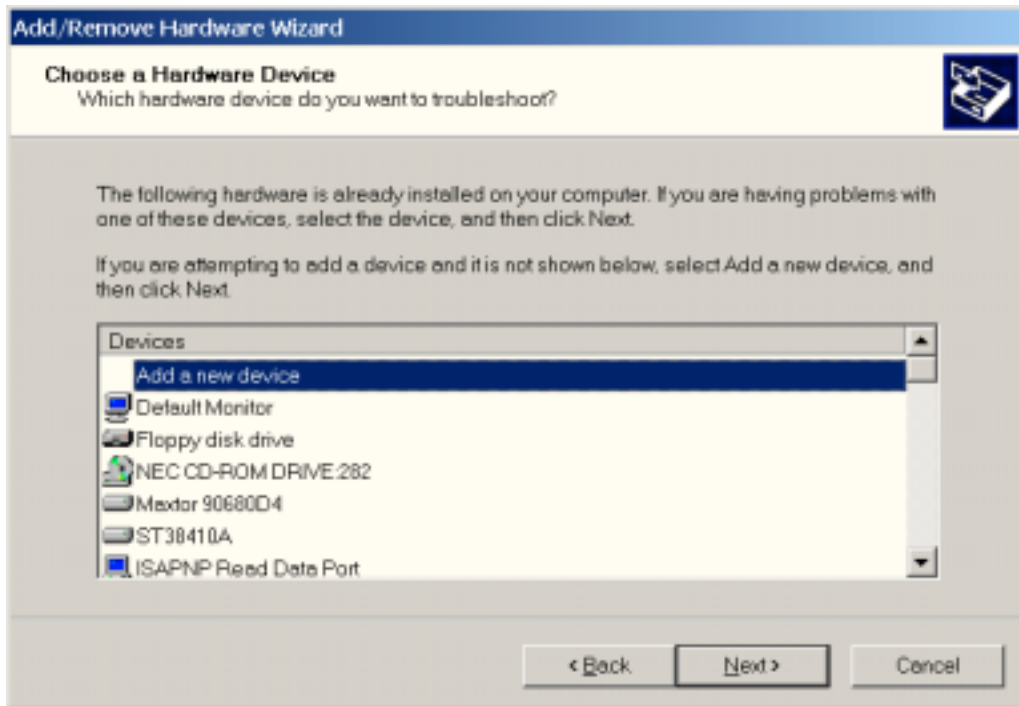




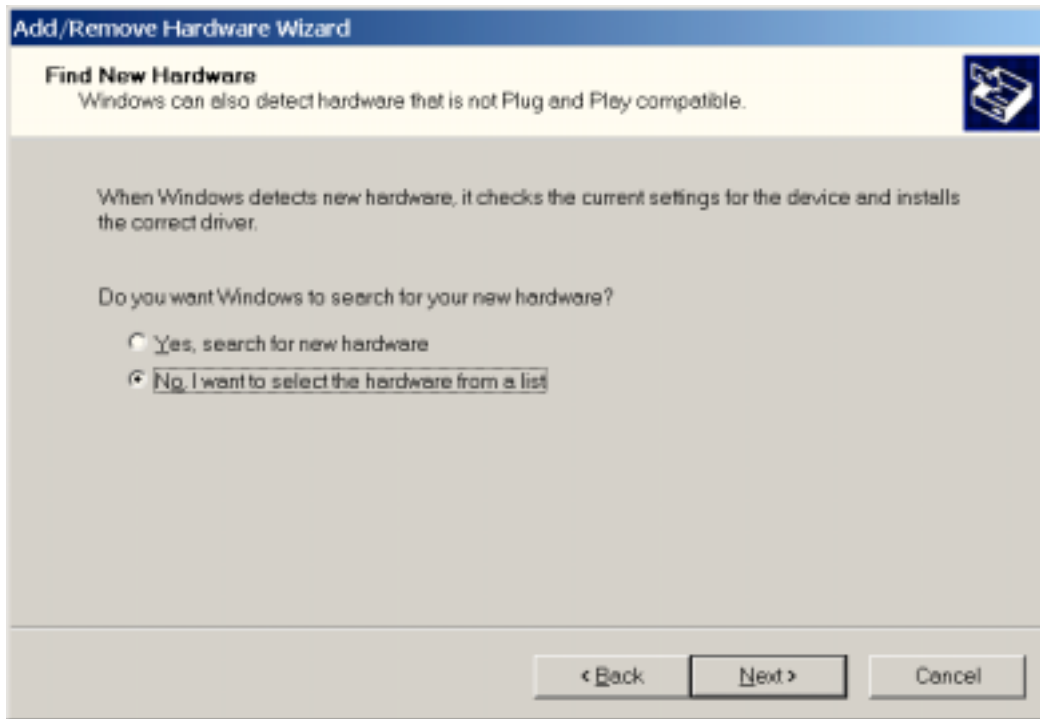
Step 4-4. Select the item “Add/Troubleshoot a device” and click the “Next >” button.



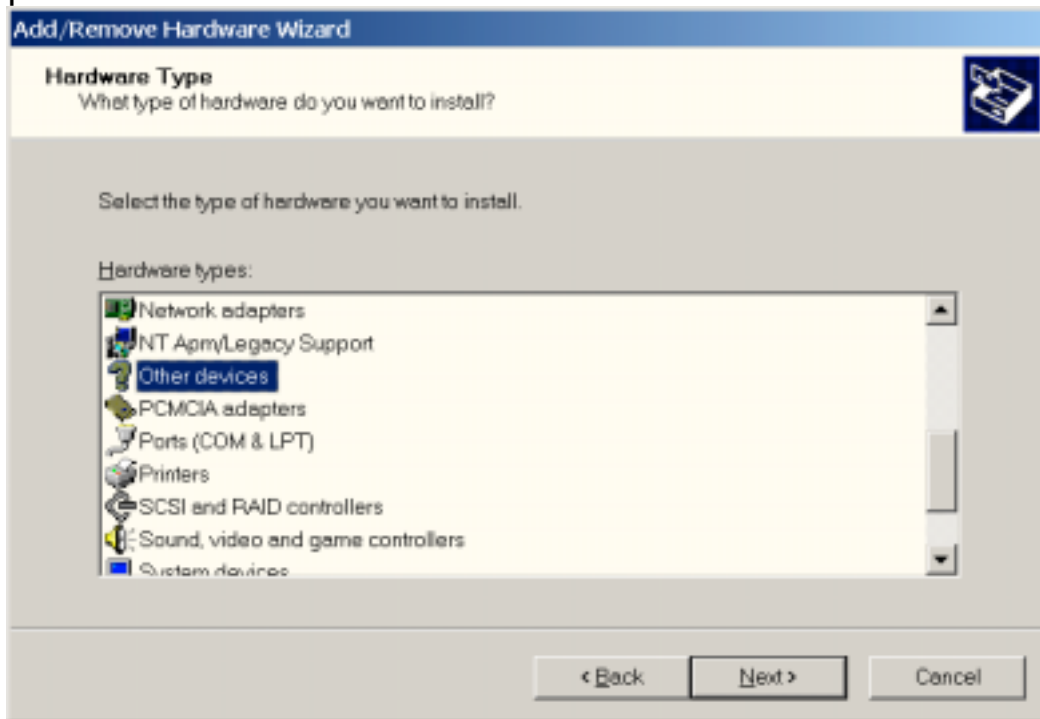
Step 4-5. Select the item “Add a new device” and click the “Next >” button.



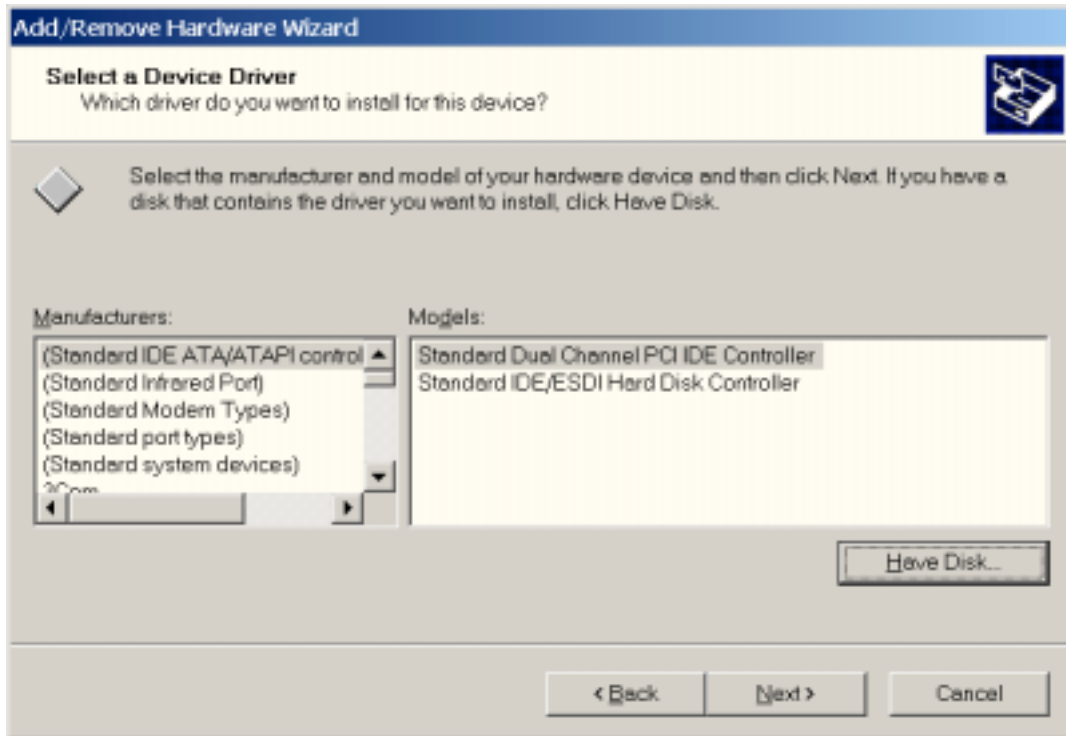
Step 4-6. Select the item “**No, I want to select the hardware from a list**” and click the “**Next >**” button.



Step 4-7. Select the item “**Other device**” and click the “**Next >**” button.



Step 4-8. Click the “**Have Disk...**” button.



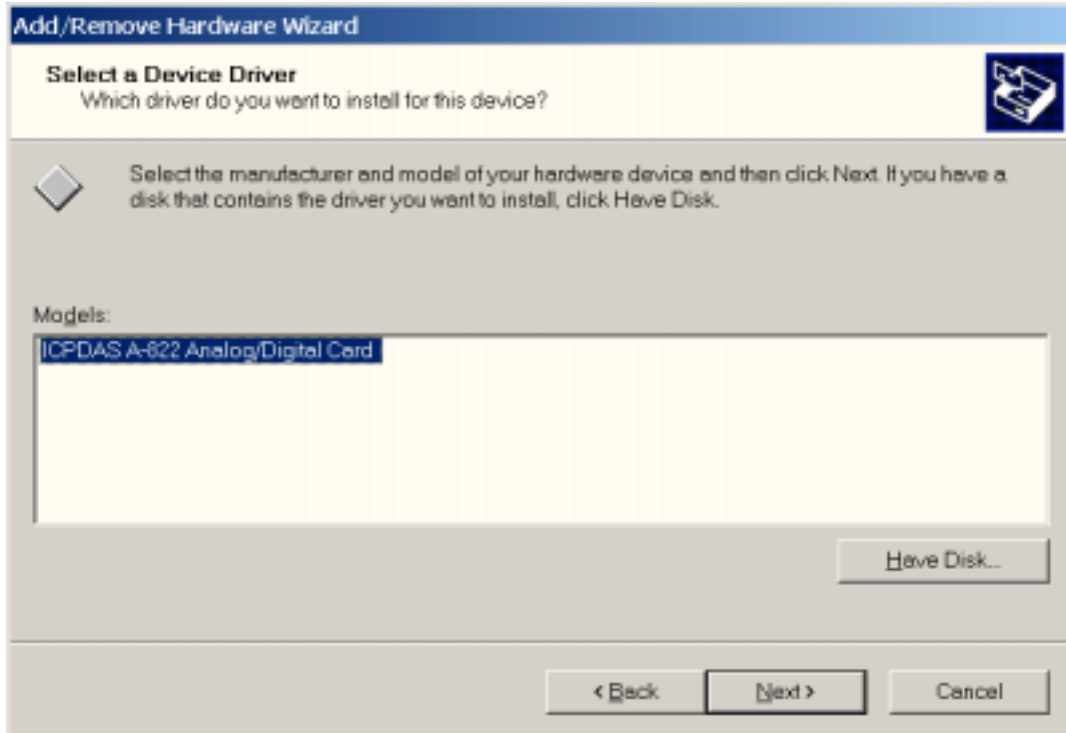
Step 4-9. Click the “**Browse...**” button to select the correct PnP information file (\*.inf) according to your device.

Step 4-10. Click the “**OK**” button.



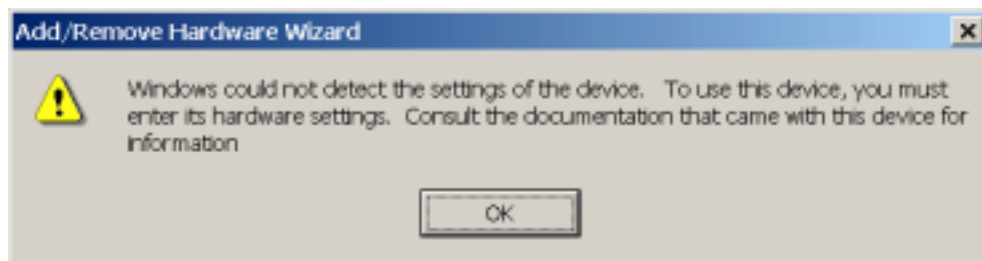
Step 4-11. Select the correct device from the “**Models:**” listbox.

Step 4-12. Click the “**Next >**” button.

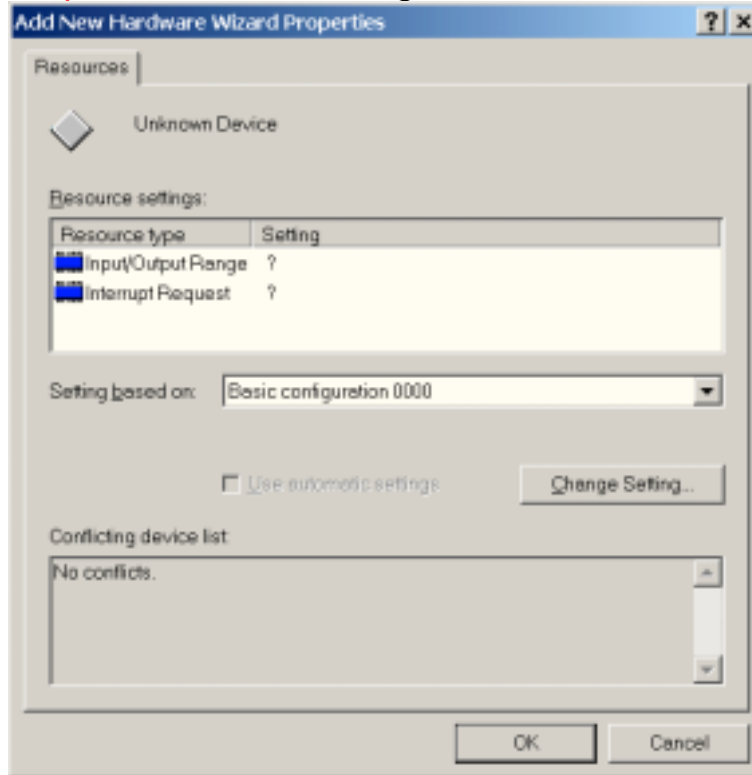


Step 4-13. The window “**Add/Remove Hardware Wizard**” pops up and says “**Windows Could not detect the settings of the device. To use this device, you must enter its hardware settings. Consult the documentation that came with this device for information.**”

Step 4-14. Click the “**OK**” button to enter the device’s settings.

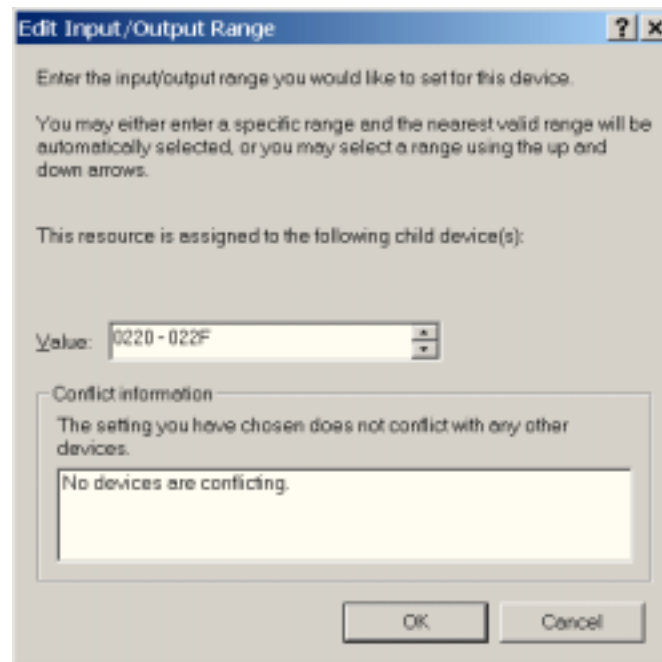


Step 4-15. Double-click one the “**Input/Output Range**” and “**Interrupt Request**” items to setting the device’s resource.



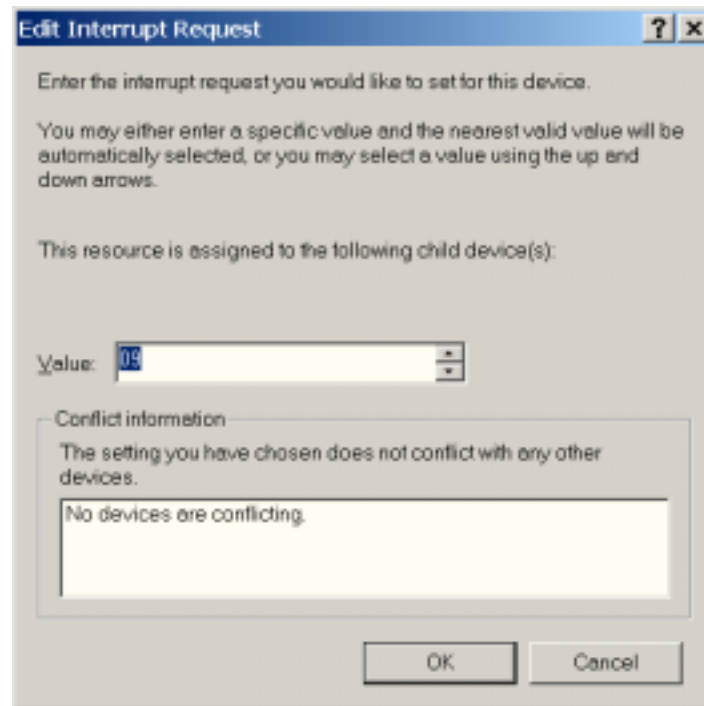
Step 4-16. Choose a “**Value:**” for the “**Input/Output Range**”, which couldn’t conflict with other devices.

Step 4-17. Click the “**OK**” button.

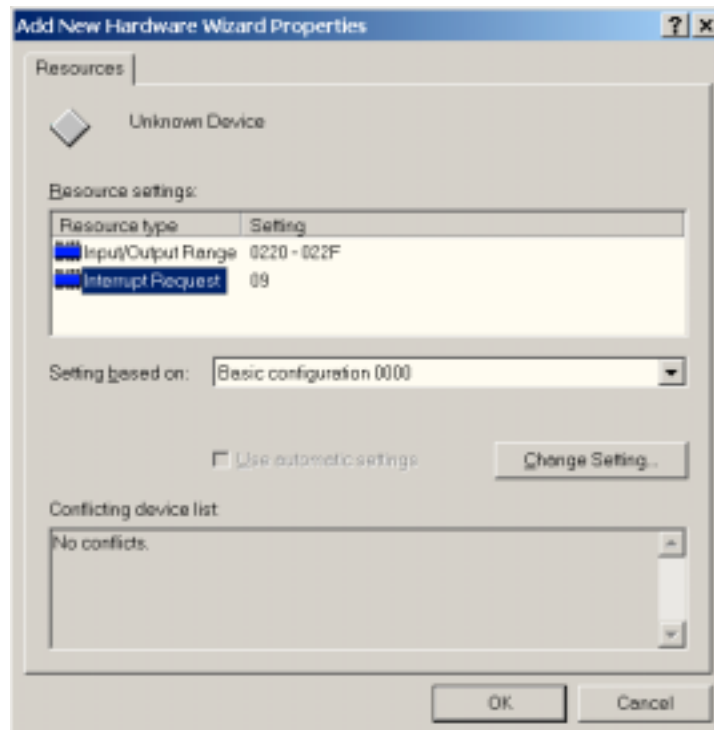


Step 4-18. Choose a “**Value:**” for the “**Interrupt Request**”, which couldn’t conflict with other devices.

Step 4-19. Click the “**OK**” button.

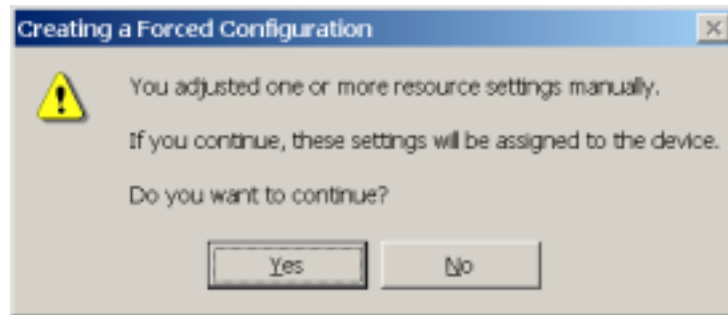


Step 4-20. Click the “**OK**” button.

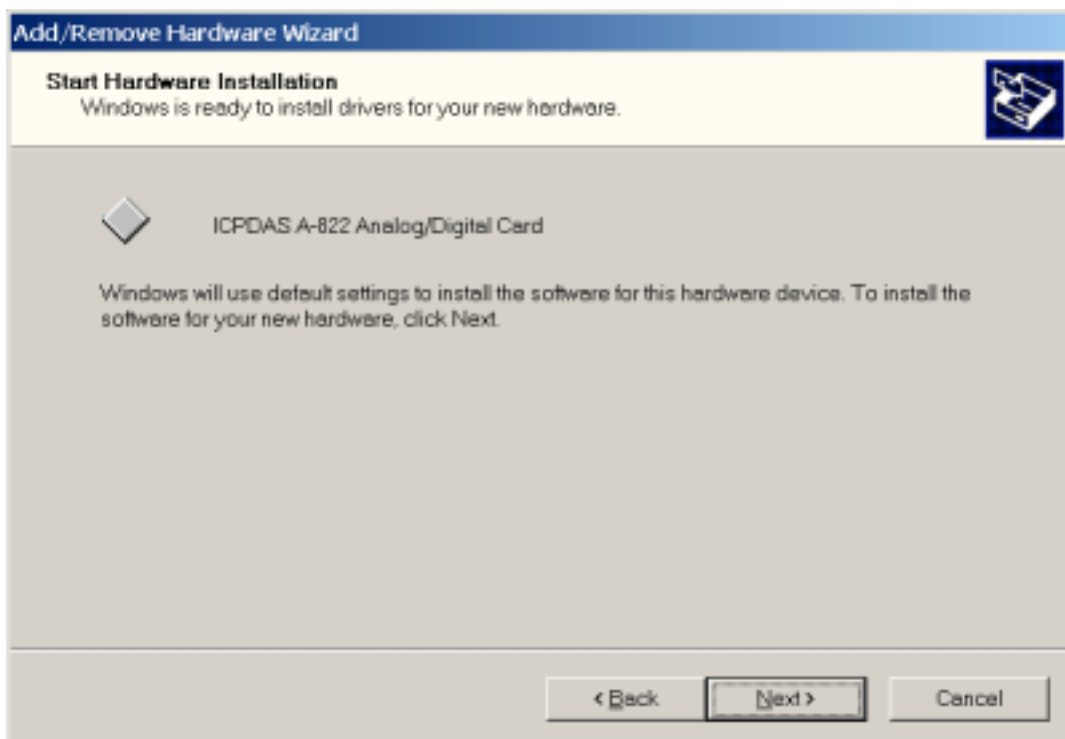


Step 4-21. The “**Creating a Forced Configuration**” window pops up and says : “You adjusted one or more resource settings manually. If you continue, these settings will be assigned to the device. Do you want to continue?”.

Step 4-22. Click the “**Yes**” button.



Step 4-23. Click the “**Next >**” button.

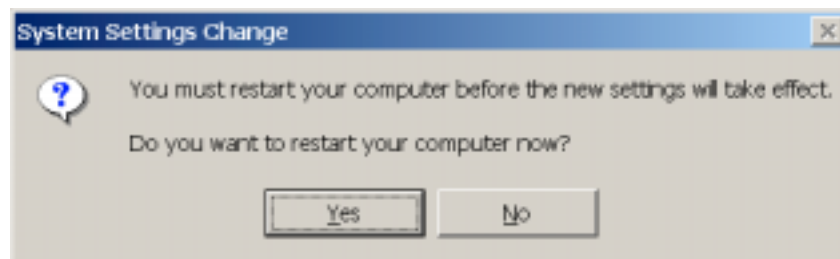


Step 4-24. Click the “**Finish**” button.



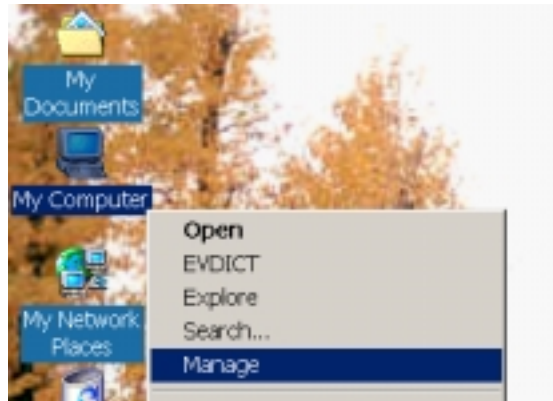
Step 4-25. The “**System Settings Change**” window pops up and says :  
“You must restart your computer before the new settings will take effect. Do you want to restart your computer now?”.

Step 4-26. Click the “**Yes**” button to restart your computer.





Step 4-27. Right-Click the “**My Computer**” icon and click the menu item “**Manage**” to launch the “**Computer Management**”.



Step 4-28. Click the “**Device Manager**” and the user can see that the device had been added.

