

---

## Chapter 3: Setting Up A Web HMI Demo

---

The VP-2xW7 is the abbreviation of the VP-25W7 and VP-23W7.  
The VP-2xW6 is the abbreviation of the VP-25W6 and VP-23W6.  
The VH-2xW7 is the abbreviation of the VH-25W7 and VH-23W7.  
The VH-2xW6 is the abbreviation of the VH-25W6 and VH-23W6.

### Important:

**1. VP-25W7, VP-23W7, VP-25W6 and VP-23W6 supports only High profile I-8K and I-87K I/O cards in its slot 0 to 2. Please refer to VP-25W7/23W7 CD-ROM:**

**\napdos\isagraf\vp-25w7-23w7\english-manu\ “vp-25w7-23w7-datasheet.pdf”**

**2.** Please always set a **fixed IP** address to the VP-2xW7, VP-2xW6, VH-2xW7 and VH-2xW6. (No DHCP). Recommend to use the NS-205 / NS-208 Industrial Ethernet Switch for them.

### 3.1: Web Demo List

---

The Web page location:

VP-25W7/23W7 CD-ROM: \napdos\isagraf\vp-25w7-23w7\vp-webhmi-demo\

The respective ISaGRAF project location:

VP-25W7/23W7 CD-ROM: \napdos\isagraf\vp-25w7-23w7\demo\

Demo list:

Name	Description	IO board
sample	A Web HMI sample	No I/O board
example1	A simple example listed in Chapter 4	slot 0: I-87055W
vphmi_01	Display controller's date & time	No I/O board
vphmi_02	DI & DO demo	slot 0: I-87055W
vphmi_03	Read / Write Long, float & Timer value	No I/O board
vphmi_04	Read / Write controller's String	No I/O board
vphmi_05	Multi-Pages demo Page menu is on the Left	slot 0: I-87055W
vphmi_05a	Multi-Pages demo Page menu is on the Top	slot 0: I-87055W
vphmi_06	AIO demo, scaling is in ISaGRAF	slot 1: I-87024W slot 2: I-8017HW
vphmi_07	AIO demo, scaling is in PC	slot 1: I-87024W slot 2: I-8017HW
vphmi_08	download controller's file to PC	slot 0: I-87055W
vphmi_09	pop up an alarm window on PC	slot 0: I-87055W
vphmi_11	Trend curve.	slot 1: I-87024W slot 2: I-8017hW
vphmi_12	Record 1 to 8 Ch. i8017HW 's volt every 50ms and draw trend curve by M.S.Excel	slot 2: I-8017hW slot 1: I-8024W
vphmi_13	Record 1 to 4-Ch. i8017HW's voltage every 10ms and draw trend curve by M.S.Excel	slot 2: I-8017hW slot 1: I-8024W

## 3.2: Steps To Set Up A Web HMI Demo

### 3.2.1: Step 1 - Setup The Hardware

A. Please have one VP-25W7 and then plug one I-87055W board in its slot 0.

If you don't have the I-87055W (8 IN & 8 OUT board), please follow the same steps as below however your Web HMI demo may be replaced to "vphmi\_01" not "vphmi\_05"

B. Prepare one VGA monitor and one ethernet cable and then connect them to the ViewPAC. (Keyboard is using the software keyboard on the bottom-right of the VGA screen)

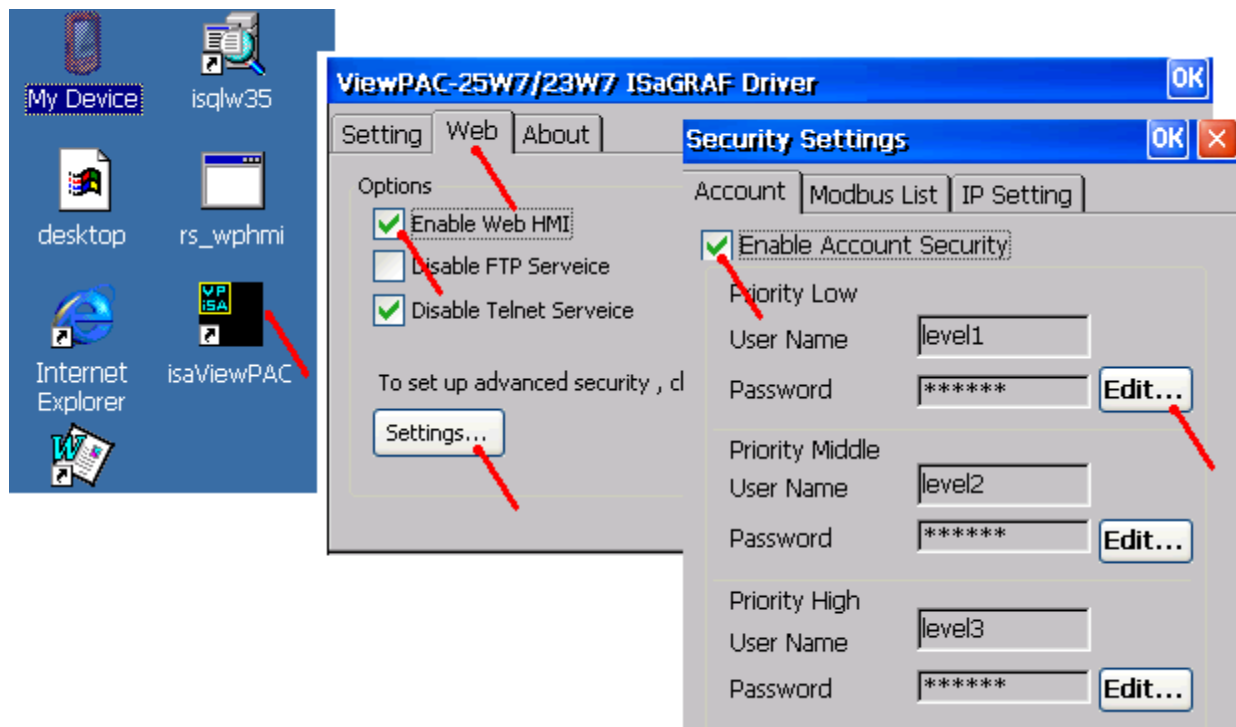
C. Power up the ViewPAC.

### 3.2.2: Step 2 - Setting The Web Options

A. Please refer to the Appendix A.3 to set a **fixed IP** address to the ViewPAC. (No DHCP)

B. Check on "Enable Web HMI" and then click on "Setting", Please check the "Enable Account Security" and then click on "Edit" to set (username , password). **Then remember to click on "OK"**

**Note: If "Enable Account Security" is not checked, any user can easily get access to your ViewPAC through the Internet Explorer.**



### 3.2.3: Step 3 - Download ISaGRAF Project

Please download ISaGRAF project "vphmi\_05" to the VP-25W7 . This project is in the VP-25W7/23W7 CD-ROM:\napdos\isagraf\vp-25w7-23w7\demo\ "vphmi\_05.pia"

vphmi\_05 demo need one I-87055W(8 IN & 8 OUT board) .If you don't have it , you may download "vphmi\_01" (CD-ROM:\napdos\isagraf\vp-25w7-23w7\demo\ "vphmi\_01.pia")

If you know how to restore "vphmi\_05.pia" to your ISaGRAF Workbench and download it to the controller, please go ahead to the section 3.2.4.

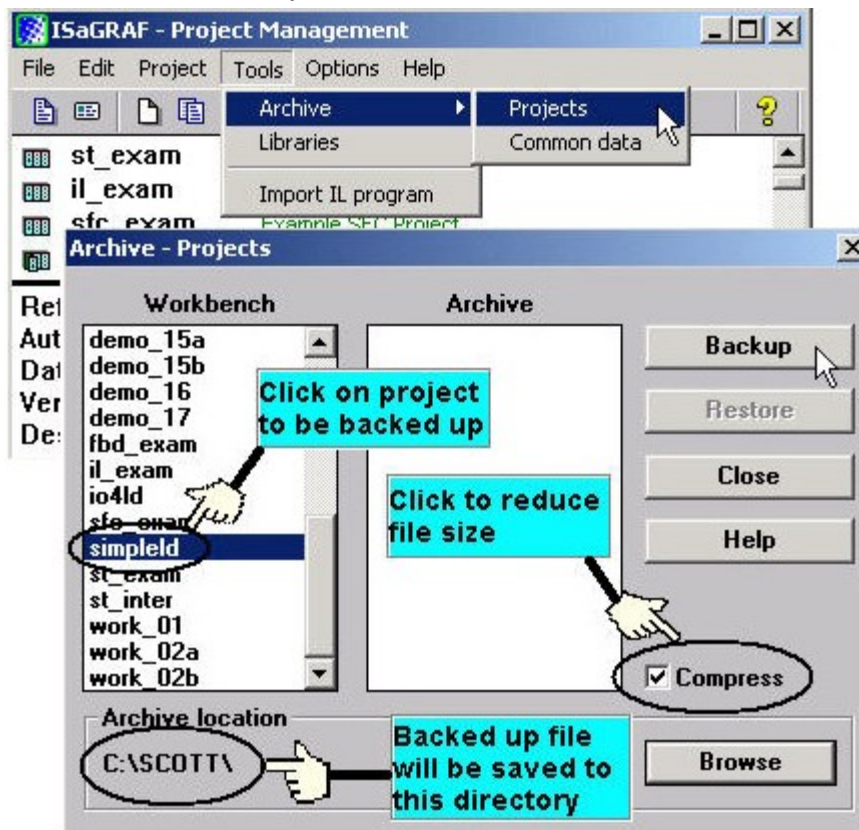
However if you don't know it, please refer to the below steps. Please make sure the ISaGRAF Workbench is already installed to your PC. (refer to the section 2.1 & 2.2)

#### Steps To Backing Up & Restoring An ISaGRAF Project:

For archiving purposes you can "Back Up" and "Restore" an ISaGRAF project. For example, you may want someone to test your program or email to [service@icpdas.com](mailto:service@icpdas.com) for ICP DAS's ISaGRAF technical service.

#### Backing Up An ISaGRAF Project

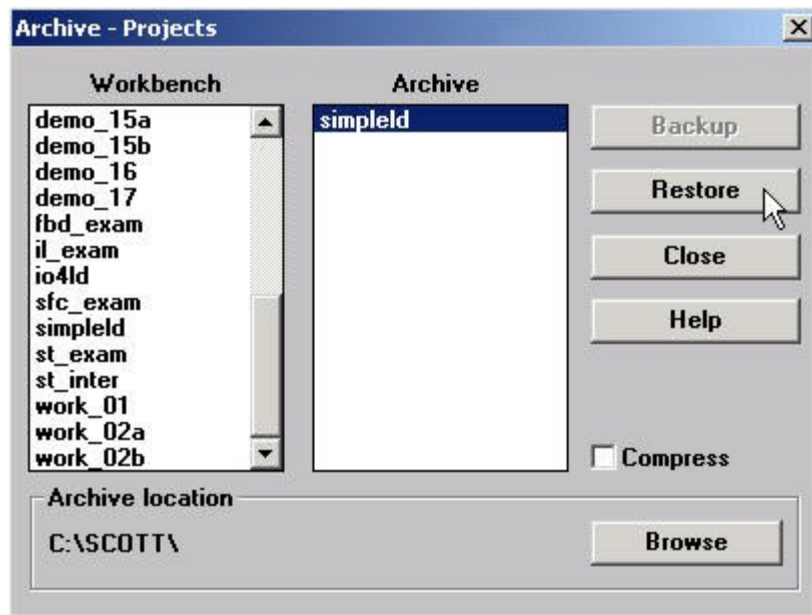
Open the "ISaGRAF Project Management" , select "Tools" from the menu bar, click on "Archive", and then click on "Projects". An "Archive Projects" window will open which allows you to designate where you want to save the ISaGRAF project to. Click on the name of the ISaGRAF project you want to backup, and then click on the "Backup" button. You can compress the size of the file you have backed up by clicking on the "Compress" checkbox BEFORE you click on the "Backup" button.



Then you will now find the backed up ISaGRAF project file in the "Archive" location you have designated. In the example above, the name of the backed up file is "simpleld.pia".

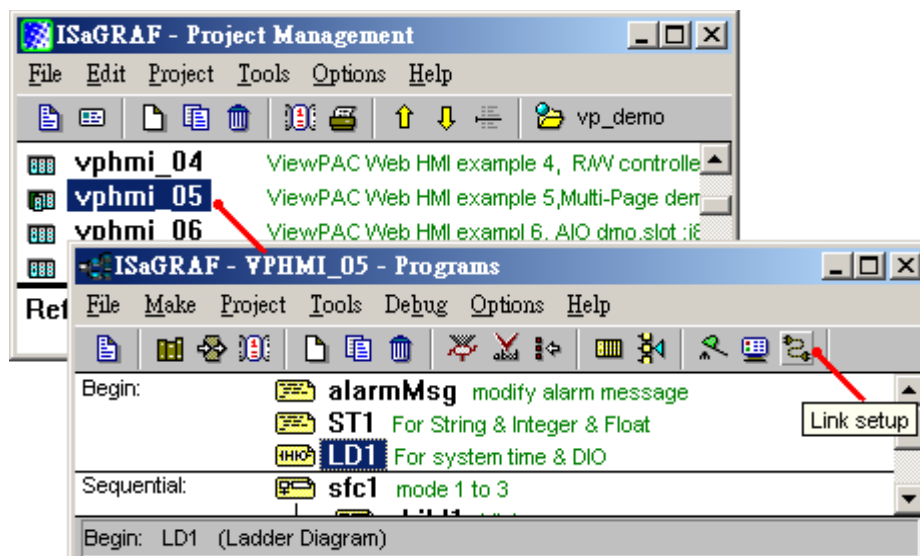
### Restoring An ISaGRAF Project

To restore an ISaGRAF project from a backed up file(\*.pia), use the same method as above to access the "Archive Projects" window, click on the name of the project you want to restore from the "Workbench" window, then click on the name of the backed up file from the "Archive" window, then click on the "Restore" button. The ISaGRAF project will now be restored to the sub-directory you designated.

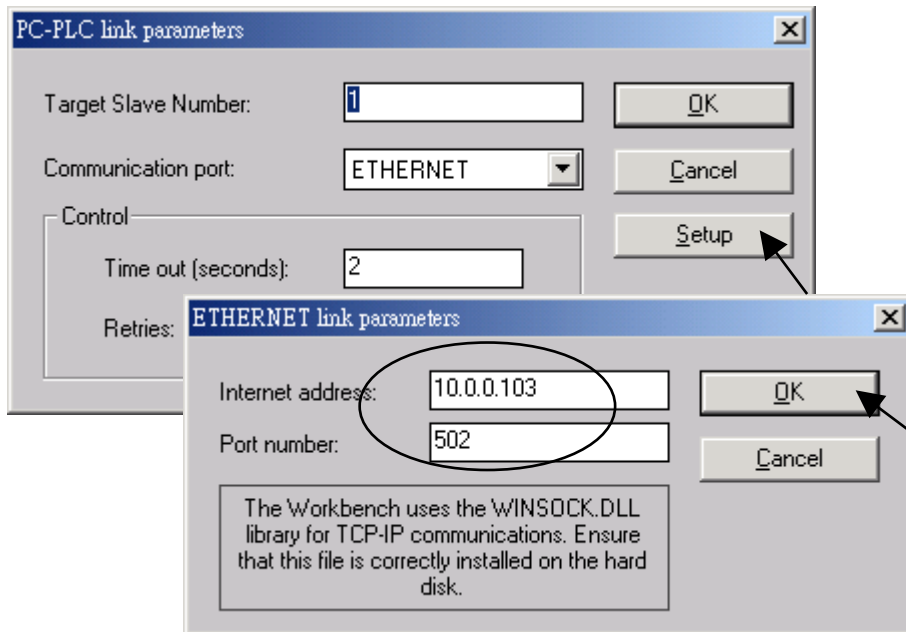


#### 3.2.3.1: Steps To Download a ISaGRAF Project To The Controller:

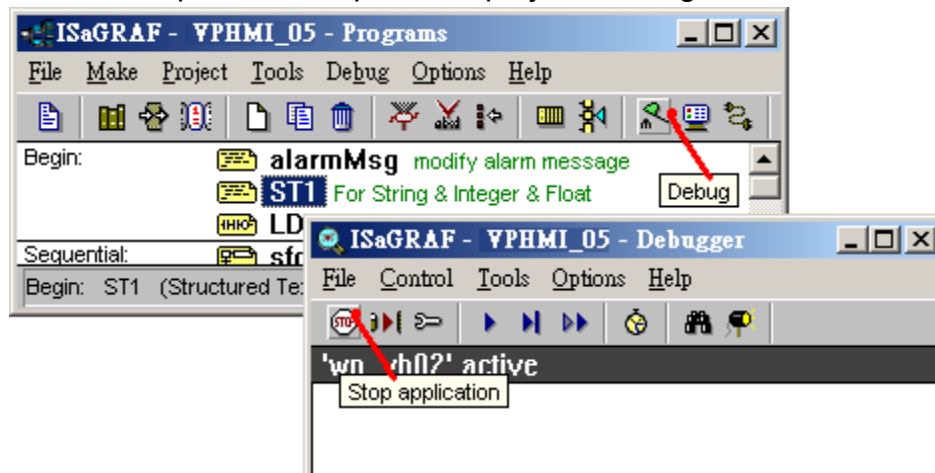
Double click on the "vphmi\_05" to get into the project. Then click on "Link setup".



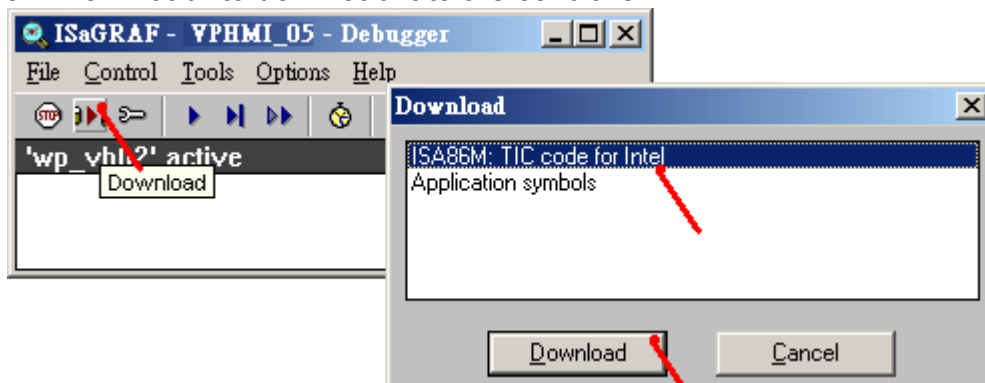
Click on “Setup” first and then entering the IP address of your controller. The port number should be 502.



To download “vphmi\_05” project to the VP-25W7, Click on “Debug” . If communication is established, click on “stop” first to stop the old project running in the VP-25W7.



Then click on “Download” to download it to the controller.



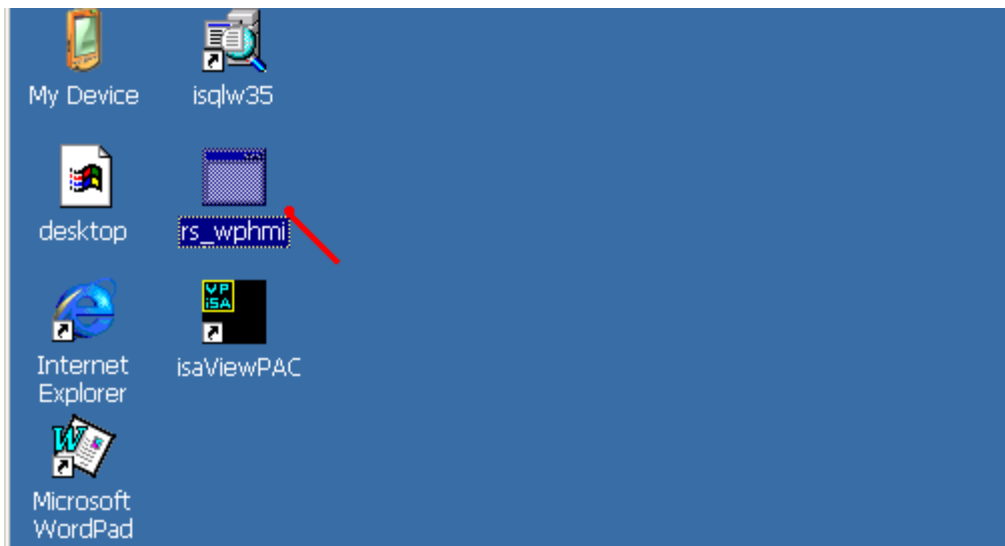
### 3.2.4: Step 4 - Download Web Pages To The Wincon

A. Please copy all files in the CD-ROM:

VP-25W7/23W7 CD: \napdos\isagraf\vp-25w7-23w7\vp-webhmi-demo\vphmi\_05\ \*.\*  
to the VP-25W7 's \Micro\_SD\Temp\HTTP\WebHMI\

vphmi\_05 demo need one I-87055W in its slot 0. If you don't have the I-87055W (8 IN & 8 OUT board), you may download "vphmi\_01"

B. Since the Web Pages are modified or new copied, please run "rs\_wphmi.exe" to reset the Web server. **The "rs\_wphmi.exe" must be run every time when user has modified any file in the ViewPAC 's \Micro\_SD\Temp\HTTP\WebHMI\**



### 3.2.5: Step 5 - Show Time

Please run Internet Explorer (Rev. 6.0 or higher), key in the IP address of your VP-25W7. For example: 61.218.42.10 or http://61.218.42.10

