

---

## Appendix B: Update Wincon's ISaGRAF Driver to Higher Version

---

### Note:

If you have purchased W-8037 or W-8337 or W-8737 or W-8036 or W-8336 or W-8736, the Wincon ISaGRAF Driver is already installed when shipping out. You don't need to install it. However if you want to upgrade to higher version, you may upgrade it by yourself.

The Wincon ISaGRAF driver can be obtained at

WINCON8000 CD-ROM: \napdos\isagraf\wincon\driver\<version Number>\

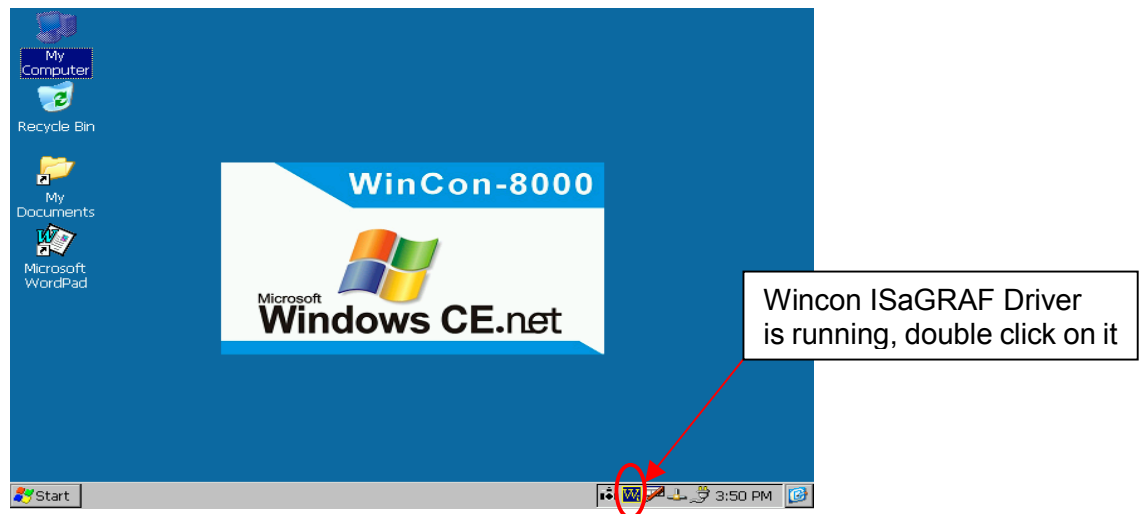
For example, version 3.12 is located at

\napdos\isagraf\wincon\driver\3.12\

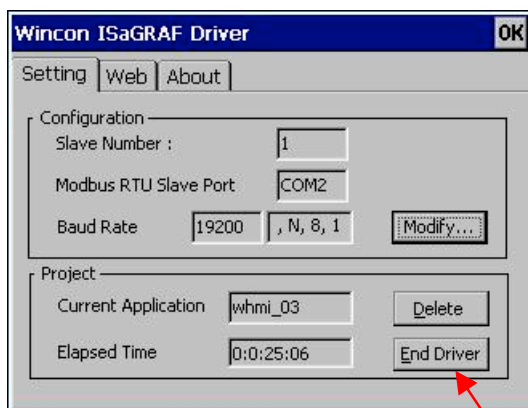
Or you may download it from

<http://www.icpdas.com/products/8000/isagraf.htm>

1. If your Wincon is W-8037/8337/8737 or W-8036/8336/8736, please stop "Wincon ISaGRAF Driver" first. However if it is W-8031/8331/8731 or W-8039/8339/8739, please goto step 2.

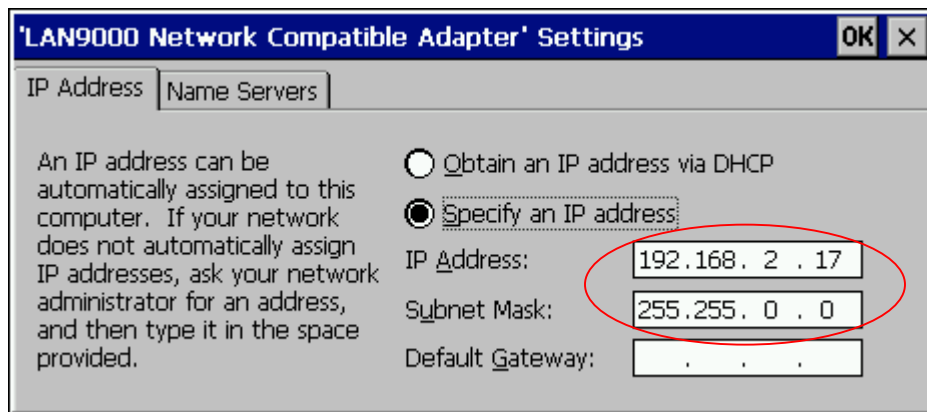


Click on "End Driver" to stop it.

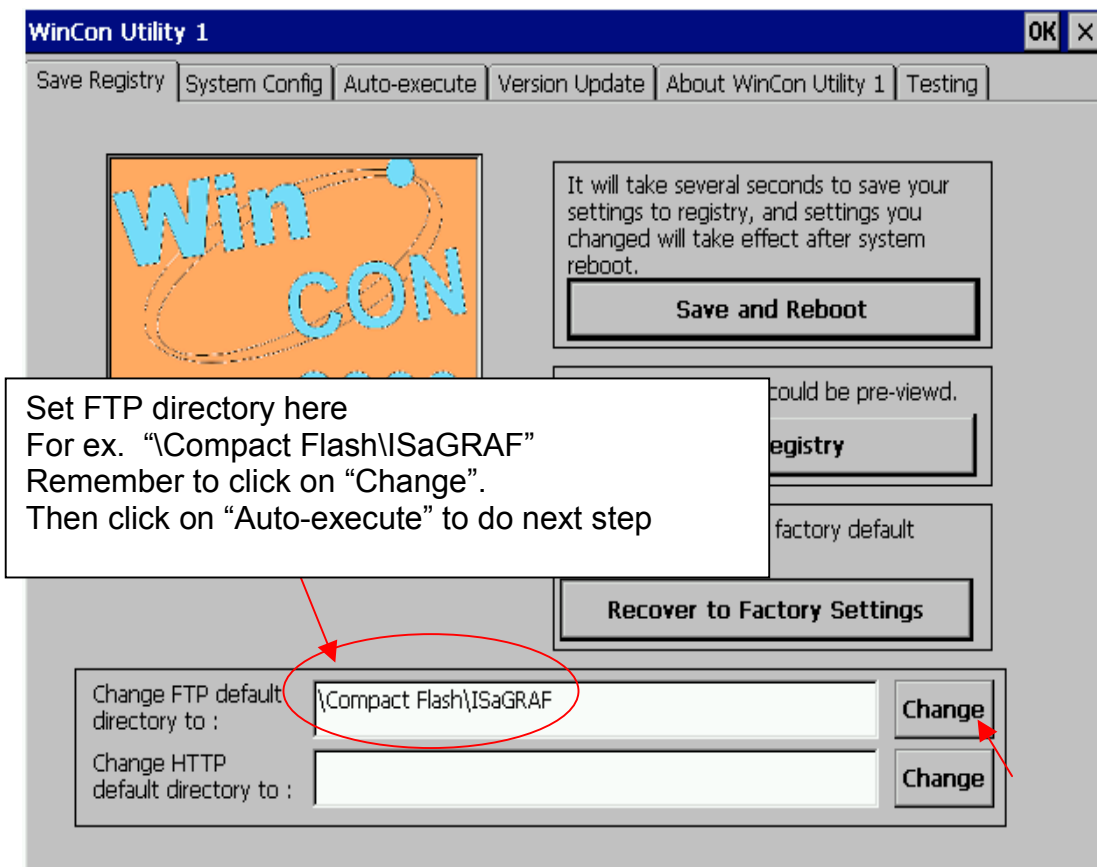


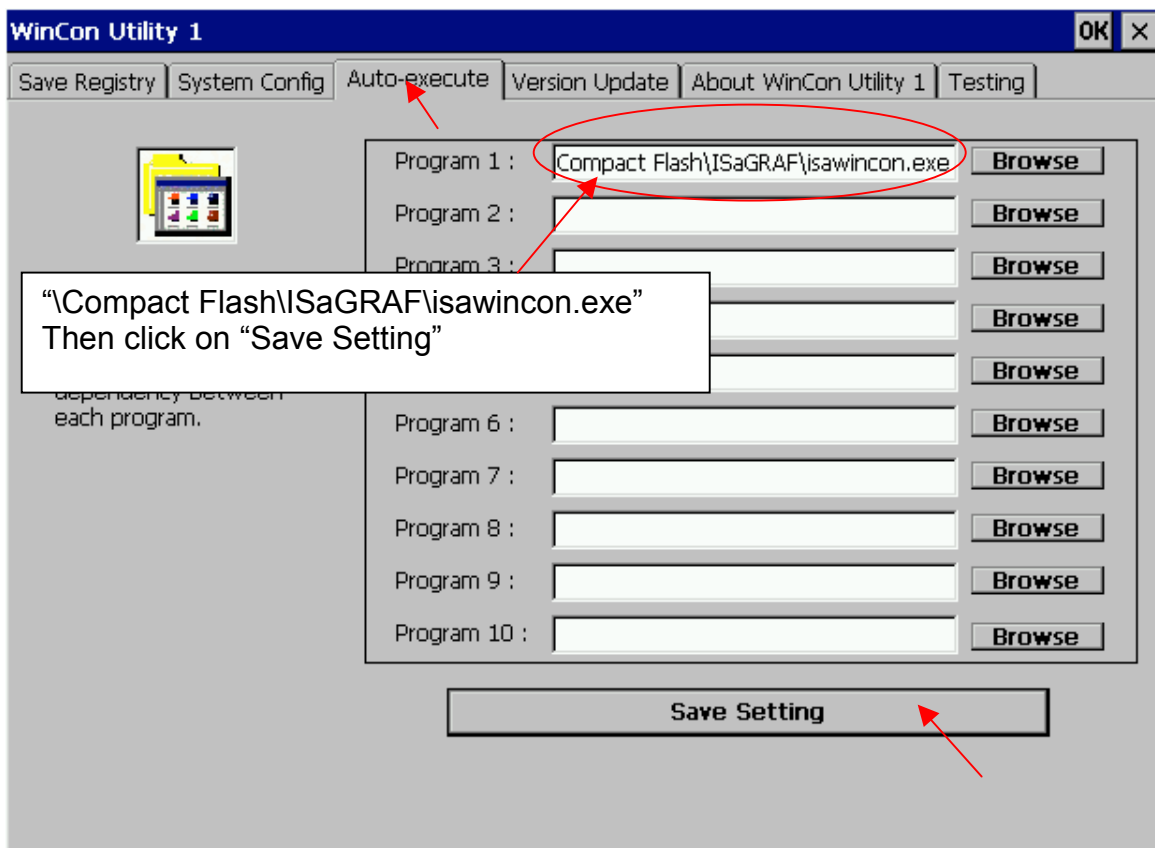
## 2. Set up Wincon's IP, Mask, FTP directory & Auto-execute

- A. Please create a folder "ISaGRAF" inside "\Compact Flash" folder in your Wincon controller. Then it will be \Compact Flash\ISaGRAF
- B. Please run "Start" – "Setting" – "Control Panel", then double click on "Network and Dial-up Connections". Then click on "LAN90001". Set your Wincon's IP address & its Subnet Mask.

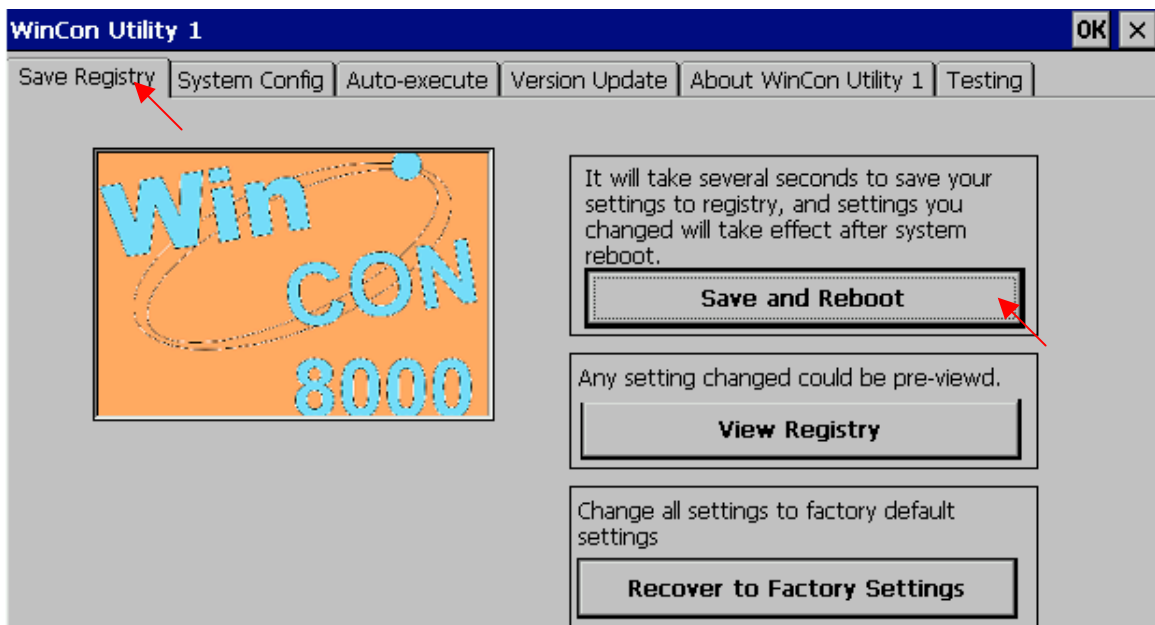


- C. Please run "Start" – "Programs" – "Wincon Utility"





Save Registry. This step will re-boot your Wincon controller.



3. Download **isawincon.exe** , **rs\_whmi.exe** , **mscorlib.dll** , **QuickerNet.dll** , **Quicker.dll** (& **license.bin** if your Wincon is W-8031/8331/8731 or W-8039/8339/8739) from your PC to your Wincon controller.

Then please copy them to “\Compact Flash\ISaGRAF\”. & then re-cycle your wincon’s power.

You may use below methods to download these files.

A. Using ftp:

Wincon:

Please run “Start” – “Run”, then type in “**services load ftpd**”

PC:

Please open browser and then type in <ftp://<IP address>>,  
for ex. <ftp://192.168.2.17>  
copy all of them & past it.



B. Using Pen Drive

Please copy **isawincon.exe** , **rs\_whmi.exe** , **mscorlib.dll** , **QuickerNet.dll** , **Quicker.dll** (& **license.bin**) to “\Compact Flash\ISaGRAF\”

Remember to re-cycle your Wincon’s power.