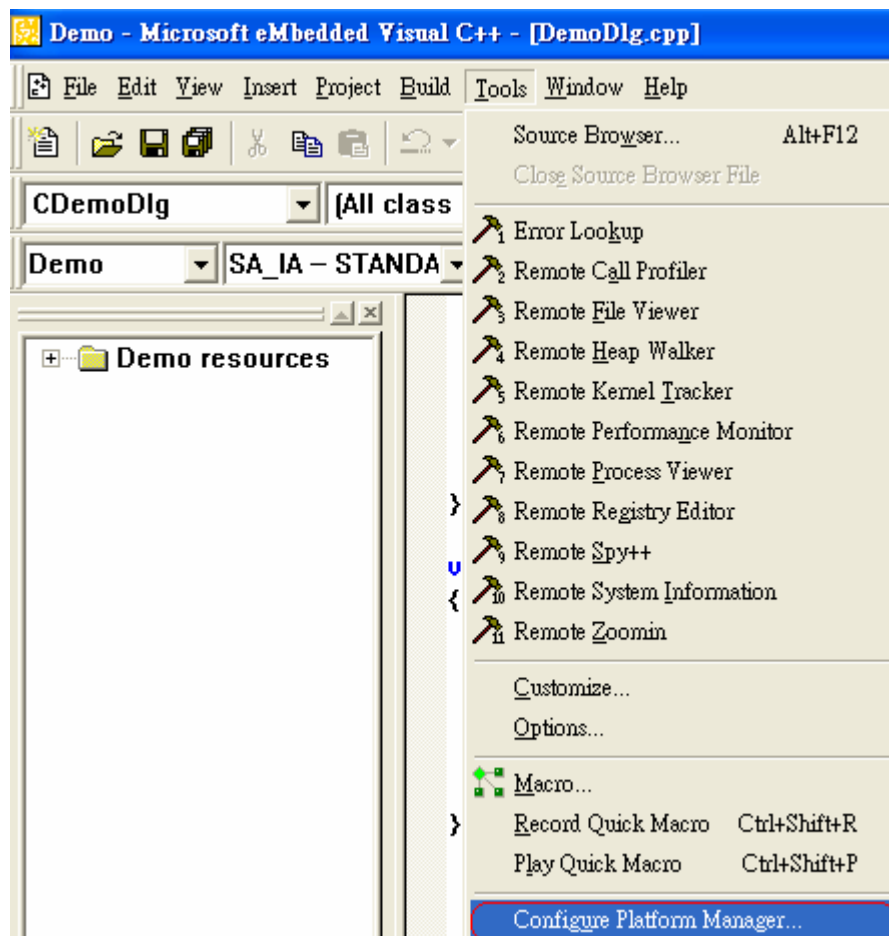


## How to use EVC Debug mode to connect WinCon-8000 ( TCP-IP ):

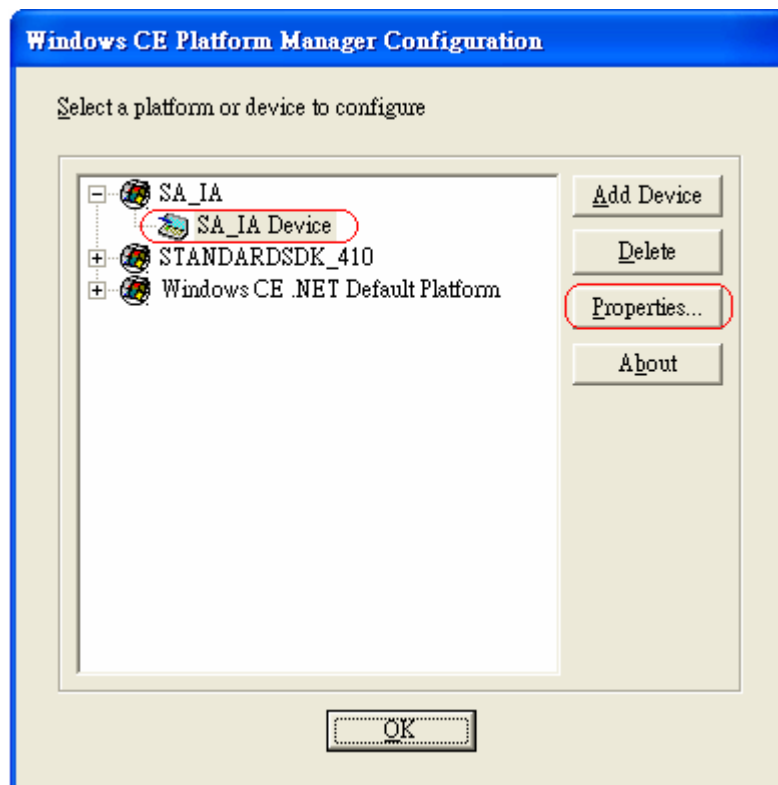
1. Make sure WinCon-8000 EVC4 sp1 SDK has been installed on host PC.

2. Setting:

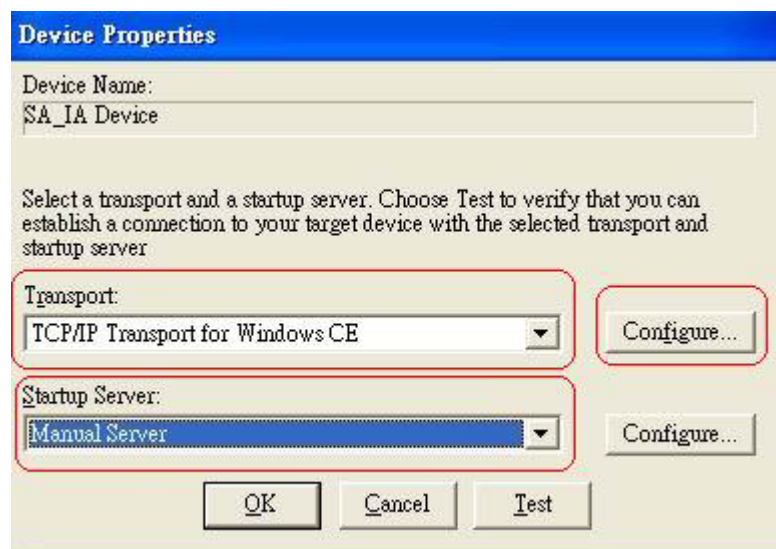
2-1、 Select Tools->Configure Platform Manager:



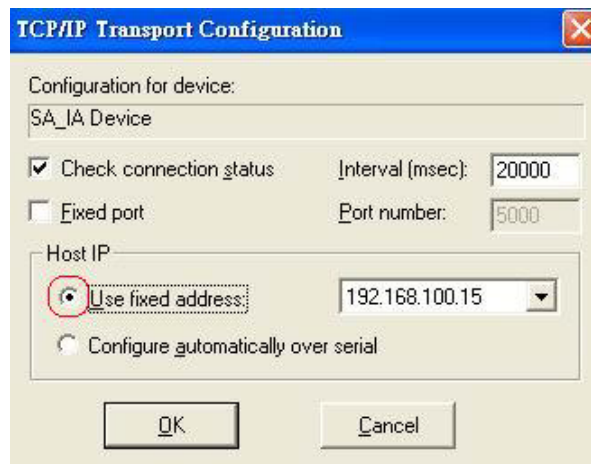
**2-2. Choose SA\_IA Device, then click "Properties" button:**



**2-3. Choose "TCP/IP Transport for Windows CE" on Transport and "Manual Server" on Startup Server , then click "Configure" button to set up configuration of "Transport" :**

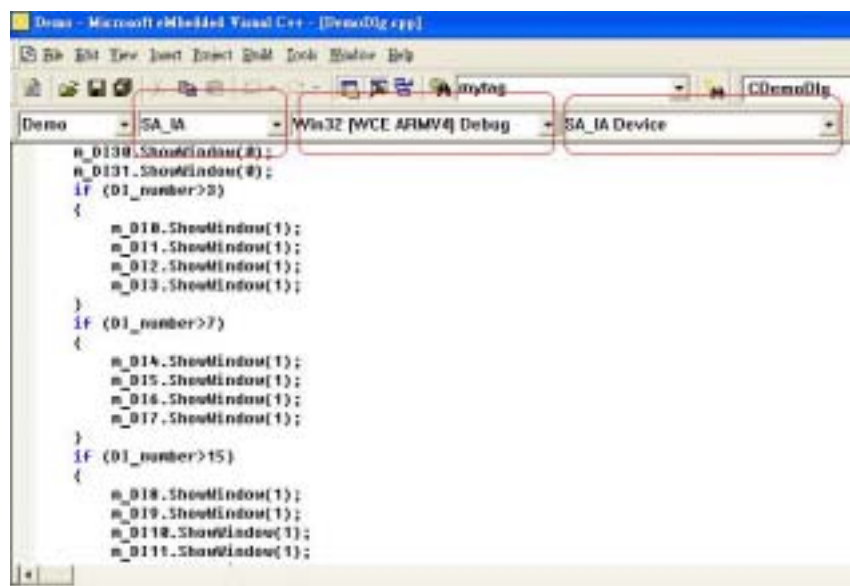


**2-4. Select "Use fixed address" then click "OK" to continue.**

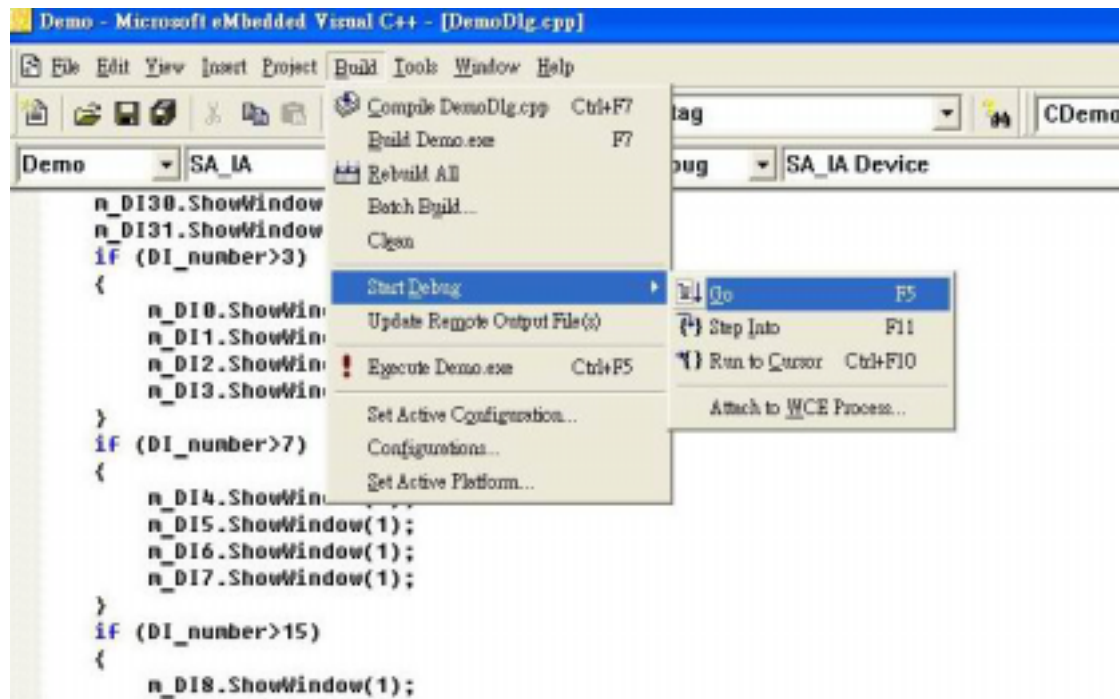


2-5. Click “OK” buttons twice to close the “Device Properties” and “Window CE Platform Manager Configuration” windows.

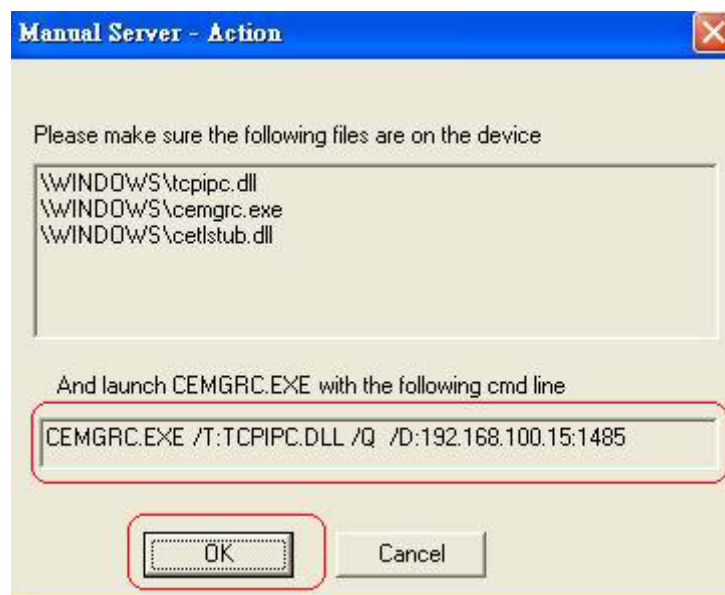
- 2-6. Set Active
- a) WCE Configuration as “SA\_IA”
  - b) Active Configuration as “Win32[WCE ARMV4] Debug”.
  - c) Default Device as “SA\_IA Device”.



2-7. Select Build->Start Debug->Go.



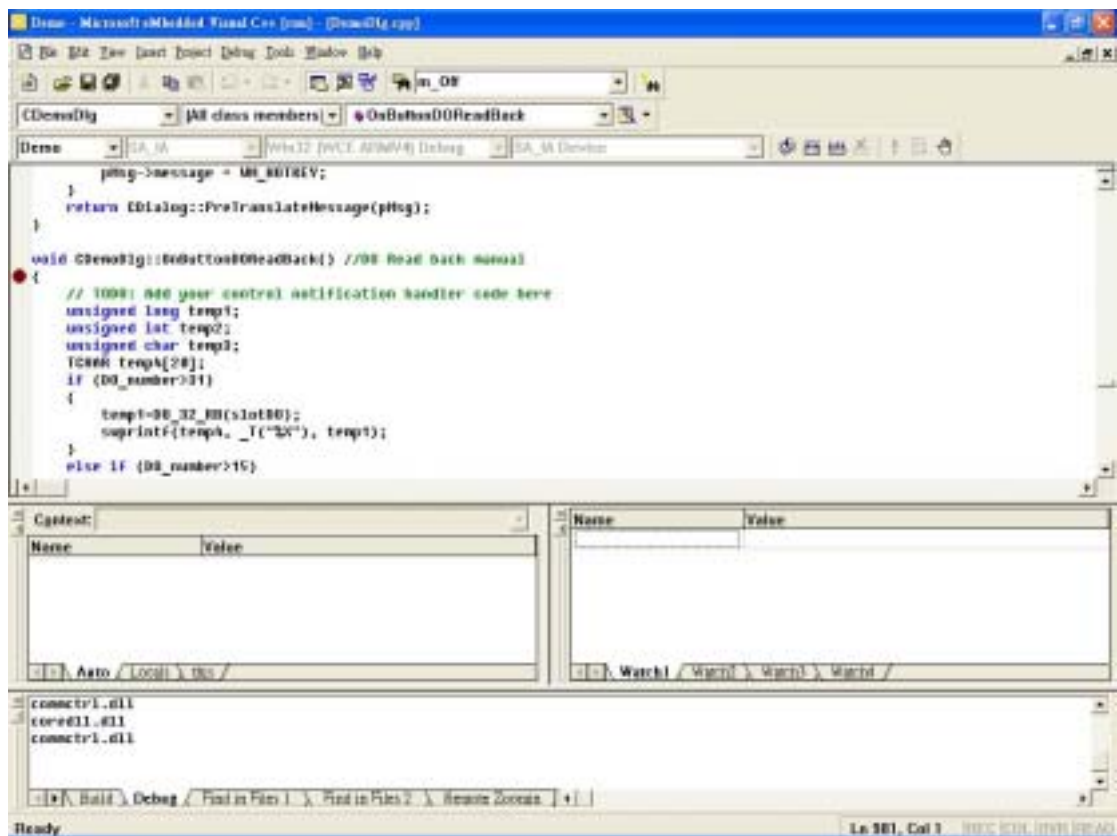
2-8. Please execute the listed command line in the Wincon-8000.(for this case, CEMGRC.EXE /T:TCPIPC.DLL /Q /D:192.168.100.15:1485) then click “OK” .



(P/S: Please make sure tcpipc.dll, cemgrc.dll, cetstub.dll are existing in your Wincon-8000)

2.9. Afterwards, the program code will be downloaded to

Wincon-8000 and then you can start online-debugging your code.



2005/4/01