



Installing an InduSoft SoftKey License on the W-8x39/W-8x36 User Manual

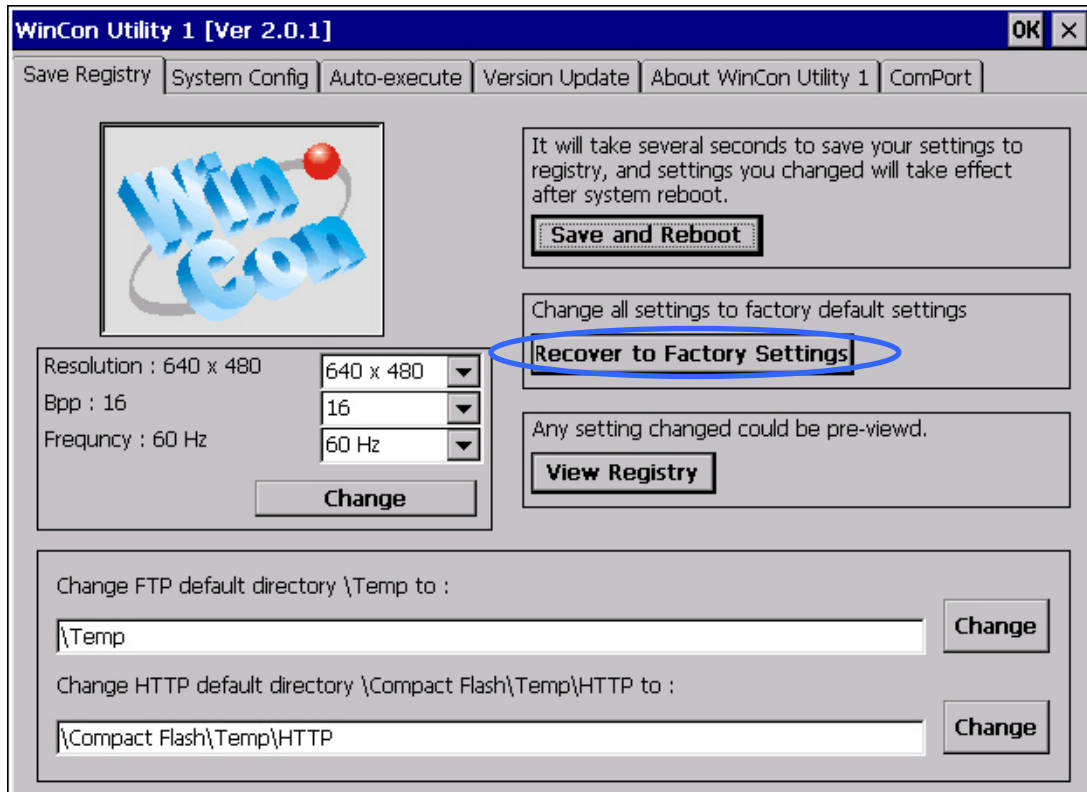
Index

INDEX.....	1
I. WHY INSTALL AN INDUSOFT SOFTKEY LICENSE ON THE W-8X39/W-8X36	2
II. INSTALLING AN INDUSOFT SOFTKEY LICENSE ON THE W-8X39/W-8X36	3
II-1. INSTALLING OR UPGRADING A LICENSE LOCALLY	3
II-2. INSTALLING OR UPGRADING A LICENSE REMOTELY	9

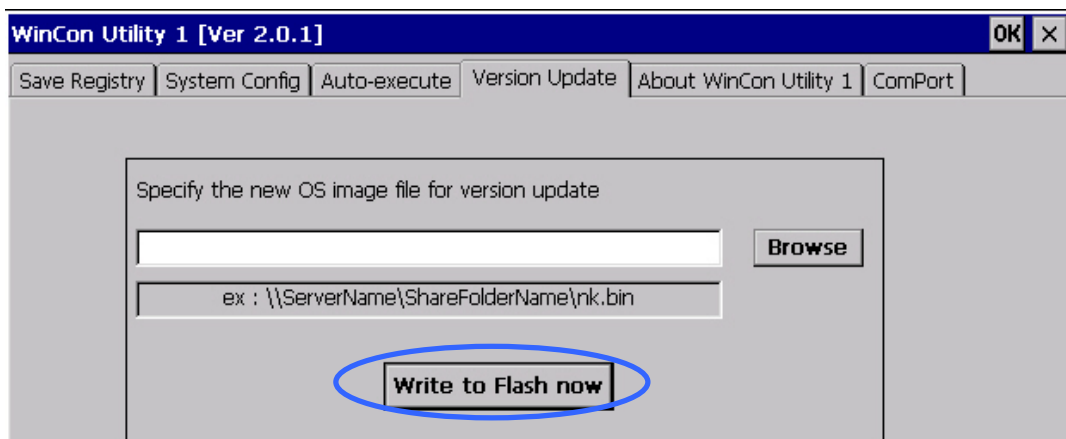
I. Why install an InduSoft Softkey License on the W-8x39/W-8x36

The InduSoft Softkey license on the W-8x39/W-8x36 is normally fully installed before the W-8x39/W-8x36 embedded controller is purchased by the user. Generally speaking, users should not need to install the Softkey License on the W-8x39/W-8x36 embedded controller. However, the license needs to be reinstall if any of the following situations have occurred:

- If the “Recover to Factory Settings” button on the WinCon Utility tool application has been used.



- If the Operating System image version on the W-8x39/W-8x36 embedded controller has been changed.



II. Installing an InduSoft SoftKey License on the W-8x39/W-8x36


There are two ways to register a CEView license on your W-8x39/W-8x36:

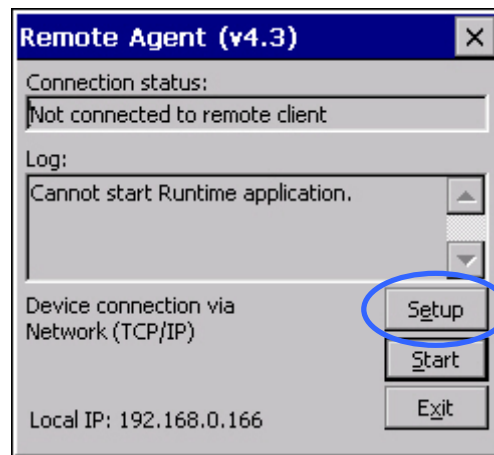
- **Locally:** Using the *Remote Agent* from the W-8x39/W-8x36 embedded controller as the interface.
- **Remotely:** Using InduSoft Web Studio to send the license to the W-8x39/W-8x36 embedded controller.

II-1. Installing or Upgrading a License Locally

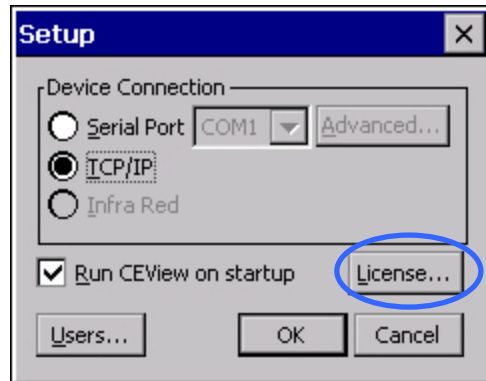
To install a new (or upgrade an existing) CEView SoftKey license locally, use the following procedure:

1. If the “Remote Agent” program (CESERVER.EXE) does not start automatically when powering on the W-8x39/W-8x36 embedded controller, you can run it manually from the \Compact Flash\Indusoft\ or the \Compact Flash\Indusoft\CEServerV4.3 folder. From the “Remote Agent (v4.3)” dialog box, click the “Setup” button to open the Setup dialog.

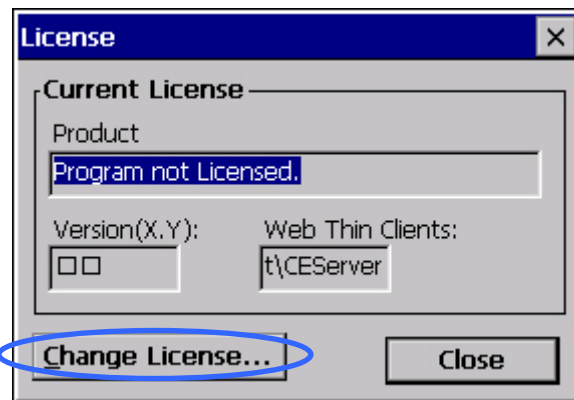
 **Note:** If the \Compact Flash\Indusoft\ directory has the “CEServerV4.3” folder, users need run the Remote Agent program in “\Compact Flash\Indusoft\CEServerV4.3\CEServer.exe” file.



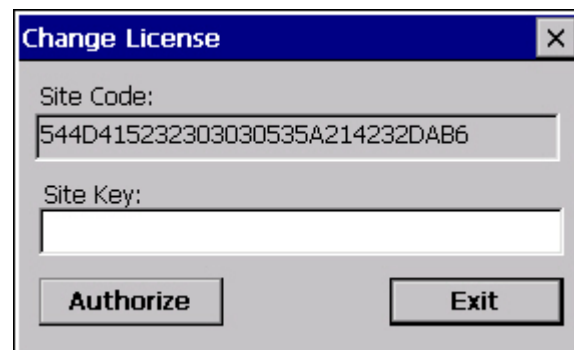
2. In the “Setup” dialog box, click the “**License**” button to open the License dialog.




3. Click the **"Change License"** button to open the "Change License" dialog.



4. Once the "Change License" dialog box is open, the cursor will be located in the "Site Key" field.

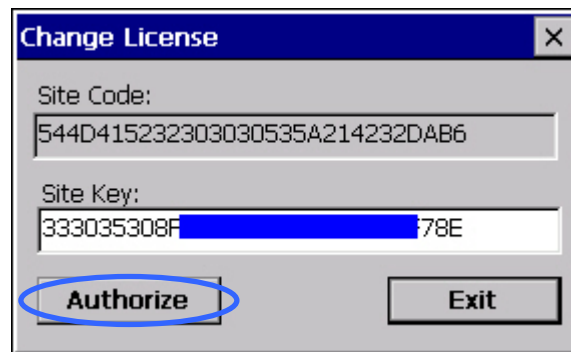


5. To find the Site Key, open the Memo cover on the W-8x39/W-8x36 embedded controller as shown in the diagram below.

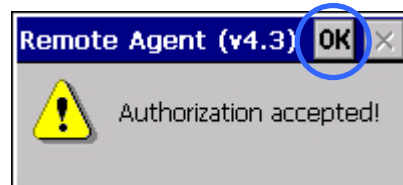
 **Note:** If you need help identifying the Site Key, please copy the Site Code information shown in the "Site Code" field of the "Change License" dialog box and send it to ICP DAS.

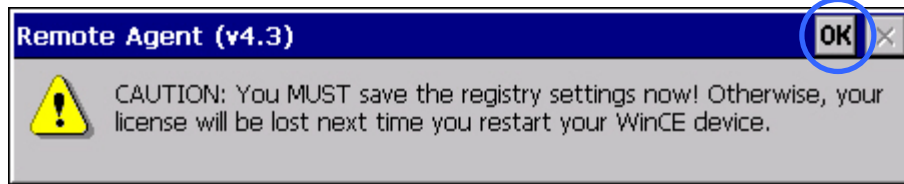


6. ICP DAS provides the "Site Key" information matching the "Site Code" on the Memo cover. Carefully enter the Site Key information into the "Site Key" field of the "Change License" dialog box, then click the "Authorize" button.



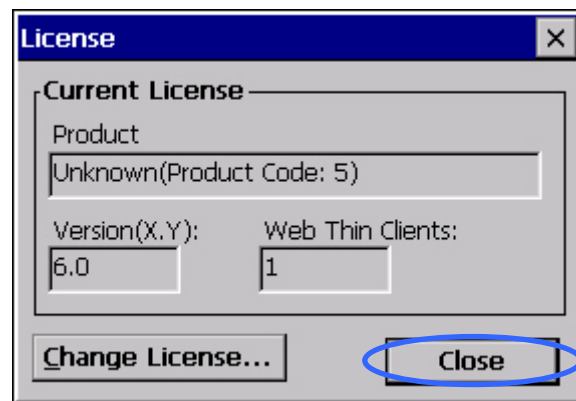
If the Site Key is accepted (validated), the following message will be displayed. Click the "OK" button to continue.





Note: If the “Site Key” is not validated, an error message will be displayed. If this happens, double-check that you correctly entered the Site Key information. If you entered the Site Key correctly and still receive an error message, contact ICP DAS for further assistance.

If you successfully have a valid InduSoft Web Studio Softkey license installed, the current license settings will be displayed. Close the “Remote Agent” program.



The “License” dialog contains the following fields:

- **Product** : Specifies which features and restrictions are enabled for application (such as the maximum number of tags supported, maximum number of drivers running simultaneously, and so on). Consult the following Table 2-1 about which Product Types are available and which features are enabled for each type.

Table 2-1

Product Type	Product field	Product Name of ICPDAS	Tags
CEView Lite Plus	Unknown(Product Code: 5)	InduSoft-CE300R	300.
CEView Standard	CEView	InduSoft-CE1500R	1,500.

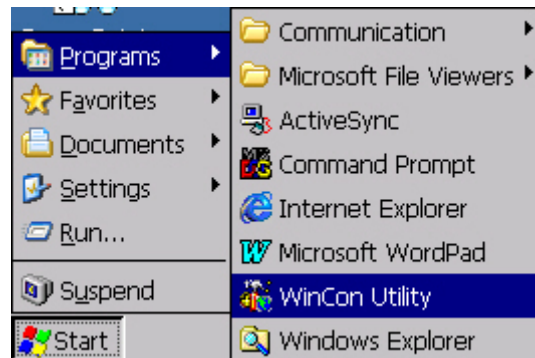
- **Version:** Specifies the product version it supports.
- **Web Thin Clients:** Specifies how many Web Thin Clients are supported. You can connect one or more Web Thin Clients to the server simultaneously (for an additional charge), but the license installed on the server must support these additional Web Thin Clients.

Options for adding Web Thin Clients are as follows:

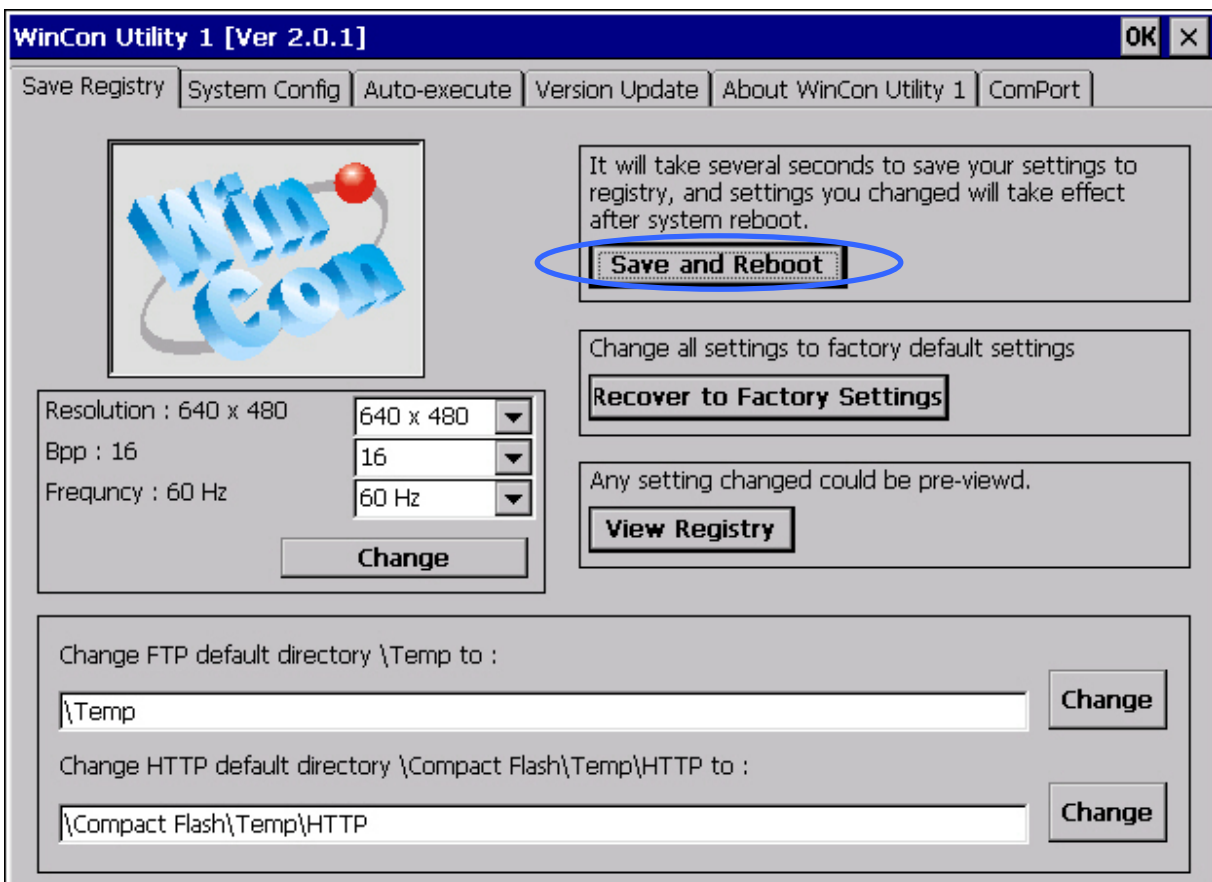
– **Server for CEView (WinCE):** Connects 0 (No Web Thin Clients), 1, 2, 4, or 8 Web Thin Clients to the server simultaneously.

 **Note:** If the License dialog information is incorrect according to your product order, please send a screenshot of the License dialog by the \Compact Flash\ICPDAS\Tools\ captce.exe tools to service@icpdas.com.


7. Select **Start**→**Programs**→**WinCon Utility** on the W-8x39/W-8x36 embedded controller to run the WinCon Utility.

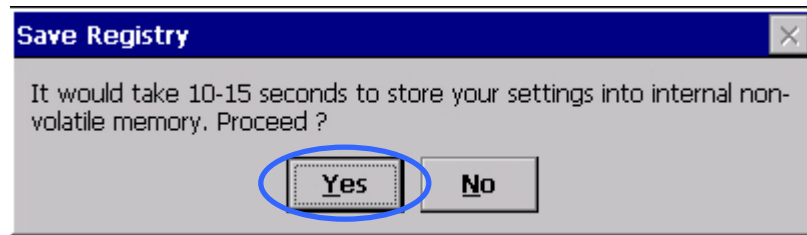


8. In the “WinCon Utility 1” dialog box, click the “**Save and Reboot**” button to save the License information into the W-8x39/W-8x36 registry.



9. Click the "Yes" button to save the new settings.

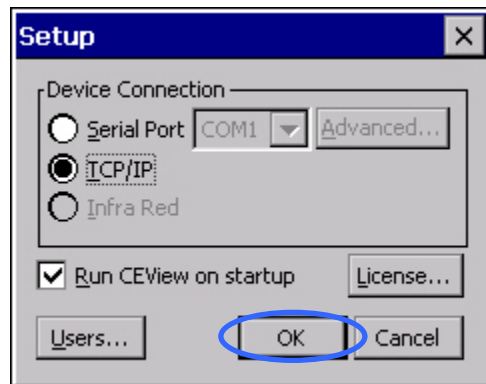
 **Note:** It normally takes about 10-15 seconds to store the new settings into the internal nonvolatile memory.



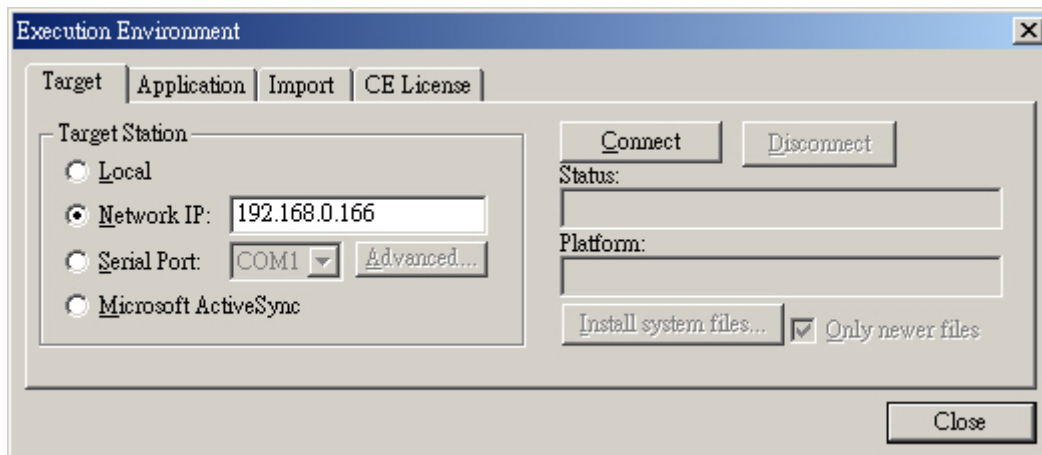
II-2. Installing or Upgrading a License Remotely

To install a new (or upgrade an existing) *CEView* SoftKey license remotely, use the following procedure:

1. Execute the three first steps as described in the previous section.
2. In the “Setup” dialog, specify the **Device Connection** type by clicking (*enabling*) the **Serial Port** or **TCP/IP** radio button. (If you enable **Serial Port**, you must also select a port from the combo-box list). Click **OK** to close the dialog.



3. Run InduSoft Web Studio on the WinNT/2000/XP workstation and establish a connection to the W-8x39/W-8x36 embedded controller using either a serial or TCP/IP link.
4. From the InduSoft Web Studio main menu bar, select **Project** → **Execution Environment** to open the “Execution Environment” dialog box.



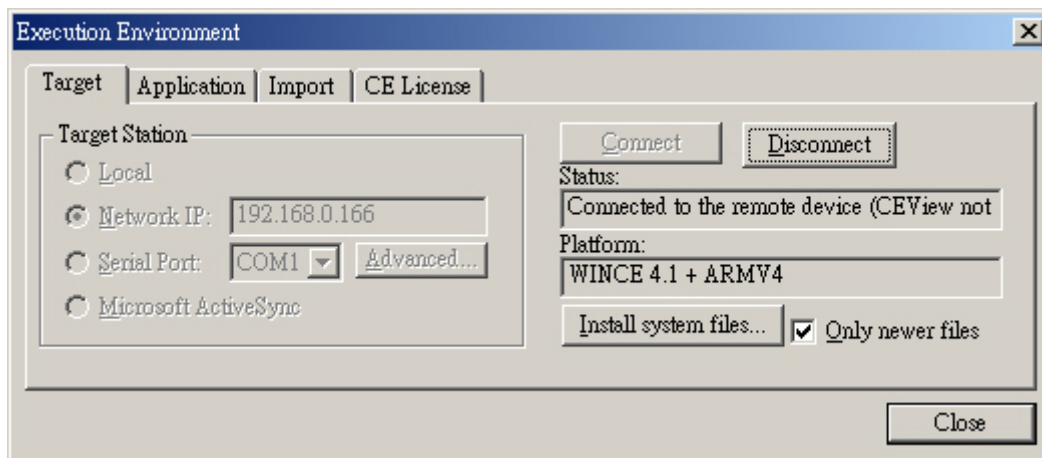
5. Specify a target station by clicking one of the following radio buttons in the “Target Station” section:
 - **Local:** The local workstation
 - **Network IP:** Type the IP address of the W-8x39/W-8x36 embedded controller into the field provided
 - **Serial Port:** Select a port from the combo-box list provided
6. Once a selection has been made, the “**Connect**” button becomes active. Click the button to connect to the W-8x39/W-8x36 embedded controller on which the “Remote Agent” is running.

Note: If you select **Network IP**, you must also enter the IP address of the W-8x39/W-8x36 embedded controller in the text box provided.

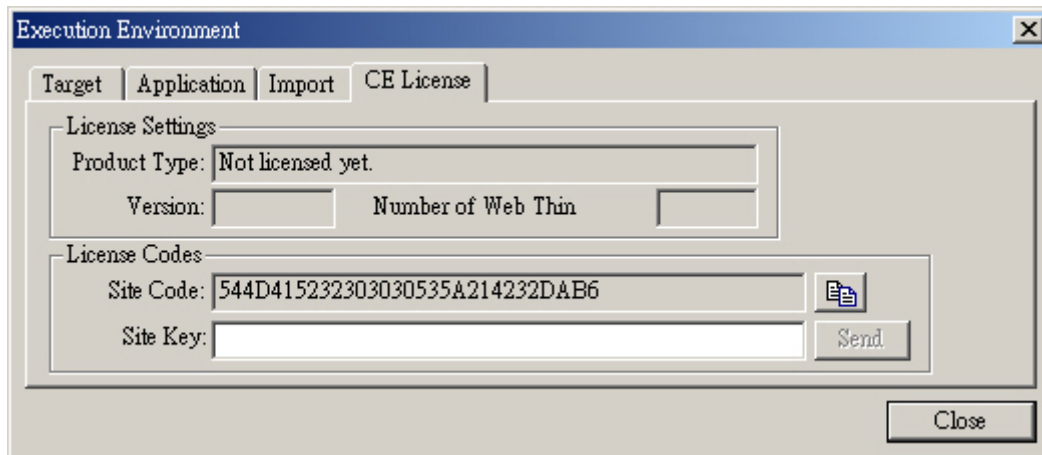
Tip: TCP/IP links provide a better communication performance than Serial links.

- Once a connection has been established, the “**Status**” field will display the following message:

Connected to CEView <CEView Version>




- Select the *CE License* tab to determine which license setting is currently installed on your W-8x39/W-8x36 embedded controller.

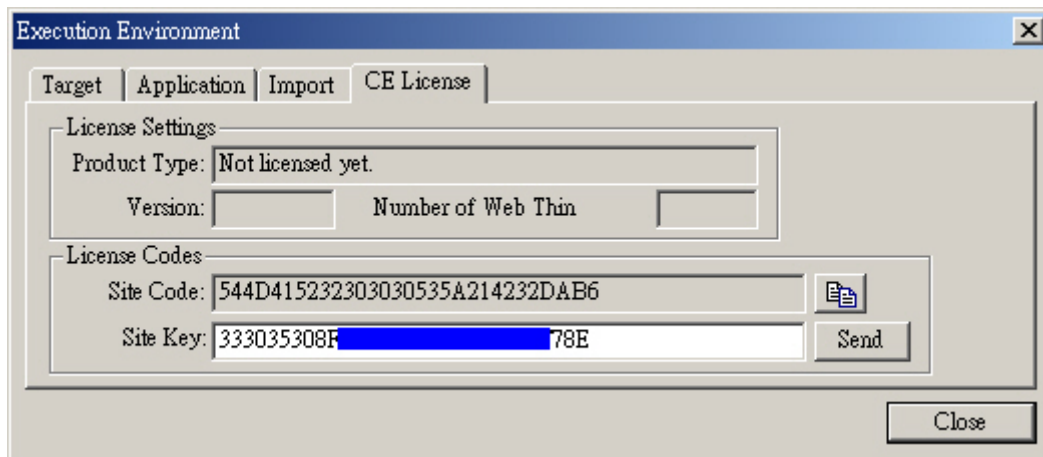


- At this point, the “Site Key” field will be empty. To determine the “Site Key” information, open the Memo cover on the W-8x39/W-8x36 embedded controller as shown in the diagram below.

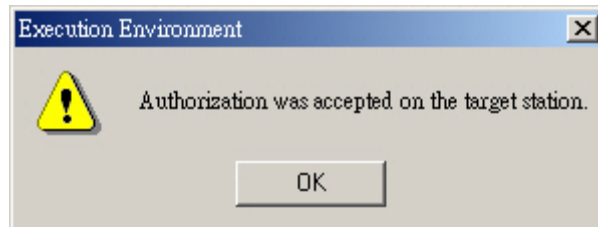
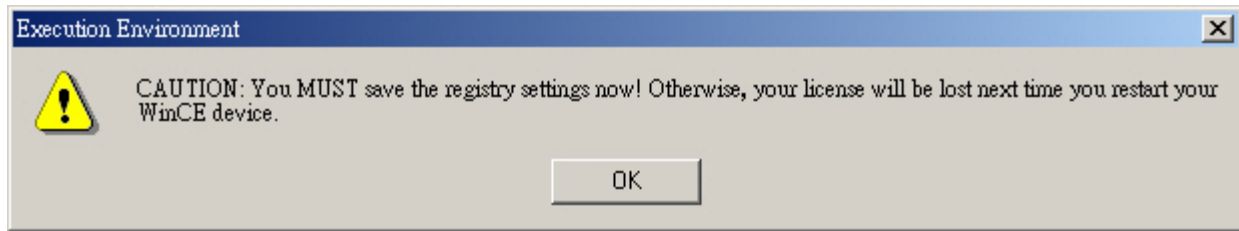



 **Note:** If you need help identifying the SiteKey, please copy the Site Code information shown in the “Site Code” field in the **License Codes** section of the Execution Environment dialog and send it to ICP DAS.


10. ICP DAS provides the “Site Key” information matching the “Site Code” on the Memo cover. Carefully enter the Site Key information into the “**Site Key**” field as shown below.



11. Click the “Send” button to send the code to the **Remote Agent** running on the W-8x39/W-8x36 embedded controller.
12. The **Remote Agent** program will attempt to install the new license using the Site Key sent from InduSoft Web Studio. If the Site Key is accepted (validated), the following message will be displayed. Click the OK button to continue.



 **Note:** If the Site Key is not validated, an error message will be displayed. If this happens, double-check that you correctly entered the Site Key information. If you entered the Site Key correctly and still receive an error message, contact ICP DAS for further assistance.

 **Caution:** After sending the license to the W-8x39/W-8x36 embedded controller, be sure to save the registry settings. If you do not save these settings, you will lose the license after rebooting the device. Refer to the two last steps in the previous section for details of how to set the W-8x39/W-8x36 embedded controller registry.