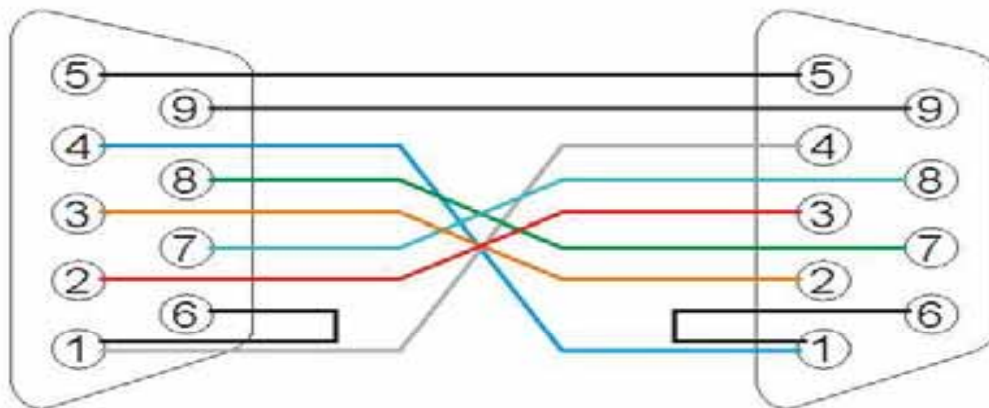


## I-87K Module Settings

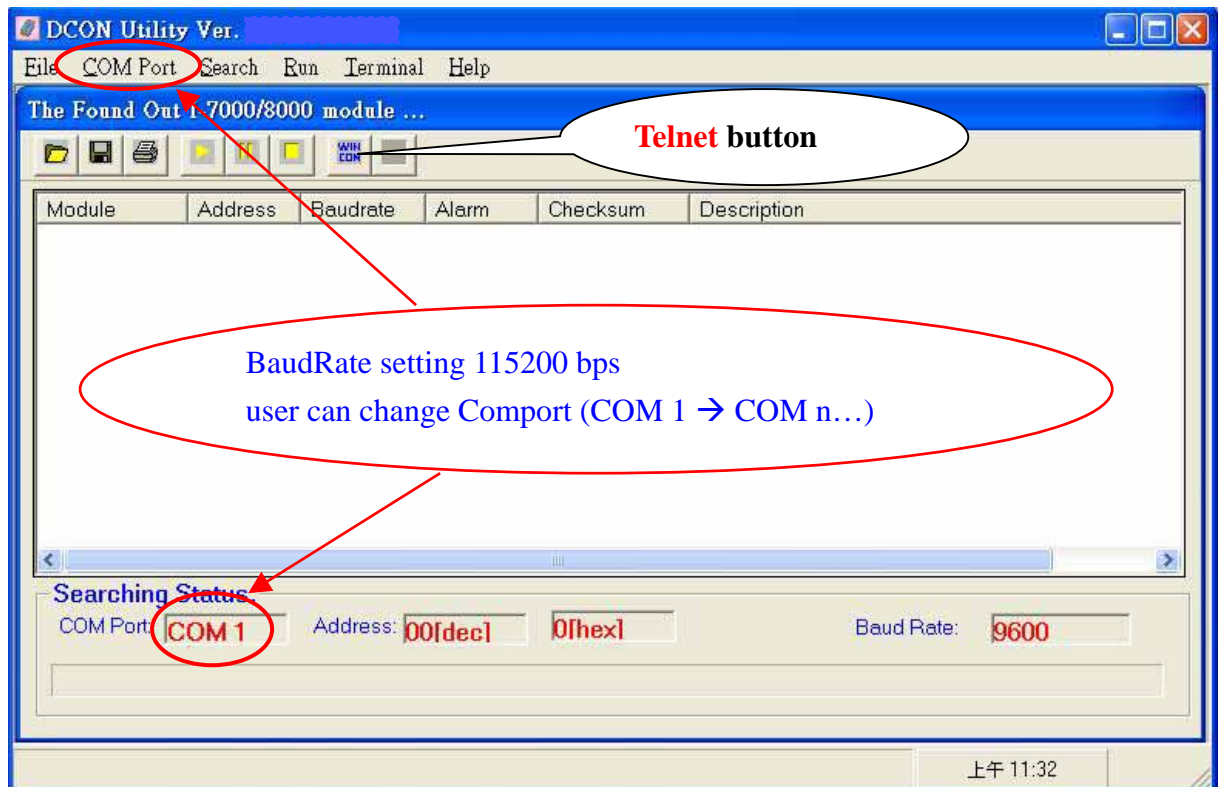
When the module of I-87K is put in the slots of WinCon-8000 , it can be set up through the **DCON\_Utility** of PC。 The method is easy to use。 When you do it orderly , you will find it is easy to set up the parameter of the I-87K module。

1. You must prepare for a cable(CAT6) to start the DCON\_CE of WinCon for PC through ethernet (telnet to use)。 To prepare one line of **Full Null Modem** and connect the **Comport** of PC and the **COM2** of WinCon-8000 (data transmission)。

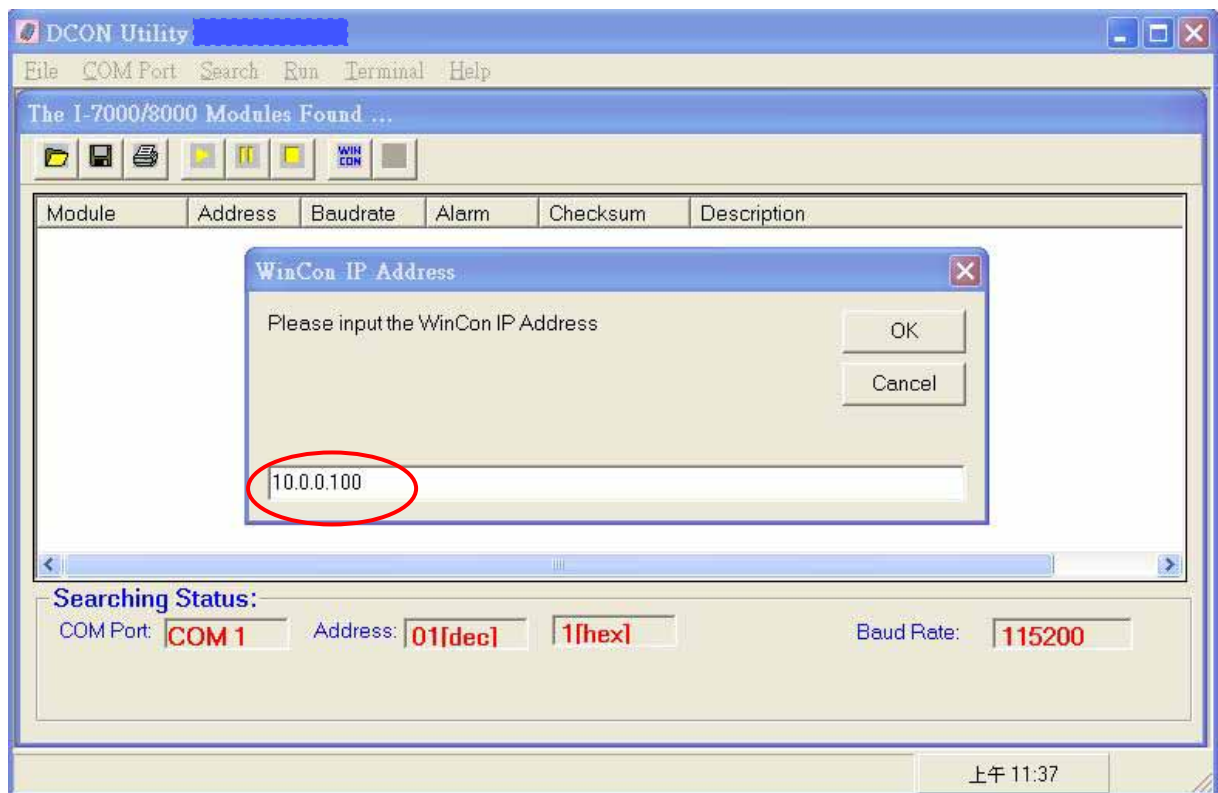


| DB-9-1                          |      | DB9-2 |                                 |
|---------------------------------|------|-------|---------------------------------|
| Receive Data                    | 2    | 3     | Transmit Data                   |
| Transmit Data                   | 3    | 2     | Receive Data                    |
| Data Terminal Ready             | 4    | 6、 1  | Data Set Ready 、 Carrier Detect |
| Signal Ground                   | 5    | 5     | Signal Ground                   |
| Data Set Ready 、 Carrier Detect | 6、 1 | 4     | Data Terminal Ready             |
| Request to Send                 | 7    | 8     | Clear to Send                   |
| Clear to Send                   | 8    | 7     | Request to Send                 |

2. To confirm the DCON\_CE\_V201.exe in the folder of WinCon-8000  
**\\CompactFlash\\ICPDAS\\Tools**
3. To execute **DCON\_Utility V4.4.2 Beta4(or later vision)** on PC and press the **connective button of Telnet** to open the **DCON\_CE\_V201** (WinCon-8000)。

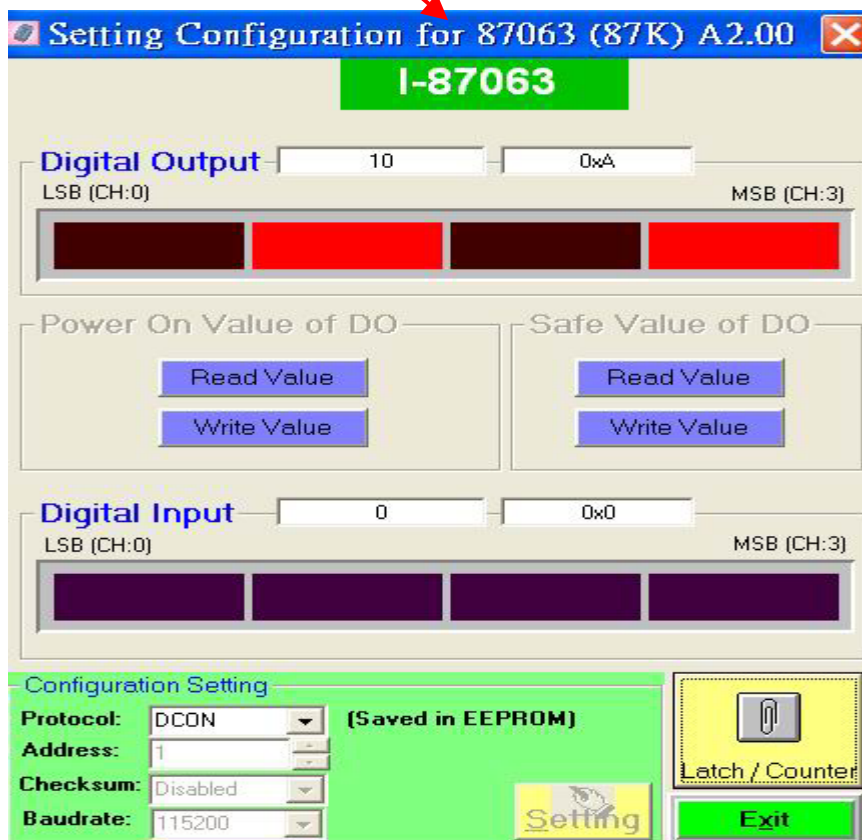
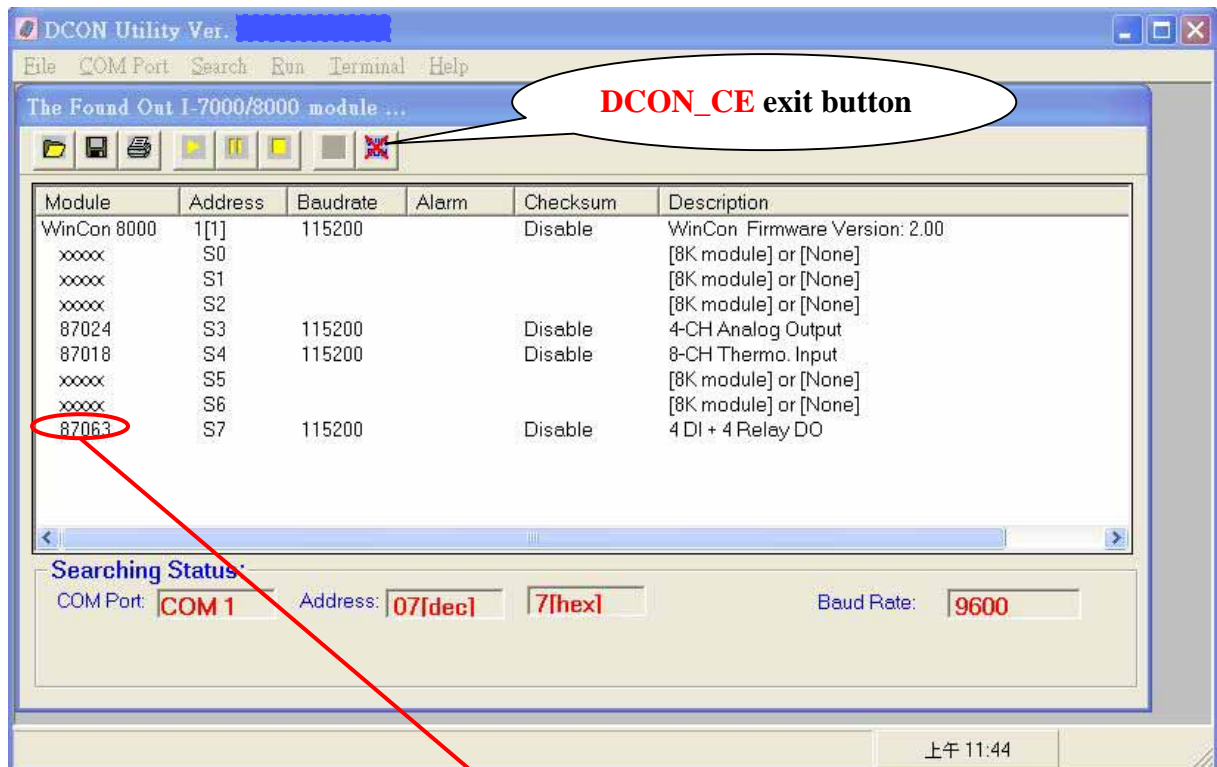


4. To input the **address of IP** of WinCon-8000.



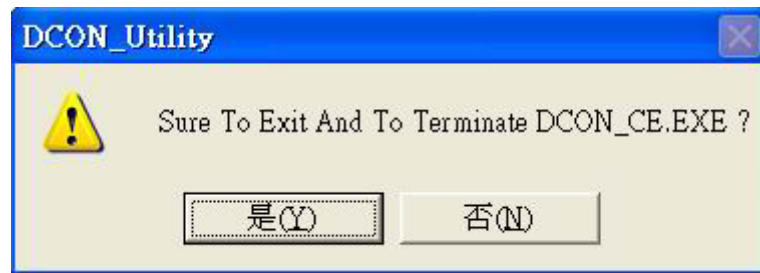
5. After connecting the WinCon-8000 , refer to the manual of the

DCON\_Utility to use , please.



6. To press the exit button of DCON\_CE and it can close the

DCON\_CE\_V201.exe of WinCon-8000。 Moreover , it will exit automatically when the DCON\_Utility does not work during the programs automatically scan in **thirty minutes**。



Please operate the methods according to the steps。 If you find the abnormal situation , you can close the DCON\_Utility first and then power ON/OFF WinCon8000。

Web Download :

- 1) DCON\_Utility (PC side) → [ftp://ftp.icpdas.com/pub/cd/8000cd/napdos/driver/dcon\\_utility/dcon\\_utility\\_patch\\_4/](ftp://ftp.icpdas.com/pub/cd/8000cd/napdos/driver/dcon_utility/dcon_utility_patch_4/)
- 2) DCON\_CE (WinCon) → <http://www.icpdas.com/products/wincon/winconutility.htm>

Finally you may react the questions to [service@icpdas.com](mailto:service@icpdas.com) , please。 Thank you !