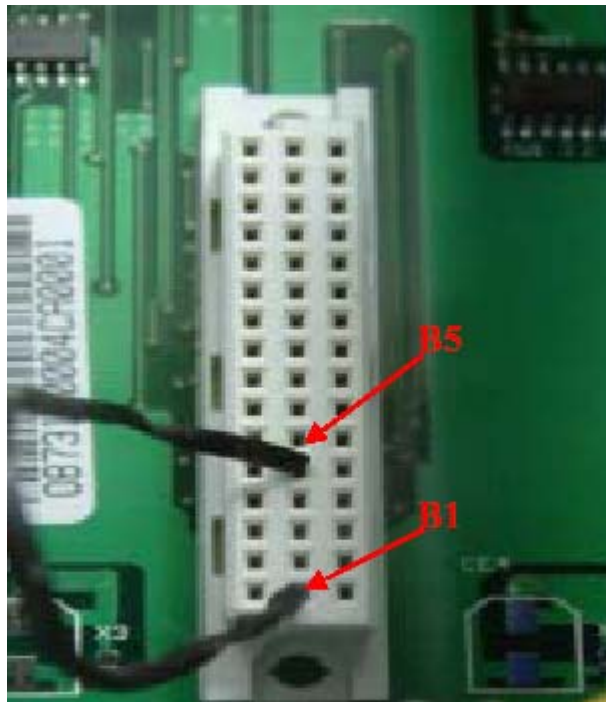


## How to download WinCon OS image with Eshell?

### 1.Preparation:

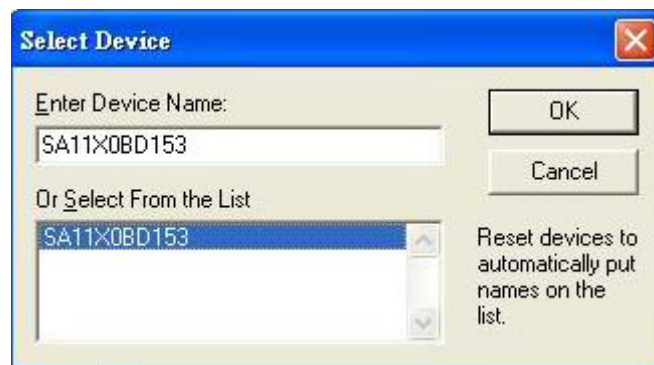
Short any slot short B1-B5 pin on I/O connector and turn on power of WinCon.



2. Connect Ethernet cable to WinCon and power-on WinCon

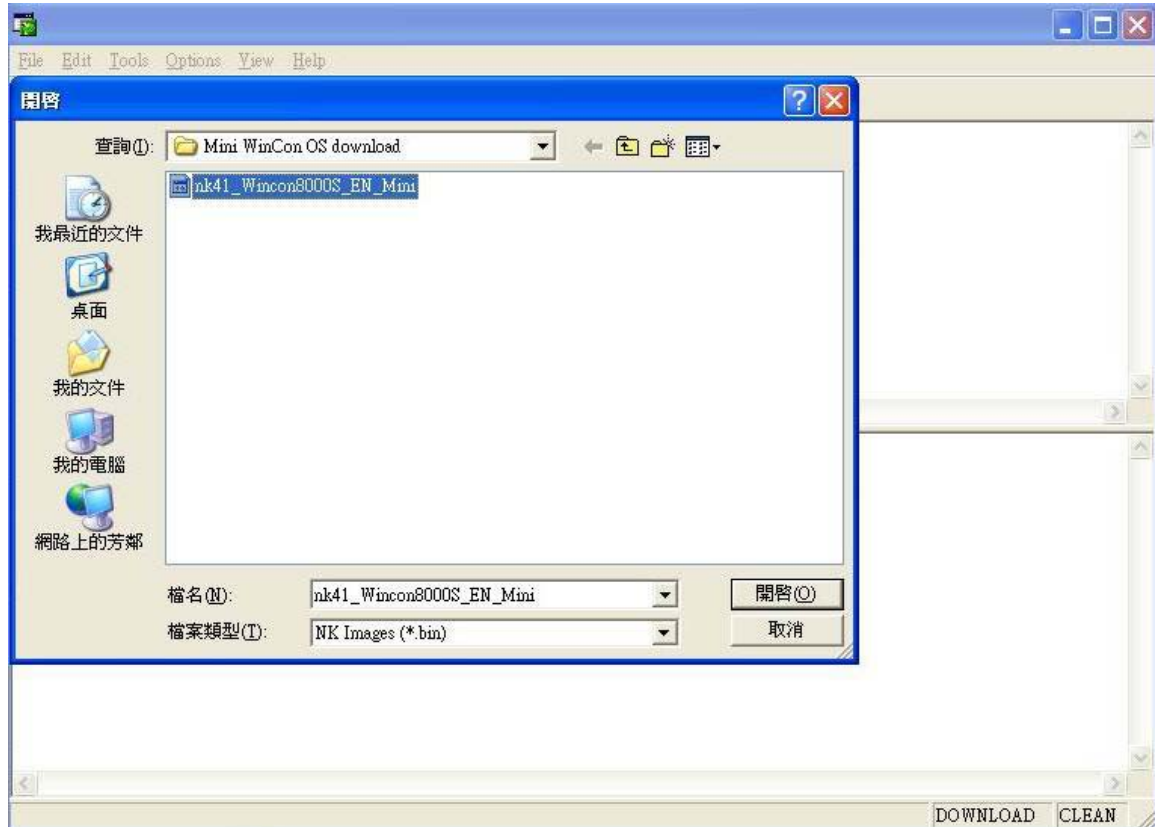
3. Run Eshell.exe and Eshell will find connected device. (For example, SA11X0BD153)

4. Choose device

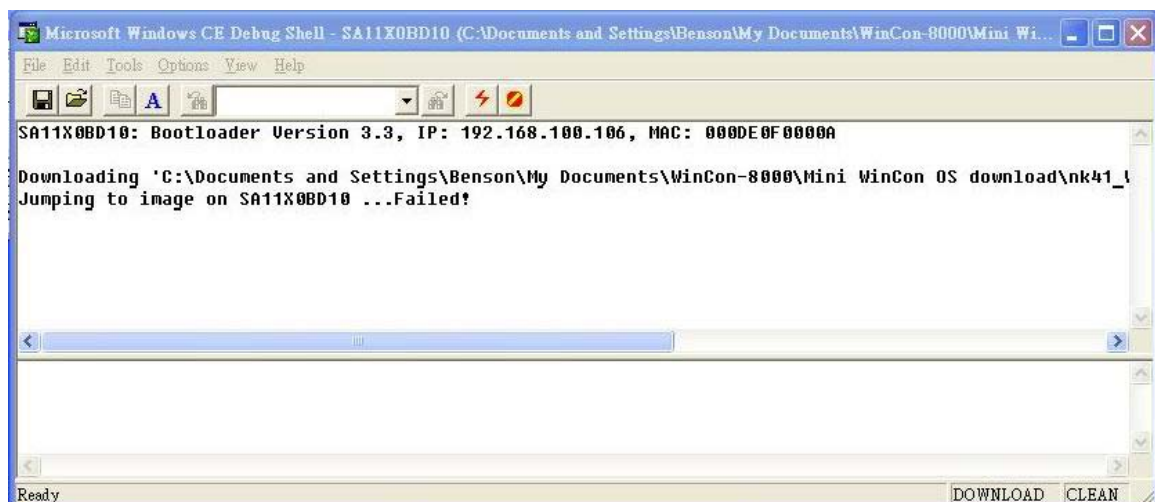


5. Click "OK" button to select OS image.

6. Choose os image (For example, nk41\_Wincon8000S\_EN\_Mini.bin)



7. Download OS to WinCon SDRAM complete.( **Please ignore the error message "Jumping to image on SA11XXXXX...Failed"**)



8. If you have connected debug port of WinCon , please unplug the jumping wire and reset the power of WinCon after seeing **"Flash download successful!"**

```
Verifying ...Done
Block 44/54 Programing ..... Done!
Verifying ...Done
Block 45/54 Programing ..... Done!
Verifying ...Done
Block 46/54 Programing ..... Done!
Verifying ...Done
Block 47/54 Programing ..... Done!
Verifying ...Done
Block 48/54 Programing ..... Done!
Verifying ...Done
Block 49/54 Programing ..... Done!
Verifying ...Done
Block 50/54 Programing ..... Done!
Verifying ...Done
Block 51/54 Programing ..... Done!
Verifying ...Done
Block 52/54 Programing ..... Done!
Verifying ...Done
Block 53/54 Programing ..... Done!
Verifying ...Done
Block 54/54 Programing ..... Done!
Verifying ...Done
Flash Download successful !!
```

If you didn't connect to WinCon debug port, please be patient and wait **15~20** min then unplug the jumping wire .

9. Unzipped ICPDAS\_DEC0804.zip (download link:

[http://www.icpdas.com/products/PAC/wincon-8000/Download/download\\_Compact%20Flash.htm](http://www.icpdas.com/products/PAC/wincon-8000/Download/download_Compact%20Flash.htm)) and copy it to compact flash .

10. Restart WinCon , and use WinCon utility to download CORRECT OS image. For OS image download to WinCon, please refer to “**How to upgrade OS image of Wincon-8000 by WinCon Utility?** “ in the following link (<http://www.icpdas.com/products/wincon/howtouse.htm>).