

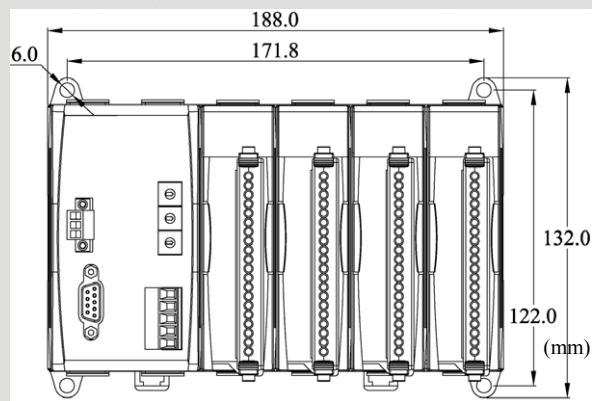


# DeviceNet Series Products

## DeviceNet Remote I/O Unit with 4 Expansion Slots



CAN-8424



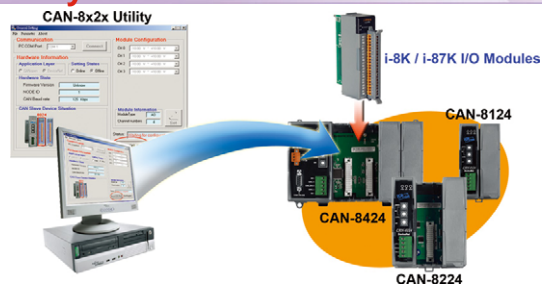
Dimensions

The CAN-8424 main unit based on the modular design offers many good features to the users and provides more flexibility in data acquisition and control system. In addition, ICP DAS also presents a CAN-8424 Utility tool to allow users to configure and create the EDS file for the specific IO modules plugged in. Therefore, users can easily apply the CAN-8424 in various DeviceNet network. In advance, the hot-swap function is provided with the high profile I-87K I/O modules for maintaining the system easily.

### Features

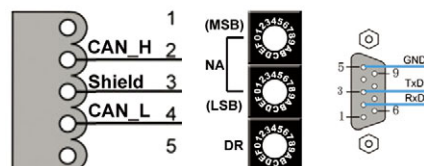
- DeviceNet Version: Volume I & II, Release 2.0
- Number of Nodes: 64 max.
- Baud Rate: 125K, 250K, 500K
- Support Message Groups: Predefined Master/Slave Connection set (Group 2 only Server)
- I/O Operating Modes: Poll, Bit-Strobe, Change of State / Cyclic
- Device Heartbeat & Shutdown Message
- Produce EDS file Dynamically
- No. of Fragment I/O: 128 Bytes max. (Input / Output)
- MAC ID Setting by Rotary Switch
- Baud Rate Setting by Rotary Switch
- Status LED: NET, MOD, PWR
- Support Hot Swap and Auto-Configuration for high profile I-87K I/O Modules

### Utility Features

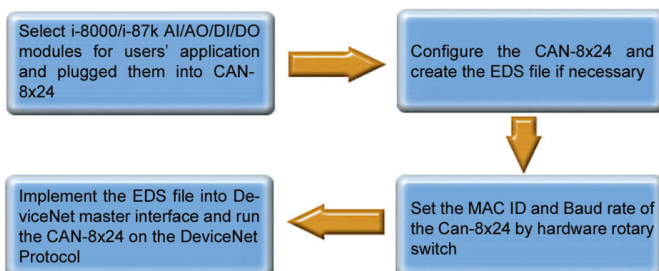


- Support I-8k/I-87K modules
- Show I/O modules configuration
- Show Application and assembly objects configuration
- Support IO connection path setting
- Support EDS file creating

### Pin Assignments



### Design Flowchart



NA: Node Address

DR: Device Rate

Rotary Switch Value(DR)	Baud rate (K BPS)
0	125
1	250
2	500

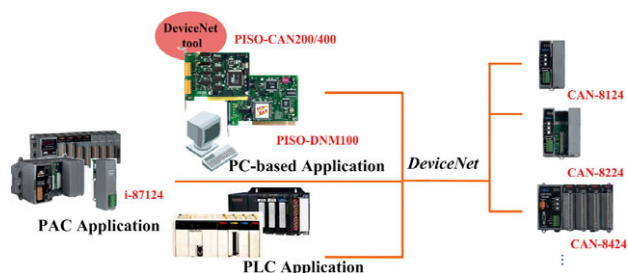
## Hardware Specifications

Item	CAN-8424
CPU	80186, 80MHz
SRAM	512K bytes
Flash Memory	512K bytes
EEPROM	2048 bytes ( can be up to 128K bytes or change to 2K/8K FRAM )
NVRAM	32 bytes
Real Time Clock	16 bit; Year-2000 compliance; seconds, minutes, hours, date of the month; month, year, valid up from 1980 to 2079
Watch Dog Timer	CPU Built-in
COM 1	RS232 (Configuration port)
CAN Port	5-pin screw terminal connector
CAN Controller	Phillips SJA1000T CAN Controller
CAN Transceiver	Phillips 82C250 CAN Transceiver
CAN Protocol	Predefined Master/Slave Connection set
Isolated	2500Vrms on CAN side
Terminal Resister	120Ω terminal resister selected by jumper
CAN Rate	125K, 250K, 500K
I/O Expansion Slot	4 slots
LED indicators	PWR, NET, MOD
Power Supply	20W unregulated +10Vdc to +30Vdc
Power Consumption	2.5 W
Operating Temp.	-25°C to 75°C
Storage Temp.	-35°C to 85°C
Humidity	5~95%
Dimensions	188mm x 91mm x 132mm (W x D x H)

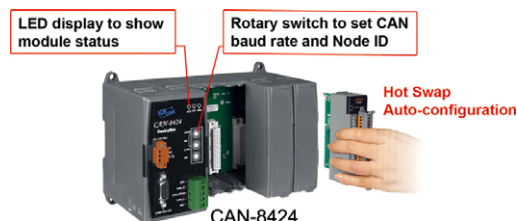
## LED Indicators

LED	Description
PWR	Indicate the status of power supply
MOD	Indicate the main or modules status
NET	This LED indicates the DeviceNet network status

## Application



## Hot Swap & Auto-configuration



## Ordering Information

CAN-8424	DeviceNet remote I/O unit with 4 empty slots
----------	--