

# **CANopen Master Utility**

## **Warranty**

All products manufactured by ICP DAS are warranted against defective materials for a period of one year from the date of delivery to the original purchaser.

## **Warning**

ICP DAS assume no liability for damages consequent to the use of this product. ICP DAS reserves the right to change this manual at any time without notice. The information furnished by ICP DAS is believed to be accurate and reliable. However, no responsibility is assumed by ICP DAS for its use, nor for any infringements of patents or other rights of third parties resulting from its use.

## **Copyright**

Copyright 2011 by ICP DAS. All rights are reserved.

## **Trademark**

The names used for identification only maybe registered trademarks of their respective companies.

# Tables of Content

CANopen Master Utility.....	1
1. Introduction.....	3
2. About CPMUtility .....	4
3. Features.....	5
4. Start CPMUtility .....	6
4.1. Module .....	6
4.2. Add Node & Load EDS .....	7
4.3. Master Part.....	9
4.4. Node Part .....	10
4.5. SYNC Part .....	11
4.6. EMCY Part.....	12
4.7. SDO Part.....	13
4.8. RxPDO Part.....	14
4.9. TxPDO Part.....	16
4.10. Demo Part for CAN-2000C and PM-3000-CPS .....	18

# 1. Introduction

For CANopen master devices, ICP DAS provide a friendly CANopen master utility tool to help users to test and setting CANopen slave devices easily. This utility tool can be thought as a simply CANopen master tool for controlling CANopen devices on the CANopen network. It provides several functions, such as NMT protocol, SYNC protocol, EMCY protocol, SDO protocol, PDO protocol, and so forth. The operation principle will be addressed in the following section.

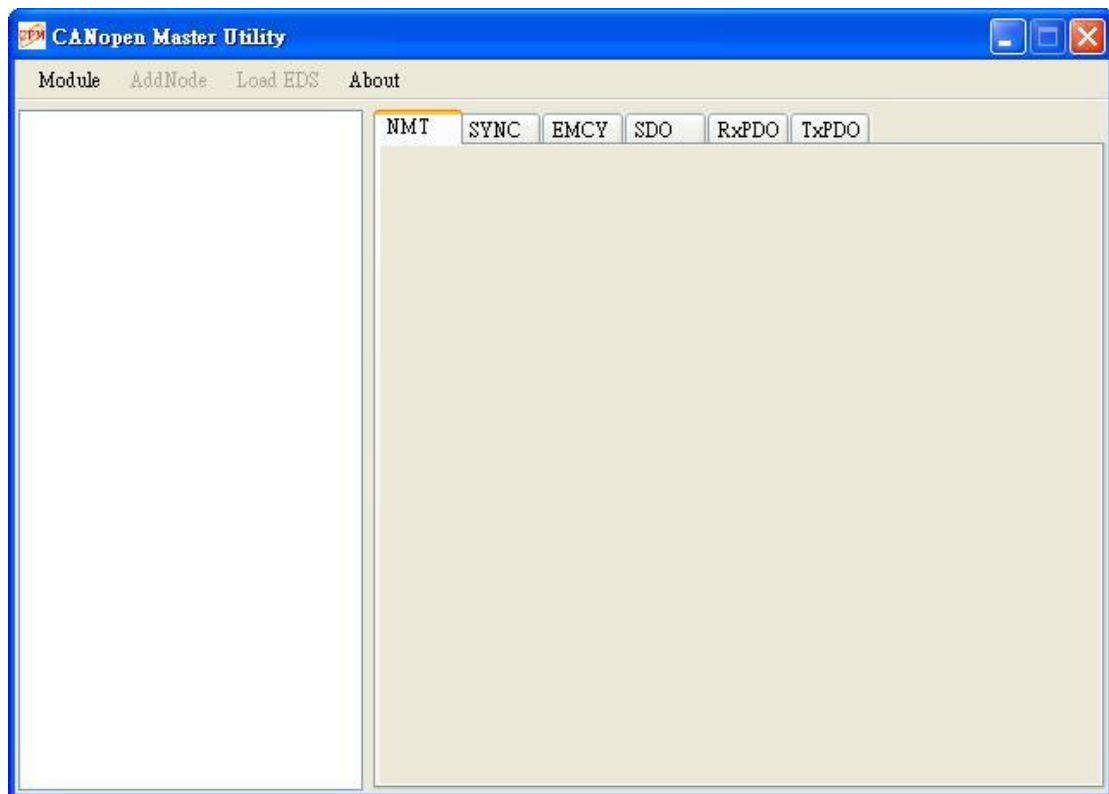


Figure 1.1 CANopen Master Utility

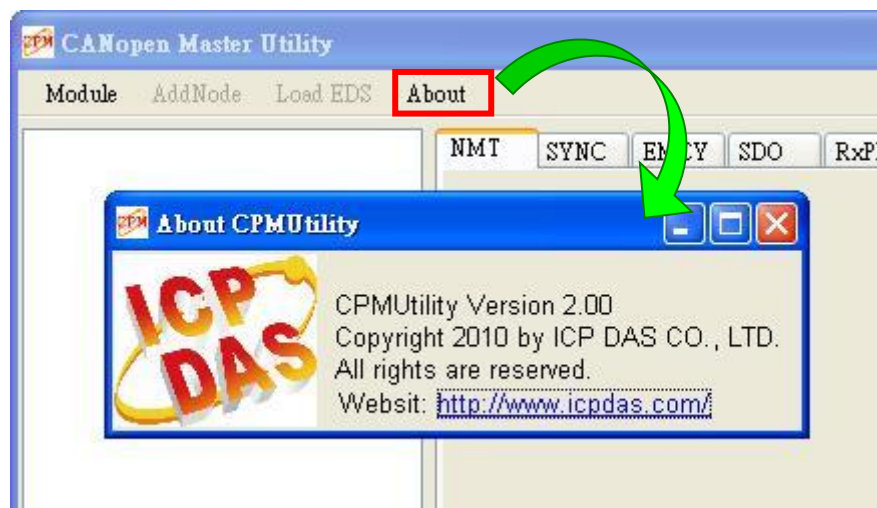
## 2. About CPMUtility

The CANopen master utility (CPMUtility.exe) now supports WinCE5.0/CE6.0/XPe and Win2K/XP/Vista/7 with 32-bit system. In CE5.0/CE6.0/XPe, there are I-8123W and I-87123, in Windows 32-bit system, there are PISO-CPM100(U), I-7565-CPM and PISO-CAN/PEX-CAN/PCM-CAN CPM Library (the firmware and driver of all above CANopen master products need version 2.00 later).

The new version CPMUtility (v2.00 later) is different from the old version (v1.xx). This document is only for the new version CPMUtility. About the old, please refer to the web:

[http://ftp.icpdas.com/pub/cd/fieldbus\\_cd/canopen/master/piso-cpm100/oldver](http://ftp.icpdas.com/pub/cd/fieldbus_cd/canopen/master/piso-cpm100/oldver).

The version information of the CPMUtility can be checked in the about dialog as the figure 2.1.



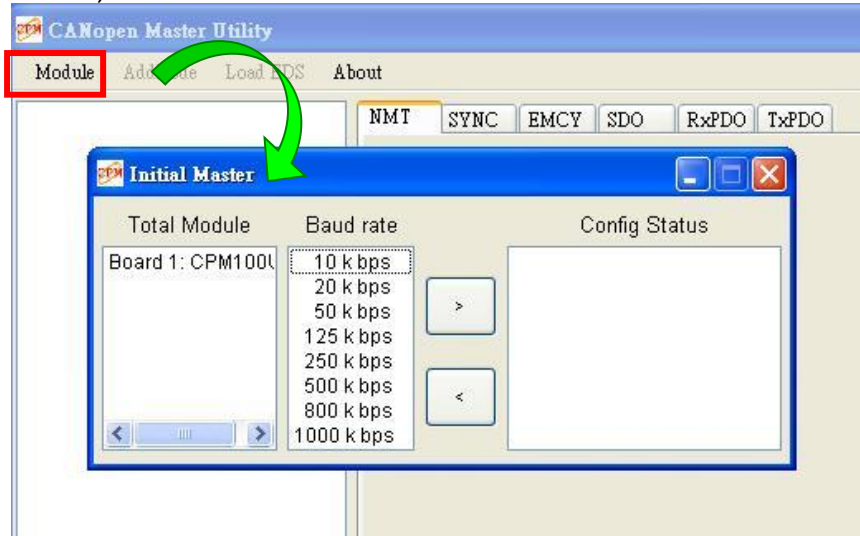
### 3. Features

1. Auto-scan all the CANopen master that the CPMUtility has supported.
2. Auto-scan all the CANopen slave devices on the CANopen network.
3. Support EDS file.
4. Dynamic PDO object setting easily.
5. Node Guarding Event and Heartbeat Event detection.
6. EMCY message receiving.
7. Maximum 5 SYNC message producers per CANopen master.
8. Support I-8123W, I-87123, PISO-CPM100(U), I-7565-CPM and PISO-CAN/PEX-CAN/PCM-CAN CPM Library for version 2.00 later.
9. Support OS: WinCE5.0/CE6.0/XPe and Win2K/XP/Vista/7 32-bit system.

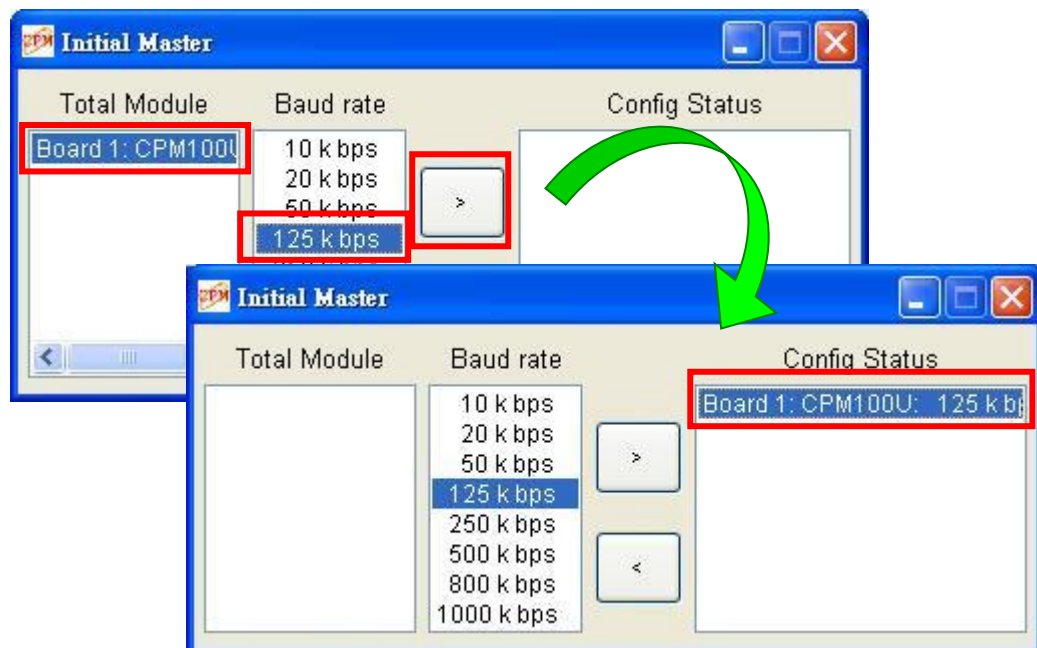
## 4. Start CPMUtility

### 4.1. Module

The first step after executing the CPMUtility, users need to click the “Module” item on the toolbar. Then the utility will show all the CANopen master devices that the utility has supported now on the host device (such as PC or WinPAC).



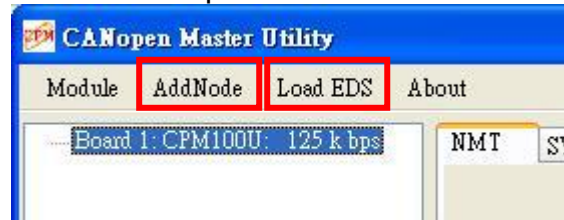
Users can select the CANopen master and baud rate that want to be activated and click the “>” button. Then the CANopen master device will be initialized with the communication baud rate and list on the “Config Status” list.



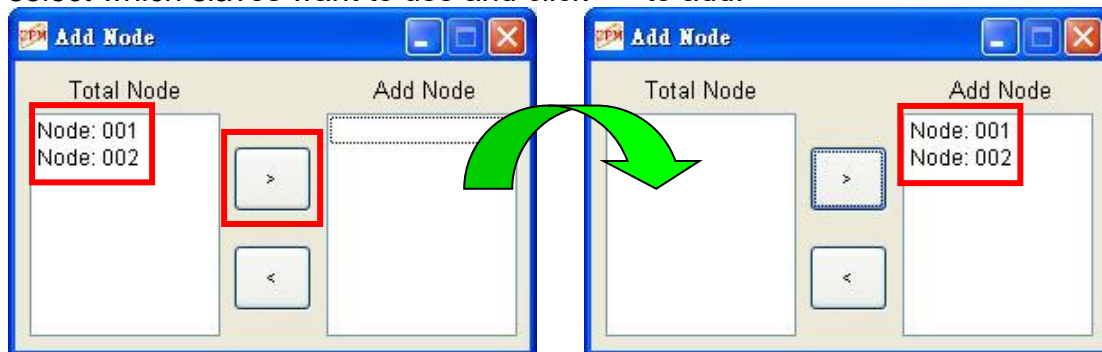
If users want to remove the activated CANopen master device, users just select the CANopen master on the “Config Status” list and click the “<” button.

## 4.2. Add Node & Load EDS

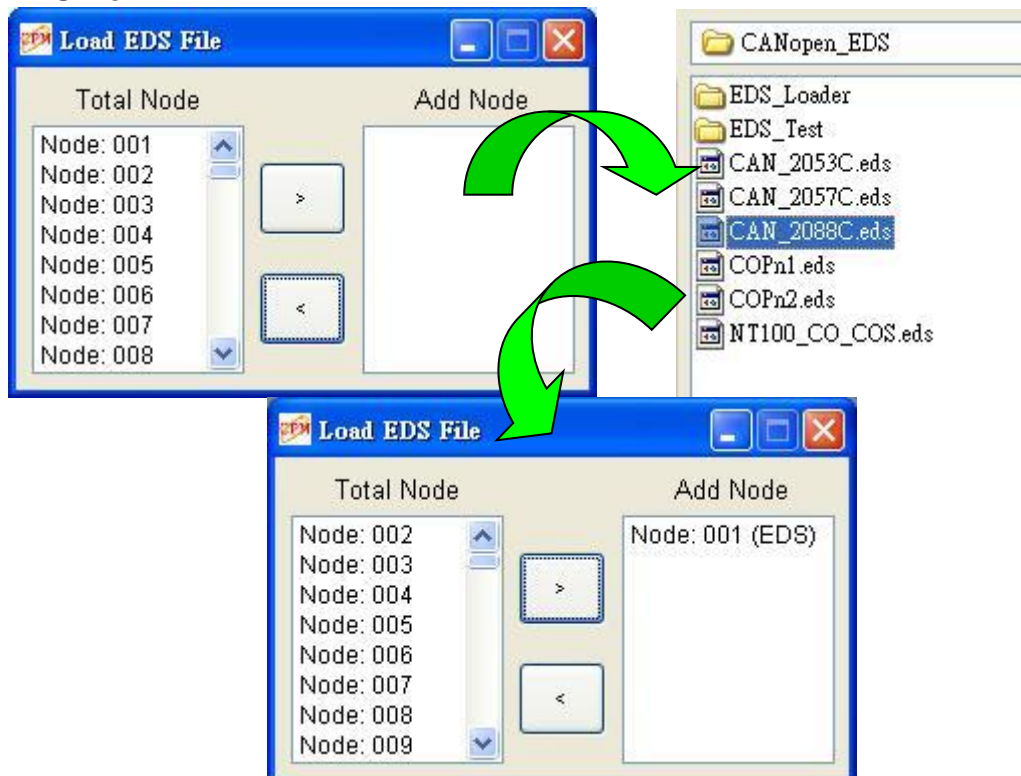
After initializing the CANopen master device, users can click “Add Node” or “Load EDS” item to add CANopen slaves to the master.



When users use “Add Node”, the master will scan its CANopen network first and list all the slaves at “Total Node” list on the network. Then users can select which slaves want to use and click “>” to add.

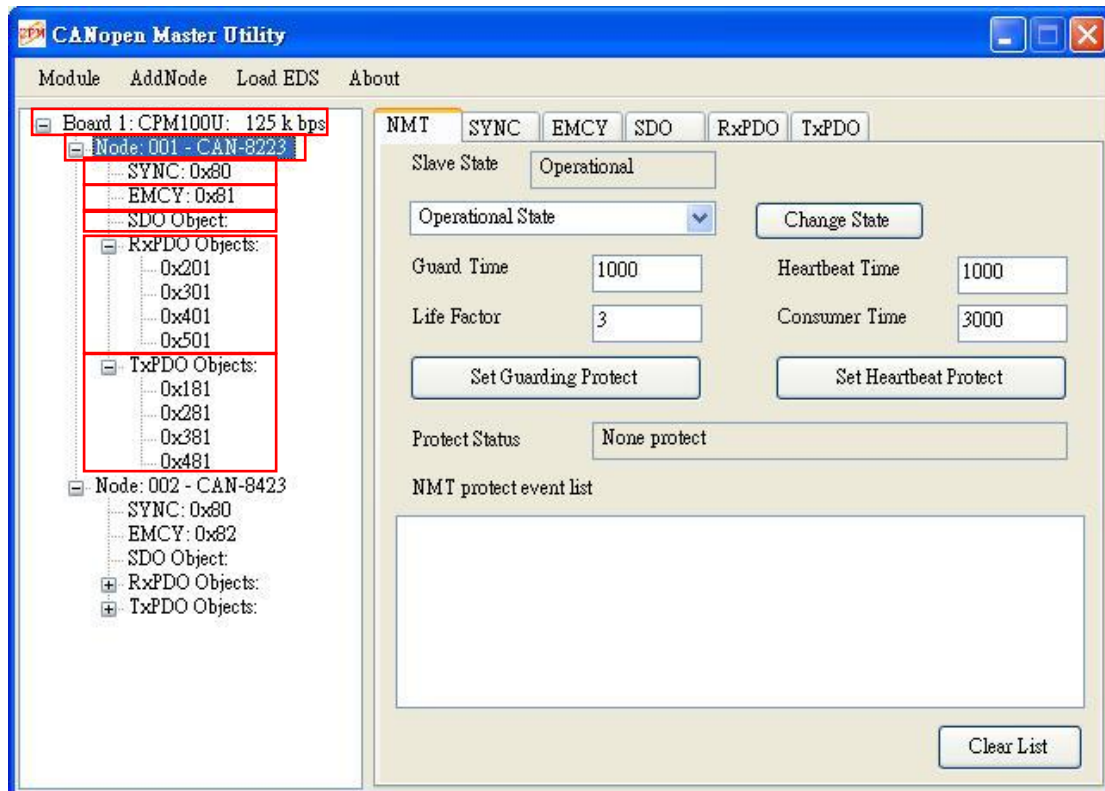


If users use “Load EDS” function, it will list 127 nodes for selecting. When users select a node and click “>”, it will pop up a windows for select the node’s EDS file.



If users want to remove the CANopen slave which has been added, users just select the node in the “Add Node” list and click the “<” button.

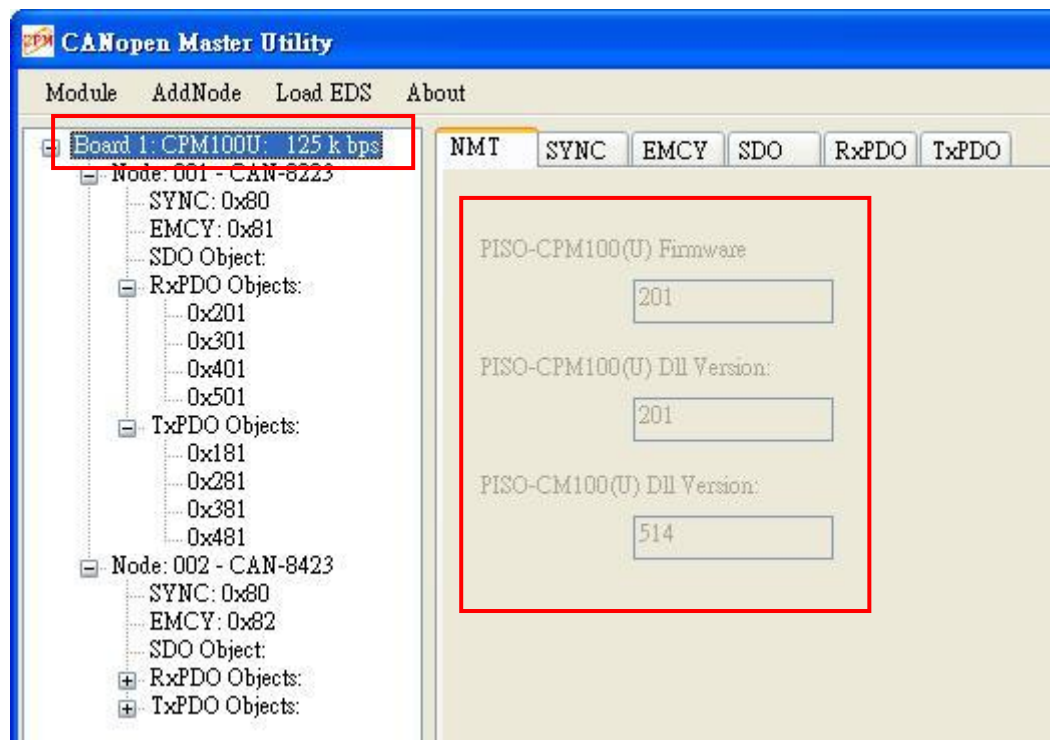
The following picture is the main form after adding slaves. In this example, there are two slaves shown on the tree view list. There are 7 parts, Master, Node, SYNC, EMCY, SDO, RxPDO, and TxPDO below.





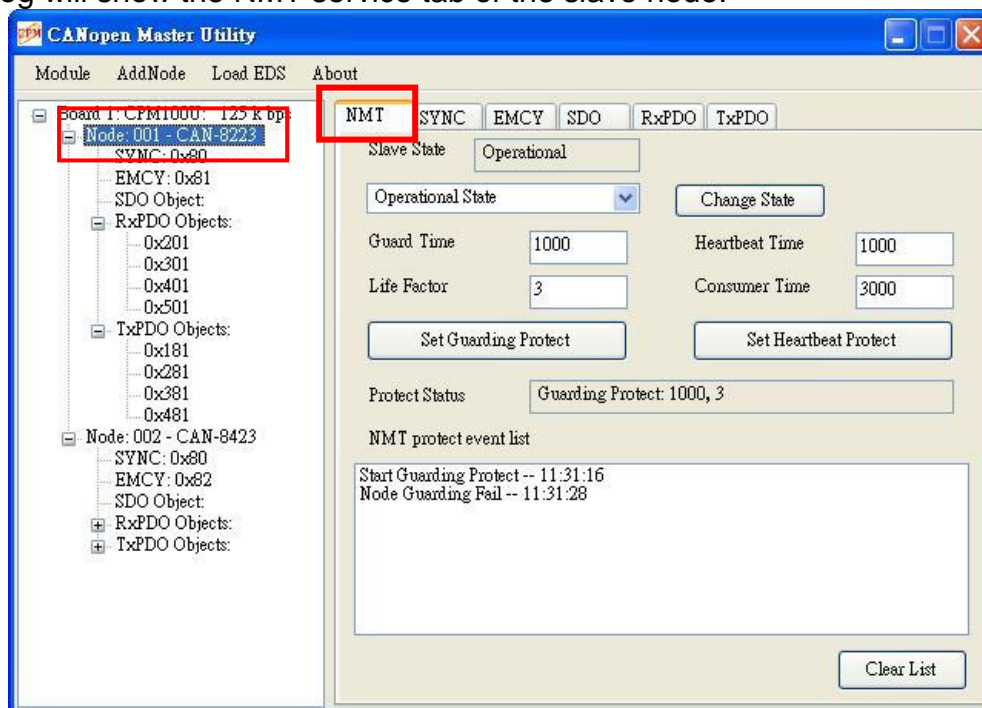
## 4.3. Master Part

Selecting the Master item such as “Board 1: CPM100U: ...” in the tree list, the right dialog will show all the related driver and firmware version. Users can check the driver or firmware version of their master device if necessary.

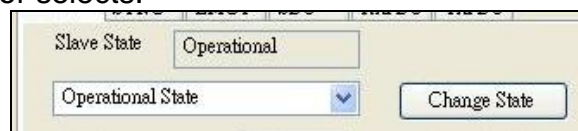


## 4.4. Node Part

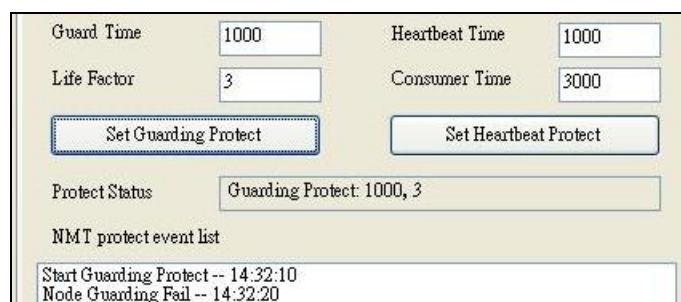
Selecting the Node item such as “Node: 001 ...” in the tree list, the right dialog will show the NMT service tab of the slave node.



In the NMT service tab, users can get the slave state in “Slave State” text box. And if users want to change the slave state, just select the state combo box and click “Change State” to set it. There are five states, Operational State, Pre-operational State, Stop State, Node Reset, and Communication Reset in state combo box for selects.

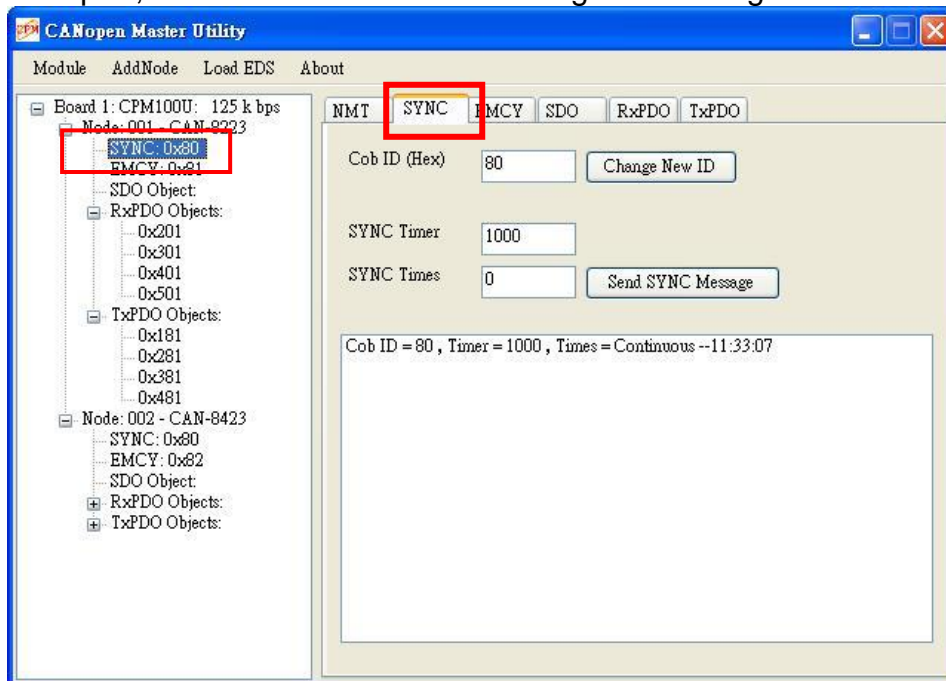


The NMT service tab provides two NMT Error Control protocol, Node Guarding and Heartbeat. Users can click “Set Guarding Protect” button to start Node Guarding protect or click “Set Heartbeat Protect” to start Heartbeat protect. If one of these two protect mechanisms has been used, the protect status will show in the “Protect Status” text box. And if the Node Guarding Event or Heartbeat Event has occurred, the event will store in the “NMT protect event list” list.

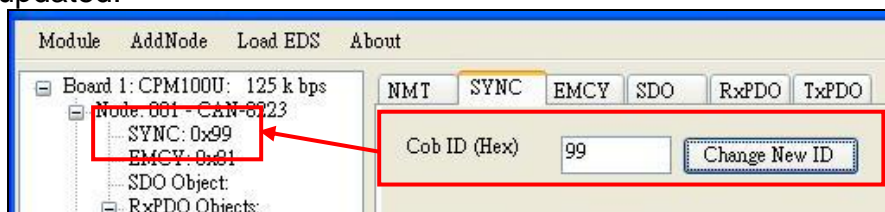


## 4.5. SYNC Part

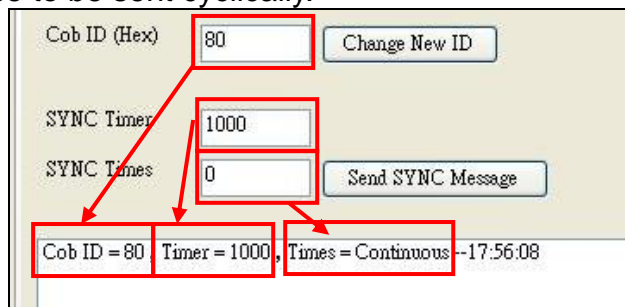
In this part, users can send SYNC message and change SYNC ID.



If users want to change the SYNC ID for the node, input the new SYNC ID in the “Cob ID” text box and click “Change New ID” button, the SYNC COB-ID will be updated.

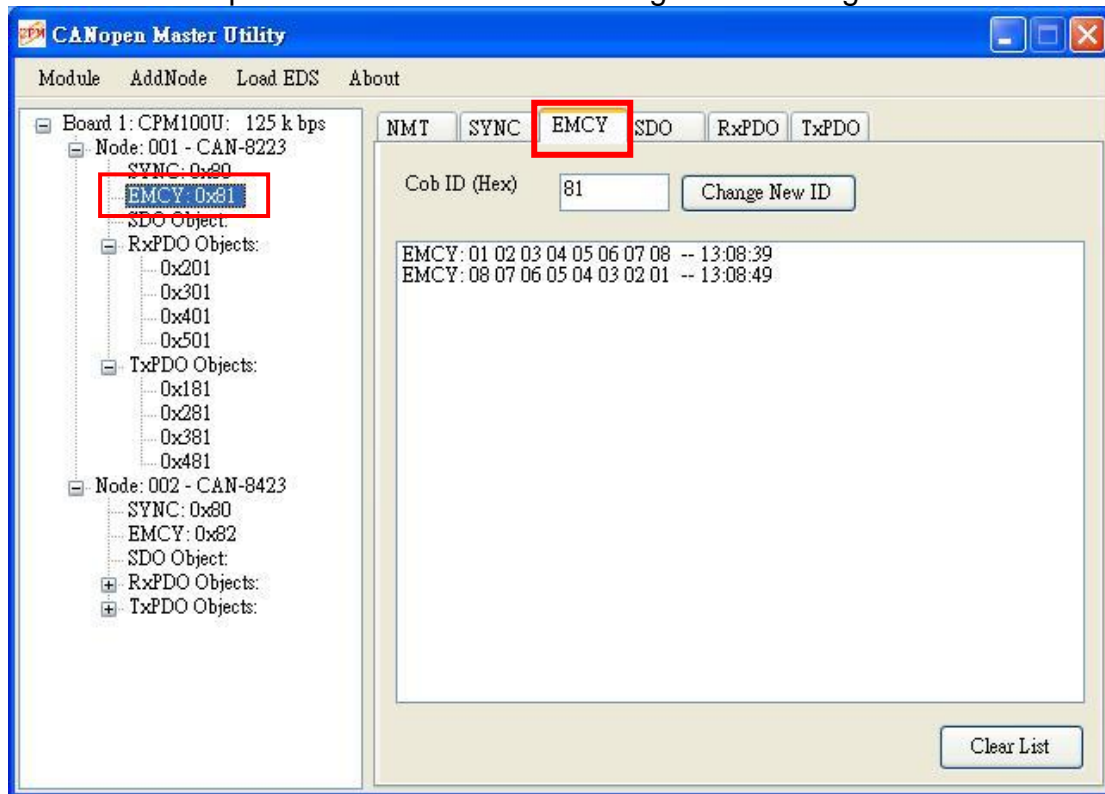


Key in the SYNC timer in the “SYNC Timer” text box and times in the “SYNC Times” text box, then click “Send SYNC” to send SYNC message. If the “SYNC Timer” is 0, the SYNC message will be stopped. If the “SYNC Timer” is more than 0, the function will send SYNC message per “SYNC Timer” millisecond until finish the parameter “SYNC Times”. When the “SYNC Times” is set to 0, the function will send SYNC message continuously until set “SYNC Timer” to 0. Users can set at most 5 SYNC messages with different SYNC ID per master device to be sent cyclically.

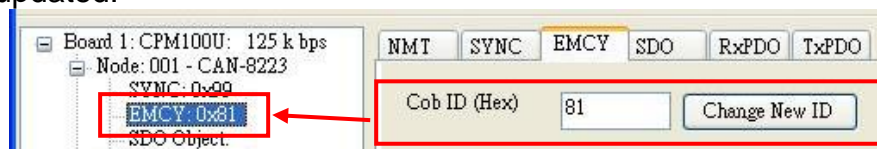


## 4.6. EMCY Part

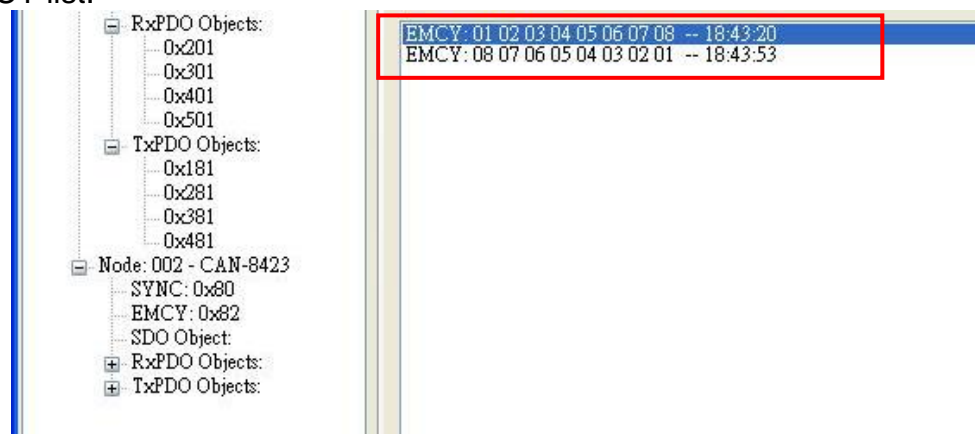
The EMCY part can list the EMCY messages and change EMCY ID.



If users want to change the EMCY ID for the node, input the new EMCY ID in the “Cob ID” text box and click “Change New ID” button, the EMCY COB-ID will be updated.

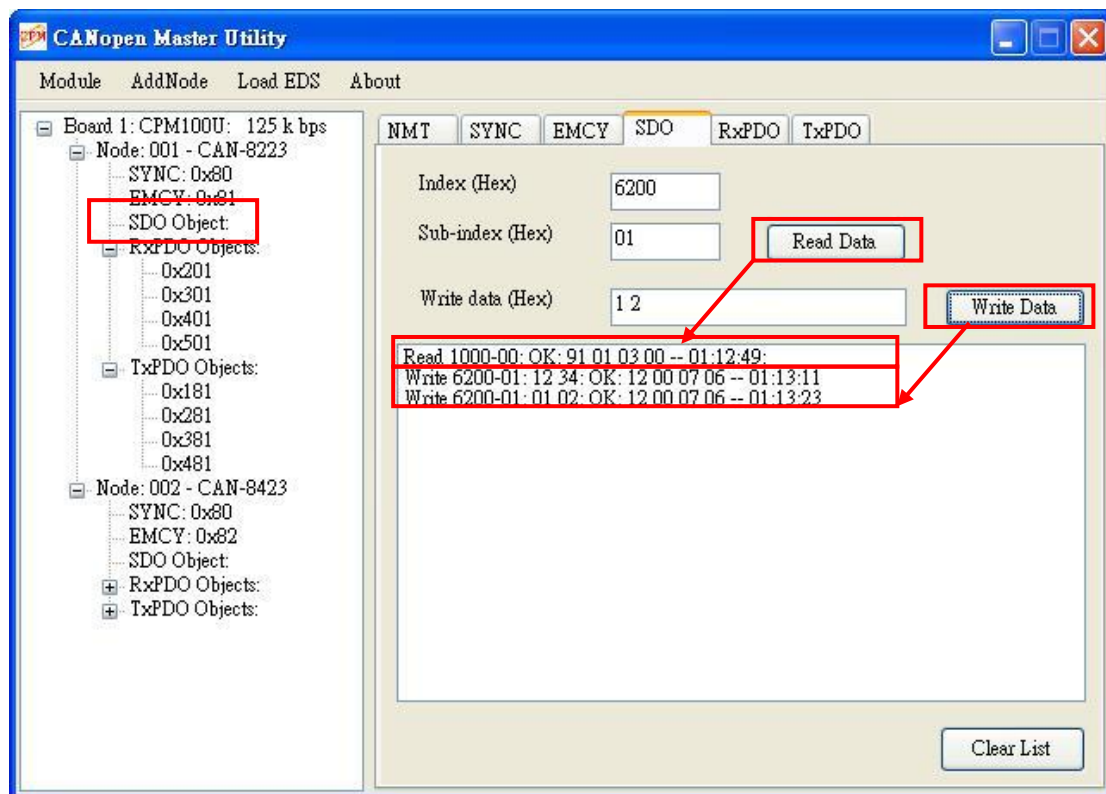


All the EMCY message produces from the slave node will be show in the EMCY list.



## 4.7. SDO Part

The SDO Communication page has two functions, “Read Data” and “Write Data”. After editing the “Index” and “Sub-index” text box, users can click “Read Data” to read the object data with the index and sub-index object address, or click “Write Data” to write the data of the “Write data” text box to the object. Note that, the data will be parted with space in the “Write data” text box. For example, if the data “1 2” in the “Write data” text box, it will be detected that first data byte is 0x01 and second data byte is 0x02. But if the data “12” in the “Write data” text box, it will be detected to only one data byte 0x12.

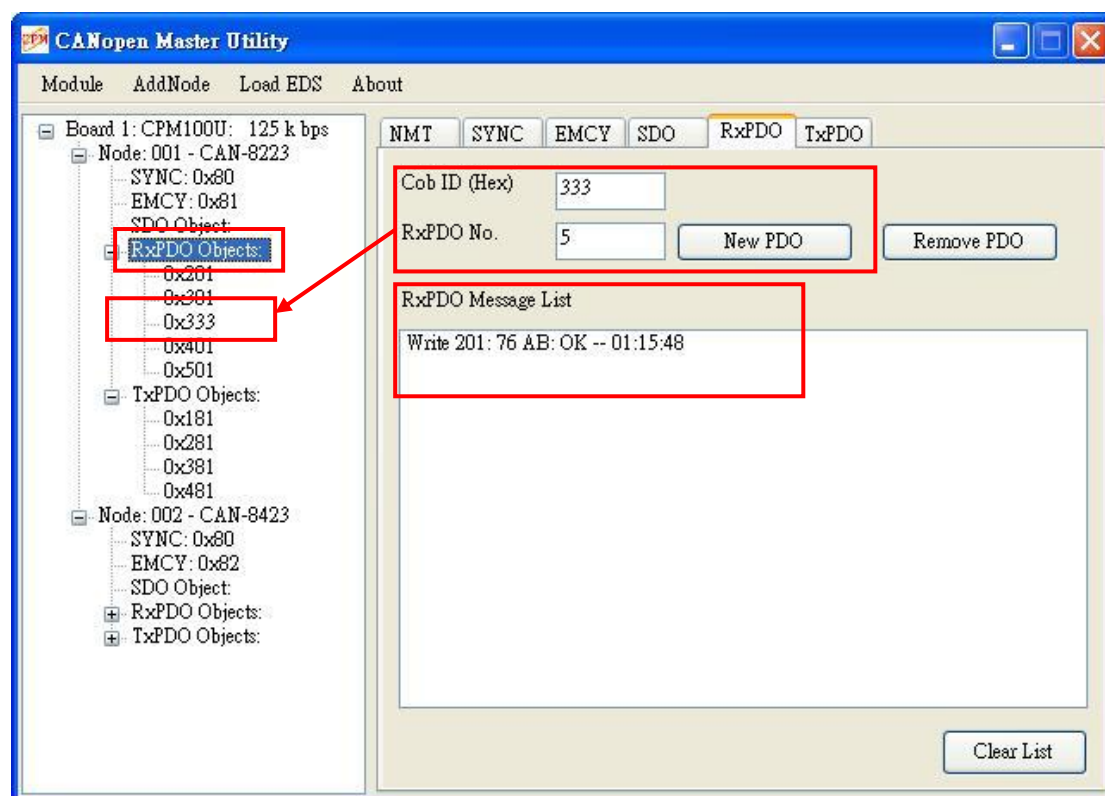


## 4.8. RxPDO Part

The CPM Utility is divided into two forms, Main Form and Child Form, in this part. And the descriptions for these two forms are as below.

### Main Form

Selecting the “RxPDO Object” item in the tree list and the RxPDO main form will show on the right dialog. In main form, users can click “New PDO” button to add a new RxPDO with the “Cob ID” in the “RxPDO No.” RxPDO object or users can click “Remove PDO” button to remove an original RxPDO with the “Cob ID”. For example, if users input “333” in “Cob ID” text box and “5” in “RxPDO No.” text box then click “New PDO” button. The slave node will add a new RxPDO with COB-ID 0x333 in 5<sup>th</sup> RxPDO object. And if users input “333” in “Cob ID” text box then click “Remove PDO” button. The COB-ID 0x333 of RxPDO will be removed. Besides, all the RxPDO messages of the slave node will be shown on the “RxPDO Message List” of the main form list.



### Child Form

Selecting the “RxPDO COB-ID” item (such as “0x201”) in the tree list and the RxPDO child form will show on the right dialog. In child form, users can change COB-ID, Transmission Type, PDO mapping list, and send message for the RxPDO object.

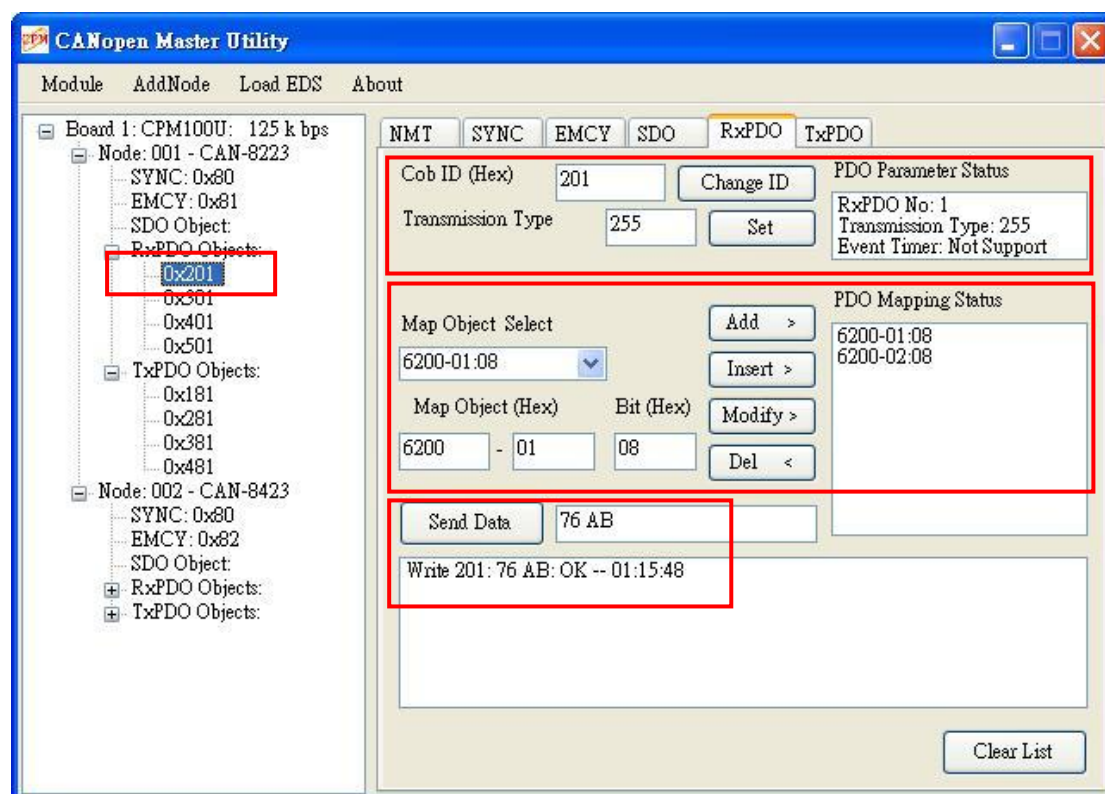
For changing COB-ID, users input a new COB-ID into the “Cob ID” text box such as “444” and click “Change ID” button. The original RxPDO COB-ID 0x201 will be changed to 0x444.



For setting Transmission Type, users can input number 1 ~ 255 in the “Transmission Type” text box and click the near “Set” button to change it if the CANopen slave supports this type.

After adding the slave node, users can click every RxPDO COB-ID object in the tree list to check the default RxPDO mapping information. For example, only the 0x201 object has two mapping entry, “6200-01:08” and “6200-02:08”, and others are empty. The “6200-01:08” means that the PDO object’s first entry is for the object index 0x6200 and sub-index 0x01, and the entry’s data length is 0x08 bits. The “6200-02:08” is as above but the sub-index is 0x02. If the default mapping is not satisfy with use, users can use the “Add”, “Insert”, “Modify”, “Del” buttons to change the PDO mapping. For add, insert, modify PDO mapping, users need to select the PDO mapping data in the “Map Object Select” combo box first. But if the mapping data that users want to use is not in the combo box, users can input it in the “Map Object” text box manually. After select or input the mapping data, users can click “Add”, “Insert”, or “Modify” button to add, insert, or modify the PDO mapping data. And if users want to remove a PDO mapping data from the PDO object, select the mapping data in the “PDO mapping status” list and click “Del” button to remove it.

If users need to send an RxPDO data message, input the data in the “Send Data” text box and click the “Send Data” button to send it. Note that the data length of the send data must equal to the PDO object. For example, the PDO object has two mapping entries and the total data length are 16-bit (2-bytes), so the sending data must has two bytes which is parted with space.

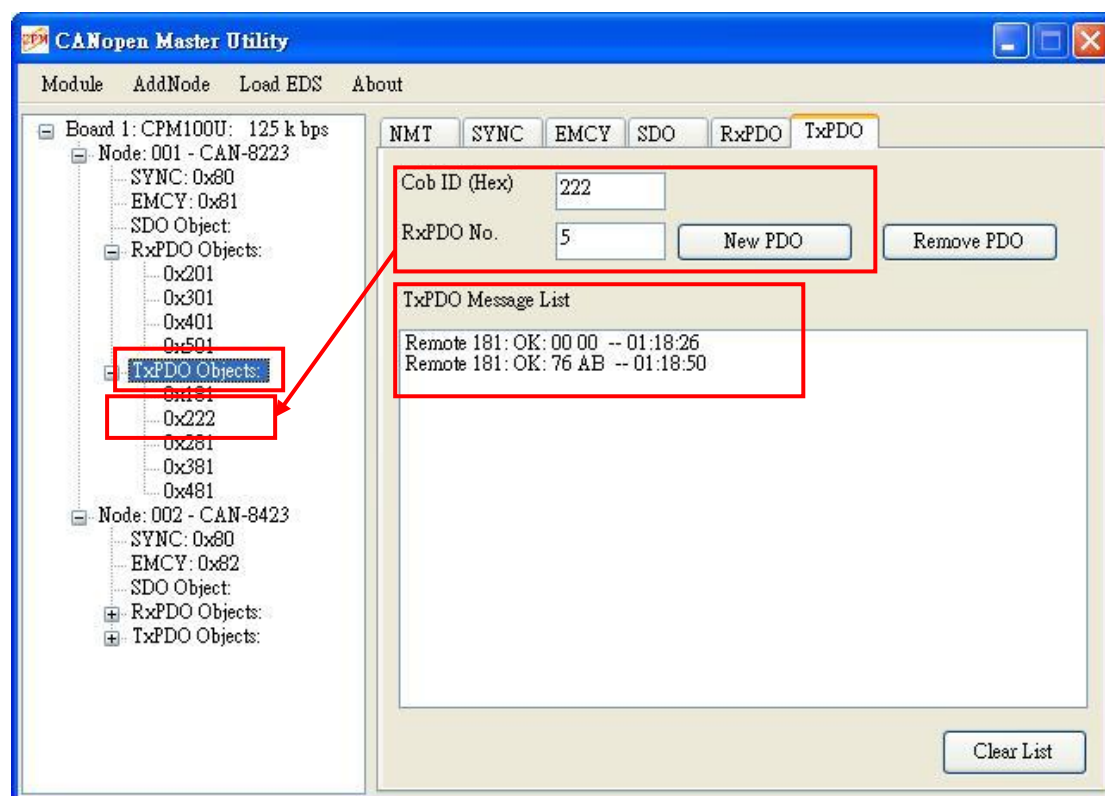


## 4.9. TxPDO Part

The CPM Utility is divided into two forms, Main Form and Child Form, in this part. And the descriptions for these two forms are as below.

### Main Form

Selecting the “TxPDO Object” item in the tree list and the TxPDO main form will show on the right dialog. In main form, users can click “New PDO” button to add a new TxPDO with the “Cob ID” in the “TxPDO No.” TxPDO object or users can click “Remove PDO” button to remove an original TxPDO with the “Cob ID”. For example, if users input “222” in “Cob ID” text box and “5” in “TxPDO No.” text box then click “New PDO” button. The slave node will add a new TxPDO with COB-ID 0x222 in 5<sup>th</sup> TxPDO object. And if users input “222” in “Cob ID” text box then click “Remove PDO” button. The COB-ID 0x222 of TxPDO will be removed. Besides, all the TxPDO messages of the slave node will be shown on the “TxPDO Message List” list of the main form.



### Child Form

Selecting the “TxPDO COB-ID” item (such as “0x181”) in the tree list and the TxPDO child form will show on the right dialog. In child form, users can change COB-ID, Transmission Type, Event Timer, PDO mapping list, and send message for the TxPDO object.

For changing COB-ID, users input a new COB-ID into the “Cob ID” text box such as “234” and click “Change ID” button, the original TxPDO COB-ID 0x181 will be changed to 0x234.

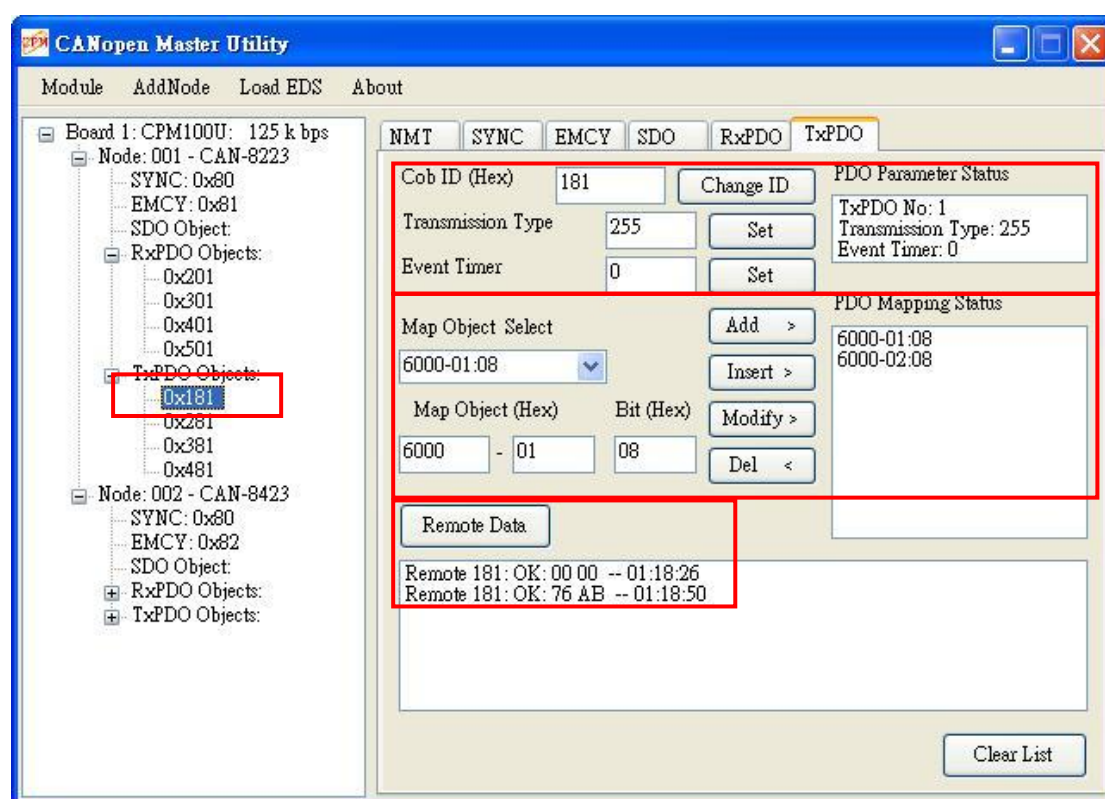


For setting Transmission Type, users can input number 1 ~ 255 in the “Transmission Type” text box and click the near “Set” button to change it if the CANopen slave supports this type.

If the CANopen slave supports the Event Timer function, users can input the timer value (1 ~ 65535) in the “Event Timer” text box and click the near “Set” button to set it.

After adding the slave node, users can click every TxPDO COB-ID object in the tree list to check the default TxPDO mapping information. For example, only the 0x181 object has two mapping entries, “6000-01:08” and “6000-02:08”, and the others are empty. The “6000-01:08” means that the PDO object’s first entry is for the object index 0x6000 and sub-index 0x01, and the entry’s data length is 0x08 bits. The “6000-02:08” is as above but the sub-index is 0x02. If the default mapping is not satisfy with use, users can use the “Add”, “Insert”, “Modify”, “Del” buttons to change the PDO mapping. For add, insert, modify PDO mapping, users need to select the PDO mapping data in the “Map Object Select” combo box first. If the mapping data that users want to use does not exist in the combo box, users can input it in the “Map Object” text box manually. After selecting or inputting the mapping data, users can click “Add”, “Insert”, or “Modify” button to add, insert, or modify the PDO mapping data. And if users want to remove a PDO mapping data from the PDO object, select the mapping data in the “PDO mapping status” list and click “Del” button to remove it.

If users want to get a TxPDO data message, need to click the “Remote Data” button to send a remote PDO message, and then the TxPDO message will be shown on the data list when the CANopen master received it.

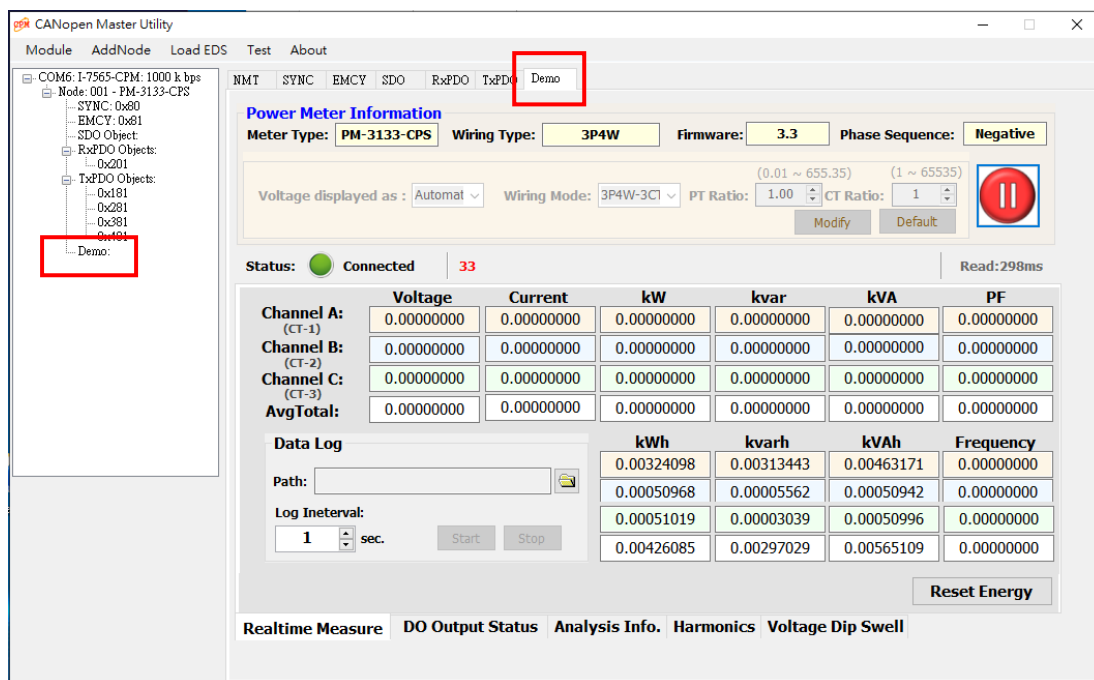


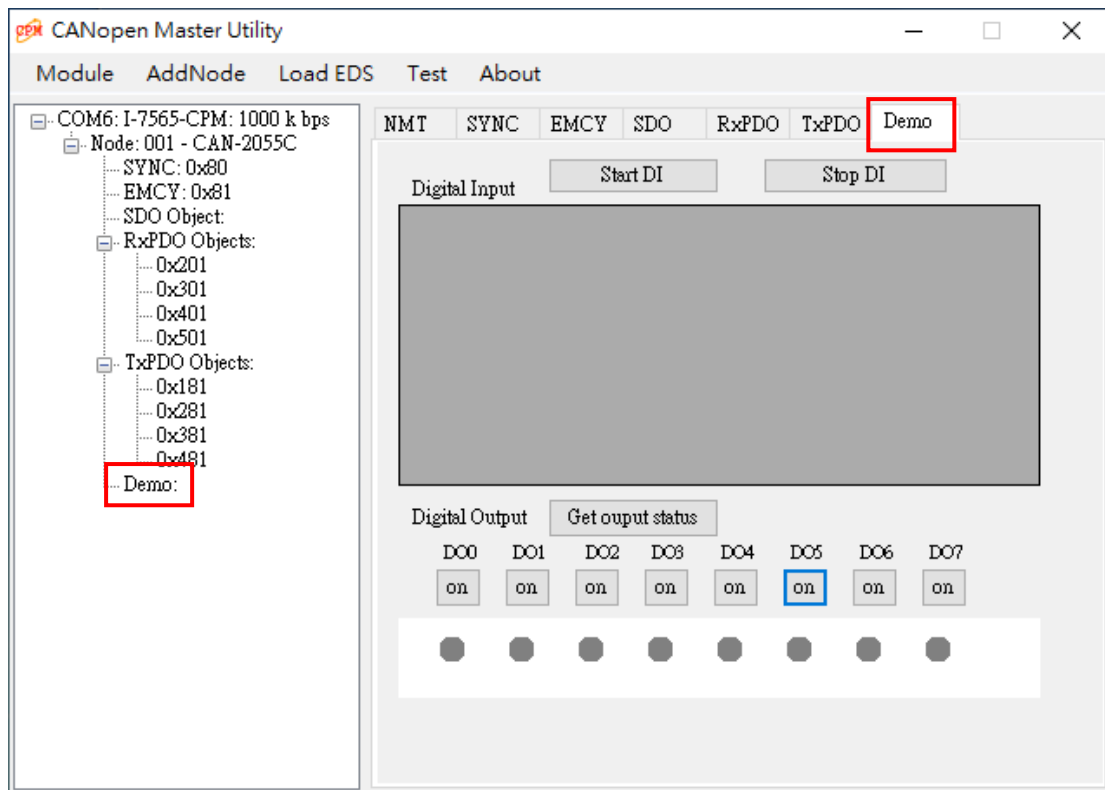
## 4.10. Demo Part for CAN-2000C and PM-3000-CPS

The CPM Utility version 2.50 or newer have the “Demo” page. User can use this page to operate the CAN-2000C series and PM-3000-CPS series modules.



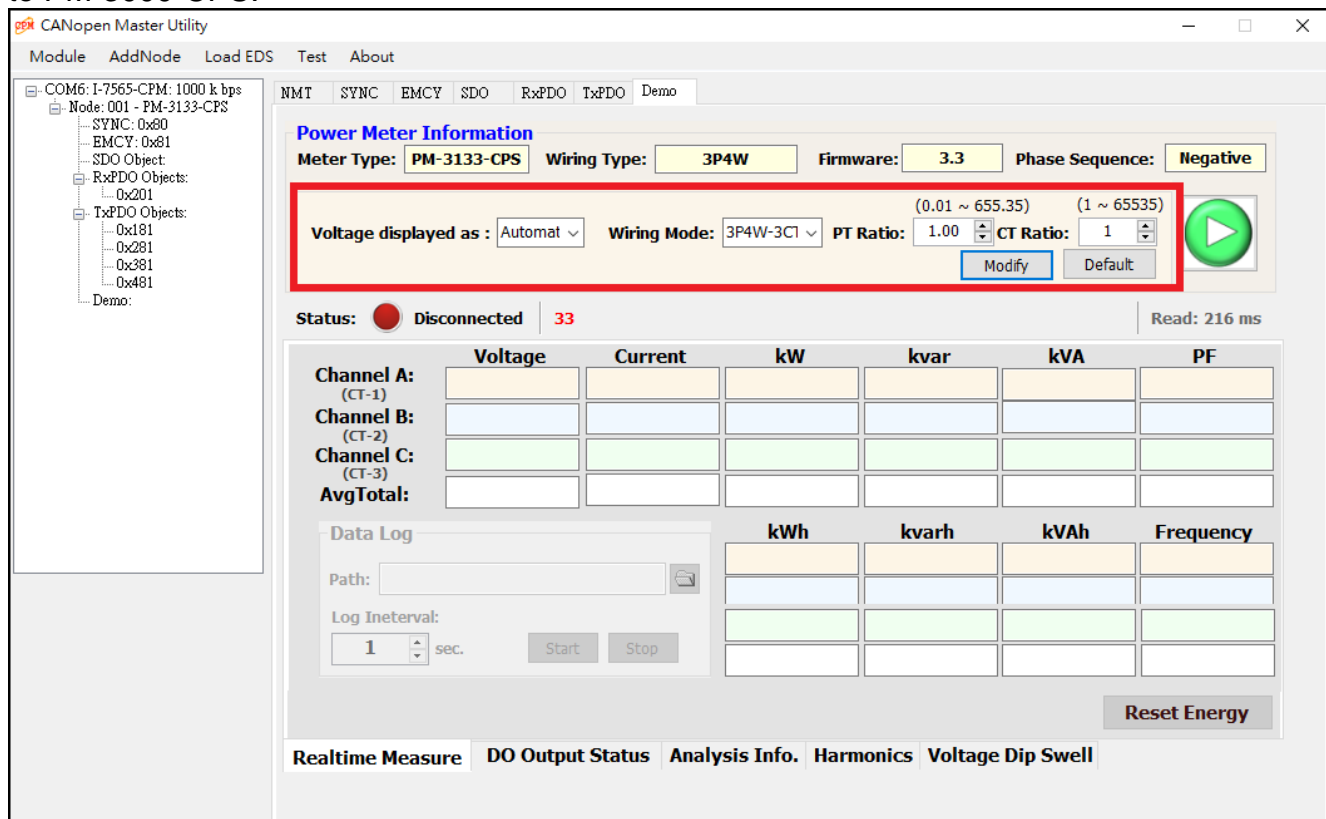
Selecting the “Demo” item in the tree list or the bookmark to start operating the module.






### **PM-3000-CPS series Power Meter:**

Complete the configuration, and click [Modify] to perform the change. You can check if the [phase sequence] is Positive or Negative. And, set proper [CT ratio] to PM-3000-CPS.



Click  to start monitor the real-time energy data.

CANopen Master Utility

Module AddNode Load EDS Test About

COM6: I-7565-CPM: 1000 k bps

- Node: 001 - PM-3133-CPS
  - SYNC: 0x80
  - EMCY: 0x81
  - SDO Object:
    - RxPDO Objects:
      - 0x201
    - TxPDO Objects:
      - 0x181
      - 0x281
      - 0x381
      - 0x481
  - Demo:

NMT SYNC EMCY SDO RxPDO TxPDO Demo

**Power Meter Information**

Meter Type: **PM-3133-CPS** Wiring Type: **3P4W** Firmware: **3.3** Phase Sequence: **Negative**

Voltage displayed as: **Automat** Wiring Mode: **3P4W-3C** PT Ratio: **1.00** CT Ratio: **1**

Modify Default

Status: **Connected** **33** Read: 298ms

	Voltage	Current	kW	kvar	kVA	PF
Channel A: (CT-1)	0.00000000	0.00000000	0.00000000	0.00000000	0.00000000	0.00000000
Channel B: (CT-2)	0.00000000	0.00000000	0.00000000	0.00000000	0.00000000	0.00000000
Channel C: (CT-3)	0.00000000	0.00000000	0.00000000	0.00000000	0.00000000	0.00000000
AvgTotal:	0.00000000	0.00000000	0.00000000	0.00000000	0.00000000	0.00000000

Data Log

Path:

Log Interval: **1** sec. Start Stop

	kWh	kvarh	kVAh	Frequency
	0.00324098	0.00313443	0.00463171	0.00000000
	0.00050968	0.00005562	0.00050942	0.00000000
	0.00051019	0.00003039	0.00050996	0.00000000
	0.00426085	0.00297029	0.00565109	0.00000000

Reset Energy

Realtime Measure DO Output Status Analysis Info. Harmonics Voltage Dip Swell