

How to upgrade the PAC's Win-GRAF Driver ?

For updating add-on functions, I/O boards or other purposes, ICP DAS may release new PAC 's Win-GRAF driver in the future. Users can get the latest version that's available for different PAC models from the following Web .

http://www.icpdas.com/root/product/solutions/softplc_based_on_pac/win-graf/download/wingraf-driver.html

The below steps is using for RPAC-2658M. Please follow the steps to upgrade the new driver into your PAC.

Step 1:

- a. Prepare a flash drive




- b. Format you flash drive with fat32 format



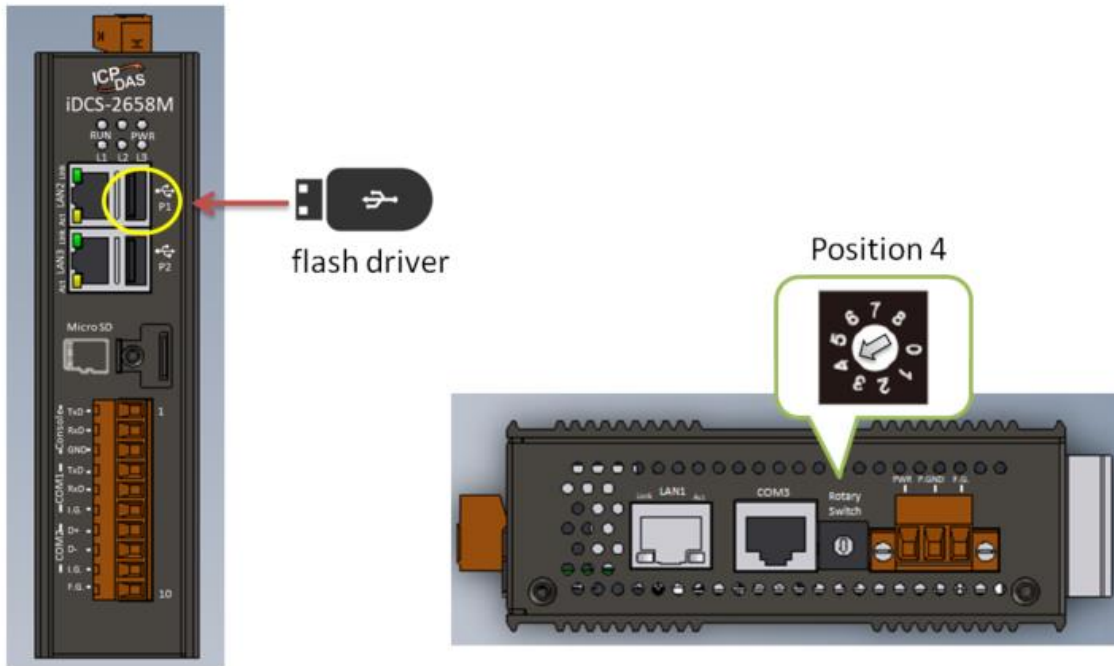
c. Put patch file to your flash drive

Patch file is patch_vxx.xx.zip

 patch_v0.10.zip

Step 2:

Plug your flash driver to USB port of RPAC-2658M and switch the rotary switch to position 4.



Step 3:

Turn the power on and the firmware update process will be executed automatically. When the firmware update is completed, the L1, L2, L3 LED will be on.



Step 4:

Power off and unplug your flash drive

Step 5:

Power on again. It will show new firmware version in the console port and web page. It means firmware update is successful.

```
Welcome to RPAC-2658M (armv7l-Linux-4.1.15+gb63f3f5@ttymlx1/115200)

Copyright (C) 2021 ICP DAS Corp. <www.icpdas.com>
Last update : Ver=0.11 Time=20210122-22:44:46

RPAC-2658M login: █
```



[Login](#)
[User Account](#)
[WG_Mgmt](#)
[Information](#)

[Reboot](#)

Information

OS Version :	4.1.15+gb63f3f5 #32 SMP PREEMPT Thu Sep 24 01:54:50 PDT 2020
APP Version :	0.11
WinGRAF Version :	V0.24.20210120
WinGRAF Info :	Project: No application, Extra_port: None
Eth1 IP :	192.168.255.1
Eth1 Mask :	255.255.0.0
Eth1 Mac :	00:0D:E0:C0:00:1F
Eth2 IP :	172.16.255.142
Eth2 Mask :	255.240.0.0
Eth2 Mac :	00:0D:E0:C0:00:20
Eth3 IP :	10.0.255.1
Eth3 Mask :	255.255.0.0
Eth3 Mac :	00:0D:E0:C0:00:21

<http://www.icpdas.com>

