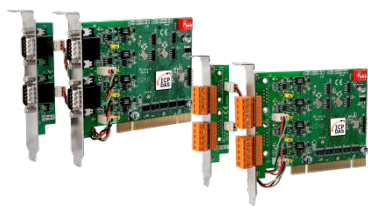


Packing List

In addition to this guide, the package includes the following items:



PISO-CAN400U-FD-T or
PISO-CAN400U-FD-D x 1

Resources

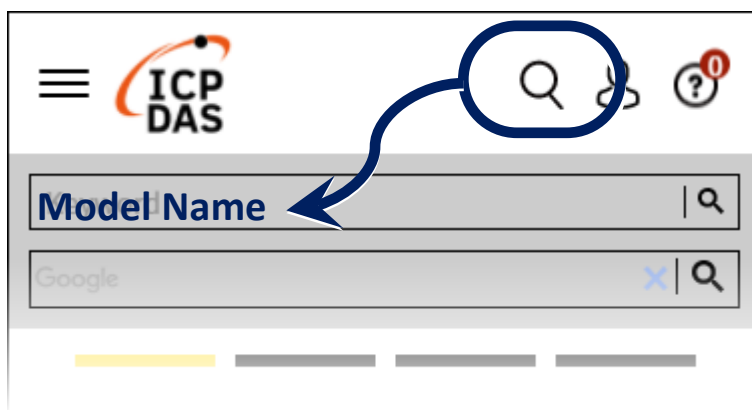
How to search for drivers, manuals and spec information on ICP DAS website.

Technical Support

service@icpdas.com

www.icpdas.com

- For Mobile Web



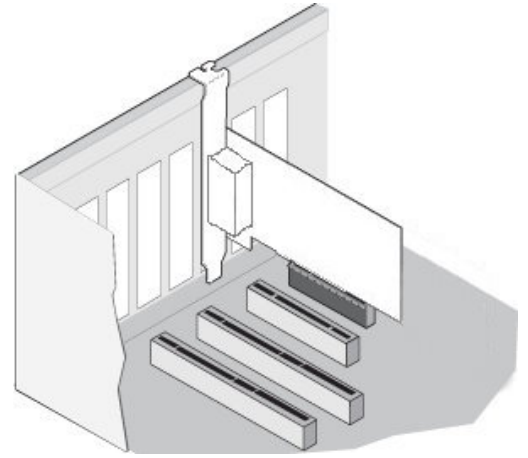
- For Desktop Web



1

Installing the Hardware on PC

- Step 1:** Shut down and power off the computer.
- Step 2:** Remove all the covers from the computer.
- Step 3:** Select an unused PCI slot.
- Step 4:** Carefully insert the PISO-CAN400U-FD series board into the PCI slot and secure the board in place.
- Step 5:** Replace the covers on the computer.
- Step 6:** Reconnect the power supply and power on the computer.
- Step 7:** Once the computer reboots, follow section 2 to install the windows driver of PISO-CAN400U-FD series board.



2

Installing Windows Driver

Step 1: Download or locate the Windows driver.

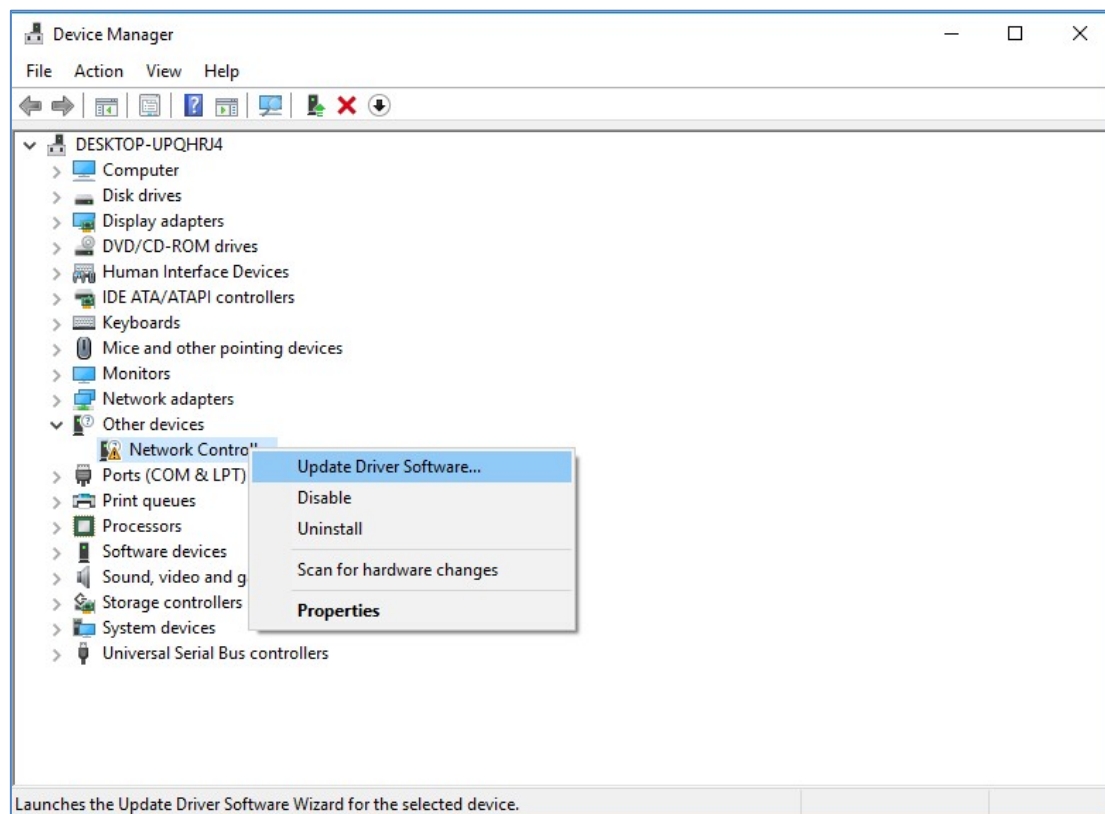
The **KP_CANFD** driver supports 32/64-bit Windows 7/8.1/10. It is recommended that new users install this driver, which can be found in the following location.

<https://www.icpdas.com/en/download/show.php?num=3200>

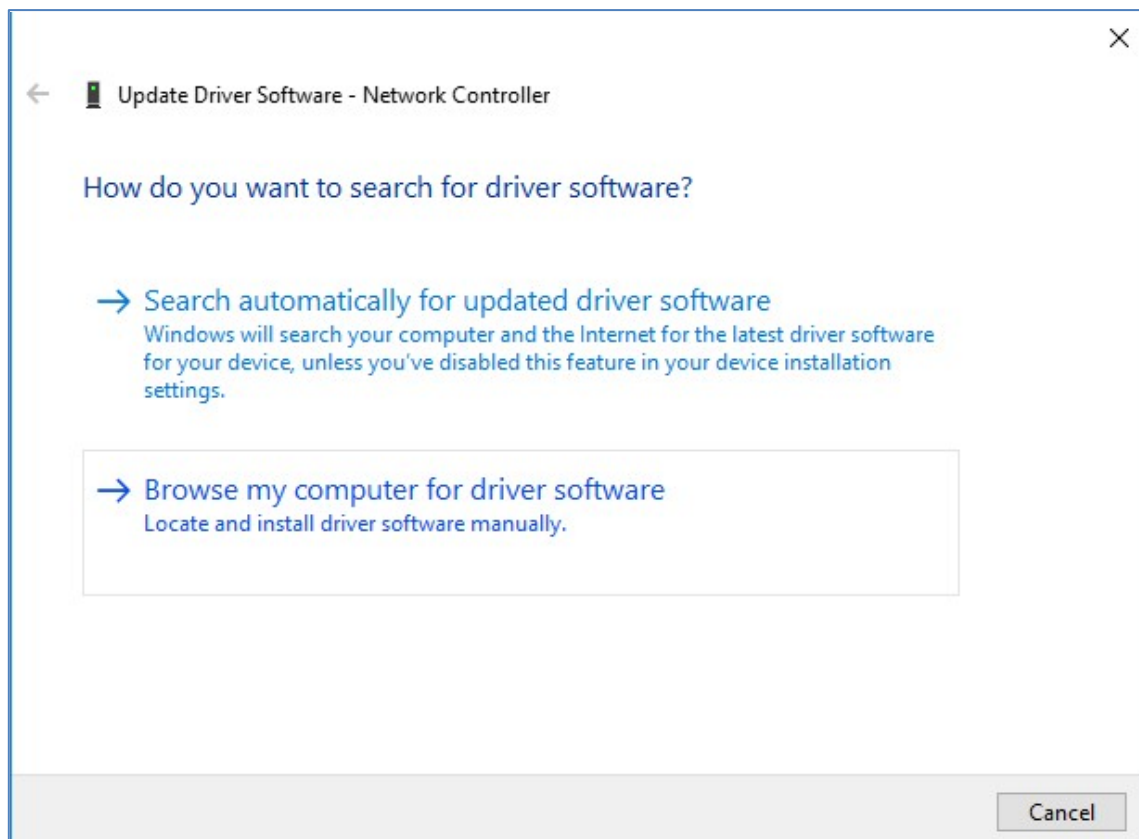
Step 2: Start to install Windows driver.

- (1). Right-click the **Start** button or press the **Windows Logo + X** key combination on the keyboard and, from the list, click to select **Device Manager**.

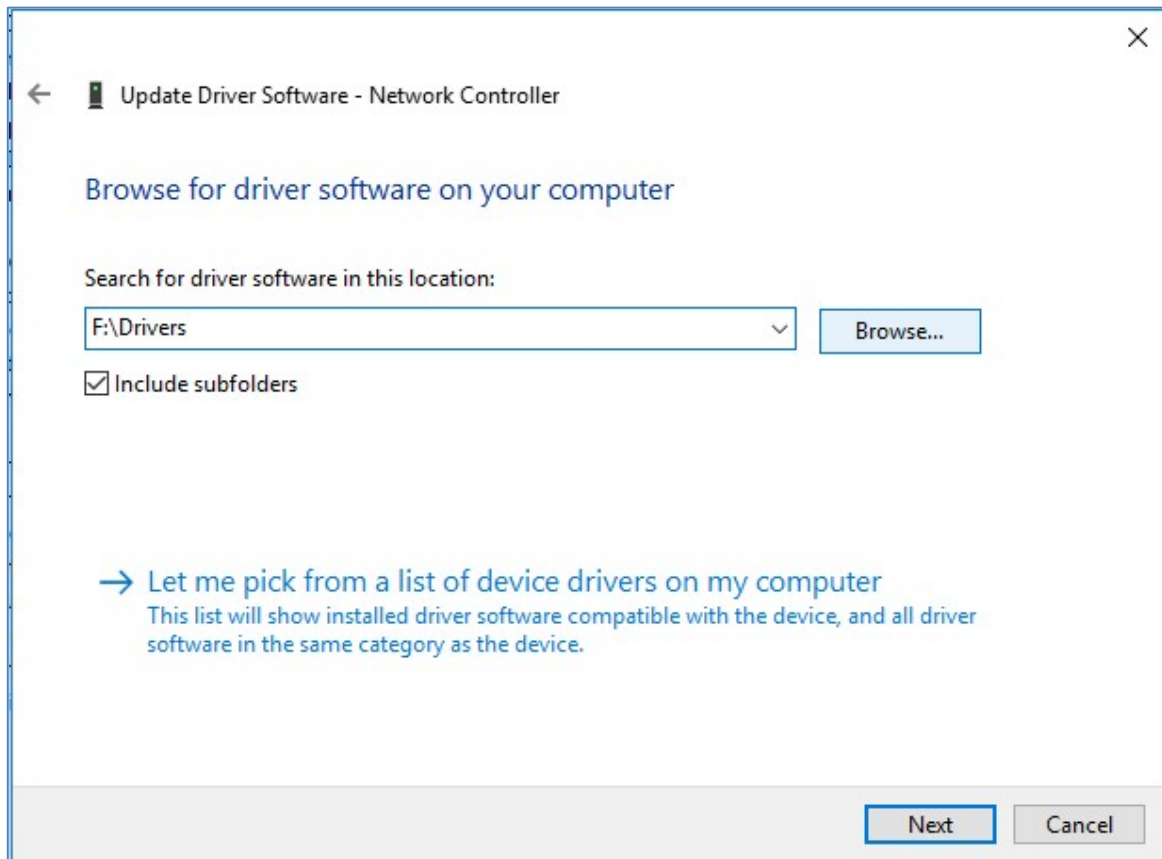
- (2). On the **Device Manager** screen, select the **Network Controller** device from **Other devices** item, then right-click the mouse button. Then select **Update Driver Software...** to continue.



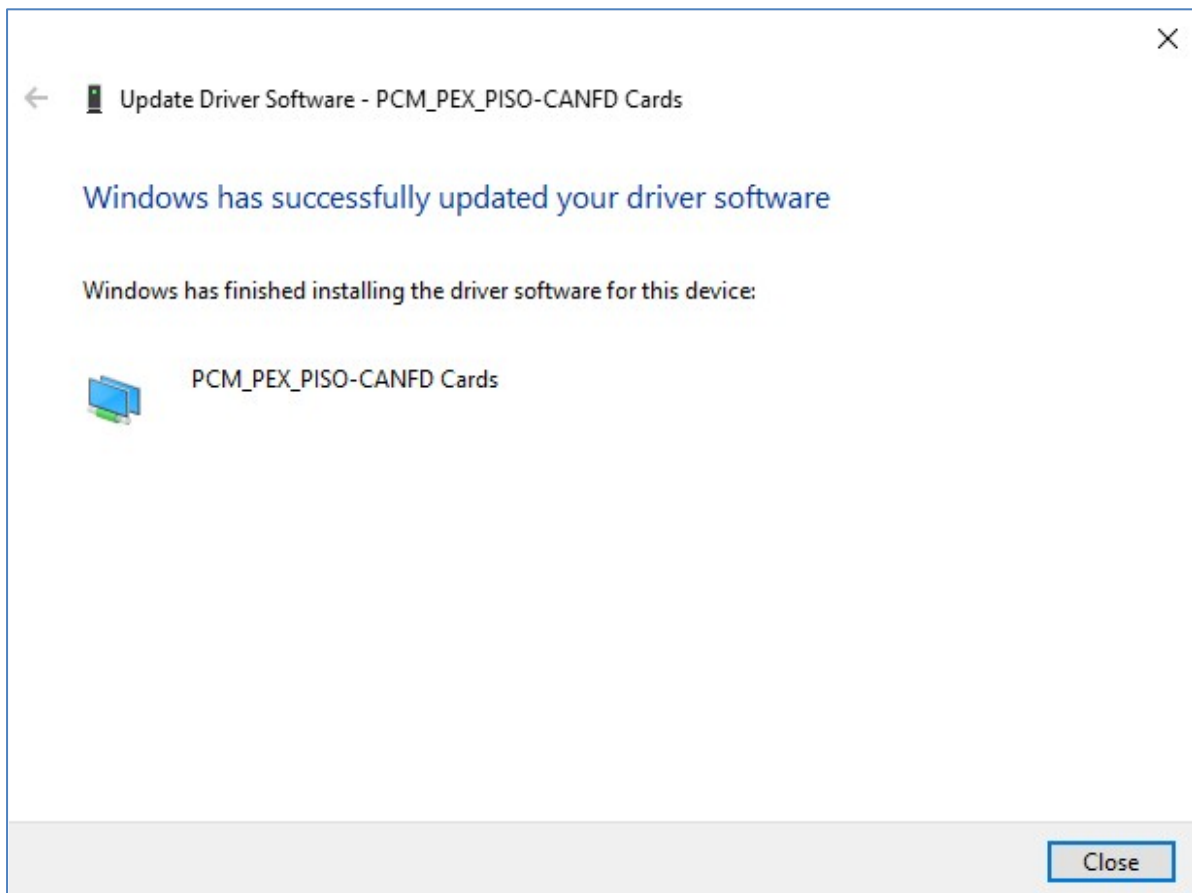
- (3). On the Update Driver Software – Network Controller screen, click the **Browse my computer for driver software** to continue.



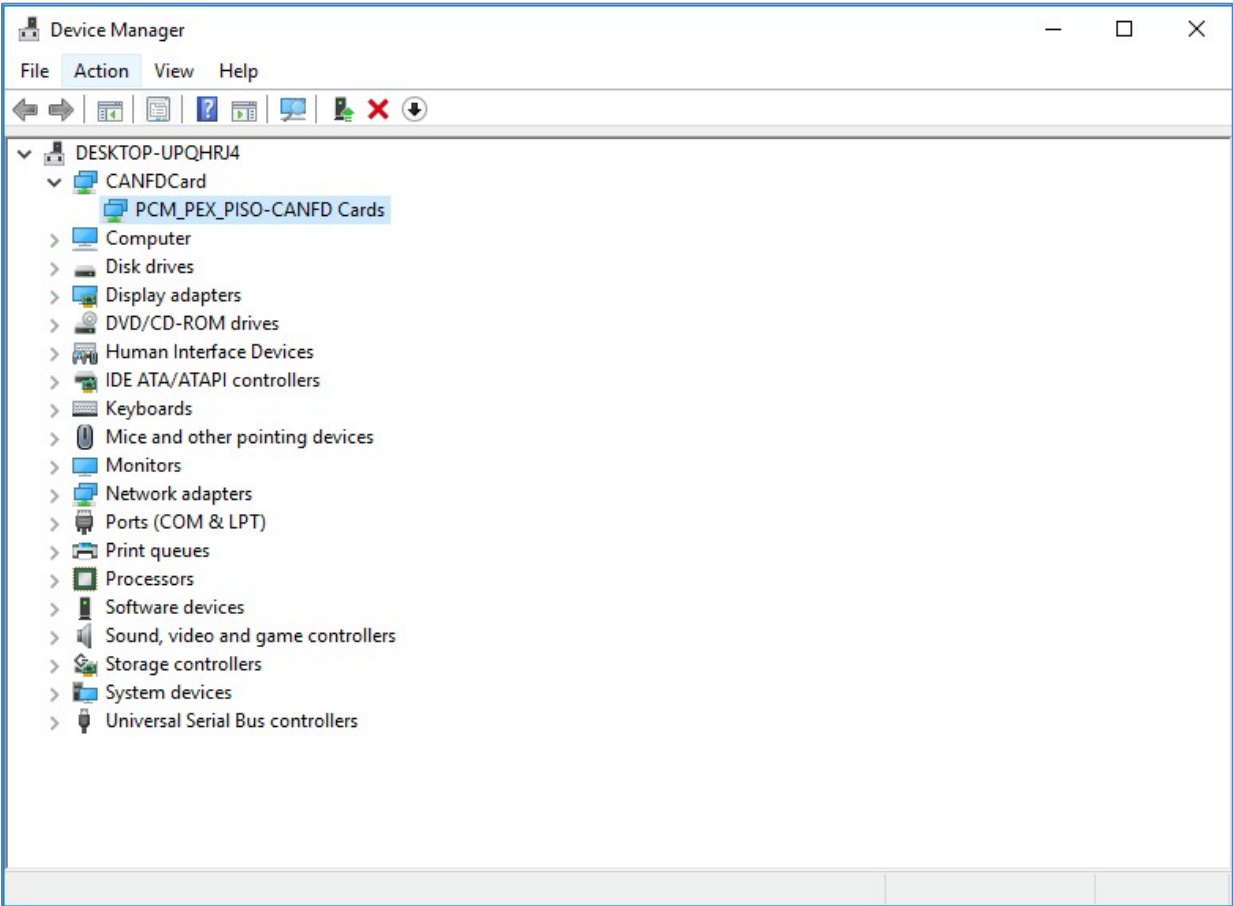
(4). Then Click the **Browser...** button to select the driver directory and click the **Next** button to start to install the driver.



(5). Once the installation has been completed, click the **Close** button to exit.

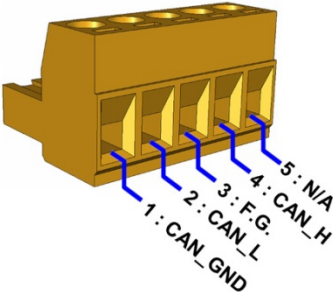


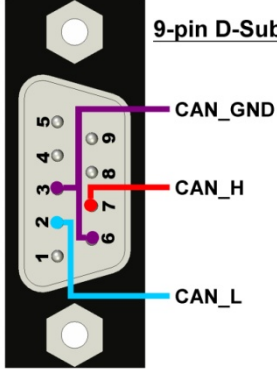
(6). After successfully to install the driver, you can see the **PCM_PEX_PISO-CANFD** Cards in **CANFDCard** item.



3

Pin Assignment

| Pin Assignments for the 5-pin screw terminal connector | | | | |
|--|---------|---|---|--|
| Pin No. | Name | Description |  | |
| 1 | CAN_GND | CAN_Gnd, signal line for the CAN port. | | |
| 2 | CAN_L | CAN_Low, signal line for the CAN port. | | |
| 3 | F.G. | Frame Ground. | | |
| 4 | CAN_H | CAN_High, signal line for the CAN port. | | |
| 5 | N/A | Not used | | |

| Pin Assignments for the 9-pin Male D-Sub connector | | |  <p>9-pin D-Sub male connector</p> <p>CAN_GND</p> <p>CAN_H</p> <p>CAN_L</p> |
|--|---------|---|---|
| Pin No. | Name | Description | |
| 1 | N/A | Not used | |
| 2 | CAN_L | CAN_Low, signal line for the CAN port. | |
| 3 | CAN_GND | CAN_Gnd, signal line for the CAN port. | |
| 4 | N/A | Not used | |
| 5 | N/A | Not used | |
| 6 | CAN_GND | CAN_Gnd, signal line for the CAN port. | |
| 7 | CAN_H | CAN_High, signal line for the CAN port. | |
| 8 | N/A | Not used | |
| 9 | N/A | Not used | |

4

Testing Board

PISO-CANFD Utility is provided by ICP DAS to transmit / receive CAN/CAN FD messages for CAN Bus communication testing easily and quickly.

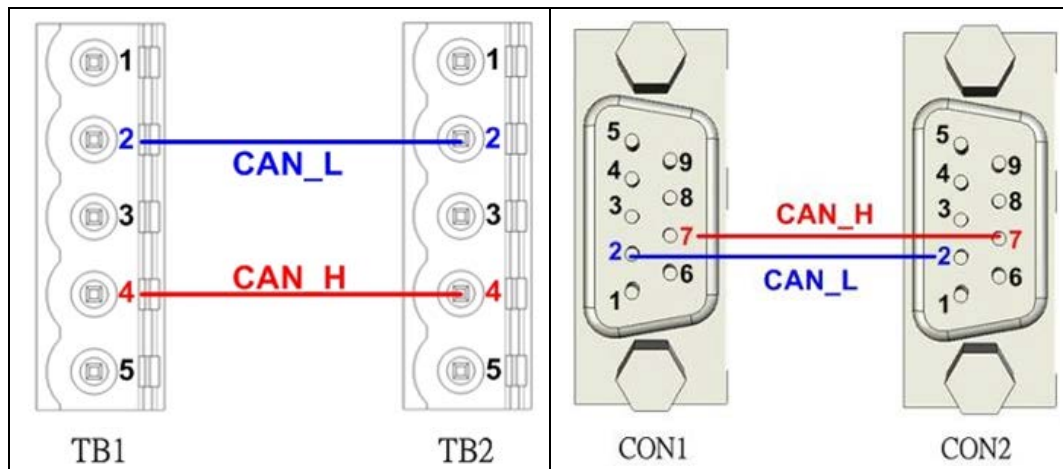
Step 1: Download the PISO-CANFD Utility

The software is located at:

<https://www.icpdas.com/en/download/show.php?num=3199>

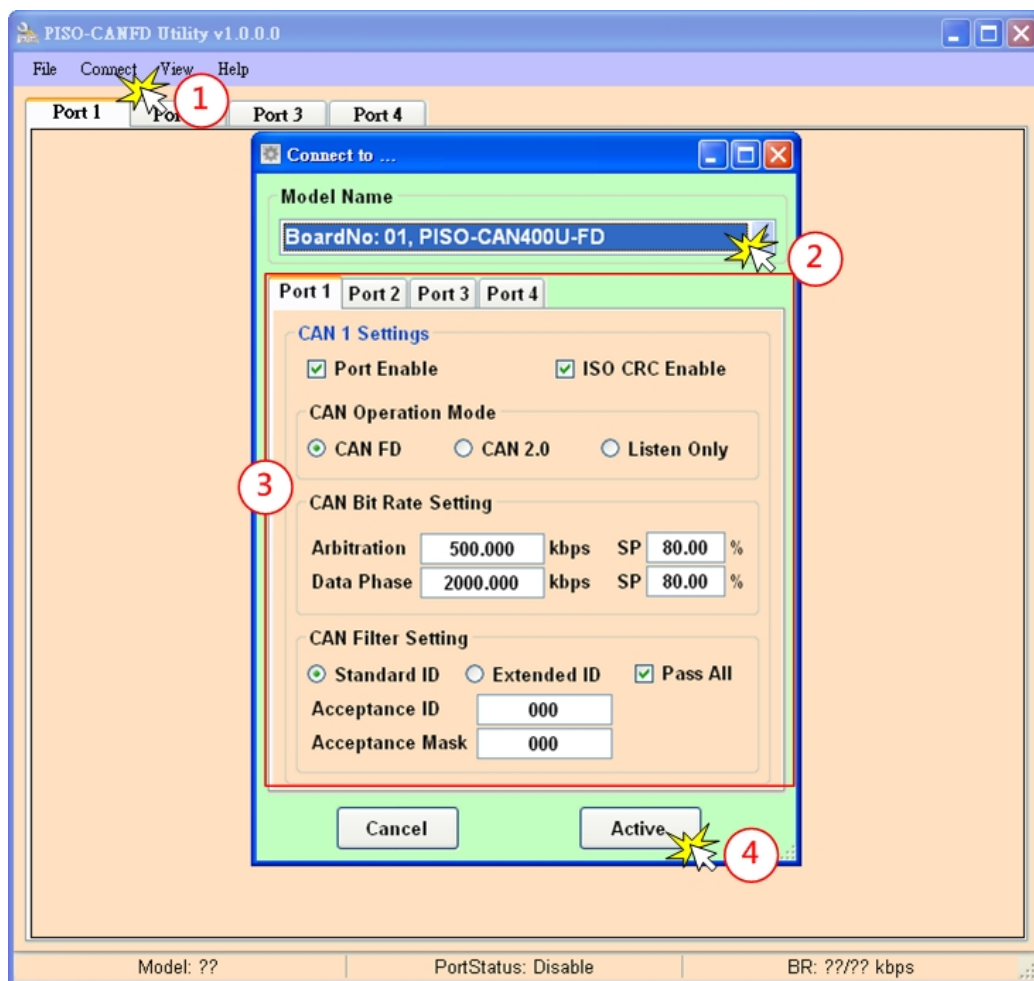
Step 2: Setting up the board

Connect the CAN_L and CAN_H pin on port1 and port2 of board.



Step 3: Active the board

Launch the PISO-CANFD Utility software.



- ## Step 4: Send, receive CAN/CAN FD messages

Send CAN/CAN FD messages and check received CAN/CAN FD messages.

