
Appendix B: Upgrade VP-25W7 / VP-23W7 's ISaGRAF Driver to Newer Version

Note:

If you have purchased VP-25W7 or VP-23W7, the ISaGRAF Driver is already installed with a license when shipping out. You don't need to install it. However if you want to upgrade to newer version, you may upgrade it by yourself.

The VP-25W7 and VP-23W7 's ISaGRAF driver can be obtained in the VP-25W7/23W7 CD-ROM: \napdos\isagraf\vp-25w7-23w7\driver\<version Number>\

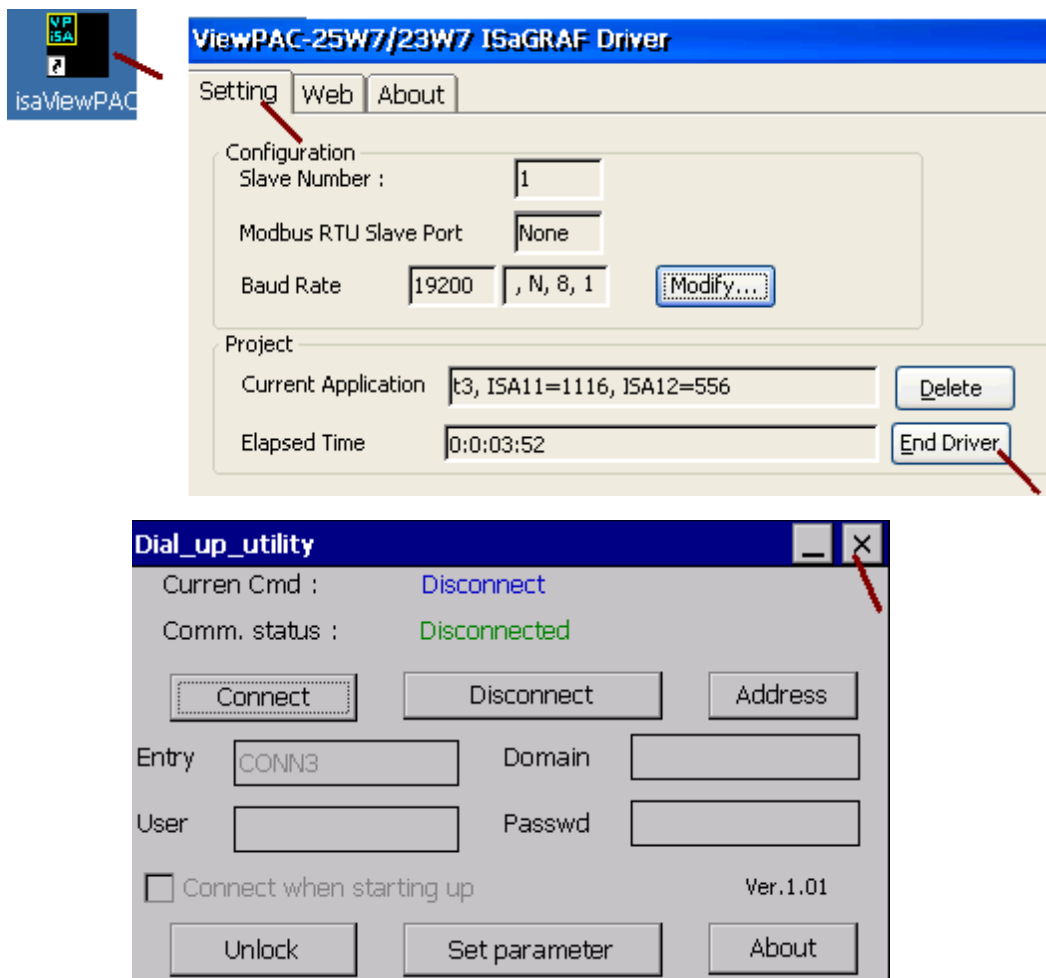
For example, version 1.30 is located at

\napdos\isagraf\vp-25w7-23w7\driver\1.30\

Or download it from <http://www.icpdas.com/products/PAC/i-8000/isagraf.htm> > Driver

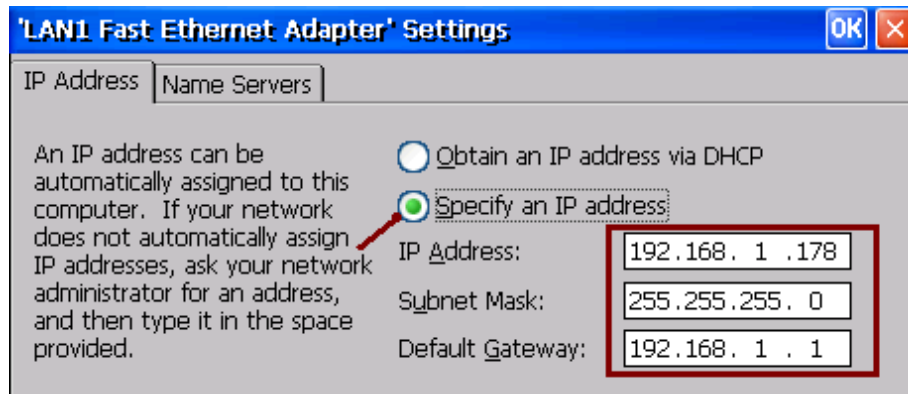
1. If your ViewPAC is VP-25W7 or VP-23W7, please stop "ViewPAC-25W7/23W7 ISaGRAF Driver" first (Click on "End Driver" to stop it.) . And if the "Dial_up_utility" is running, also close it.

However if it is VP-25W1/23W1 (ViewPAC without ISaGRAF license), please goto step 2.

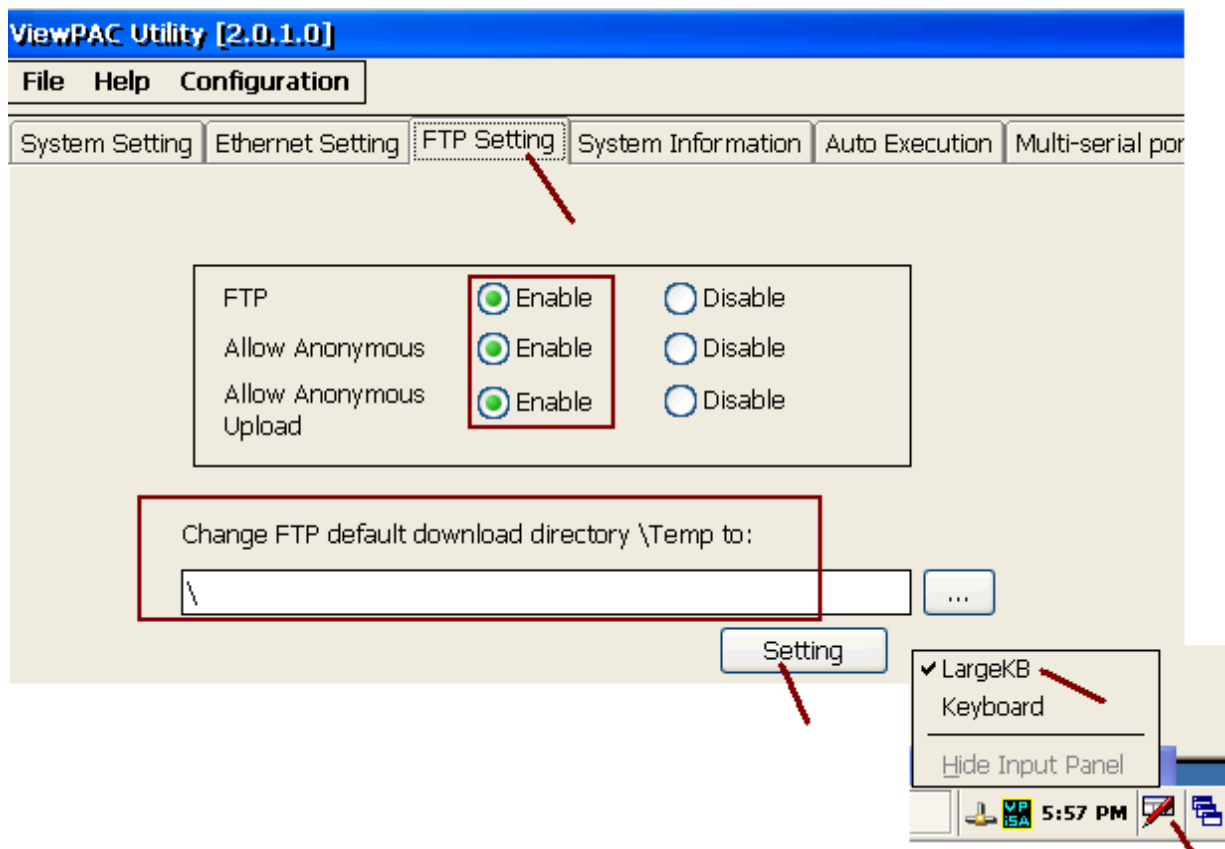


2. Set up ViewPAC 's IP, Mask, FTP directory & Auto-execute

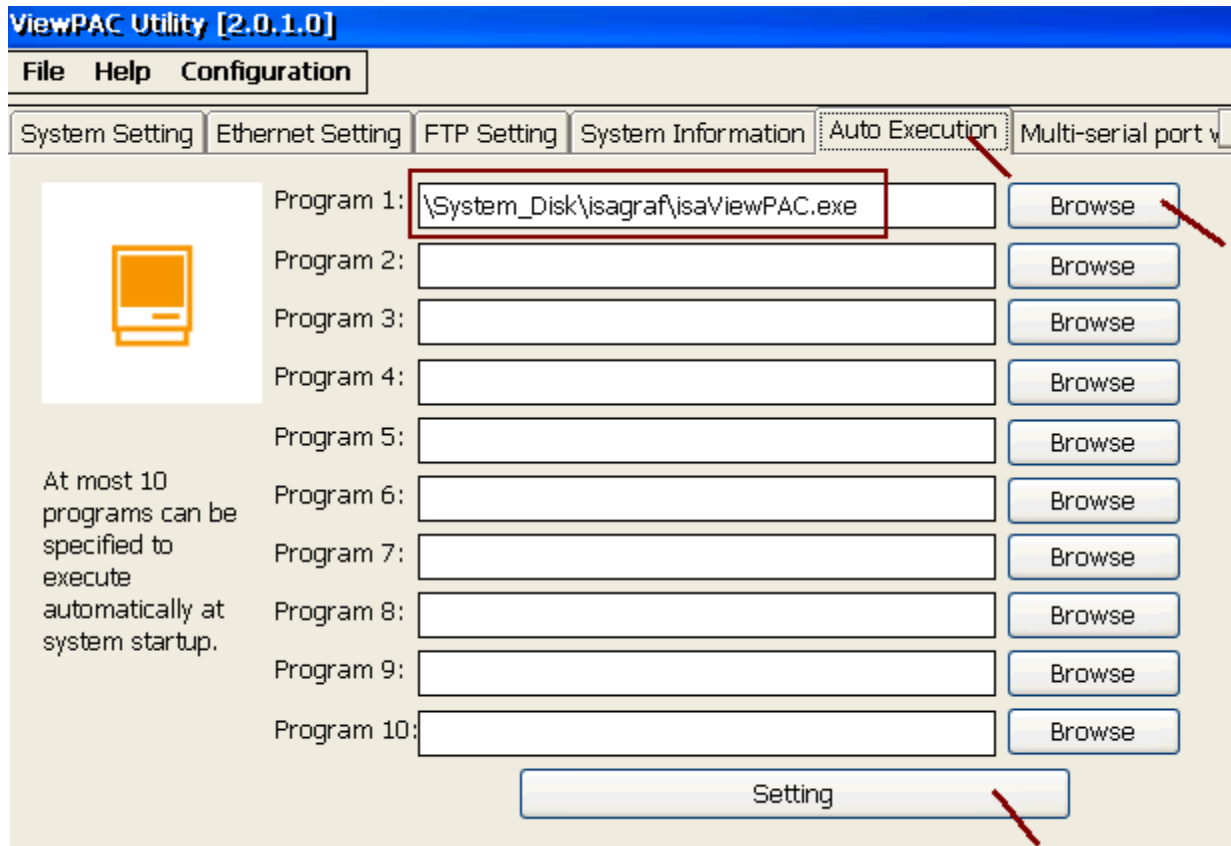
- A. Please create a folder "isagraf" inside "\System_Disk" folder in your ViewPAC controller. Then it will be \System_Disk\isagraf\
- B. Please run "Start" – "Setting" – "Control Panel" on the ViewPAC, then double click on "Network and Dial-up Connections". Then click on "LAN1". Set your ViewPAC 's IP address & its Subnet Mask. (Please always set as Fixed IP for ISaGRAF application, No DHCP)



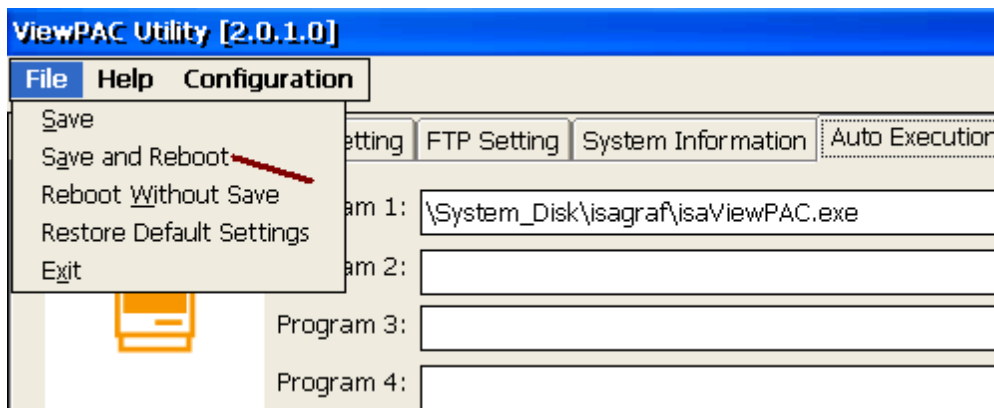
- C. Please run "Start" – "Programs" – "ViewPAC Utility". Set FTP directory to the root directory "\". Then check all three ftp options as "Enable". Remember to click on "Setting". Then click on "Auto Execution" to do the next step



D. Please click on “Browse” to select or type “\System_Disk\isagraf\isaViewPAC.exe” and click on “Setting”

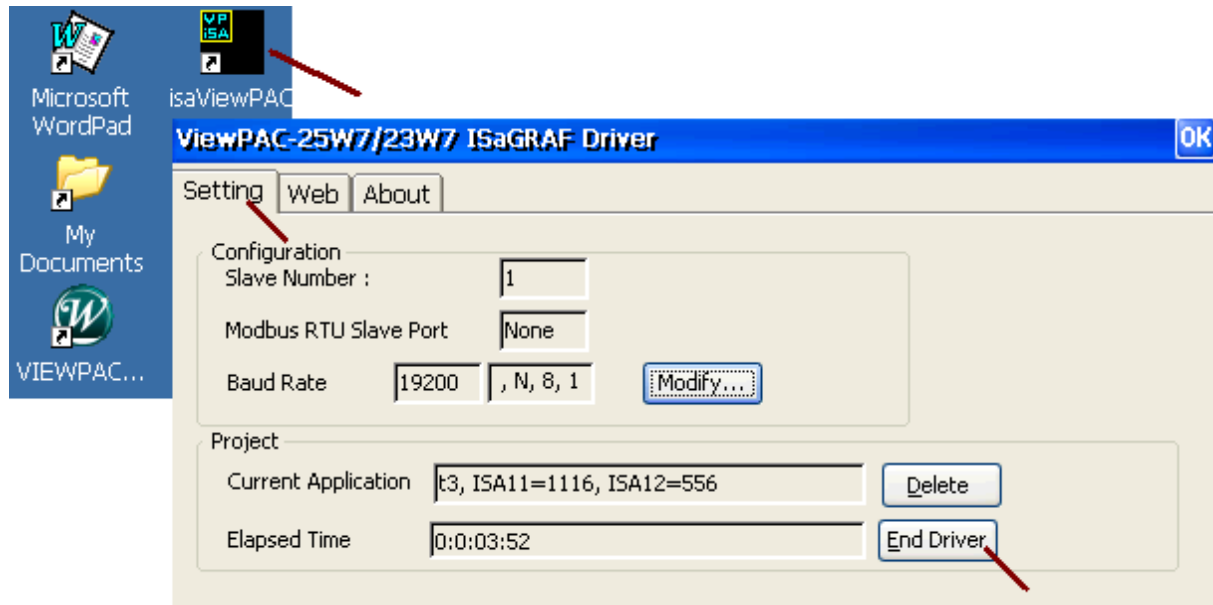


E. Run “Save and Reboot” to store the setting in step A thru. D and then it will auto-reboot the ViewPAC once.



3. After the ViewPAC reboot successfully, please stop the ISaGRAF driver . (The original VP-25W1 / 23W1 doesn't have the ISaGRAF driver, only the VP-25W7 / 23W7 have it)

Note: If the ISaGRAF driver is still running, the files copied are failed even your eye telling you it is successful. And If the “Dial_up_utility” is running, also close it first.



Then download the “isaViewPAC.exe”, “rs_wphmi.exe”, “isa_el.dll”, “sharedmemory.dll”, “mscorlib.dll”, “QuickerNet.dll”, “Quicker.dll”, “login.dll”, “main.dll”, “whmi_filter.dll”, “isaViewPAC.lnk”, “PLC_MODE_VP_2xW7.exe”, “SQL_Client_PAC.exe”, “dbnetlib.dll”, “System.Data.SqlClient.dll”, “System.Data.SqlServerCe.dll”, “Soft-GRAF.exe”, “dial_utility.exe”, “dial_up.dll”, “dial_up_net.dll”, “icpdas gtm-201-rs232_com3_viewpac_v1.00.cab”, “i8123w.dll”, “i8120.dll”, “icpdas_i-821xw_MSA1_v1.00.cab” and one “sofgrafy” sub-directory.

(and “license.bin” if your ViewPAC is VP-25W1 / 23W7) from the PC to the ViewPAC controller. Please copy them to the “\System_Disk\isagraf”. & then re-cycle your ViewPAC 's power. You may use PC 's ftp utility to download these files.

Please open Internet browser and then type in <ftp://<IP address>>, for ex. [Ftp://192.168.1.178](ftp://192.168.1.178) , browse it to the \System_Disk\isagraf .

Then copy all of them & past it.

Then remember to re-cycle your ViewPAC 's power again. After it re-boot again, it will have the new ISaGRAF driver running. You can check if the version is correct.

