

Packing List

In addition to this guide, the package includes the following items:



or



(P)ET-2242U / (P)ET-2242U-32 X 1

Quick Start x1

Resources

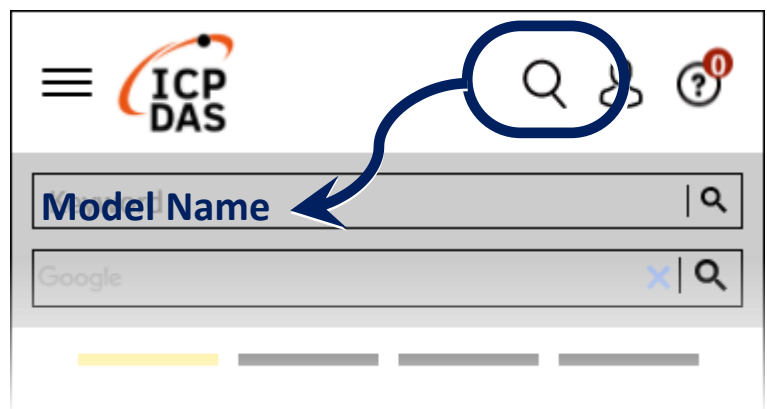
Technical Support

service@icpdas.com

www.icpdas.com

How to search for drivers, manuals and spec information on ICP DAS website.

- For Mobile Web



- For Desktop Web



1 Connecting the Power and Host PC

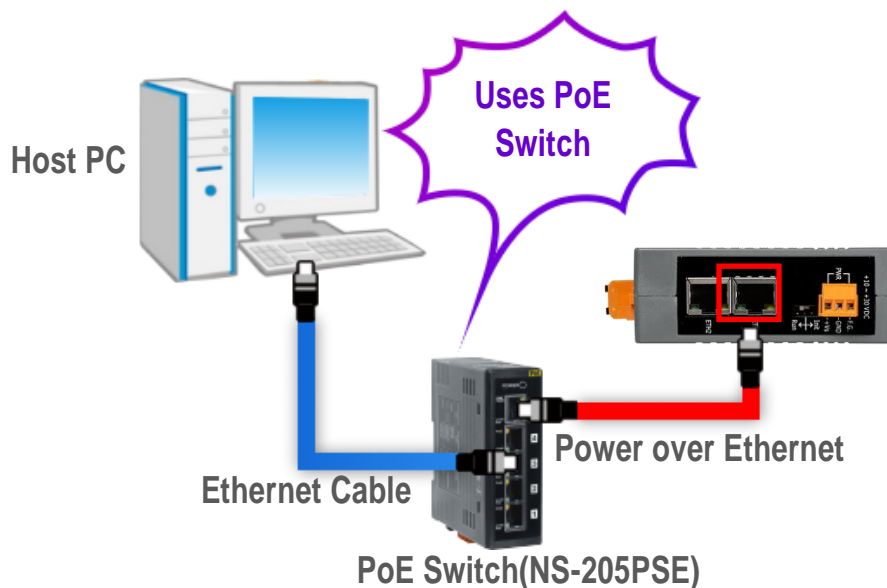
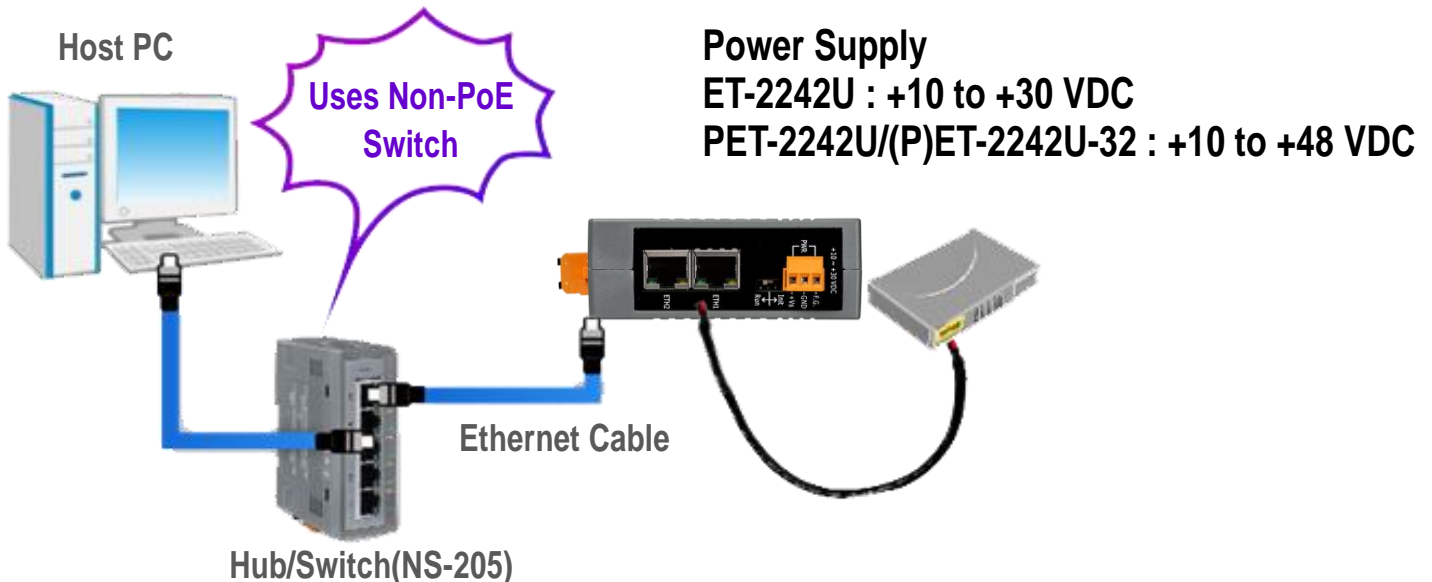
1) Make sure your PC has workable network settings.

Disable or well configure your Windows firewall and Anti-Virus firewall first, else the “**Search Servers**” on **Chapter 3** may not work. (Please contact with your system Administrator)

2) Connect both the (P)ET-2242U and your PC to the same sub network or the same Ethernet switch.

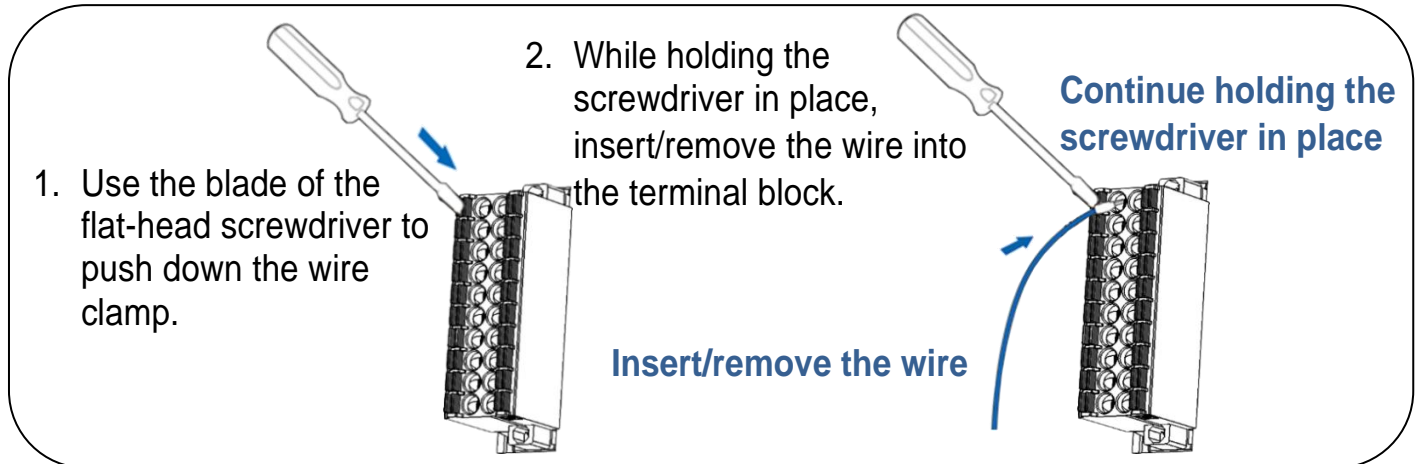
3) Supply power (PoE or +10 to +48 VDC) to the (P)ET-2242U. °

⚠ Note: Please use the first RJ-45 jack (ETH1) to connect the PoE Switch for powering through PoE. The second RJ-45 jack (ETH2) doesn't support the PoE function.



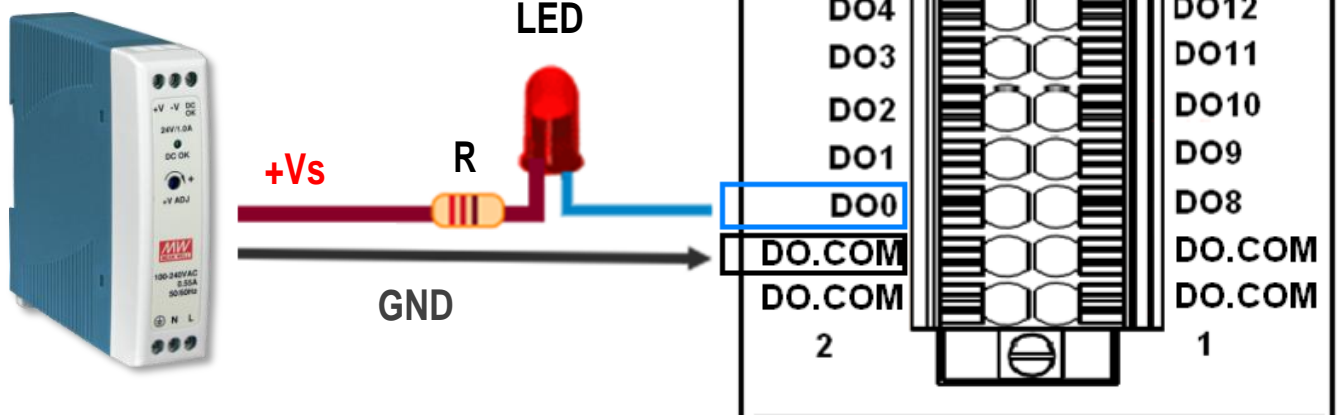
2 Wiring the DI and DO for Self-test

- A tip for insert/remove the wire to the connector.



- 1) Connect a LED to the DO0.
- 2) Connect the External Power +24V to the LED.
- 3) Connect the External Power GND to the DO.COM.

Power Supply
(e.g.: MDR-20-24)



3 Configuring Network Settings

1) Run the eSearch Utility.

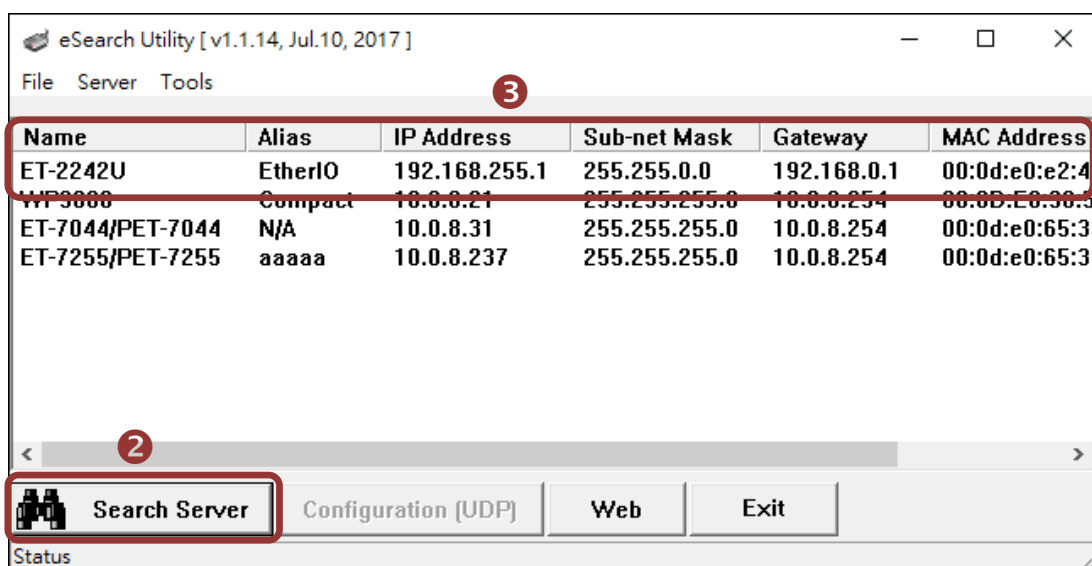
eSearch Utility download link:

<https://www.icpdas.com/en/download/index.php?nation=US&kind1=&model=&kw=eSearch>



2) Click the “**Search Servers**” to search your (P)ET-2242U.

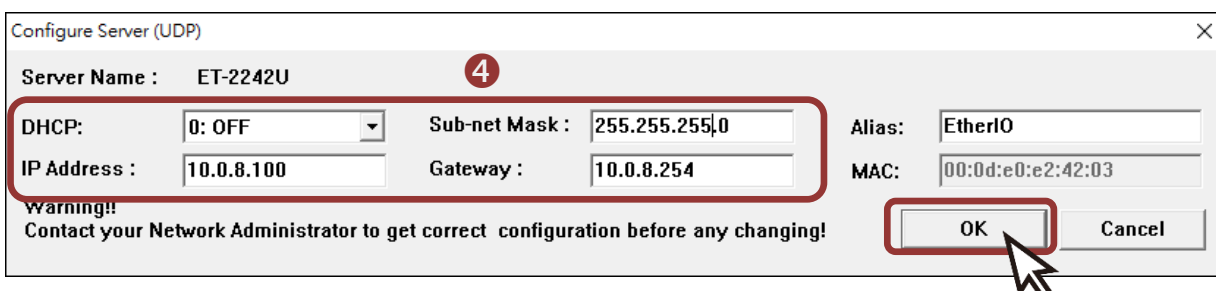
3) Double-click your (P)ET-2242U to configure the settings.



Factory Default Settings of (P)ET-2242U:

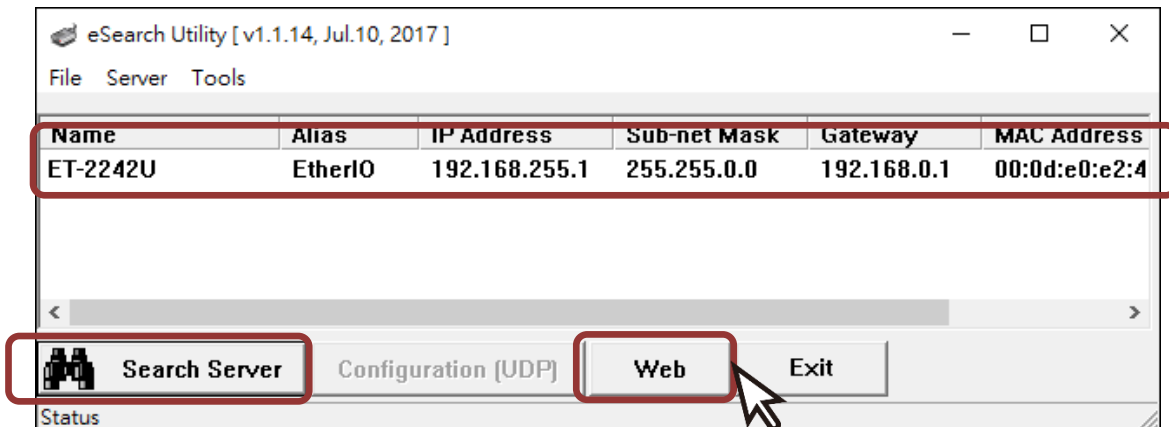
IP Address	192.168.255.1
Subnet Mask	255.255.0.0
Gateway	192.168.0.1

4) Contact your Network Administrator to obtain a correct network configuration (such as **IP/Mask/Gateway**). Enter the network settings and click “**OK**”. **⚠ Note: The (P)ET-2242U will use the new settings 2 seconds later.**



4 Testing your Ethernet I/O Module

- 1) Click “Search Servers” button again to ensure the (P)ET-2242U is working well with new configuration, than click the name of (P)ET-2242U to select it. °
- 2) Click the “Web” button to log in to the web configuration pages.(Or enter the URL address of the (P)ET-2242U in the address bar of the browser.)



- 3) For the first time using the module, you have to change the password and click the “Submit“ button.

ICP DAS Ethernet I/O Module

Home | Network | I/O Settings | Sync | PWM | Pair | Filter | Monitor | Password | Logout

MQTT (Topics: DO | DI)

Change Password
The length of the password is 12 characters maximum.

Current password:

New password:

Confirm new password:

Submit

- 4) Enter the new password in the “Login password” field and click the “Submit “button.

ICP DAS Ethernet I/O Module

Home | Network | I/O Settings | Sync | PWM | Pair | Filter | Monitor | Password | Logout

MQTT (Topics: DO | DI)

The system is logged out.
To enter the web configuration, please type password in the following field.

Login password:

Submit

- 5) The “Home” page allows for a simple test to verify the Digital Output functionality.
- 6) In the “Digital I/O” section, click the “DO0” button to turn it ON (Red).

ICP DAS **Ethernet I/O Module**
[Home](#) | [Network](#) | [I/O Settings](#) | [Sync](#) | [PWM](#) | [Pair](#) | [Filter](#) | [Monitor](#) | [Password](#) | [Logout](#)
 MQTT (Topics: [DO](#) | [DI](#)) | [SNMP](#)

Model Name	ET-2242U	Alias Name	EtherIO
Firmware Version	v2.4.2 [May.05 2023]	MAC Address	00-0d-e0-22-42-00
IP Address	10.1.0.70	Initial Switch	ON
TCP Timeout (Socket Watchdog, Seconds)	180	System Timeout (Network Watchdog, Seconds)	0

Digital I/O (Modbus Address: DO=00000 to 00015, DI=10000 to 10015.)

DO15	DO14	DO13	DO12	DO11	DO10	DO9	DO8
DO7	DO6	DO5	DO4	DO3	DO2	DO1	DO0

6

- 7) Verify that the output LED status is “ON”.

