

Supported Models

- PMD-2201
- PMD-2206
- PMD-4201
- PMD-4206

Technical Support

- **PMD User Manual and Firmware:**

- <http://pmms.icpdas.com/en/download.html>
- ftp://ftp.icpdas.com/pub/cd/pmd_cd/

- **PMD Official Website:**

- PMD-2201: http://pmms.icpdas.com/en/PMD_2201.html
- PMD-4201: http://pmms.icpdas.com/en/PMD_4201.html
- PMD-2206: http://pmms.icpdas.com/en/PMD_2206.html
- PMD-4206: http://pmms.icpdas.com/en/PMD_4206.html

What's in the box?

The package includes the following items:



Power Meter Concentrator
(PMD)



microSD card



Screw Driver (1C016)



Cable * 2
(CA-090910-A)



Panel Clip * 4



M4 x 30L Screw * 4

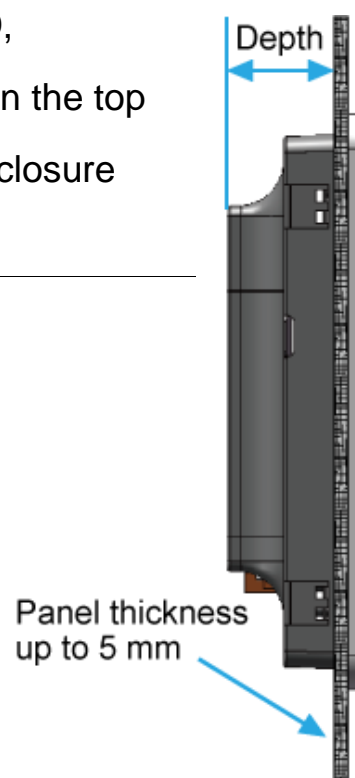
1 Mounting the Hardware

The PMD can be mounted on a panel of maximum thickness 5 mm. Adequate access space can be available at the rear of the instrument panel for wiring and servicing purposes.



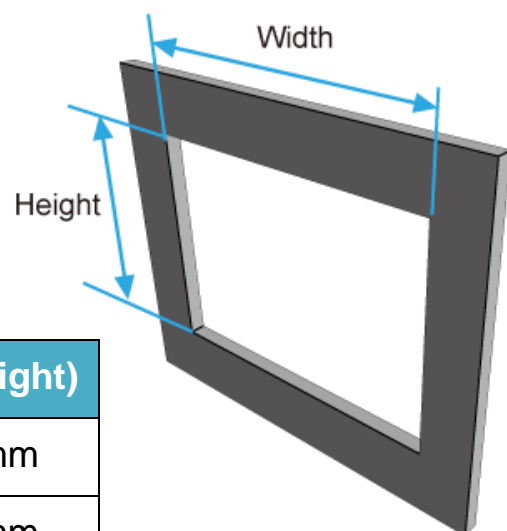
To ensure proper ventilation for your PMD, leave a minimum of 50 mm space between the top and bottom edges of the PMD and the enclosure panels.

| Models | Depth |
|----------|-------|
| PMD-220x | 44 mm |
| PMD-420x | 54 mm |



1) Prepare the panel and cut the hole to the specified size. The table below shows the dimension of the panel cut-out of PMD.

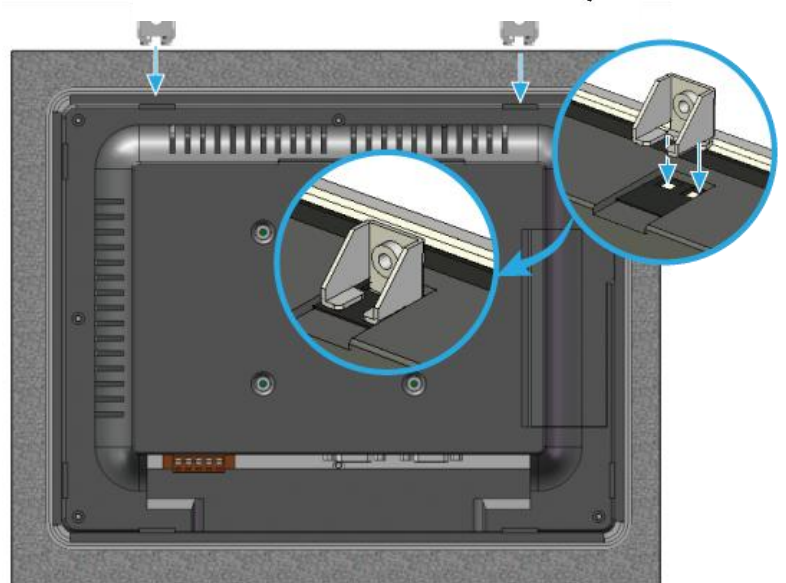
| Models | Panel Cut-Out (Width x Height) |
|----------|--------------------------------|
| PMD-220x | 197 mm x 133 mm, ± 1 mm |
| PMD-420x | 277 mm x 215 mm, ± 1 mm |



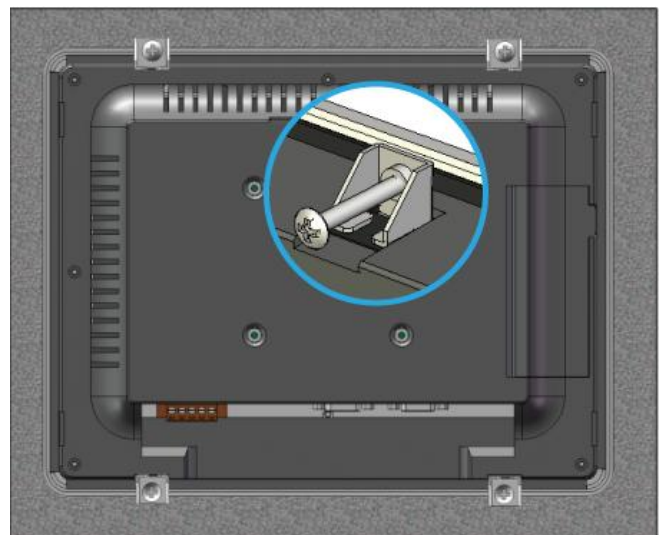
2) Attach the PMD to the cut-out hole.



3) Insert the panel mounting clips into the upper and lower ventilation holes.



4) Screw the panel mounting clips to the panel.



Recommended Screw Torque: 3.4 ~ 4.5 kgf-cm.

2 Configuring the boot mode

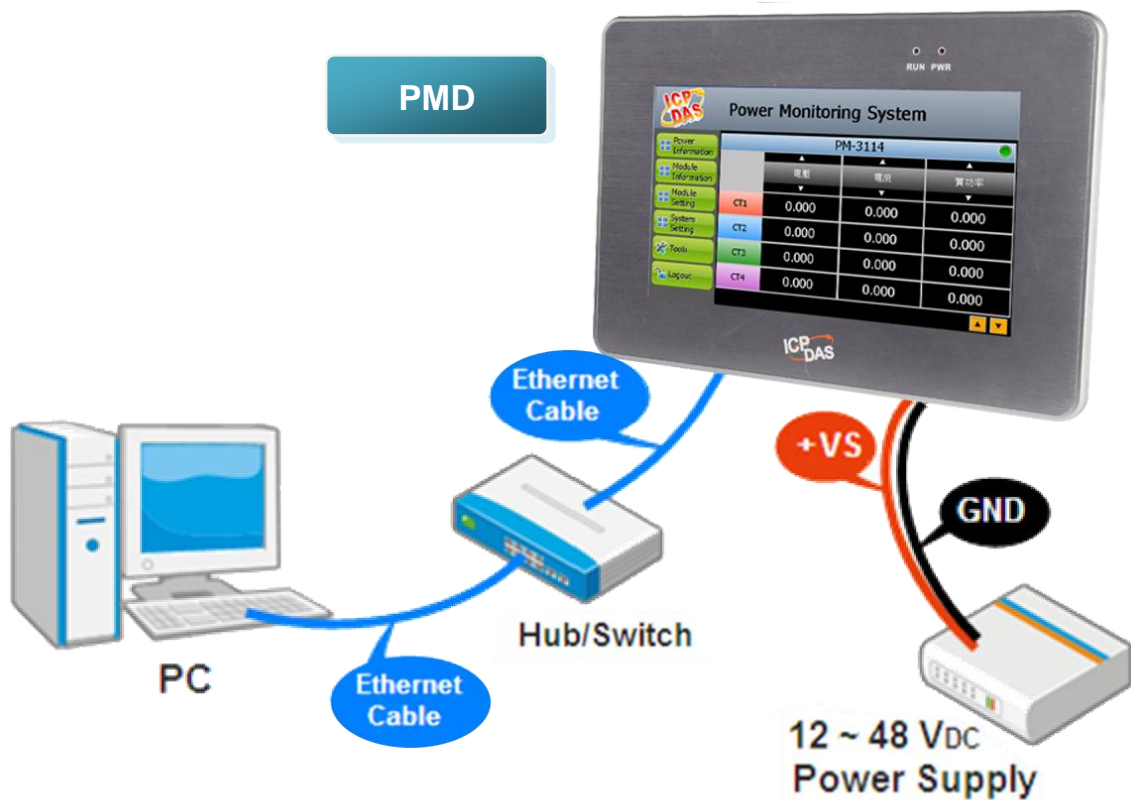
Before starting PMD at the first time, be sure that the rotary switch is placed in the "0" position.



The rotary switch must be placed in the "0" position

3 Connect to PC, Network and Power

The PMD is equipped with an RJ-45 Ethernet port for connection to an Ethernet hub/switch and PC. You can also link directly the PMD to PC with an Ethernet cable.



4 Assign a New IP to PMD

The PMD is an Ethernet controller, which comes with a default IP setting. The factory default IP settings of LAN1 are as follows:

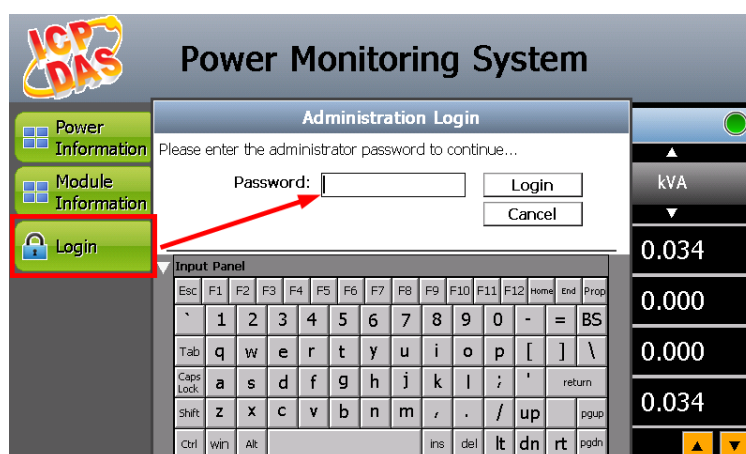
| Item | Default |
|-------------|--------------------------------------|
| IP Address | 192.168.255.1 |
| Subnet mask | 255.255.0.0 |
| Gateway | 192.168.0.1 |
| DNS Server | 8.8.8.8 (Default: Google DNS Server) |

The user can modify the Network setting of PMD by two interfaces (**local side display interface and remote side Web page interface**).

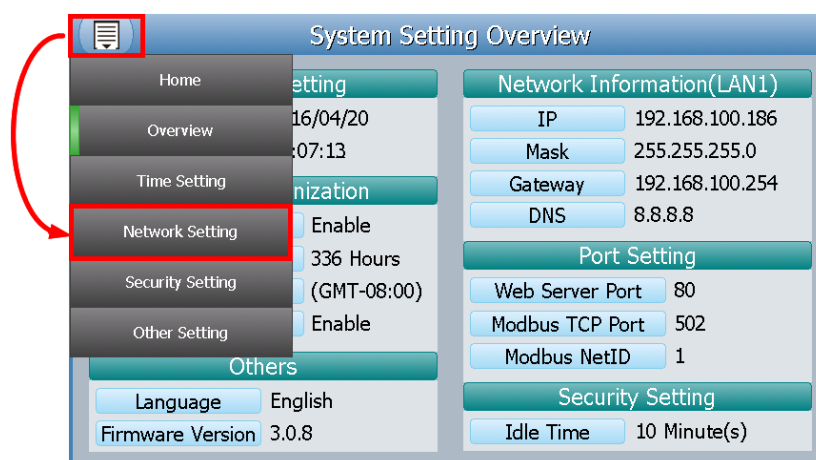
The Network setting steps of PMD are as below:

1. Network setting by Local Side Display Interface

Step1: Login PMD as the Administrator. Click the “System Setting” button.



Step2: Click the “Network Setting” on the “System Setting” menu.



Step3: Modify the PMD network setting to fit current network environment.

| Network Setting(LAN1) | |
|-----------------------|-----------------|
| IP | 192.168.100.186 |
| Mask | 255.255.255.0 |
| Gateway | 192.168.100.254 |
| DNS | 8.8.8.8 |

| Port Setting | |
|-----------------|-----|
| Web Server Port | 80 |
| Modbus TCP Port | 502 |
| Modbus NetID | 1 |

Save

Step4: Clicking on the “Save” button to save the setting.

Now you can use the Browser to connect to the PMD’s IP address to open the Web page of PMD.

2. Network setting by Remote Side Web Page Interface

Step1: Change the PC’s IP setting as following.

- IP: 192.168.255.10
- Subnet mask: 255.255.0.0
- Gateway address: 192.168.0.1

Step2: Make sure the PC and PMD(**LAN1**) is connecting through Ethernet.

Step3: Open a PC side browser, and type in the URL address (<http://192.168.255.1>) of the PMD to connect the Web Server in PMD.

Step4: Use default Administrator password “**Admin**” to login the system.

Power Monitor & Management System
ICP DAS Co., Ltd.

Password:

Language: English

☐ Remember me

Login

Step5: Please follow the sequence **【System Setting】** → **【Network Setting】** → **【Network Setting(LAN1)】** to change the IP setting of PMD.

Power Monitor & Management System
ICP DAS Co., Ltd.

PMU-5161

Main Page **System Setting** Meter / Module Setting Logger Setting Advanced Setting Rules Setting

System Setting **Network Setting**

Time Setting

Network Setting

Security Setting

I/O Interface Setting

Other Setting

Network Setting(LAN1)

IP: 192 168 100 31

*Mask: 255 255 255 0

*Gateway: 192 168 100 254

*DNS: 168 95 1 1

Save

Step6: After complete the IP setting, please save it, and then the new IP setting will take effect.

5 Go to PMD Web Site for Power Management

Please follow the steps below to build a power monitoring and management applications with ICP DAS PMD & Power Meter.

Step 1: Open a browser, and type in the URL address of the PMD

Open a browser and type in the URL address(The new IP setting) of the PMD in the address bar. Make sure the IP address is accurate.

Step 2: Get on the PMD web site

Get on the PMD web site. Complete the PMD setting in the order:
【Login】→【System Setting】→【Meter / Module Setting】→【Rule Setting】→【Save】 for a power monitoring and management application.

Power Monitor & Management System
ICP DAS Co., Ltd.

PMC-5151
3732.4 MB
Instant Message

Main Page System Setting Meter / Module Setting Logger Setting Advanced Setting Rules Setting

Main Page

Power Meter Information
Power Data Information
Realtime Chart
Historical Chart
Historical Data Report
I/O Information
Event Log

Power Data Overview

Power Data Classification

| Data Classification1 | Data Classification2 | Data Classification3 |
|----------------------|----------------------|----------------------|
| V | I | kW |

Power Meters

| PM-3112 | Connection status |
|----------------------|----------------------|
| Loop | V I kW |
| Loop 1 | 105.411 0.000 0.000 |
| Loop 2 | 105.399 13.835 0.960 |
| Detailed information | |

| PM-3114 | Connection status |
|----------------------|----------------------|
| Loop | V I kW |
| Loop 1 | 105.412 20.895 1.459 |
| Loop 2 | 105.412 13.892 0.975 |
| Loop 3 | 105.416 20.612 1.444 |
| Loop 4 | 105.416 13.793 0.967 |
| Detailed information | |

Refresh

© ICP DAS Co., Ltd. All Rights Reserved

Step 3: For more detail information, please refer to PMD User Manual