

Packing List

Apart from this guide, this package includes following items:



VP-6238-CE7



I/O slot lid * 3



Panel clip * 4



Stylus Pen



Screwdriver



M4 x 30L Screw * 4



microSD card and
SD/microSD adapter

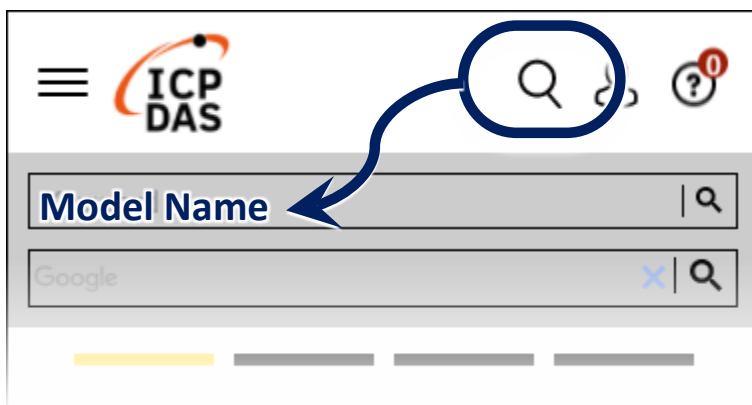
Resources

How to search for drivers, manuals and spec information from ICP DAS website.

• For Desktop Browser



• For Mobile Web



Technical Support

service@icpdas.com
www.icpdas.com

1 Set up ViewPAC

- 1) Ensure that the rotary switch is set to the “0” position.
- 2) Connect the positive terminal (+) of the power supply to the terminal PWR and the negative terminal (-) of the power supply to the P.GND.

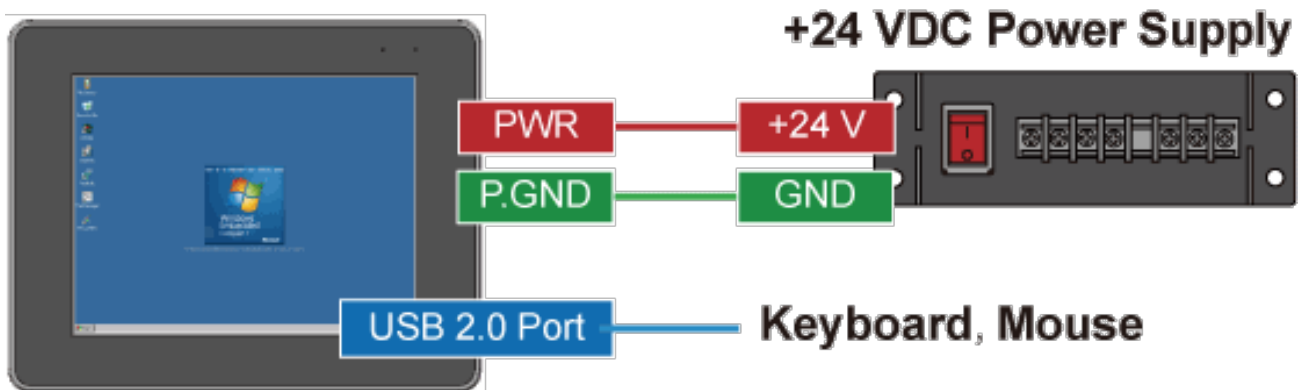


The input range of power supply is +12 to +48 V_{DC}.

- 3) Connect the USB mouse or USB keyboard to the USB port.



The rotary switch must be placed in the “0” position



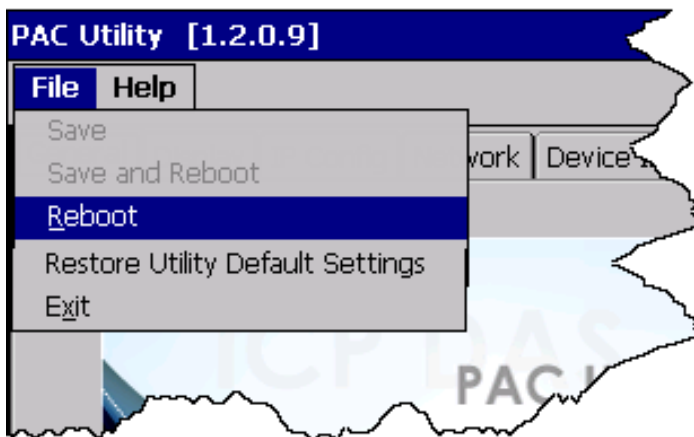
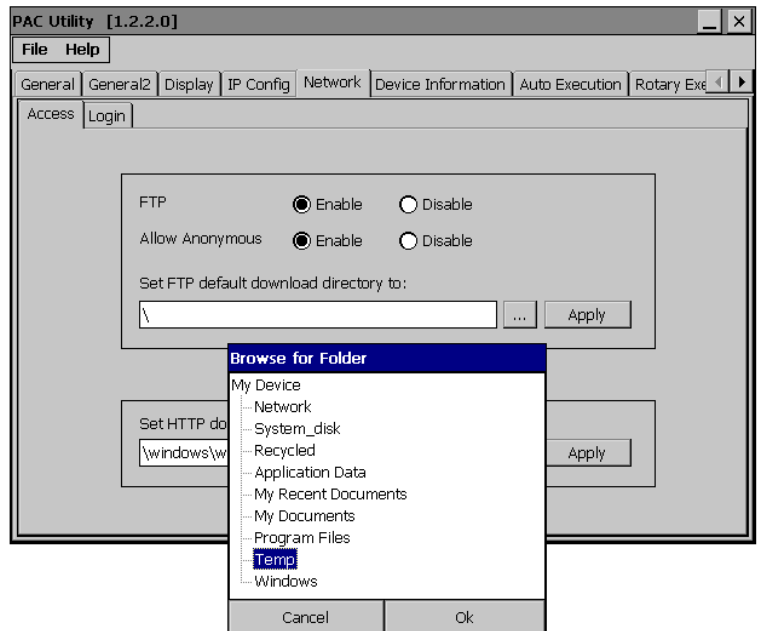
- 4) Turn on the ViewPAC.

2 Use PAC Utility to Manage the ViewPAC

1) Double-click the shortcut of “PAC Utility” on the desktop.



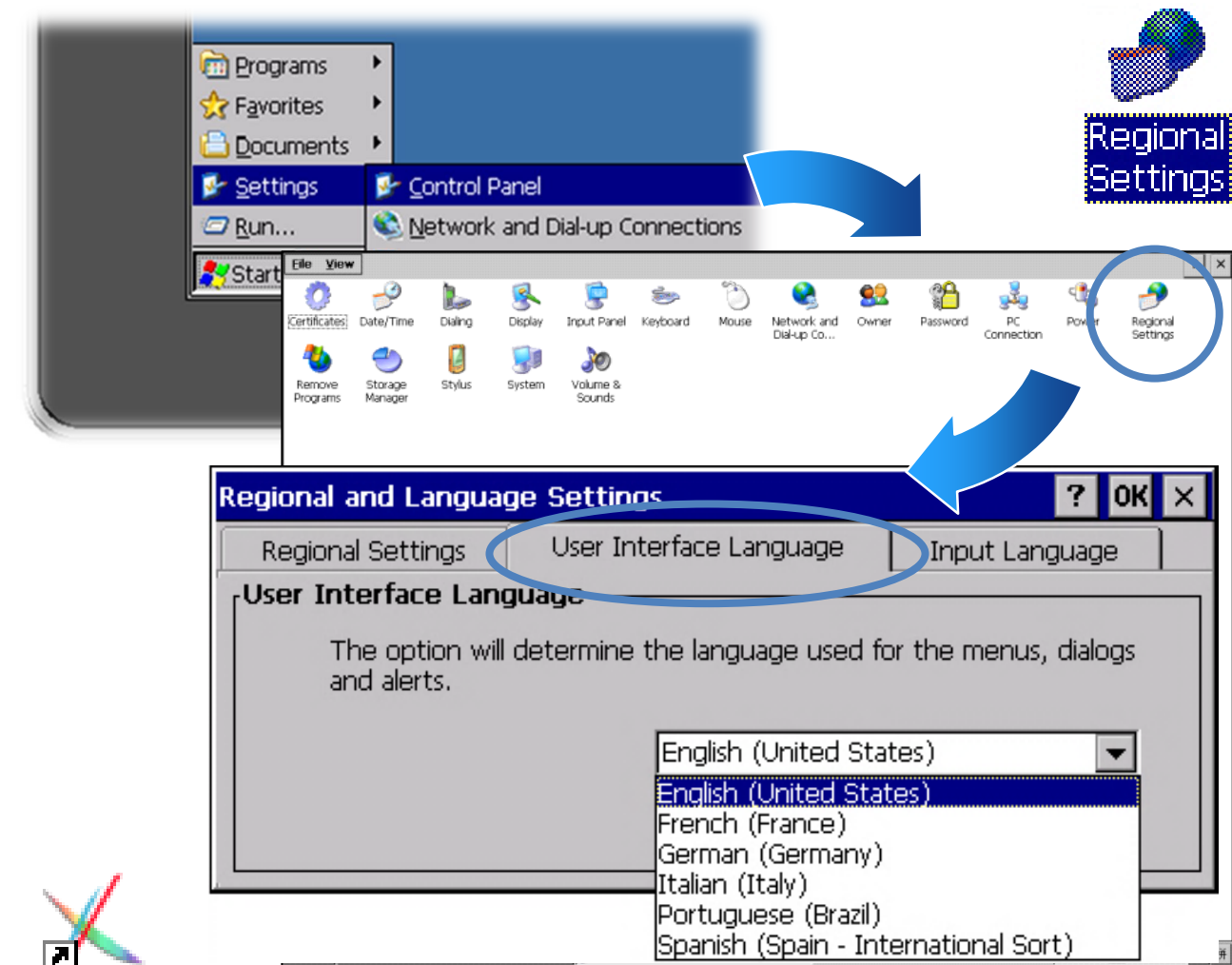
2) Configure IP address (DHCP),
FTP Server, auto execution
files..., etc.



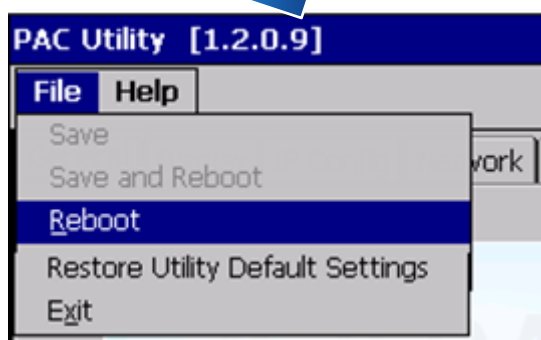
3) Reboot the ViewPAC to save all
changes.

3 Change the Language

- 1) Select "Start", choose "Settings", click "Control Panel", and then click Regional Settings.
- 2) Click "User Interface Language" tab, drop down to select the language, and then click OK.



PAC_Utility..



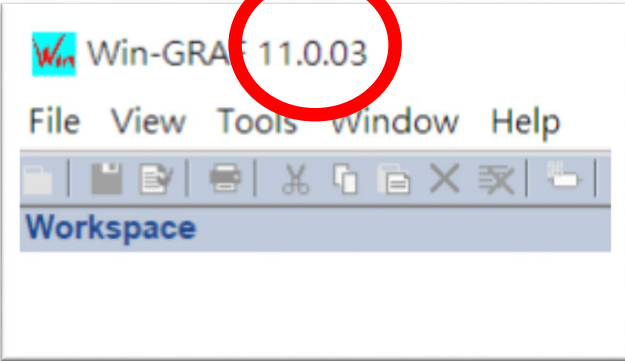
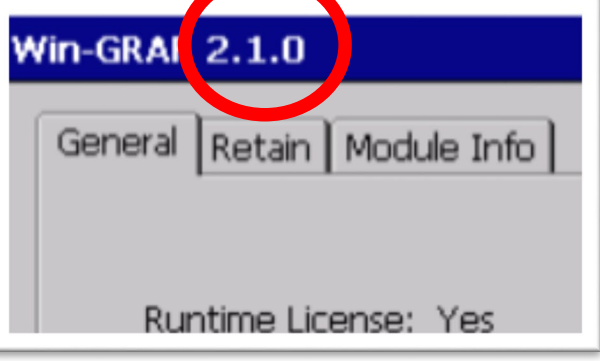
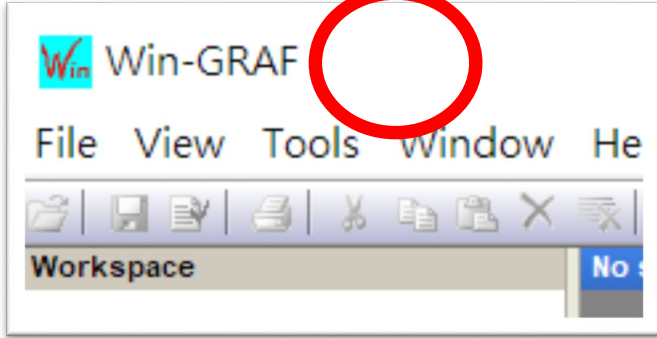
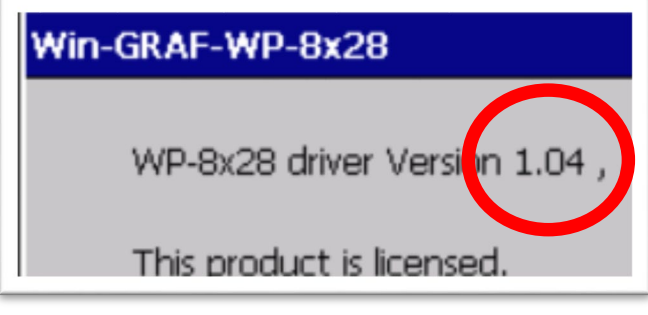
- 3) Run the PAC Utility, and then reboot the PAC to save all changes.

4 Version Identification

The match version rules for Workbench and Runtime:

- **Workbench 11.0** with **Runtime Ver. 2.xx (factory default)**
- Workbench **1.08** with Runtime Ver. **1.xx**

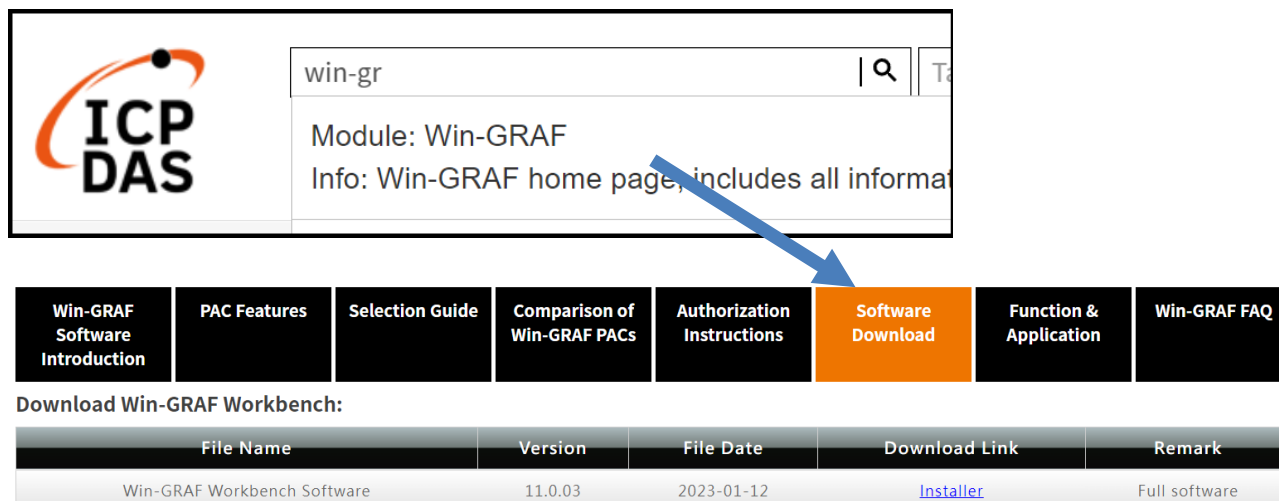
Figure for Version confirmation

Workbench 11.0	Runtime Ver. 2.xx
 A screenshot of the Win-GRAF 11.0.03 Workbench interface. The title bar shows 'Win-GRAF 11.0.03' with a red circle around the version number. The menu bar includes 'File', 'View', 'Tools', 'Window', and 'Help'. The toolbar contains various icons for file operations. The 'Workspace' area is visible at the bottom.	 A screenshot of the Win-GRAF 2.1.0 Runtime interface. The title bar shows 'Win-GRAF 2.1.0' with a red circle around the version number. The 'General' tab is selected, showing 'Runtime License: Yes'.
Workbench 1.08	Runtime Ver. 1.xx
<p>※There's no version number on the top-left window.</p>  A screenshot of the Win-GRAF 1.08 Workbench interface. The title bar shows 'Win-GRAF' with a red circle around the text. The menu bar includes 'File', 'View', 'Tools', 'Window', and 'Help'. The toolbar contains various icons for file operations. The 'Workspace' area is visible at the bottom.	 A screenshot of the Win-GRAF-WP-8x28 Runtime interface. The title bar shows 'Win-GRAF-WP-8x28'. The main text displays 'WP-8x28 driver Version 1.04 ,' with a red circle around the version number. Below it, it says 'This product is licensed.'

Note: Win-GRAF runtime must be matched with Win-GRAF Workbench V11 (or later)

5 Download the Latest Win-GRAF Workbench V11 Along with the Runtime

Key in “**win-graf**” into Search Box at ICP DAS home page. Find and download Win-GRAF Workbench V11 from the “Software download” Tab.



ICP DAS

win-gr

Module: Win-GRAF
Info: Win-GRAF home page, includes all informa

Win-GRAF Software Introduction | PAC Features | Selection Guide | Comparison of Win-GRAF PACs | Authorization Instructions | **Software Download** | Function & Application | Win-GRAF FAQ

Download Win-GRAF Workbench:

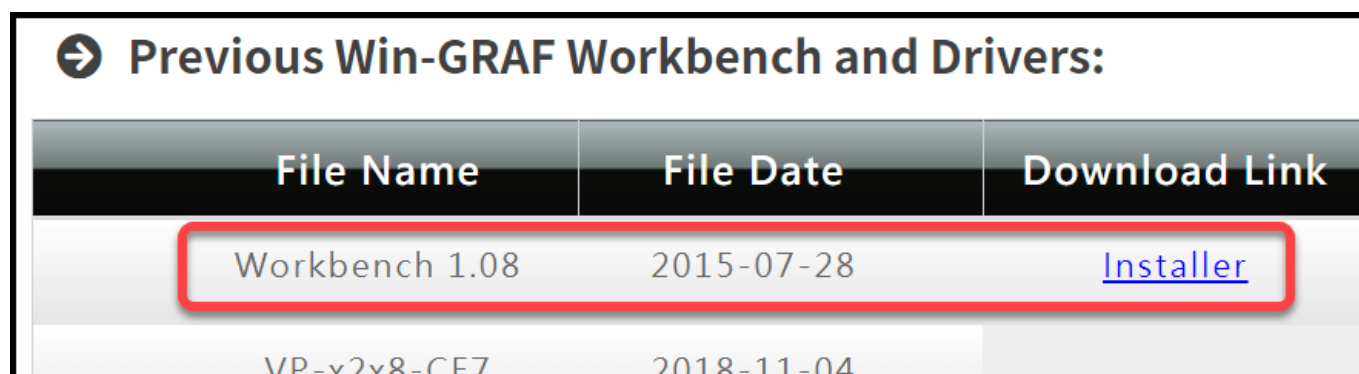
File Name	Version	File Date	Download Link	Remark
Win-GRAF Workbench Software	11.0.03	2023-01-12	Installer	Full software

6 Restore Old Version Win-GRAF Runtime (1.xx)

Win-GRAF runtime (2.xx) does not fully support files compiled by Win-GRAF Workbench version 1.08. If you'd like to restore the old version runtime, please download and restore the runtime of PAC by yourself to **restore it back to the 1.xx version** of Win-GRAF runtime.

The method to restore is as follows:

- 1) Drop down to the end of this Tab and download old version runtime.



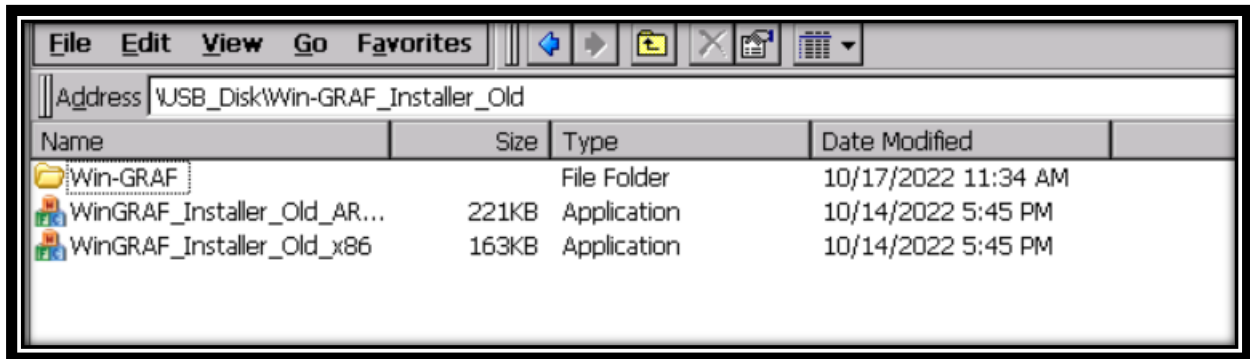
Previous Win-GRAF Workbench and Drivers:

File Name	File Date	Download Link
Workbench 1.08	2015-07-28	Installer
VP-v2x8-CE7	2018-11-04	

2) Copy “**Win-GRAF_Installer_Old.Zip**” file into pen drive or micro SD card, and unzip it.

3) Install the runtime

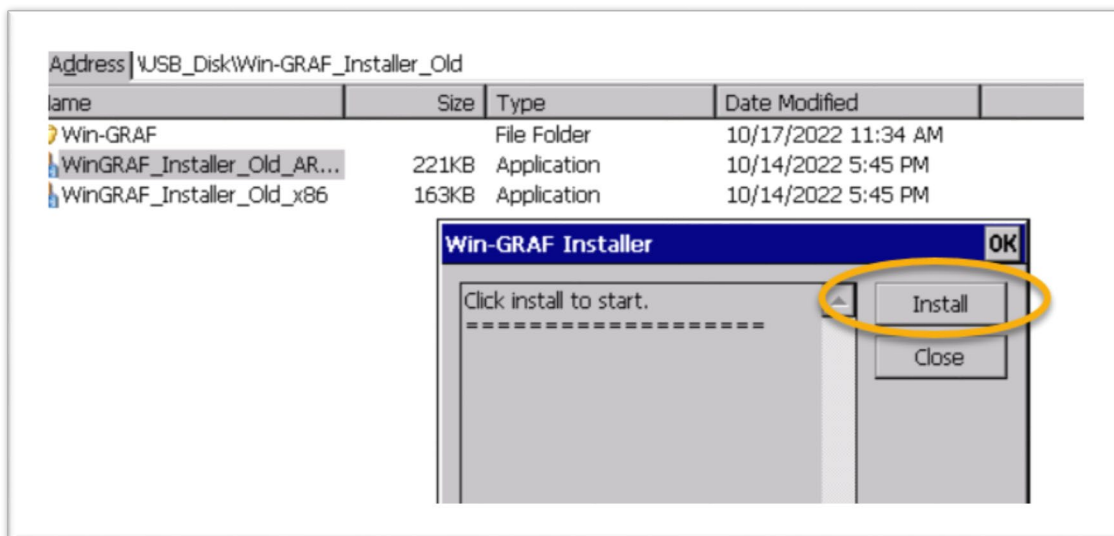
Open the file folder “Win-GRAF_Installer_Old” from pen drive or micro SD card. Capture as below:

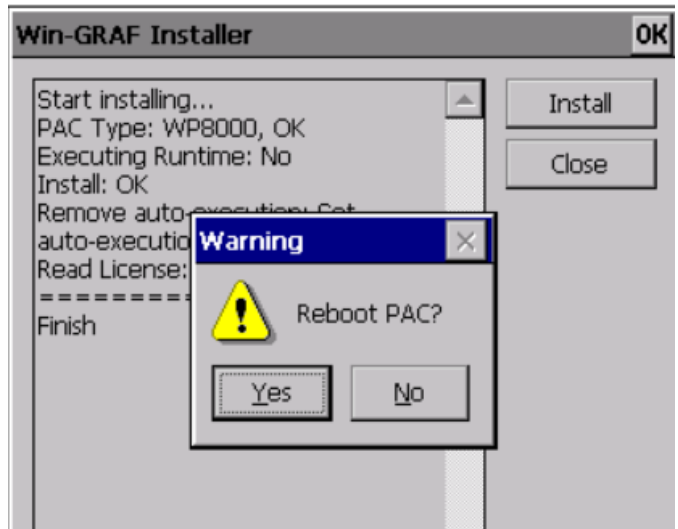
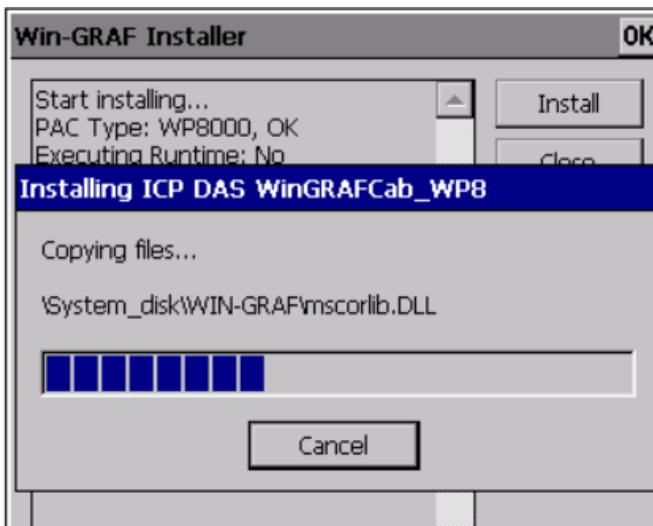


According to different CPUs, different execution files have to be selected:

- **XP-8x28-CE6** PACs: please install “WinGRAF_Installer_Old_x86.exe”
- **WP-9xx8-CE7, WP-8x28-CE7, WP-5238-CE7, VP-x2x8-CE7** PACs: please install “WinGRAF_Installer_Old_ARMv4l.exe”

After the PAC is successfully updated, reboot the PAC.





7 Ethernet Port (Workbench Port) Settings

Win-GRAF runtime (2.xx) or above version can set the Ethernet port.

Keep it as default **1100**. After setting, click “Set” button and reboot Win-GRAF Runtime to save the changes.

