

Packing List

Apart from this guide, this package includes following items:



VP-4238-CE7



Stylus Pen



Panel clip * 4



I/O Slot Lid*3



Screwdriver



M4 x 30L Screw * 4



microSD card and
SD/microSD adapter

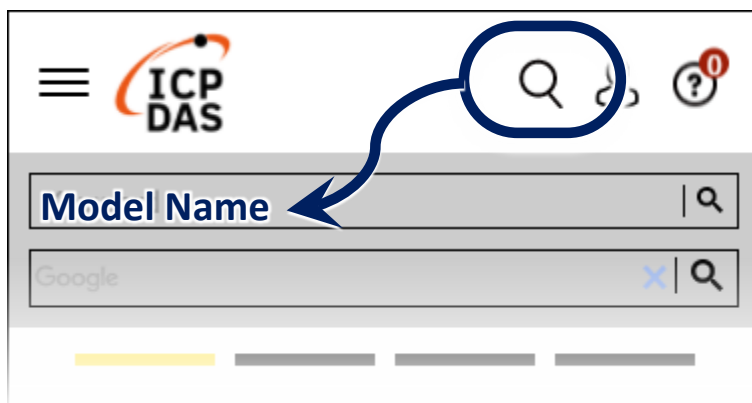
Resources

How to search for drivers, manuals and spec information from ICP DAS website.

• For Desktop Browser



• For Mobile Web



Technical Support

service@icpdas.com

www.icpdas.com

1 Setting up ViewPAC

- 1) Ensure that the rotary switch is set to the “0” position.
- 2) Connect the positive terminal (+) of the power supply to the terminal PWR and the negative terminal (-) of the power supply to the P.GND.

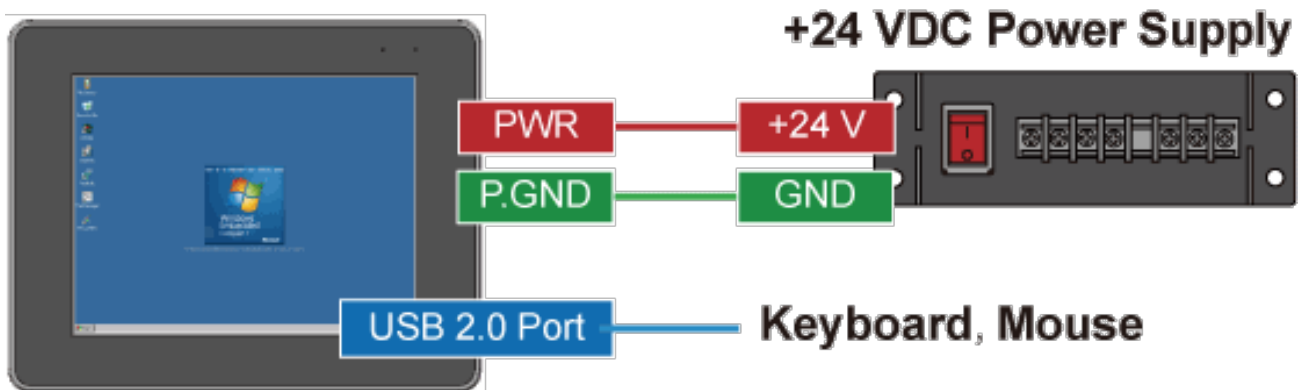


The input range of power supply is +12 to +48 V_{DC}.

- 3) Connect the USB mouse or USB keyboard to the USB port.



The rotary switch must be placed in the “0” position



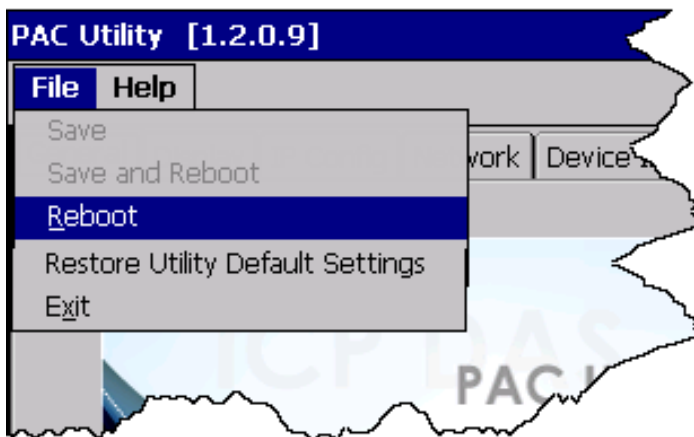
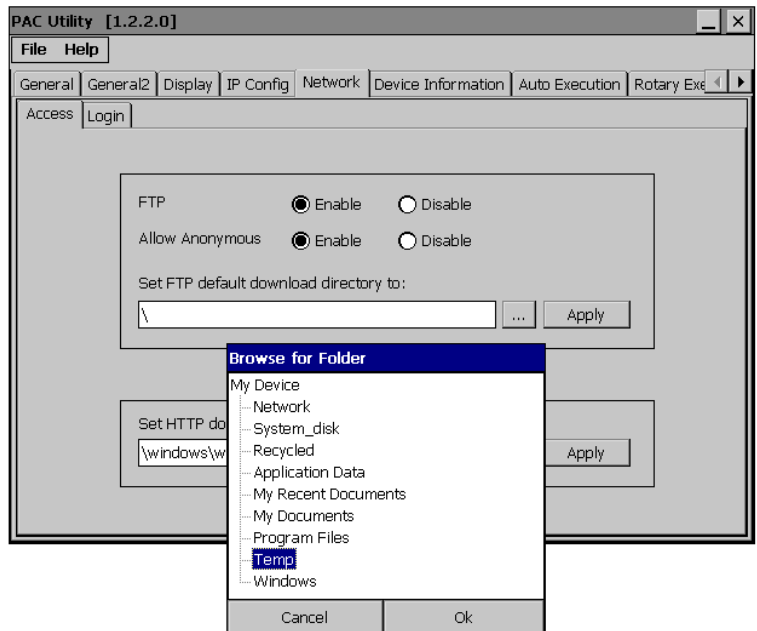
- 4) Turn on the ViewPAC.

2 Use PAC Utility to Manage the ViewPAC

1) Double-click the shortcut of “PAC Utility” on the desktop.



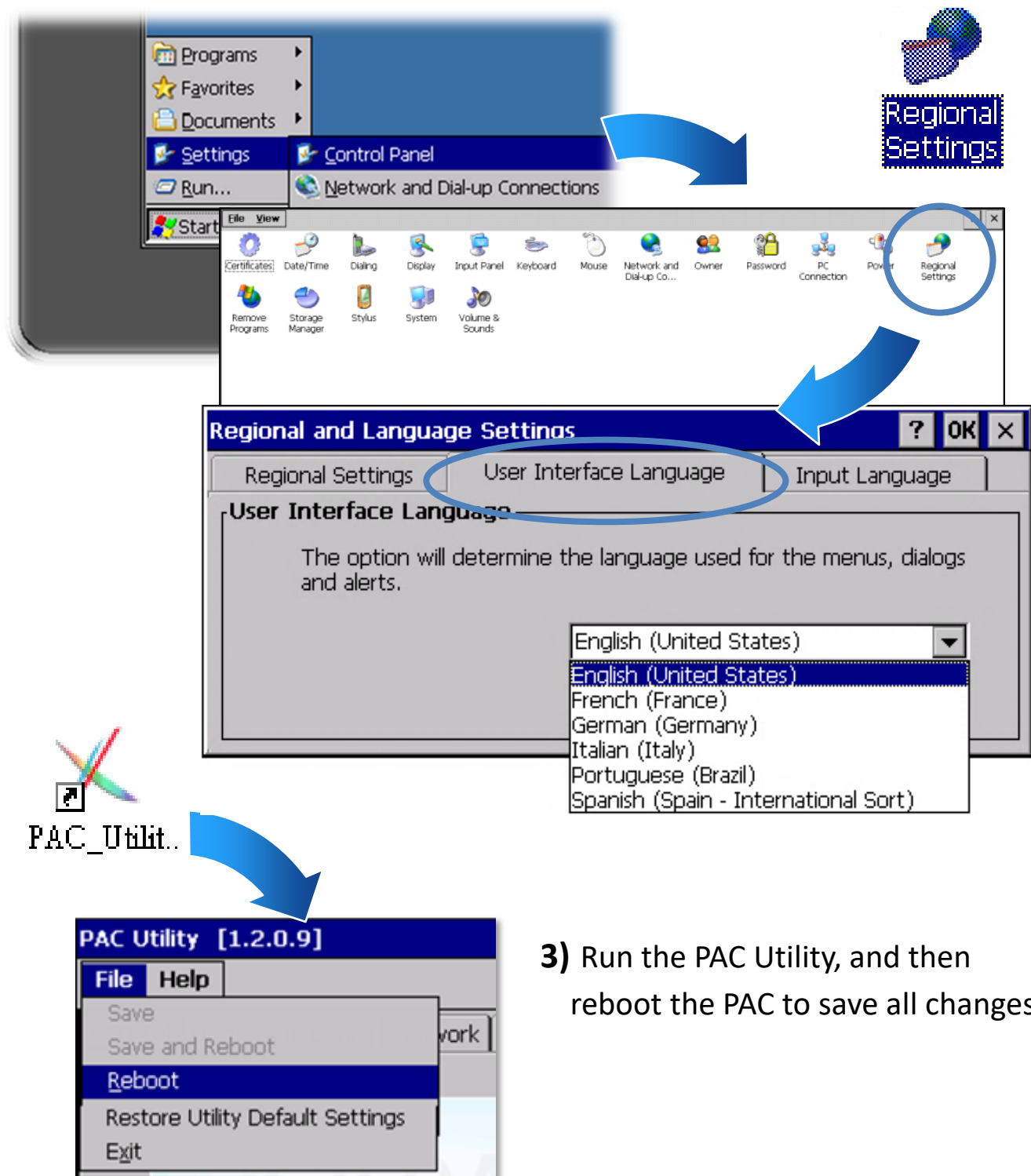
2) Configure IP address (DHCP),
FTP Server, auto execution
files..., etc.



3) Reboot the ViewPAC to
save all changes.

3 Change the Language

- 1) Select "Start", choose "Settings", click "Control Panel", and then click Regional Settings.
- 2) Click "User Interface Language" tab, drop down to select the language, and click OK.



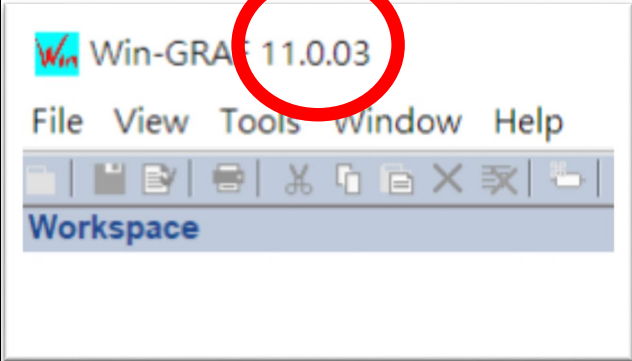
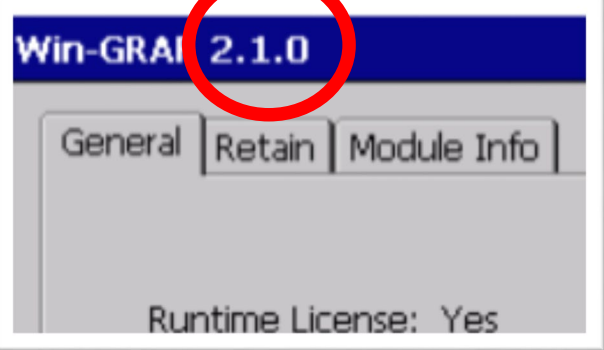
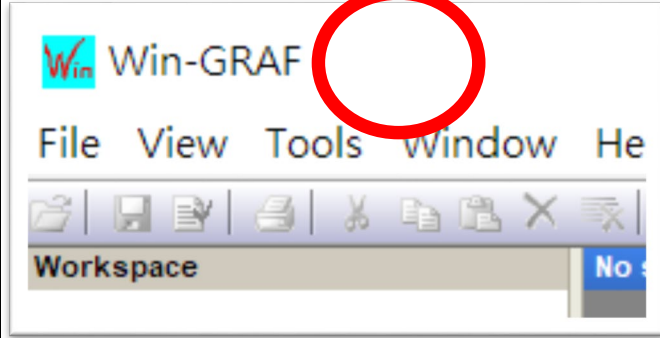
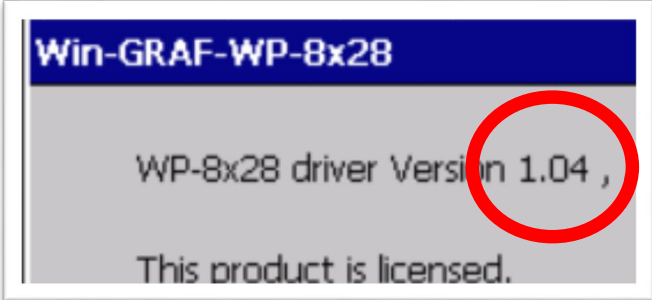
- 3) Run the PAC Utility, and then reboot the PAC to save all changes.

4 Version Identification

The match version rules for Workbench and Runtime:

- **Workbench 11.0** with **Runtime Ver. 2.xx (factory default)**
- Workbench **1.08** with Runtime Ver. **1.xx**


Figure for Version confirmation

Workbench 11.0	Runtime Ver. 2.xx
	
Workbench 1.08	Runtime Ver. 1.xx
※There's no version number on the top-left window. 	

Note: Win-GRAF runtime must be matched with Win-GRAF Workbench V11 (or later)

5 Download the Latest Win-GRAF Workbench V11 Along with the Runtime

Key in “**win-graf**” into Search Box at ICP DAS home page. Find and download Win-GRAF Workbench V11 from the “Software download” Tab.



Module: Win-GRAF
Info: Win-GRAF home page, includes all informa

Win-GRAF Software Introduction

PAC Features

Selection Guide

Comparison of Win-GRAF PACs

Authorization Instructions

Software Download

Function & Application

Win-GRAF FAQ

Download Win-GRAF Workbench:

File Name	Version	File Date	Download Link	Remark
Win-GRAF Workbench Software	11.0.03	2023-01-12	Installer	Full software

6 Restore Old Version Win-GRAF Runtime (1.xx)

Win-GRAF runtime (2.xx) does not fully support files compiled by Win-GRAF Workbench version 1.08. If you’d like to restore the old version runtime, please download and restore the runtime of PAC by yourself to **restore it back to the 1.xx version** of Win-GRAF runtime.

The method to restore is as follows:

- 1) Drop down to the end of this Tab and download old version runtime.

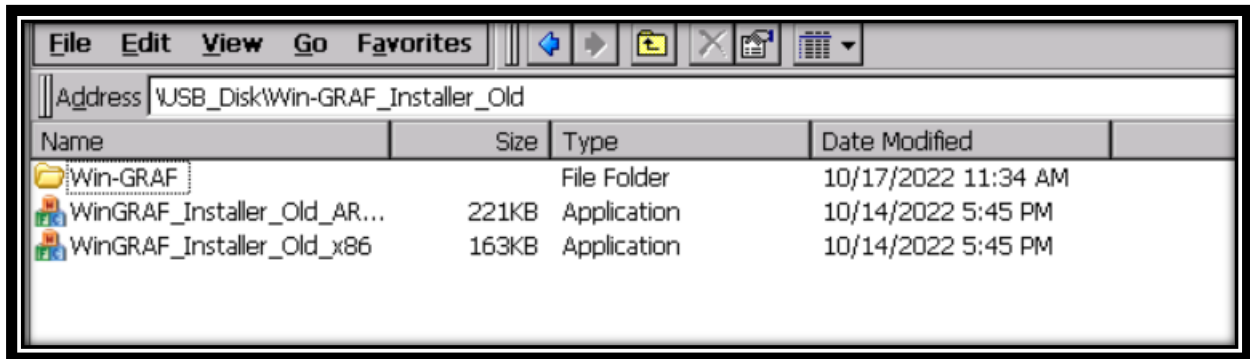
Previous Win-GRAF Workbench and Drivers:

File Name	File Date	Download Link
Workbench 1.08	2015-07-28	Installer
VP-v2x8-CE7	2018-11-04	

2) Copy “**Win-GRAF_Installer_Old.Zip**” file into pen drive or micro SD card, and unzip it.

3) Install the runtime

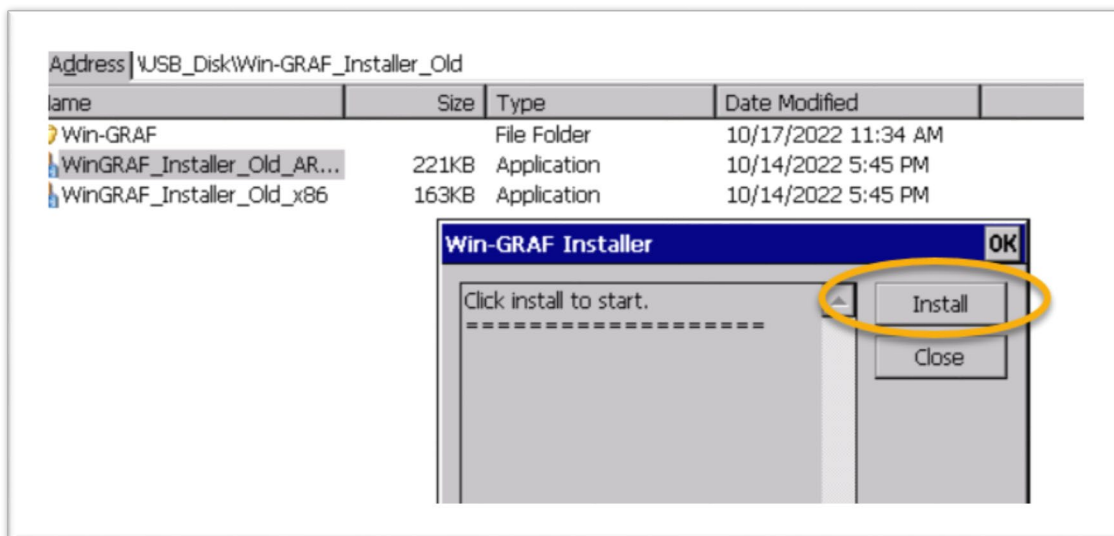
Open the file folder “Win-GRAF_Installer_Old” from pen drive or micro SD card. Capture as below:

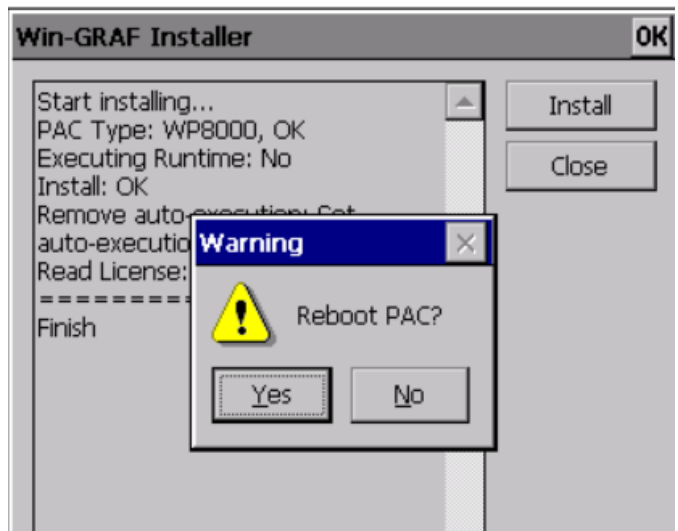
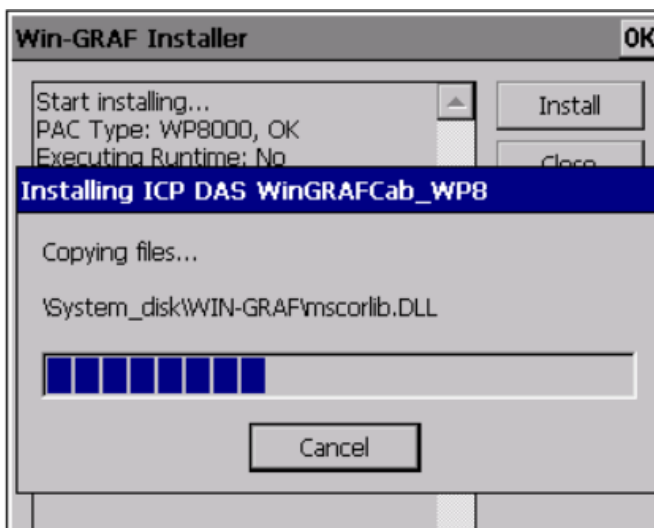


According to different CPUs, different execution files have to be selected:

- **XP-8x28-CE6** PACs: please install “WinGRAF_Installer_Old_x86.exe”
- **WP-9xx8-CE7, WP-8x28-CE7, WP-5238-CE7, VP-x2x8-CE7** PACs: please install “WinGRAF_Installer_Old_ARMv4l.exe”

After the PAC is successfully updated, reboot the PAC.





7 Ethernet Port (Workbench Port) Settings

Win-GRAF runtime (2.xx) or above version can set the Ethernet port.

Keep it as default **1100**. After setting, click “Set” button and reboot Win-GRAF Runtime to save the changes.

