



User Manual

Version 1.2.0 July 2023

GW-2492M

BACnet/IP Server to Modbus RTU Master Gateway



Written by Johney

Table of Contents

1. General Information	4
1.1 BACnet/IP Protocol	4
1.2 Modbus Protocol	4
1.3 About GW-2492M	5
1.4 Features.....	6
1.5 Specifications	7
1.5.1 GW-2492M (BACnet/IP Server to Modbus RTU Master Gateway).....	7
2. Hardware.....	8
2.1 Size (Unit : mm)	8
2.2 Appearance.....	9
2.3 LED Indicator	10
3. Getting Started With GW-2492M.....	11
3.1 Wiring Preparation	11
3.2 GW-2492M Web Configuration	12
3.3 Import/Export Configuration	20
3.4 How to restore default Account/Password.....	21
3.5 How to update the firmware	22
4. GW-249xM Software Utility	24
4.1 GW-249xM Utility Overview and Summary	25
4.2 Importing and Exporting CSV Files by Utility.....	26
4.3 Ethernet IP/Serial Port/BACnet ID Configuration	28
4.4 Modbus RTU Configuration in the GW-2492M.....	30
4.5 BACnet Object Configuration	35

Important Information

Warranty

All products manufactured by ICP DAS are under warranty regarding defective materials for a period of one year, beginning from the date of delivery to the original purchaser.

Warning

ICP DAS assumes no liability for any damage resulting from the use of this product. ICP DAS reserves the right to change this manual at any time without notice. The information furnished by ICP DAS is believed to be accurate and reliable. However, no responsibility is assumed by ICP DAS for its use, not for any infringements of patents or other rights of third parties resulting from its use.

Copyright

Copyright © 2021 by ICP DAS Co., Ltd. All rights are reserved.

Trademark

Names are used for identification purpose only and may be registered trademarks of their respective companies.

Contact us

If you encounter any problems while operating this device, feel free to contact us via mail at: service@icpdas.com.

1. General Information

1.1 BACnet/IP Protocol

BACnet is a communications protocol for building automation and control networks. It is an ASHRAE, ANSI, and ISO standard protocol. BACnet was designed to allow communication of building automation and control systems for applications such as heating, ventilating, and air-conditioning control, lighting control, access control, and fire detection systems and their associated equipment. The protocol provides mechanisms for computerized building automation devices to exchange information, regardless of the particular building service they perform.

BACnet/IP is based on Ethernet and used UDP to transmit BACnet network packets (NPDU). Messages are transmitted such as "Who-is" and "Who-has" through broadcast feature of UDP. The feature allows that the user could search for device information without knowing the actual location of the device.

1.2 Modbus Protocol

Modbus protocol mainly has two versions RTU and TCP. RTU can be realized through COM interface and TCP can be realized through Ethernet. These two protocols are commonly used in industrial control and automation industry.

Modbus RTU is used to transmit and exchange data via RS-485. It's a serial communication between master and slave. Every slave has a unique address to identify. Users could implement communication through using different function codes.

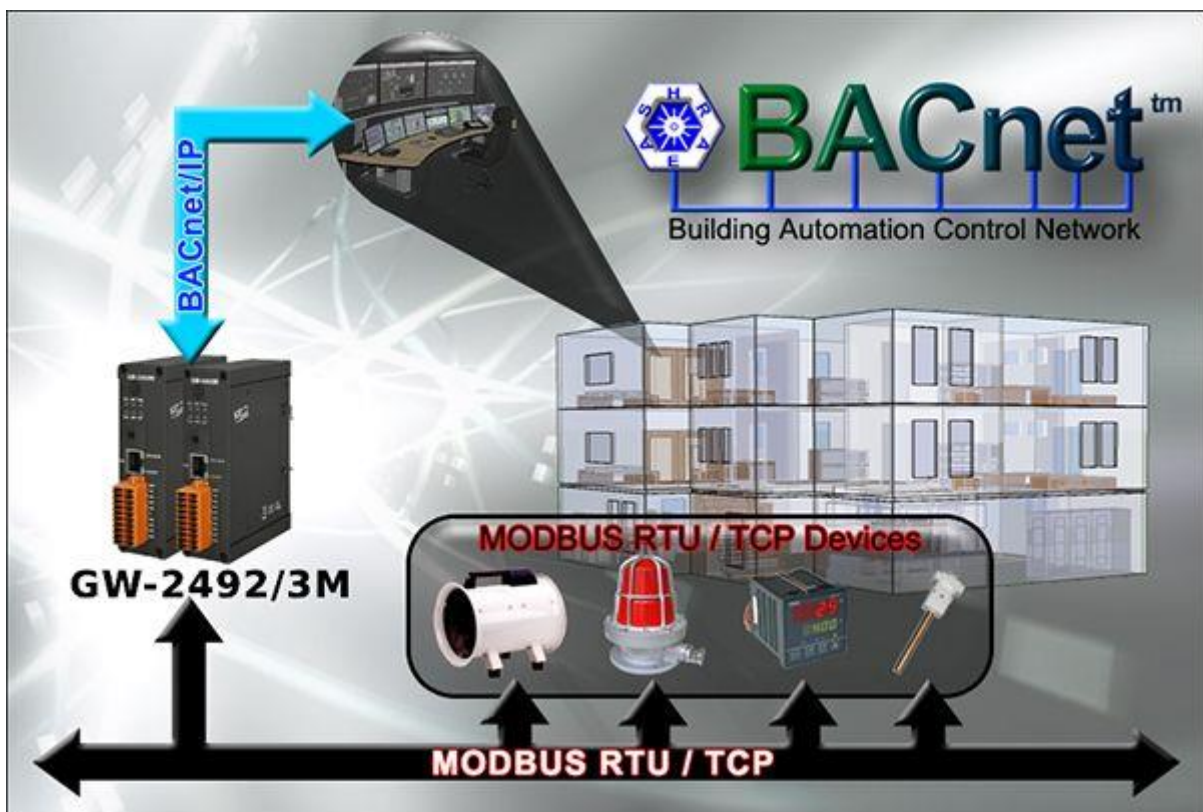
MODBUS TCP is a variant of MODBUS RTU. MODBUS messages are passed in an "Intranet" or "Internet" environment by using the TCP/IP protocol. The most common use of this protocol is to connect PLCs and gateways to other simple fieldbus or I/O networks via Ethernet.

1.3 About GW-2492M

GW-2492M is a BACnet/IP Server to Modbus RTU Master Gateway. It allows BACnet client application to access Modbus RTU devices via GW-2492M module. The BACnet/IP protocol is used to relay and exchange information between building devices. GW-2492M contains a large number of BACnet objects (AI, AO, AV, BI, BO, BV, MSI, MSO, MSV) gives you flexibility in mapping Modbus RTU registers to any combination of BACnet objects. Multiple BIBBs (DS-RP-B, DS-RPM-B, DS-WP-B, DS-WPM-B,...etc.) are supported. All the data transfer is configurable using a standard web browser.

1.4 Features

- Read/Write Modbus registers via BACnet objects.
- Configurable BACnet/IP Server.
- Configurable Modbus RTU Master.
- Supports BACnet AI, AO, AV, BI, BO, BV, MSI, MSO, MSV Object Types
- Supports Modbus discrete inputs, coils, input registers and holding registers
- Supports up to 180 DI, 180 DO, 180 AI and 180 AO to transfer to BACnet Objects
- Simple data translation allows you to manipulate data as it passes between protocol



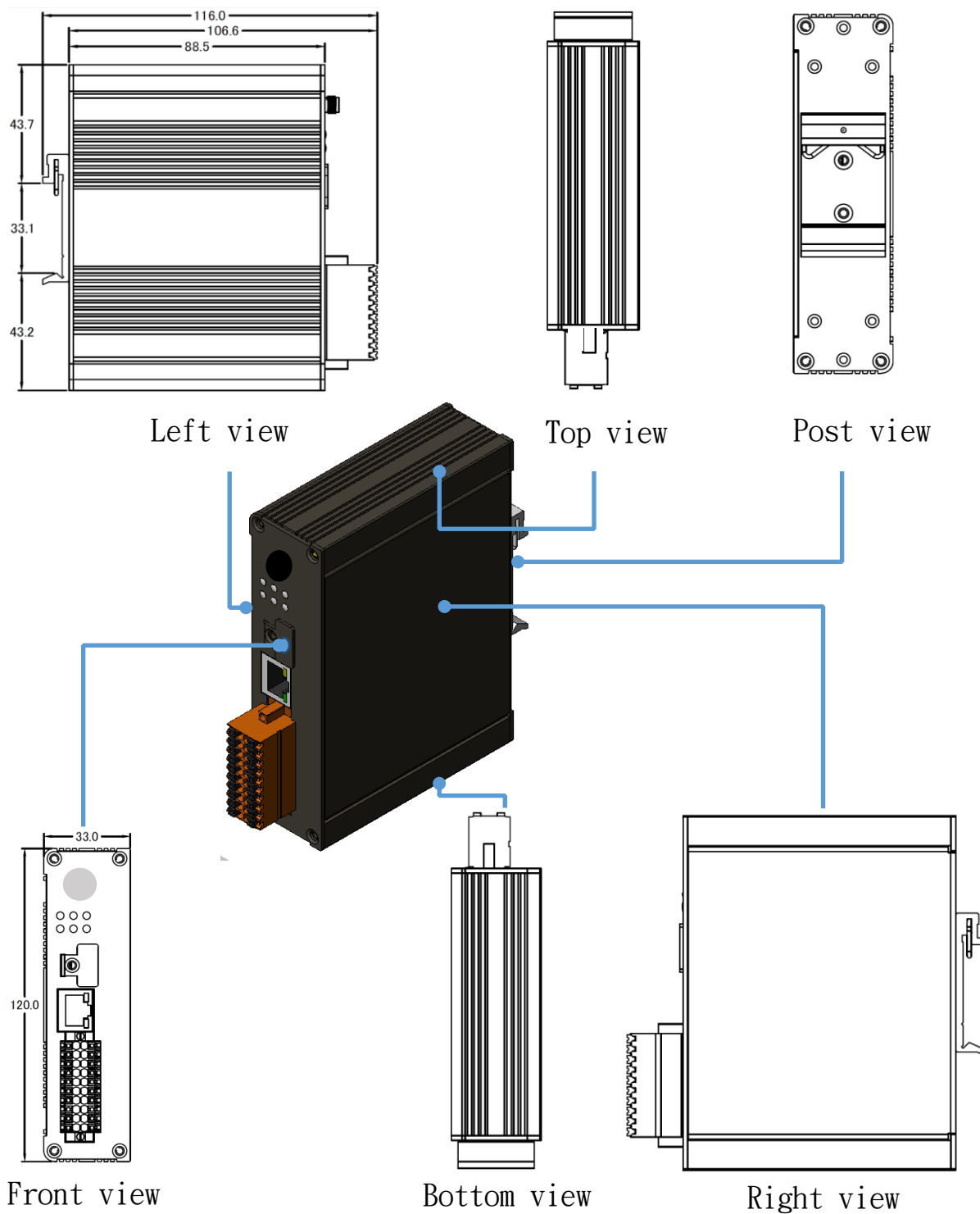
1.5 Specifications

1.5.1 GW-2492M (BACnet/IP Server to Modbus RTU Master Gateway)

Ethernet	
Controller	10/100Base-TX Ethernet Controller (Auto-negotiating, Auto_MDIX)
Connector	RJ-45 with Ethernet indictor
Protocol	BACnet/IP Server
Max. Connections	8
BIBBS	DS-RP-B, DS-RPM-B, DS-WP-B, DS-WPM-B, DM-DDB-B, DM-DOB-B, DM-DCC-B, DM-RD-B
COM Interface	
Connector	Terminal block (RS485:D+, D- ; RS232:TXD, RXD, GND)
Baud Rate (bps)	1200, 2400, 4800, 9600, 19200, 38400, 57600, 115200
Comm. format	N81, N82, O71, O81, E71, E81
Terminator Resistor	Built-in 120 ohm terminator resistor, enabled/disabled via Jump
Isolation	3 kV VDC for DC to DC, 2500 Vrms for photo couple
Protocol	BACnet RTU Master
Maximum Slaves	32
Power	
Protection	Power reverse polarity protection
EMS Protection	ESD, Surge, EFT
Supply Voltage	+10 VDC ~ +30 VDC
Consumption	5 W @ 24 VDC
LED Indicator	
LED (Round)	Power (1), BACnet MS/TP Status (1), BACnet MS/TP Net(1), Modbus TCP TxD / RxD / Link (3)
Ethernet LED	Ethernet LED Ethernet Status (RJ-45) (2)
Mechanism	
Installation	DIN-Rail
Casing	Metal
Dimensions	33 x 120 x 116 mm (W x L x H)
Environment	
Operating Temp.	-25°C ~ +75°C
Storage Temp.	-30°C ~ +85°C
Humidity	10 ~ 90% RH, non-condensing

2. Hardware

2.1 Size (Unit : mm)

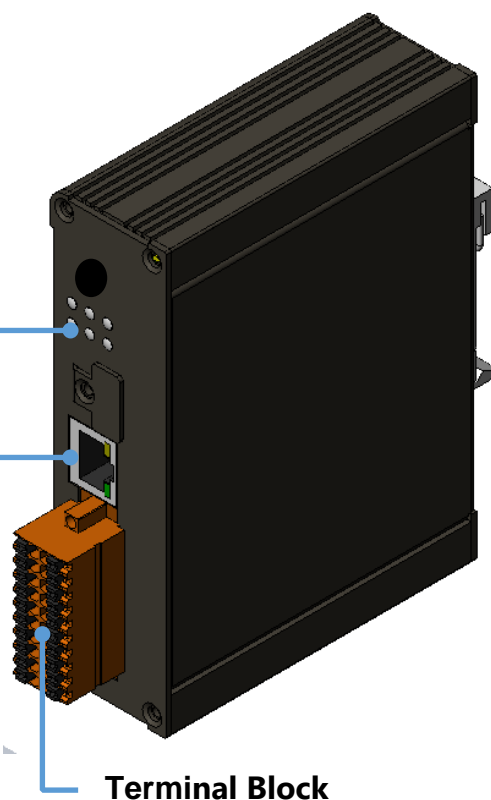


2.2 Appearance

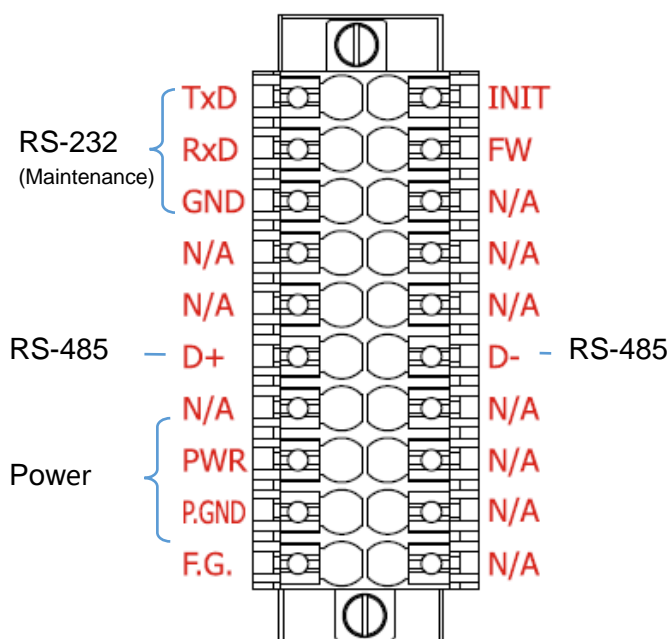
LED Indicator

Ethernet Port

The GW-2492M is equipped with a RJ45 port for Ethernet LAN connection. When 100BASE-TX is operating, the 10/100M LED is lit orange. When an Ethernet link is detected and an Ethernet packet is received, the Link/Act LED is lit green.



GW-2492M



2.3 LED Indicator

There are six LEDs to indicate the various states of the GW-2492M. The following is the illustration of these six LEDs.

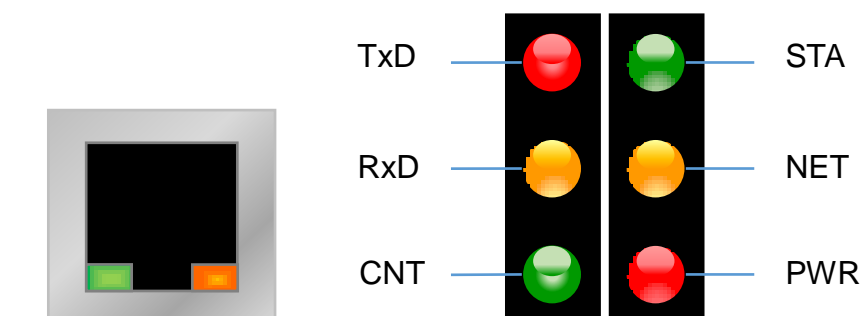


Figure 2.1 LED position of the GW-2492M

LED Name	GW-2492M Status	LED Status
ALL LEDs	FW Updating Mode	LED will be twinkled sequentially.
	FW Initial Mode	LED will be twinkled per 500ms.
PWR (Module)	Power On	On
	Power Failure	Off
NET (BACnet/IP)	Connected by least one client	On
	No clients connect	Blink per 200 ms
STA (BACnet/IP)	Communication OK	On
	Communication Failure	Blink per 200 ms
CNT (Modbus)	Connect to least one device	On
	No devices are connected	Blink per 200 ms
RxD (Modbus)	Data reception	On
	No Data reception	Off
TxD (Modbus)	Data transmission	On
	No Data reception	Off

Table 2.1 LED indication of the GW-2492M

3. Getting Started With GW-2492M

This chapter mainly describes the operation process of the GW-2492M.

3.1 Wiring Preparation

Before setting up the GW-2492M, please complete the necessary preparation about wiring.

Please follow Figure 2.1 wiring diagram, to wire the following items:

1. Power Supply : +10 VDC ~ +30 VDC
2. RS-485 : D+ & D- (for GW-2492M's serial communication)
3. Ethernet : Connect the GW-2492M and computer into the same LAN through cable or Ethernet Switch/Hub.
4. INIT : Connect to GND to initial mode. (Address IP:192.168.255.1)
5. FW : Connect to GND and insert RJ45 to download mode. (LED will be twinkled.)

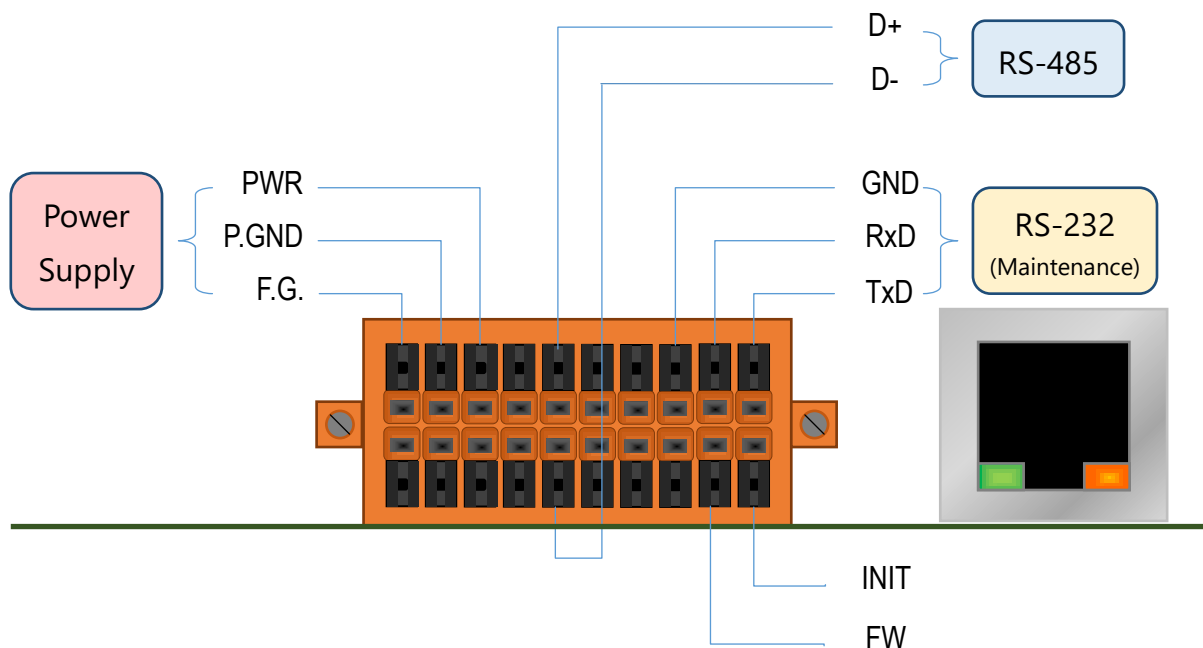


Figure 3.1 GW-2492M Wiring Diagram

3.2 GW-2492M Web Configuration

Please follow those steps to configure the GW-2492M via web browser.

Step0 :

Use the default account “admin” and the password “admin” to enter the main setting page.



Account:

Password:

Step1 :

The firmware version is shown on the web.

System Information

System

Firmware Version

Account Management

Module Information

Model Name	GW-2492M
Firmware Version	v1.100

© ICP DAS Co., Ltd. All Rights Reserved

Step2 :

The GW-2492M is based on the information security law. Users need to change account or password for the first time before using it.

ICP DAS GW-2492M BACnet/IP to Modbus Gateway

System Information

System

1 Account Management

Account Management

Account	ADMIN
New Password
Retype New Password

2 Save

© ICP DAS Co., Ltd. All Rights Reserved

Step3 :

Please reflash the web page and login again with new account and password. “Module Setting” page will appear. Users could set the IP of the module.

ICP DAS GW-2492M BACnet/IP to Modbus Gateway

System Information Module Setting

Port Setting

Ethernet

Serial Port

Protocol Setting

Modbus

BACnet/IP

Other

Import/Export

Factory Default

Ethernet Configurations

LAN1

IP	192.168.255.1
Mask	255.255.0.0
Gateway	192.168.0.1

PORT

Web Server Port	80
Modbus TCP Port	502

Modify

© ICP DAS Co., Ltd. All Rights Reserved

Step4 :

Press “Serial Port” to modify the parameters of the Modbus.

ICP DAS GW-2492M BACnet/IP to Modbus Gateway

System Information Module Setting

Port Setting

- Ethernet
- Serial Port**

Protocol Setting

- Modbus
- BACnet/IP

Other

- Import/Export
- Factory Default

Modbus Configurations

COM	RS-485
Baud Rate	115200
Data Format	N,8,1

Modify

© ICP DAS Co., Ltd. All Rights Reserved

Step5-1 :

Press “Modify” to configure the parameters of Modbus in the Modbus page.

ICP DAS GW-2492M BACnet/IP to Modbus Gateway

System Information Module Setting

Port Setting

- Ethernet
- Serial Port

1 Protocol Setting

- Modbus**
- BACnet/IP

Other

- Import/Export
- Factory Default

Modbus Configurations

Modbus Information

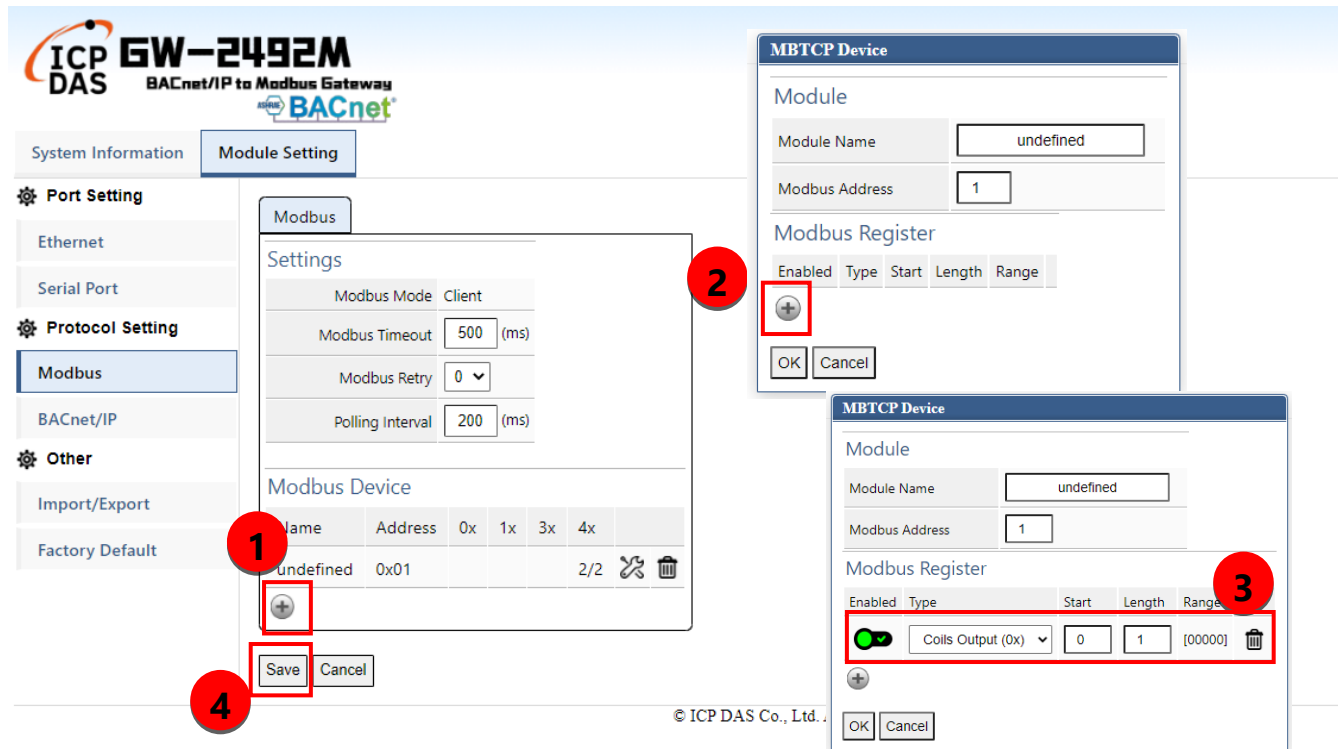
Modbus Mode	RTU Master
Modbus Timeout	500
Modbus Retry	0
Polling Interval	200

2 Modify

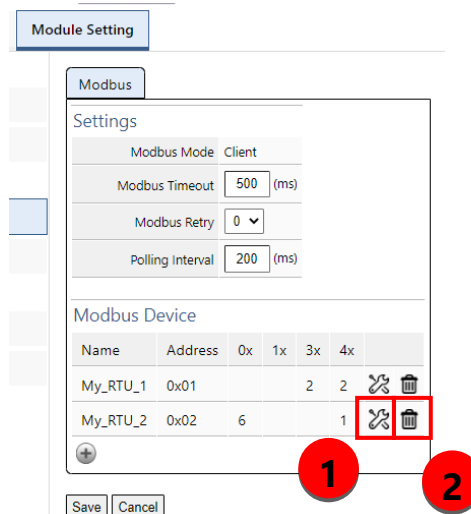
© ICP DAS Co., Ltd. All Rights Reserved

Step5-2 :

- (1) Press “+” button to add a Modbus RTU node.
- (2) After editing “Modbus Name” and “Address”, press “+” button to add Modbus registers.
- (3) Press “+” button to add Modbus function codes and registers range.
- (4) Finally, the users need to press “save” to save all Modbus configuration into GW-2492M.
- (5) The users need to restart GW-2492M to make configuration work.



- (1) Press the icon to edit a Modbus registers of that node
- (2) Press the icon to delete that Modbus node.



Step6 :

Press “+” button to add a BACnet object.

ICP DAS GW-2492M BACnet/IP to Modbus Gateway

System Information Module Setting

Port Setting

- Ethernet
- Serial Port

Protocol Setting

- Modbus
- BACnet/IP**

Other

- Import/Export
- Factory Default

BACnet

BACnet Objects

Object	No(0-255)	Type	Address	Format	Index	Range
+						

Save

© ICP DAS Co., Ltd. All Rights Reserved

- (1) The “Object” field is BACnet object which support AI/AO/AV/BI/BO/BV/MI/MO/MV.
- (2) The “No” field is the serial number of the BACnet object. If you have AI*3 and AO*4, you need assign the No as AI-0, AI-1, AI-2, AO-0, AO-1, AO-2, AO-3.
- (3) The “Type” field is the Modbus register type. The common configuration is shown below.
 BACnet BO object maps to Modbus Coil Output(0x)
 BACnet BI object maps to Modbus Input Status(1x)
 BACnet AO object maps to Modbus Holding Register(4x)
 BACnet AI object maps to Modbus Input Register(3x)
- (4) The “Address” field is the start address of the Integrated Modbus Register (Note1).
- (5) The “Format” field is the data format which support bool/int16/uint16/int32/uint32/float.
- (6) The “Index” field is reserved.
- (7) The “Range” field is the exact Modbus address of the register.

ICP DAS GW-2492M BACnet/IP to Modbus Gateway

System Information Module Setting

Port Setting
 Ethernet
 Serial Port

Protocol Setting
 Modbus
BACnet/IP
 Other

Import/Export
 Factory Default

BACnet

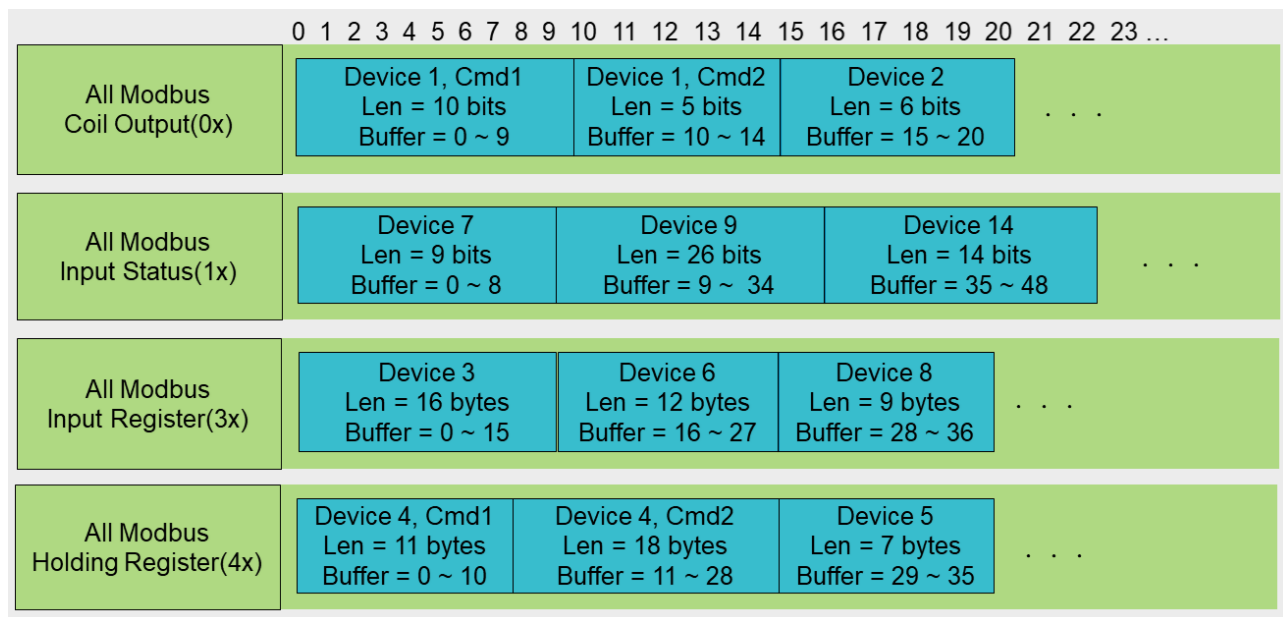
BACnet Objects

Object	No(0-255)	Type	Address	Format	Index	Range
AI	0	3x	0	Int16	0	[30000]
AI	1	3x	1	Int16	0	[30001]
AO	0	4x	0	Int16	0	[40000]
AO	1	4x	1	Bool	0	[40001]
BI	0	1x	0	Bool	0	[10000]
BI	1	1x	1	Bool	0	[10001]
BI	2	1x	2	Bool	0	[10002]

Save

Note 1.

In the GW-2492M, all remote Modbus data which come from different remote Modbus RTU devices will be integrated by their register type. It means that all remote Coil Output data will be putted into a Coil Output integrated buffer. All remote Input Status data will be putted into an Input Status integrated buffer. There are also have Holding Register integrated buffer and Input Register integrated buffer in the GW-2492M. They were integrated as the illustration shown below.



The BACnet object will read or write the data from those integrated buffers. Those Modbus data with the same type will be ordered by the Modbus Configuration Index in the integrated buffer. The first configuration Modbus command will be in the first address of the buffer. The order was shown below.

Modbus Retry		0 ▾			
Polling Interval		200 (ms)			

Modbus Device

Name	Address	0x	1x	3x	4x	
Device1	0x01	10/5				
Device7	0x01		9			
Device2	0x01	6				
Device3	0x01			16		
Device9	0x01		26			
Device6	0x01			12		
Device4	0x01				11/18	
Device8	0x01			9		
Device5	0x01				7	
Device14	0x01		14			

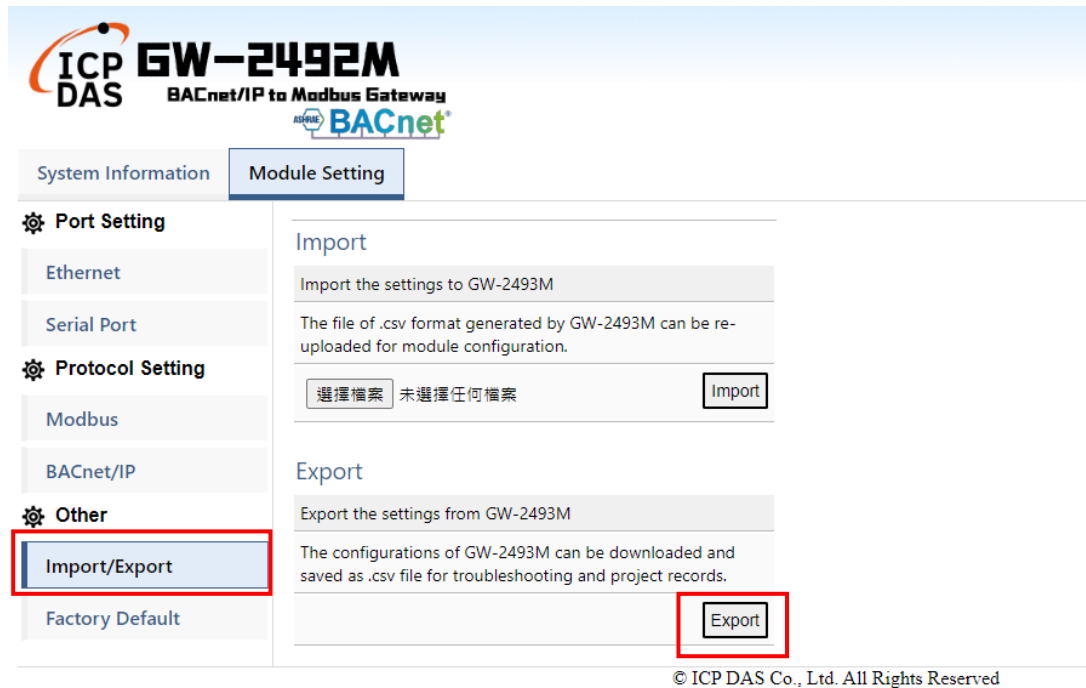
Save Cancel

For example by the illustration in Holding Register(4x), the Device4 and command 1 is the first configuration item of all Holding Register(4x). The Device4 and command 1 occupies the first address of the Holding Register buffer. The "Address" field of the BACnet object means that the address in those integrated buffers. For example by the illustration, if the address of the BACnet "BO" object is 11, it means that the data of the "BO" object comes from the second bit of the Device 1 and command 2 in the Coil Output buffer. If the address of the BACnet "AO" object(int16) is 7, it means that the output data of the "AO" object(int16) will be written to the 8-th words of Device 4 and command 1 in the Holding Register buffer.

3.3 Import/Export Configuration

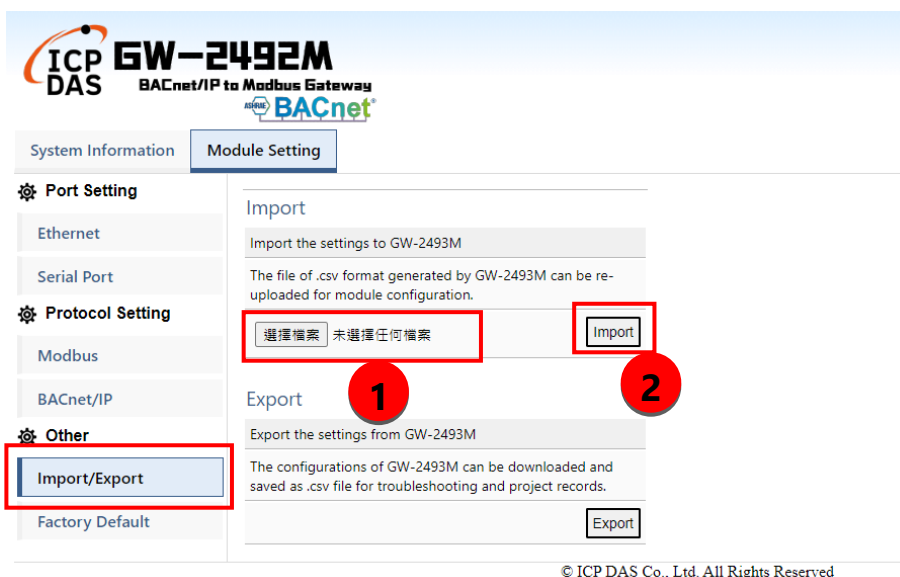
(1) Export All Configurations to CSV file:

The GW-2492M supports export function to write all configurations into a csv file.



(2) Import All Configurations from CSV file :

The users could import all configurations from a CSV file. It is convenient to move all configurations from one GW-2492M to another one. Firstly, the users select the CSV file. And then, they can press “Import” button to import configurations into the GW-2492M modules.



3.4 How to restore default Account/Password

If the users have forgotten the login information, they can follow the steps to restore default login information.

(1) Short the “INIT” and “GND” pin of GW-2492M and turn on the power.

(2) The GW-2492M will restore the login information.

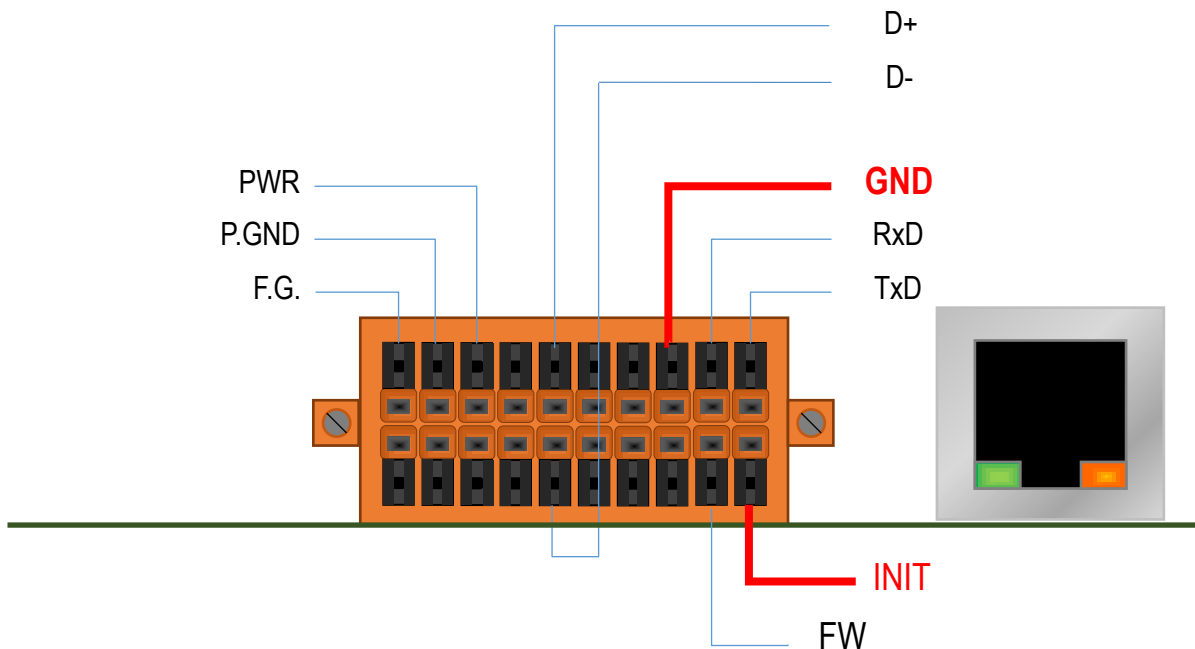
IP : 192.168.255.1

Mask : 255. 255. 0 .0

Gateway: 192.168.0.1

Login Account: admin

Login Password: admin



3.5 How to update the firmware

The GW-2492M can update the firmware via a software tool (Windows) by the following:

1) Download the latest version of the firmware program and update Tool (FW_Update_Tool) on the website of the GW-2492M and store it in a computer that you want to connect to GW-2492M.

- **Update Tool:** Please refers to ->

<https://www.icpdas.com/en/download/show.php?num=7823&model=GW-2492M>

2) Short the “FW” and “GND” pin of the GW-2492M and turn on the power. When the six LEDs of the GW-2492M turn blinking alternately, the GW-2492M is successfully entered the firmware updating mode.

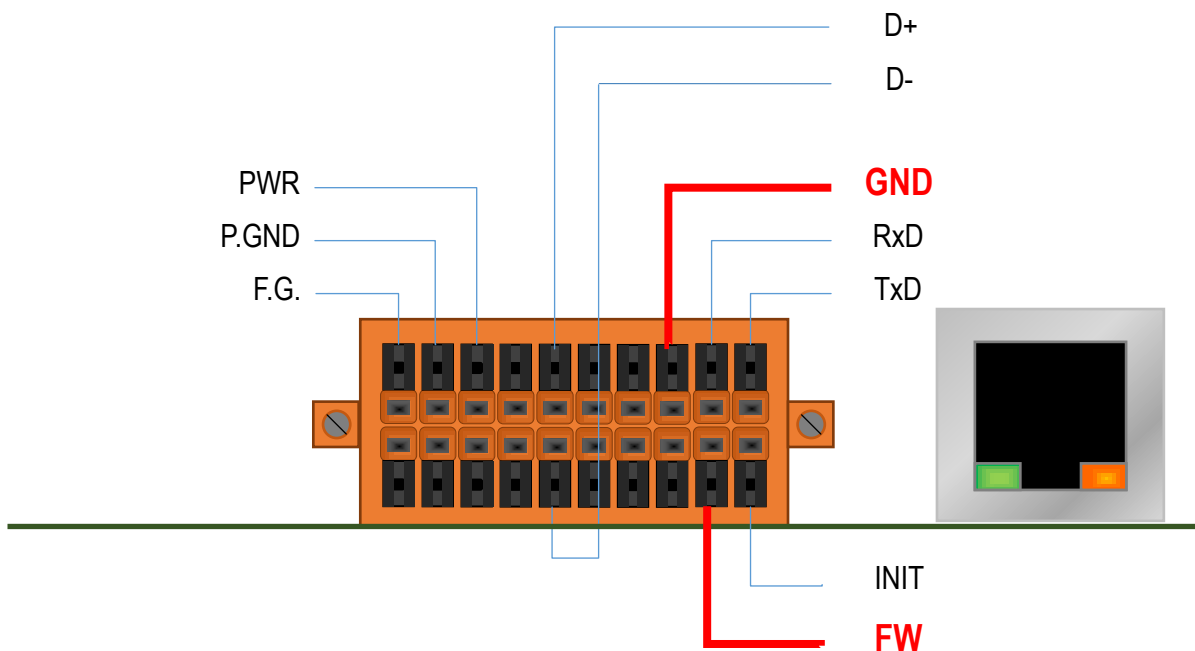


Figure 3.2 GW-2492M FW & GND Pin

3) Execute “FW_Update_Tool.exe” with the administrator privileges (🔒) and follow the steps as

Figure 3.3:

In "Download Interface", select a network port for connecting to GW-2492M

In "Firmware Path", select the latest firmware update file (GW_2492M_xxxx.fw).

In "Firmware Update", click “Update” to start the firmware updating.

4) When the update is completed, “Update OK” will be displayed in the “FW_Update_Tool” window to indicate that the firmware updating is successful. Next, remove the short connection between FW and GND, and reboot the power supply, then check the current firmware version on the Web interface.

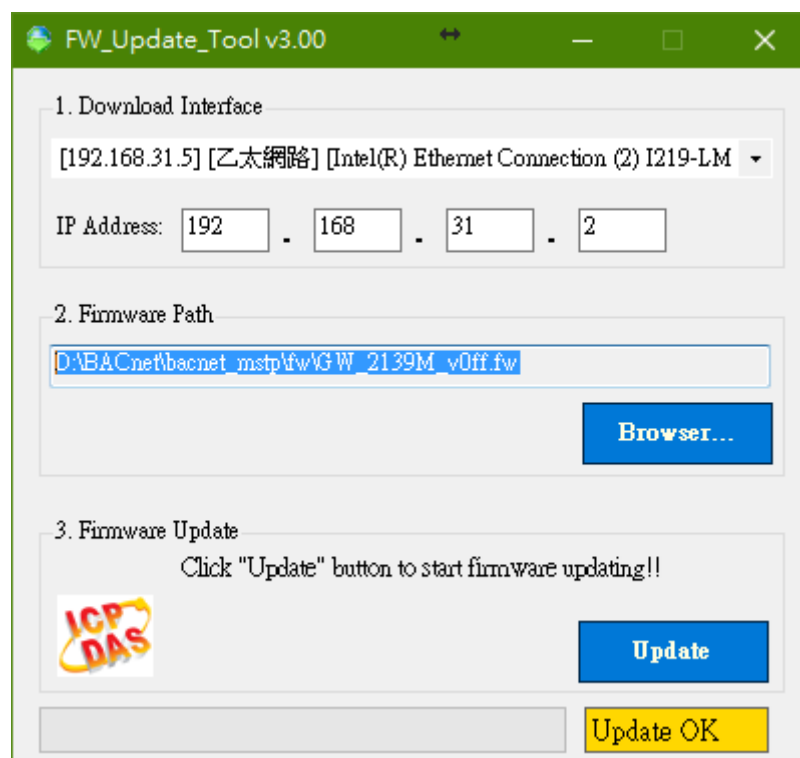


Figure 3.3 FW_Update_Tool firmware update steps

4. GW-249xM Software Utility

The built-in webpage in the GW-2492M can set all kinds of parameters and export the parameters to CSV file for saving easily. ICP DAS also provides the PC version of the utility, which is mainly for generating bulk BACnet objects, and can import the CSV parameter file from the previous GW-2492M into the utility for adding and further editing the objects. In addition, it is also possible to export the parameters into CSV file, which can be imported into other GW-2492M products. This chapter introduces the functions of the GW-249xM utility, how to generate bulk BACnet objects, and how to export and import the web page profiles (CSV files). This utility is applicable to both GW-2492M and GW-2493M products. The download link of the GW-249xM utility is as follows:

<https://www.icpdas.com/en/download/show.php?num=7823&model=GW-2492M>

4.1 GW-249xM Utility Overview and Summary

Figure 4.1 below shows the full picture of the utility. The software provides convenient import and export functions, and kindly divides the parameter settings into three tabs, namely "Ethernet & Serial", "Modbus Devices" and "BACnet Objects" to categorize the complex parameters into easy-to-understand groups. Among them are below.

- (1) **【Ethernet&Serial】** Sets the BACnet IP, serial parameters and BACnet ID.
- (2) **【Modbus Devices】** Set the Modbus devices and registers that GW-2492M polls.
- (3) **【BACnet Objects】** Set the BACnet objects of GW-2492M.

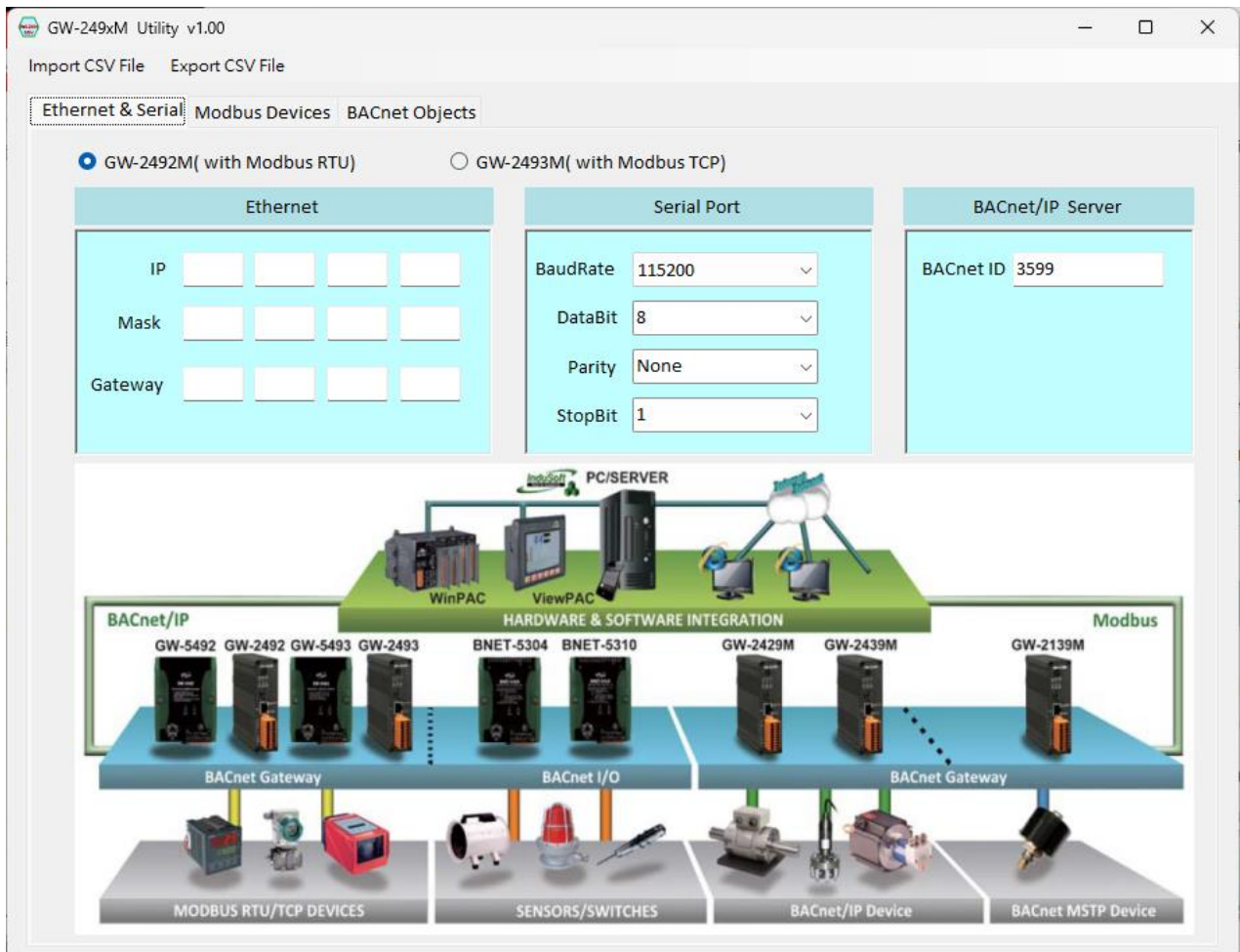


Figure 4.1 Overview of the GW-249xM Utility

4.2 Importing and Exporting CSV Files by Utility

If you already have a GW-2492M module, you can follow the instructions in Chapter 3 of this manual. You can login to the built-in webpage in the GW-2492M to set the relevant parameters and export the CSV file from the webpage for safekeeping. After getting the CSV file of GW-2492M, you can import it into this utility to read the content, and if you need to modify the content, you can also modify it in this utility. Finish modification, you can save the file and then import it to another GW-2492M product in the future.

If you don't have a GW-2492M product and don't have its CSV file, this utility can directly generate the related settings and immediately save the settings as a CSV file. You can transfer the CSV file to the GW-2492M product by "Import/Export" on the webpage.

1. Import method: Select the specified CSV file to import.

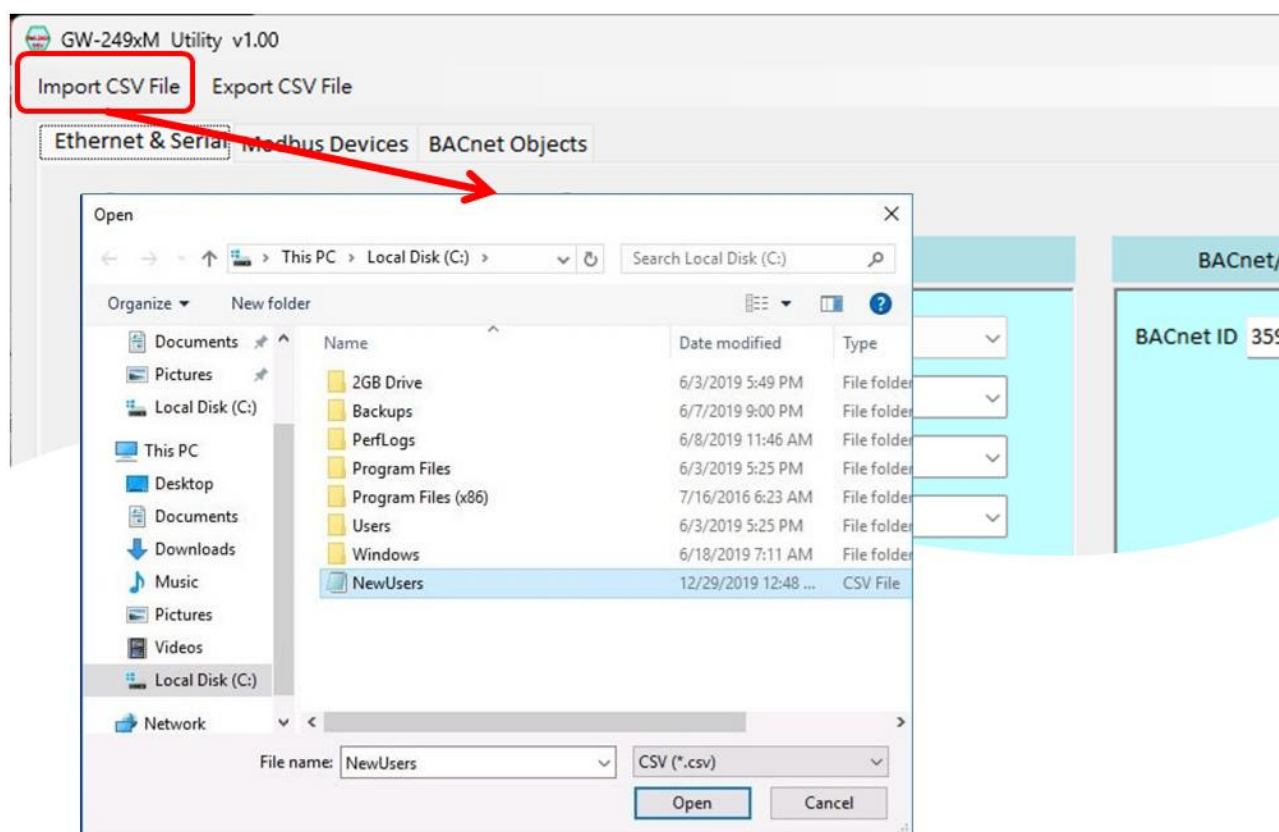


Figure 4.2 Import CSV File

2. Export method: Save all setting to the specified CSV file.

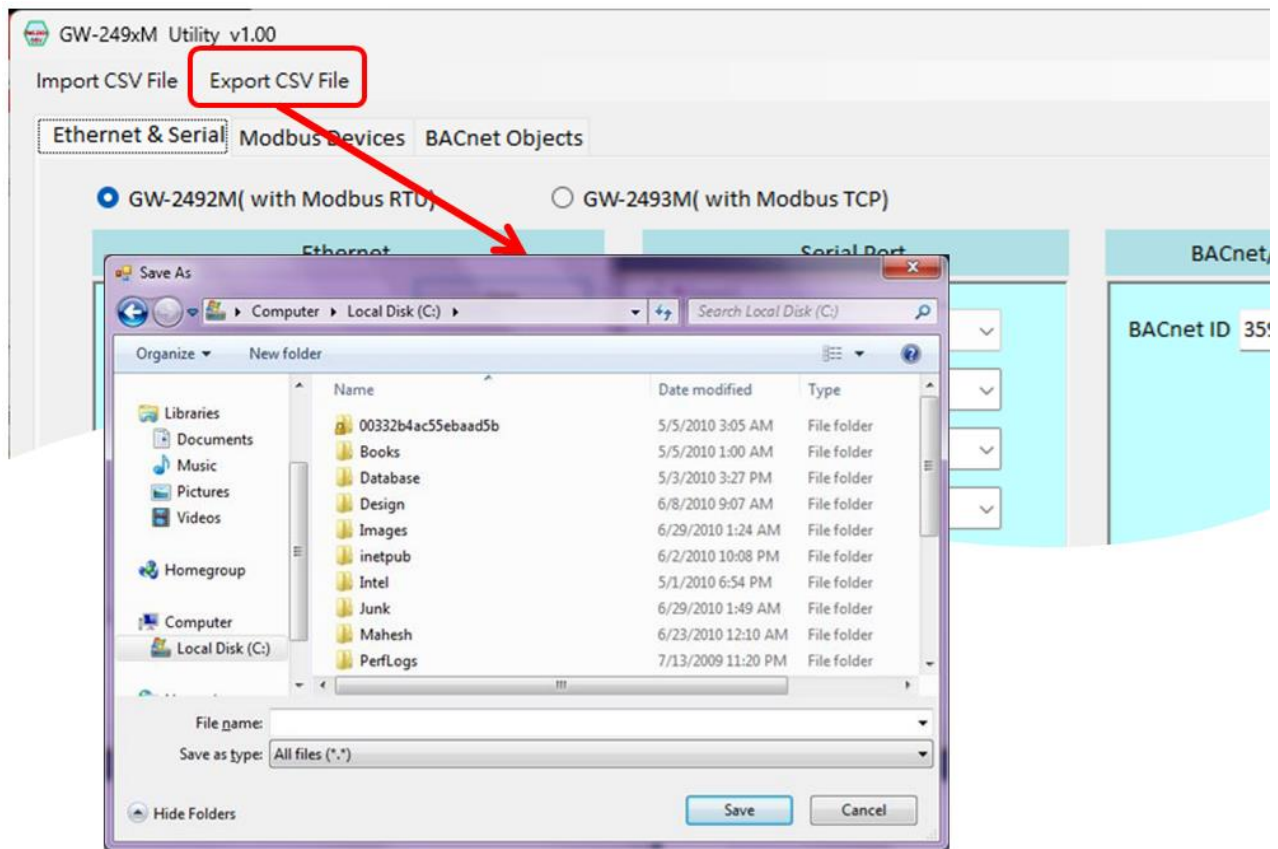


Figure 4.3 Export CSV file

4.3 Ethernet IP/Serial Port/BACnet ID Configuration

There are also ethernet IP and serial port parameters in the built-in webpage of the product. The ethernet IP in this utility means the IP address of BACnet/IP. However, the serial port parameter means the Modbus RTU serial communication settings. The serial port parameter can only be set when the user selects the GW-2492M item on the radio button. After that, GW-2492M will use the serial parameter to poll the connected Modbus RTU device. Please set the parameter according to the actual situation.

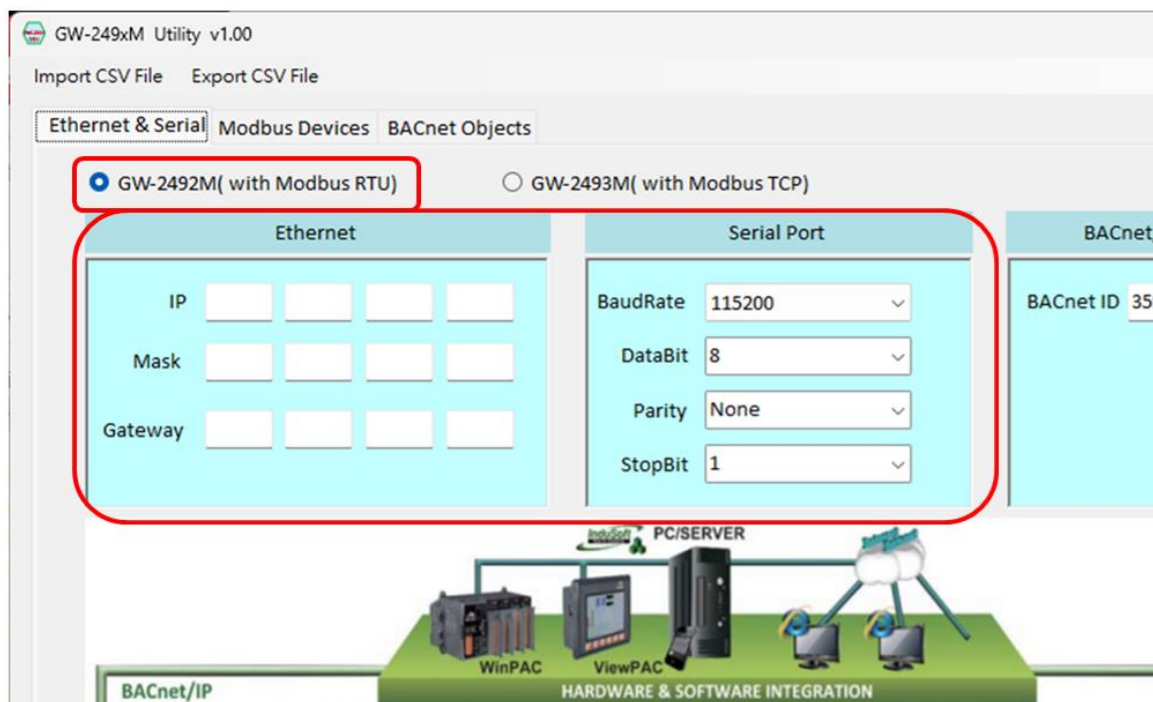


Figure 4.4 The ethernet IP and Serial Port parameters

This utility has a BACnet ID parameter. It means that you can change the BACnet ID value by yourself. Please set it between 0 and 4194302, the default value is 3599.

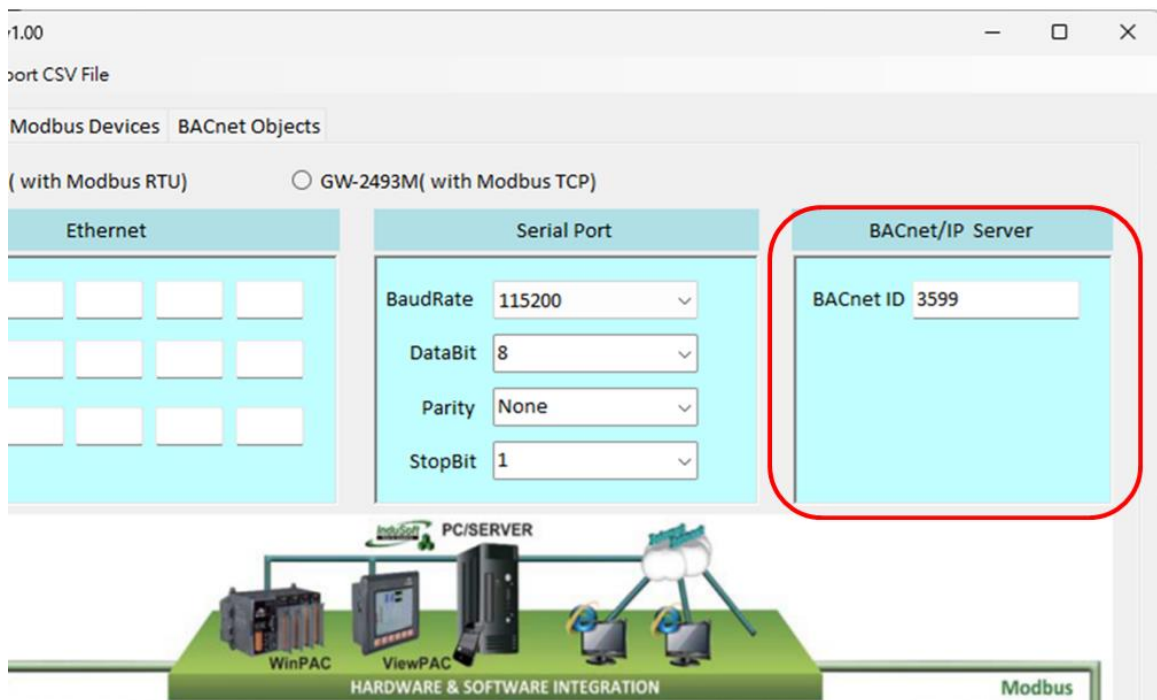


Figure 4.5 BACnet ID Configuration

4.4 Modbus RTU Configuration in the GW-2492M

The GW-2492M acts as a Modbus RTU Master and can access up to 32 Modbus RTU slave devices. Therefore, the **【Modbus Devices】** page of this utility is mainly for editing remote Modbus RTU slave information, as follows.

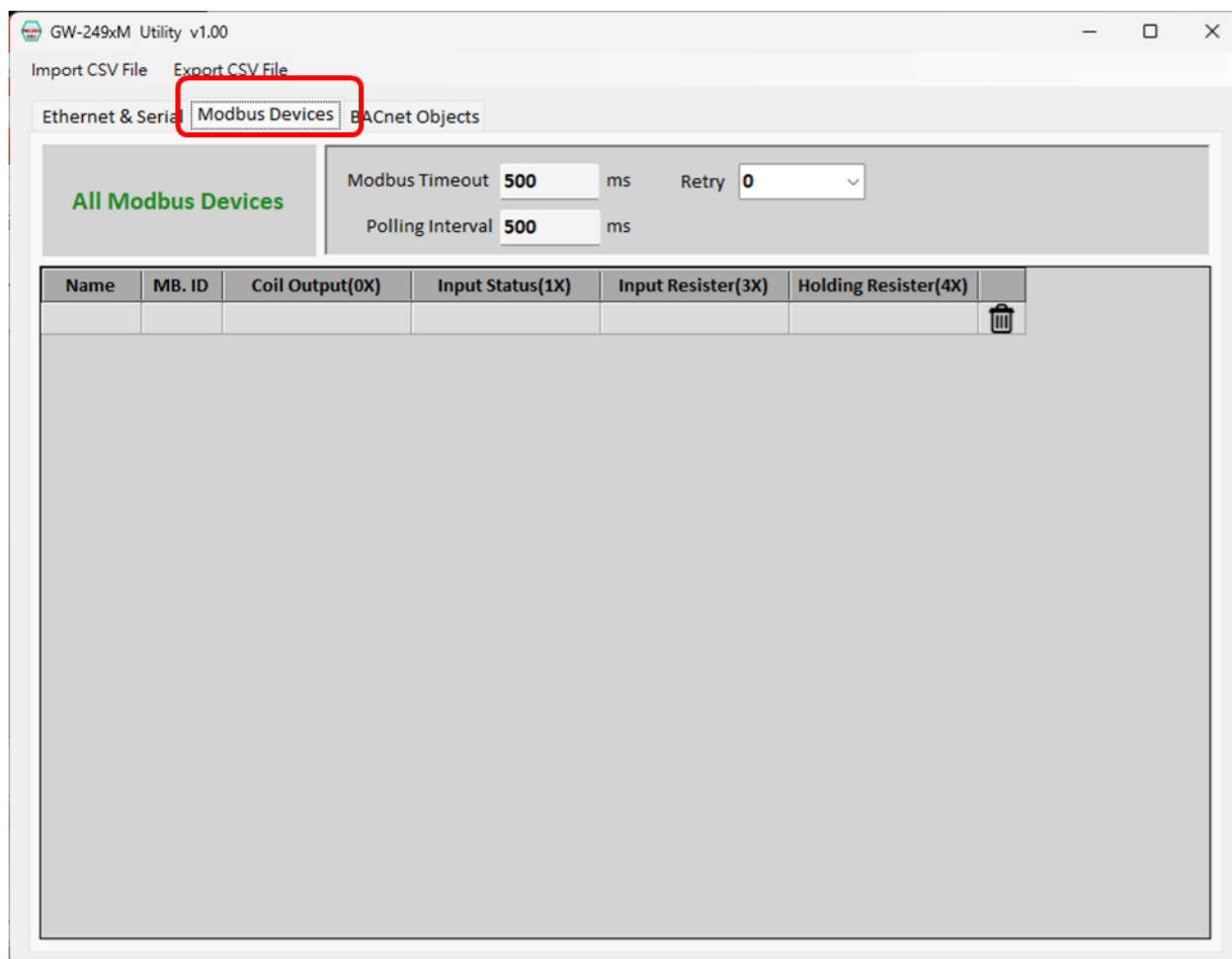


Figure 4.6 the **【Modbus Devices】** page

The GW-2492M module actively polls all Modbus RTU slave devices and uses the same Timeout/PollingInterval/Retry parameters. These parameters will affect the performance of the GW-2492M in collecting Modbus RTU slave information, so please set it according to the actual situation.

- “Modbus Timeout” indicates the maximum time to wait for the slave device to respond. Please set it according to the actual requirement.
- “Polling Interval” indicates the interval time between each poll. The time that can leave the serial network idle. Please set it according to the actual requirement.

- “Retry” indicates the number of times the slave device will be repeatedly queried when it has not responded for more than the timeout period. Please set it according to the actual demand.

When the Modbus Devices table already has some Modbus devices and needs to delete a record, the user can click the small trash can icon on the right side of the record, it will delete the record. If users need to add a Modbus RTU slave device, users can click the blank data row in the table as shown in Figure 4.7 below.

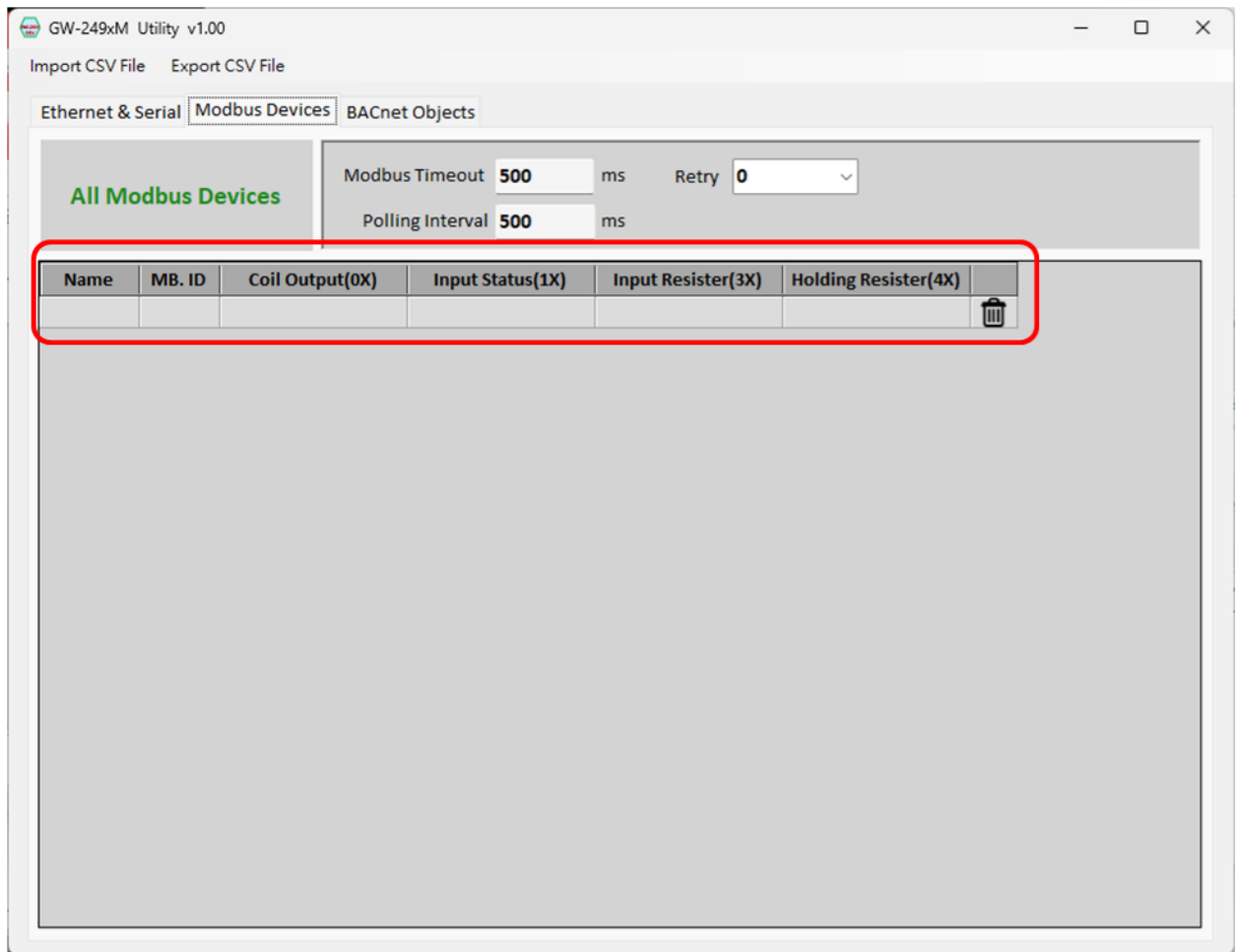
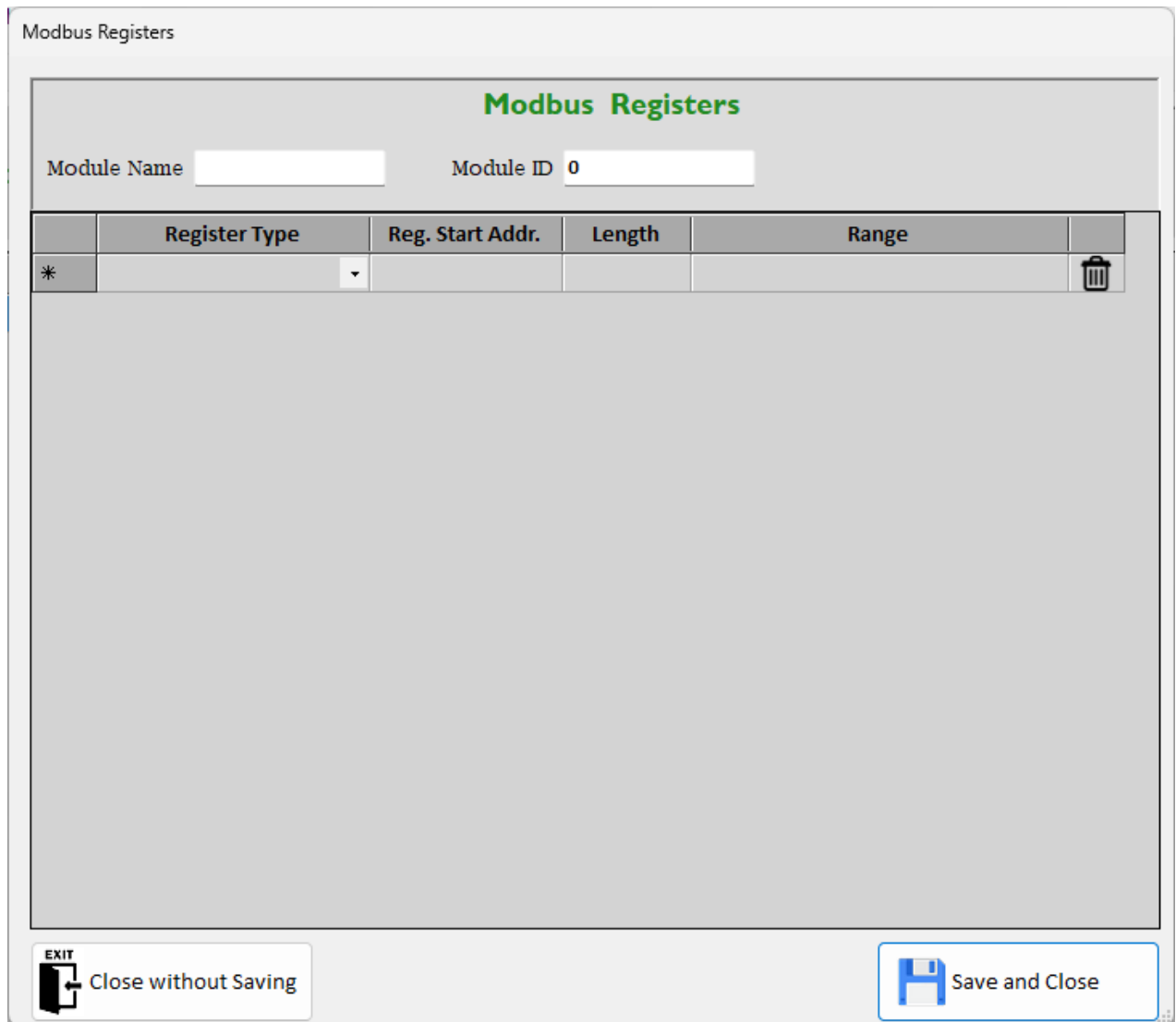


Figure 4.7 Create Modbus RTU slave item

After clicking the blank data row, a dialog will appear, as shown in Figure 4.8 below.



The dialog box is titled "Modbus Registers" in green text. It features two input fields at the top: "Module Name" and "Module ID" (containing the value "0"). Below these is a table with five columns: "Register Type", "Reg. Start Addr.", "Length", "Range", and an empty column with a trash icon. The first row of the table is highlighted with an asterisk in the first column. The main area of the dialog is a large empty space for data entry. At the bottom, there are two buttons: "EXIT Close without Saving" and "Save and Close".


	Register Type	Reg. Start Addr.	Length	Range	
*					

Figure 4.8 Modbus Registers Dialog

When a new Modbus RTU slave device is added, there will be some information that needs to be set, including the device name and ID, etc.

- “Modbus Name” is used to indicate the name of the slave device, which is convenient to identify those slave devices.
- “Module ID” means the Modbus ID of the slave device.

Then users need to add a new Modbus register. Regardless of whether there is any data in the Modbus Registers table or not, when users want to add a new Modbus register, click on the blank data row, as shown in Figure 4.9 below.

Modbus Registers

Module Name Module ID

	Register Type	Reg. Start Addr.	Length	Range	
*					

EXIT Close without Saving

Save and Close

Figure 4.9 Modbus Registers Dialog---Create a register item

The following information is required for the new Modbus registers.

- “Register Type” indicates the Modbus register type. The item supports the following four Modbus register types.
 - 1. Coil Output (0X)
 - 2. Input Status (1X)
 - 3. Holding Register (4X)
 - 4. Input Register (3X)

- “Reg. Start Addr.” means the start address of the Modbus register.
- “Length” indicates the amount of the register.
- “Range” indicates the Modbus register range. This field calculates the range automatically and the user does not need to input it.
- “Trash-CAN icon” When it is necessary to delete a record, you can click on the small trash can icon on the right side of the record, and it will delete the record.

When all Modbus registers have been inputted and you are sure you want to save them, click "Save and Close" button to save the input information and leave this screen. If you don't save them, click "Close without saving" button to ignore any information and leave this screen.

4.5 BACnet Object Configuration

The GW-2492M acts as a BACnet/IP Server, which can accept the request from BACnet/IP Client and be retrieved the data of each object. Therefore, the BACnet Objects page of this utility is mainly for editing BACnet objects as shown below.

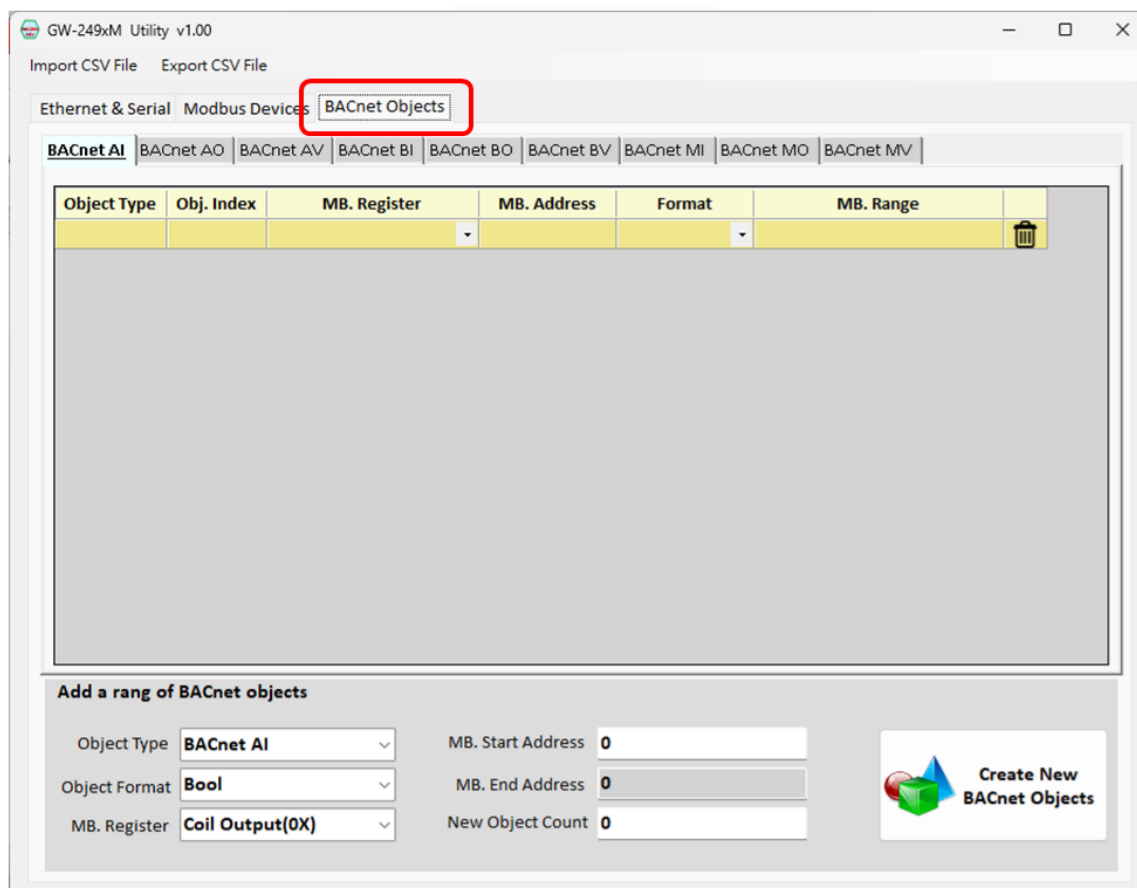


Figure 4.10 BACnet Objects Page

The GW-2492M module supports 9 types of BACnet/IP objects, and you can configure the object's real-time data mapping from which register of the Modbus. When the BACnet Objects table is already partially available and a record needs to be deleted, click on the small trash can icon on the right side of the record and it will delete the record. If the user wants to add a new BACnet Object, the user can click the blank row as shown in Figure 4.11 below.

Below is a description of the fields.

- “Object Type” indicates the type of the BACnet object. This field is automatically generated according to the page of the object, so users do not need to enter it.
- “Obj. Index” indicates the ranking within the object type, which is the running number of

this object. This field will automatically generate consecutive running numbers. The users do not need to enter it.

- “MB. Register” indicates the Modbus register type to which the object corresponds. The following four Modbus register types are supported.
 1. Coil Output (0X)
 2. Input Status (1X)
 3. Holding Register (4X)
 4. Input Register (3X)
- “MB.Address” indicates the start address of the Modbus registers which the object corresponds.
- “Format” indicates the data type of the object and supports the following six data types .
 1. Bool (Boolean)
 2. Uint16 (16-bit unsigned integer)
 3. Int16 (16-bit signed integer)
 4. Uint32 (32-bit unsigned integer)
 5. Int32 (32-bit signed integer)
 6. Float (Single-precision floating point numbers)
- “MB. Range” indicates the range of Modbus registers to which the object corresponds. This field automatically generates a continuous sequence number so that the user does not have to enter it.

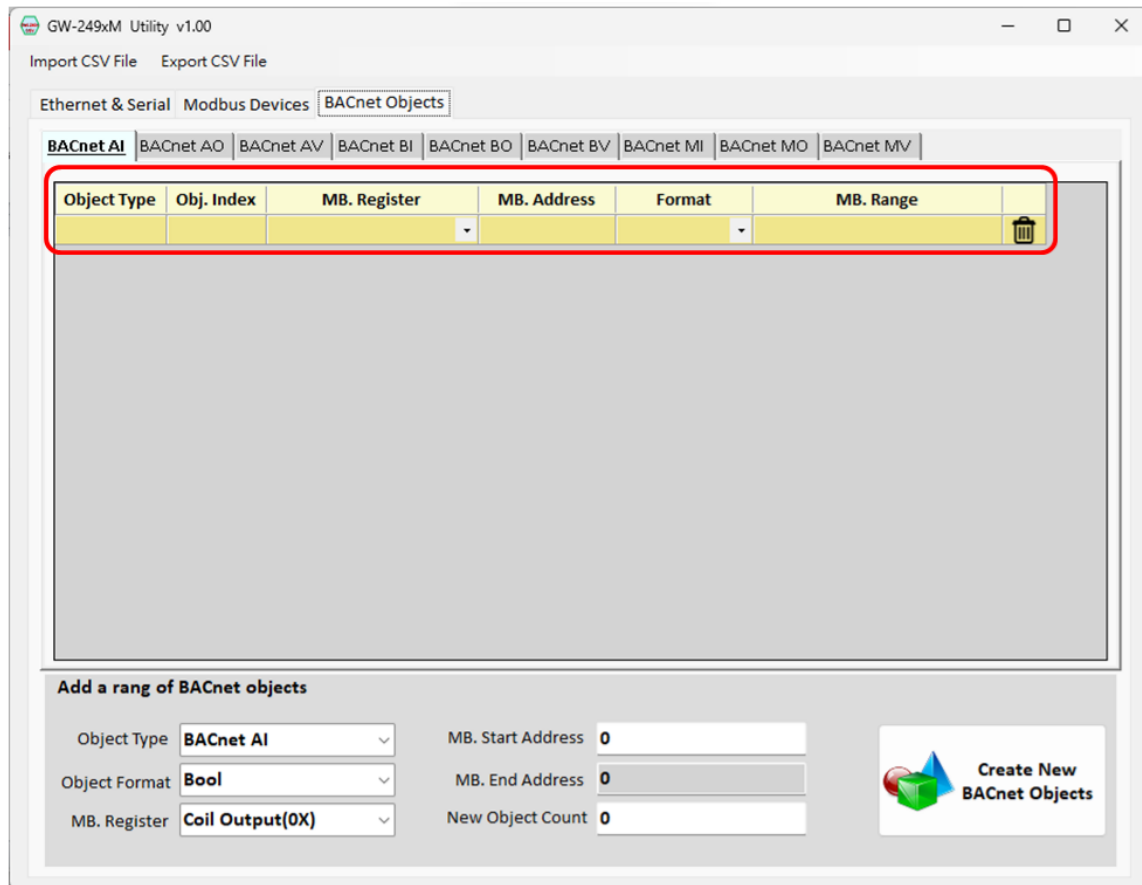


Figure 4.11 BACnet Objects page--- Create a new object

If users need to generate a mass number of consecutive objects, they can use "Add a range of BACnet objects" at the bottom of the page, as shown in Figure 4.12 below.

The following are descriptions of the fields and buttons.

- "Object Type" indicates the type of BACnet objects to be added. Please select the objects you want to produce according to your needs.
- "Format" indicates the data type of the BACnet object. Select the data type according to your requirement.
- "MB. Register" indicates the Modbus register type for the BACnet object. Select the Modbus register type according to your requirement.
- "MB. Start Address" indicates the Modbus register start address for the first BACnet object.
- "MB. End Address" represents the address of the last corresponding Modbus register. This field will be calculated automatically according to the number of objects. Users do not need to enter it.

- “New Object Count” indicates how many BACnet objects are to be generated. Please enter a positive integer.

Once the above fields have been entered, click the "Create New BACnet Objects" button to create a large number of consecutive BACnet objects at once.

GW-249xM Utility v1.00

Import CSV File Export CSV File

Ethernet & Serial Modbus Devices BACnet Objects

BACnet AI BACnet AO BACnet AV BACnet BI BACnet BO BACnet BV BACnet MI BACnet MO BACnet MV

Object Type	Obj. Index	MB. Register	MB. Address	Format	MB. Range	

Add a rang of BACnet objects

Object Type: BACnet AI MB. Start Address: 0

Object Format: Bool MB. End Address: 0

MB. Register: Coil Output(0X) New Object Count: 0

Create New BACnet Objects

Figure 4.12 BACnet Objects page--- Create a mass number of objects