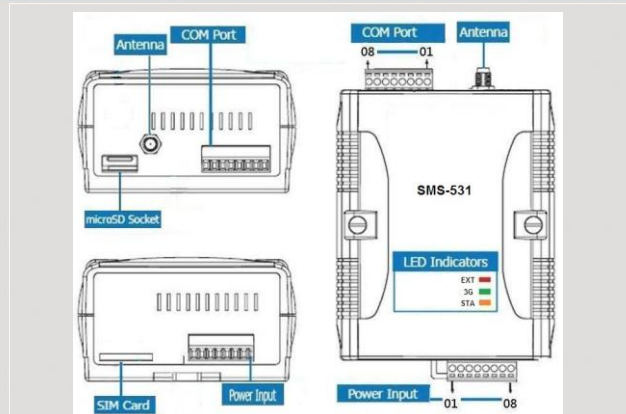




## Intelligent 3G Modbus SMS/Voice Alarm Controller



SMS-531



Dimensions

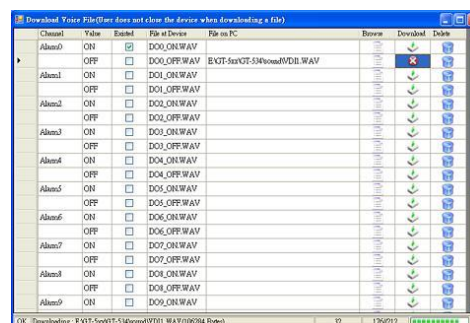
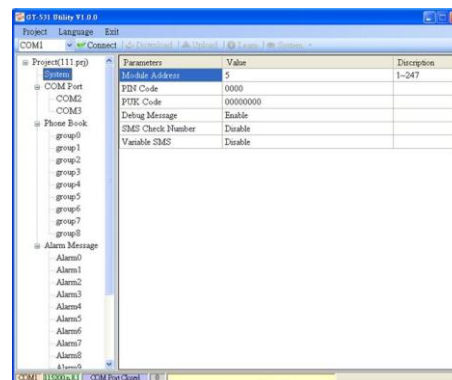
SMS-531 is an intelligent 3G Modbus Gateway for industry M2M applications. It is convenient for users to apply to M2M applications with the host like PC, PLC, HMI and PAC via Modbus RTU communication. It supports UNICODE format for users to send SMS messages to the specific mobile phones by Modbus RTU protocol with various language. That can make the current system to M2M applications. Moreover, the SMS-531 also supports the sound alarm application with the pre-defined voice files. It can be used to inform operator the urgent event immediately. For managing more SMS-5xx series remotely, ICP DAS provides SMS DBS software for users to apply in the system. Therefore, the SMS-531 can be a powerful tool allowing you to use your mobile phone to monitor and control your business from any location.

## Features

- Support Quad-band GSM 850/900/1800/1900 MHz frequency
- Support Quad-band WCDMA 850/900/1900/ 2100 MHz frequency
- Support Modbus RTU slave protocol
- Support max. 256 short messages and voice alarms
- Support max. 70 Unicode Characters
- Easy to setup and configure
- Escalation and reminder function
- Up to 256 mobile phones can be alerted for each alarm point
- These phone numbers can be divided into groups
- Configurable SMS messages
- The content of sending SMS message can be changed by Modbus protocol
- Built-in Watchdog Function
- Industrial Design with Surge Protection
- Support SMS DB of ICP DAS software
- 1 RS-485, 2 RS-232 port
- Support micro SD /SDHC card. (max. 32G bytes)
- Support DC +10 VDC ~ +30 VDC Power Input
- DIN Rail design

## Utility

ICP DAS provide graphic tool for users to configure SMS-531 via RS-232. The utility also can help users to test the SMS-531- in the Lab before they apply in the real site.





## Hardware Specifications

System	
CPU	32 bit Microprocessor
WDT(watchdog)	Yes
Comm. Interface	
COM1	RS-232 : TXD, RXD, GND : Configuration and Debug
COM2	RS-232 : TXD, RXD, GND : Communicating with the Host
COM3	RS-485 : D+, D- : Communicating with the Host
3G System	
Frequency Band	WCDMA Quad-Band 850/900/1900/2100 MHz
GSM System	
Frequency Band	Quad-Band 850/900/1800/1900 MHz
Coding Schemes	CS 1, CS 2, CS 3, CS 4
SMS	PDU mode
SMS Format	Sending : UCS2 Receiving : UCS2/7bits
Power	
Protection	Reverse polarity protection
Frame Ground Protection	ESD, Surge, EFT, Hi-Pot
Required Supply Voltage	+10 VDC ~ +30 VDC
Mechanical	
Casing	Plastic
Dimensions(W x H x D)	91 mm x 132 mm x 52 mm
Installation	DIN-Rail
Environment	
Operation Temp.	-25°C to 75°C
Storage Temp.	-40°C to 80°C
Humidity	5~95% non-condensing

## Applications



## Ordering Information

<b>SMS-531 CR</b>	Intelligent 3G Modbus SMS/Voice Alarm Controller (RoHS)
-------------------	---