

Packing List

In addition to this guide, the package includes the following items:

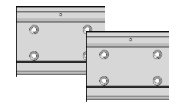


WP-9000-CE7

- WP-9221-CE7
- WP-9421-CE7
- WP-9821-CE7



RJ-45 Waterproof Assembly



**60 mm DIN-Rail Clip * 2
and M3 x 6L Screw * 8**



microSD Card and microSD to SD Adapter

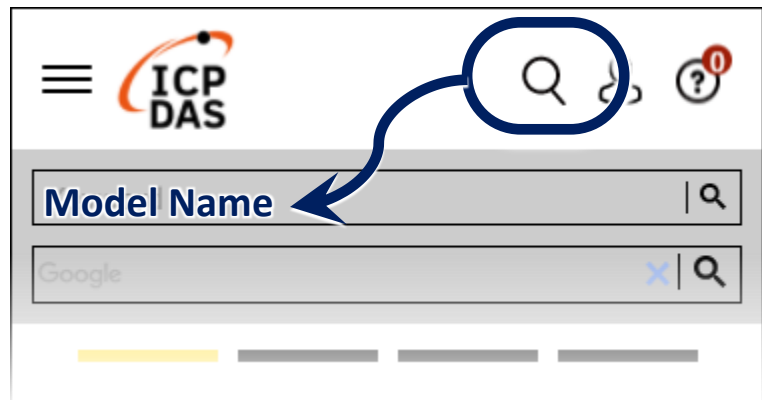


Screw Driver

Resources

How to search for drivers, manuals and spec information on ICP DAS website.

- For Mobile Web

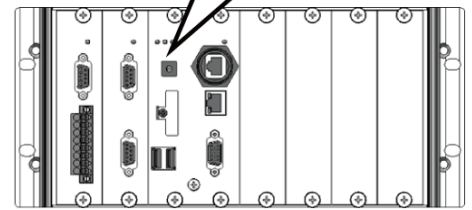
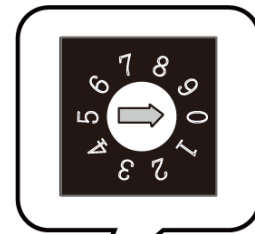


- For Desktop Web

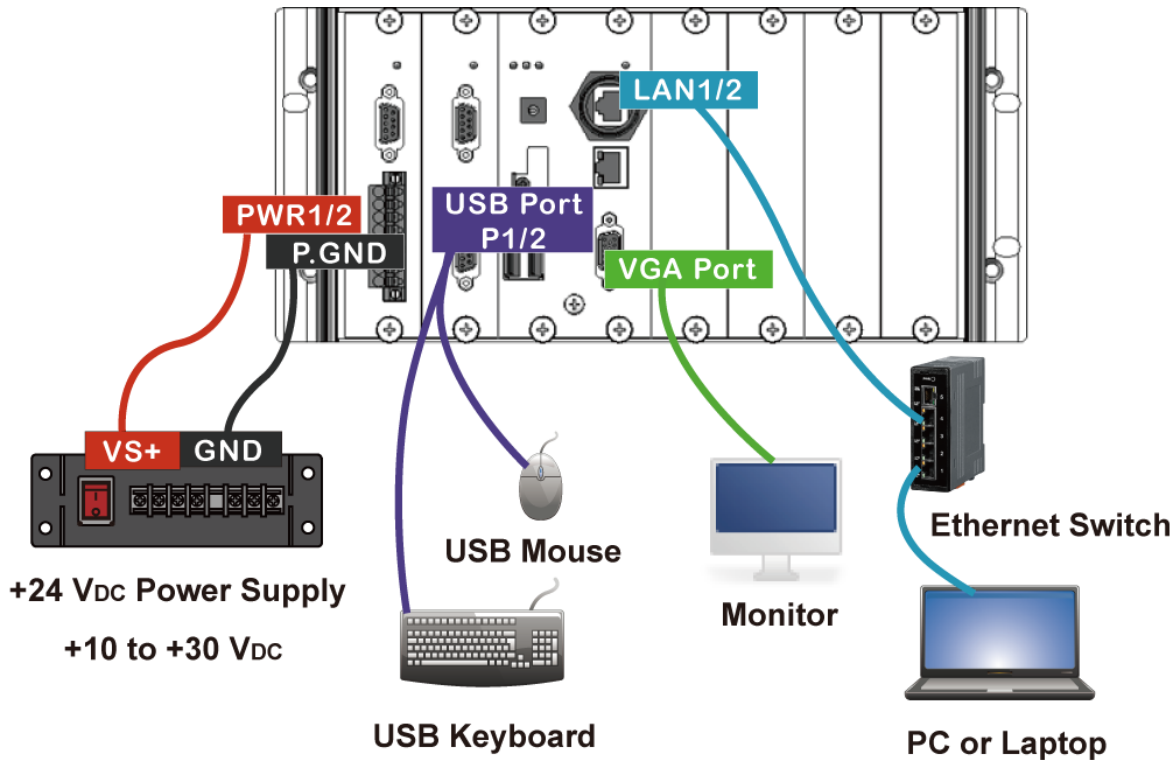


1 Configuring the Boot Mode

Before starting any installation, be sure that the switch is placed in the '0' position.

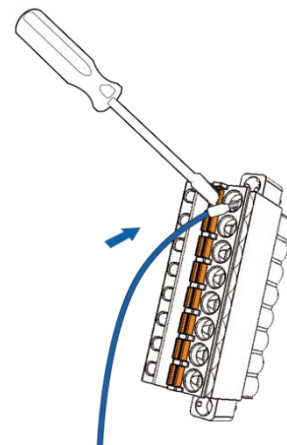
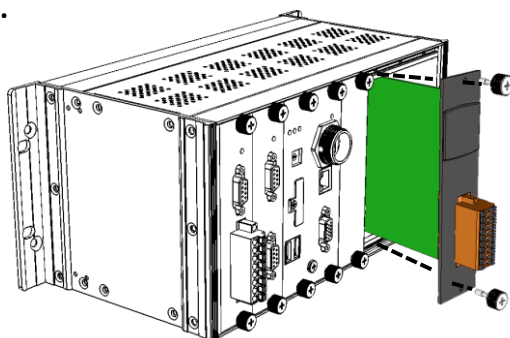


2 Connecting to PC, Monitor and Power Supply



3 Inserting the I/O Module and Wiring Connection

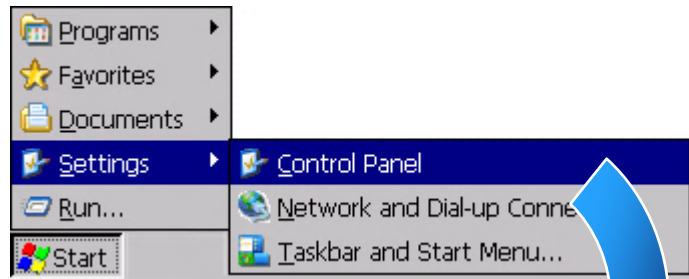
WP-9000-CE7 has 2/4/8 I/O expansion slots and only supports I-9K and I-97K series I/O modules.



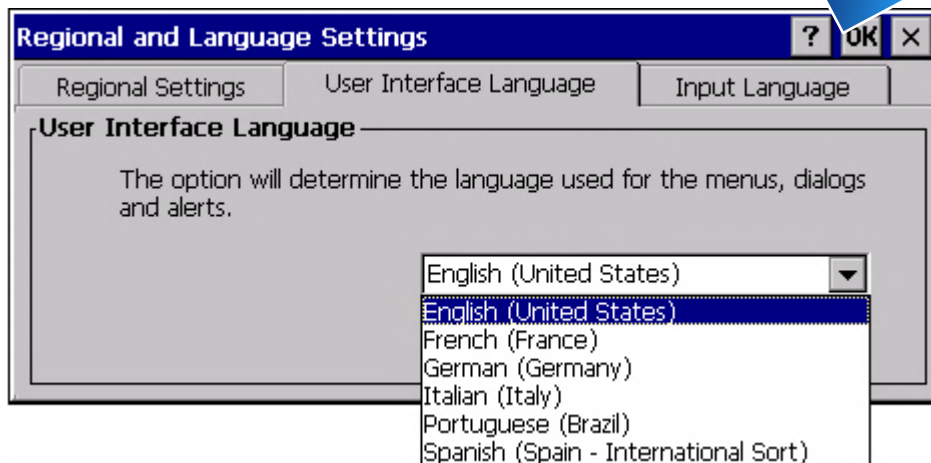
- i. Push the orange clip in, and keep on push
- ii. Insert the wiring

4 Changing the User Interface Language

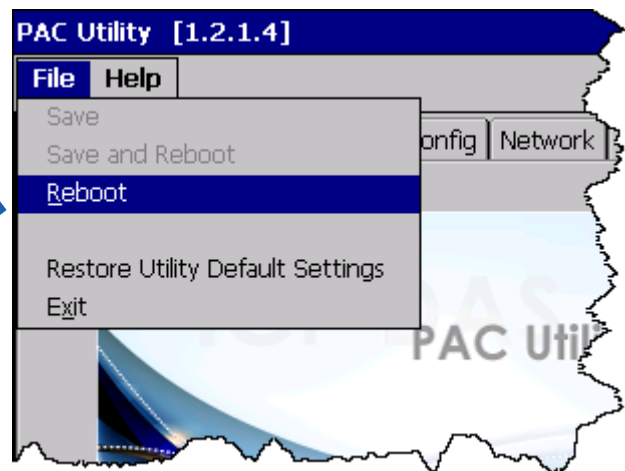
- 1) Click Start menu, point to Settings, click Control Panel, and then click Regional Settings



- 2) Click User Interface Language tab, choose your local language, and then click OK button



- 3) Double-click the PAC Utility on the desktop, and then reboot the WP-9000-CE7 for changes to take effect



5 Using PAC Utility to Manage the WP-9000-CE7

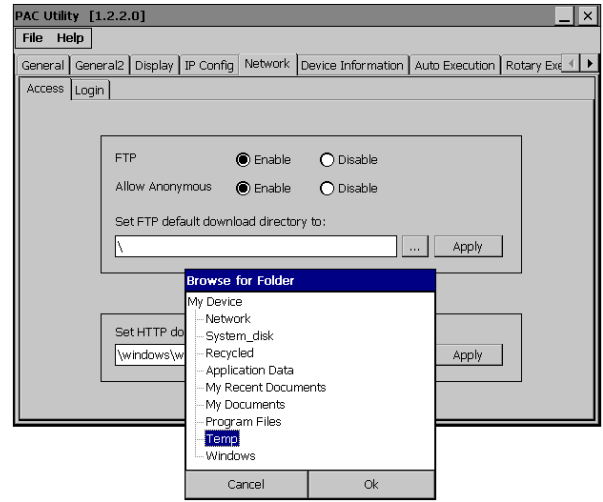
- 1) Double-click the PAC Utility on the desktop



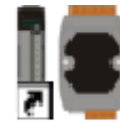
2) Configure IP address (DHCP), FTP Server, Auto Execution files..., etc

3) Reboot the WP-9000-CE7

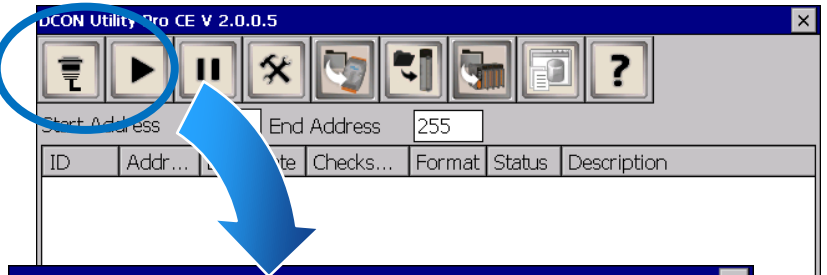
6 Using DCON Utility Pro to Configure the I/O Module



1) Double-click the DCON_Utility_Pro on the desktop



2) Click the  button



3) Configure the communication settings

4) Click the  button

5) Click the module name to configure the I/O module

