



HA-401

Security Situation Control Intercom Host

Features

- Full-duplex voice and video intercom
- Support for SIP communications architecture
- 10.1" WXGA color TFT-LCD touch screen
- Full HD Front-facing camera (1080p)
- Display for the date, time, temperature, humidity, PM2.5, and noise levels
- Intelligent home control for lighting, air conditioning, TV, and electronic curtains, etc.
- Energy monitoring and management capabilities
- Community announcements and push advertising features
- Interactive M2M transmission technology: MQTT



Introduction

HA-401 is an intercom host that supports security situation control, integrating functions related to message notifications, security alarms, community bulletins, interior environment control, visitor intercom, and push advertising. The HA-401 uses advanced automatic control, database software, computer network communication technology, and building message management, combined with a Smart Home system, to achieve intelligent indoor control.

The HA-401 provides support for a number of standard communication protocols, such as the Modbus RTU/ASCII and Modbus TCP protocols. When used in conjunction with 3rd-party software such as SCADA, or ERP, etc., the HA-401 is able to provide support for a range of smart phones. The phone can then be used to integrate with local or remote software to provide control functions for home lighting, air conditioning, television, electronic curtains, noise, and security alerts, delivering a more stylish and comfortable smart home experience based on science and technology.

Video Conversation



Environmental Monitoring



Security Alarm



Information Notice

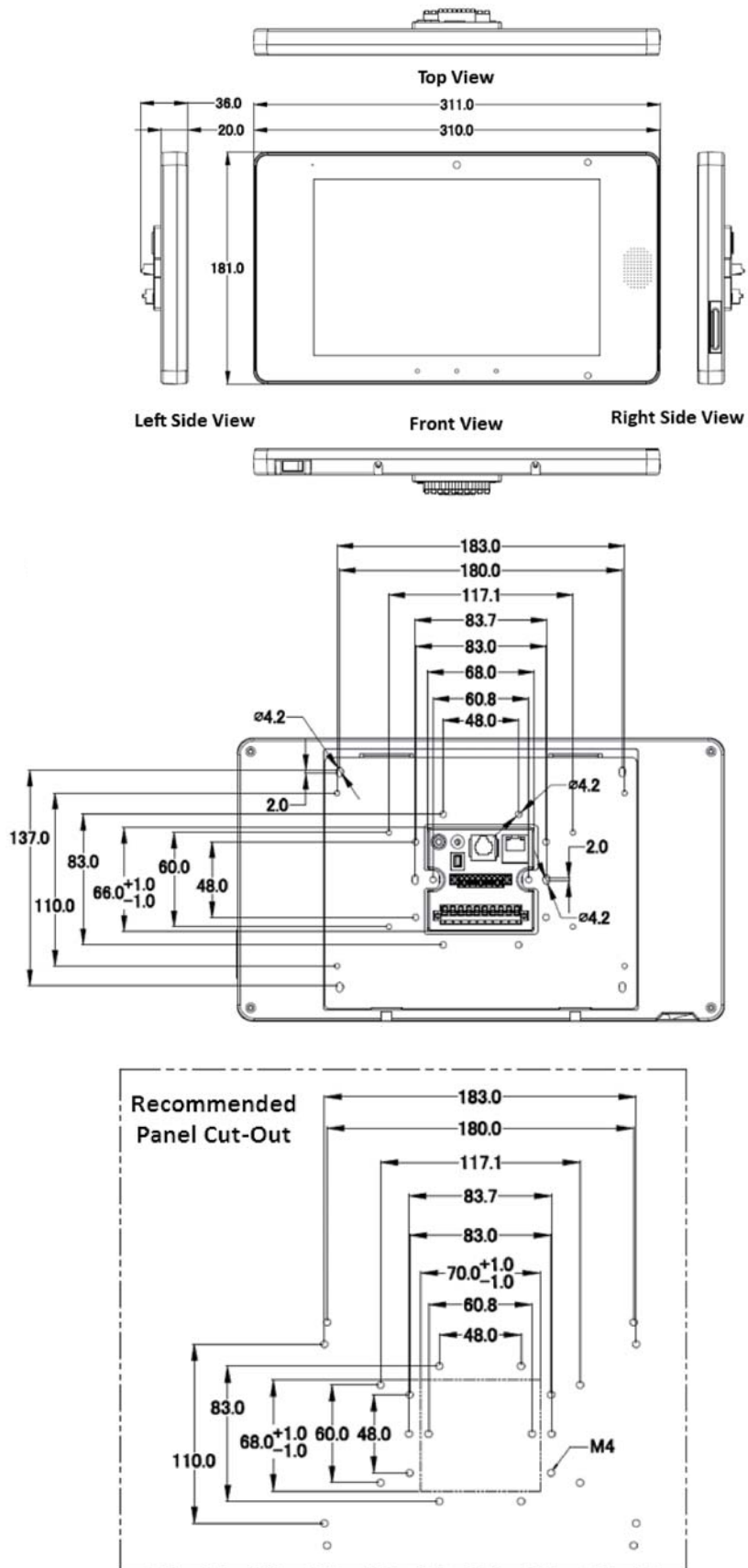


Specifications

Controller	
CPU	32-bit, 1000 MHz
DDR3 SDRAM	512 MB
NAND Flash	4 Gb
EEPROM	128 KB; Data Retention: 40 years; 1,000,000 erase/write cycles
RTC	Provide second, minute, hour, date, day of week, month, year
Communication Interface	
Ethernet	RJ-45 x 1, 10/100 Base-T (Auto-negotiating, Auto MDI/MDI-X, LED indicators)
USB 1.1	1 (Client/Mini-USB)
COM Port	COM1: RS-485 x1 (TB and RJ-11) COM2: RS-232/485 x1 (TB)
Digital Input	
Channels	2
Input Type	Dry contact (Source)
Dry Contact Level	Off Voltage Level: Open On Voltage Level: Close to GND
Relay Output	
Channels	2
Output Type	1 Form A 1 Form C
Contact Capacity	5 A @ 250 VAC; 5 A @ 30 VDC 0.6 A @ 125 VAC; 2 A @ 30 VDC
Endurance	Mechanical: 2 x 10 ⁷ ops. Mechanical: 1 x 10 ⁸ ops. Electrical: 1 x 10 ⁵ ops. Electrical: 5 x 10 ⁵ ops.

HMI	
LCD	10.1" TFT (Resolution 1280 x 800)
Backlight Life	20,000 hours
Brightness	350 cd/m ²
Camera	1080P (1920 x 1080), CMOS Sensor
Touch Screen	5-wire, analog resistive; Light Transmission: 80%
Audio	AMP 2.5 W; Digital microphone
Power Supply	
Input Range	12 V ~ 48 VDC
Consumption	4.0W
Protection	Reverse Polarity Protection
Powered from PoE	Yes
Mechanical	
Installation	Wall Mounting (Suitable for the European 86 mm x 86 mm outlet box)
Dimensions	311 mm x 36 mm x 181 mm (W x L x H)
Environment	
Operating Temperature	-10°C ~ +60°C
Storage Temperature	-20°C ~ +70°C
Humidity	10% ~ 90% RH, non-condensing

■ Dimensions (Units: mm)



■ Ordering Information

HA-401 CR	Security Situation Control Intercom Host (RoHS)
------------------	---