

分類/Classification	<input type="checkbox"/> tDS	<input type="checkbox"/> tGW	<input type="checkbox"/> PETL/tET/tPET	<input type="checkbox"/> DS/PDS/PPDS	<input type="checkbox"/> tM-752N
	<input type="checkbox"/> I/O Card	<input type="checkbox"/> VXC Card	<input checked="" type="checkbox"/> VxComm	<input type="checkbox"/> Other	
作者/Author	Tammy	日期/Date	2014-08-01	編號/NO.	FAQ-035

Q: Ensuring that the Modscan32 program functions correctly when using a Virtual COM port?

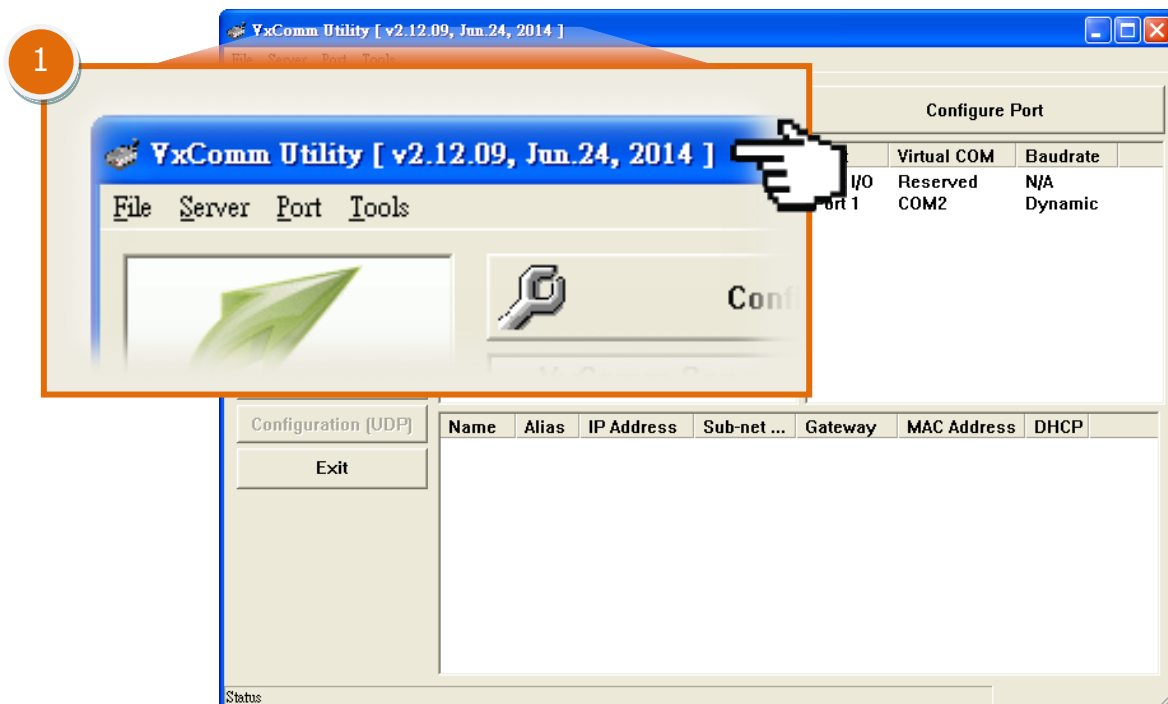
A: When attempting to use the ModScan32 program to test or access a slave RTU device via a Virtual COM port, a communication timeout error may occur. This is because the ModScan32 program is purging (clearing) data too quickly after sending data, so the device server (e.g., tDS-718, PDS, or 7188EN etc.) cannot finish sending from the serial port and so the slave device is unable to receive a full request packet. Consequently, no response will be received from the slave device and a timeout will occur. To resolve this problem, the purge command for the Virtual COM port must be disabled.

To resolve this issue, follow the procedure described below:

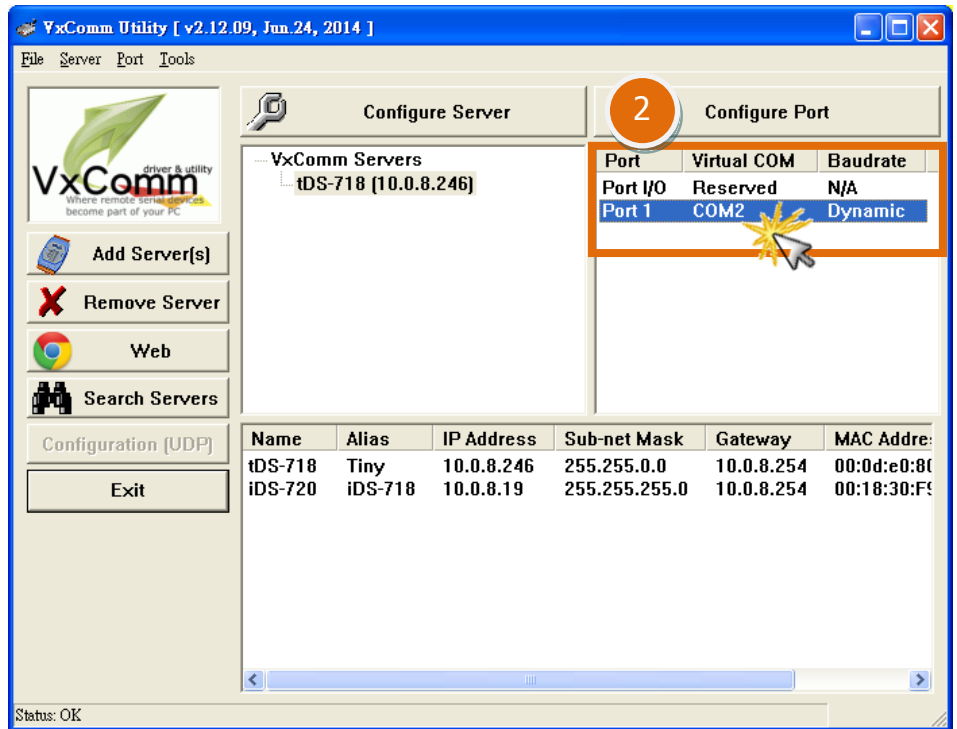
Step 1: Check that the version number of VxComm Utility is [V2.12.02, May.24, 2013] or later.

If the version number is earlier than this, install the latest version of the VxComm Utility, which can be downloaded from the ICP DAS web site at:

http://ftp.icpdas.com/pub/cd/8000cd/napdos/driver/vxcomm_driver/2k/



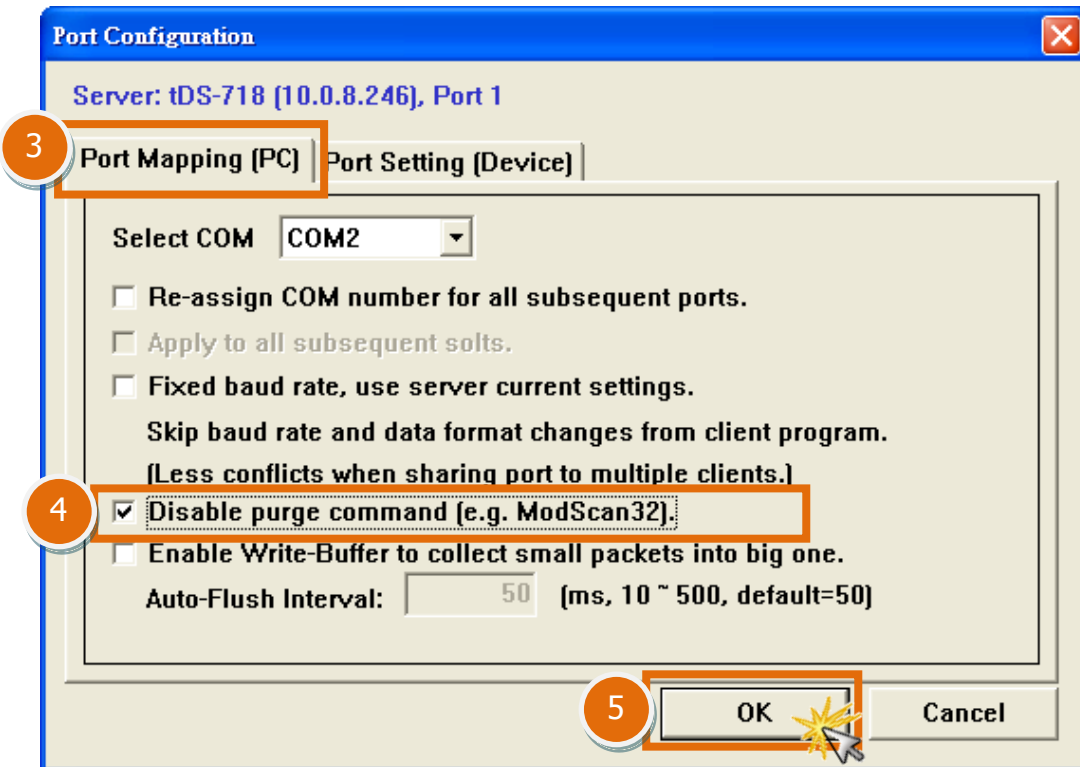
Step 2: Double-click the **Virtual COM port** of your device (e.g. the tDS-718 module) in the right-hand pane of the VxComm Utility.



Step 3: In the **Port Configuration** dialog box, click the **“Port Mapping [PC]”** tab.

Step 4: Check the **“Disable purge command [e.g. ModScan32]”** option.

Step 5: Click the **“OK”** button to complete the configuration.



Step 6: Ensure that all Virtual COM ports have been closed and then click the “**R**estart Driver” item from the “**T**ools” menu. Click the “**R**estart Driver” button in the warning dialog box to restart the driver and complete the configuration process.

