

# Using Secure Viewer as Alternative to Web Browser

V1.01

In some situations, you may not want to have a full-featured Web browser installed and running on a plant floor station. You can install the InduSoft Secure Viewer (**Viewer.exe**) as an alternative to the browser. This program provides the same functionality as a Web Thin Client without the unwanted features of a full browser. When you start the Secure Viewer, it immediately connects to the specified Web and Data Servers and loads the IWS application. No user direction is required.

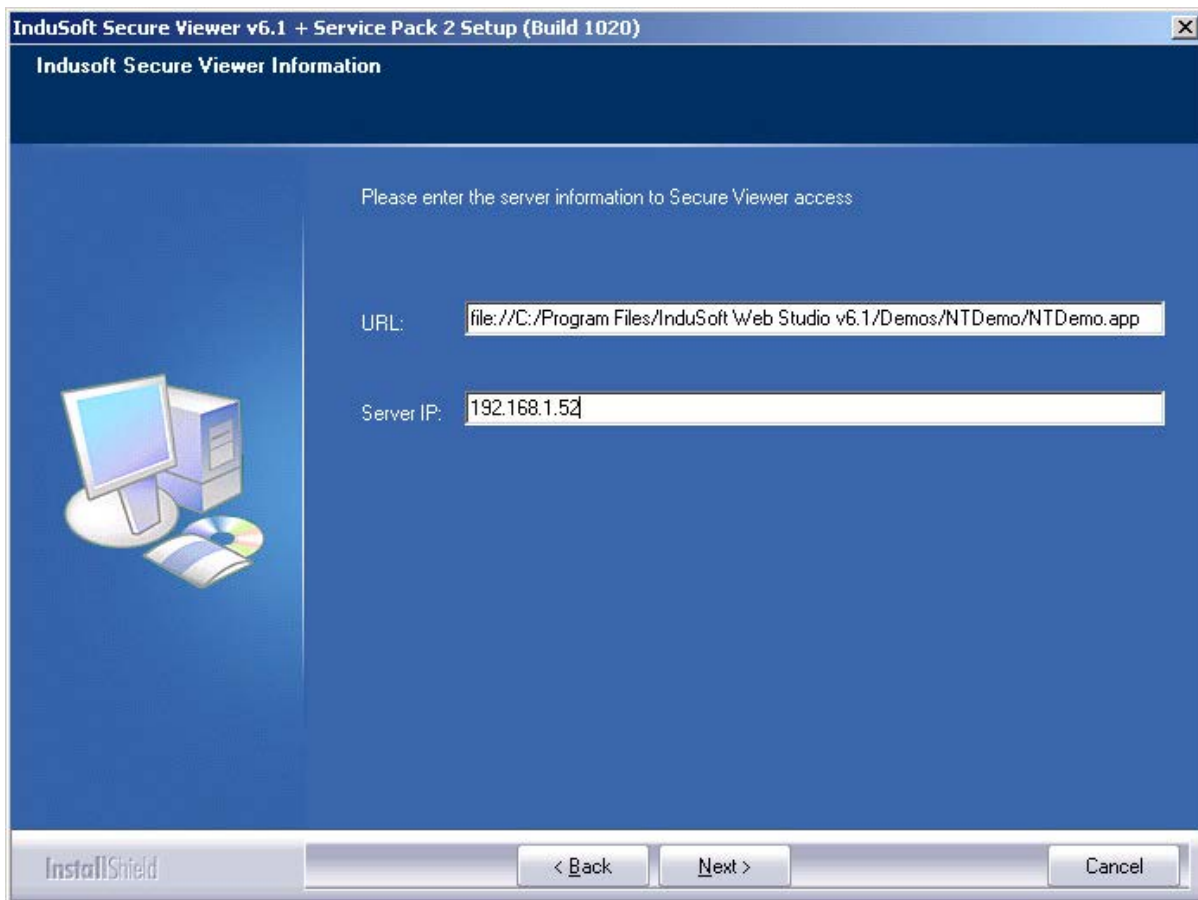
## Installing The Secure Viewer on a Windows PC

To install the Secure Viewer on a Windows 2000/XP/Vista/7 computer:

- Request the Secure Viewer (Thin Client) installer from the web page list below, save it to the designated computer, and start it.

[http://www.icpdas.com/products/Software/InduSoft/Download\\_PC.htm](http://www.icpdas.com/products/Software/InduSoft/Download_PC.htm)

- Follow the instruction of the installation wizard. There are only two settings that must be configured during installation.



- **URL:** Enter the URL or filepath of the application file (\*.app) on the Web Server.  
Ex1: <file:///C:/Program Files/InduSoft Web Studio 6.1/Demos/NTDemo/NTDemo.app>  
Ex2: <http://192.168.1.52/NTDemo.app>

**Note:** If used IP address to configure the URL column, please make sure that the \*.app file can be accessed when configure the Web Server. For example, for users who use NTWebServer.exe as web server, the NTWebServer.exe should be executed in project folder (ex: C:\InduSoft\_Project) instead of web folder (ex: C:\InduSoft\_Project\Web).

➤ **Server IP:** Enter the IP address or hostname of the TCP/IP Server

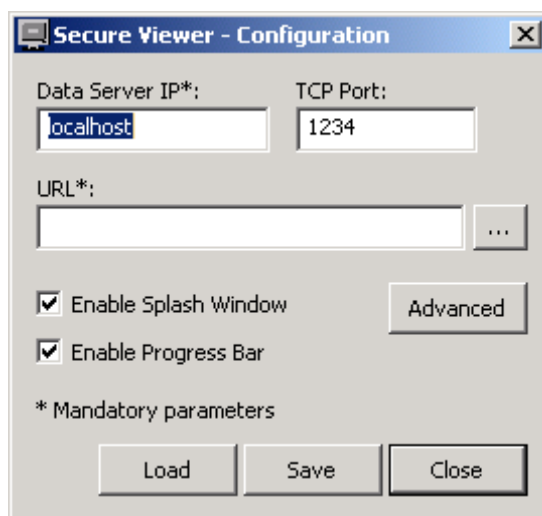
■ Finish the installation and click Finish to close the installer.

The installation wizard automatically installs and registers the Web Thin Client ActiveX component (ISSymbol.ocx), so if you have correctly configured the URL and Server IP settings, then the Secure Viewer should be ready to go.

## Changing the Secure Viewer Configuration

The configuration of the Secure Viewer is saved in the **viewer.ini** file, which should be in the same directory (Ex: C:\Program Files\InduSoft Secure Viewer v6.1\ ) as **Viewer.exe**.

To change the configuration of the Secure Viewer after it has been installed, you can run the Viewer configuration utility (**ViewerCfg.exe**) that was also installed at the same directory as Viewer.exe.



The configuration utility provides the following options:

- **Load** button: Click to load a viewer.ini file into the utility for editing.
- **Save** button: Click to save your changes to the viewer.ini file.
- **Data Server IP** field: Enter the IP address (or host name) of your data server station. The data server station is the computer or device where the TCP/IP Server module is running.
- **TCP Port** field: Enter the port number of the data server, if it is different than the default port of 1234.
- **URL** field: Enter the URL or filepath of the application file (\*.app) on the Web Server.
- **Enable Splash Window** option: Check (enable) this option to see a splash window when you start the Secure Viewer.
- **Enable Progress Bar** option: Check (enable) this option to see a progress bar while the Secure Viewer loads the application file.

- **Advanced** button: Click to access additional configuration options:

The screenshot shows a dialog box titled "Advanced" with a close button in the top right corner. The dialog contains the following fields and options:

- Secondary Data Server IP:** A text input field.
- Web Tunneling Gateway:** A section containing:
  - TCP Port:** A radio button (selected) next to a text box containing "80".
  - SSL Port:** A radio button next to a text box containing "443".
  - IP Address:** A text input field.
  - Secondary IP Address:** A text input field.
- Log on as Guest:** A checkbox.
- Buttons:** "OK" and "Cancel" buttons at the bottom right.

- **Secondary Data Server IP** field: Type the IP address (or host name) of the secondary data server station. If the primary data server fails, the Secure Viewer will attempt to connect to the secondary data server automatically.
- **Web Tunneling Gateway:** If you have configured a Web Tunneling Gateway to bridge your intranet to the Internet (see “Architecture 4: Web server and Web Thin Clients in different networks” on page 13–8), then enter the address(es) for the gateway here.
- **Log on as Guest** option: Check (enable) to have the Secure Viewer automatically log on as Guest, eliminating the need to enter a Username or Password.