
h °-5007/5107/5207/5307/5507

aPAC5x07

ISaGRAF

PAC5x07

IEC 61133 ISaGRAF

ISaGRAF PAC :

PAC PAC7186EG PAC7186PEG-7188EG,-7188XG,
PAC5007/5107/5207/5307
iPAC: iP-8447, iB847,-B4370, B8370, B417,-8817,
WinPAC: WP-8147, WB847, WB847 (WinCon:-8347, W8747)
ViewPAC: VP-25W7, VP-23W7, VP-2117
XPAC: XP-8047CE6, XB37-CE6XP-8747CE6

&

:

email service@icpdas.com

www.icpdas.com

www.icpdas.comFAQ>Software ISaGRAF

: Chun Tsai, Spike Huang, Spike Hong, R&D dept.ICP DAS.

2010

	h °5007/5107/5207/5307/5507.....	1
	2
	4
ISaGRAF	5
1	5x07(D).....	6
	1-1
1.1	h °5007/5107/5207/5307/5507.....	1-1
1.2	I/O	1-1
1.3	1-2
1.4	1-2
1.5	1-3
1.6	I/O Modbus	1-3
1.7	(Ethernet RS485).....	1-4
1.8	Email.....	1-4
1.9	SMS	1-5
1.10	CAN / CANopen	1-5
1.11	Modbus Master Modbus	1-6
1.12	GPS : ISaGRAF PAC I-87211W GPS721.....	1-7
1.13	ZigBee	1-8
2	2-1
2.1	1 ISaGRAF.....	2-1
	2.1.1: :	2-2
	2.1.2: Window 2000 :	2-3
	2.1.3: Windows NT :	2-3
	2.1.4: Windows Vista/Windows 7 (32) :	2-4
	2.1.5: Windows 7-64 :	2-5
	2.1.6: (Variable Arrays) :	2-6
2.2	2 @ # h `) ° o ` y7.....@.o.....8.k	2-7
3	&	3-1
3.1	PC COM1.....	3-1
3.2	PC COM2.....	3-2
3.3	PC	3-3

3.4	(Driver).....	3-5
3.5	(NET-ID).....	3-8
3.6	COM1 (Baud Rate).....	3-9
3.7	PAC5x07 COM1 Modbus Slave	3-10
3.8	COM2 COM3 Modbus RTU Slave	3-12
3.9	h °5#07 IP & Mask & Gateway.....	3-14
3.10	ISaGRAF	3-16
3.11	DCON Utility I-7000 I-87K I/O	3-17
3.12	I-7000 I-87K I/O	3-21
3.13	Modbus Master/Slave	3-22
3.14	HMI	3-23
3.15	ISaGRAF	3-24
3.16	h °5#07	3-25
4	ISaGRAF	4-1
4.1	ISaGRAF	4-1
4.1.1:	@o 8tk ° 7 U.....	4-2
4.1.2:	ISaGRAF	4-2
4.1.3:	ISaGRAF	4-3
4.1.4:	ISaGRAF	4-4
4.1.5:	LD	4-8
4.1.6:	"LD1"	4-9
4.1.7:	I/O.....	4-12
4.2	4-15
4.2.1:	LD	4-15
4.2.2:	LD	4-16
4.2.3:	4-17
4.3	4-20
	1
A.	ISaGRAF & &	1
A.1	ISaGRAF	1
A.2	PC VB , Modbus TCP/IP ISaGRAF ?.....	2
B.	3
B.1	I-7018Z.....	3
B.2	I-87018Z.....	3
C.	XW-107 (I/O).....	4

ISaGRAF User's Manual():

CDROM: \napdos\isagraf8000\english_man\user_manual_i_8xx7.pdf"
"user_manual_i_8xx7_appendix.pdf"
http://www.icpdas.com/products/8000/getting_started_manual.htm

ISaGRAF ():

CDROM: \napdos\isagraf8000\chinese_man\chinese_user_manual_i_8xx7.pdf"
"chinese_user_manual_i_8xx7_appendix.pdf"
http://www.icpdas.com/products/8000/getting_started_manual.htm

:

aPAC5x07: CD\NAPDOS\apac5000\document
<ftp://ftp.icpdas.com/pub/cd/8000cd/napdpac5000/document/>

ISaGRAF :

ISaGRAF IO libraries, Drivers, Demo
<http://www.icpdas.com/products/8000/isagraf.htm>

: NS-205 / NS-208/ NS205PSE

<http://www.icpdas.com/products/Switch/switch.c.htm>



Model: NS-205



Model: NS-208



Model: NS-205PSE

: NS205PSE PoE Switch

FAQ:

FAQ www.icpdas.com/faq/isagraf.htm

ISaGRAF

ISaGRAF

1. www.icpdas.com/home.htm

2. ISaGRAF

3.

4. ()

: PAC-5x07(D)

		D 5 75007(D)	D 5 75107(D)	D 5 75207(D)	D 5 75307(D)	D 5 75507(D)
		MiniOS7 (DOS -like)				
ISaGRAF	ISaGRAF Ver . 3	IEC 61131 -3				
		LD, ST, FBD, SFC, IL, FC				
		64 KB				
		: 2 ~ 25 ms : 10 ~ 125 ms ()				
CPU						
(CPU)	80186, 80 MHz					
SRAM	768 KB					
Flash	512 KB					
microSD	(ISaGRAF)					
SRAM	512 KB; 5 .()					
EEPROM	16 KB					
NVRAM	31 bytes (, 10 .)					
(RTC)	/ ,					
64-bit	,					
	(0.8)					
Ethernet						
	RJ-45 x 1, 10/1 00 Base -TX (Auto -negotiating, Auto MDI/MDI -X, LED indicators)					
COM 1	RS -232 (TxD, RxD, RTS, CTS, GND), , : 115200 bps					
COM 2	RS -485 (Data+, Data -) "Self Tuner" , , : 115200 bps					
LED						
LED	2					
LED	LED (D)					
I/O						
	, 1 XW -board I/O .					
(W x H x D)						
	91 mm x 123 mm x 52 mm					
	(DIN -Rail)					

	D 5 75007(D)	D 5 75107(D)	D 5 75207(D)	D 5 75307(D)	D 5 75507(D)
	-25 ~ +75°C				
	-30 ~ +80°C				
	10 ~ 90% RH ()				
	+12 ~ +48 V _{DC}				
	-				
	(ESD)				
	2 W; (D) 2.5 W				
	-	GPS	2G (GPRS)	3G (WCDMA)	Wi-Fi
; D G . . D5507(D)					
	32 (all -in-view tracking)				
	-159 dBm				
	: 42 sec.; : 35 sec.; : 0.1 sec.				
	: 25 m CEP (S/A off); : 0.1 sec. (S/A off); : ± 1 ms				
	NMEA				
& ; . fl ; D F G t . -5207(B)7					
	850/900/1800/1900 MHz				
GPRS Multi -slot	Class 10/8				
GPRS Mobile Station	Class B				
GPRS Class 10	85.6 kbps				
CSD	14.4 kbps				
GSM phase 2/2+	Class 4 (2 W @ 850/900 MHz); Class 1 (1 W @ 1800/1900 MHz)				
Coding Schemes	CS 1, CS 2, CS 3, CS 4				
SMS	PDU				

' ; ' fl K 7 8 A 5 L . -5307(D)	
	UMTS : 2100/1900/850 MHz
	UMTS / HSDPA / HSUPA : 5.76 Mbps; : 7.2 Mbps
Wi - :] ' fl , \$ & " % % ' V # - 5307(D) D 5 7	
	IEEE 802.11 b/g
	2.412 GHz ~ 2.484 GHz
	13
	WEP -64/ WEP -128/WPA -TKIP/WPA -AES
	-87 dBm (IEEE 802.11b) / -72 dBm (IEEE 802.11g)
	12 dBm (IEEE 802.11b) / 14 dBm (IEEE 802.11g)
()	
(Net ID)	1 ~ 255,
Modbus RTU/ASCII Master	2 : COM1, COM2 COM3 (*) . (Modbus) 128 Modbus_XXX
Modbus RTU Slave	2 : COM1 (COM2, COM3) (*) . (ISaGRAF, PC/ / OPC Server)
Modbus TCP/IP Slave	6 , Ethernet Modbus TCP/IP Slave ISaGRAF PC/
	COM1, COM2 COM3 ~ COM8 (*) .
I/O	COM2 COM3:RS -485 (*) 1 I-7000 I/O I-87K I/O (I-87Kn + I-87K I/O RU -87P1/2/4/8 + I-87K I/O) I/O 64 I/O
Fbus	COM2, ICP DAS ISaGRAF
Ebus	ICP DAS ISaGRAF
Email	Email, 10 , Email. (size 488 KB)
SMS:	COM1, COM3 COM4 (RS -232) (*) GSM Modem GSM Modem : GTM -201 -RS232 (850/900/1800/1900 GSM/GPRS Modem) GSM/GPRS Modem : http://www.icpdas.com/products/GSM_GPRS/wireless/GSM_GPRS_modem.htm : D 5-5207, 5307 GPRS, GSM/GPRS modem.
()	0 XW107, Master, Slave, Master Master , Slave Master Master 5 Ebus (Ethernet) I/O RS -485 I/O slot 0: XW107 status I/O

CAN/CANopen	COM1 CAN	COM3 ~ COM8 (*) CANopen	I-7530 (RS-232 (sensor). I-7530. (FAQ-086)	CAN PAC
FTP Client	FTP Client	PAC		FTP Server. (FAQ-151)
I/O	(ISaGRAF PAC I/O I/O)			
PWM				
	XW-Board	DO	PWM	8
	500 Hz, : Off: 1 ~ 32767 ms, On: 1 ~ 32767 ms			
(Parallel) DI	XW-Board	DI	ON OFF	8
	: 32-bit, 500 Hz. > 1 ms			
DI	I-7K/I-87K	DI		100 Hz.
	: 0 ~ 65535			
	I-87082:	100 kHz, 32-bit.		
* : COM3 ~ COM8 D 5-xx7 XW-Board * ISaGRAF FAQ: http://www.icpdas.com/faq/isagraf_c.htm * NS-205/NS-208				

1.1 h °-5007/5107/5207/5307

Model	CPU	Flash	SRAM		Ethernet	GPS	GPRS	3G (WCDMA)	Wi-Fi	RS-232/RS-485
h °-5007	80186 80M	512 KB	768 KB	512 KB SRAM	10/100 Base TX	-	-	-	-	1/1
h °-5107						-	-	-	-	
h °-5207						-	-	-	-	
hC-5307						-	-	-	-	
h °-5507						-	-	-	-	

æ h °-5#07(D) h °-5007D.

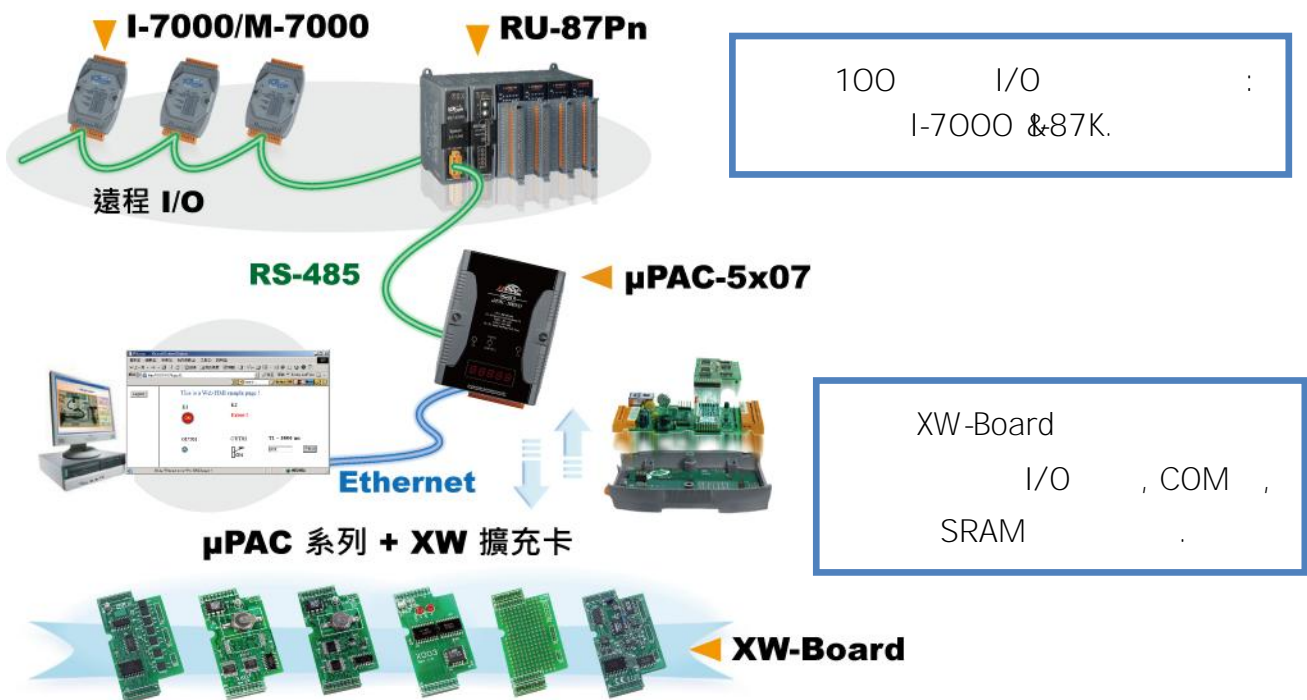
1.2 I/O

RU-87P4/P8 +87K I/O :

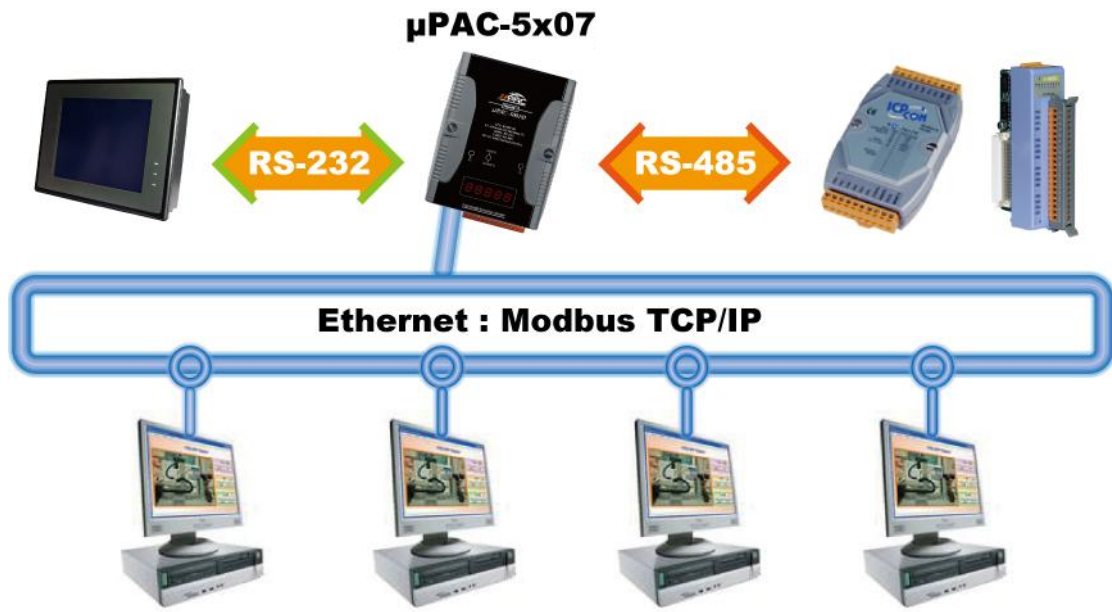
I-87K I/O

I/O

: RU-87Pn I-87K I/O



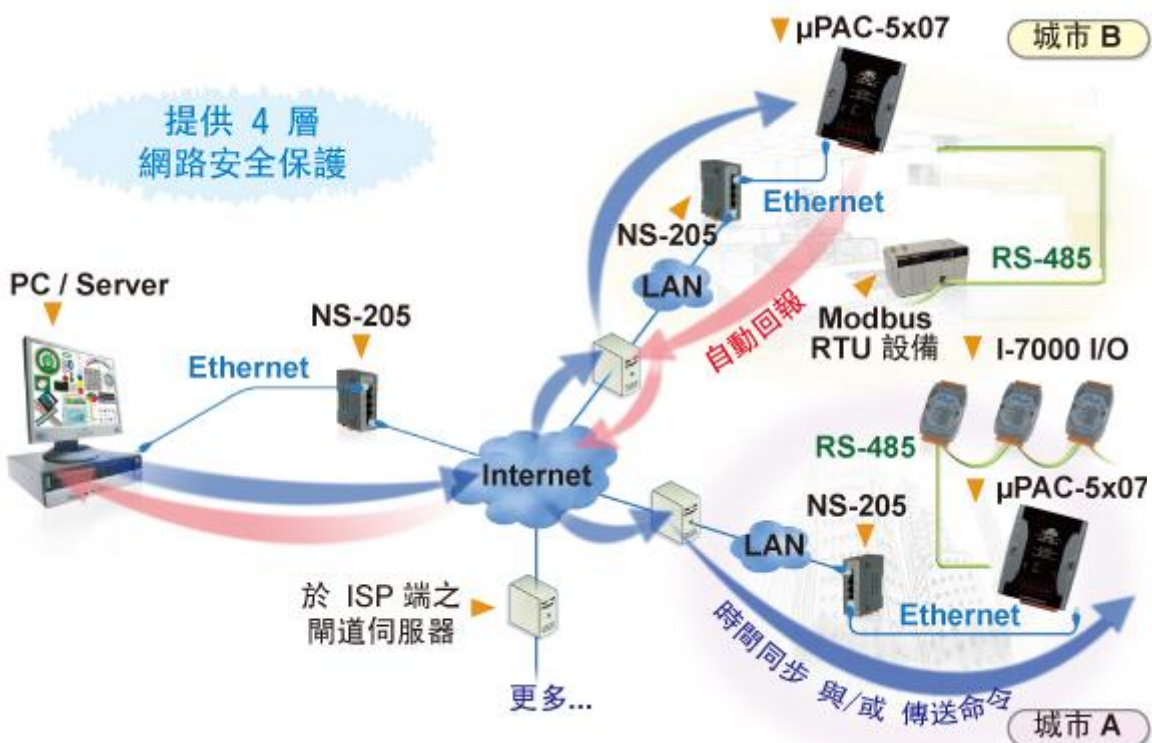
1.3



1.4

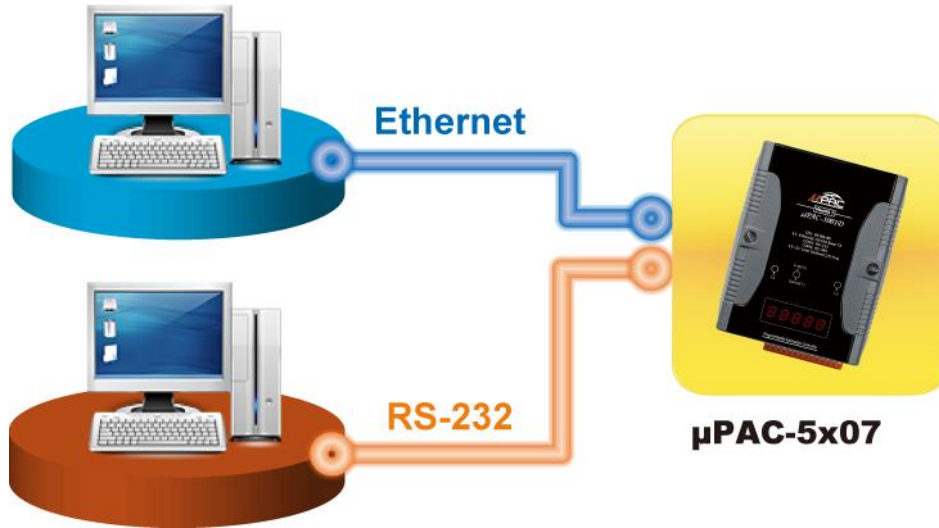
- h 5%0 UDP/IP PC/Server, PC/Server
- : h 5%0 Internet IP
- www.icpdas.com > FAQ > Software > [FIS/GR\(Chinese\) 65](#)

穩定且具成本效益的主動資料採集與回報系統



1.5

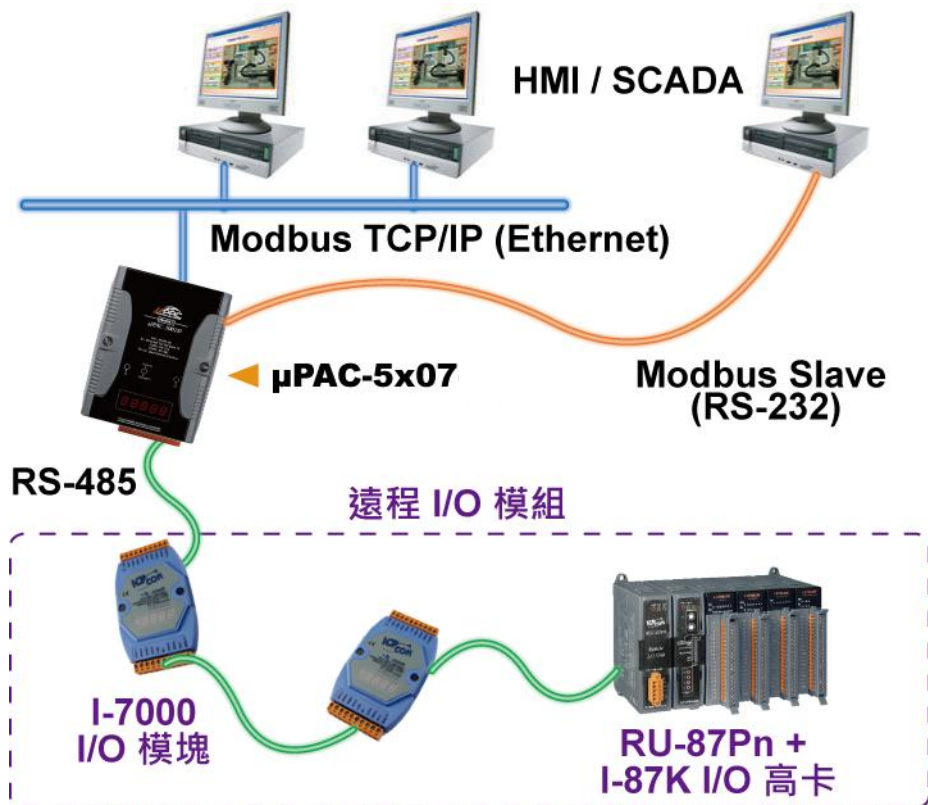
(ICP DAS) UDownloader.exe SRAM PC RS-232 Ethernet



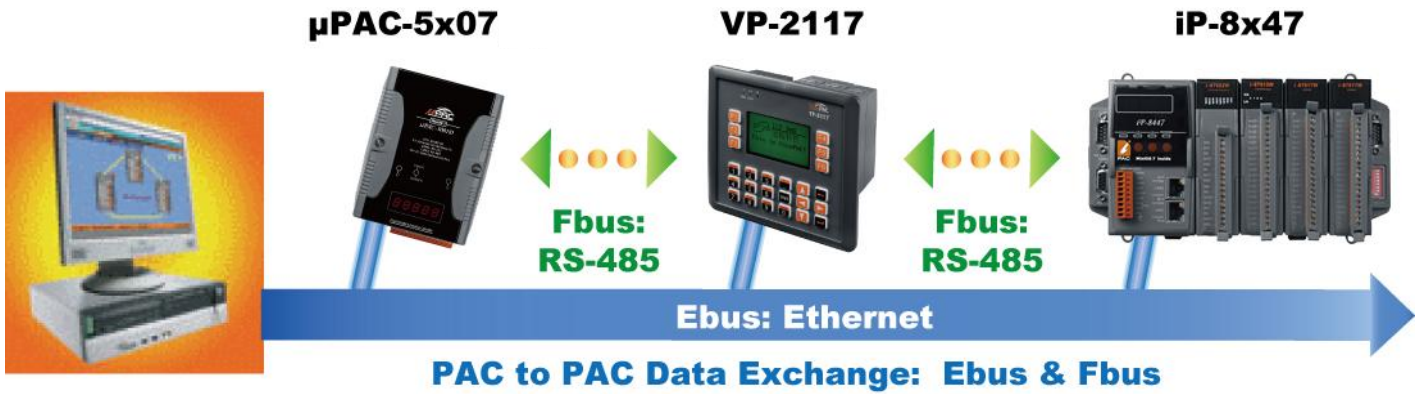
1.6

I/O Modbus

h 5#0 I/O Modbus RTU Modbus TCP/IP



Ebus (Ethernet) Fbus (RS-485)

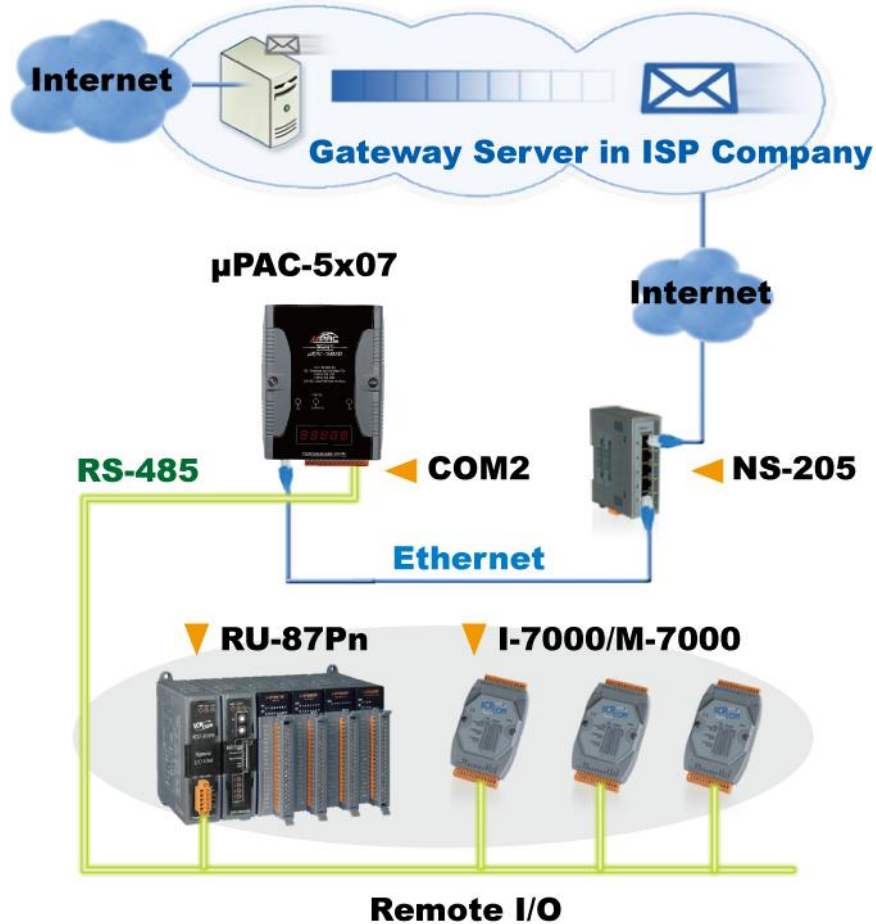


Ethernet Port

Email

488K bytes

10



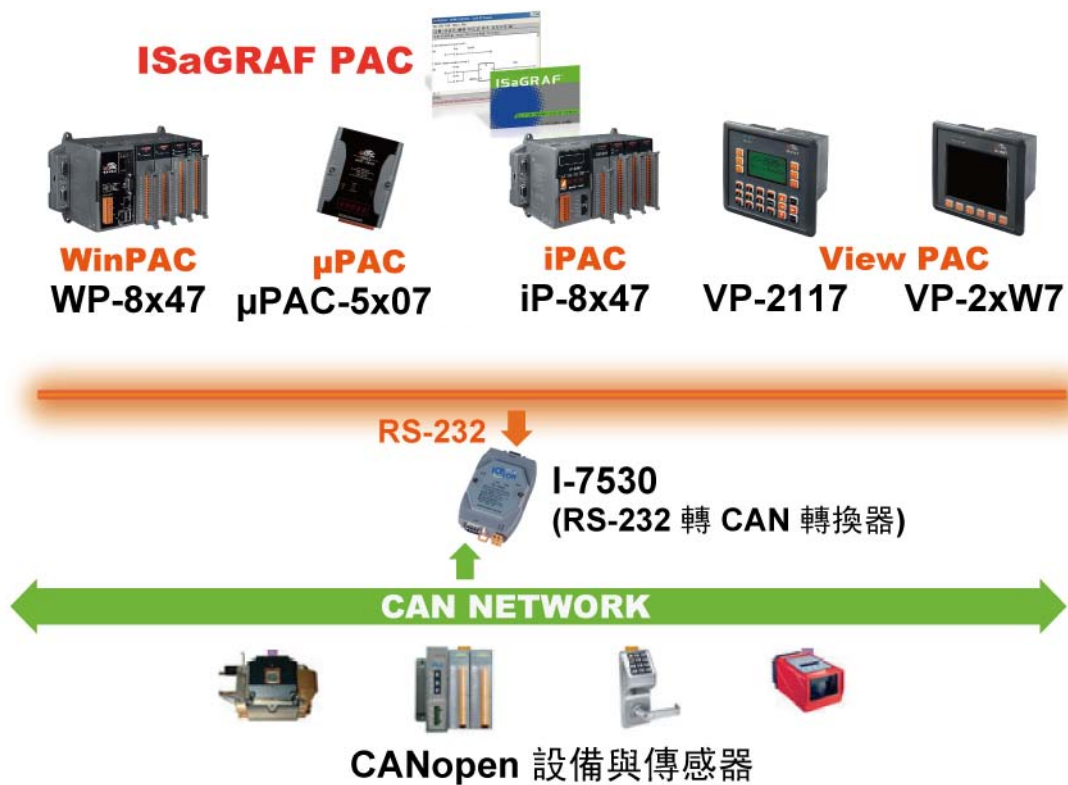
1.9 SMS

- (: , ...)
- www.icpdas.com > FAQ > Software > ISaGRAF Ver.3-10 (Chinese)
- h °-5207/5307 GPRS, GSM/GPRS Modem



1.10 CAN / CANopen

- h °-5207 3 I-7530 (RS232 CAN)
- www.icpdas.com > FAQ > Software > ISaGRAF Ver.3 (Chinese)



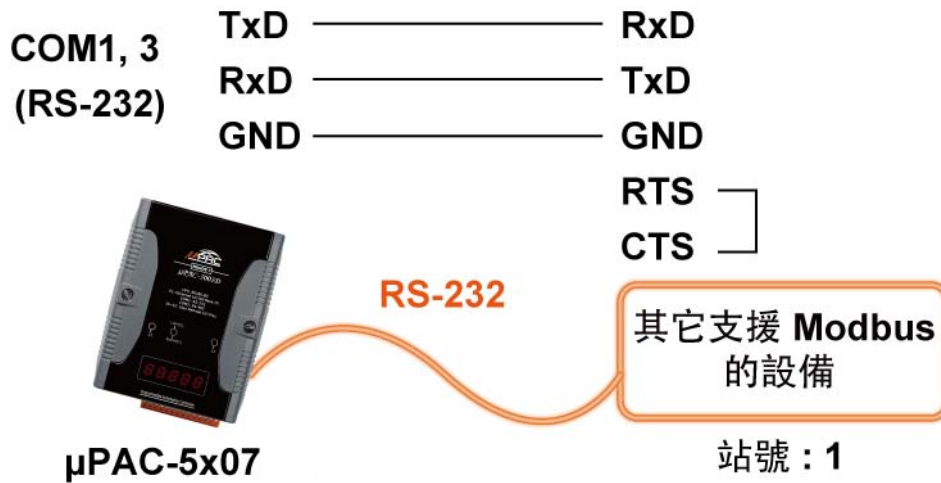
· PAG5x07 COM1, 2, 3 2 , Modbus RTU/ASCII Master
Modbus

RS-485

**COM2/COM3:
RS-485 (D+,D-)**



RS-232



: COM3 ~ COM8 XW-board(X5xx) RS-232/RS-422/RS-485

PAG5x07 I/O (XWboard) DI, DO, AI, AO,
RS-232/485/50M

<http://www.icpdas.com.tw/product/solutions/pac-board-selection.html>

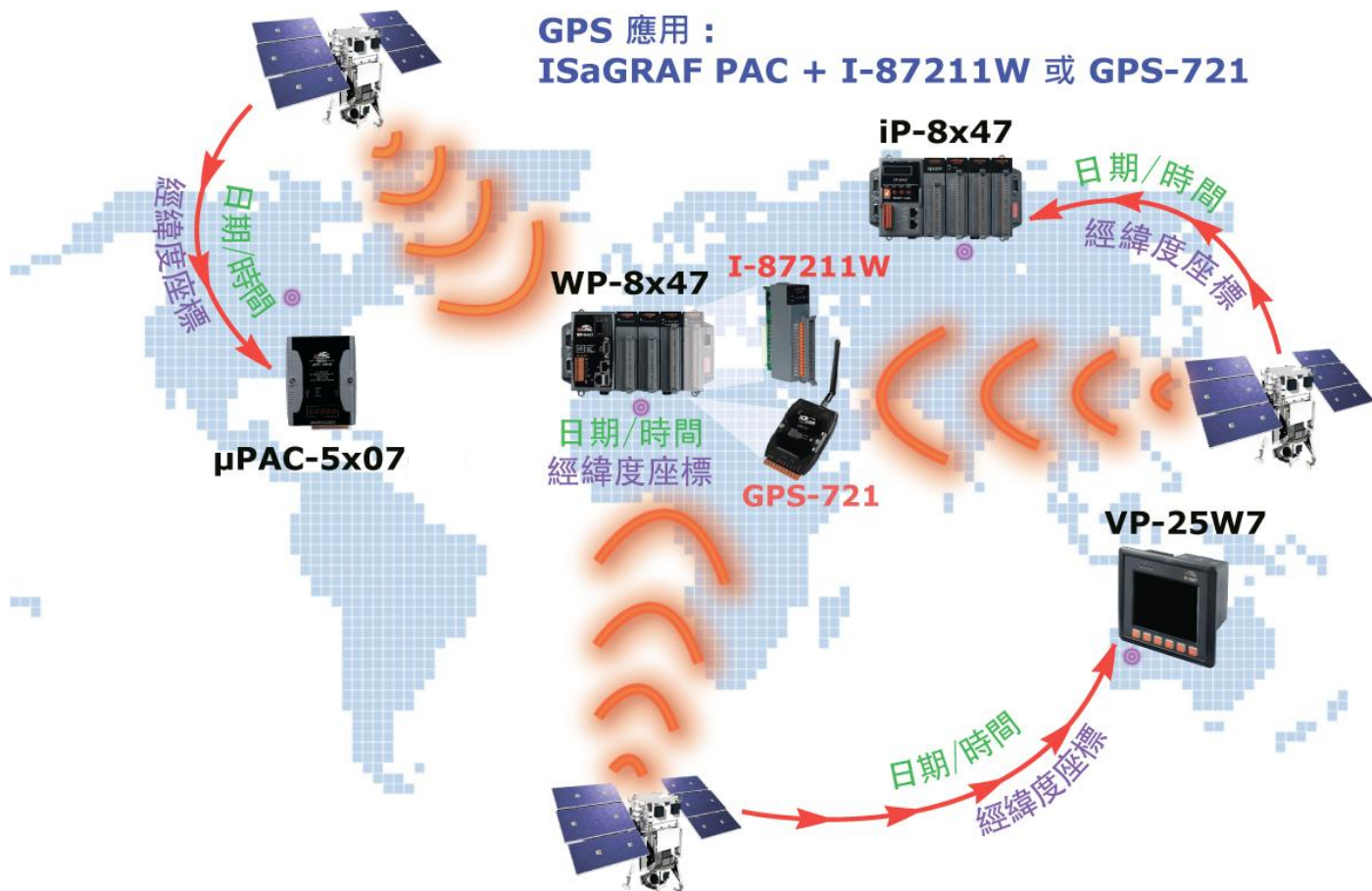
1.12 GPS : ISaGRAF PAC I-87211W GPS721

PAG5007/5207/5307/5507 I-87211W GPS721GPS I/O
 (PAC RS485/232 GPS721 , I-87211W I/O)

GPS , www.icpdas.com > FAQ > Software > ISaGRAF Ver.3-107 (Chinese)

GPS Receiver : www.icpdas.com > Products > Wireless... > Selection Guide > GPS Solution

: PAG5107 GPS



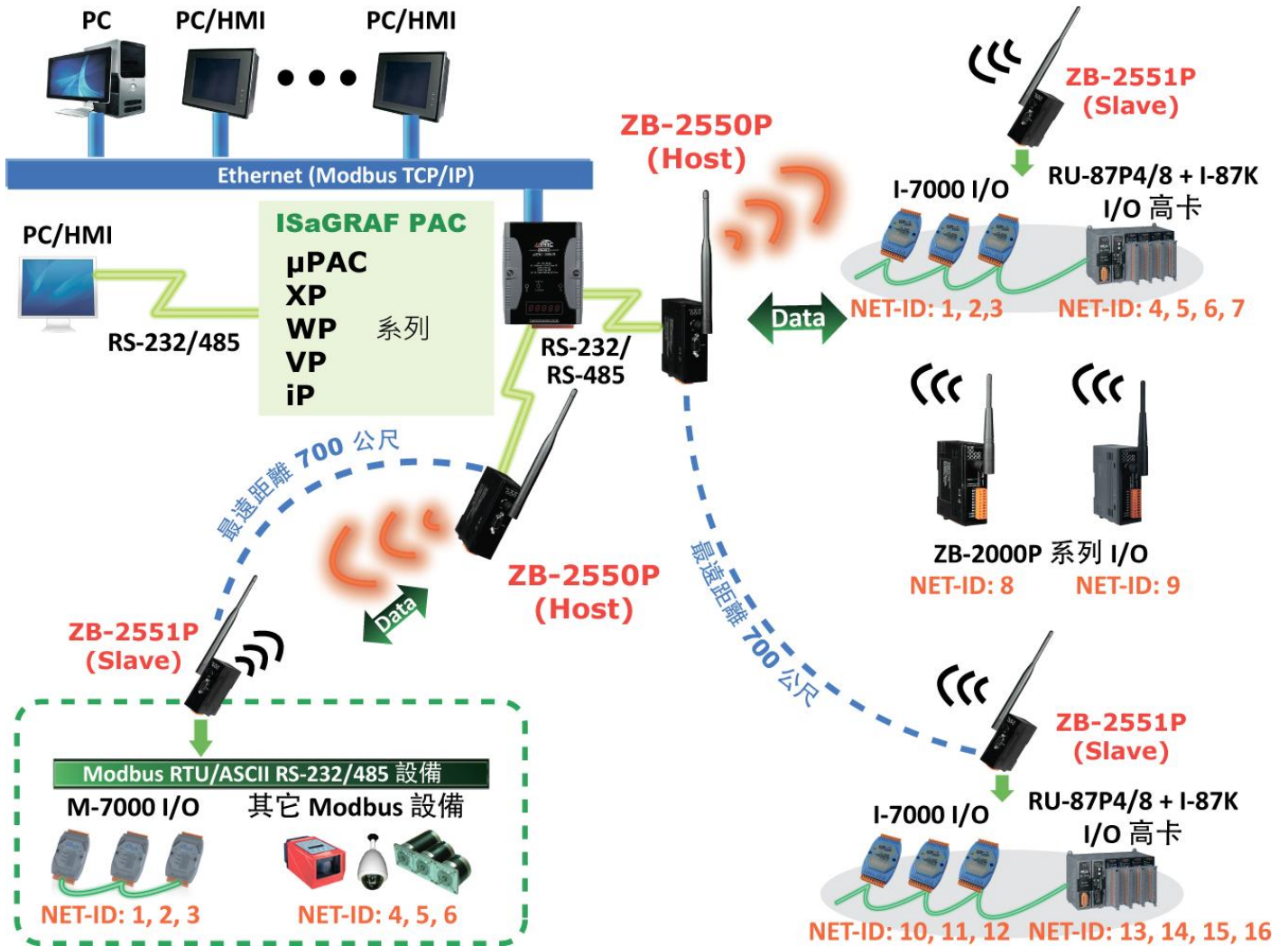
1.13 ZigBee

· ISaGRAFAC ZB-2550P ZB-2551P (ZigBee RS-232/485)
I/O

· www.icpdas.com > FAQ > Software > ISaGRAF Ver.3-1 (Chinese)

無線傳輸方案

ISaGRAF PAC 搭配 ZigBee RS-232/485 轉換器來連接 I-7000/I-87K I/O 模塊與 ZB-2000P 系列 I/O 模塊或其它 Modbus RTU/ASCII 設備



2.1 1 ISaGRAF

ISaGRAF

- A. ISaGRAF Workbench
- B. ICP DAS Utilities for ISaGRAF

ISaGRAF workbench (ISaGRAF) PC
 (B) aPAC5x0 CD

ISaGRAF

- > Windows 95 / Windows 98 / Windows 2000
- > Windows NT Version 3.5 / Windows NT Version 4.0
- > Windows XP / Vista / Windows 7

(www.icpdas.com FAQ > Software > ISaGRAF Ver.3 > FAQ117

ISaGRAF



Windows Vista / Windows (32bit)
 Windows (64bit)

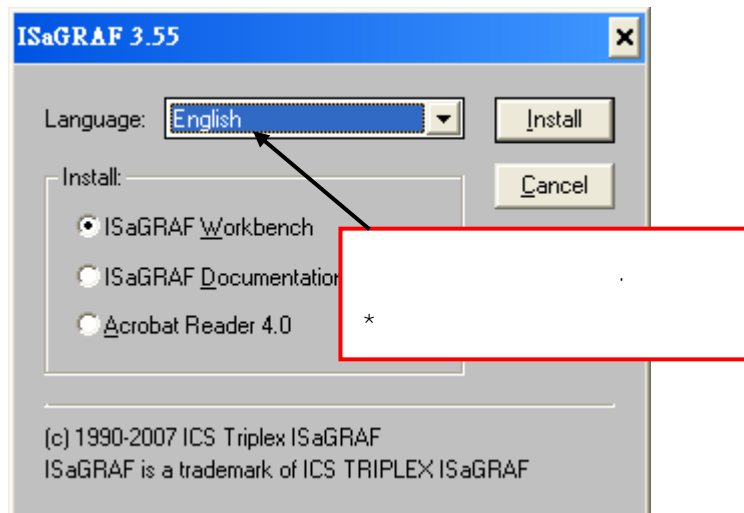
[2.1.4](#)

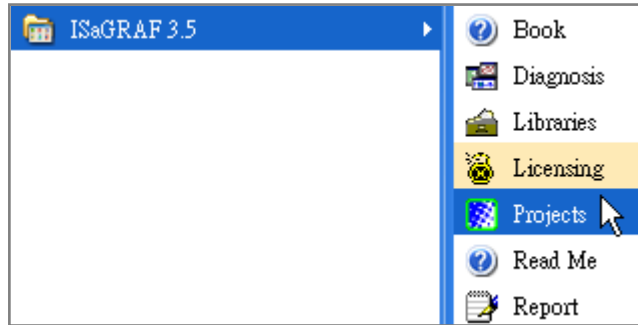
[2.1.5](#)

ISaGRAF

(

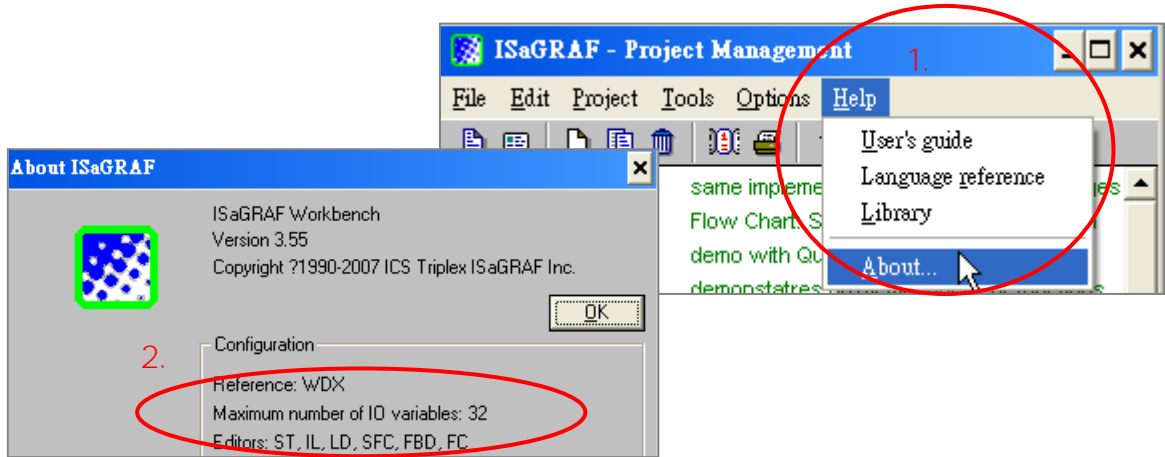
@ 0 8 k ° 7)





21.1:

ISaGRAF (dongle:) USB
 (ISaGRAF 3.51) ISaGRAF (ISaGRAF32E ISaGRAF32C
) ISaGRAF [Help] > [About]
 @ \ ISaGRAF U



U

@ \

Dongle :

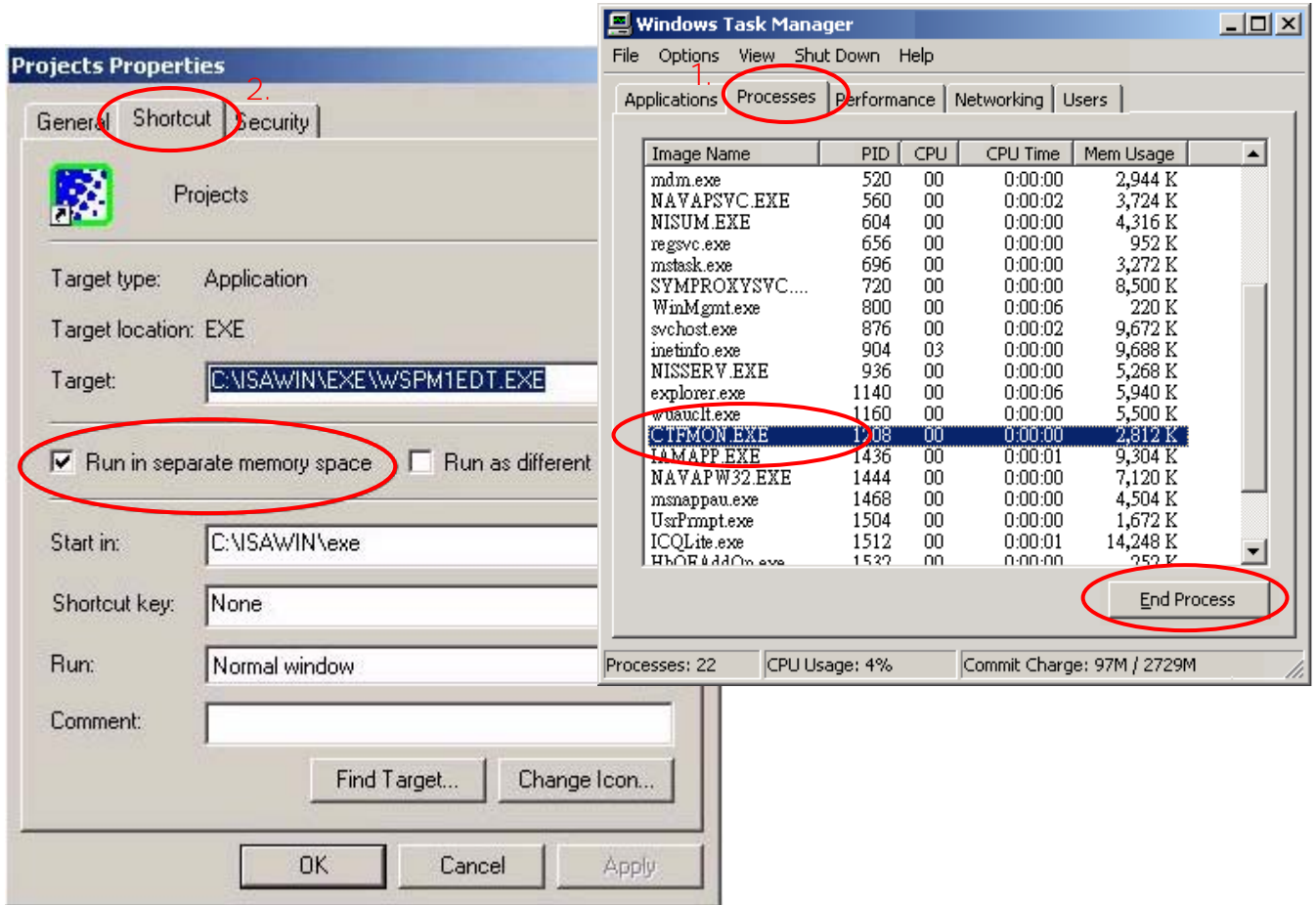
(ISaGRAF)
 ' ISaGRAF80 : \Sentinel5382setup.exe
 ' ISaGRAF : \Sentinel\setup.exe

USB :

1. ISaGRAF USB ISaGRAF 3.51~3.55
 \Sentinel\SSD541-B2bit.exe
2. , ISaGRAF , USB

21.2 Windows 2000

IsaGRAF, 20 ~ 40 ()
 Windows 2000 # u 7 U \ V - ☒ - #
 # u 7 U \ V - ☒ - @ o 8 k ° 7
 o k



21.3 Windows NT

Windows NT IsaGRAF - ☒ -
 V u IsaGRAF C
 C:\ISAWIMEXE\isa.ini
 ASCII (Notepad UltraEdit32)
 [WS001] () [WS001]
 Windows NT RS-232 V u
 [WS001]
 NT=1
 Isa=C:\ISAWIN
 IsaExe=C:\ISAWIMEXE
 Group=Samples
 IsaApl=c:\isawin\smpl
 IsaTmp=C:\ISAWINTMP

?

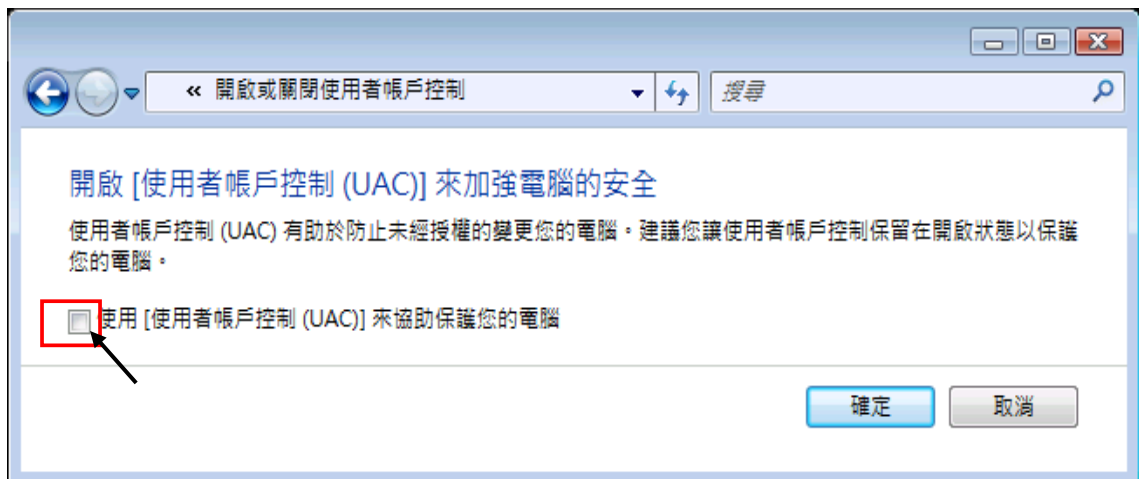


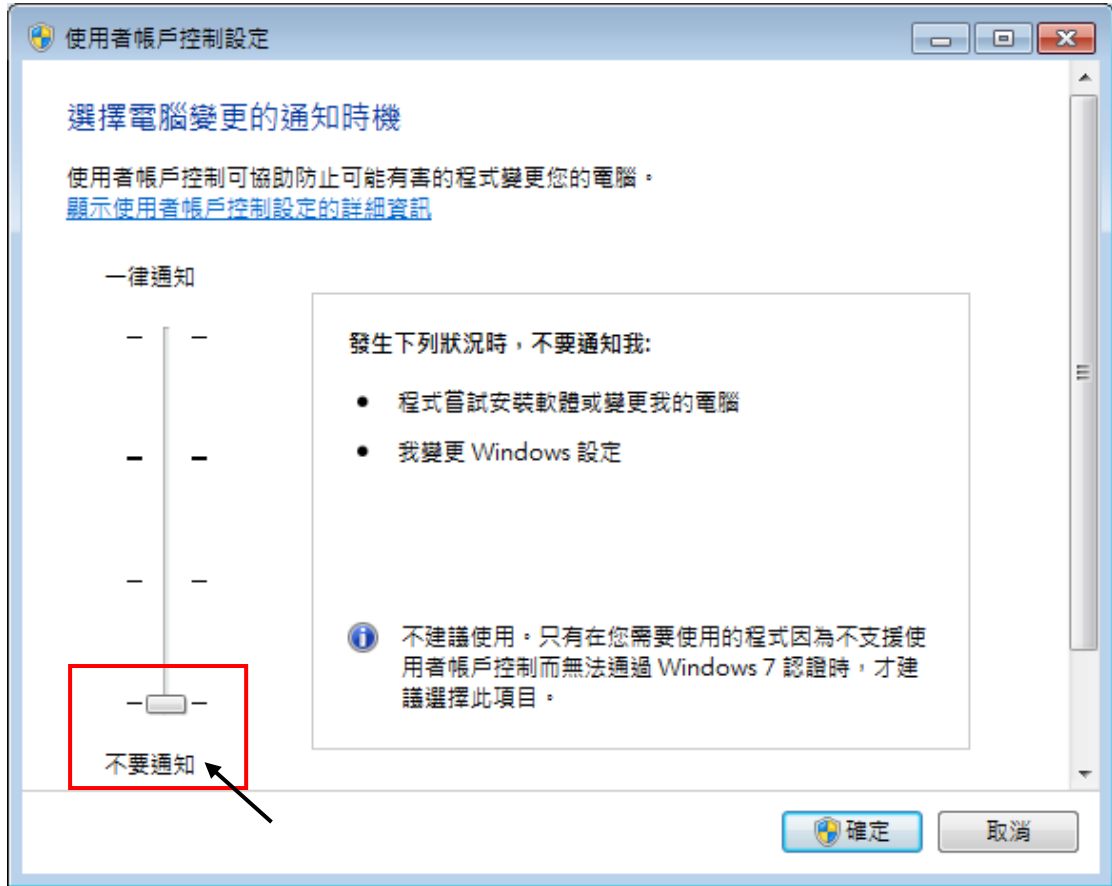
1. [] > [] > [] > [] > [] > []



- 2.

Windows Vista





- 3.
- 4.

[2.1 ISaGRAF](#)

21.5: Windows 7 (64bit)

Windows 7 (64bit) Professional/Enterprise/Ultimate XP
 Mode ISaGRAF Virtual PC XP Mode

Virtual PC XPMode:

1. Windows Virtual PC (<http://go.microsoft.com/fwlink/?LinkID=160479>)
 Windows Virtual PC Windows XP Mode
2. WindowsXPMode-en-NN.exe (nn-NN en-US)
 Windows XP Mode
3. Windows6-KB958559-64.msu Windows Virtual PC
- 4.
5. [] > [] > [Windows Virtual PC] [Windows XP Mode]
6. Windows XP Mode
7. [2.1](#) ISaGRAF

21.6: (Variable Arrays) :

c:\isawin\exe\isa.ini :

[DEBUG]
Arrays=1

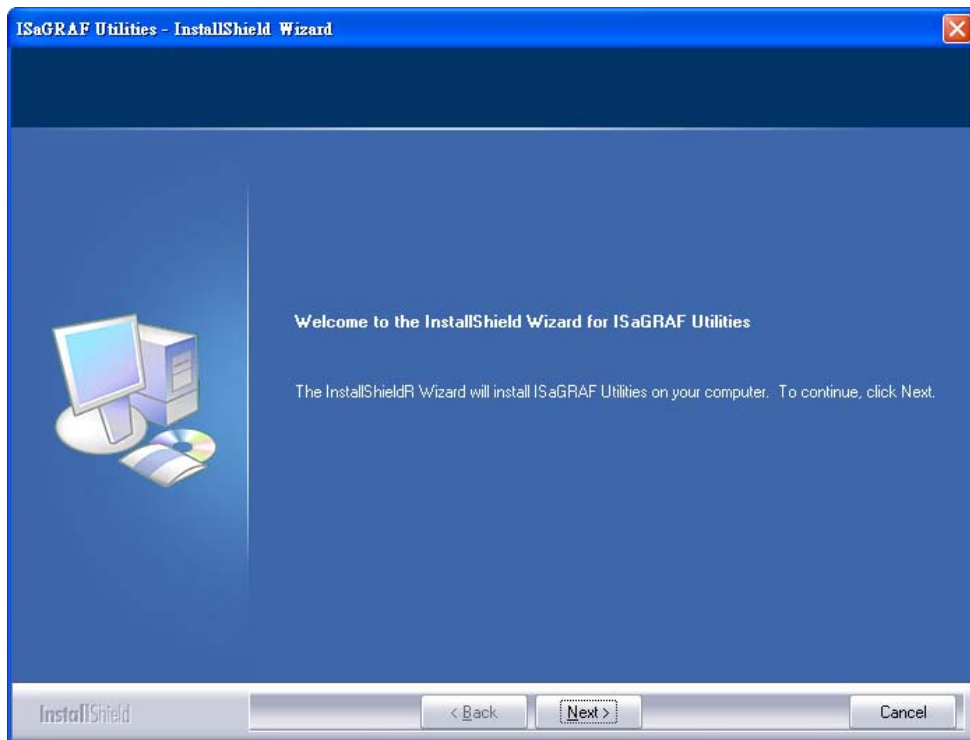
2.2 2 ICP DAS Utilities For ISaGRAF

@# h ') ° o ' y 3 ' 7 : ' @ o 8 k ' 7 ' .

- Ø I/O libraries ISaGRAF PAC
- Ø Modem_Link utility
- Ø Autoscan I/O utility

: ISaGRAF ([2.1](#) : [1](#) ,)

aPAC-5x07 ICP DAS Utilities For ISaGRAF
\\napdo\isagraf\setup.exe



ICP DAS Utilities For ISaGRAF

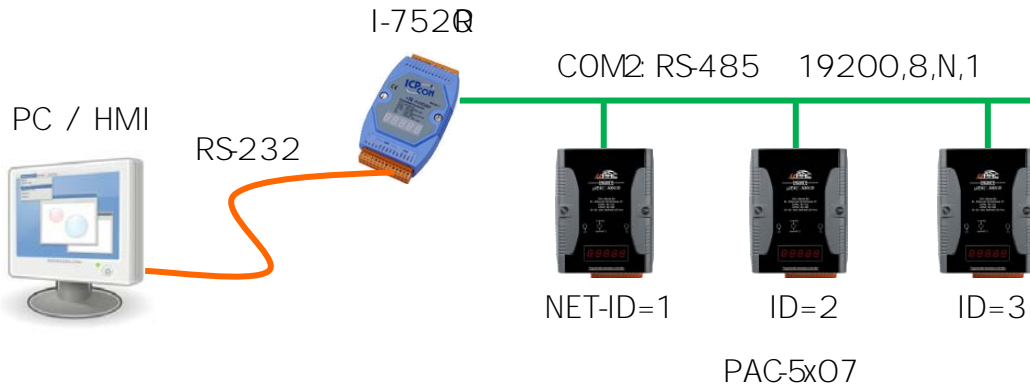
<http://www.icpdas.com/products/8000/isagraf.htm> <http://www.icpdas.com>

Software \ISaGRAF) "Driver" "io_libzip" (C:\)

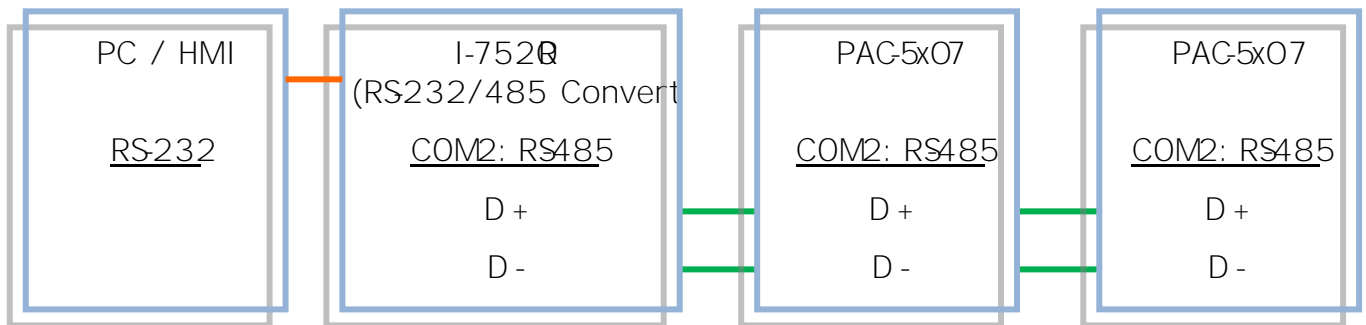
3.2 PC COM2

PC/HMI I-7520 (RS232/RS485) RS-485 PAC-5x07,
 PAC RS-485 NET-ID

COM2: RS-485:



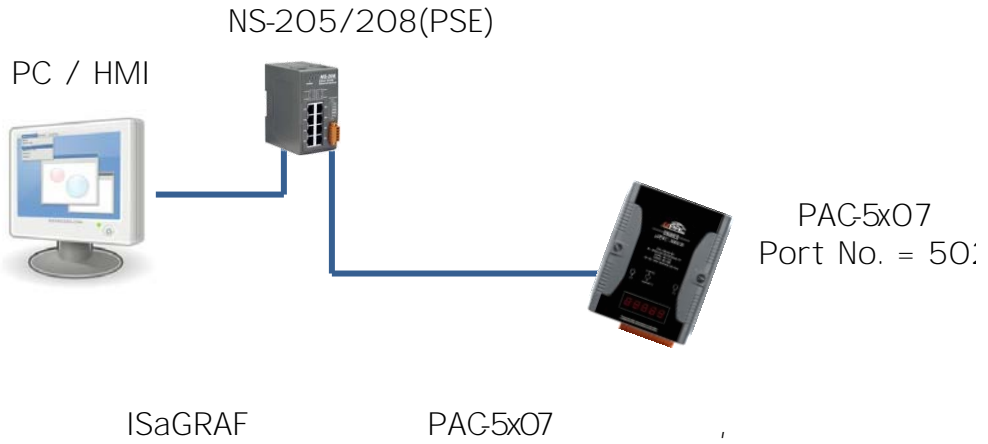
COM2: RS-485



: h 5x07 RS-485 (NET-ID)
35 NET-ID

3.3 PC

PAC5x07 Modbus TCP/Slave , PC HMI
 PAC5x07 6 PC/HMI



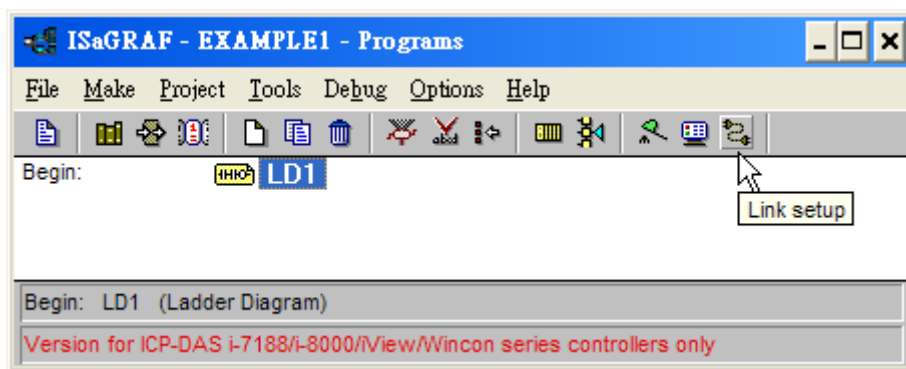
PC

PAC5x07 :

IP , Mask Gateway 3.9

PC :

h 5x07 ISaGRAF 0 o



"PC-PLC Link Parameters"

"Ethernet"

"Setup"

<http://www.icpdas.com/products/PAC500/isagraf.htm>

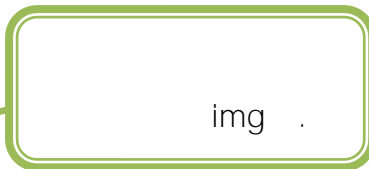
: *** h :5307 (1.00)

1. " PAC5307 (: "c:\ PAC5307)

2. \Napdos\ISaGRAF PAC-500\Driver\5307\1.00 PAC5307
PAC5307

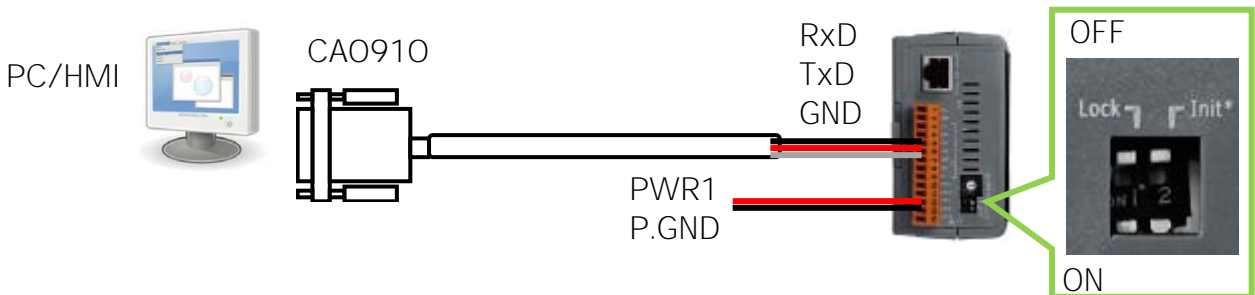
<http://www.icpdas.com/products/PAC500/isagraf.htm>)

- 1. 7188xw.exe
- 2. 7188xw.f4
- 3. 7188xw.ini
- 4. autoexec.bat
- 5. 5k090903.img
- 6. isa5307.exe



3. "7188xw.exe" "7188xw"
(F1)

4. RS-232 (CA0910), PC COM1 COM2 COM1



: COM1/COM2 COM (COM5) h :5307,

#

: COM5 PAC5307, C1 C5()

C1 B115200 P0 D8 S1
F
Xautoexec.bat Xisa5307.exe
w25



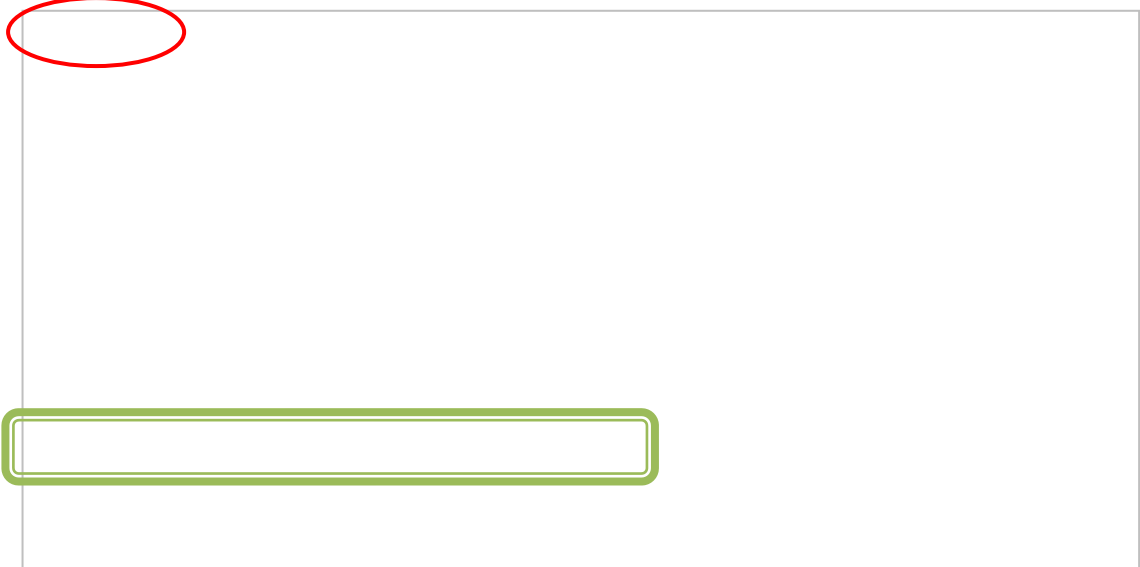
C5 B115200 P0 D8 S1
F
Xautoexec.bat Xisa5307.exe
w25

5. "Init*" ON

6. uPAC500† ,

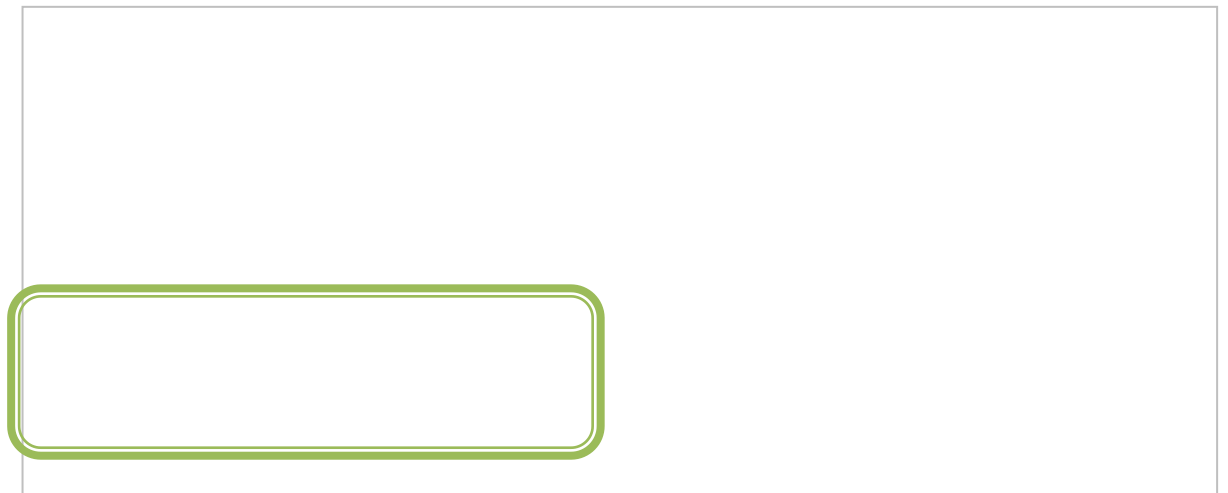
ISaGRAF :

7. "F4"
"autoexec.bat", "isa5307.exe", "5k090903.img"



A 60 ISaGRAF **

8. "dir" "autoexec.bat" "isa5307.exe"

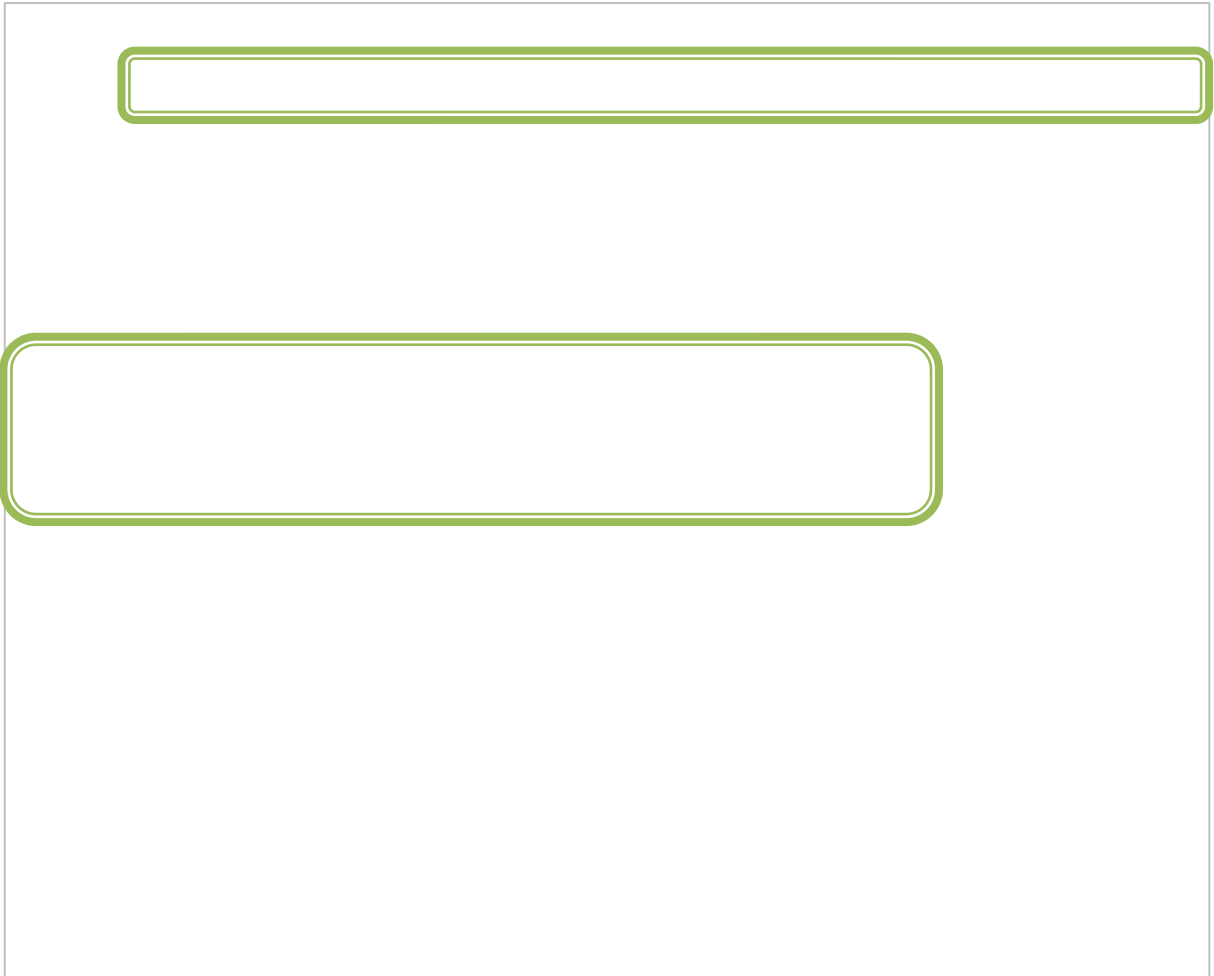


OS :

9. "ver" OS

Driver :

10. "isa5307p=" ,
1: (: isa5307*p=)
2 ,

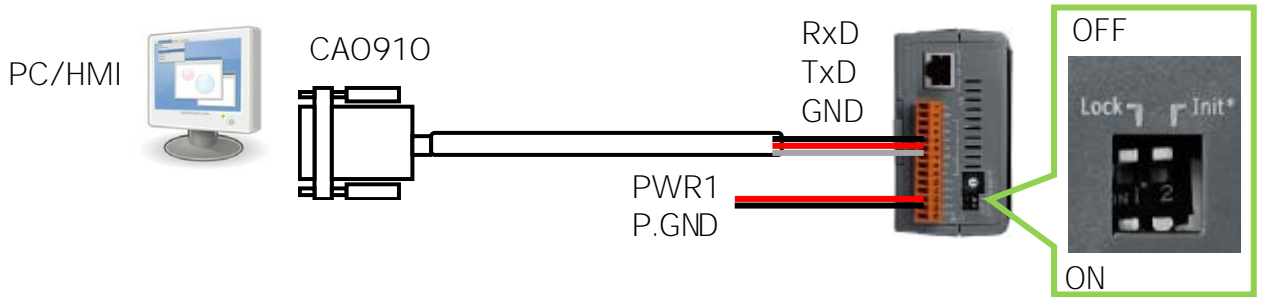


11. ALT_X "7188xw"

12. "Init*" OFF

PAG5x07 (NET-ID) 1 ~
 255 1 RS-485 (NET-ID)

- :(h :5307)
1. PC " PAG5307 (: "c:\ PAG5307)
 2. PAG53 :
 \Napdos\ISaGRAF PAC-5000Driver\53071.00
 3. PAG53 "7188xw.exe"
 4. RS-232 (CA0910), PC COM1 COM2 COM1



COM1/COM2 COM (COM5) PAG5307,
 #

: COM5 PAG5307, C1 C5 ()

```
C1B115200 PO D8 S1
F
Xautoexec.bat X5307.exe
w25
```



```
C5B115200 PO D8 S1
F
Xautoexec.bat X5307.exe
w25
```

5. "Init*" ON
6. uPAC500†

NET-ID:

7. : "isa5307*s=2", NET-ID 1 2

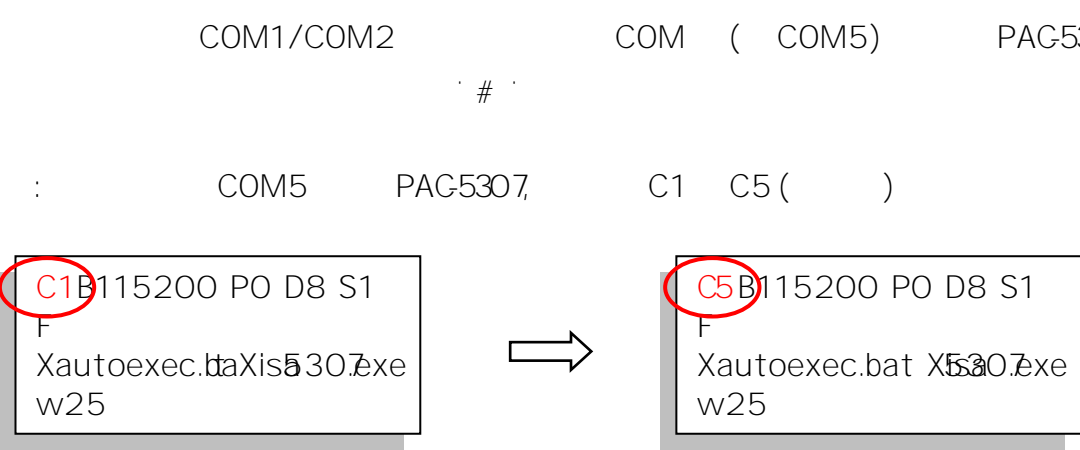
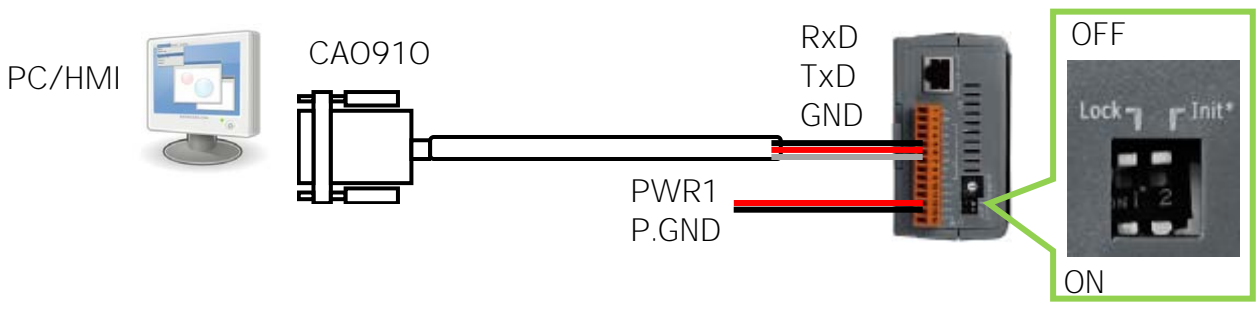
```
uPAC-5001>isa5307 *s=2
Set Net-ID to 2
```

```
( : isa5307*s=2)
```

8. "Init*" OFF

3.6 COM1 (Baud Rate)

1. PC "PAC5307" (: "c:\ PAC5307")
2. h-53# :
3. PAC53 "7188xw.exe"
4. RS-232 (CA0910), PC COM1 COM2 COM1



5. "Init*" ON
6. uPAC500†

COM1 :

7. "isa5307b=n" COM1 , n = 0-9 :

1=2400, 2=4800, 3=9600, 4=19200, 5=38400, 6=57600,
7=115200, 8=300, 9=600, 0=1200

```
uPAC-5001>isa5307 *b=3
```

(: isa5307b=3)

8. "Init*" OFF

3.7 PAC-5x07 COM1 Modbus Slave

PAC-5x07 COM1 Modbus RTU Slave
 ModbusSlavePort COM1 COMxxx function
 COM1 ModbusMasterPort

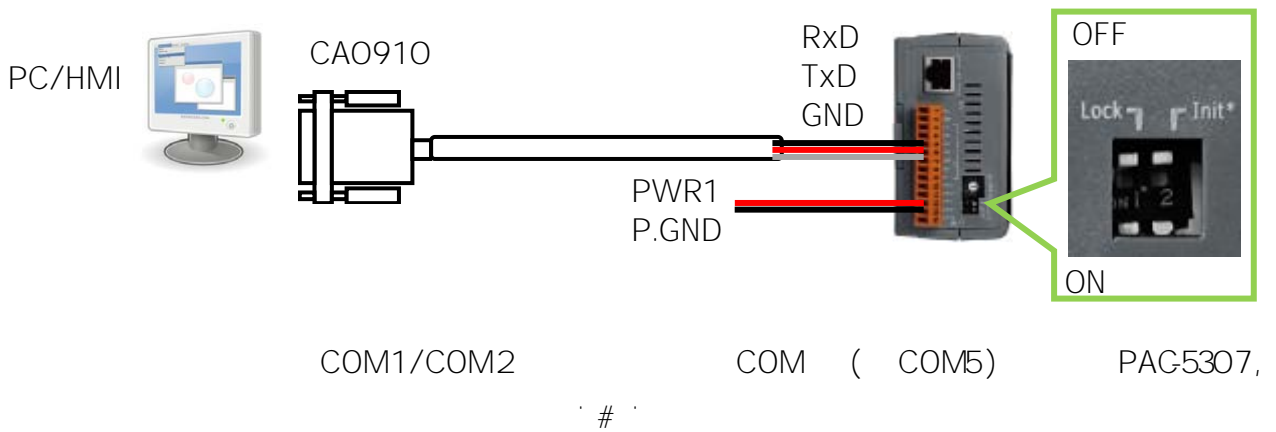
:(h °-5307)

1. PC " PAC-5307 (: "c:\ PAC-5307)

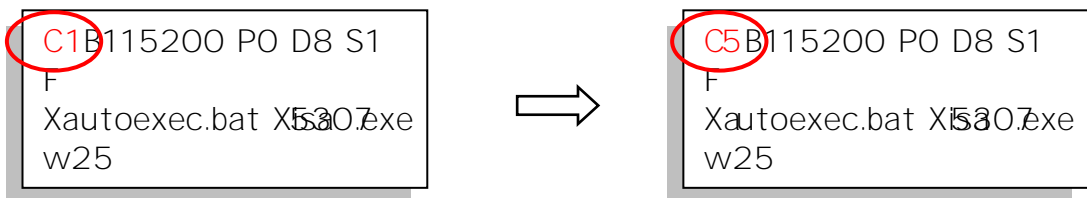
2. h-53# :
 CD \Napdos\ISaGRAF PAC-5000Driver\53071.00

3. PAC53 "7188xw.exe"

4. RS-232 (CA0910), PC COM1 COM2 COM1



: COM5 PAC-5307, C1 C5 ()



5. "Init*" ON

6. uPAG500†

COM1:

- 7. "isa5307f=1" COM1 (COM1 ModbusSlave)

```
uPAC-5001>isa5307 *f=1  
Com1 is free now
```

```
( : isa5307f=1)
```

- 8. "7188xw" , PC COM1/COM2

- 9. "Init*" OFF

:(COM1)

COM1 Modbus RTU Slave Port "isa5307f=0" :

```
uPAC-5001>isa5307 *f=0  
Com1 is define as Modbus RTU
```

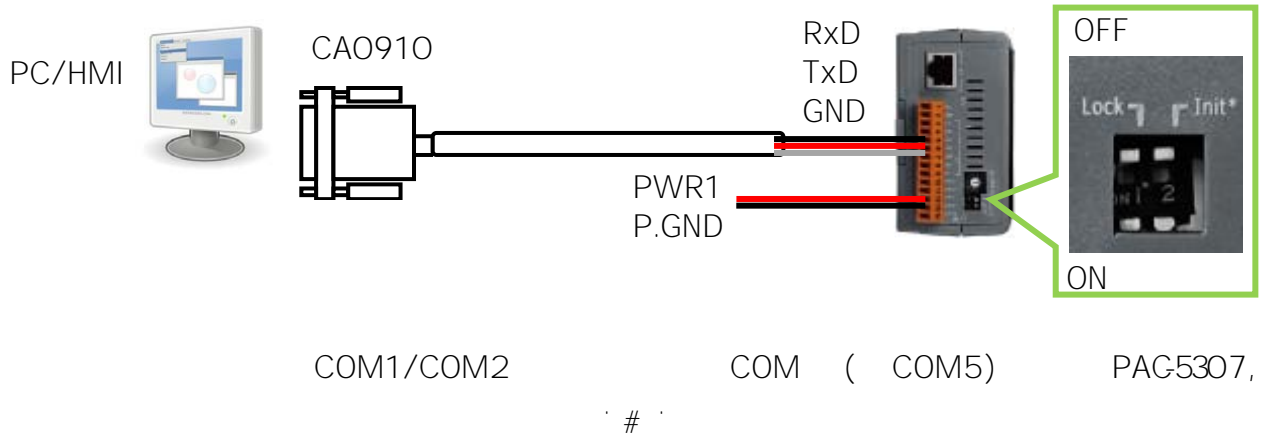
3.8 COM2 COM3 Modbus RTU Slave

PAG5x07 XW5xx COM3 COM Port
 COM2/3 Modbus RTU Slave :

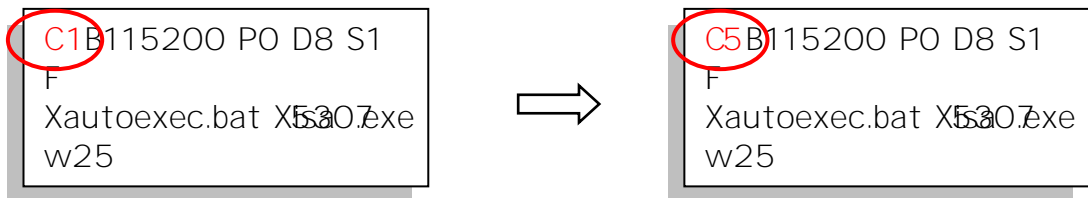
: COM2/COM3 Modbus RTU Slave

: (h : 5307)

1. PC " PAG5307 (: "c:\ PAG5307)
2. PAG53 :
 CD \Napdos\ISaGRAF PAG-5000\Driver\5307\1.00
3. PAG53 "7188xw.exe"
4. RS232 (CA0910), PC COM1 COM2 COM1



: COM5 PAG5307, C1 C5 ()



5. "Init*" ON
6. uPAG500†

COM2 COM3 Modbus RTU Slave

7. "isa5307x=PB" COM2/3 , Modbus RTU Port

"P" (P : 2 3)

"B" (B : 0 ~)9

1=2400, 2=4800, 3=9600, 4=19200, 5=38400 6=57600,
7=115200, 8=300, 9=600, 0=1200

COM Port Baud rate Modbus RTU Port

"PB" = 20 ~29, COM2 Modbus Slave Port

"PB" = 30 ~39, COM3 Modbus Slave Port

: COM2 Modbus RTU Slave Port, Baud Rate 19200

```
uPAC-5001>isa5307 *x=24
Com2 is defined as Modbus RTU
```

(: isa5307x=24)

8. "7188xw" , COM1/COM2

9. "Init*" OFF

COM2/COM3:

COM2/COM3 Modbus RTU Slave , "isa5307x=f"

```
uPAC-5001>isa5307 *x=f
COM2/COM3 port is not as Modbus Slave port
```

3.9 PAC-5x07 IP & Mask & Gateway

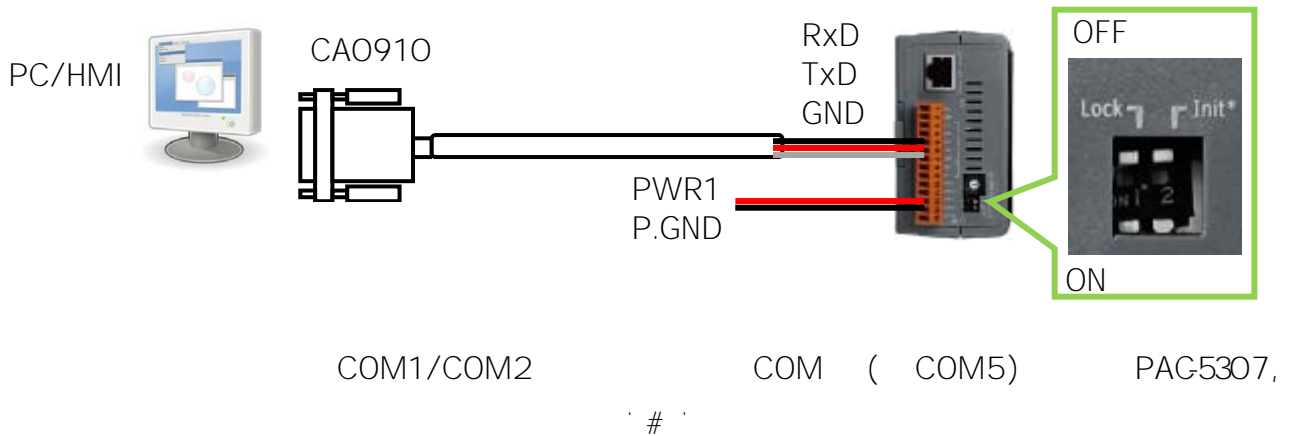
:(h °-5307)

1. PC " PAC5307 (: "c:\ PAC5307)

2. PAC53 :
CD \Napdos\ISaGRAF PAC5000Driver\53071.00

3. PAC53 "7188xw.exe"

4. RS-232 (CA0910), PC COM1 COM2 COM1



: COM5 h °-5307, C1 C5 ()

```

C1 B115200 PO D8 S1
F
Xautoexec.bat X5307.exe
w25
    
```



```

C5 B115200 PO D8 S1
F
Xautoexec.bat X5307.exe
w25
    
```

5. "Init*" ON

6. uPAG500†

IP & Mask & Gateway

7. "ip" IP
"ip xxx.xxx.xxx.x xx" IP
: > ip 192.168.150

```

uPAC-5001>ip
IP=192.168.1.233
uPAC-5001>ip 192.168.1.205
Set IP=192.168.1.205
[ReadBack]IP=192.168.1.205

```

8. "mask" (mask)
 "mask xxx.xxx.xxx.xxx"
 : > mask 255.255.255.0

```

uPAC-5001>mask
MASK=255.255.255.0
uPAC-5001>mask 255.255.0.0
Set MASK=255.255.0.0
[ReadBack]MASK=255.255.0.0

```

9. "gateway" gateway gateway
 "gateway xxx.xxx.xxx.xxx" gateway
 : > gateway 192.168.0.254

```

uPAC-5001>gateway
Gateway=192.168.1.1
uPAC-5001>gateway 192.168.0.254
Set GATEWAY=192.168.0.254
[ReadBack]Gateway=192.168.0.254

```

10. "7188xw" , COM1/COM2

11. "Init*" OFF

PAG5x07

ISaGRAF

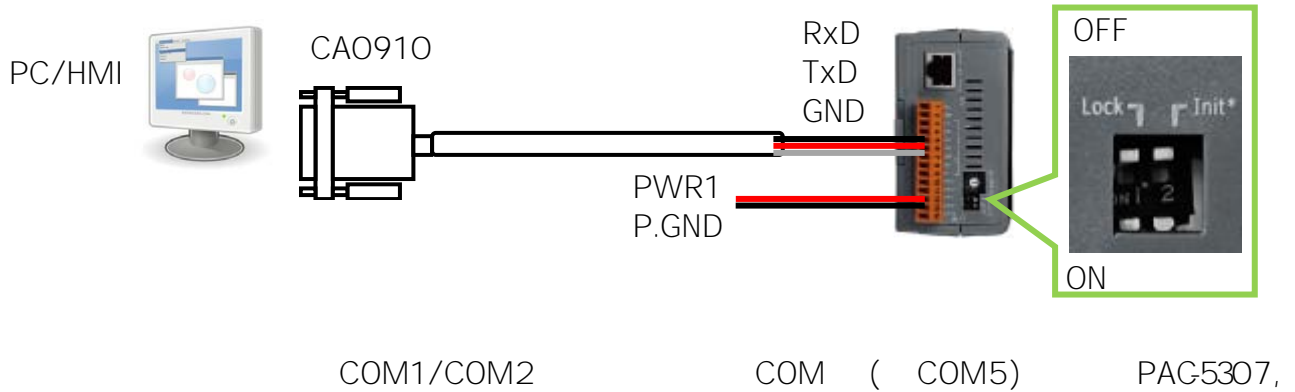
ISaGRAF

PAG5x07

ISaGRAF

:(h :5307)

1. PC " PAG5307 (: "c:\ PAG5307)
2. h-53# :
- CD \Napdos\ISaGRAF PAC-5000\Driver\5307\1.00
3. PAG53 "7188xw.exe"
4. RS-232 (CA0910), PC COM1 COM2 COM1



: COM5 PAG5307, C1 C5 ()

```
C1 B115200 PO D8 S1
F
Xautoexec.bat X5307.exe
w25
```



```
C5 B115200 PO D8 S1
F
Xautoexec.bat X5307.exe
w25
```

5. "Init*" ON
6. uPAG500†

ISaGRAF :

7. : "isa5307*d="

```
uPAC-5001>isa5307 *d=
ISaGRAF Project Deleted.
```

```
( : isa5307d=)
```

8. "7188xw" "Init*" OFF

3.11 DCON Utility I-7000 I-87K I/O

PAC5x07 64 (ICP DAS) I/O -"I-7000"
 I- M I/O

I-7000 I-87K I/O DCON Utility I-7000
 I-87K (NET-ID)
 DCON Utility RS-485 I/O I/O

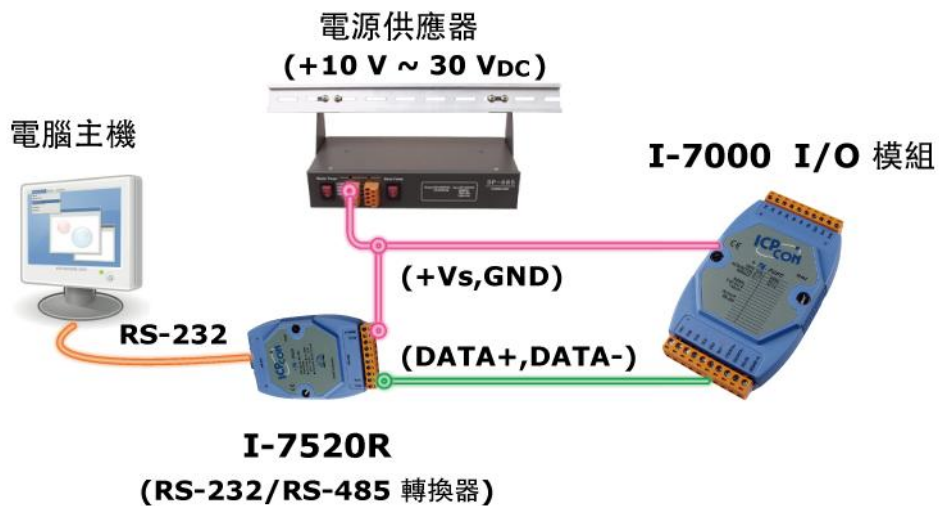
DCON Utility :

<ftp://ftp.icpdas.com/pub/cd/8000cd/napdos/driver/dcon/ut>

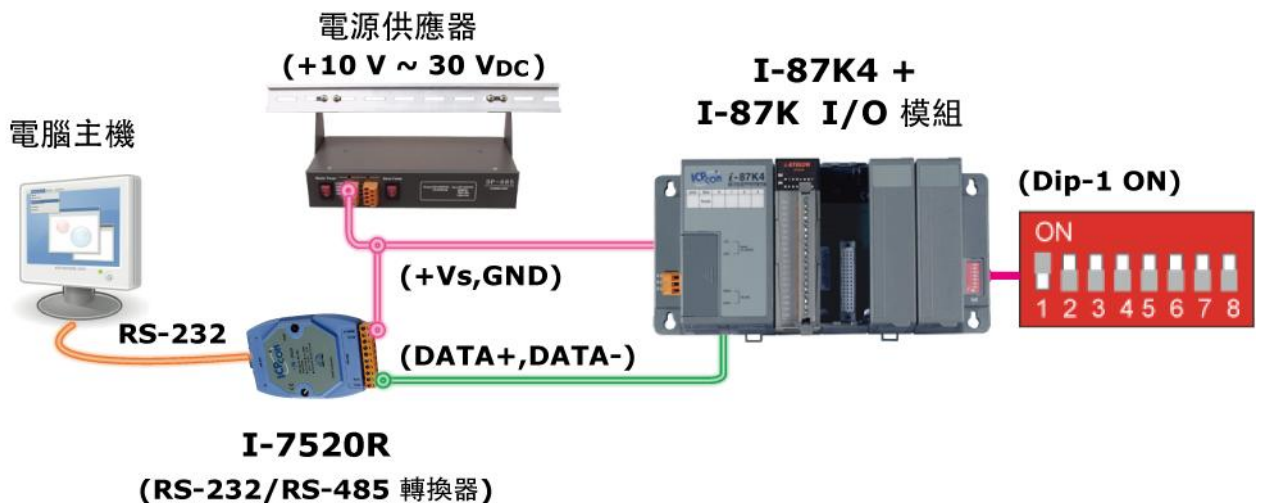
1:

+10V~ +30V_{DC}

I-7000 : ()



I-87K : ()



2 I/O

()

I/O

()

():

I/O	I-7000	M-7000	I-87K
	1	1	1
	9600	9600	115200
Checksum	Disabled	Not defined	Disabled
	DCON Protocol	Modbus Protocol	DCON Protocol

():

I/O	7000 (I-7000 M-7000)	I-87K
	0	0
	9600	115200
Checksum	Disabled	Disabled
	DCON Protocol	DCON Protocol

I/O :

I-7000 I-7000 , INIT GND(DIP

@ V @ u),

*I-87K: I-87K , I-87K4/5/8/9 DIP

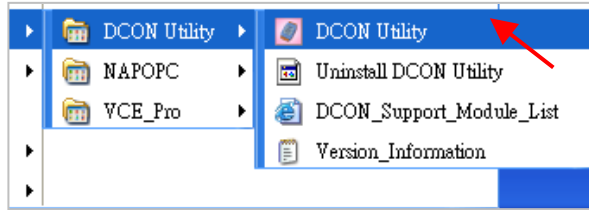
DIP1 ON ,

: I-87K9 I-87K5/0 , Dip-1 ,

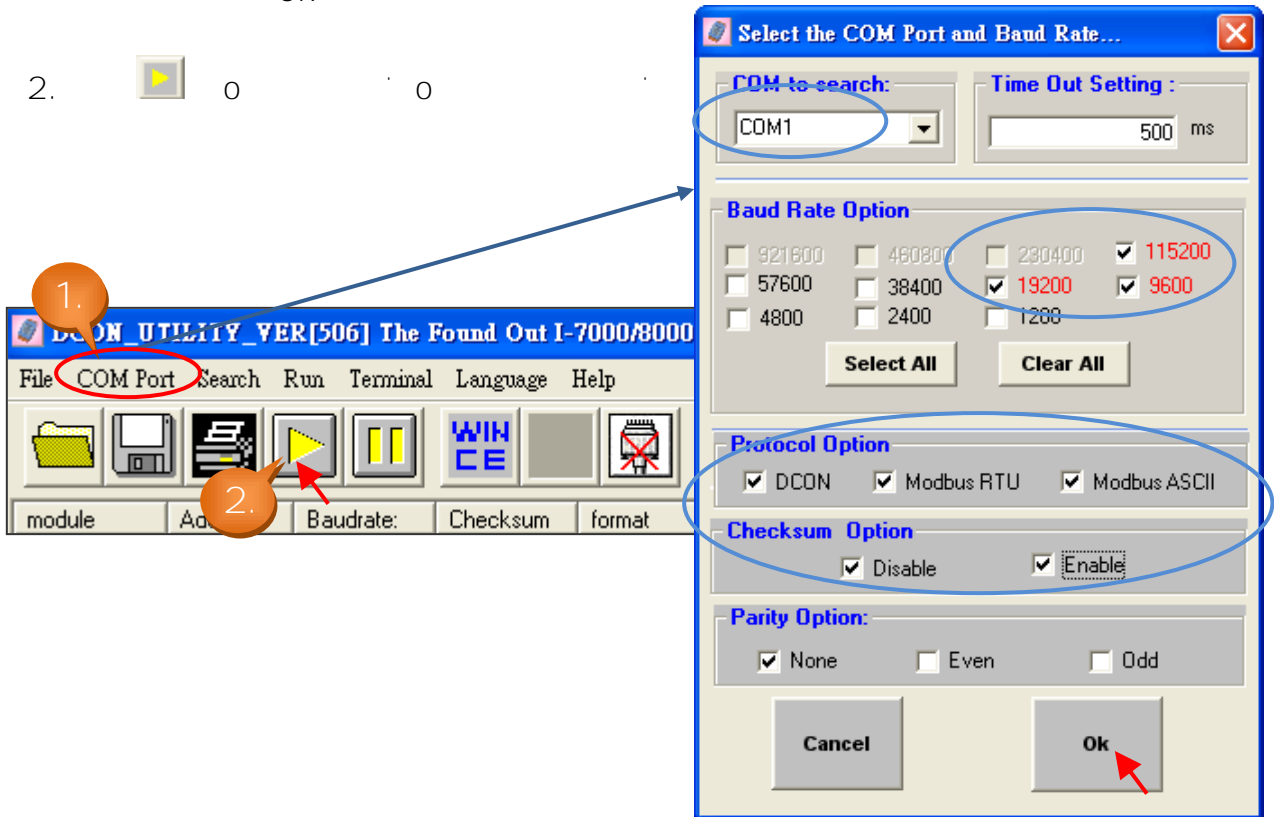
DCON Utility I-87K

3: COM Port (Baud Rate)

[DCON Utility]:

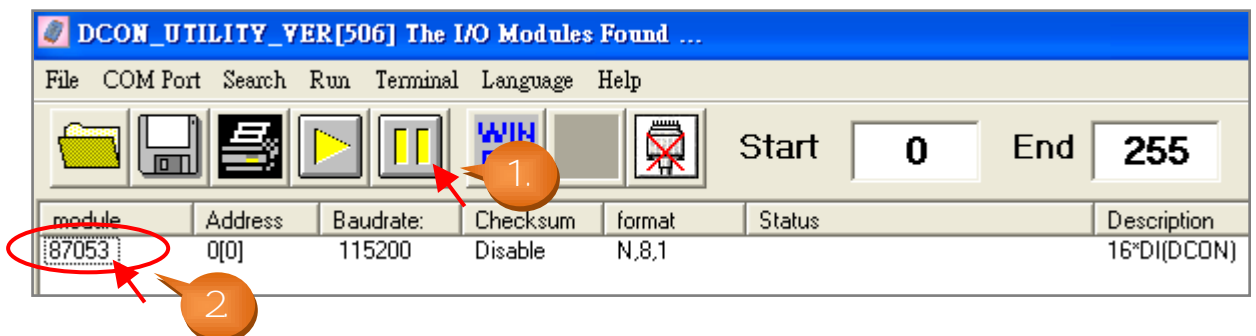


1. "COM Port" COM Port BaudRate
BaudRate,Protocol Checksum
"OK"

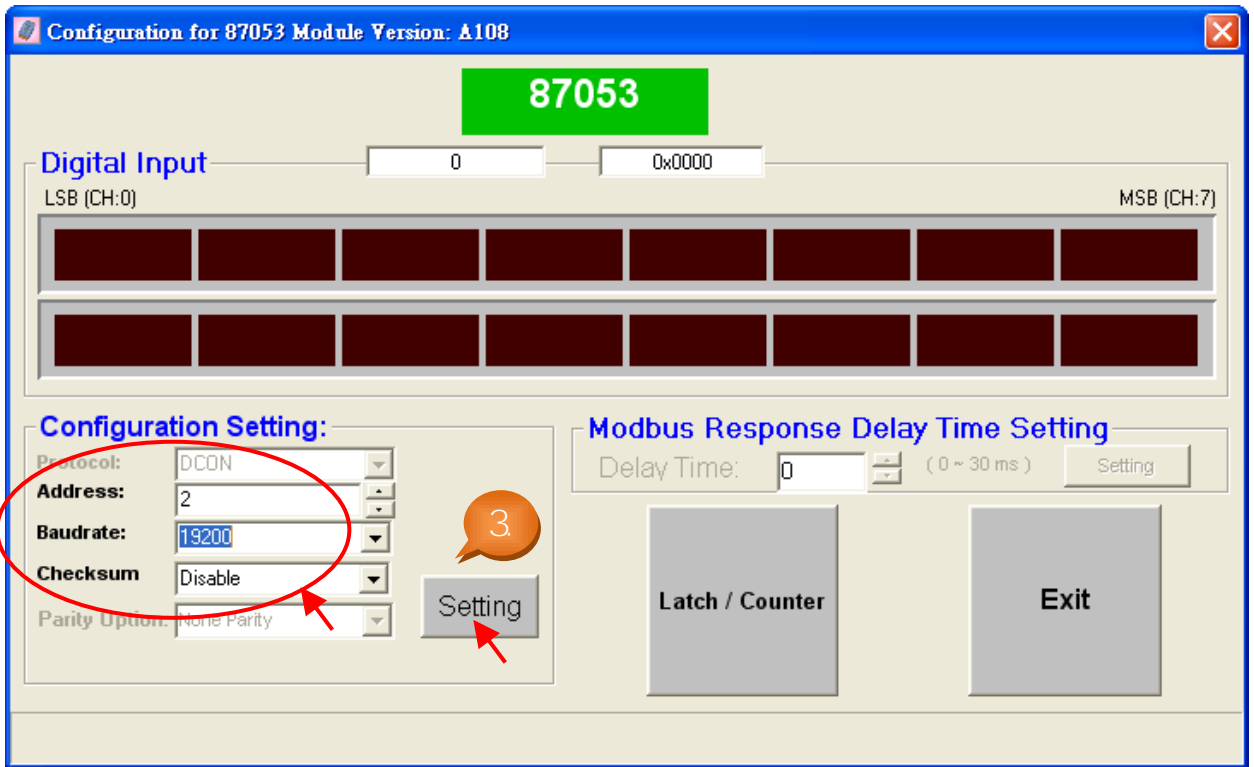


4:

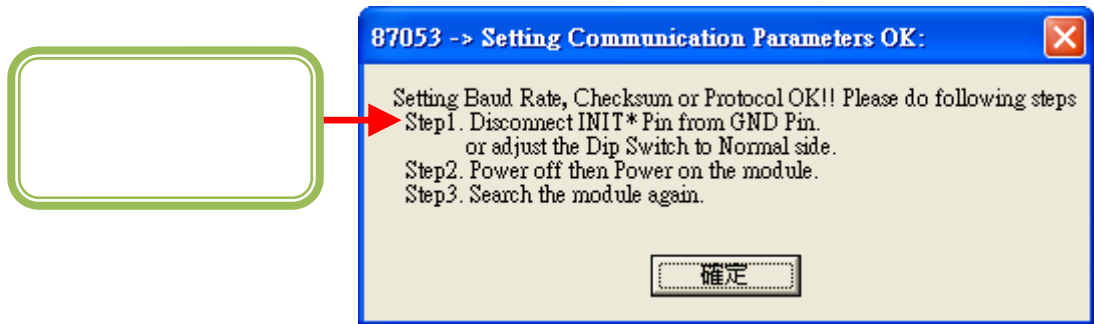
- 1.
- 2.



3. Address, Baudrate, Checksum, Setting



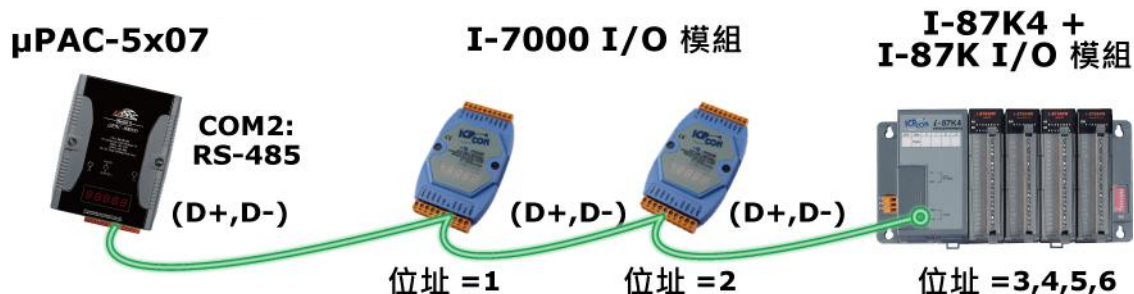
4. DIP OFF



: I-7000 , INIT* GND ,

3.12 I-7000 I-87K I/O

PAC5x07 COM2:RS-485 (ICP DAS) I-7000 I-87K
I/O I/O



: h 5x07 64 (40) I-7000 I-87K
I/O I-7000 I-87K (NET-ID),
Checksum (: Disabled)

I-7000 I-87K

[ISaFRAF](#)

6 :

[I-7000 I-87XX "](#)

3.13

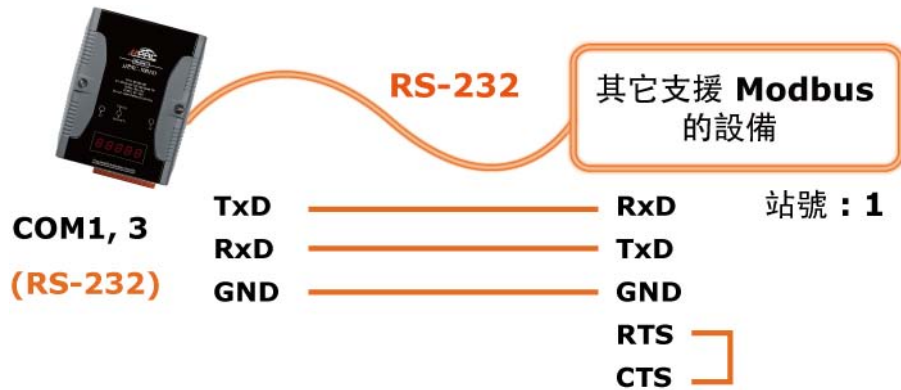
Modbus Master/Slave

PAC5x07 (COM1 2/3) 2 Modbus "Slave"(COM12,3) 2 Modbus Master

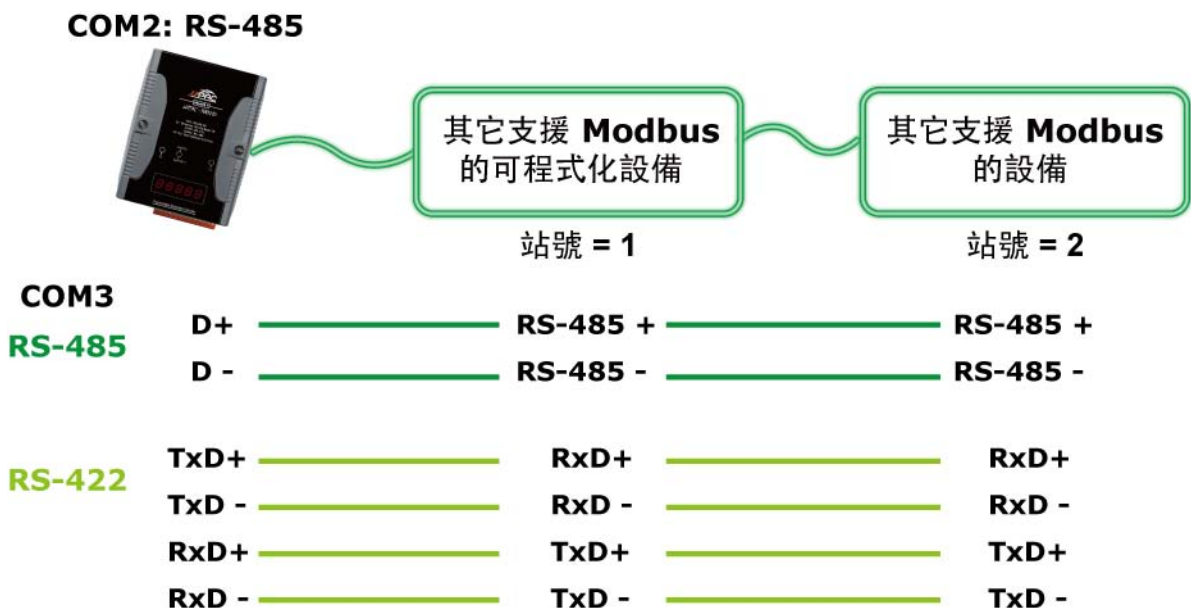
COM3: h 5x07 COM3 XW-board XW5xx
 RS-232 (XW503, W504 I/O)
 RS-485(XW511 I/O) RS-422(XW507 I/O)

_____: RS-485 RS-422 h 5x07 Modbus
 NET-ID (1 ~ 255) , Checksum
 (: Disabled)

RS-232 :



RS-485/RS-422 :

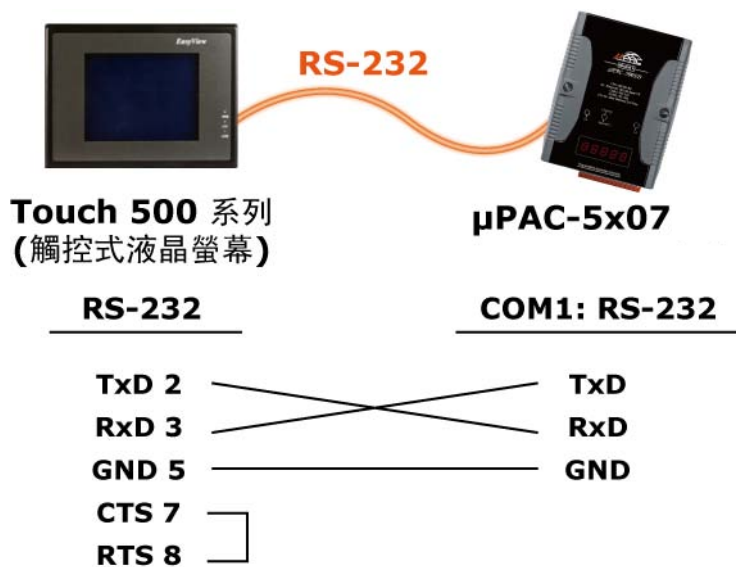


3.14 HMI

PAC5x07 COM1:RS-232 HMI (Human Machine Interface)

(ICP DAS) "Touch"

<http://www.icpdas.com/products/Products.htm#P8>



3.15 ISaGRAF

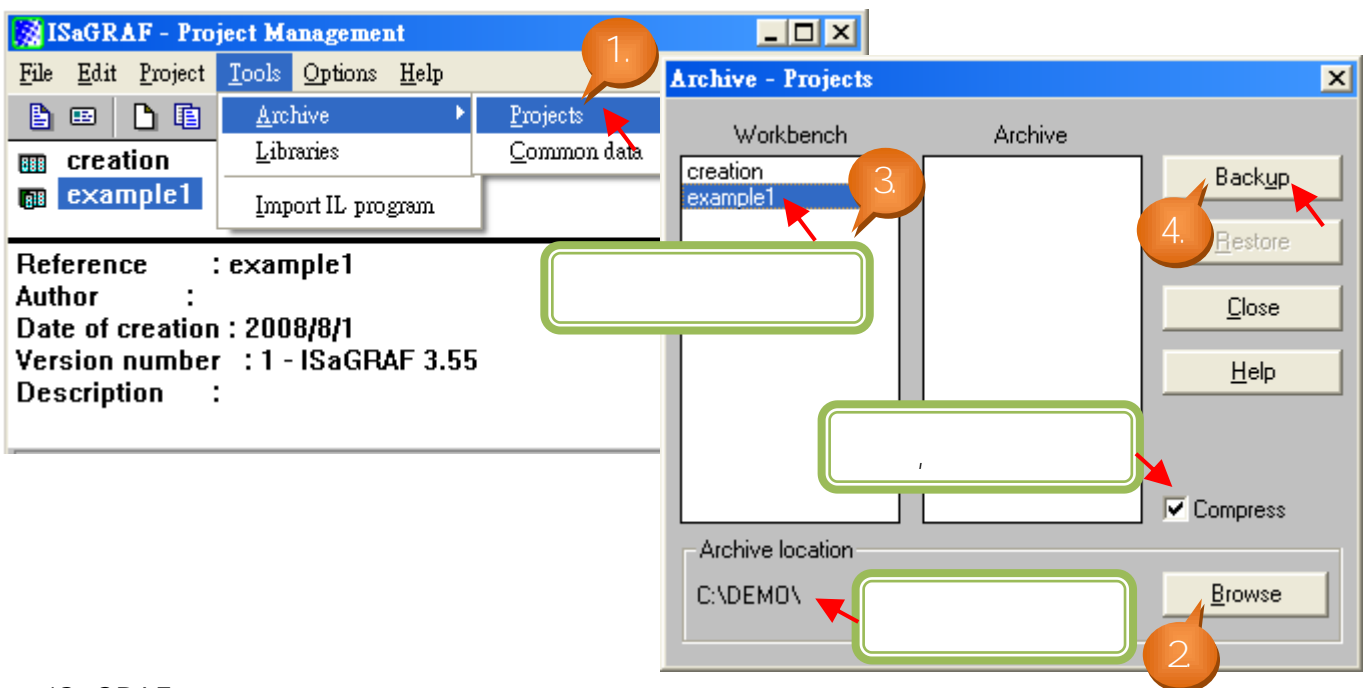
ISaGRAF

ISaGRAF

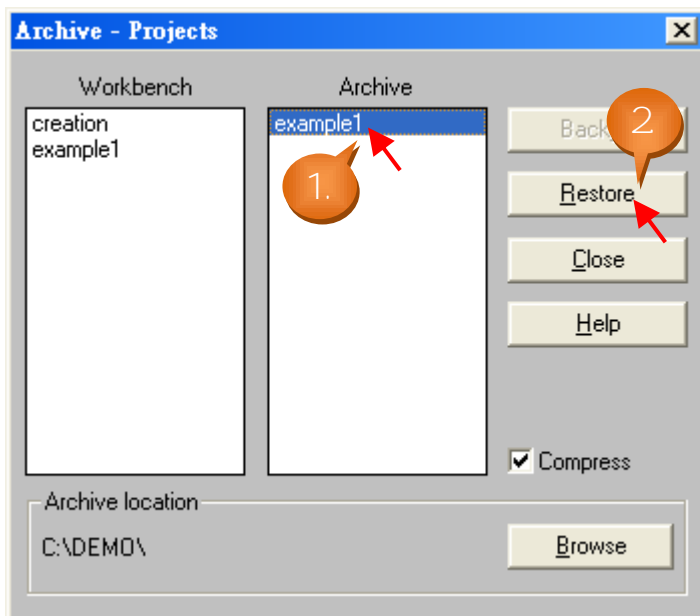
email service@icpdas.com

ISaGRAF

1. ISaGRAF Project Management , [Tools]> [Archive]> [Projects]
2. [Archiv Project]s , Browse
3. Workbench ("Compress" ,)
4. Backup



ISaGRAF



ISaGRAF ,

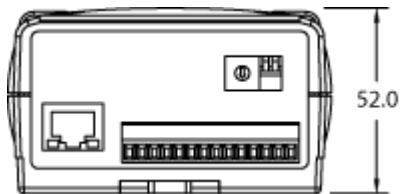
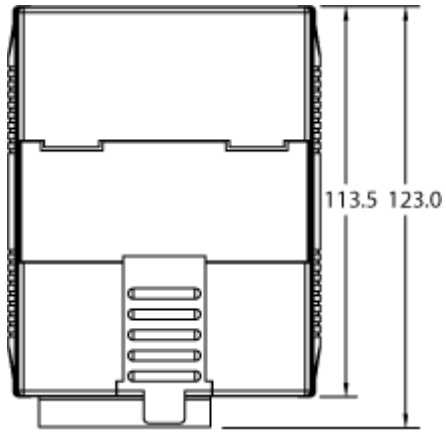
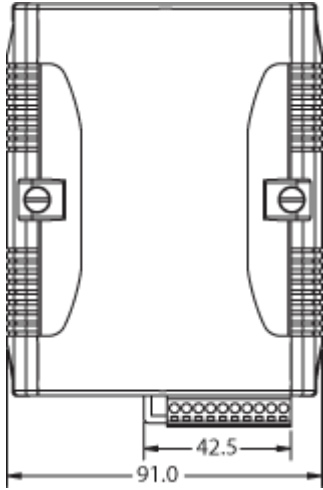
1. Archive Projects Archive ,

2. Restore

ISaGRAF

3.16 PAC-5x07

:mm



(DIN-Rail)

(Piggyback)

