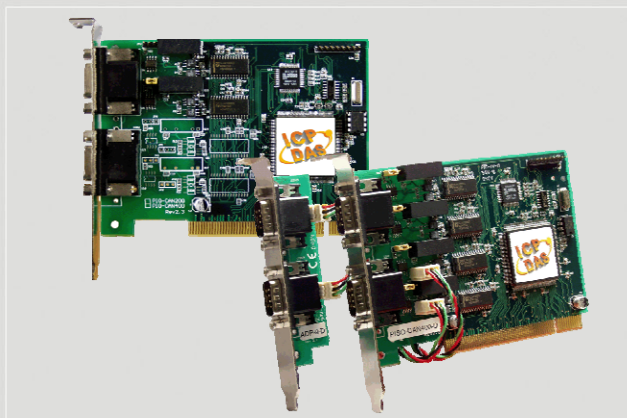


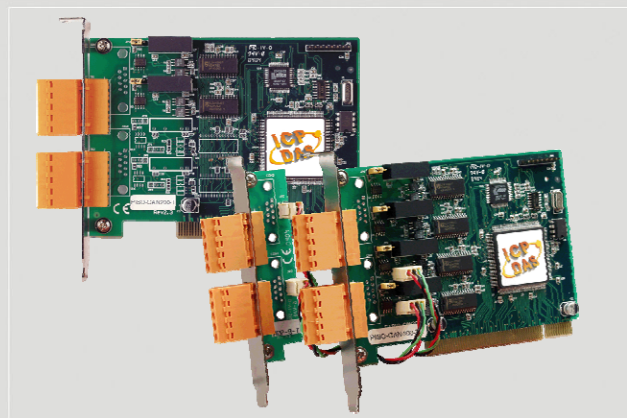


# DeviceNet Series Products

## DeviceNet Library for PISO-CAN200/400-D/T



*PISO-CAN200/400-D*



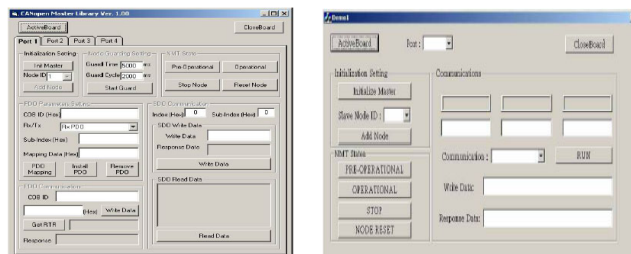
*PISO-CAN200/400-T*

In order to apply the DeviceNet protocol on the PISO-CAN/200/400 easily, we provides the DeviceNet application Tools, which are DeviceNet library and DeviceNet diagnosis application tool. If users want to develop an industrial application with DeviceNet protocol, the DeviceNet library is very helpful to be applied with the PISO-CAN200/400 as the DeviceNet devices with the features of DeviceNet protocol. Besides, if the monitor and diagnosis of DeviceNet message on the CAN network is considered, the DeviceNet diagnostic application tool can be used to achieve this purpose..

### Features

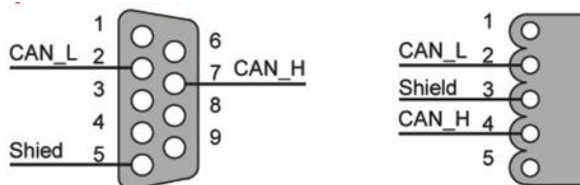
- DeviceNet Version: Volume I & II, Release 2.0
- Programmable Master MAC ID and Baud Rate.
- Baud Rate: 125K, 250K, 500K
- Support Group 2 and UCMM connection
- I/O Operating Modes: Poll, Bit-Strobe, Change of State / Cyclic
- I/O Length: 512 Bytes max (Input/Output) per slave
- Slave Node : 63 nodes max
- Support Auto-Search slave device function.
- Support on-line adding and removing devices
- Support Auto-detect Group 2 and UCMM device
- Auto-Reconnect when the connection is broken
- Status LED: RUN, MS, NS

### Demos Features



These demos can help users to develop the DeviceNet application with the library easily.

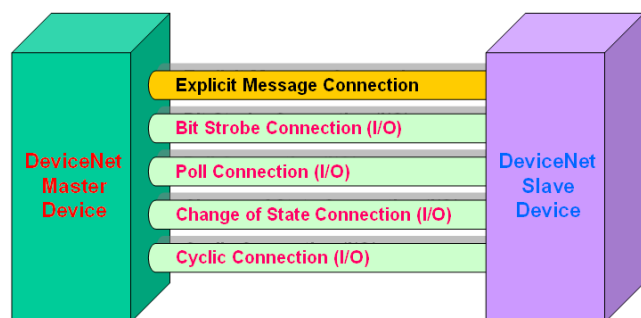
### Pin Assignments



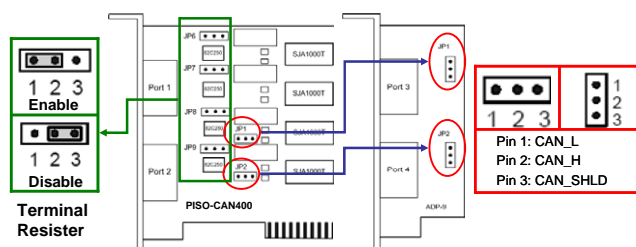
9-pin D-sub male connector

5-pin Screw terminal connector

### DeviceNet Messaging



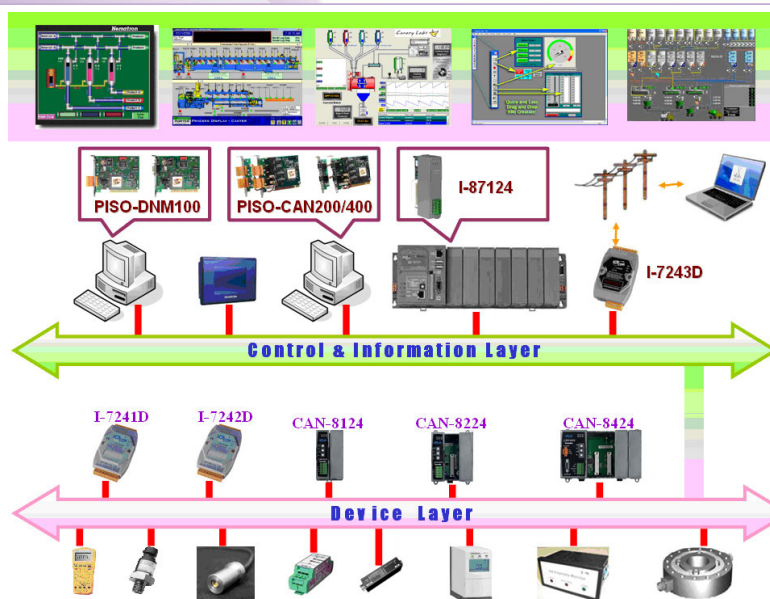
### Establish Connection Flowchart



## Hardware Specifications

Item	PISO-CAN200-D/T	PISO-CAN400-D/T
CAN port	2 independent CAN ports	4 independent CAN ports
Bus Type	33MHz 32bit 5V PCI bus (V2.1) plug and play.	
CAN Controller	Phillips SJA1000 CAN Controller with 16MHz	
CAN Transceiver	Phillips 82C250/251 CAN Transceiver	
CAN Interface	ISO/IS 11898-2, 5-pin screw terminal connector or 9-pin D-sub connector	
Signal Support	CAN_H: CAN high bus line, CAN_L: CAN low bus line	
CAN specific	Compatible with CAN specification 2.0 parts A and B.	
Transfer Rate	Programmable transfer rate up to 1 Mbps	
Terminal Resister	120Ω terminal resister selected by switch	
Driver Support	Windows 98/ME/NT/2K/XP	
Isolated	2500Vrms on CAN side	
Power Consumption	+ 5V@ 250 mA	+ 5V@ 300 mA
Operating Temp.	0°C to 60°C	
Storage Temp.	-20°C to 80°C	
Humidity	0~90% non-condensing	
Dimensions	130mm x 110mm (W x H)	

## Application



## Ordering Information

<b>PISO-CAN200-D</b>	2-Port Isolated Protection CAN Communication Board with 9-pin D-sub connector.
<b>PISO-CAN200-T</b>	2-Port Isolated Protection CAN Communication Board with 5-pin screw terminal connector.
<b>PISO-CAN400-D</b>	This product includes a 2-port isolated protection CAN card and 2-port ADP-9-D (expansion daughter board). The connector of each CAN port is 9-pin D-sub connector.
<b>PISO-CAN400-T</b>	This product includes a 2-port isolated protection CAN card and 2-port ADP-9-T (expansion daughter board). The connector of each CAN port is 5-pin screwed terminal connector.

<b>ADP-9-D</b>	2-port CAN expansion daughter board with D-sub 9-pin connectors.
<b>ADP-9-T</b>	2-port CAN expansion daughter board with screwed terminal connectors.