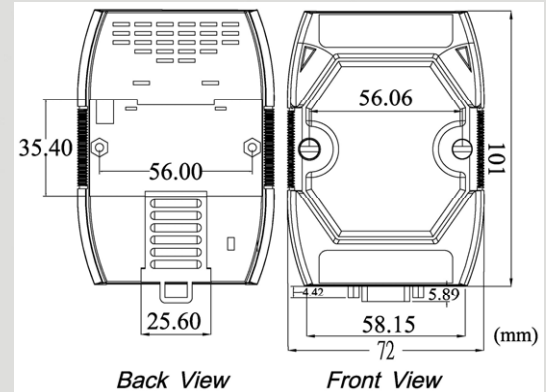




## Intelligent USB to CAN Converter



**I-7565**



**Dimensions**

The I-7565 is a cost-effective device for coupling the CAN-bus to the PC using the standard USB interface. Nowadays the interface is present in every new PC and is supported by the MS-Windows 98, Me, 2000, XP and Linux operating systems. If you establish the connection between the I-7565 and the PC during the runtime of the computer, the PC automatically loads the relevant device driver (hot plug & play). The PC can be the CAN host, monitor or HMI to access/control the CAN device through the CAN network by using the I-7565 converter. This module let you to communicate with CAN devices easily from PC with USB interface.

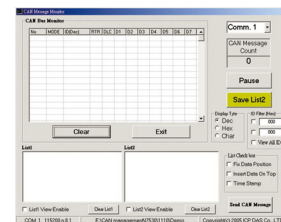
### Features

- Microprocessor inside with 20MHz
- RoHs Design
- Fully compliant with USB 1.1/2.0(Full Speed)
- Fully compatible with the ISO 11898-2 standard
- No external power supply is required as I-7565 takes it's power from the USB bus
- 82C250 CAN transceiver
- Transmission speed up to 1M bps for CAN and 921.6K bps for USB
- Support both CAN 2.0A and CAN 2.0B
- Built-in jumper to select 120 ohm terminal resistor
- Power, data flow and error indicator for CAN and USB
- Watchdog inside
- Windows 98/ME/2000/XP/Linux drivers support

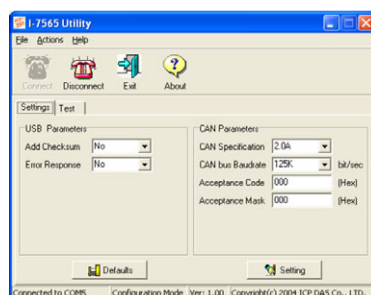
- CAN bus Baud rate configuration
- CAN acceptance filter configuration
- CAN 2.0A or 2.0B specific selection
- Error code response selection
- Easy tool to transmit / receive CAN messages

### CAN Monitor & Data log Tools

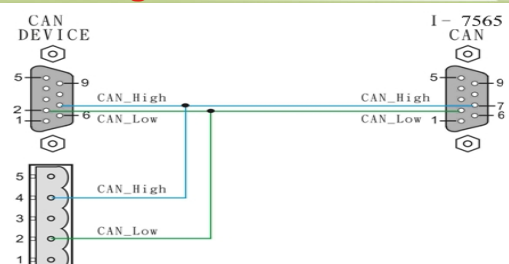
- Show CAN messages by hex or decimal format
- CAN messages with time stamp
- Easy-to-use data logger for the diagnosis of CAN Networks and recording of process data.
- Send the defined CAN messages manually or cyclicly



### Utility Features



### Wire Assignments

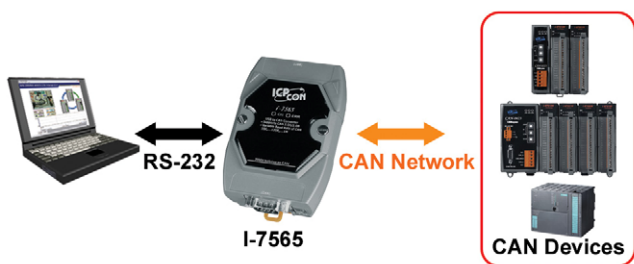




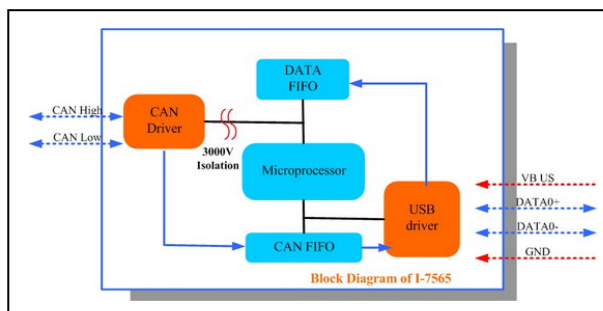
## Hardware Specifications

Item	I-7565
CAN Controller	Microprocessor inside with 20MHz
CAN Port Channels	1
CAN Transceiver	Philips 82C250
CAN Connector	ISO/IS 11898-2, 9-pin D-sub connector
CAN Baud Rate	10K, 20K, 50K, 100K, 125K, 250K, 500K, 800K and 1Mbps
Isolation	3000 Vrms on the CAN side
Terminator Resistor	Selectable 120Ω terminator resistor by jumper
Support Protocol	CAN 2.0A/2.0B
Pinouts	C.I.A. DS-102 (CAN_H = 7, CAN_L = 2, GND = 3)
Receive Buffer	1000 data frames
<b>USB Interface</b>	
Connector	USB Type B
Baud Rate	921.6K bps fixed
Compatibility	USB 1.1 and 2.0 standard
Receive Buffer	900 data frames
<b>General</b>	
Power Consumption	1.5W
LEDs	ON LED: Power and Data Flow; ERR LED: Error
<b>Environment</b>	
Operating Temp.	-25°C to 75°C
Storage Temp.	-40°C to 80°C
Humidity	5~95% non-condensing
Dimensions	108mm x 72mm x 35mm (H x W x D)

## Application



## Block Diagram



## Ordering Information

<b>I-7565 CR</b>	Intelligent USB to CAN Converter (RoHS)
------------------	---