

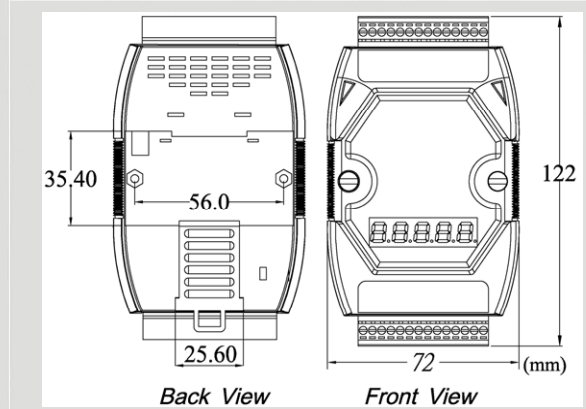


DeviceNet Series Products

DeviceNet Slave / DCON Master Gateway



I-7241D



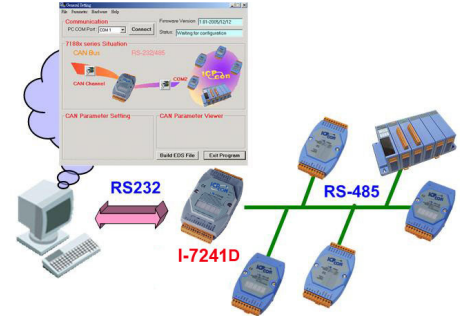
Dimensions

The I-7241D is one of CAN bus products in ICP DAS. The device offers the communication gateway between DeviceNet and DCON protocol. DCON protocol is the communication protocol of I-7K and I-87K series IO modules of ICP DAS. And the I-7241D can be a DeviceNet slave device in CAN bus for DeviceNet network. It is a Group 2 Only Slave device, and supports “Predefined Master/slave Connection Set In addition, we also provide the utility software for users to configure the device parameters and build EDS file for the DeviceNet slave device. Users can easily apply I-7K and I-87K IO modules in DeviceNet applications with the I-7241D

Features

- DeviceNet Version: Volume I & II, Release 2.0
- NMT: Slave
- Support Predefined Master/slave Connection Set
- Dynamic Assembly Objects Mapping
- Support Offline Connection Set, Device Heartbeat message and Device Shutdown message
- Provide Assembly object
- Dynamic Product EDS File
- I/O operating modes: Polling, Bit-Strobe, Change of State/Cyclic
- Support max 15 I-7K/I-87K IO modules
- Provide friendly Utility to configure
- Baud Rate: 125Kb, 250Kb, 500Kb
- On-line change baud rate and MAC ID of CAN
- 7-segment LED to show operation mode, MAC ID, baud rate and error code

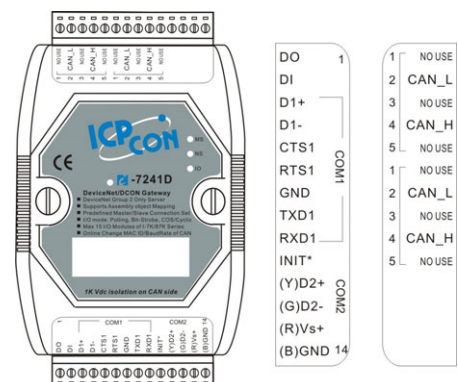
Utility Features



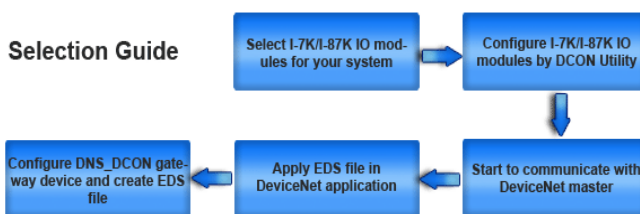
DCON (I-7000/I-87K Series)

- Support auto-scan I-7K/I-87K modules
- Show Application and Assembly Objects configuration
- Support IO connection path setting
- Support EDS file creating

Pin Assignments



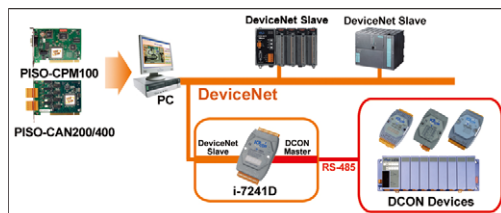
Design Flowchart



Hardware Specifications

Item	I-7241D
CPU	80188, 40MHz
Flash	512K bytes
SRAM	512K bytes
EEROM	2048 Bytes (8 block, each block contains 256byte) Data retention > 100 years; 1,000,000 erase/write cycles
NVRAM	31 bytes
Real Time Clock	16 bit
Watch Dog Timer	CPU Built-in
COM1	RS232: TXD,RXD,RTS,CTS,GND
COM2	RS485: D2+, D2-
CAN Controller	Phillips SJA1000T CAN Controller
CAN Transceiver	Phillips 82C250 CAN Transceiver
LED Directors	NS, MS, IO
Display	7-segment LED: 5digit
CAN bus Isolated	2500Vrms on CAN side
Power Requirement	+10VDC to +30VDC
Power Consumption	3 W
Operating Temp.	-25°C to +75°C
Storage Temp	-40°C to +80°C
Relative Humidity	5~90%, non-condensing
Dimensions	122mm x 72mm x 33 mm (H x W x D)

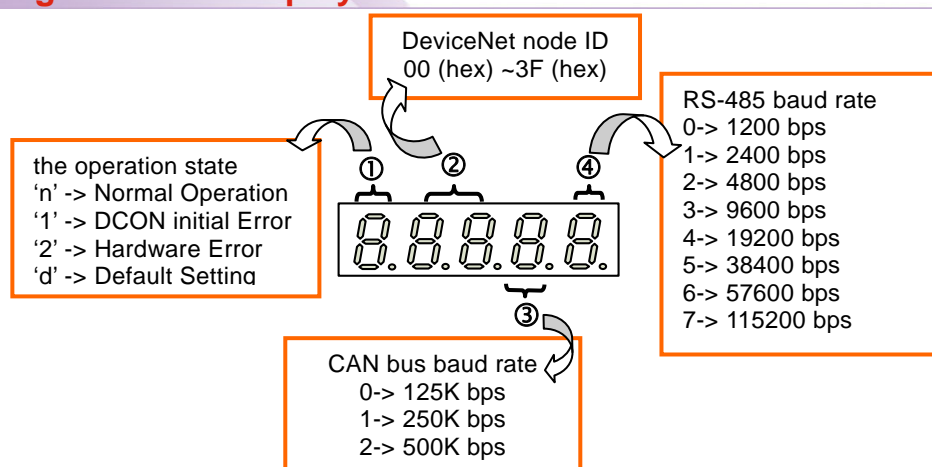
Application



LED Indicators

LED	Description
MS	This LED provides device status. It indicates whether or not the device is operating properly.
NS	This LED indicates the status of the communication link.
I/O	This LED provides information of inputs and/or outputs.

5-digit 7-Segment LED Display



Ordering Information

I-7241D	DeviceNet Slave / DCON Master Gateway
I-7241D CR	DeviceNet Slave / DCON Master Gateway (RoHS)