

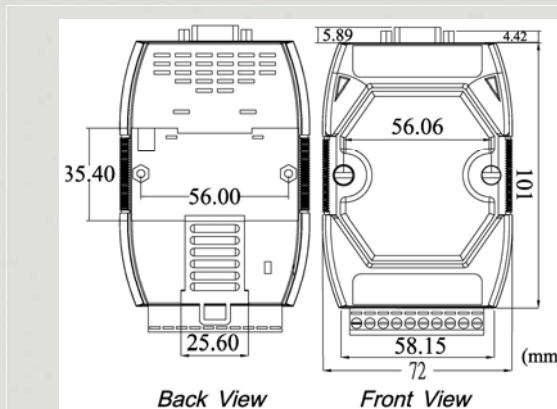


PROFIBUS Series Products

PROFIBUS to Modbus Gateway



GW-7552



Dimensions

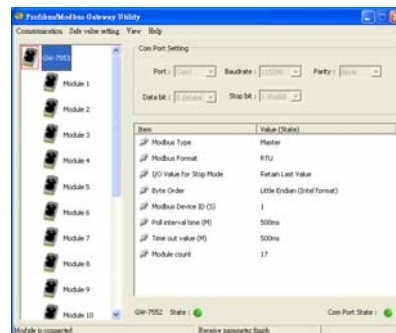
The GW-7552 Gateway is specially designed for the slave device of PROFIBUS DP protocol. It allows the PROFIBUS master to access the Modbus devices. These Modbus devices may be a PLC, a sensor, ICPDAS M-7000 series modules and so forth. In addition, we also provide the utility software for users to configure the GW-7552. By using this module, users can put their Modbus devices into PROFIBUS network very easily.

Features

- Protocol & Hierarchy: DP-V0 Slave
- Detect transmission rate (9.6 to 12000 kbps) automatically
- 128 bytes max input data length
- 130 bytes max output data length
- Support Modbus Master and Slave mode
- Support Modbus RTU and ASCII format
- Address 0~126 set by DIP switch or EEPROM
- Support several kinds of baud rate for COM1 from 2.4 to 115.2 kbps
- Network Isolation Protection: High Speed iCoupler
- 3000VDC isolation protection on PROFIBUS side
- 4KV ESD Protection

Utility Features

- Provide GW-7552 safe value setting
- Display module parameters of the GW-7552
- Show module address configuration of the GW-7552

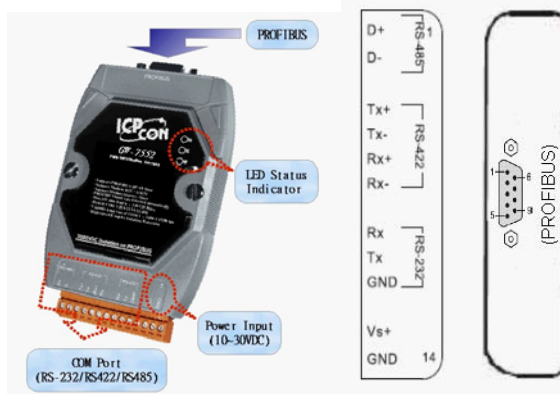


Modbus Support

- Only the following Modbus commands are supported by the gateway.

Code	Name	Description
01	Read Coil Status	Read the ON/OFF status of discrete outputs in the slave
02	Read Input Status	Read the ON/OFF status of discrete inputs in the slave
03	Read Holding Registers	Read the binary contents of holding registers in the slave
04	Read Input Registers	Read the binary contents of input registers in the slave
05	Force Single Coil	Write a single output to either ON or OFF in the slave
06	Preset Single Register	Write an integer value into a single register in the slave
15	Force Multi. Coils	Write each coil in the sequence of coils to either ON or OFF in the slave
16	Preset Multi. Registers	Write a block of contiguous registers in the slave

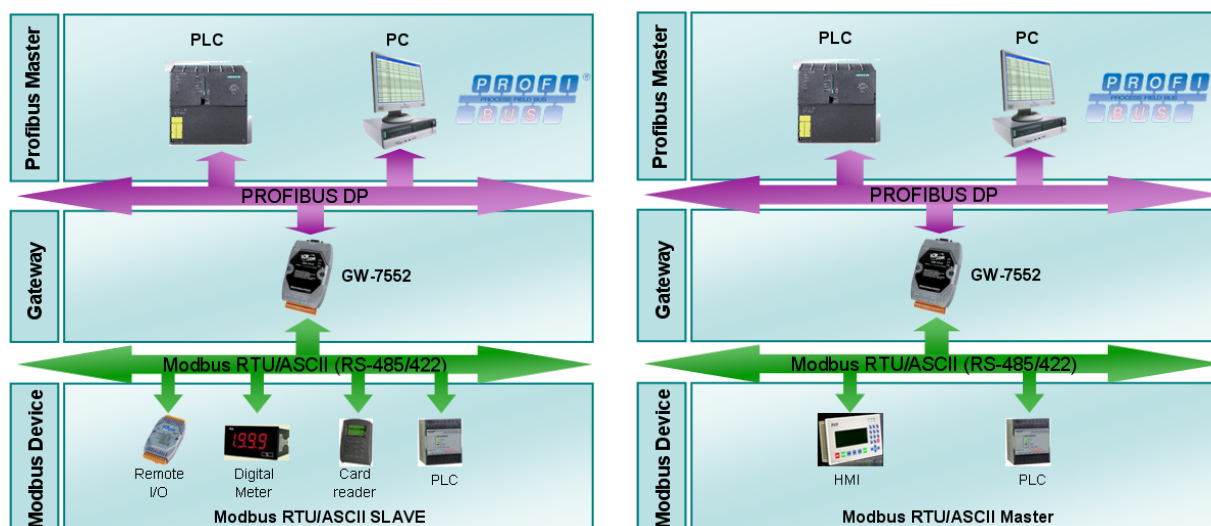
Pin Assignments



Hardware Specifications

Item	GW-7552
CPU	80186, 80MHz
Flash	512K Bytes
SRAM	512K Bytes
EEPROM	16K Bytes
Watch Dog Timer	CPU Built-in
COM 1	RS-232(3 wires)/RS-422/RS-485
Baudrate	Up to 115.2Kbps
PROFIBUS Interface	9-pin D-Sub(Female)
PROFIBUS Controller	Siemens SPC3
PROFIBUS Transceiver	ADI ADM2486 iCoupler Isolated Transceiver
Transmission Rate	Up to 12Mbps
Power Requirement	10V ~ 30V
Power Consumption	2.5W
Operating Temp.	-25°C ~ +75°C
Storage Temp.	-30°C ~ +85°C
Humidity	5% ~ 95%
Dimensions	118mm x 72mm x 33mm (H x W x D)

Applications



Ordering Information

GW-7552 CR	PROFIBUS/Modbus Gateway (RoHS)
-------------------	--------------------------------