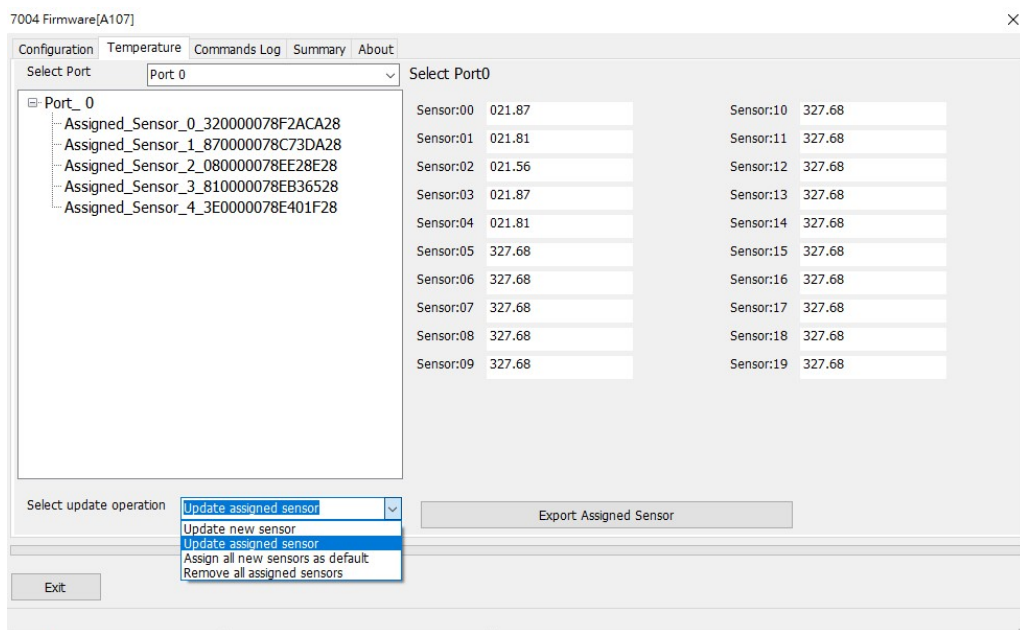


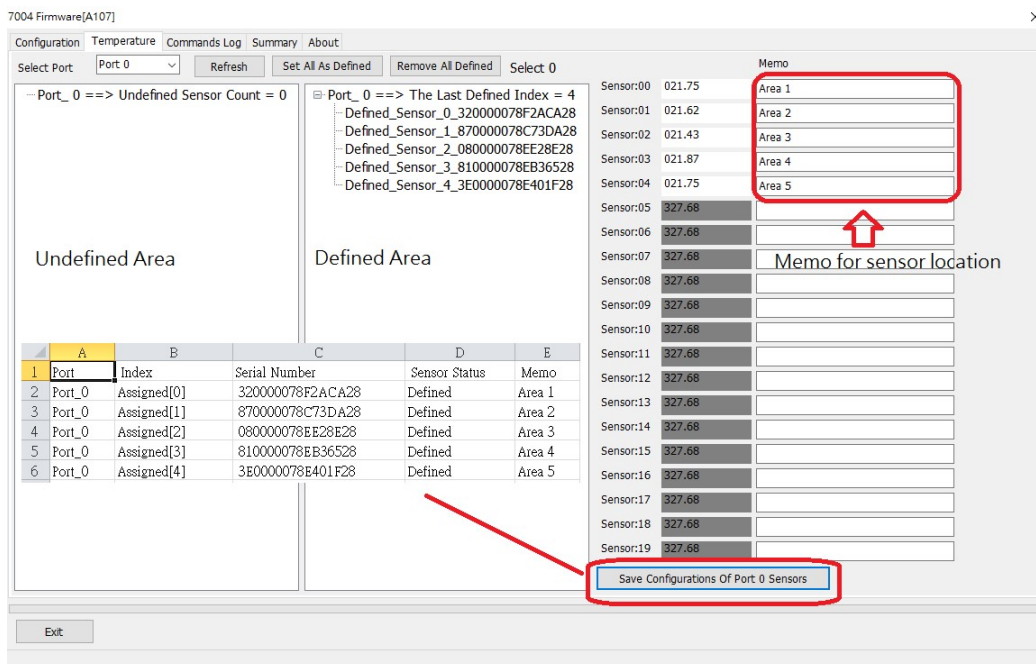
[V4.0.0.3] Release information [2021/3/17]

1. Support DL-1050
2. Added search end and stop search notification mechanism.
3. Fixed the problem that the module name cannot be clicked to enter the setting form after the search.
4. Fixed unable to set modbus module type code
5. Fix M-7084 modbus alarm setting error
6. Fixed the problem that DL, CL series Celsius temperature and Fahrenheit temperature Alarm set values overlap each other
7. Modify M-7004/87004 temperature sensor setting method

The UI design for old version



The new UI design



[V4.0.0.2] Release information [2021/2/4]

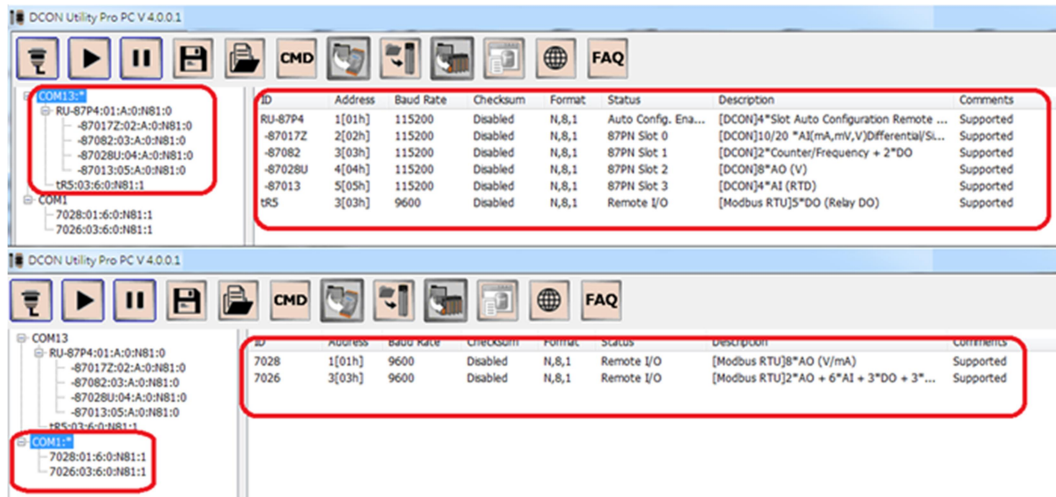
New support module

DL-1020, DL-1021, DL-1022, DL-1023, DL-1050

1. Modified 7005/tTH8 User Define Type Code can only be set to 0x70 type code position in Modbus, and there is no problem with DCON Protocol setting.
2. The current value of LC-102H cannot be updated.
3. Fixed I-7527 searching for only one station number or setting the I-7527 to a format other than N81 will cause a program error.

DCON Utility Pro V4.0 Release News

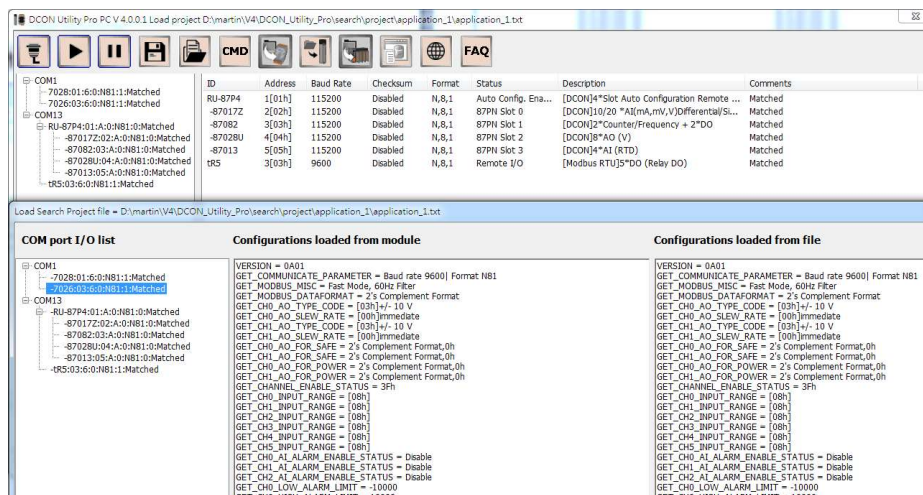
1. Support Multi Ports and Multi I/O modules operation.



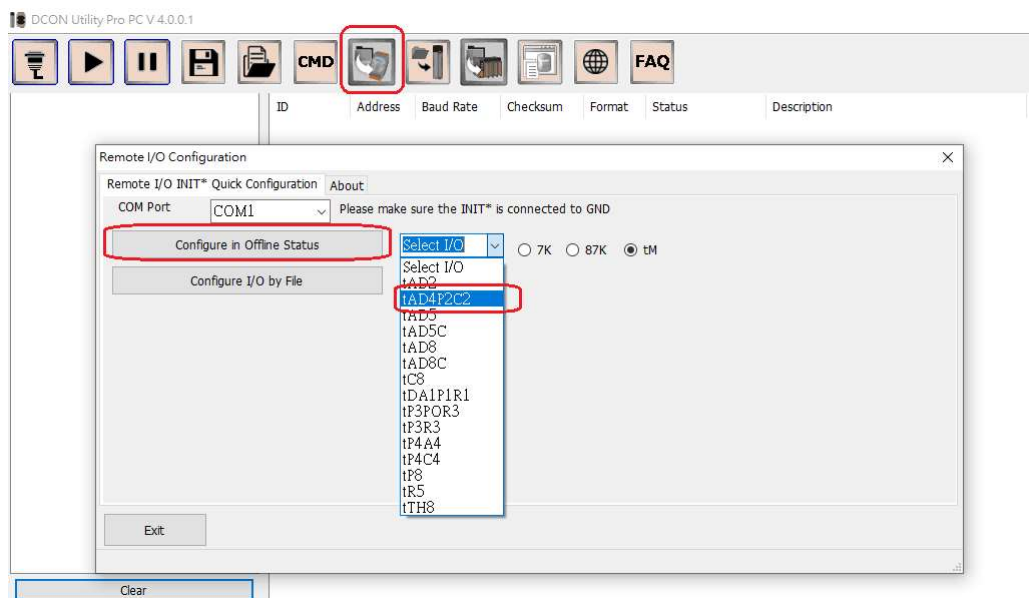
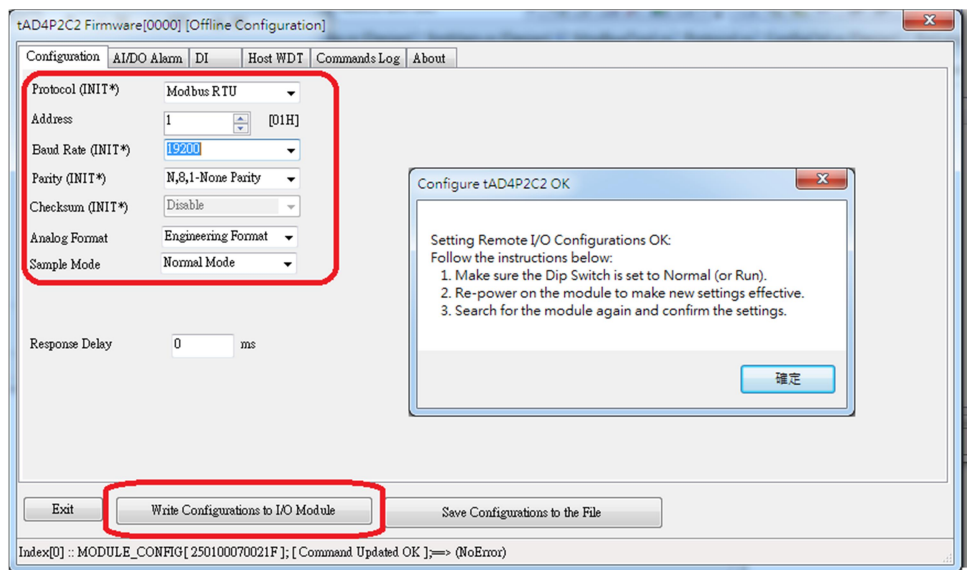
2. After completing all modules' configurations, it can use "Save Project" function



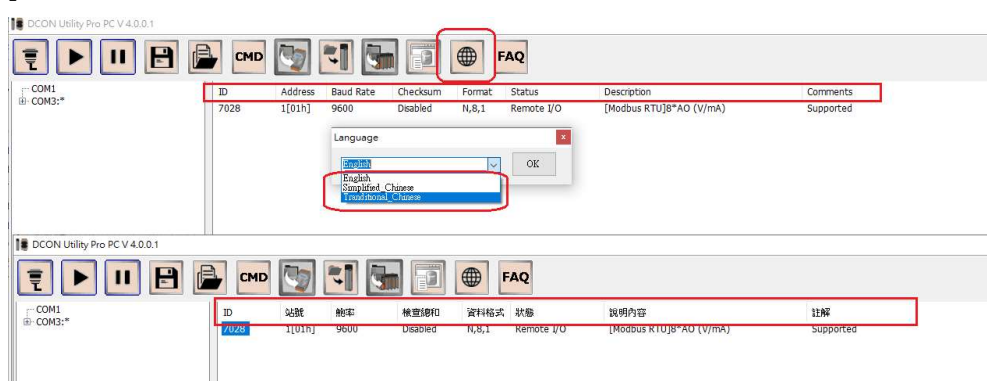
- Store the communication parameters of all modules. If there are many modules on the RS-485 network, the previous search results can be quickly restored.
 - Save detailed module settings to help understand the functions of the module and save paperwork for recording module settings.
3. Load the previous saved project file not only to quickly restore the search results, but also to help find out whether the before and after settings of the module on the RS-485 network are consistent. Provide fast and effective module maintenance and management functions.



4. Provide a quick setting tool, which can edit the module's settings offline. If needs to configure a large number of module with the same settings, it can be quickly completed through INIT* to GND.



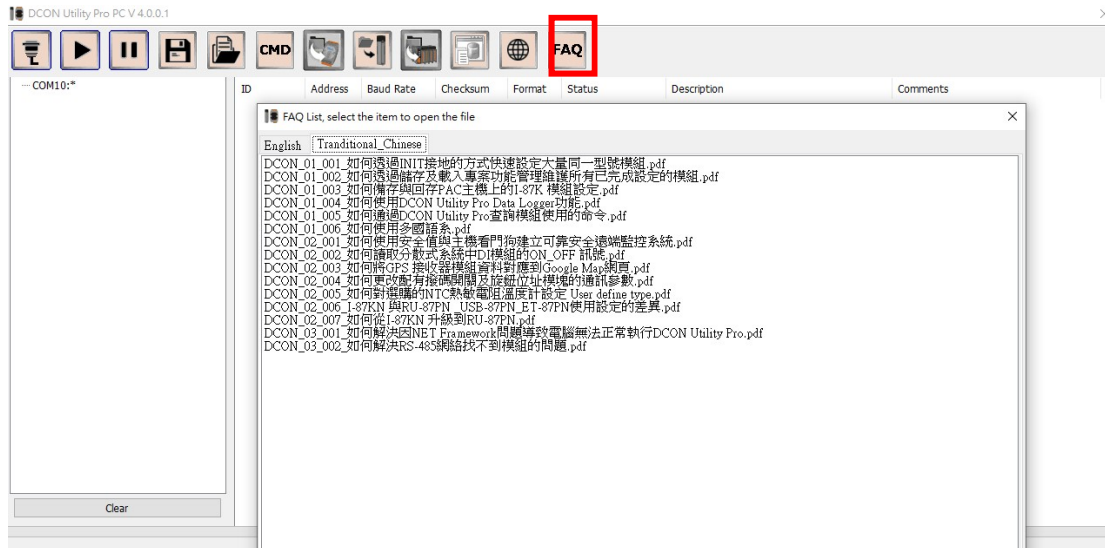
5. Support multiple languages, you can add your own language through a simple procedure.



6. Built-in FAQ

When executing DCON Utility Pro, you can query

- The functional operation guide of DCON Utility Pro.
- Important or special purpose of I/O modules.
- Solutions to common problems encountered in general use.



Support platform

Platform	Supported PAC System
Windows PC (XP,W7,W8,W10) and Windows PAC	XP-9000-IOT,XP-9000-WES7,XP-8000-WES7
Windows CE5 PAC	WP-8000
Windows CE6 PAC	XP-8000-CE6
Windows CE7 PAC	WP-9000-CE7,WP-8000-CE7,WP-5000-CE7

For more information

https://www.icpdas.com/en/product/guide+Software+Utility_Driver+DCON_Utility_Pro

Download

<http://www.icpdas.com/en/download/index.php?root=&model=&kw=DCON%20Utility>