

Packing List

Apart from this guide, the package includes the following items:



WP-5238-CE7



microSD card and
SD/microSD adapter



Screwdriver



Wire
Terminal *16

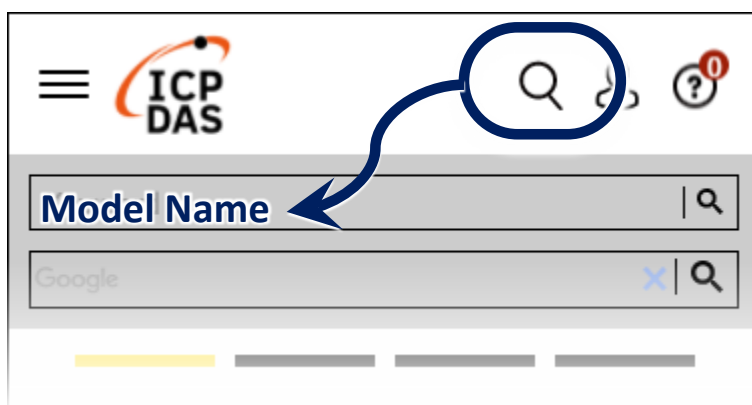
Resources

How to search for drivers, manuals and spec information from ICP DAS website.

- For Desktop Browser



- For Mobile Web

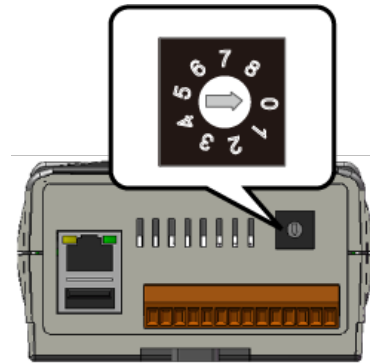


Technical Support

service@icpdas.com
www.icpdas.com

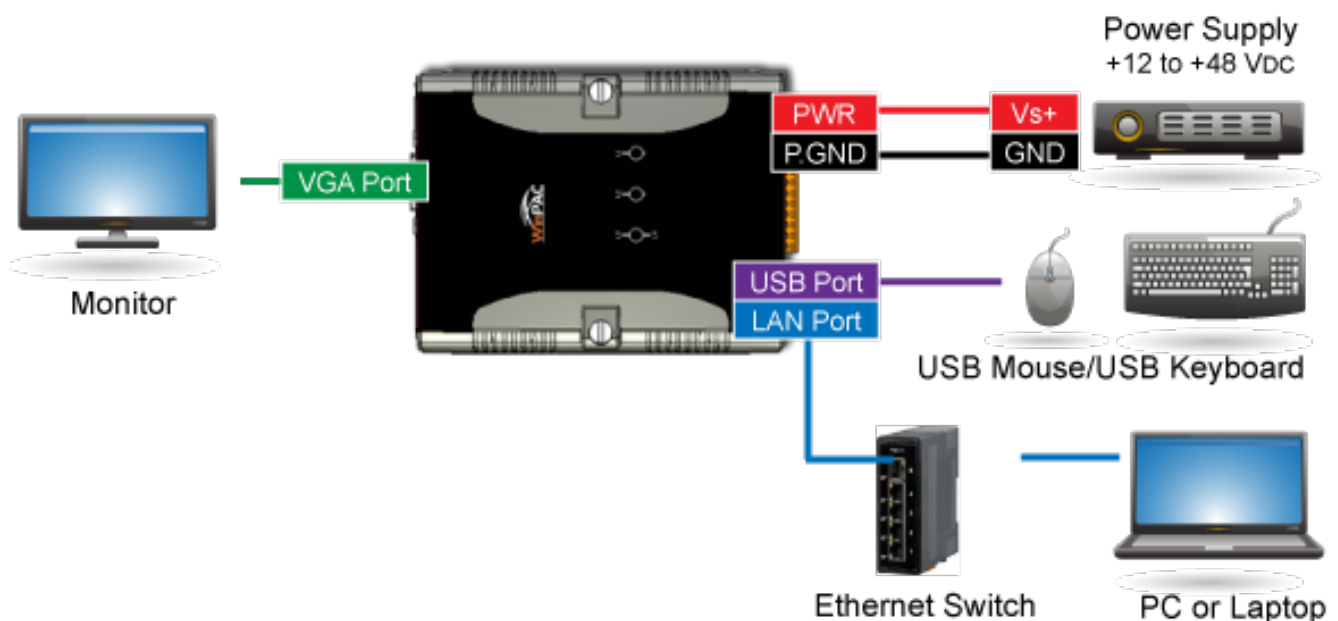
1 Configuring the Boot Mode

Before starting the installation, ensure that the rotary switch is set into the “0” position.



2 Connecting to PC, Monitor and Power Supply

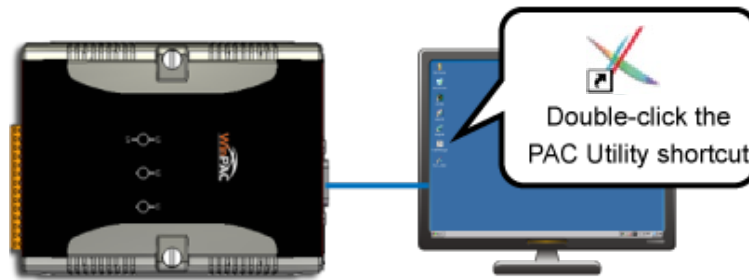
- 1) Connect the mouse or keyboard to the USB port.
- 2) Connect PC to the Ethernet port through an Ethernet Switch.
- 3) Connect the power supply (+12 to +48 V_{DC}) to PWR and GND terminals.
- 4) Connect the monitor to the VGA port.



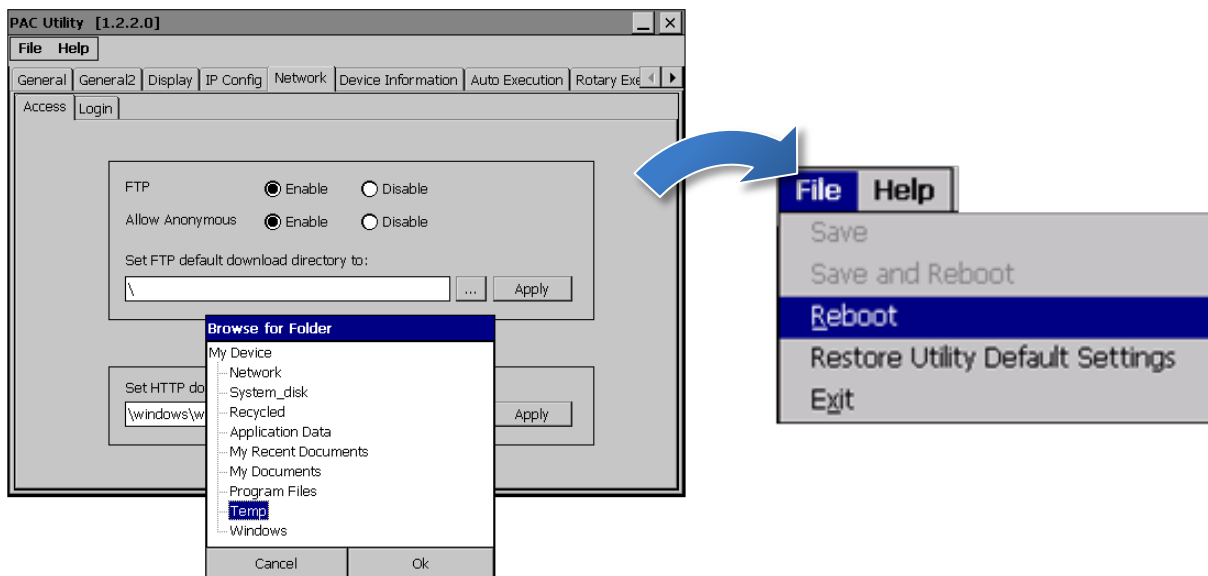
- 5) Turn on the WinPAC.

3 Connecting to PC, Monitor and Power Supply

- 1) Double-click the shortcut of “PAC Utility” on the desktop.

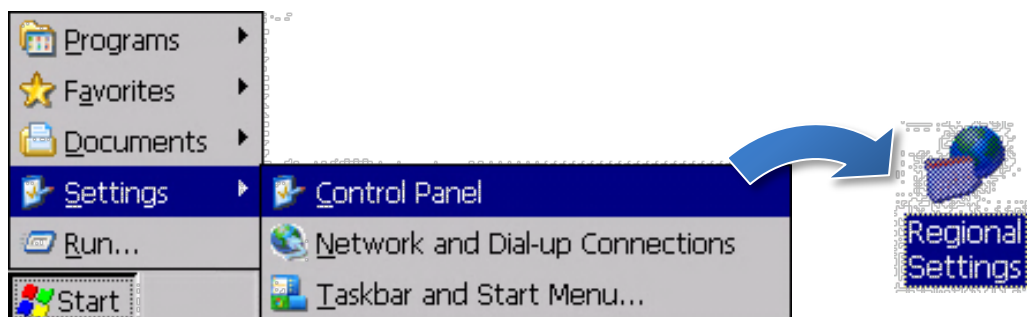


- 2) Configure IP address (DHCP), FTP Server, Auto Execution files..., etc.
- 3) Reboot the PAC to save all changes.

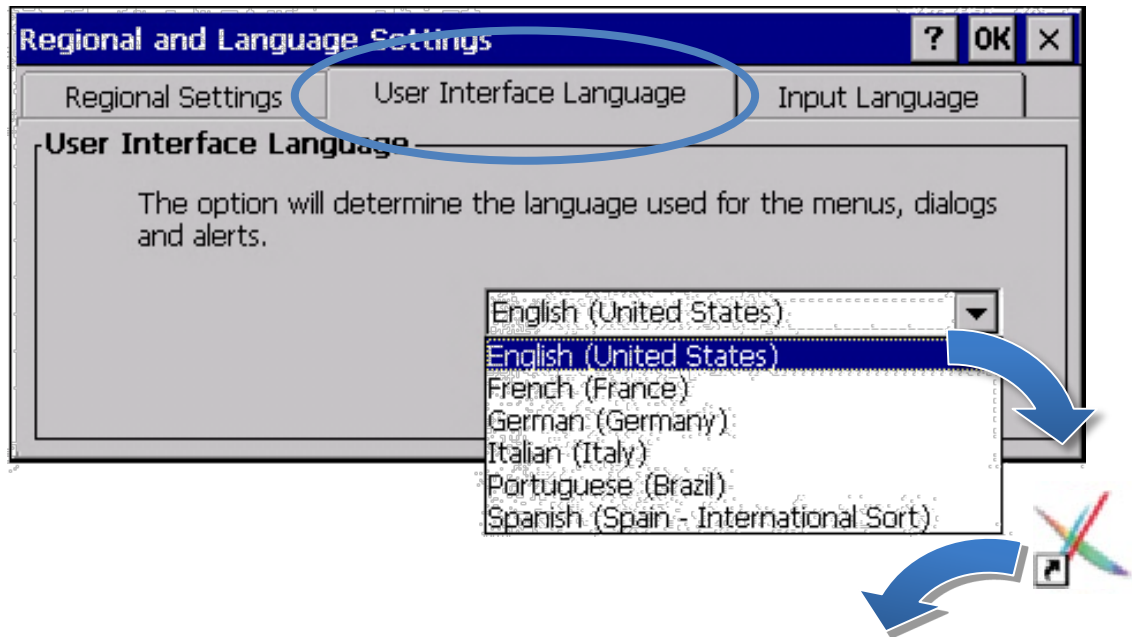


4 Change the Language

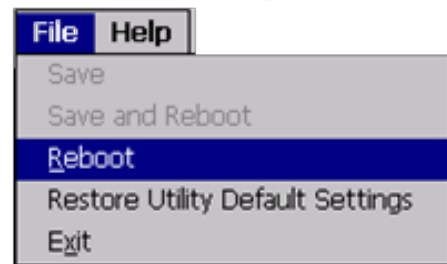
- 1) Select “Start”, choose “Settings”, click “Control Panel”, and then click Regional Settings.



- 2) Click “User Interface Language” tab, drop down to select the language, and click OK.



- 3) Run the PAC Utility, and then reboot the PAC to save all changes.



5 Insert the XV-Board and Wiring

WP-5238-CE7 with function expansion support XV-Board I/O modules.

For more information on how to install the XV-Board, please refer to the “WP-5000-CE7 User Manual – Chapter 2”

https://www.icpdas.com/web/product/download/pac/wince/wp-5231-ce7/document/manual/wp-5000-ce7_user%20manual_en.pdf



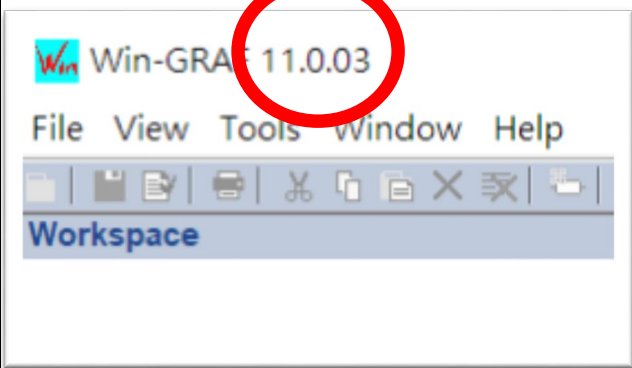
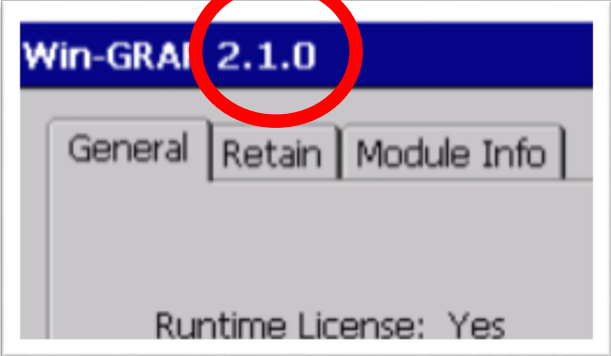
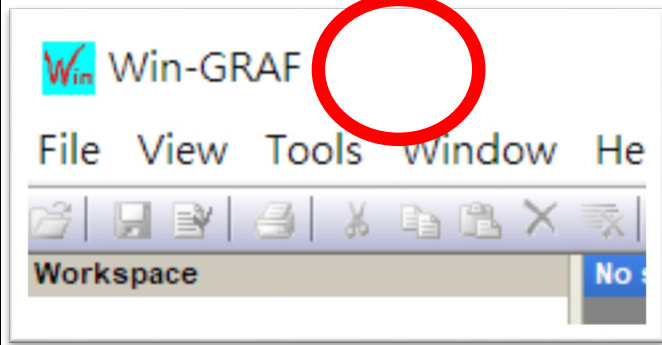
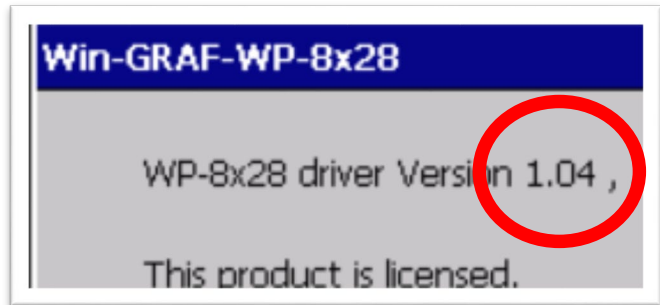
For more details about XV-Board expansion I/O modules, please refer to [XV-board Selection Grid](#)

6 Version Identification

The match version rules for Workbench and Runtime:

- **Workbench 11.0** with **Runtime Ver. 2.xx (factory default)**
- Workbench **1.08** with Runtime Ver. **1.xx**

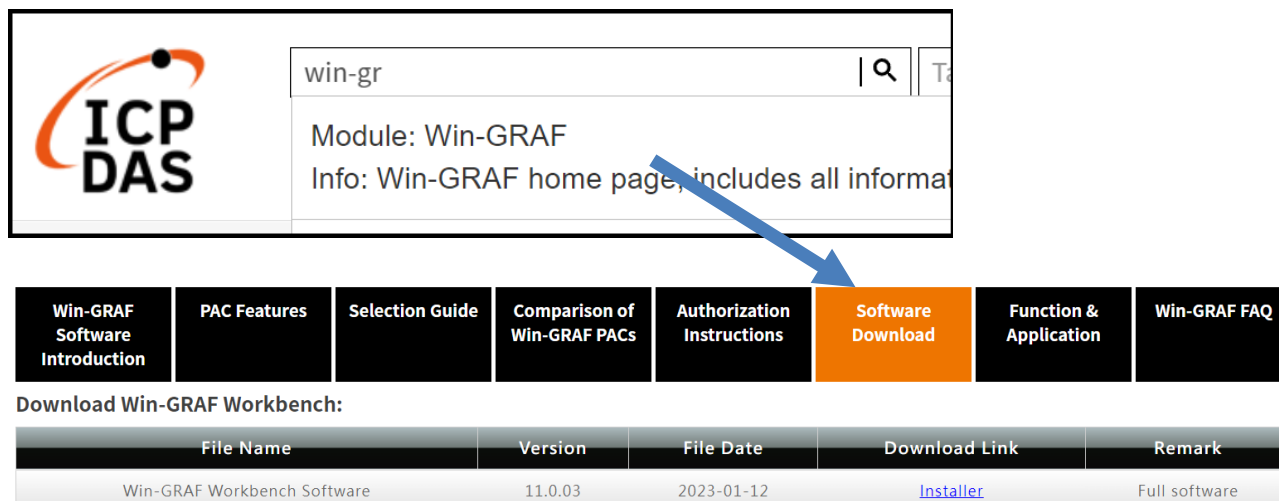
Figure for Version confirmation

Workbench 11.0	Runtime Ver. 2.xx
	
Workbench 1.08	Runtime Ver. 1.xx
※There's no version number on the top-left window. 	

Note: Win-GRAF runtime must be matched with Win-GRAF Workbench V11 (or later)

7 Download the Latest Win-GRAF Workbench V11 Along with the Runtime

Key in “**win-graf**” into Search Box at ICP DAS home page. Find and download Win-GRAF Workbench V11 from the “Software download” Tab.



ICP DAS

win-gr

Module: Win-GRAF
Info: Win-GRAF home page, includes all informa

Win-GRAF Software Introduction | PAC Features | Selection Guide | Comparison of Win-GRAF PACs | Authorization Instructions | **Software Download** | Function & Application | Win-GRAF FAQ

Download Win-GRAF Workbench:

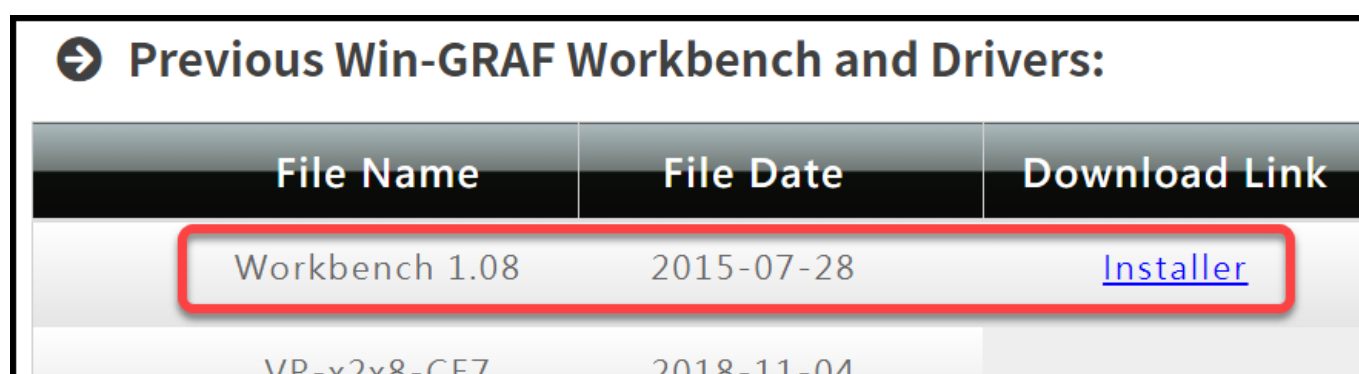
File Name	Version	File Date	Download Link	Remark
Win-GRAF Workbench Software	11.0.03	2023-01-12	Installer	Full software

8 Restore Old Version Win-GRAF Runtime (1.xx)

Win-GRAF runtime (2.xx) does not fully support files compiled by Win-GRAF Workbench version 1.08. If you'd like to restore the old version runtime, please download and restore the runtime of PAC by yourself to **restore it back to the 1.xx version** of Win-GRAF runtime.

The method to restore is as follows:

- 1) Drop down to the end of this Tab and download old version runtime.



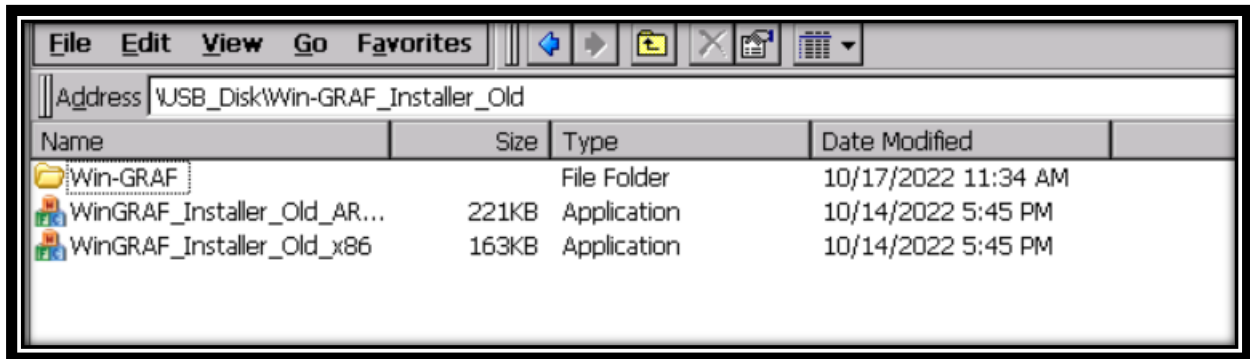
Previous Win-GRAF Workbench and Drivers:

File Name	File Date	Download Link
Workbench 1.08	2015-07-28	Installer
VP-x2x8-CE7	2018-11-04	

2) Copy “**Win-GRAF_Installer_Old.Zip**” file into pen drive or micro SD card, and unzip it.

3) Install the runtime

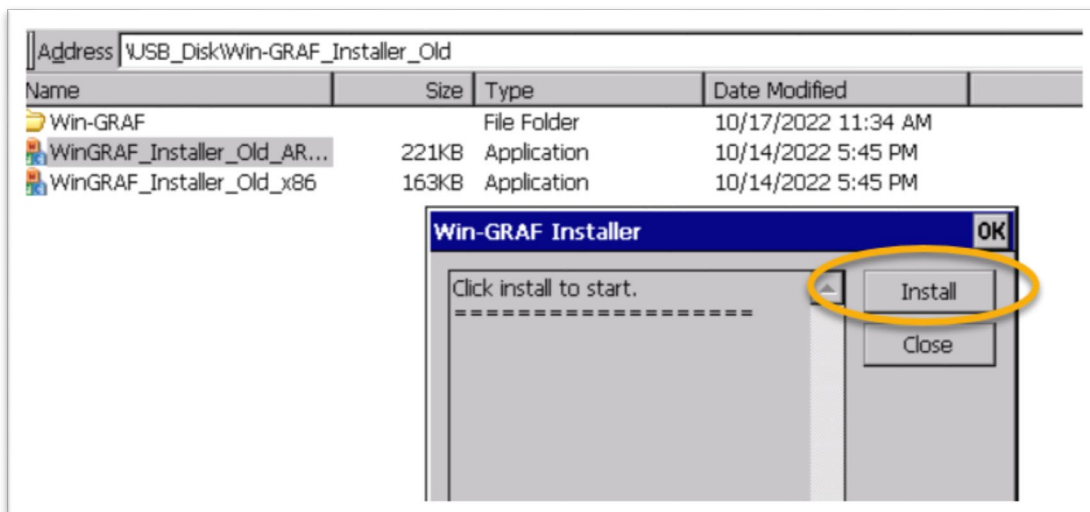
Open the file folder “Win-GRAF_Installer_Old” from pen drive or micro SD card. Capture as below:

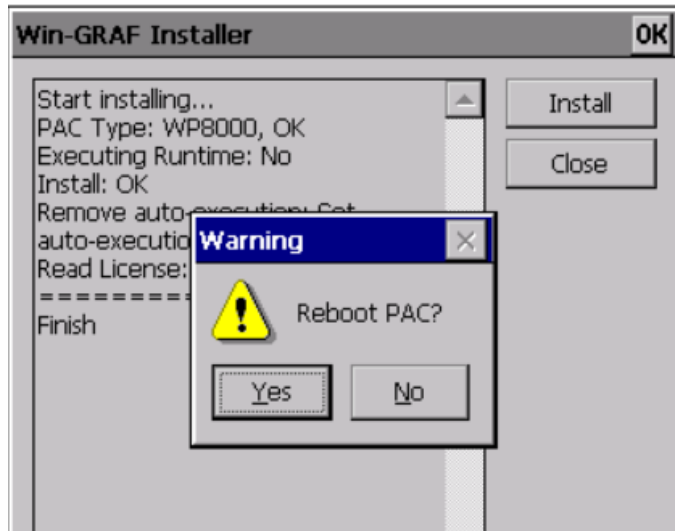
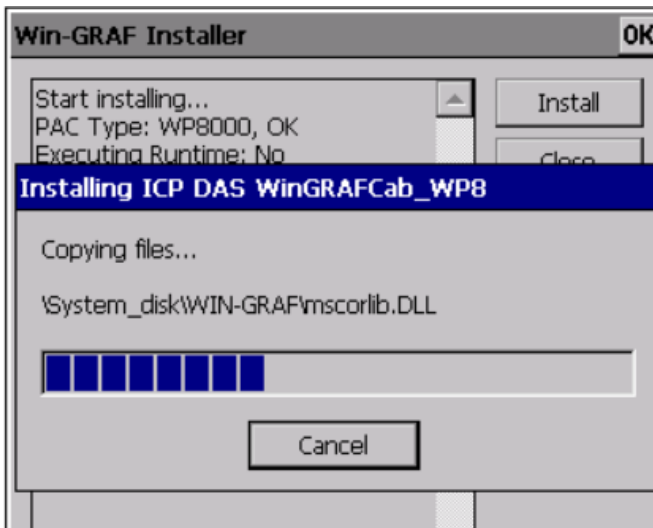


According to different CPUs, different execution files have to be selected:

- **XP-8x28-CE6** PACs: please install “WinGRAF_Installer_Old_x86.exe”
- **WP-9xx8-CE7, WP-8x28-CE7, WP-5238-CE7, VP-x2x8-CE7** PACs: please install “WinGRAF_Installer_Old_ARMv4l.exe”

After the PAC is successfully updated, reboot the PAC.





9 Ethernet Port (Workbench Port) Settings

Win-GRAF runtime (2.xx) or above version can set the Ethernet port.

Keep it as default **1100**. After setting, click “Set” button and reboot Win-GRAF Runtime to save the changes.

