

Packing List

In addition to this guide, the package includes following items:



VP-x208-CE7

VP-2208-CE7(7")

VP-3208-CE7(8.4")

VP-4208-CE7(10.4")

VP-5208-CE7(12.1")

VP-6208-CE7(15")



Stylus Pen



microSD card and
SD/microSD adapter



Screwdriver



Panel clip * 4



M4 x 30L Screw * 4

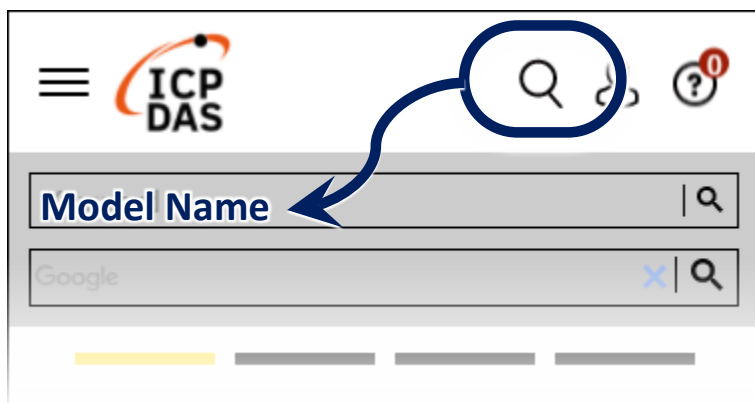
Resources

How to search for drivers, manuals and spec information from ICP DAS website.

• For Desktop Browser



• For Mobile Web



Technical Support

service@icpdas.com

www.icpdas.com

1 Set up ViewPAC

- 1) Ensure that the rotary switch is set to the “0” position.
- 2) Connect the positive terminal (+) of the power supply to the terminal PWR and the negative terminal (-) of the power supply to the P.GND.

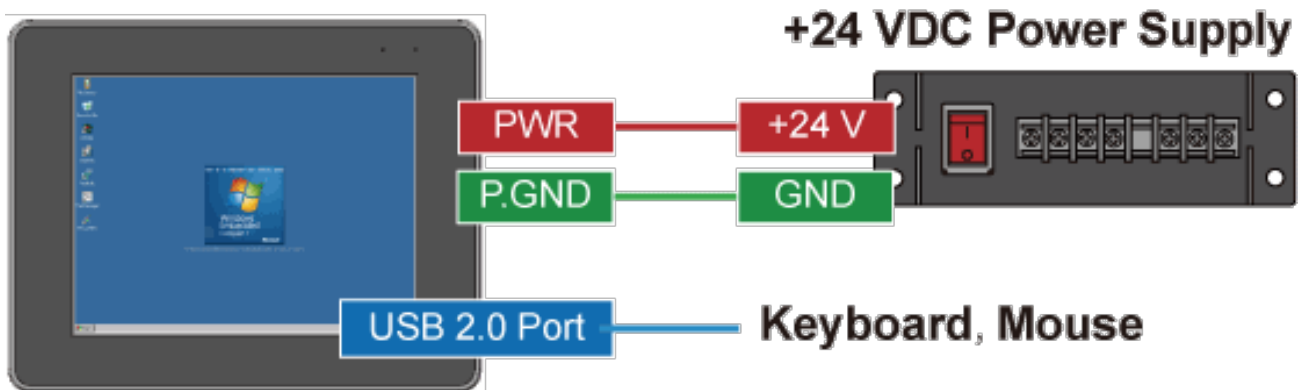


The input range of power supply is +12 to +48 V_{DC}.

- 3) Connect the USB mouse or USB keyboard to the USB port.



The rotary switch must be placed in the “0” position



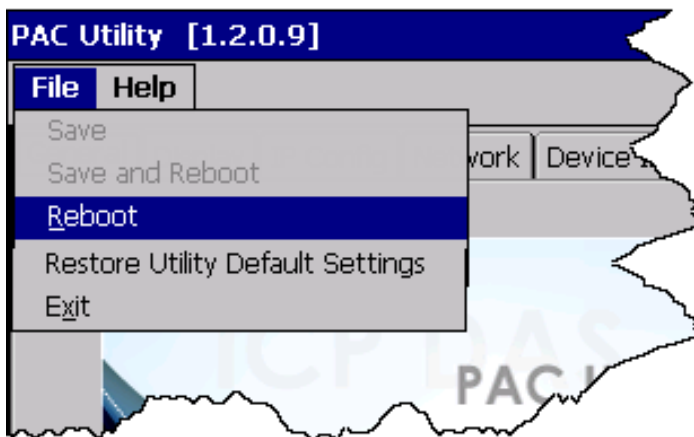
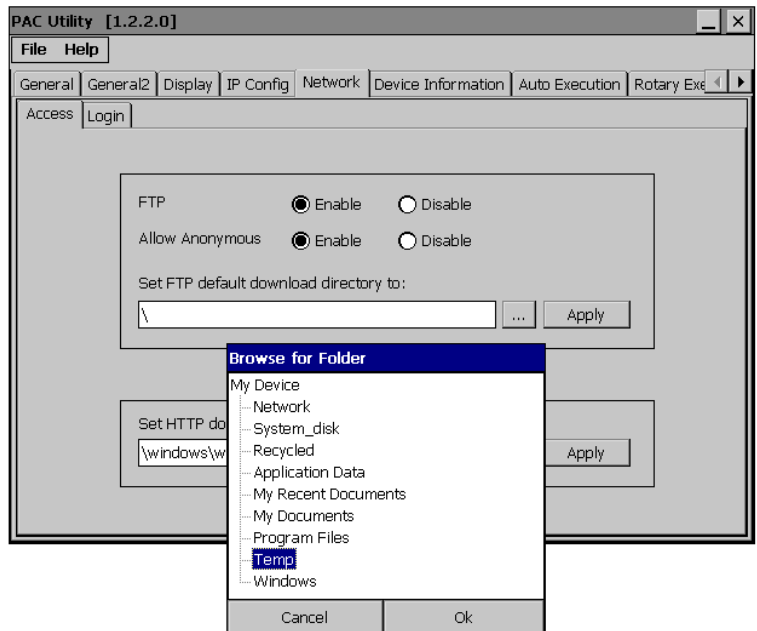
- 4) Turn on the ViewPAC.

2 Use PAC Utility to Manage the ViewPAC

1) Double-click the shortcut of “PAC Utility” on the desktop.



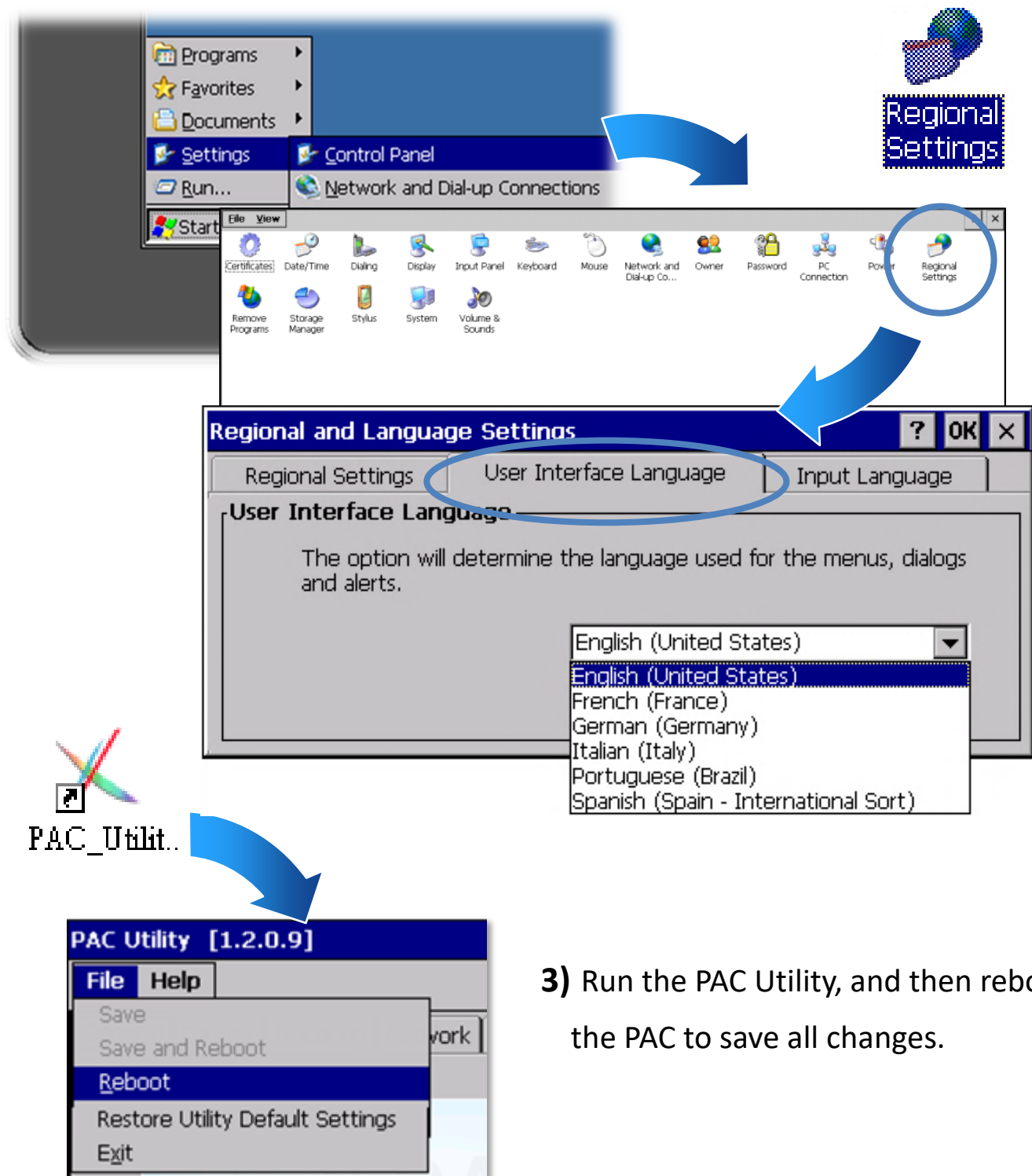
2) Configure IP address (DHCP),
FTP Server, auto execution
files..., etc.



3) Reboot the ViewPAC to save
all changes.

3 Change the Language

- 1) Select "Start", choose "Settings", click "Control Panel", and then click Regional Settings.
- 2) Click "User Interface Language" tab, drop down to select the language, and then click OK.



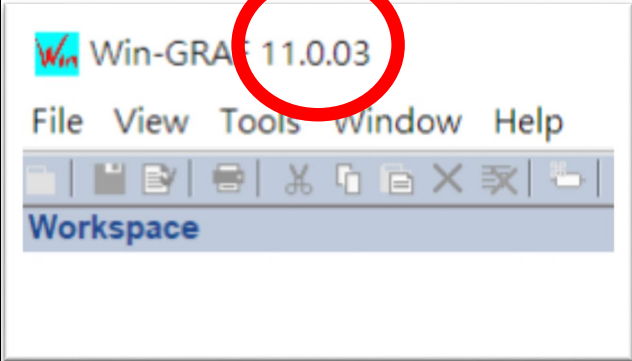
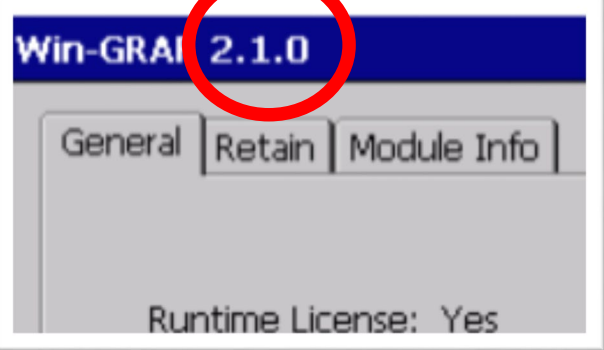
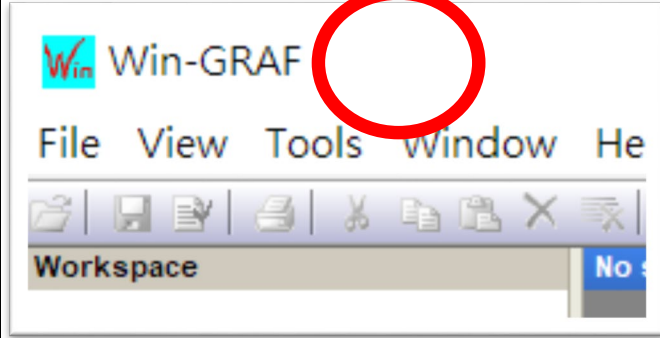
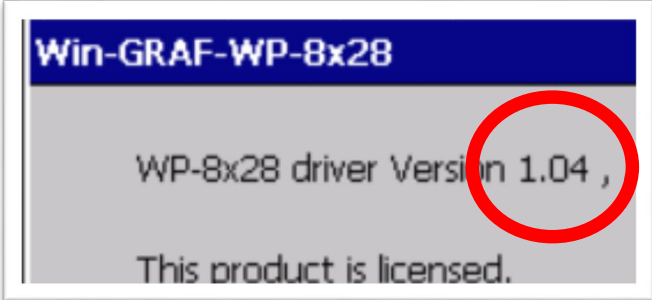
- 3) Run the PAC Utility, and then reboot the PAC to save all changes.

4 Version Identification

The match version rules for Workbench and Runtime:

- **Workbench 11.0** with **Runtime Ver. 2.xx (factory default)**
- Workbench **1.08** with Runtime Ver. **1.xx**

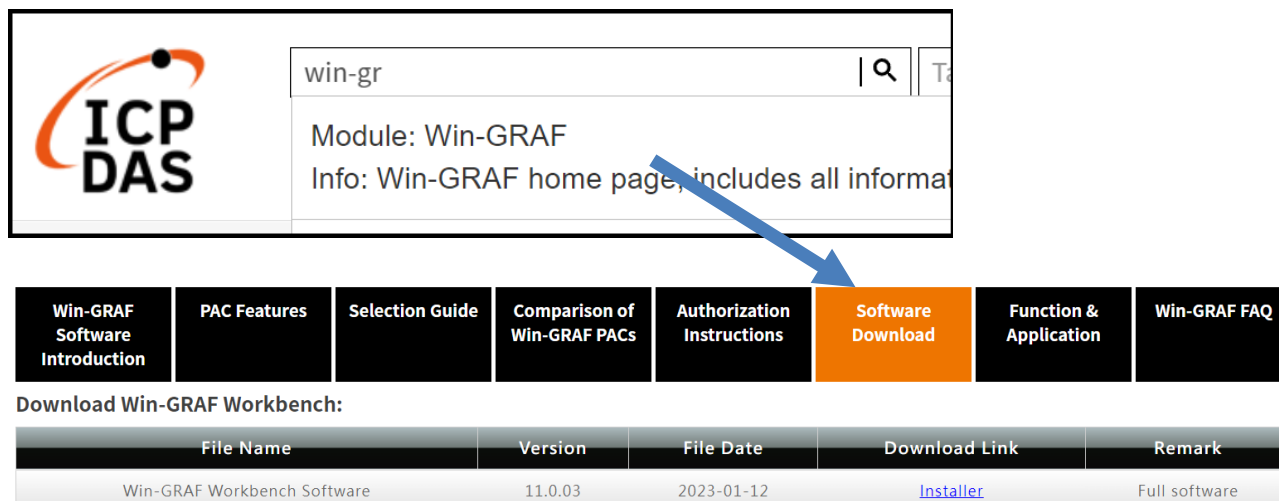
Figure for Version confirmation

Workbench 11.0	Runtime Ver. 2.xx
	
Workbench 1.08	Runtime Ver. 1.xx
※There's no version number on the top-left window. 	

Note: Win-GRAF runtime must be matched with Win-GRAF Workbench V11 (or later)

5 Download the Latest Win-GRAF Workbench V11 Along with the Runtime

Key in “**win-graf**” into Search Box at ICP DAS home page. Find and download Win-GRAF Workbench V11 from the “Software download” Tab.



The screenshot shows the ICP DAS website search results for 'win-graf'. The search bar contains 'win-gr' and a magnifying glass icon. Below the search bar, a dropdown menu displays 'Module: Win-GRAF' and 'Info: Win-GRAF home page, includes all informa'. A blue arrow points from the search results to the 'Software Download' tab in the navigation menu. The navigation menu includes tabs for 'Win-GRAF Software Introduction', 'PAC Features', 'Selection Guide', 'Comparison of Win-GRAF PACs', 'Authorization Instructions', 'Software Download' (highlighted in orange), 'Function & Application', and 'Win-GRAF FAQ'. Below the navigation menu, the text 'Download Win-GRAF Workbench:' is followed by a table with the following data:

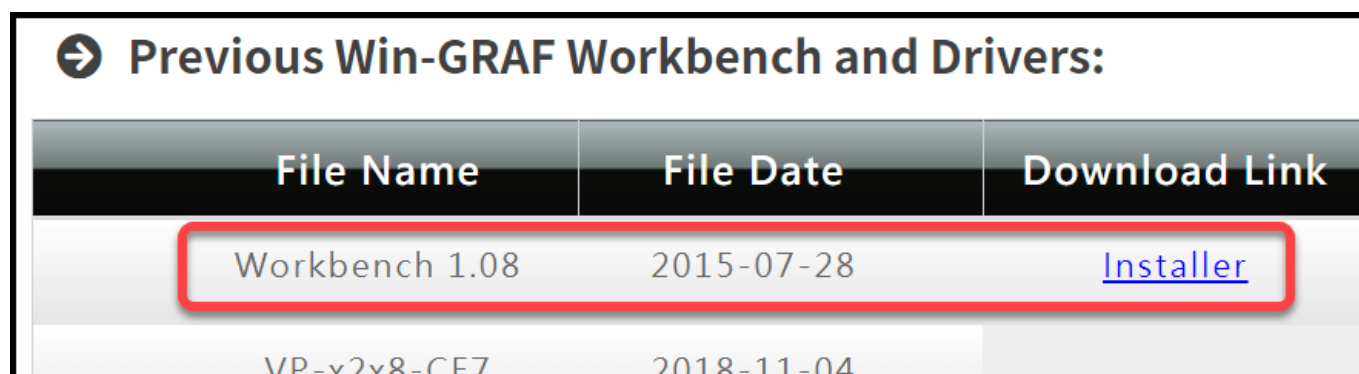
File Name	Version	File Date	Download Link	Remark
Win-GRAF Workbench Software	11.0.03	2023-01-12	Installer	Full software

6 Restore Old Version Win-GRAF Runtime (1.xx)

Win-GRAF runtime (2.xx) does not fully support files compiled by Win-GRAF Workbench version 1.08. If you'd like to restore the old version runtime, please download and restore the runtime of PAC by yourself to **restore it back to the 1.xx version** of Win-GRAF runtime.

The method to restore is as follows:

- 1) Drop down to the end of this Tab and download old version runtime.



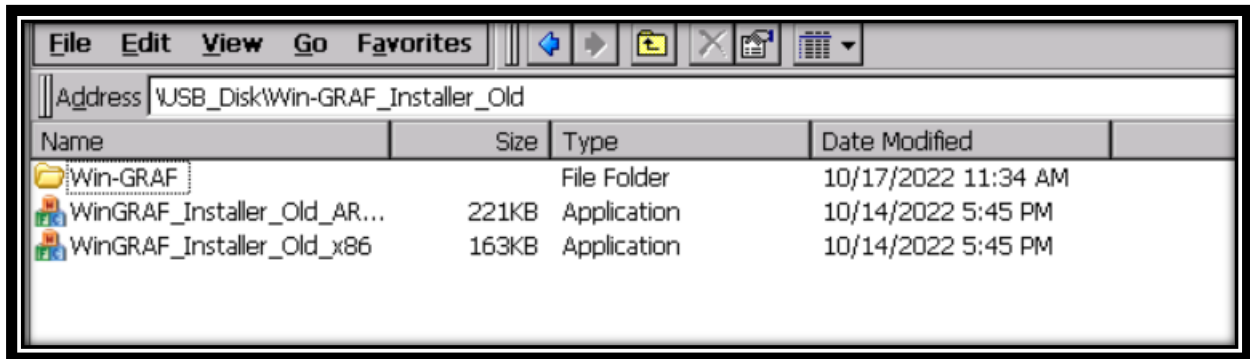
The screenshot shows the 'Previous Win-GRAF Workbench and Drivers' section. It features a table with the following data:

File Name	File Date	Download Link
Workbench 1.08	2015-07-28	Installer
VP-v2x8-CE7	2018-11-04	

2) Copy “**Win-GRAF_Installer_Old.Zip**” file into pen drive or micro SD card, and unzip it.

3) Install the runtime

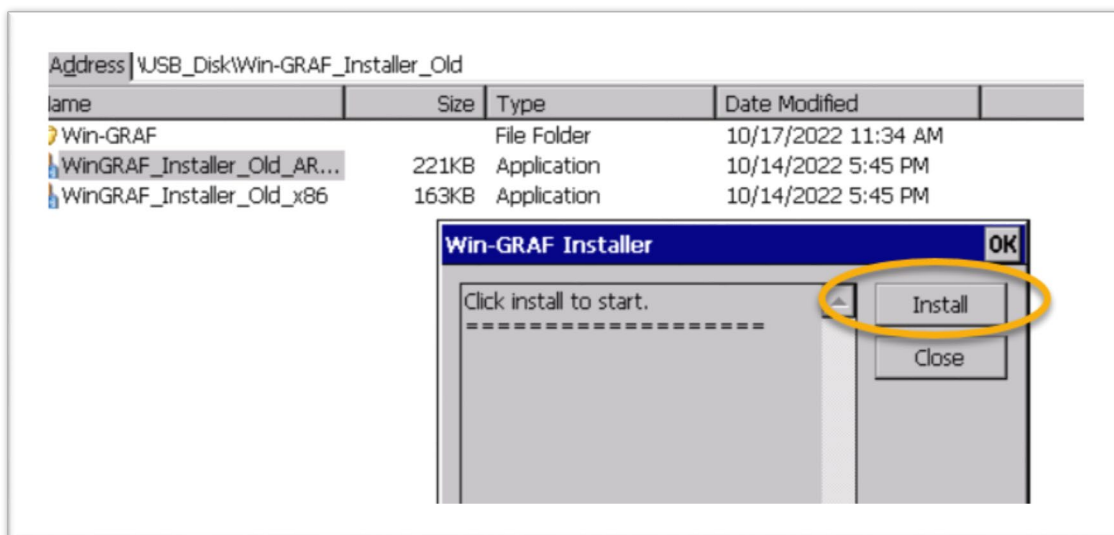
Open the file folder “Win-GRAF_Installer_Old” from pen drive or micro SD card. Capture as below:

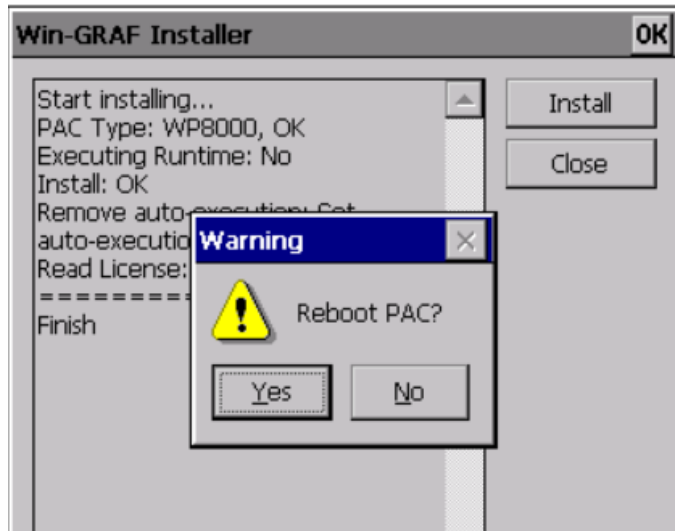
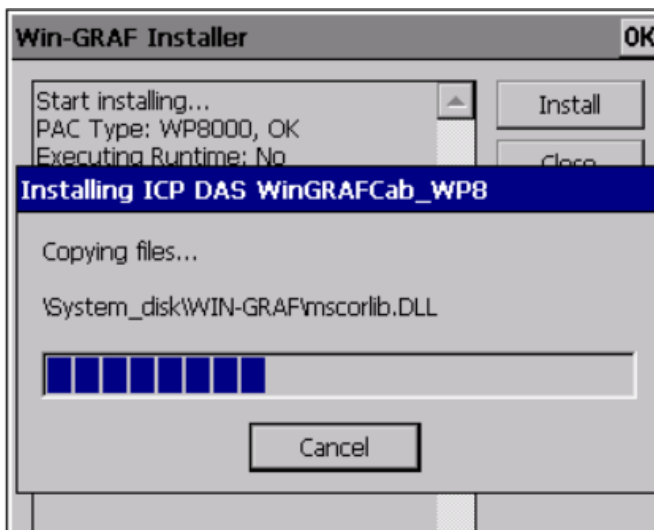


According to different CPUs, different execution files have to be selected:

- **XP-8x28-CE6** PACs: please install “WinGRAF_Installer_Old_x86.exe”
- **WP-9xx8-CE7, WP-8x28-CE7, WP-5238-CE7, VP-x2x8-CE7** PACs: please install “WinGRAF_Installer_Old_ARMv4I.exe”

After the PAC is successfully updated, reboot the PAC.





7 Ethernet Port (Workbench Port) Settings

Win-GRAF runtime (2.xx) or above version can set the Ethernet port.

Keep it as default **1100**. After setting, click “Set” button and reboot Win-GRAF Runtime to save the changes.

