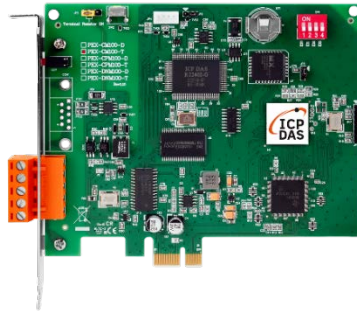


## Packing List

In addition to this guide, the package includes the following items:



PISO-CPM100U-D/T  
Or PEX-CPM100-D/T



Quick Start

## Resources

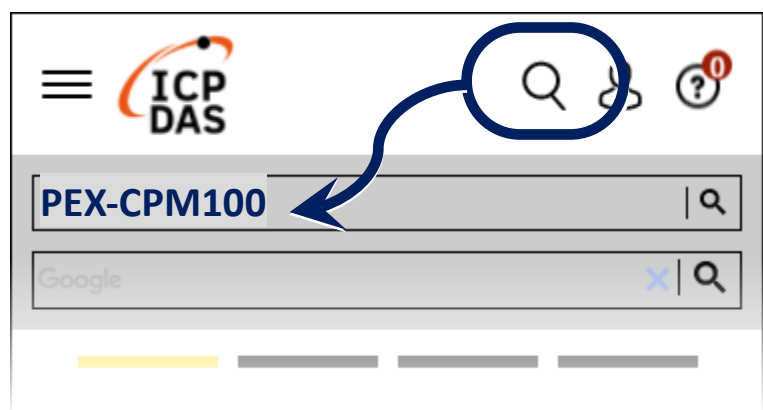
### Technical Support

[service@icpdas.com](mailto:service@icpdas.com)

[www.icpdas.com](http://www.icpdas.com)

How to search for drivers, manuals and spec information on ICP DAS website.

- For Mobile Web



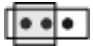

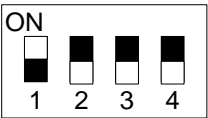
- For Desktop Web



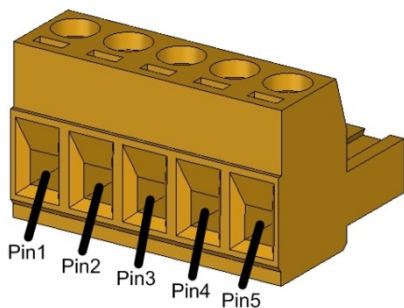
# 1. Jump, Switch and Pin Assignment

## Jump and Switch:

	PISO-CPM100U Rev 1.xx	PISO-CPM100U Rev 2.xx	PEX-CPM100
Debug Port	JP2	JP4	JP4
Flash Protect	JP3	JP3	JP3
Terminal Resistance	JP4	JP5	JP5
Reset Button	SW2	SW2	SW2
Board Switch	SW1	SW1	SW1

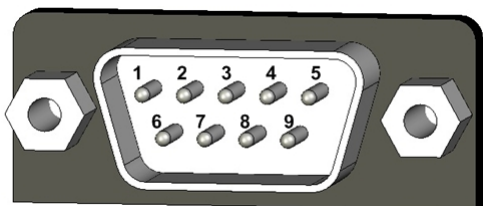
Terminal Resistance ( 120 Ω )	Board Switch ( 0 ~ 15 )
 <b>Enable</b>  <b>Disable</b>	<p>DIP switch</p>  <p>Be careful, the board No. of each CM100s, DNM100s and CPM100s in your PC must be unique.</p>

## Pin Assignment:



5-pin Screw Terminal

Pin	Signal	Description
1	CAN_GND	Ground
2	CAN_H	CAN_H bus line
3	CAN_SHLD	Optional CAN Shield
4	CAN_L	CAN_L bus line
5	N/A	No use




9-pin D-sub Male

Pin	Signal	Description
1	N/A	No use
2	CAN_L	CAN_L bus line
3	CAN_GND	Ground
4	N/A	No use
5	CAN_SHLD	Optional CAN Shield
6	CAN_GND	Ground
7	CAN_H	CAN_H bus line
8	N/A	No use
9	N/A	No use




## 2. Installing Windows Driver

Step1. Setup the Windows driver. The driver is located at:

 HOME > PRODUCTS > Industrial Communication > Fieldbus Communication > CANopen > PISO-CPM100U-D

### PISO-CPM100U-D

1 Port Intelligent CANopen Master Universal PCI Board


Click   

### Driver

	FILE NAME	DESCRIPTION	MODEL	LAST UPDATE
	PISO-CPM100(U) / PCM-CPM100	PISO-CPM100(U) / PCM-CPM100 Driver	PISO-CPM100U-D	2023-10-20




Step2. The default driver installation path is C:\ICPDAS\PISO-CPM100U. Please follow the installation process prompts and click the "Next" button to complete the installation.

For more detailed installation instructions, please refer to the user manual, the user manual path:

 HOME > PRODUCTS > Industrial Communication > Fieldbus Communication > CANopen > PISO-CPM100U-D

### PISO-CPM100U-D

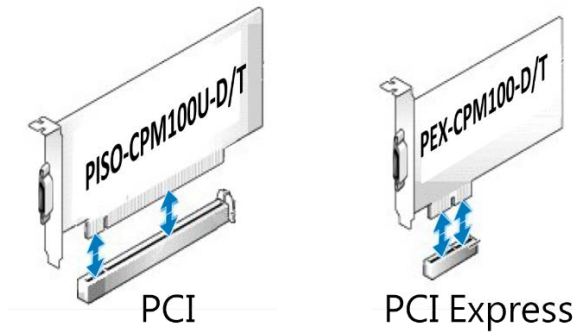
1 Port Intelligent CANopen Master Universal PCI Board

Click   

### User Manual

	FILE NAME	DESCRIPTION	MODEL	LAST UPDATE
	PISO-CPM100(U) / PCM-CPM100	PISO-CPM100(U) / PCM-CPM100 User Manual	PISO-CPM100U-D	2020-04-15

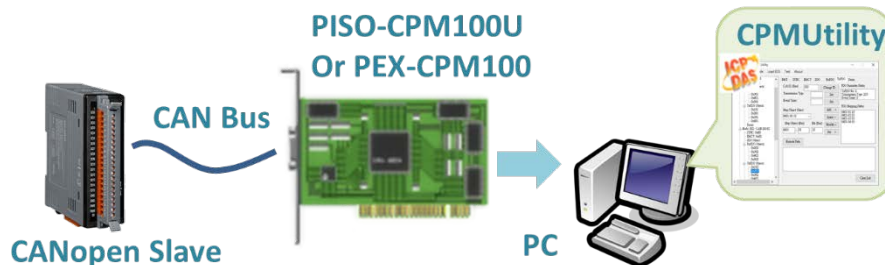
### 3. Installing CPM100 CANopen Board



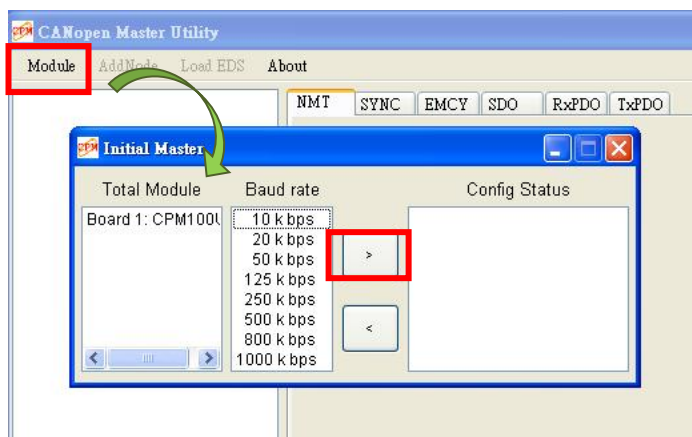
\* PISO-CPM100U is PCI slot  
PEX-CPM100 is PCIe X1 slot

- Step1. Shut down and power off your PC, then remove its' case.
- Step2. Select a suitable slot and insert the CAN card into the slot.
- Step3. Replace the PC case and power on the computer.
- Step4. After the boot is complete, please follow the prompts to complete the driver installation.

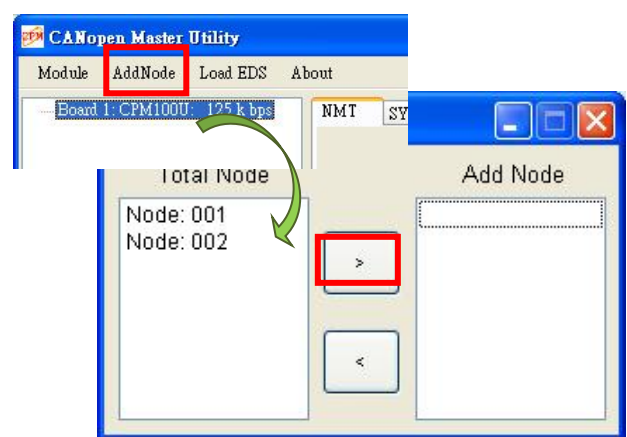
### 4. Wiring and testing



- Step1. Connect the CAN port of the CANopen board to the customer's CAN device and power on.
- Step2. Open CPMUtility.exe located in C:\ICPDAS\PISO-CPM100U.
- Step3. Press the Module button, click on the appropriate CANopen card and baud rate and add a new one.
- Step4. Click AddNode to search for slaves, then select the slaves and add them. After adding the slaves, you can use CPMUtility to control or read the data from them.



Step3. Figure



Step4. Figure