

Packing List

In addition to this guide, the package includes the following items :



I-7530A



CA-0910



Plastic Rail

Resources

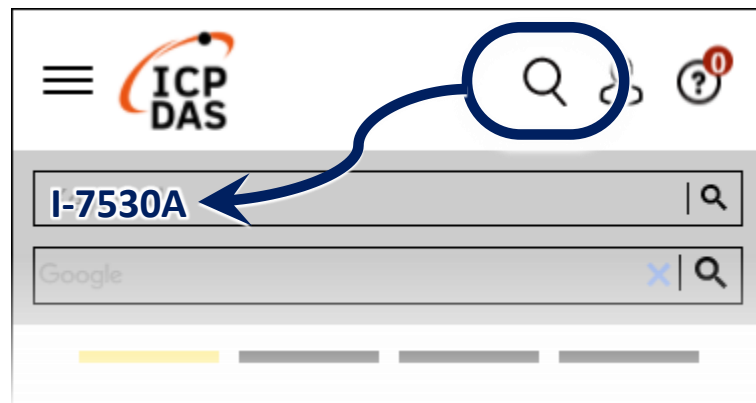
Technical Support

service@icpdas.com

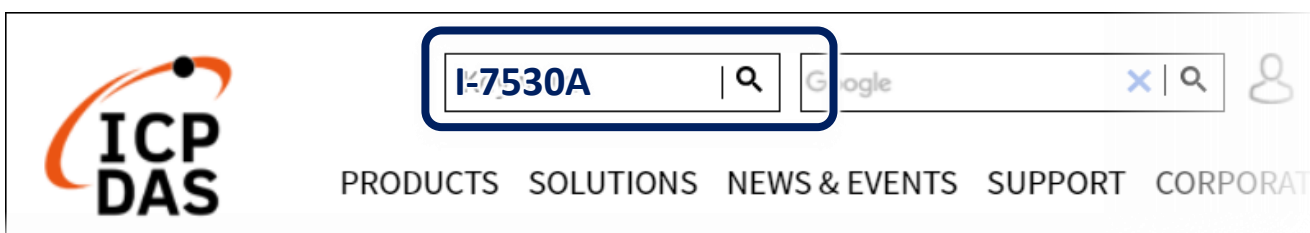
www.icpdas.com

How to search for drivers, manuals and spec information on ICP DAS website.

- For Mobile Web



- For Desktop Web

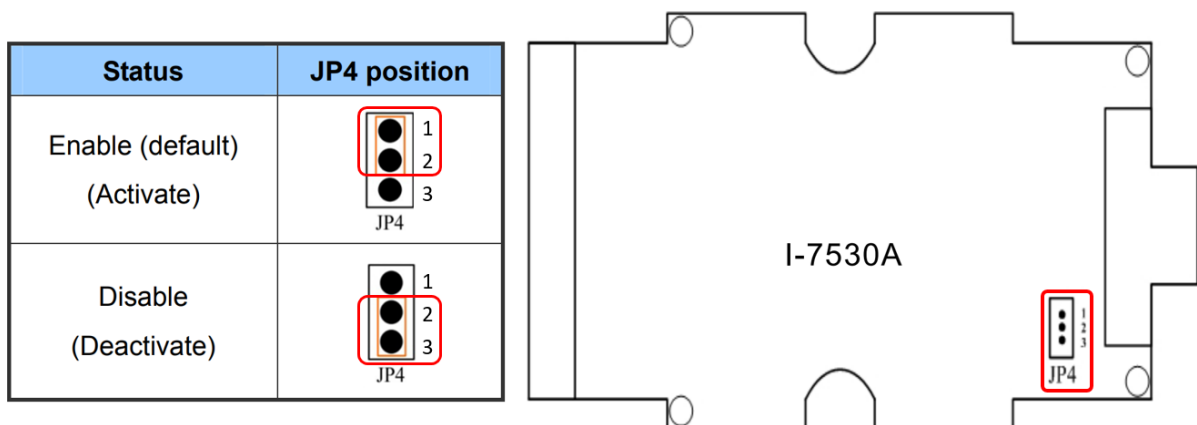


1 Hardware Configuration

1.1 Terminator resistor

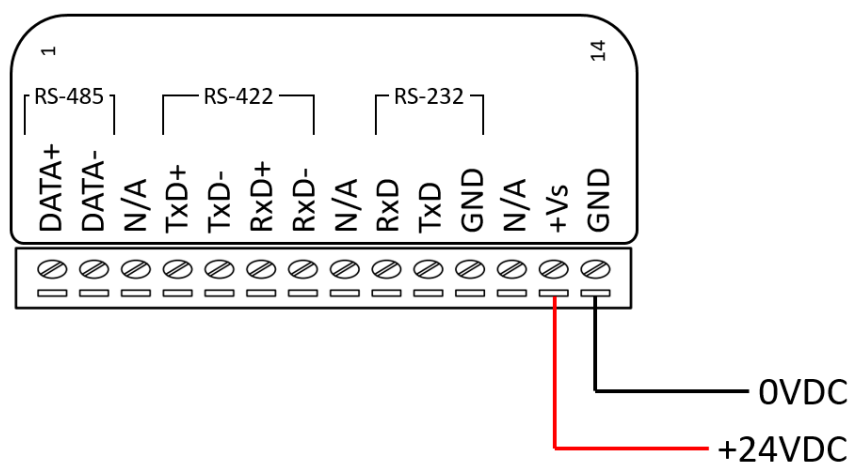
According to the ISO 11898 specifications, the ISO 11898-2 CAN Bus network must be terminated by two terminator resistors (120Ω) for proper operation. If there are not only two terminator resistors or only have one terminator resistor on the CAN bus, the CAN network may be malfunction.

If users would like to enable or disable the terminator resistor inside the I-7530A, it is necessary to open the cover of the I-7530A and use jumper to do that. Here are the descriptions of how to enable or disable the terminator resistor of the I-7530A.



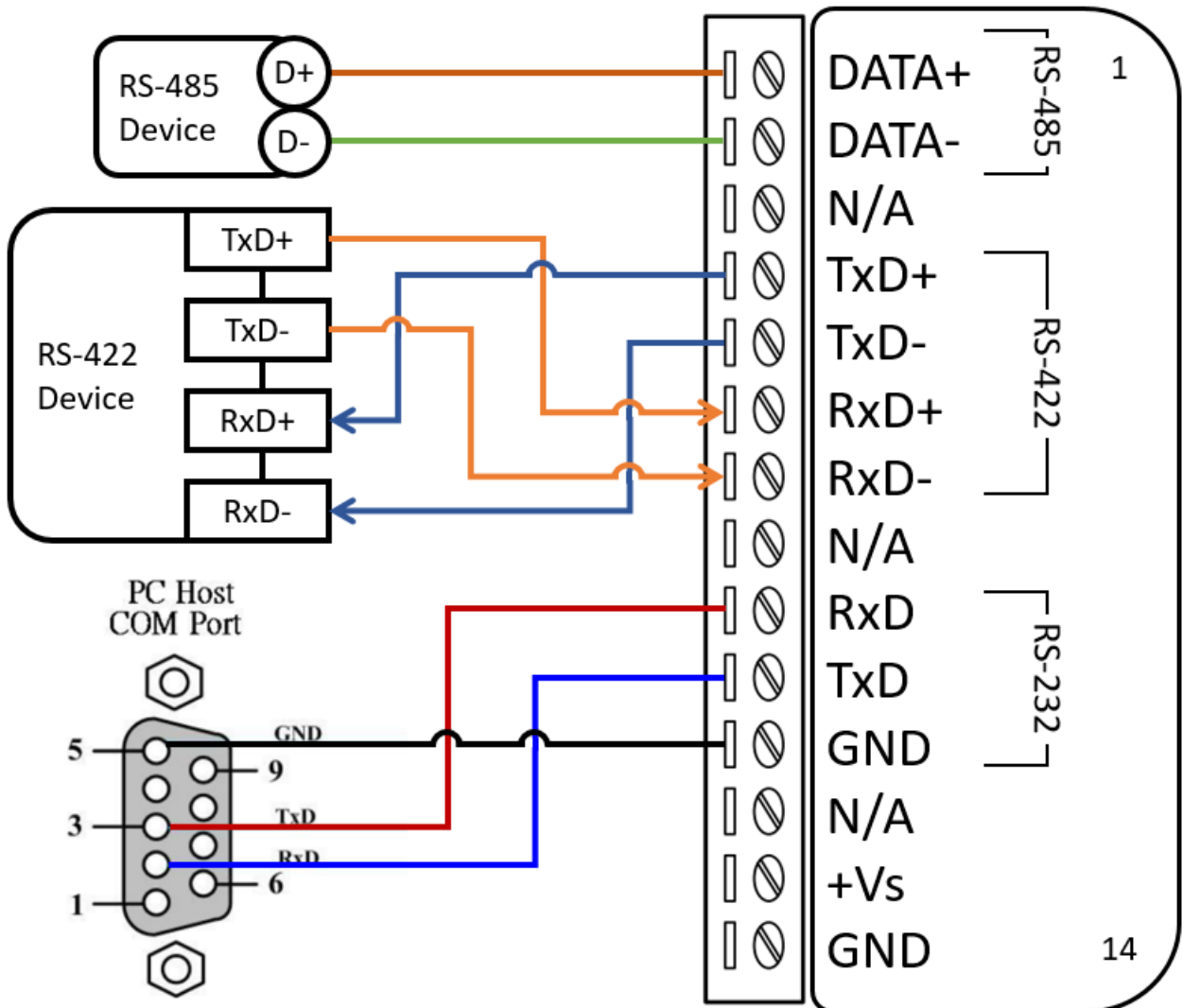
1.2 Power connection

As the following figure, connect the +Vs and GND pins of the I-7530A module to the DC power supply (10 - 30VDC).



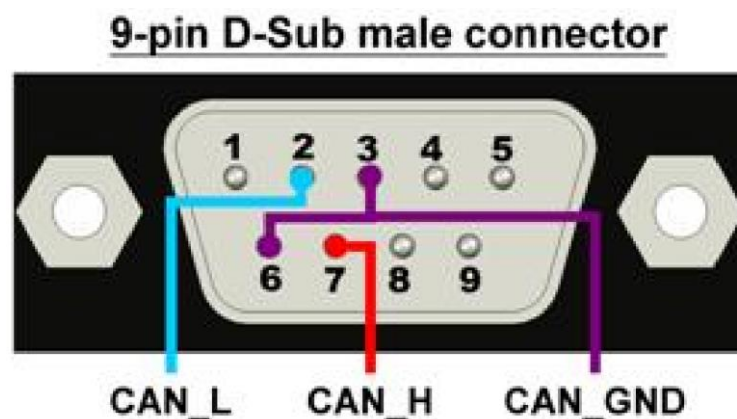
1.3 UART connection

The I-7530A has one UART port with three kinds of interfaces. The following figure is the wire connection of the I-7530A to other UART device.



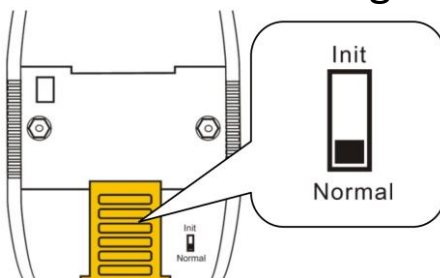
1.4 CAN bus connection

The CAN port of I-7530A uses the D-sub 9 pins male connector. The wire connections are as follows.



2 Set Parameters of I-7530A

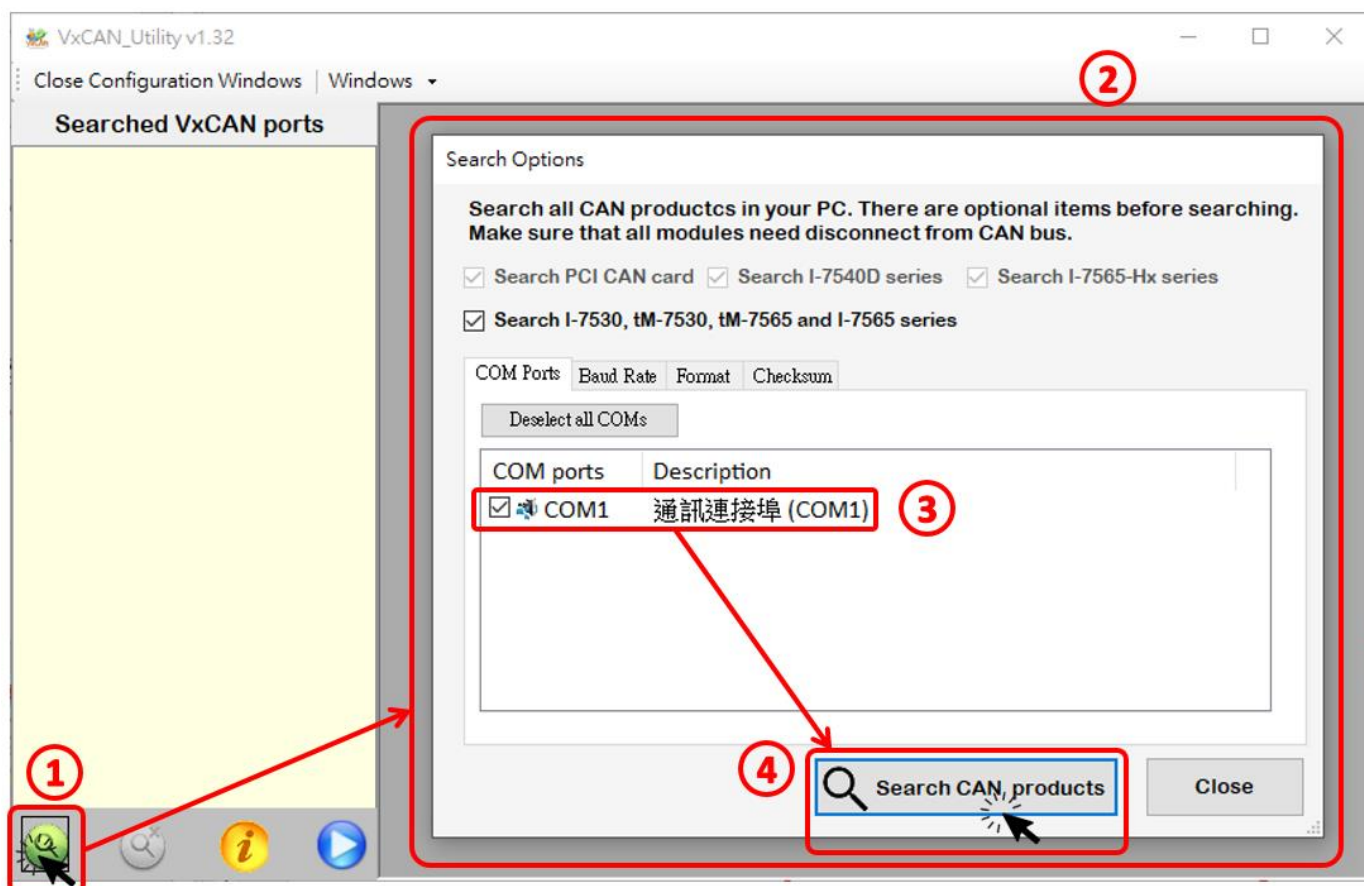
- 2.1 As the following figure, set the Init / Normal switch on the back of the I-7530A to the "Init" position. Then, turn on the power. The ON LED of the I-7530A will be flash once per second. That means that the I-7530A is in the configuration mode.



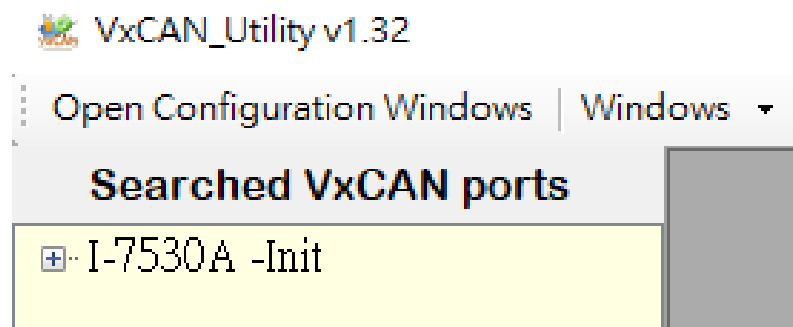
- 2.2 Connect the available COM port of the PC to the I-7530A, and execute the VxCAN Utility. VxCAN Utility can be downloaded from the following link :

https://www.icpdas.com/en/product/guide+Software+Utility_Driver+VxCAN__Utility

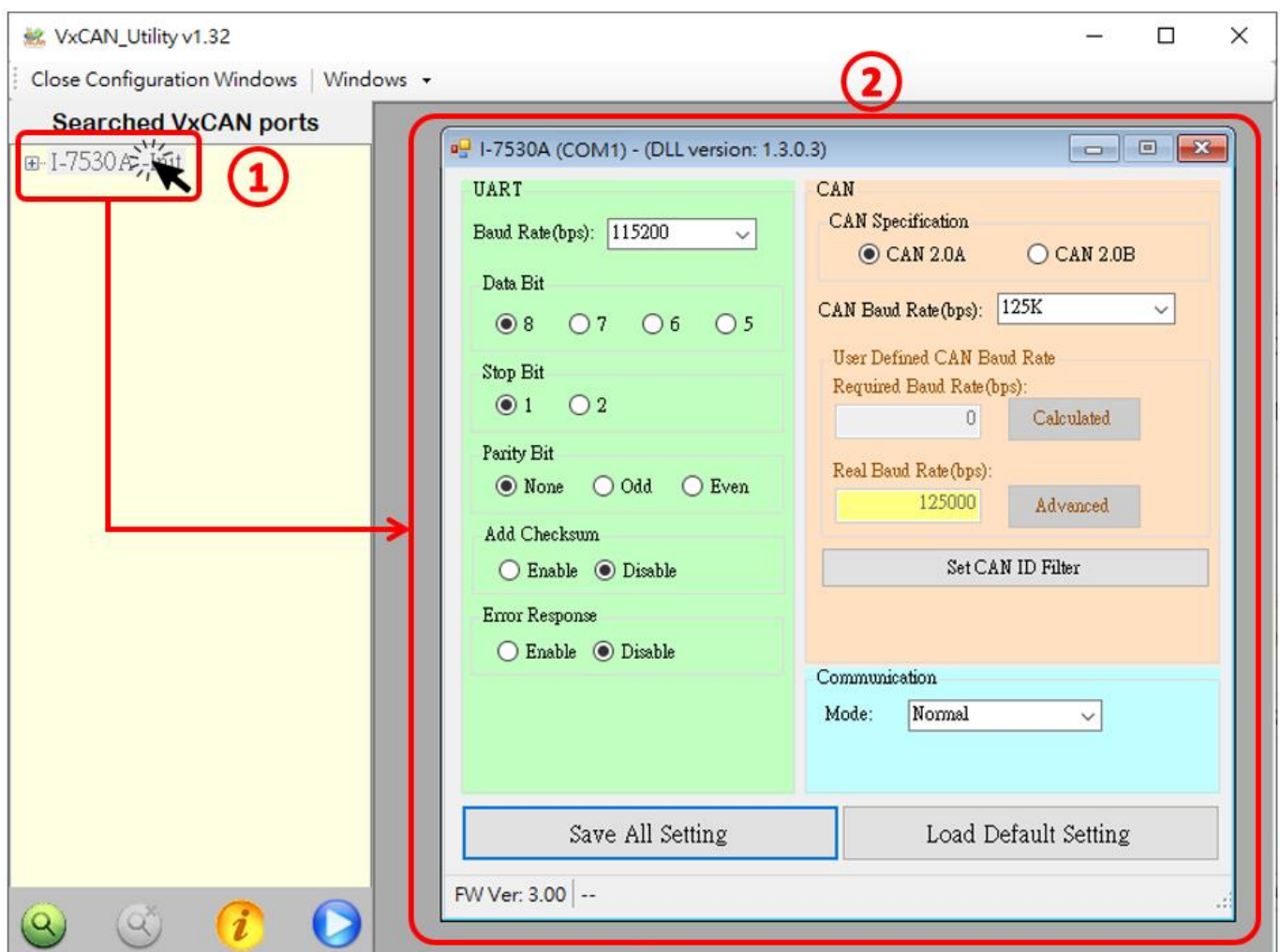
- 2.3 Click the search button and the search window will be popped up. Select the COM Port connected to the I-7530A, then click the "Search CAN Products" button.



2.4 After searching done, the I-7530A will be list in the left window of VxCAN Utility.



2.5 Click the "I-7530A -Init" in the list, the configuration window will be popped up.



The configuration window is divided to three areas with different color. They are UART, CAN, and Communication mode configuration area. Each area can set different parameters of I-7530A.

After finishing the configuration, users can click the button “Save All Setting” to save the configuration in to the I-7530A. If users would like to recover the parameters to the factory default, click “Load Default Setting” button to recover all of the configuration parameters to be default value. Then, users can click the button “Save All Settings” to save the default parameters in to the I-7530A.

The default values of the parameters of the I-7530A are shown below.

UART	
Baud rate	115200 bps
Data Bit	8
Stop Bit	1
Parity	None
Add Checksum	No
Error Response	No

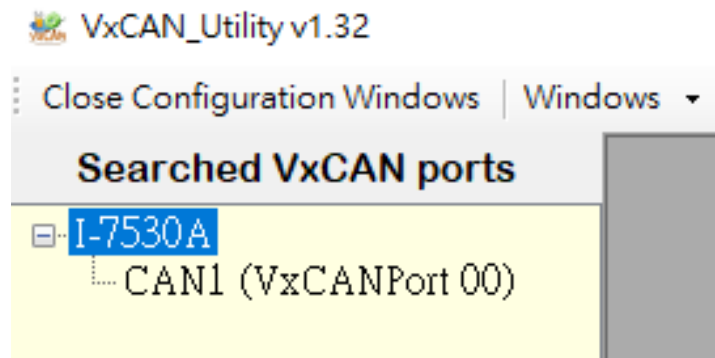
CAN	
CAN Specification	2.0A
CAN Bus Baud rate	125K
CAN ID Filter Acceptance Code	000
CAN ID Filter Acceptance Mask	000

Communication Mode	
Communication Mode	Normal

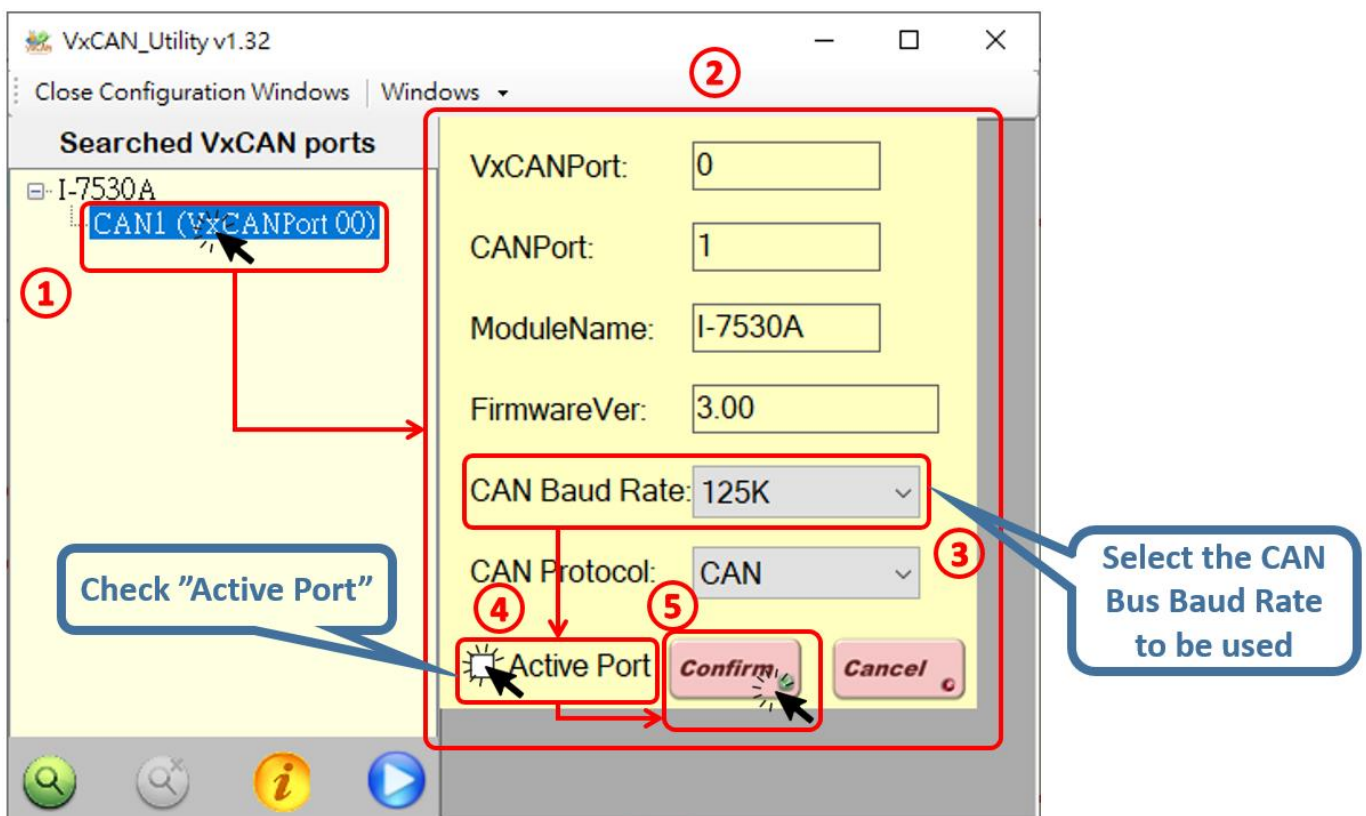
3 I-7530A Communication Test

- 3.1 Please refer to step 2.1, set the Init / Normal switch on the back of the I-7530A to the “Normal” position. Then, turn on the power. The ON LED of the I-7530A will be turned on continuously. That means that the I-7530A is boot and be in the Run mode.

3.2 Please refer to steps 2.2 and 2.3, connect the COM port of PC to the I-7530A, and execute VxCAN Utility to search for the I-7530A module. After searching done, the I-7530A will be list in the left window of VxCAN Utility.

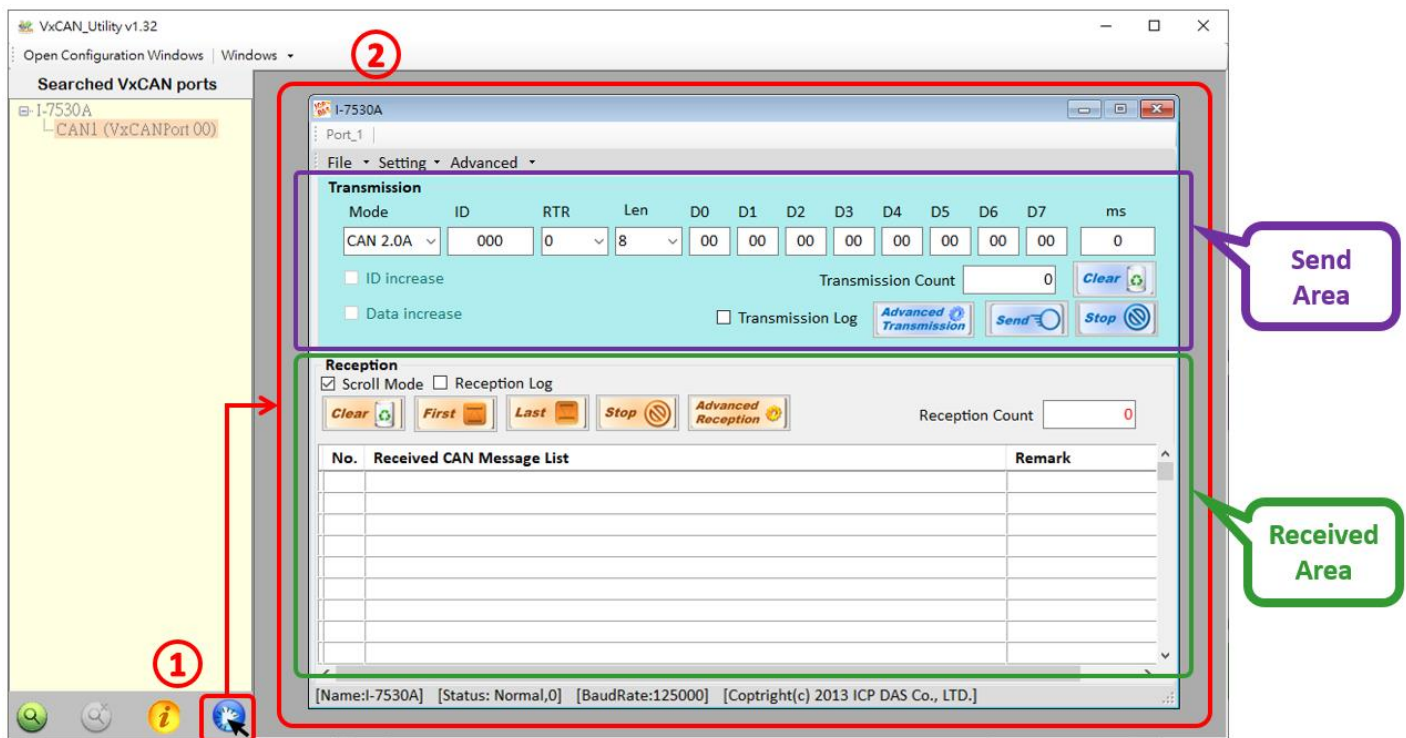



3.3 Click the CAN port of the I-7530A to set the CAN parameters of the I-7530A.



Check the “Active Port” and Click “Confirm” button to enable the CAN port of the I-7530A. The CAN parameters set here will not be stored in to the I-7530A. If users would like to configure the other parameters, please refer to Chapter 2 "Set Parameters of I-7530A", and setting in the configuration mode of I-7530A.

3.4 Click the "Run the CAN Port" button and the operation window will be popped up.



The operation window is divided to two areas. One is for sending CAN messages, and the other is for reception. If users want to send CAN message, fill the data into the corresponding field, and click "Send" button . If the I-7530A gets any CAN messages, they will be shown in received area automatically.

About the details for the VxCAN Utility operation, please refer to the Users' manual of the VxCAN Utility in the following link:
https://www.icpdas.com/web/product/download/software/utility_driver/vxcan/document/manual/VxCAN_Utility_Manual_en.pdf