



(03) 597-3366 / 597-4955

[www.icpdas.com](http://www.icpdas.com)

High Quality Data Acquisition and Embedded Control Products

# *InduSoft FAQ*

Ver 2.0

<b>Q01 : What is InduSoft ?.....</b>	<b>2</b>
<b>Q02 : Does it need any other software when InduSoft project runs in the WinCon? .....</b>	<b>2</b>
<b>Q03 : How much time do users spend to learn InduSoft? .....</b>	<b>2</b>
<b>Q04 : Is InduSoft License upgradeable? .....</b>	<b>2</b>
<b>Q05 : Can Users develop InduSoft project by 4000 InduSoft license (Operator WorkStation) and run it in the W-8x39 with 1500 InduSoft license (CEView Standard)?.....</b>	<b>2</b>
<b>Q06 : What kind of license version in InduSoft? .....</b>	<b>3</b>
<b>Q07 : What is the difference between Development and Runtime version of InduSoft? .....</b>	<b>3</b>
<b>Q08 : Can InduSoft project be developed in CE platform? .....</b>	<b>3</b>
<b>Q09 : Why using InduSoft SCADA software to build your project? .....</b>	<b>3</b>
<b>Q10 : How to recovery the InduSoft License in the WinCon-8000? .....</b>	<b>4</b>
<b>Q11 : How to know what version of InduSoft DCON Driver?.....</b>	<b>4</b>
<b>Q12 : How to transfer *.hst to *.txt? .....</b>	<b>4</b>
<b>Q13 : How to execute InduSoft project when PC boot on? .....</b>	<b>4</b>
<b>Q14 : How to update InduSoft Version on the WinCon? .....</b>	<b>4</b>
<b>Q15 : How to show Full Screen when InduSoft run? .....</b>	<b>4</b>
<b>Q16 : How to share data when using ISaGRAF and InduSoft on the WinCon?.....</b>	<b>5</b>
<b>Q17 : How to supervise the InduSoft project by browser on PDA? .....</b>	<b>5</b>
<b>Q18 : How to know if the devices work well? .....</b>	<b>5</b>
<b>Q19 : How to speed up the DI and AI scan time when using DCON modules?.....</b>	<b>5</b>
<b>Q20 : How to supervise the InduSoft project by browser on other PC? .....</b>	<b>6</b>
<b>Q21 : How to send SMS (Short Message Service) in InduSoft? .....</b>	<b>7</b>
<b>Q22 : Is there any reference book about InduSoft to help users learn it? .....</b>	<b>7</b>
<b>Q23 : Is Camera able to integrate in InduSoft to achieve video control? .....</b>	<b>7</b>
<b>Q24 : How to integrate network camera –IVS-255 in InduSoft?.....</b>	<b>7</b>
<b>Q25 : How to print the InduSoft screen when InduSoft runs on the WinCon?.....</b>	<b>8</b>
<b>Q26 : How to increase the performance to run InduSoft project in WinCon? .....</b>	<b>8</b>
<b>Q27 : How to register Active X object into InduSoft? .....</b>	<b>8</b>
<b>Q28 : On Web Client ends, data on screen is not changed as Server ends? .....</b>	<b>9</b>
<b>Q29 : The curves are not showed on History Trend? .....</b>	<b>10</b>
<b>Q30 : How to print Alarm message once a row when Alarm happened?.....</b>	<b>10</b>
<b>Q31 : How to adjust web page upgrading speed on Web Client ends?.....</b>	<b>10</b>

## **Q01 : What is InduSoft ?**

**A01:** InduSoft is a SCADA (Supervisory Control and Data Acquisition) software developed by InduSoft. It is a powerful collection of automation tools that include all the building blocks needed to develop human machine interfaces (HMIs), supervisory control and data acquisition (SCADA) systems, and embedded instrumentation and control applications.

There are two license version in InduSoft :

**(1).** Enginnering : Used to design HMI screen.

**(2).** Runtime : Used to Run HMI screen.

ICP DAS W-8x39 series controller built in runtime version InduSoft and customer can download InduSoft project developed in the PC to the W-8x39 and run it.

## **Q02 : Does it need any other software when InduSoft project runs in the WinCon?**

**A02:** No, it doesn't. Users just download the InduSoft project to the WinCon and can run it directly.

## **Q03 : How much time do users spend to learn InduSoft?**

**A03:** According to our experience, many users just spend about one or two week to learn InduSoft by themselves and they all can do a good job. If they attend our free charge course for one day, they can quickly understand the functions of InduSoft. So InduSoft is not hard and easy to use to most people. Except free basic course, we also provide professional course to let users be able to learn more functions of InduSoft and learn how to combine ICPDAS DCON I/O modules with InduSoft smoothly.

## **Q04 : Is InduSoft License upgradeable?**

**A04:** Yes, the license can be upgraded either on PC or WinCon. For upgrading process, please refer to the document list below.

## **Q05 : Can Users develop InduSoft project by 4000 InduSoft license (Operator WorkStation) and run it in the W-8x39 with 1500 InduSoft license (CEView Standard)?**

**A05:** Yes, but it depends on the condition. In the W-8x39 with 1500 InduSoft license, the InduSoft project within 1500 tag number can run in it. So users can develop any InduSoft project that contains less tag number than 1500 by 4000 InduSoft license in PC. If the InduSoft project that contains more tag number than 1500 and run in the W-8x39 with 1500 InduSoft license, it will show the time limitation of running with two hours.

## **Q06 : What kind of license version in InduSoft?**

**A06:** There are totally six InduSoft license versions and they include 150 (1 Driver) 、 300 (1 Driver) 、 1500 (3 Drivers) 、 4000 (3 Drivers) 、 64000 (8 Drivers) 、 512000 (Unlimited Drivers) tag number. Users can choose one of them depending on how many tag and driver number you need in your InduSoft project. For Detail information, please refer to the document list below.

## **Q07 : What is the difference between Development and Runtime version of InduSoft?**

**A07:** They all include NT and CE version and they are described as follows :

- (1). **NT Engineer + Runtime** : Develop and Run InduSoft project for NT and CE platform.
- (2). **CE Engineer + Runtime** : Develop and Run InduSoft project for CE platform.
- (3). **NT Runtime** : Only Run InduSoft project for NT platform.
- (4). **CE Runtime** : Only Run InduSoft project for CE platform.

**Note:** When users develop InduSoft project, users can only do that in NT platform (NT/2000/XP) not in Win98 and CE platform.

## **Q08 : Can InduSoft project be developed in CE platform?**

**A08:** No, it can't. InduSoft project can only be developed in NT platform (NT/2000/XP) not for Win98 and CE platform.

## **Q09 : Why using InduSoft SCADA software to build your project?**

**A09:** (1). When users use Indusoft to develop their project, they can finish it easily and quickly without any program capability.

(2). ICP DAS DCON I/O modules Driver has been built in InduSoft. Therefore, users can control I/O modules in InduSoft quickly by setting the driver parameters without any code.

(3). ICPDAS has worked in InduSoft for many years, so when users encounter any problem in InduSoft, we can provide the demo and service adequately. It will let users complete their project quickly and satisfyingly.

(4). In embedded system aspect, ICP DAS has integrated InduSoft to WinCE platform embedded controller- WinCon-8000. Therefore, after users complete their InduSoft project in PC, they can download it to the WinCon-8000 and run it directly. It provides users to develop their embedded SCADA controller quickly.

### **Q10 : How to recovery the InduSoft License in the WinCon-8000?**

**A10:** There might be various reasons resulting in loss of license. For detail recovering process, please refer to the document lists below.

### **Q11 : How to know what version of InduSoft DCON Driver?**

**A11:** Run InduSoft project in PC (with DCON Driver used), and then there will be an I-7000 module icon showed in the system row. Just click this icon and it will appear a window that shows current InduSoft DCON Driver version.

### **Q12 : How to transfer \*.hst to \*.txt?**

**A12:** (1). Open a command prompt window and change the path to "C:\Program Files\Indusoft Web Studio v6.1\Bin".  
(2). Copy InduSoft trend file (like 01050627.hst) to the path "C:\Program Files\Indusoft Web Studio v6.1\Bin".  
(3). Type "**hst2txt 01050627.hst**" in command prompt window and then it will produce 01050627.txt file in the folder.

### **Q13 : How to execute InduSoft project when PC boot on?**

**A13:** Just copy "C:\Program Files\Indusoft Web Studio v6.1\Bin\RunStartUp.exe" to the path C:\Documents and Settings\All Users\Start Menu\Programs\Startup.

### **Q14 : How to update InduSoft Version on the WinCon?**

**A14:** (1). From the path : [http://www.icpdas.com/products/Software/InduSoft/download\\_iws61.htm](http://www.icpdas.com/products/Software/InduSoft/download_iws61.htm) , Download the item : **Runtime InduSoft v6.1 SP3 for W-8x3x / W-8x4x** .  
(2). Decompress the download file and it will produce a folder – InduSoft. Copy it to the path "/CompactFlash/" on the WinCon to replace the original one.

### **Q15 : How to show Full Screen when InduSoft run?**

**A15:** In the accessories of InduSoft screen editor, change the Size values of Width and Height the same with your windows resolution.

## Q16 : How to share data when using ISaGRAF and InduSoft on the WinCon?

**A16:** Download from [http://www.icpdas.com/products/Software/InduSoft/download\\_document.htm](http://www.icpdas.com/products/Software/InduSoft/download_document.htm) , and choose this item : [Indusoft communicate with ISaGRAF on WinCon](#).

## Q17 : How to supervise the InduSoft project by browser on PDA?

**A17:** (1). Users should have three files - [REGSVRCE.EXE](#) 、 [IndHTTP.dll](#) 、 [ISSymbolCE.ocx](#) that are related to the CPU Type of PDA.

(2). Copy these file to the PDA and execute "[REGSVRCE.EXE](#)". Then input the name : [ISSymbolCE.ocx](#) to register ISSymbolCE.ocx to the PDA.

(3). Open browser and input the InduSoft web page path. Then users can see the InduSoft screen in the browser.

For detail information, please refer to the document below.

[http://www.icpdas.com/products/Software/InduSoft/download\\_document.htm](http://www.icpdas.com/products/Software/InduSoft/download_document.htm)

## Q18 : How to know if the devices work well?

**A18:** Using "[Tag->quality](#)" method to achieve the function. For example : Add a new tag – AI and connect it to the device via InduSoft driver form. Using "AI->quality" method, it will return a value and you can know if the devices work well by it. If the return value is **192**, it means the communication is ok. If the return value is **0**, it means the communication is not ok.

## Q19 : How to speed up the DI and AI scan time when using DCON modules?

**A19:** For example :

When using 7041 DI module in InduSoft, users just need to fill the first field of address in DCON Driver Form and other address fields are all blank. Then the continuous channel value will be acquired to the corresponding tag. Like below figure showed, the DI[0] to DI[3] tags will receive the data value from channel 0 to channel 3 of 7041.

Description:  
7041 Digital Input ☐ Increase priority

Read Trigger:  Enable Read when Idle:  1 Read Completed:  Read Status:

Write Trigger:  Enable Write on Tag Change:  Write Completed:  Write Status:

Station:  Header:  DI ☐ Min:  Max:

	Tag Name	Address
1	DI[0]	01:7041:0
2	DI[1]	
3	DI[2]	
4	DI[3]	

When using AI modules, the settings are all the same. Like below figure showed, the AI[0] to AI[3] tags will receive the data value from channel 0 to channel 3 of 8017.

Description:  
8017 Analog Input ☐ Increase priority

Read Trigger:  Enable Read when Idle:  1 Read Completed:  Read Status:

Write Trigger:  Enable Write on Tag Change:  Write Completed:  Write Status:

Station:  Header:  AI ☐ Min:  Max:

	Tag Name	Address
1	AI[0]	04:8017:1:0
2	AI[1]	
3	AI[2]	
4	AI[3]	

## Q20 : How to supervise the InduSoft project by browser on other PC?

- A20:** (1). When users want to supervise the InduSoft project from other PC, users need to install ISSymbol element in that PC first. Users can download ISSymbol element from [http://www.icpdas.com/products/Software/InduSoft/download\\_iws61.htm](http://www.icpdas.com/products/Software/InduSoft/download_iws61.htm) , and choose the item : [ISSymbol v6.1 SP1](#).
- (2). Decompress it and execute **ISSymbolReg.exe**. It will install the necessary files in users' PC automatically.
- (3). Open the browser and type the InduSoft web page path and it will show the InduSoft screen in the browser.

## Q21 : How to send SMS (Short Message Service) in InduSoft?

**A21:** Please refer to the SMS Demo. Download it from [http://www.icpdas.com/products/Software/InduSoft/download\\_DP.htm](http://www.icpdas.com/products/Software/InduSoft/download_DP.htm) and choose the item : [WinCon → WinCon SMS Active X](#).

## Q22 : Is there any reference book about InduSoft to help users learn it?

**A22:** Yes, there is. ICPDAS publishes a reference book to help users able to learn InduSoft quicker and apply it in users' control projects. It is written in Chinese and its name is 『圖形監控系統設計實務』. In the first half of this book, it explains how to use the functions provided by InduSoft SCADA software by using demos. In the later half, it provides many real demos that detail how to communicate with ICPDAS I/O modules and how to combine with ICPDAS embedded controller – WinCon8000 by using InduSoft. I believe that after users study it, they can build their embedded control project quickly and conveniently. Now many companies have adopted InduSoft to develop their embedded system controller with WinCon-8000 and these applications include factory automation, temperature or water level measure and motor rotating speed control etc.

## Q23 : Is Camera able to integrate in InduSoft to achieve video control?

**A23:** It is positive. Now ICPDAS has released a video server – IVS-255. By using IVS-255, users may integrate video images and voices in InduSoft through Ethernet. IVS-255 makes InduSoft SCADA more powerful to achieve video control. The functions list below is provided by IVS-255 and InduSoft.

- (1). 16 monitored sites are showed at the same time on a screen (Every IVS-255 is capable with **4 cameras** and the connection application “[IVSLinkMaster.exe](#)” allows **4 video servers** connected at the same time).
- (2). Convert and save video images and sound to .AVI files.
- (3). Broadcast sound to the monitor site.

## Q24 : How to integrate network camera –IVS-255 in InduSoft?

**A24:** Please refer the demo project and document.  
[http://www.icpdas.com/products/Software/InduSoft/download\\_DP.htm](http://www.icpdas.com/products/Software/InduSoft/download_DP.htm) → ICP DAS → [IVS-255 & RS-405](#).

## Q25 : How to print the InduSoft screen when InduSoft runs on the WinCon?

- A25:** (1). Users need to set the print function ok on the WinCon first. The manual download path is : [http://www.icpdas.com/oldweb/products/wincon/wincon\\_index.htm](http://www.icpdas.com/oldweb/products/wincon/wincon_index.htm) and click “how to use” folder. Then download [howtouse\\_printer\\_en.zip](#) document.
- (2). Execute /CompactFlash/Indusoft/CEServer.exe to run InduSoft project and then click File/Print item and it will print the current InduSoft screen.

## Q26 : How to increase the performance to run InduSoft project in WinCon?

**A26:** The lists below will affect the WinCon’s performance.

- (1). **Mathematical Calculations:** MATH, Script, Schedule folder, and On While function on screen Attribute.
- (2). **Hardware Communications:** Driver, OPC, DDE, and TCP/IP folder.
- (3). **Data Saved in CF card:** Recipe, Report, Trend, and Alarm data.

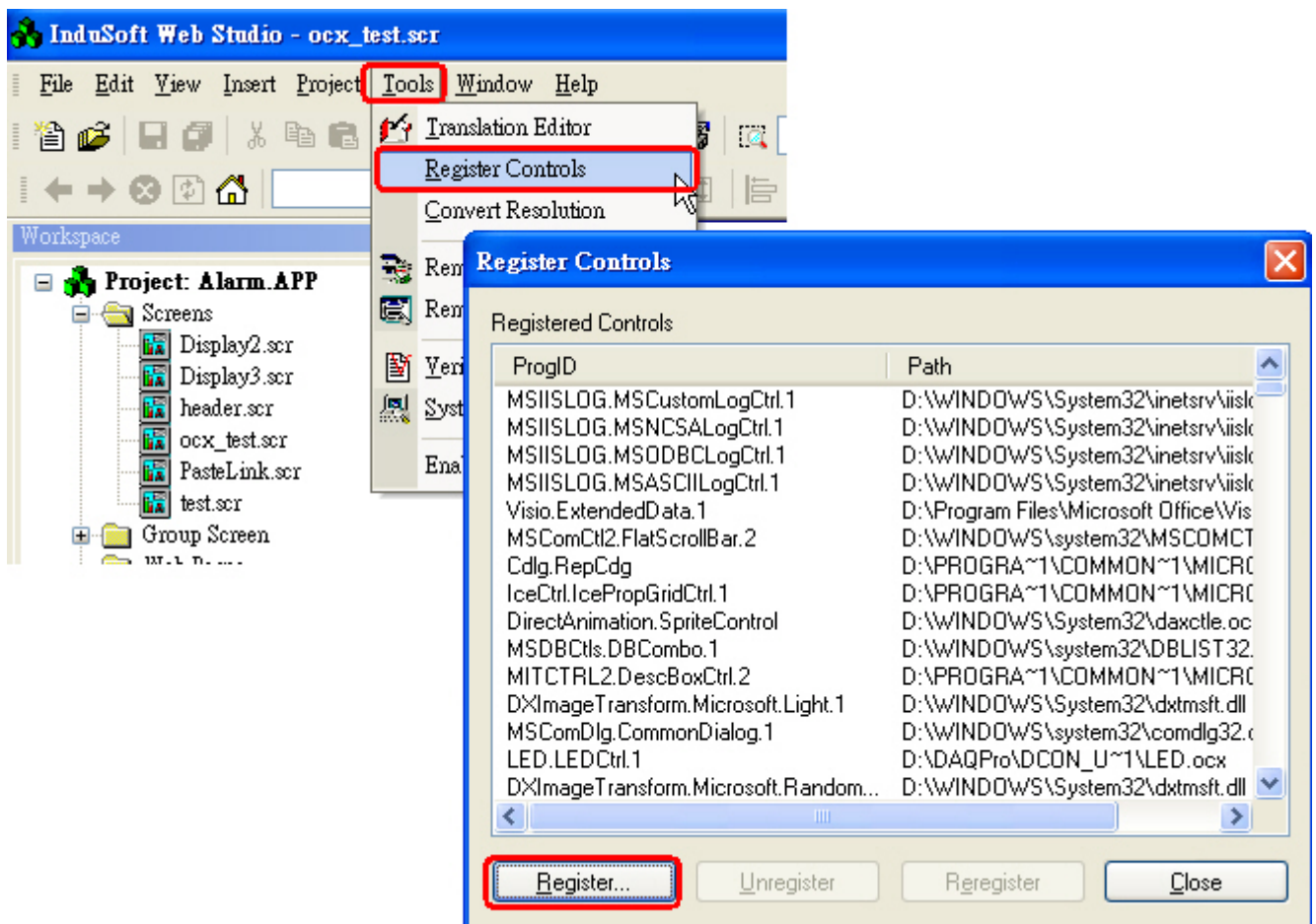
The frequency of using functions lists above is the slower the better. For example: In Math sheet, users may change execution column to second to execute sheet every second. For some less importance math sheet, lower its frequency to improve WinCon’s performance is highly recommended.

- (4). Increase Memory when running WinCon.

## Q27 : How to register Active X object into InduSoft?

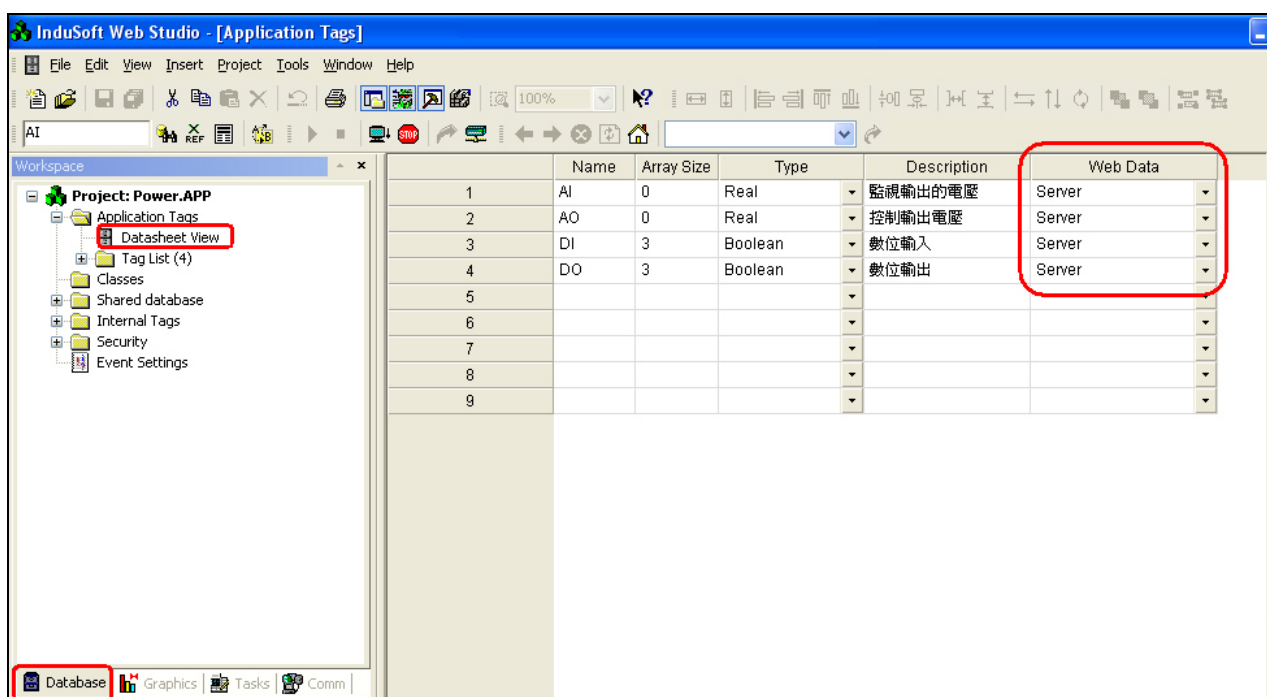
- A27:** (1). Click **Tools** → **Register Controls**
- (2). When Windows open, choose Active X object (\*.ocx), and click **Register...** to register Active X.





**Q28 : On Web Client ends, data on screen is not changed as Server ends?**

**A28:** On Datasheet view folder, make sure the tag properties of web data is set to “**Server**” not “**Local**”. When it set to Server, data will be upgraded at the same time on both Server and Client ends. After tags modification, click **Tools** → **Verify**, and then save HTML files again.



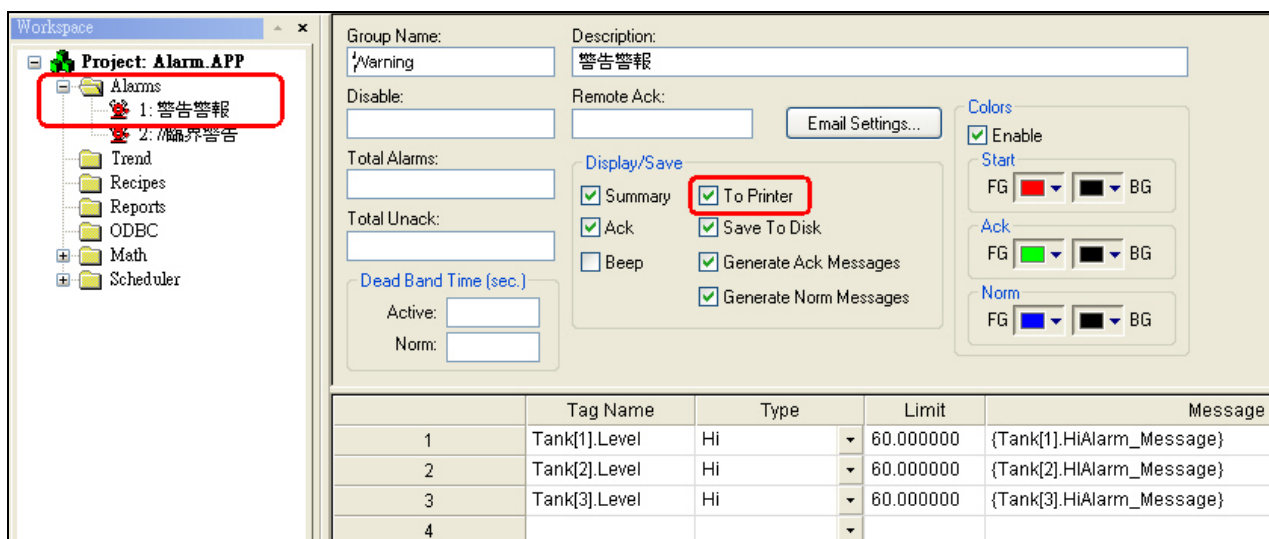
## Q29 : The curves are not showed on History Trend?

**A29:** After Trend sheet (add or delete points) modified, the history files' (\*.hst) format are changed as well, so that the curves on Trend will not showed correctly. Please delete .hst files from **Project Folder/Hst**, and run the application again.

## Q30 : How to print Alarm message once a row when Alarm happened?

**A30:** There are two ways to achieve the goal.

(1). Use **dot matrix printer**, and check **"To Printer"** option in Alarm folder. **This solution is not working on WinCon.**



(2). Dot matrix printers with serial com port and communicate via TxRx Driver. It works on both PC and WinCon.

## Q31 : How to adjust web page upgrading speed on Web Client ends?

**A31:** After saved as .html files, edit files from notepad. Changed **ISSymbol1.ConnectRetryTimeout = 30 (second)** to the upgrading time user wants to change.

```
function DoIt ()
{
ISSymbol1.HTMLVersion = 2
ISSymbol1.ProductName = "InduSoft Web Studio"
ISSymbol1.ProductVersion = "6.0"
ISSymbol1.HostIPAddress = "192.168.0.202"
ISSymbol1.HostPort = 1234
ISSymbol1.SendPeriod = 1000
ISSymbol1.ConnectRetryTimeout = 30
ISSymbol1.SymbolPath = "display2.scc"
}
```