

Table Of CONTENTS

Industrial Communication Boards

PCI Communication Boards

| | |
|---------------------------|-----|
| Overview & Features | 1-1 |
| Selection Guide | 1-2 |
| VXC-112 / VXC-112A | 1-3 |
| VXC-114H | 1-4 |
| VXC-142 / VXC-142i | 1-5 |
| VXC-144 | 1-6 |
| VXC-182i | 1-7 |

CAN Communication Boards

| | |
|-------------------------------------|------|
| PISO-CAN200-D / PISO-CAN200-T | 1-8 |
| PISO-CAN400-D / PISO-CAN400-T | 1-9 |
| PISO-CM100 | 1-10 |
| PISO-CPM100 | 1-11 |
| PISO-DNM100 | 1-12 |

PCI / ISA Communication Boards

| | |
|------------------------|------|
| PCI-488 / PC-488 | 1-13 |
|------------------------|------|

Communication Interface

| | |
|---------------|------|
| USB-488 | 1-14 |
|---------------|------|

PCI Bus Memory Boards

| | |
|--------------------------|-----|
| PCI-M512 / PCI-M4M | 2-1 |
|--------------------------|-----|

PCI Bus Data Acquisition Boards

| | |
|-----------------------|-----|
| Selection Guide | 2-2 |
|-----------------------|-----|

Multifunction Boards

| | |
|--------------------------------------|-----|
| PCI-180X / PCI-1602 / PCI-1202 | 2-3 |
| PCI-1002 | 2-7 |
| PIO-821 | 2-9 |

A/D, D/A Boards

| | |
|------------------------------------|------|
| PISO-813 | 2-10 |
| Selection Guide | 2-11 |
| PISO-DA2 | 2-12 |
| PIO-DA16 / PIO-DA8 / PIO-DA4 | 2-13 |

Digital I/O Boards

| | |
|---|------|
| Selection Guide | 2-15 |
| PIO-D168 / PIO-D144 / PIO-D96 / PIO-D48 | 2-16 |
| PIO-D64 | 2-19 |
| PIO-D56 / PIO-D24 | 2-20 |
| PCI-TMC12A | 2-21 |
| Selection Guide | 2-22 |
| PCI-P8R8 / PCI-P16R16 / PISO-P16R16U | 2-23 |
| PCI-P16C16 | 2-24 |
| PCI-P16POR16 | 2-25 |
| PISO-P8R8 / PISO-P8SSR8AC / PISO-P8SSR8DC | 2-26 |
| PISO-P32A32 / PISO-P32C32 / PISO-P64 / | |
| PISO-A64 / PISO-C64 | 2-28 |
| PISO-725 | 2-30 |
| PISO-730 / PISO-730A | 2-31 |

ISA Bus Data Acquisition Boards

Isolated Data Acquisition Boards

| | |
|--------------------------------------|------|
| Selection Guide | 3-1 |
| ISO-AD32H / ISO-AD32L | 3-2 |
| ISO-LDH / ISO-LDL | 3-4 |
| ISO-813 | 3-6 |
| ISO-DA8 / ISO-DA16 | 3-7 |
| ISO-P32C32 / ISO-P64 / ISO-C64 | 3-9 |
| ISO-730 | 3-11 |
| ISO-P8R8DIO / ISO-P16R16DIO | 3-12 |

Multi-Function Boards

| | |
|-------------------------|------|
| Selection Guide | 3-13 |
| A-826PG | 3-14 |
| A-823PG / A-822PG | 3-16 |
| A-821PG | 3-18 |
| A-812PG | 3-20 |
| A-8111 | 3-21 |

ISA-Bus Data Acquisition Boards

| | |
|---|------|
| A-626 / A-628 | 3-22 |
| A-812PG / A-8111 / A-626 / A-628 Pin Assignment | 3-23 |
| DIO-144 / DIO-96 / DIO-48 / DIO-24 | 3-24 |
| DIO-64 | 3-26 |
| TMC-10 | 3-27 |

Daughter Boards & Accessories

Daughter Boards

| | |
|---|------|
| Selection Guide | 4-1 |
| DB-32R / DB-16P16R | 4-5 |
| DB-16P / DB-24P / DB-24PD | 4-6 |
| DB-16R / DB-24R / DB-24RD | 4-7 |
| DB-24PR / DB-24PRD | 4-8 |
| DB-24C / DB-24OD | 4-9 |
| DB-24POR / DB-16P8R | 4-10 |
| DB-24SSR | 4-11 |
| DB-889D | 4-12 |
| DN-09-2 / DN-20 / DN-20-381 / DN-25 / DN-37 / DN-37-381 | 4-13 |
| DN-50 / DN-50-381 / DN-68 | 4-13 |
| DB-1825 / DB-8025 / DB-8125 / DB-8225 / DB-8325 / | 4-14 |
| DB-8425 / DB-3R / DB-8R / DB-37 / DB-200 | 4-14 |

Relay Module

| | |
|--|------|
| DN-PR4 / DN-SSR4 / RM-10X / RM-20X / I-950-ENC | 4-16 |
|--|------|

Accessories & Cable

| | |
|-------|------|
| | 4-18 |
|-------|------|

Motion Control & Watchdog Boards

Motion Control Boards

| | |
|--|-----|
| PISO-PS300 | 5-1 |
| PISO-ENCODER300 / PISO-ENCODER600..... | 5-3 |
| SERVO-300 | 5-4 |
| STEP-200 | 5-6 |
| ENCODER-300 | 5-7 |

Watchdog Boards

| | |
|-----------------------|-----|
| WDT-01 / WDT-02 | 5-8 |
| WDT-03 | 5-9 |

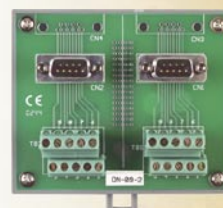
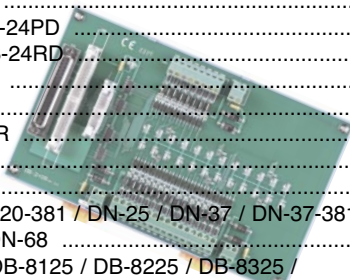
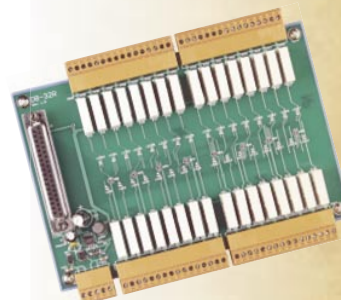
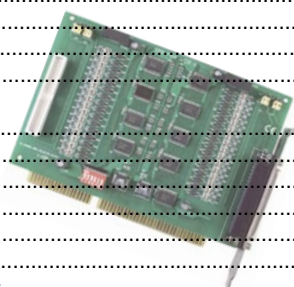
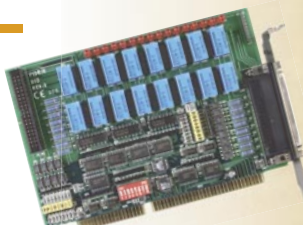
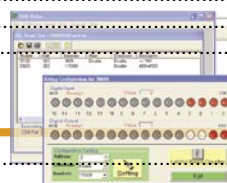


Table Of CONTENTS



Signal Conditioning & Power Modules

| | |
|-----------------------|-----|
| Selection Guide | 6-1 |
| SG-3011 | 6-2 |
| SG-3016 | 6-3 |
| SG-3013 | 6-4 |
| SG-3071 | 6-5 |
| SG-3081 | 6-6 |
| PW-3090 | 6-7 |



Software Solution

| | |
|--------------------------|------|
| Utility & Software | 7-1 |
| Software Support | 7-11 |

FRnet & FRnet Products



| | |
|---------------------------------------|-----|
| FRnet & FRnet Products Overview | 8-1 |
|---------------------------------------|-----|

FRnet Communication Boards

| | |
|-------------------------|-----|
| FRB-200 / FRB-100 | 8-3 |
|-------------------------|-----|

FRnet Embedded Controller

| | |
|------------------------------------|-----|
| I-7188EF-016 / I-7188EFD-016 | 8-4 |
|------------------------------------|-----|

FRnet MagicWire

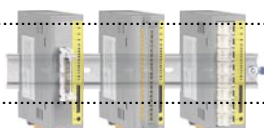
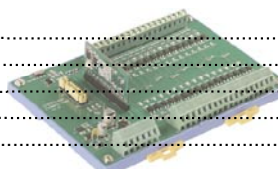
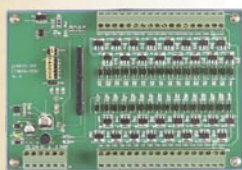
| | |
|-----------------------|------|
| Selection Guide | 8-5 |
| Introduction | 8-6 |
| MD-11 / MD-12 | 8-9 |
| MA-11 / MA-12 | 8-11 |

FR I/O Modules

| | |
|---|------|
| Selection Guide | 8-14 |
| Common Features | 8-16 |
| Jumper Setting | 8-17 |
| Interface Circuits | 8-18 |
| FR-8P / FR-16P / FR-32P | 8-19 |
| FR-8C / FR-16C / FR-32C | 8-20 |
| FR-8A / FR-16A / FR-32A | 8-21 |
| FR-8R / FR-16R / FR-32R | 8-22 |
| FR-4P4A / FR-16P16A | 8-23 |
| FR-4P4POR / FR-4P4SSRA / FR-4P4SSRD | 8-24 |
| FR-8POR / FR-16POR / FR-8SSRA / FR-16SSRA / FR-8SSRD / FR-16SSRD | 8-25 |
| FR-4P4R / FR-16P16R | 8-26 |
| FR-4P4C / FR-16P16C | 8-27 |

FRnet Distributed I/O Modules

| | |
|--|------|
| FR-2053 / FR-2053T / FR-2053S / FR-2057 / FR-2057T / FR-2057S | 8-28 |
|--|------|



LED Display

| | |
|-------------------|-----|
| EKAN Series | 9-1 |
|-------------------|-----|

