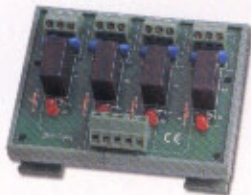


## Daughter Boards



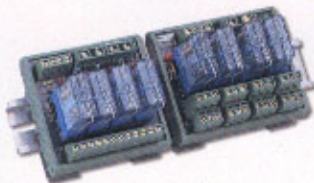
### DN-SSR4

- 4 channel DIN-Rail mounting solid state relay module



### DN-PR4

- 4-channel DIN-Rail mounting power relay module



### RM-10X/RM-20X

- 4, 8, 16-channel DIN-Rail mounting power relay modules

## Cable & Accessories



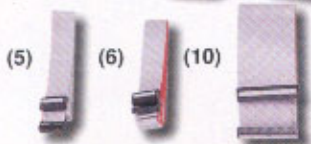
(7)

(3)



(8)

(9)



(5)

(6)

(10)



(13)

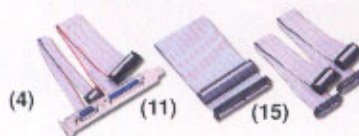
(12)



(14)

(2)

(1)



(4)

(11)

(15)

### (1) CA-0910

- Cable for I-7188 and SST-900

### (2) CA-0915

- 9-pin Male-Female D-Sub Cable, 1.5m

### (3) CA-0920

- 9-pin Male-Male D-Sub Cable, 2m

### (4) CA-9-2502

- 9-pin Male & 25-pin Female D-Sub Cable, 20cm

### (5) CA-2010

- 20-pin flat cable, 1m

### (6) CA-2020

- 20-pin flat cable, 2m

### (7) CA-2520

- 25-pin Male-Male D-Sub flat Cable, 2m

### (8) CA-3710

- DB-37 Male-Male D-Sub Cable 1m

### (9) CA-3720

- DB-37 Male-Male D-Sub Cable 2m

### (10) CA-5015

- 50-pin flat cable 1.5m

### (11) CA-5002

- 50-pin flat cable 20cm

### (12) CA-4002

- 37-pin Male D-Sub connector with plastic cover

### (13) CA-40-37

- 40-pin flat & D-Sub 37-pin Female Cable 20cm

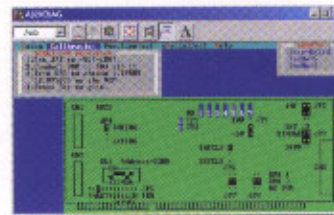
### (14) CA-GPIB10, 20, 40

- GPIB cable 1, 2, 4 meter long

### (15) CA-2002

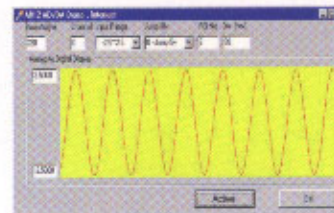
- 20-pin flat cable 20cm x 2

## Software



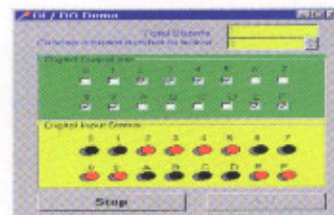
### NAPDOS

- Software Toolkit for DOS



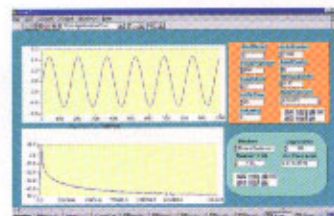
### NAPWIN

- Software Toolkit for Windows 95/98



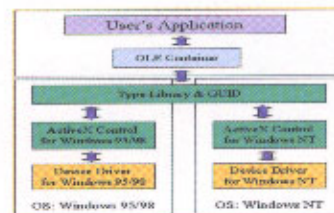
### NAPWNT

- Software Toolkit for Windows NT



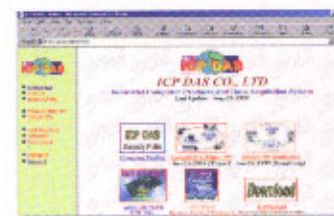
### NAPVIEW

- Software Toolkit for LabVIEW



### NAPX

- ActiveX Control (OCX) for Windows 95/98/NT



### Web-Site

- All of the Software Toolkits can be download from <http://www.icpdas.com> for evaluation purpose only